



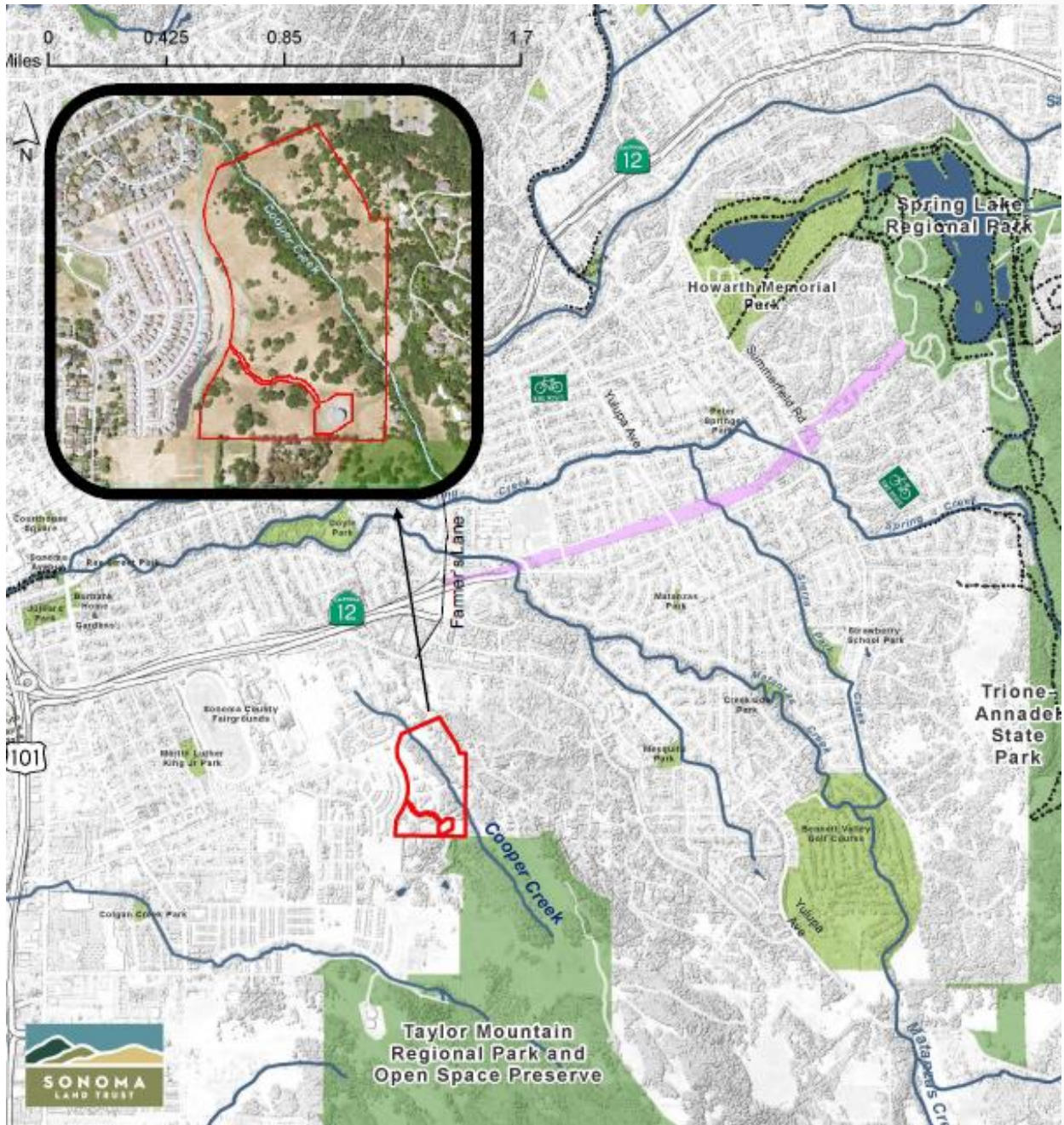
THOMAS FLORIAN FRAZIER PROPERTY ACQUISITION

City Council
February 25, 2020

Jason Nutt, Assistant City Manager

BACKGROUND

- Sonoma County Regional Parks and Sonoma Land Trust collaborating to purchase Frazier property to:
 - Expand Taylor Mountain Regional Park
 - Connect Tylor Mountain Regional Park to communities
 - Protect and restore riparian habitat around Cooper Creek
 - Create a connection to future Southeast Greenway
- 54 acres property
- Anticipated sale price = \$1,350,000



BACKGROUND (cont.)

- Sonoma County Parkland Acquisition Trust Fund
 - Established in 1970 following sale of the old courthouse site to the City of Santa Rosa
 - Funded with \$50,000 from sale
 - \$60,000 added to the Fund in 1974
 - Fund purpose – Offer matching funds to the eight cities or other local entities who want to establish park facilities to serve their residents.
 - Example projects include:
 - Deport Park – Sonoma (1974)
 - Crane Creek Regional Park – Rohnert Park (1976)
 - Joe Rodota Trail – Sebastopol (1980)
 - Southwest Community Park – Santa Rosa (1980)
 - Tolay Lake Regional Park – Petaluma (2005)

ANALYSIS

- Purchase of property for park expansion, conservation and connectivity are consistent with the City's General Plan
 - 1993 Southeast Area Plan
 - 21 estate homes
 - Current appraisal
 - 1-2 estate homes due to earthquake fault setbacks
- Request: \$75,000 to match SCAPOSD grant
- Mayor Coursey issued a letter of support on behalf of the Council for the acquisition in August 2018

RECOMMENDATION

It is recommended by the Transportation and Public Works Department that the Council, by resolution, support the County of Sonoma's appropriation of \$75,000 from the Sonoma County Park Land Acquisition Fund for the acquisition of the Thomas Florian Frazier property (APN: 038-261-010) by Sonoma County and the Sonoma Land Trust, which would expand Sonoma County's Taylor Mountain Regional Park within City limits.

QUESTIONS?