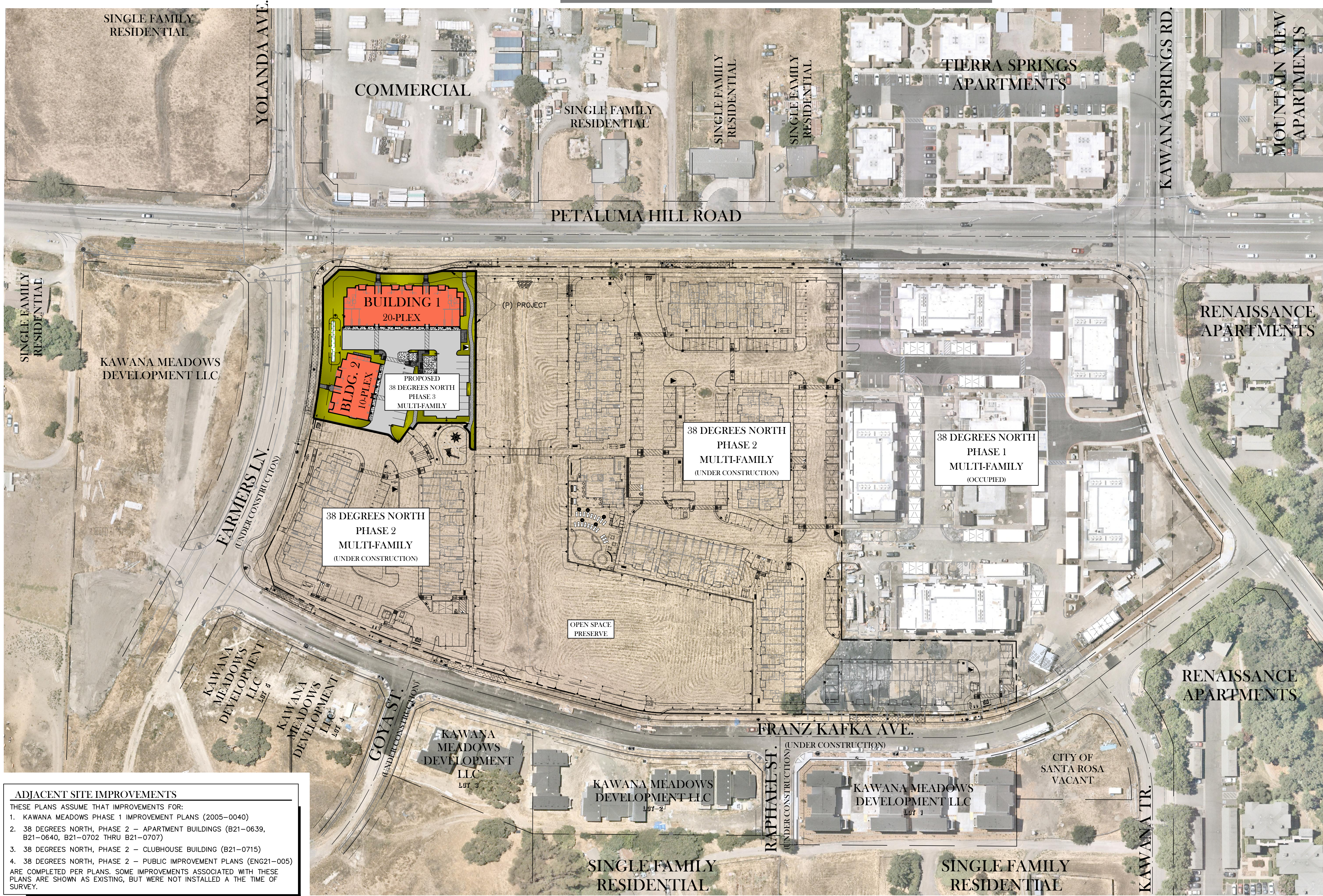


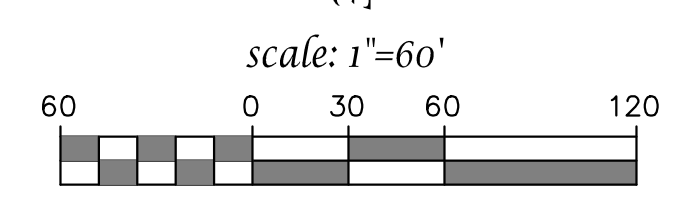
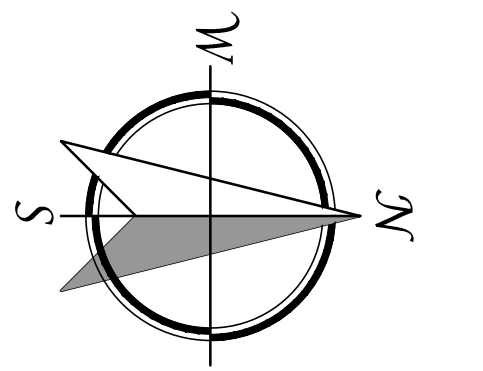
NEIGHBORHOOD CONTEXT MAP
38 DEGREES NORTH - PHASE 3
 CONCEPTUAL DESIGN REVIEW
 CITY OF SANTA ROSA, CA

RECEIVED
 By E07081 at 11:47 am, May 13, 2021



LEGEND

| | |
|--|-------------------|
| | AC PAVEMENT |
| | CONCRETE PAVEMENT |
| | CONCRETE SIDEWALK |
| | SITE LANDSCAPING |



NEIGHBORHOOD CONTEXT MAP
 MAY 12, 2021

TSD ENGINEERING, INC.
 expect more.
 31 Natoma Street, Suite #160
 Folsom, CA 95630
 Phone: (916) 608-0707
 Fax: (916) 608-0701

- ADJACENT SITE IMPROVEMENTS**
 THESE PLANS ASSUME THAT IMPROVEMENTS FOR:
1. KAWANA MEADOWS PHASE 1 IMPROVEMENT PLANS (2005-0040)
 2. 38 DEGREES NORTH, PHASE 2 - APARTMENT BUILDINGS (B21-0639, B21-0640, B21-0702 THRU B21-0707)
 3. 38 DEGREES NORTH, PHASE 2 - CLUBHOUSE BUILDING (B21-0715)
 4. 38 DEGREES NORTH, PHASE 2 - PUBLIC IMPROVEMENT PLANS (ENG21-005)
- ARE COMPLETED PER PLANS. SOME IMPROVEMENTS ASSOCIATED WITH THESE PLANS ARE SHOWN AS EXISTING, BUT WERE NOT INSTALLED AT THE TIME OF SURVEY.

C3

P:\Projects\430-004\02_DWG\B- Planning\FIG\38N_PHS-CONTEXT.dwg, Kerry, 08/19/24, 05-12-21