

Attachment 3B

901 SQ FT 1-BEDRM, 1-BATH ADA FLAT

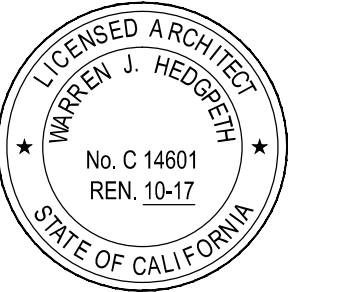
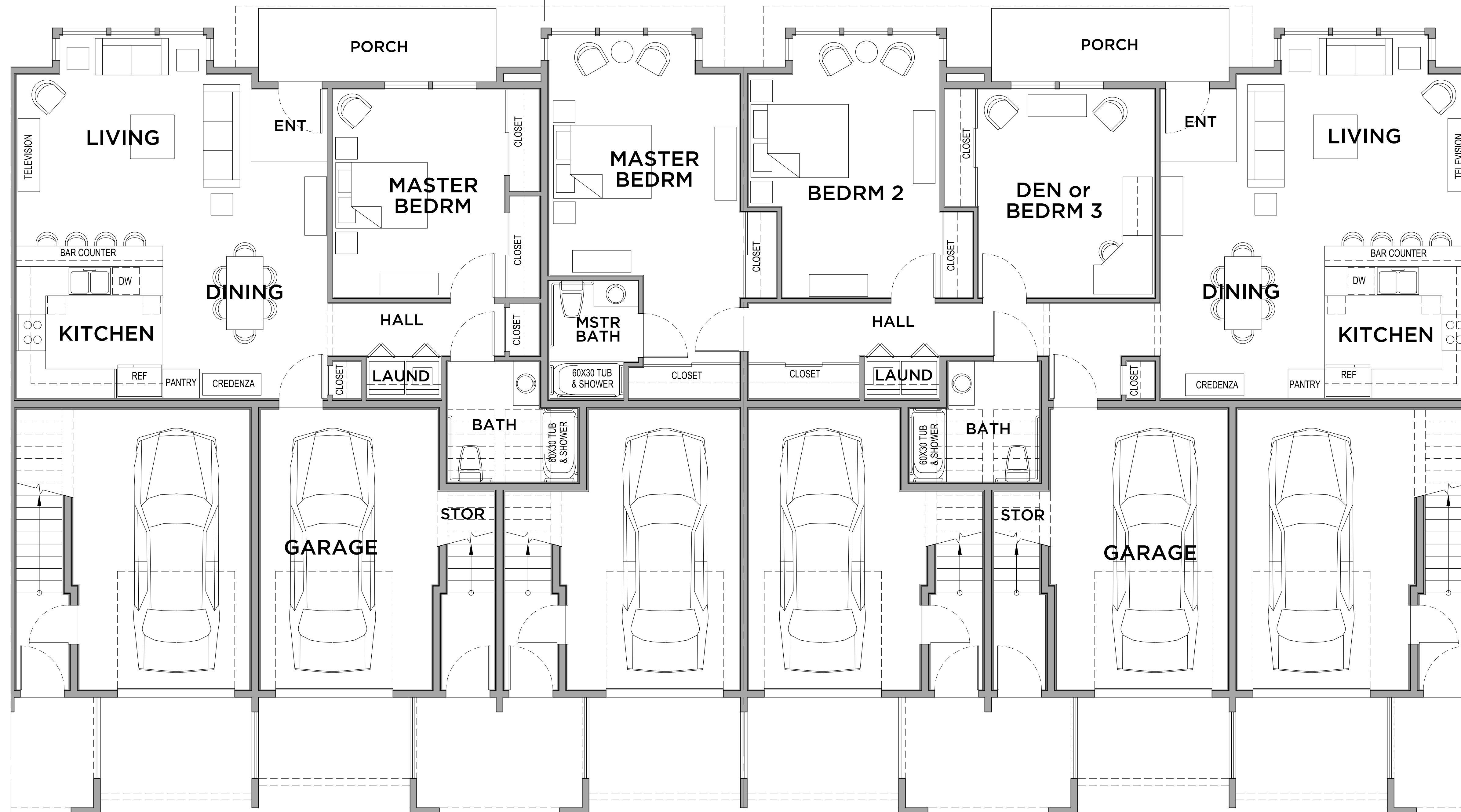
FIRST FLOOR

FLAT 4

1575 SQ FT 3-BEDRM, 2-BATH ADA FLAT

FIRST FLOOR

FLAT 5



Revisions
 140128 Concept Des Rev
 160114 Prelim Des Rev

Job Number
 1332

Project Architect
 PAUL GILGER

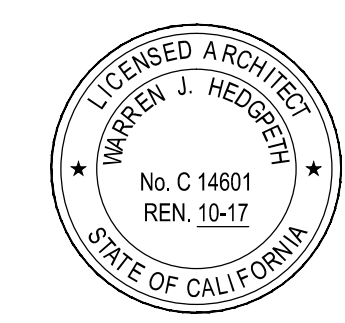
Drawn By
 PAUL GILGER

Date
 DECEMBER 2013

Sheet

A2
 of .

NOT FOR CONSTRUCTION



Revisions
 140128 Concept Des Rev
 160114 Prelim Des Rev

Job Number
 1332

Project Architect
 PAUL GILGER

Drawn By
 PAUL GILGER

Date
 DECEMBER 2013

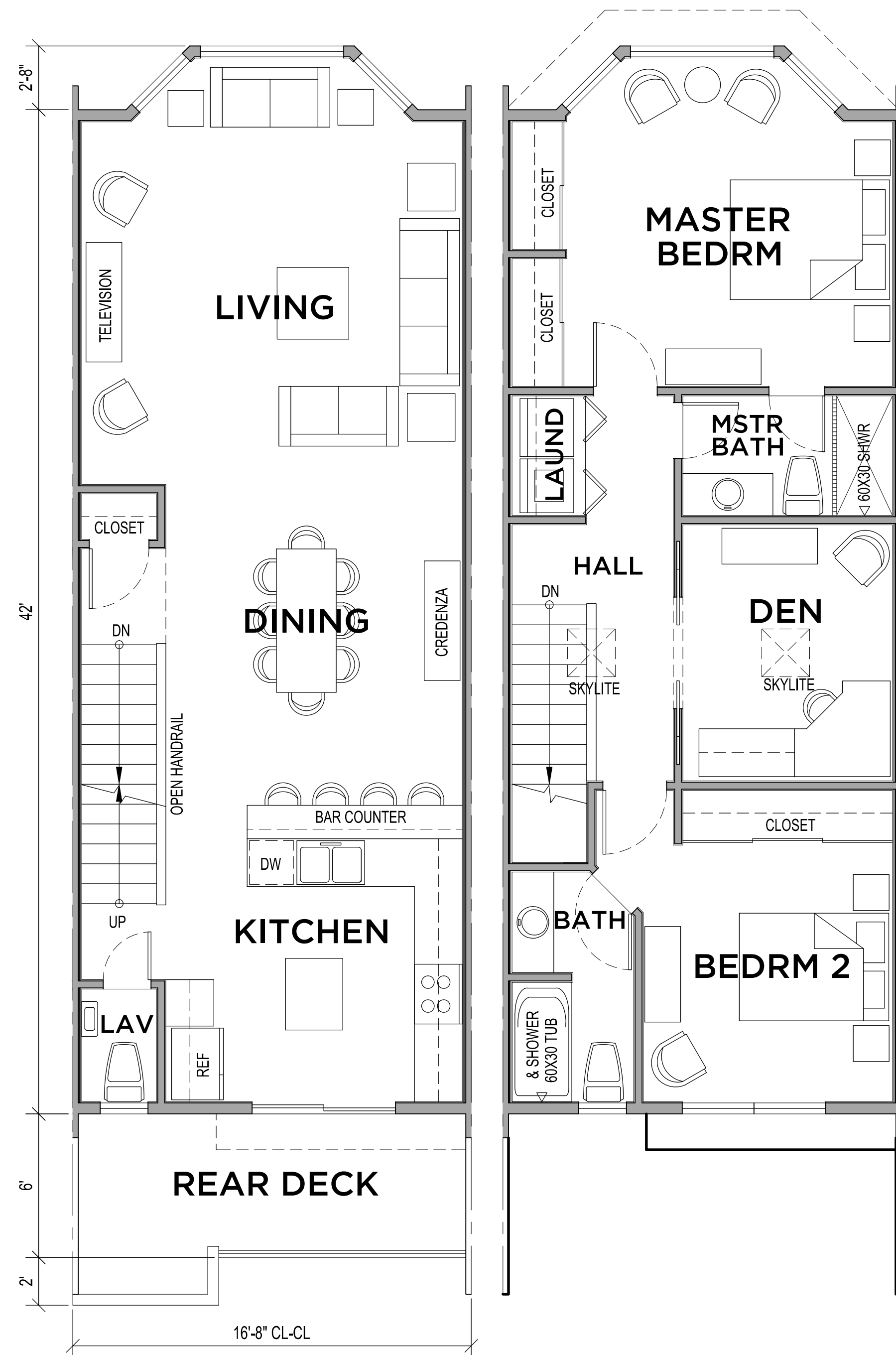
Sheet
A3

NOT FOR CONSTRUCTION
 of .

1458 SQ FT 2-BEDRM, 2.5-BATH TOWNHOUSE

SECOND FLOOR

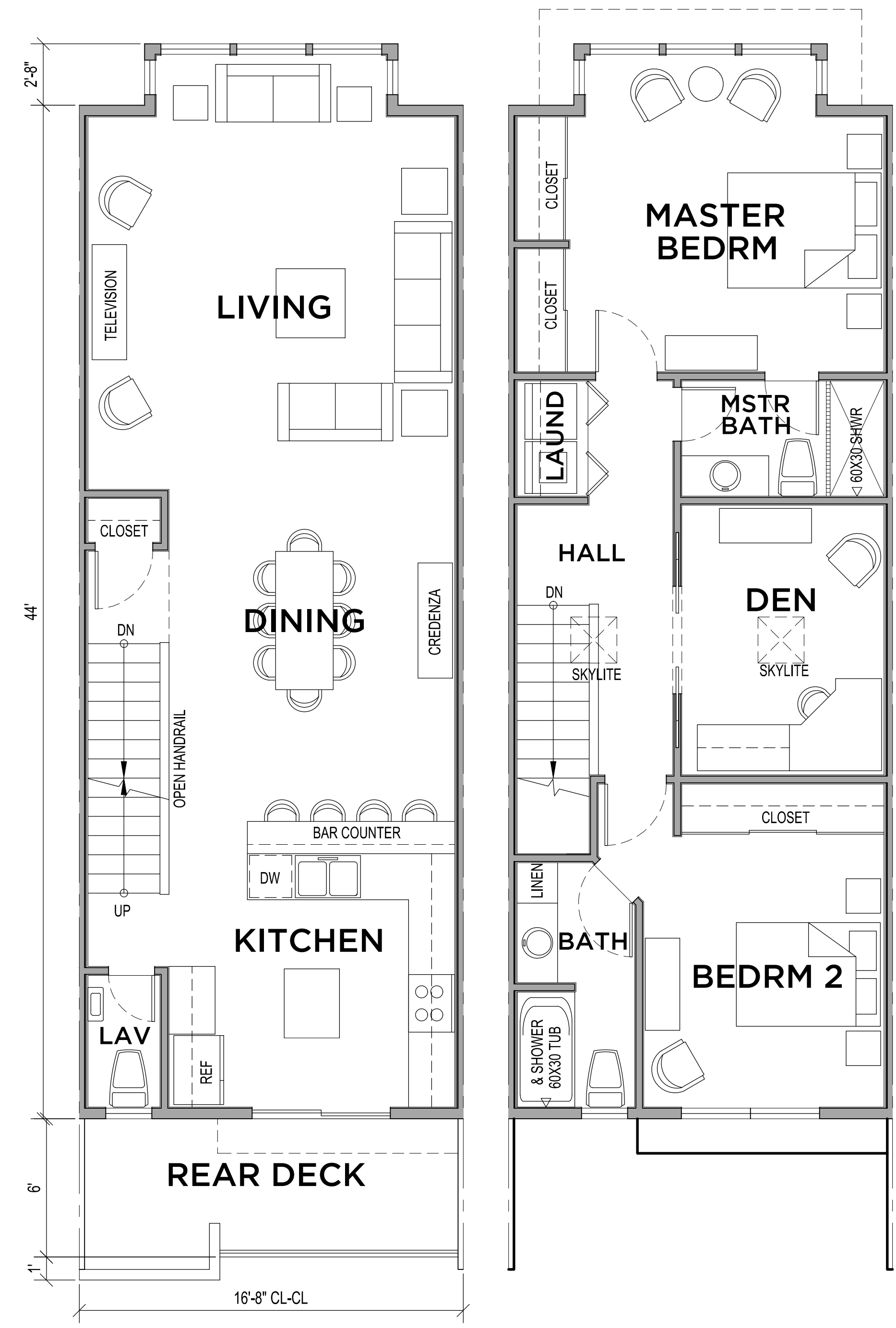
THIRD FLOOR



1525 SQ FT 2-BEDRM, 2.5-BATH TOWNHOUSE

SECOND FLOOR

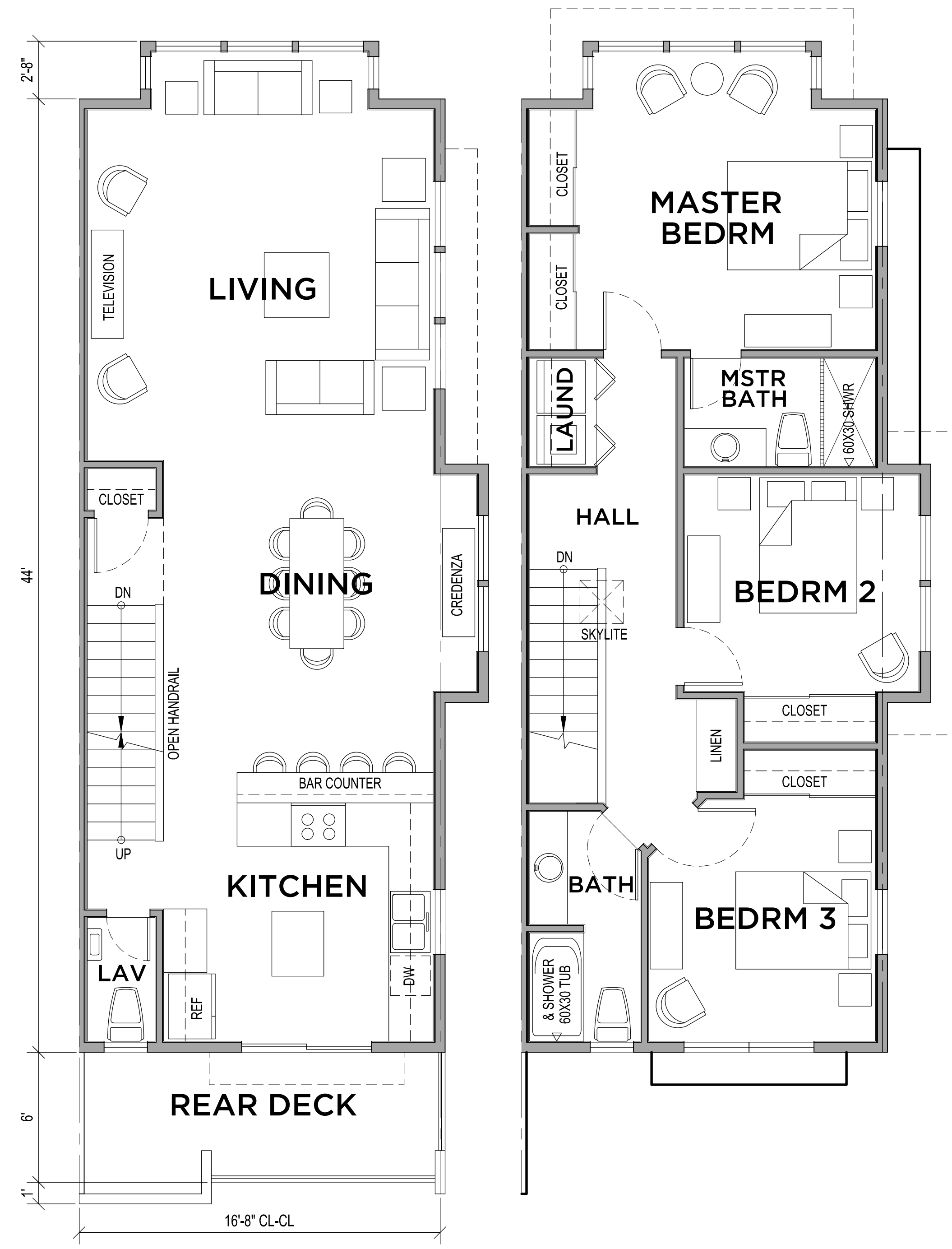
THIRD FLOOR



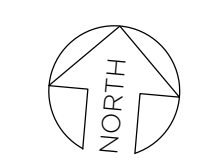
1569 SQ FT 3-BEDRM, 2.5-BATH TOWNHOUSE END UNIT

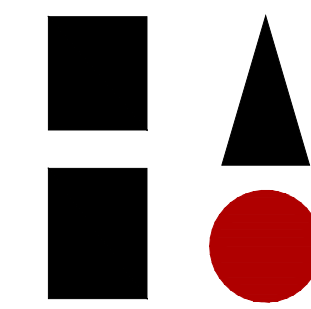
SECOND FLOOR

THIRD FLOOR



TOWNHOUSES
SCHEMATIC DESIGN FLOOR PLANS





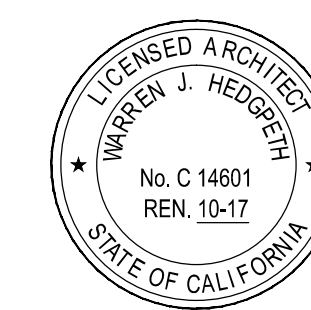
WARREN
Hedgpeth
ARCHITECTS

2321 Bethards Drive
Santa Rosa, California
95405
Phone 707 523 7010
Fax 707 542 2328

PARK LANE II APARTMENTS
Santa Rosa, California

ART & BRAD BERGESON
C/O MIKE ZALKASKE, PAB INVESTMENTS, LLC
5241 SUNRIDGE DRIVE, FAIRFIELD CA 94534
(707) 765 8944

ASSEMBLED BUILDING
SCHEMATIC DESIGN FLOOR PLANS



Revisions
140128 Concept Des Rev
160114 Prelim Des Rev

Job Number
1332

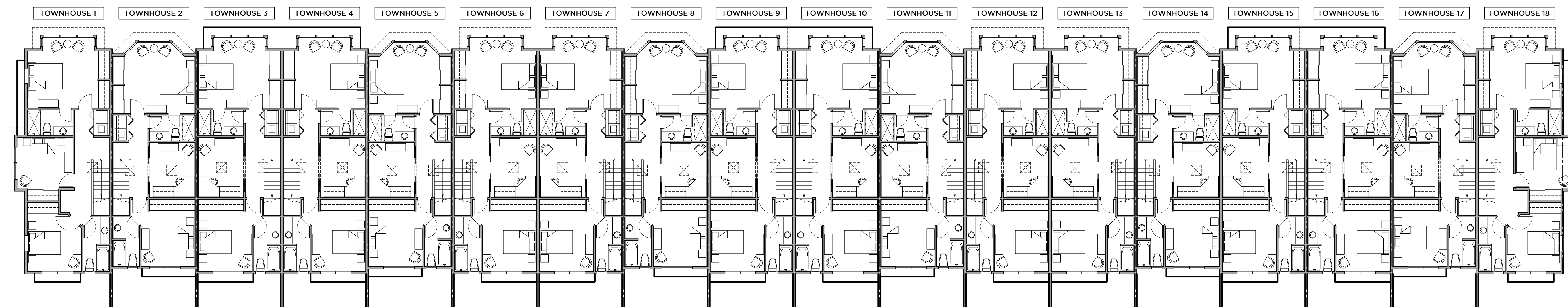
Project Architect
PAUL GILGER

Drawn By
PAUL GILGER

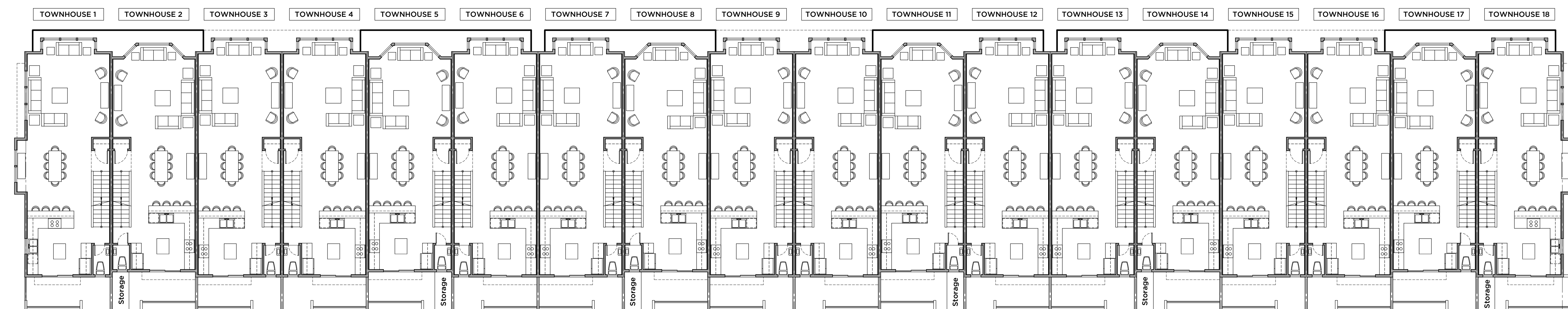
Date
DECEMBER 2013

Sheet

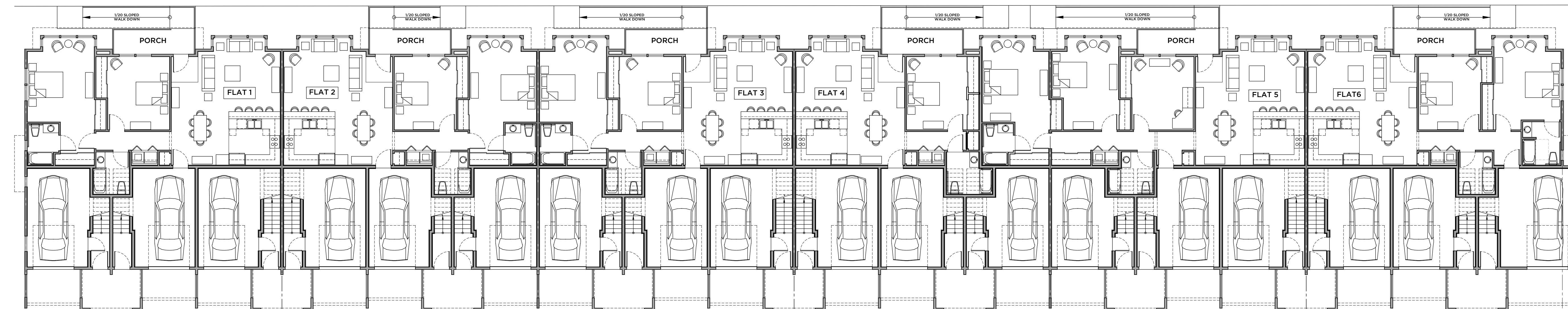
A4
of .



THIRD FLOOR



SECOND FLOOR



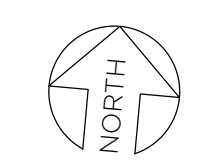
FIRST FLOOR

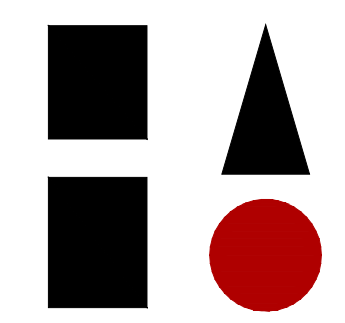
ASSEMBLED BUILDING
SCHEMATIC DESIGN FLOOR PLANS



DRAWING SCALE 3/32" = 1'-0"

NOT FOR CONSTRUCTION





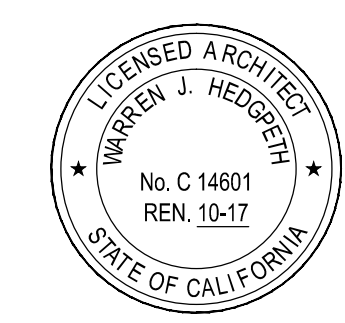
WARREN
Hedgpeth
ARCHITECTS

2321 Bethards Drive
Santa Rosa, California
95405
Phone 707 523 7010
Fax 707 542 2328

PARK LANE II APARTMENTS
Santa Rosa, California

ART & BRAD BERGESSON
C/O MIKE ZALKASKE, PAB INVESTMENTS, LLC
5241 SUNRISE DRIVE, FAIRFIELD CA 94534
(707) 765 8944

ASSEMBLED BUILDING
SCHEMATIC DESIGN
EXTERIOR ELEVATIONS



Revisions
140128 Concept Des Rev
160114 Prelim Des Rev

Job Number
1332

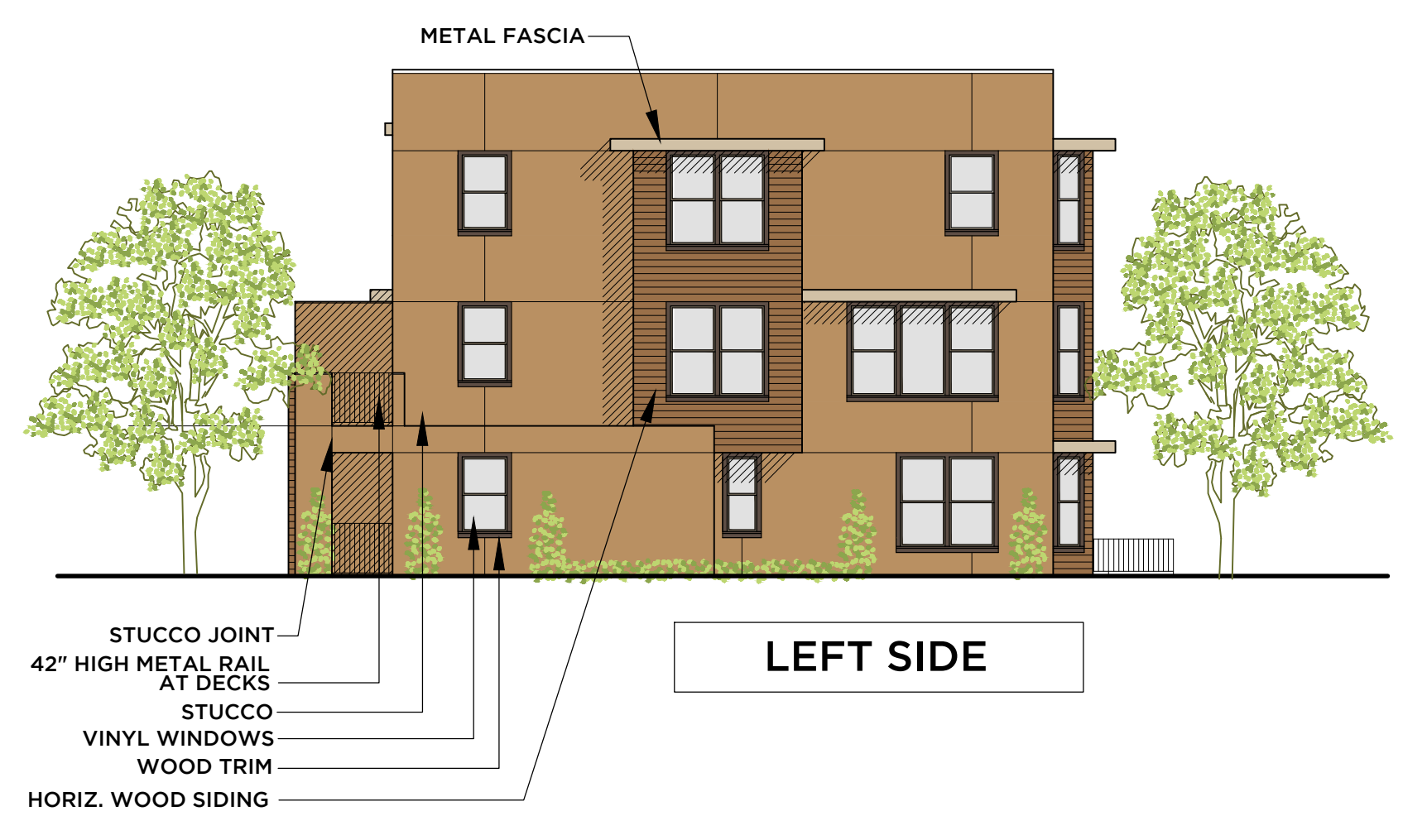
Project Architect
PAUL GILGER

Drawn By
PAUL GILGER

Date
DECEMBER 2013

Sheet

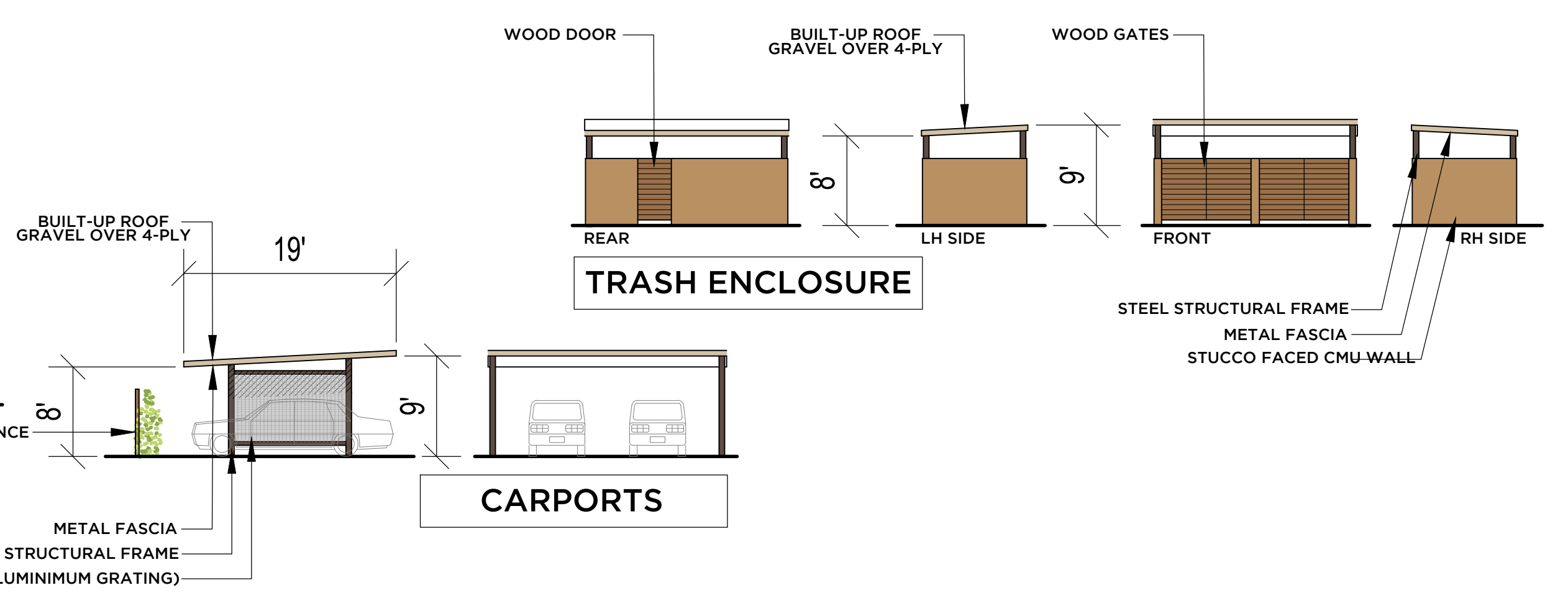
A5
of .



LEFT SIDE



RIGHT SIDE



TRASH ENCLOSURE

CARPORTS



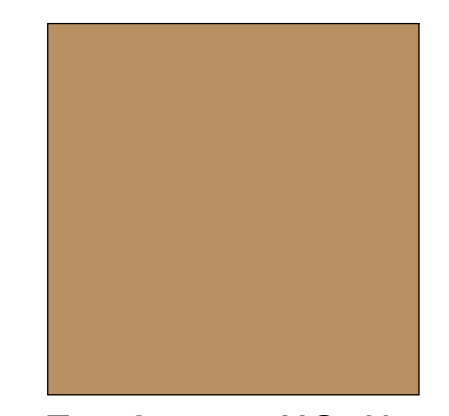
FRONT



REAR

THIS HALF OF BUILDING SHOWN WITHOUT LANDSCAPING FOR CLARITY

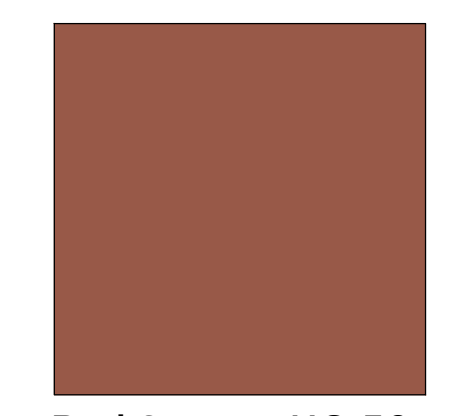
COLOR SELECTIONS
All paints are Benjamin Moore HC Historical Colors



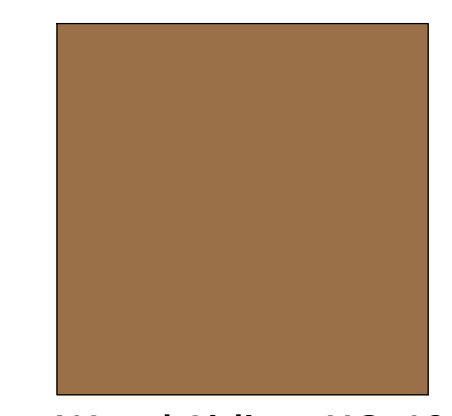
Tan Stucco: HC-41
Richmond Gold



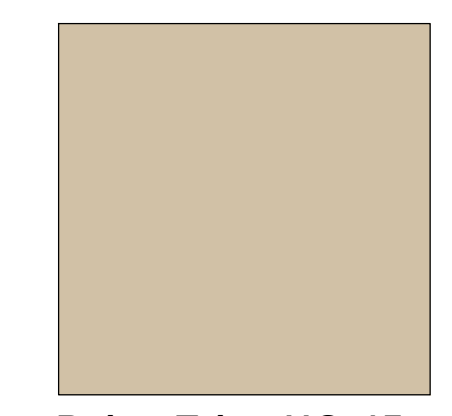
Gray Stucco: HC-166
Kendall Charcoal



Red Stucco: HC-50
Georgian Brick



Wood Siding: HC-40
Greenfield Pumpkin



Beige Trim: HC-45
Shaker Beige



Brown Trim: HC-70
Van Buren Brown

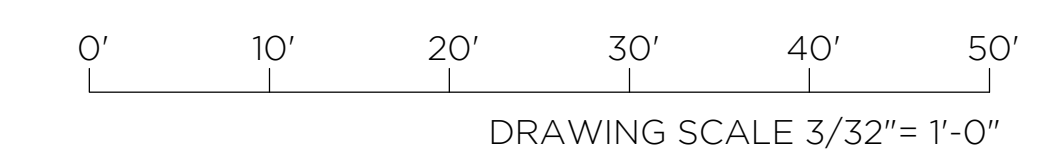


Vinyl Window Frames:
Milgard Taupe

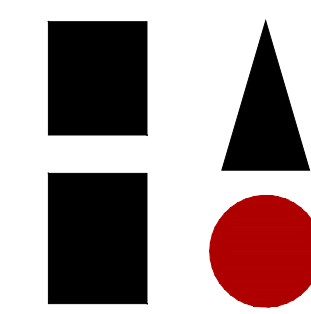


Arroyo Sconce
Huntington HS-12

ASSEMBLED BUILDING
SCHEMATIC DESIGN EXTERIOR ELEVATIONS



NOT FOR CONSTRUCTION

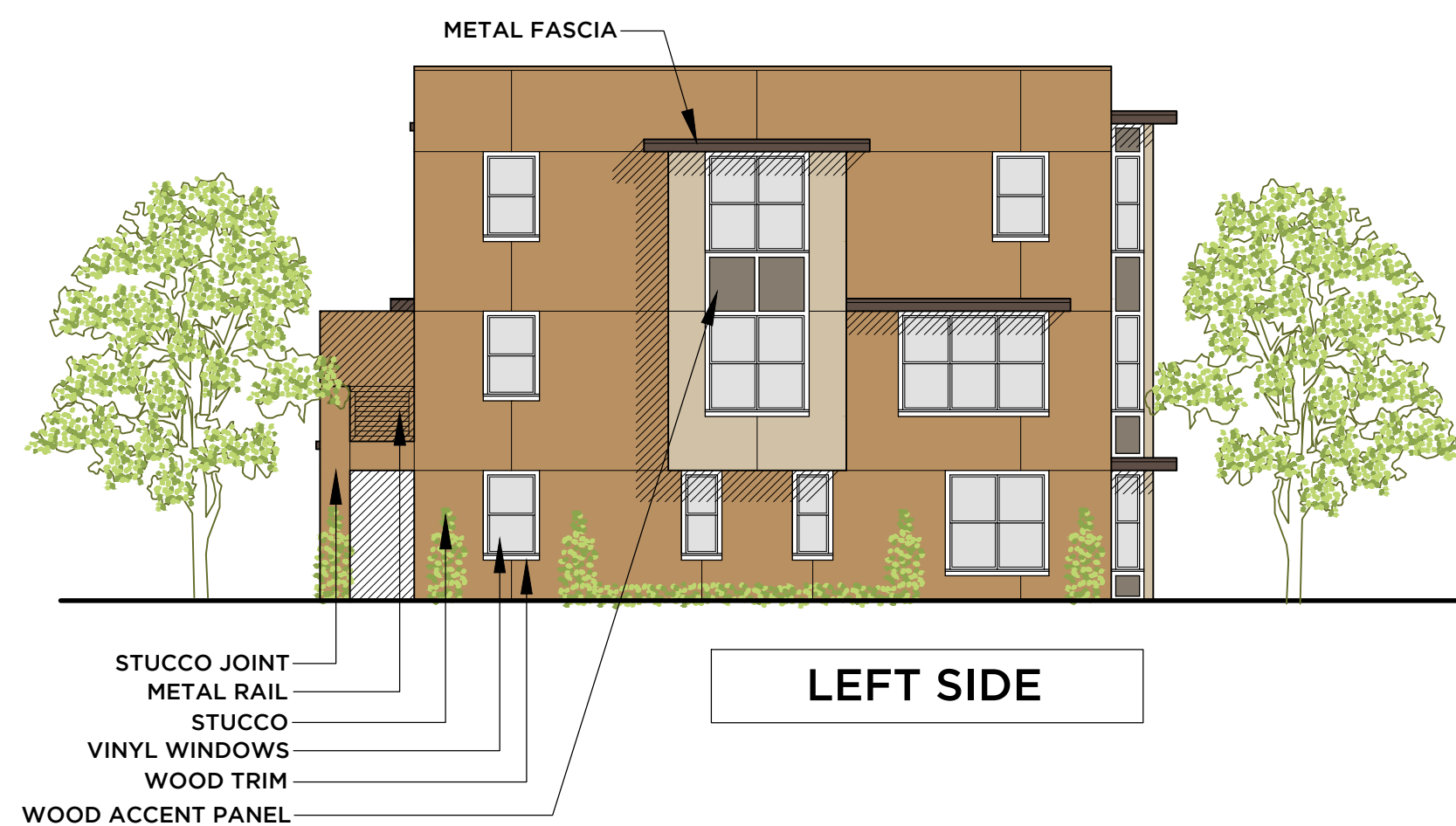


WARREN
Hedgpeth
ARCHITECTS

2321 Bethards Drive
Santa Rosa, California
95405
Phone 707 523 7010
Fax 707 542 2328

PARK LANE II APARTMENTS
Santa Rosa, California

ART & BRAD BERGESON
C/O MIKE ZALKASKE, PAB INVESTMENTS, LLC
5241 SUNRIDGE DRIVE, FAIRFIELD CA 94534
(707) 765 8944



LEFT SIDE



RIGHT SIDE



FRONT

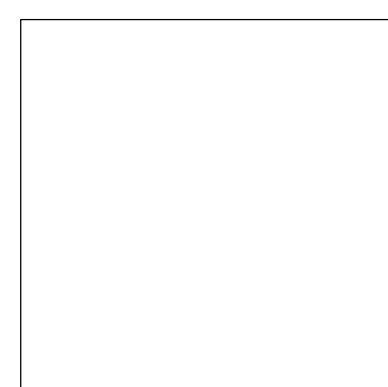


REAR

METAL GARAGE DOORS

PREVIOUS EXTERIOR ELEVATIONS
FROM CONCEPT DESIGN REVIEW

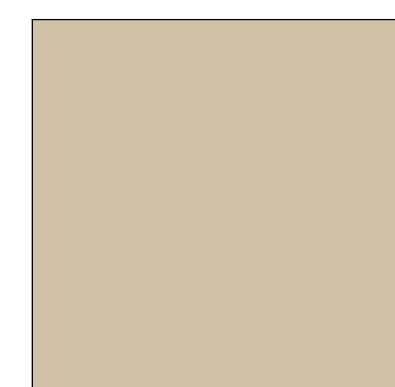
COLOR SELECTIONS
All paints are Benjamin Moore HC Historical Colors



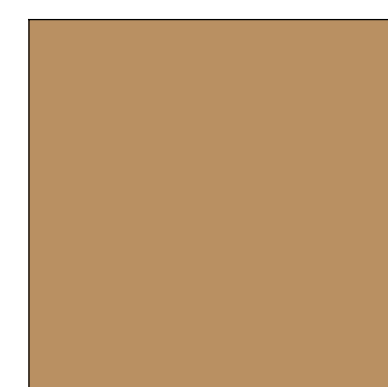
Window Frames:
White



Gray Stucco & Accents:
HC-168 Chelsea Gray



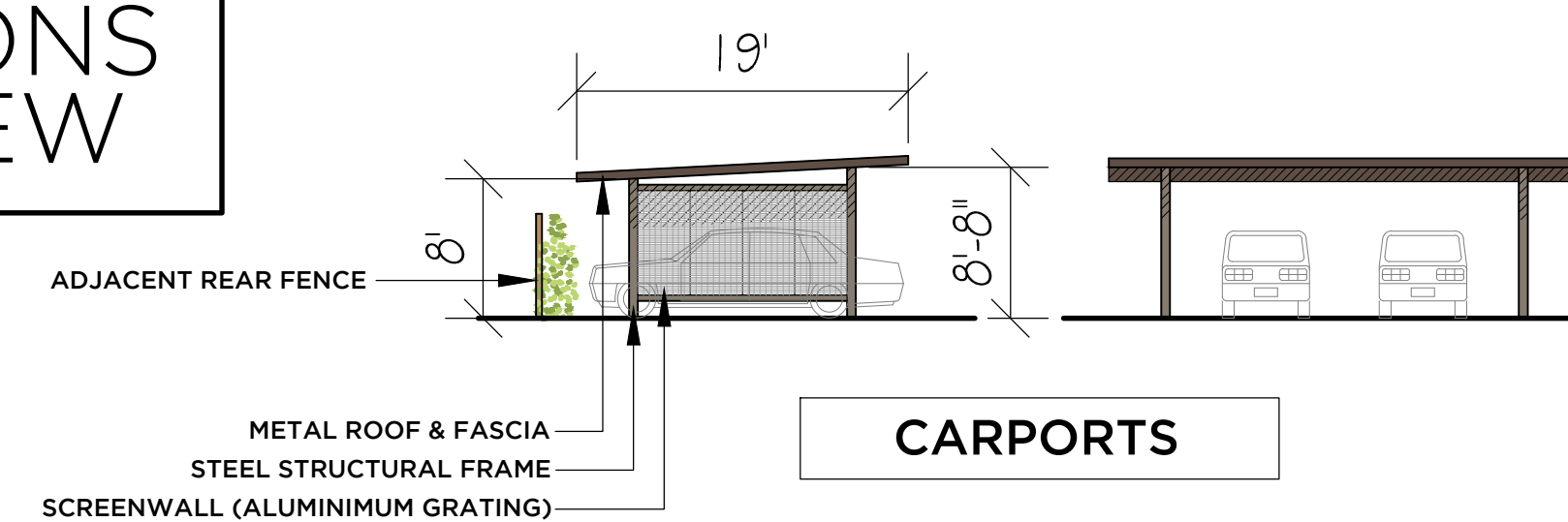
Beige Stucco & Accents:
HC-45 Shaker Beige



Tan Stucco & Accents:
HC-41 Richmond Gold



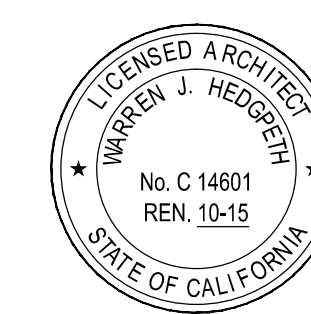
Brown Trim:
HC-70 Van Buren Brown



PREVIOUS EXTERIOR ELEVATIONS FROM CONCEPT DESIGN REVIEW

ASSEMBLED BUILDING
DRAWING SCALE 3/32" = 1'-0"

ASSEMBLED BUILDING
PREVIOUS EXTERIOR ELEVATIONS
FROM CONCEPT DESIGN REVIEW



Revisions
140128 Concept Des Rev

Job Number
1332

Project Architect
PAUL GILGER

Drawn By
PAUL GILGER

Date
DECEMBER 2013

Sheet

A6
of .

NOT FOR CONSTRUCTION