

Santa Rosa Plain Groundwater Sustainability Agency Funding Options

Joint City Council/Board of Public Utilities Meeting
March 27, 2018



OUR FUTURE IN EVERY DRÖP

Presentation Outline

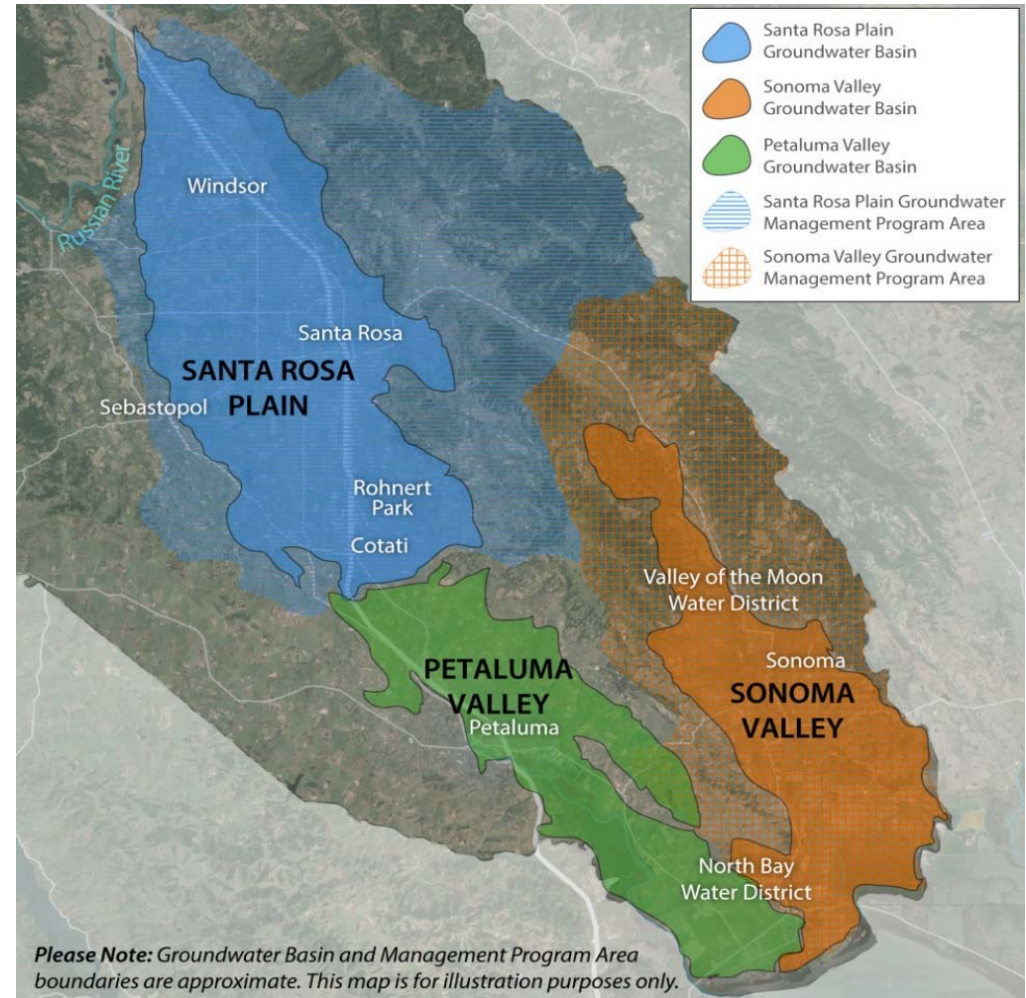
- Sustainable Groundwater Management Act (SGMA) and GSA Background
- Current GSA Funding
- Rate/Fee Options



OUR FUTURE IN EVERY DRÖP

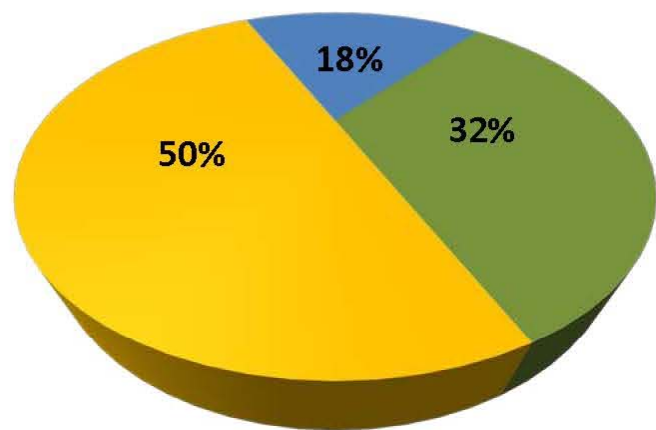
SGMA Brief Summary

- Became law Jan 1st 2015
- Applies to medium and high priority basins
- Develop GSA by June 2017
- Develop GSP by 2022 and achieve sustainability by 2042

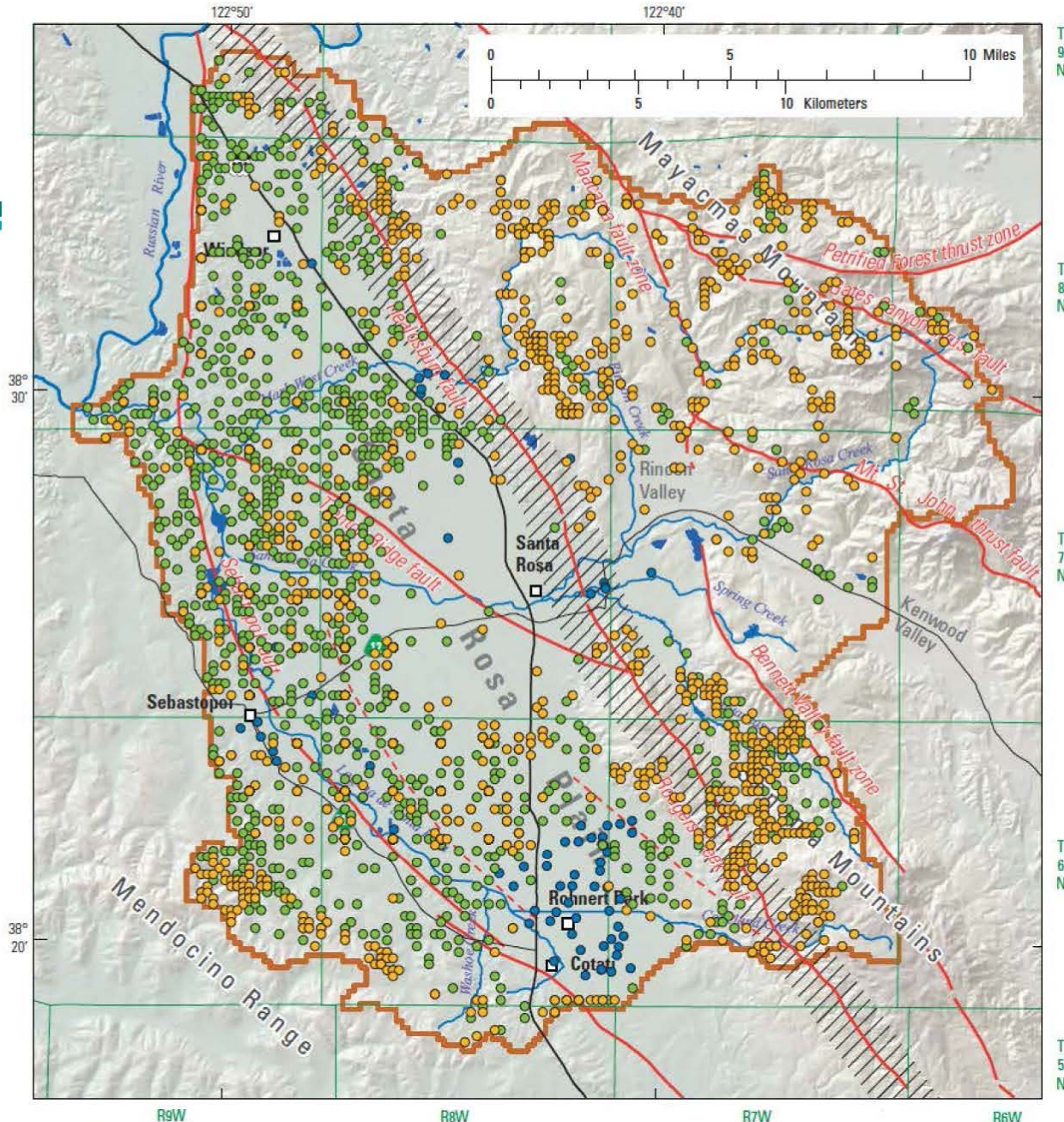


Water Wells in the Santa Rosa Plain

Santa Rosa Plain Estimated Groundwater Demands by Use Type: Average for 1976-2010 (USGS, 2014)



- Agriculture
- Rural Domestic
- Municipal Supply



Base from U.S. Geological Survey digital data, 1:1,000,000, downloaded 2003 State Plane Projection, Fipzone 402. Shaded relief base from 1:250,000 scale Digital Elevation Model; sun illumination from northwest at 30 degrees above horizon.

EXPLANATION

- Rodgers Creek fault zone
- Inferred fault
- Domestic well
- Agricultural well
- Public-supply well

Current GSA Funding

- The first year of the GSA was funded by its member agencies
- These agencies will fund one more year
- Expect GSA to have its own funding source after two years of operations

Member Agency	FY 2017-18 Commitment	FY 2018-19 Commitment
Sonoma Resource Conservation District	\$20,000	\$20,000
City of Cotati	\$55,000	\$64,000
City of Rohnert Park	\$55,000	\$64,000
City of Santa Rosa	\$55,000	\$64,000
Town of Windsor	\$55,000	\$64,000
Gold Ridge Resource Conservation District	\$55,000	\$64,000
County of Sonoma	\$55,000	\$64,000
Sonoma County Water Agency	\$55,000	\$64,000
PUC-regulated and mutual water companies	\$55,000	\$64,000
TOTAL	\$460,000	\$532,000

Preliminary Metrics*

- 4,116 known wells
- 29,342 acre feet (AF) estimated annual groundwater use in Santa Rosa Plain GSA
- 78,173 taxable parcels
- 80,039 taxable acres

* Subject to on-going refinement. Current numbers are based on data provided by M. Trotta on 2/13/18.



OUR FUTURE IN EVERY DRÖP

Preliminary Funding Options

- Regulatory Fees - Imposed on wells or groundwater usage
- Charges on Groundwater – Imposed on groundwater usage
- Parcel Tax – Per parcel or per acre
- State Intervention Fees – If GSA cannot become self-sufficient

Preliminary Cost Ranges

- Per well charge:
 - \$100 to \$170
 - Per Acre Foot (AF) charge:
 - \$14 to \$23 per Acre Foot
 - \$0.04 to \$0.07 per 1,000 gallons
 - Per Parcel Charge:
 - \$5 to \$9
 - Per Acre Charge:
 - \$5 to \$9
-
- Ranges shown are with and without grant funding.
 - Other factors may affect final calculation of charges.



OUR FUTURE IN EVERY DRÖP

State-Based Intervention Fees

FEES beginning in Water Year 2018

**Base
Filing Fee**
(per well)

\$300

+

**Volumetric
Rate**
(per acre-foot)

Unmanaged
\$25

Probation
\$40*

Interim Plan
\$55*

+

**Late
Fee**
(per month)

25%

*special studies extra

Meetings

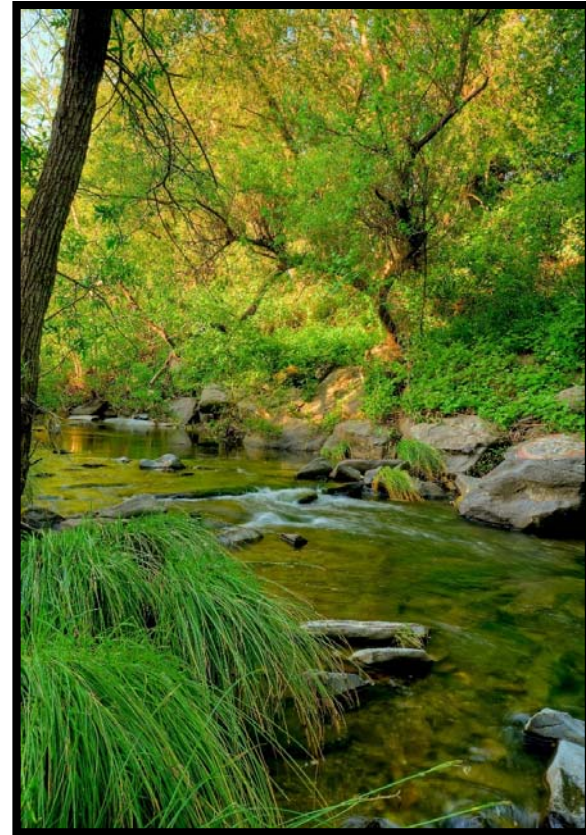
- Community Meeting
 - March 21, 2018
- Advisory Committee Meetings
 - April 9, 2018 at 3PM at UFO
 - May 7, 2018 at 3PM at UFO
- GSA Board Meetings
 - April 12, 2018 at 1PM at UFO
 - June 14, 2018 at 1PM at UFO
- www.sonomacountygroundwater.org



OUR FUTURE IN EVERY DRÖP

Thank You

Questions/Comments?



OUR FUTURE IN EVERY DRÖP