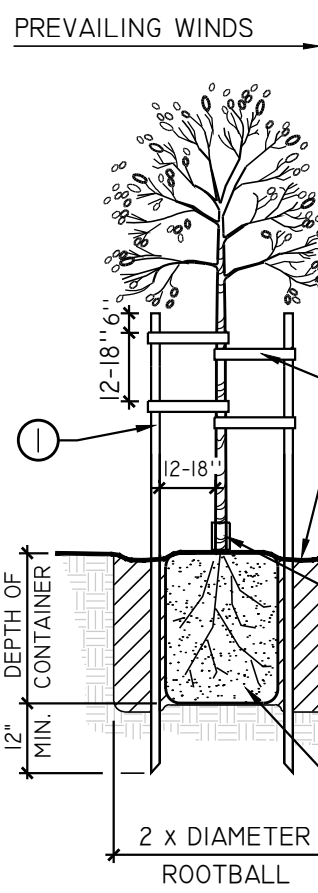
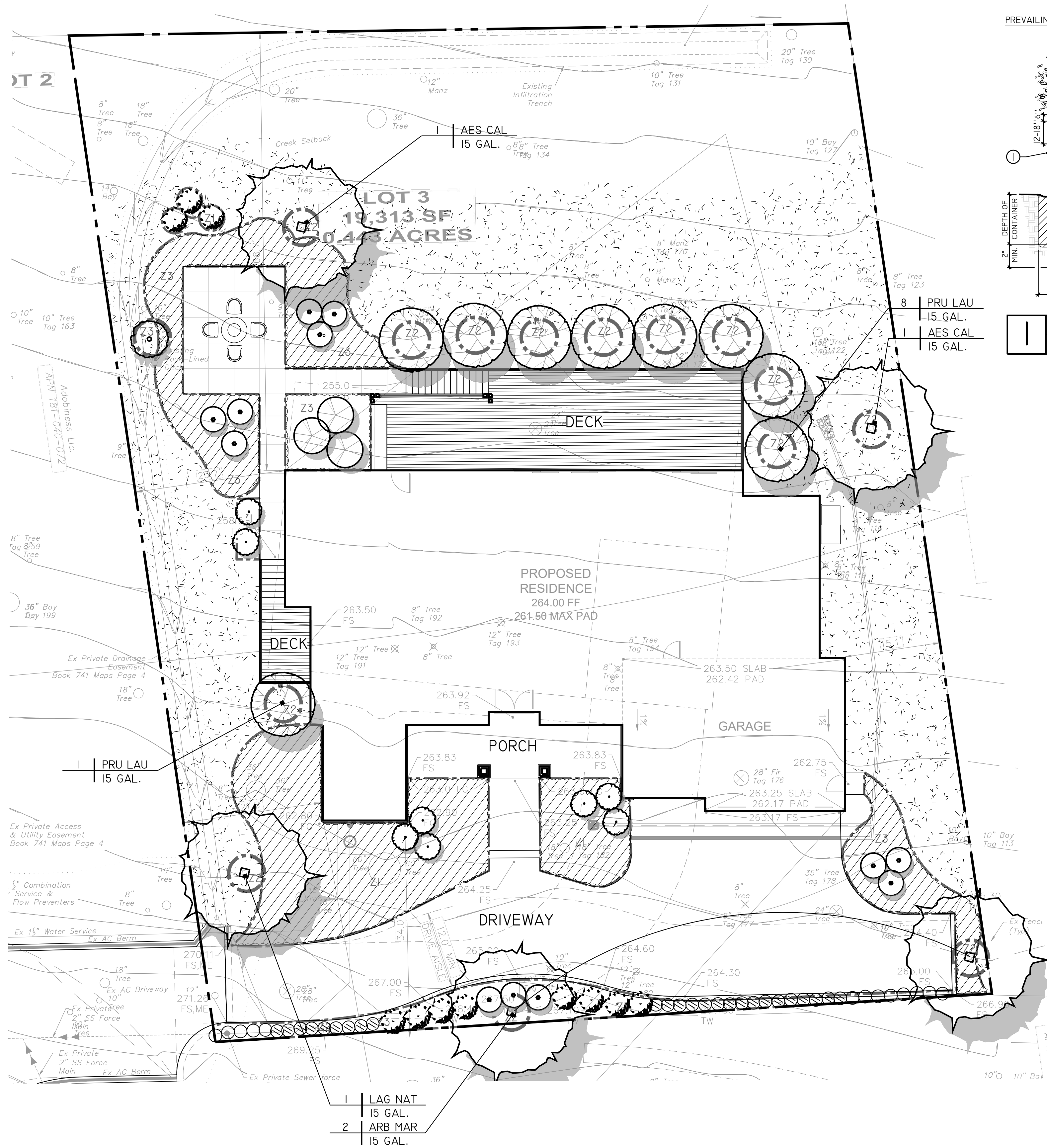


CONCEPTUAL PLANTING PLAN
SINGLE FAMILY RESIDENCE
794 LOS OLIVOS ROAD, SANTA ROSA CALIFORNIA 95404
MARRON ROAD VENTURES



NOTES:

1. CROWN OF ROOTBALL TO BE 1" ABOVE FINISH GRADE.
2. FOR ADDITIONAL INFORMATION REFER TO PLANTING NOTES AND SPECIFICATIONS.
- ① 10' LODGE POLE STAKE BOTH SIDES, 'TOMAHAWK TREE STABILIZER SYSTEM' (800) 845-3343, OR APPROVED EQUAL
- ② CINCH TIE, ARBOR TIE, OR APPROVED EQUAL
- ③ A SHALLOW BASIN 2" DEEP SHALL BE FORMED AROUND BALL BELOW FINISH GRADE. TREES PLANTED IN TURF AREAS SHALL NOT HAVE BASINS.
- ④ FINISH GRADE
- ⑤ TREES INSTALLED WITHIN TURF AREAS SHALL BE INSTALLED WITH 'ARBOR-GARD' OR APPROVED EQUAL AT BASE OF TRUNK.
- ⑥ BACKFILL IN ACCORDANCE WITH PROJECT AGRICULTURAL SUITABILITY SOILS REPORT
- ⑦ ROOTBALL

1 TREE PLANTING

SCALE: N.T.S. (DOUBLE STAKE - 15 GAL. & 24" BOX)

PLANTING NOTES

CONTRACTOR SHALL PROVIDE ALL LABOR, MATERIALS, AND EQUIPMENT NECESSARY TO FURNISH AND INSTALL PLANT MATERIAL AS SHOWN ON THE DRAWINGS AND AS DESCRIBED IN THE SPECIFICATIONS.

UNLESS DESIGNATED ON THE DRAWINGS OTHERWISE, STRUCTURAL IMPROVEMENTS AND HARDSCAPE SHALL BE INSTALLED PRIOR TO PLANTING OPERATIONS.

ALL WORK ON THE IRRIGATION SYSTEM, INCLUDING HYDROSTATIC, COVERAGE, AND OPERATIONAL TESTS AND THE BACKFILLING AND COMPACTION OF TRENCHES SHALL BE PERFORMED PRIOR TO PLANTING OPERATIONS.

PLANT LIST ON THE DRAWINGS SHALL BE USED AS A GUIDE ONLY. CONTRACTOR SHALL TAKEOFF AND VERIFY SIZES AND QUANTITIES BY PLAN CHECK.

SAMPLES OF FERTILIZERS, ORGANIC AMENDMENT, SOIL CONDITIONS, AND SEED SHALL BE SUBMITTED PRIOR TO INCORPORATION. CONTRACTOR SHALL FURNISH TO THE CITY/OWNER'S AUTHORIZED REPRESENTATIVE A CERTIFICATE OF COMPLIANCE FOR SUCH FURNISHED MATERIALS.

LOCATIONS OF PLANT MATERIAL SHALL BE REVIEWED ON SITE BY THE CITY/OWNER'S AUTHORIZED REPRESENTATIVE PRIOR TO INSTALLATION.

AMENDMENTS, AS INDICATED IN THE SOILS REPORT SHOWN ON THE DRAWINGS, ARE BASED ON AGRICULTURAL SUITABILITY SOILS TESTS PERFORMED PRIOR TO GRADING AND WERE PRESENTED FOR BIDDING PURPOSES. IF NO SOILS REPORT EXISTS, CONTRACTOR SHALL PROPOSE ON AMENDMENTS AS STATED IN THE SPECIFICATIONS. CLIENT OR CONTRACTOR SHALL OBTAIN AGRICULTURAL SOILS TESTING AND RECOMMENDATIONS AFTER GRADING OPERATIONS AND PRIOR TO PLANT INSTALLATION.

TREES SHALL BE PLANTED NO CLOSER THAN TEN FEET (10') FROM UTILITIES.

TREES PLANTED WITHIN FIVE FEET (5') OF HARDSCAPE OR STRUCTURES SHALL BE INSTALLED WITH A ROOT BARRIER AS APPROVED BY THE CITY/OWNER'S AUTHORIZED REPRESENTATIVE.

IF, DURING PLANTING OPERATIONS THERE SEEMS TO BE MINIMAL OR NO PERCOLATION IN PLANTING PITS, CONTRACTOR SHALL CEASE PLANTING OPERATIONS AND IMMEDIATELY NOTIFY THE CITY/OWNER'S AUTHORIZED REPRESENTATIVE TO DISCUSS ALTERNATIVE TO MAINTAINING POSITIVE ROOTBALL DRAINAGE MEASURES.

Maximum Applied Water Allowance

The following calculations will help you determine your site specific water budget and establish a planting mix that will allow you to meet your water budget. Your Estimated Total Water Use must be less than your Maximum Applied Water Allowance.

1.) **Maximum Applied Water Allowance (MAWA) RESIDENTIAL**
 $MAWA = (ETO) \times (0.62) \div [(0.55 \times LA) + (0.45 \times SLA)]$

Where:
ETO = Annual Net Reference Evapotranspiration (inches)
0.55 = ET Adjustment Factor
LA = Landscaped Area (square feet)
0.42 = Conversion factor (to gallons per square foot)
SLA = Portion of the landscape area identified as Special Landscape Area (square feet)
0.45 = the additional ET adjustment factor for Special Landscape Area (1.0 - 0.55 = 0.45)

A.) Net Evapotranspiration Calculation

$$\frac{45.51}{27.12} \times .25 = \frac{6.78}{38.73}$$

Net Evapotranspiration Calculation = Annual ETO - Effective Rainfall = 38.73

B.) Adjusted Landscape Area Calculation

$$\frac{2861}{0} \times 0.55 = \frac{1573.55}{0}$$

Sum of Adjusted Landscape Area = 1573.55

$$MAWA = \frac{38.73}{1573.55} \times 0.62 \times 1573.55 = 37785 \text{ gallons}$$

2.) Estimated Total Water Use (ETWU)

A.) Net Evapotranspiration Calculation

$$\text{Net Evapotranspiration Calculation} = \text{Annual ETO} - \text{Effective Rainfall} = 38.73$$

B.) Adjusted Landscape Area Calculation

$$\frac{0}{1457} \times 0.1 = \frac{0}{446.1}$$

$$\frac{1457}{1374} \times 0.3 = \frac{0}{824.4}$$

$$\frac{0}{0} \times 1.0 = \frac{0}{0}$$

Sum of Adjusted Landscape Area = 1,271

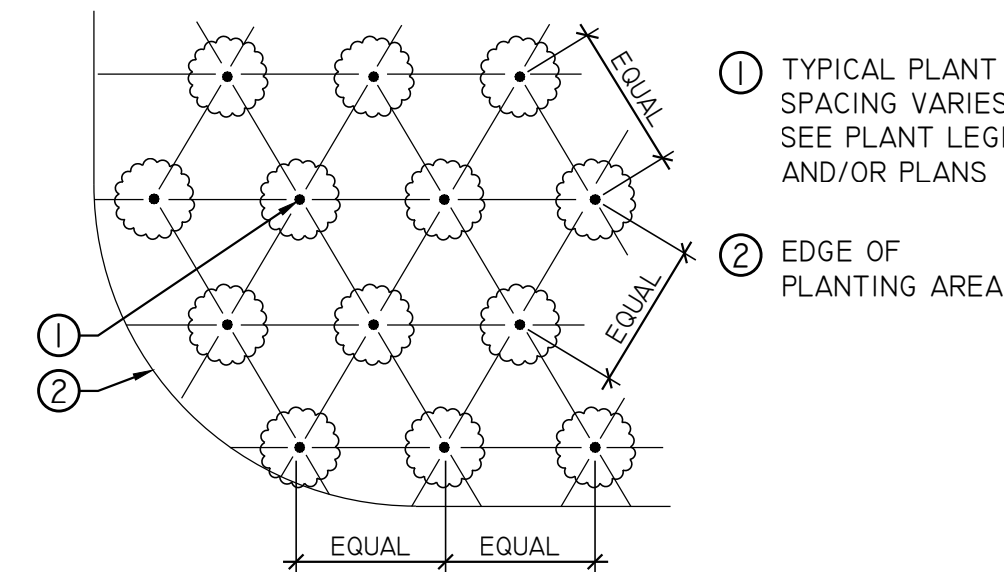
$$ETWU = \frac{38.73}{1,271} \times 0.62 \times 1,271 \div 0.81 = 37664 \text{ gallons}$$

Irrigation Efficiency Factor	
Square footage of landscape on drip	2861
Square footage of landscape on spray	0
Total square footage of landscape	2861
Adjusted Irrigation Efficiency Factor	0.81

G:\Shared drives\TemplateServer\MWELO-WUCOLS\SantaRosa, 2021 Appendix A Spreadsheet

NOTES:

1. ALL PLANTS SHALL BE PLANTED AT EQUAL SPACING (TRIANGULAR) UNLESS OTHERWISE INDICATED ON PLANS.
2. AS APPROPRIATE, CENTERLINE OF PLANTS SHALL BE 1/2 OF EQUAL SPACING MINIMUM FROM EDGE OF PLANTING AREA.
3. INFILL PLANTS AS REQUIRED TO MAINTAIN SPACING AT IRREGULAR EDGES.
4. FOR ADDITIONAL INFORMATION REFER TO PLANTING NOTES AND SPECIFICATIONS.

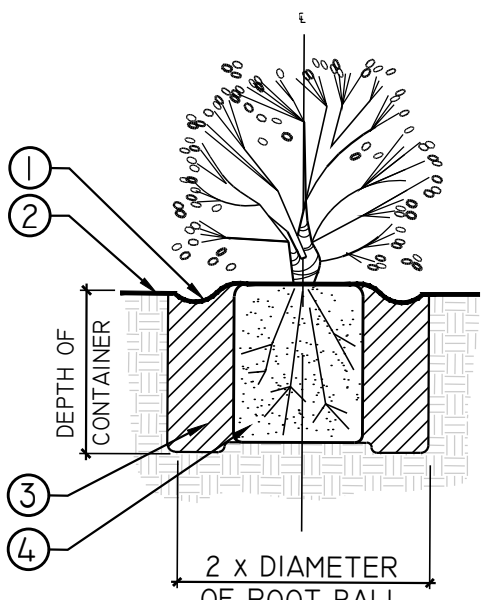


2 GROUND COVER SPACING

SCALE: N.T.S.

NOTES:

1. CROWN OF ROOTBALL TO BE 1/2"-1" ABOVE FINISH GRADE.
2. FOR ADDITIONAL INFORMATION REFER TO PLANTING NOTES AND SPECIFICATIONS.



3 SHRUB PLANTING

SCALE: N.T.S.

MWELO STATEMENT

"I HAVE COMPLIED WITH THE CRITERIA OF THE ORDINANCE AND APPLIED THEM FOR THE EFFICIENT USE OF WATER IN THE IRRIGATION PLAN"

Michael A. Cook

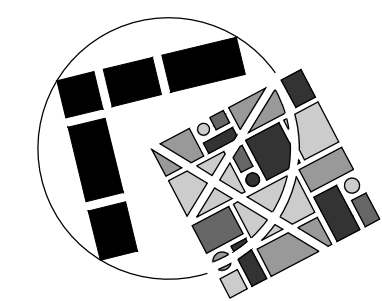
MICHAEL A. COOK
REGISTERED LANDSCAPE ARCHITECT #5123

09/02/2021

DATE

PLANT PALETTE

ABBREV.	BOTANICAL NAME	COMMON NAME	WUCOLS	SIZE	QTY	REMARKS/SPACING
TREES						
AES CAL	AESCULUS CALIFORNICA	CALIFORNIA BUCKEYE	VL	15 GAL.	2	SINGLE TRUNK
ARB MAR	ARBUTUS MARINA	STRAWBERRY TREE	L	15 GAL.	2	SINGLE TRUNK
LAG NAT	LAGERSTROMIA INDICA	NATCHEZ CRAPE	L	15 GAL.	1	SINGLE TRUNK
	"NATCHEZ"	MYRTLE				
PRU LAU	PRUNUS LAUROCERASUS	ENGLISH LAUREL	L	15 GAL.	10	MULTI TRUNK
SHRUBS						
ANT SPP	ANTHYRIUM SPP	LADY FERN	M	5 GAL.	13	2' O.C. SPACING
CAM SAS	CAMELLIA SASANQUA	SASANQUA CAMELLIA	M	5 GAL.	3	8' O.C. SPACING
FUC MAG	FUCHSIA MAGELLANICA	HARDY FUCHSIA	L	5 GAL.	2	4' O.C. SPACING
HYD QUE	HYDRANGEA QUERCIFOLIA	OAK LEAF HYDRANGEA	M	5 GAL.	18	4' O.C. SPACING
LOR CHI	LOROPETALUM CHINENSIS	RED FRINGE FLOWER	L	5 GAL.	8	4' O.C. SPACING
POL MUN	POLYSTICHUM MUNITUM	SWORD FERN	M	5 GAL.	24	3' O.C. SPACING
RHO KPH	RHODODENDRON 'UNIQUE'	UNIQUE RHODODENDRON	M	5 GAL.	1	6' O.C. SPACING
GRASSES						
FES GOL	FESTUCA 'GOLDEN TOUPEE'	GOLDEN BLUE FESCUE	L	1 GAL.	X	12" O.C. SPACING
HAK MAC	HAKONECHLOA MACRA	JAPANESE FOREST GRASS	L	1 GAL.	X	3' O.C. SPACING
LOM BZE	LOMANDRA LONGIFOLIA	DWARF MAT RUSH	L	1 GAL.	X	3' O.C. SPACING
	'BREEZE'					
LIR MUS	LIRIOPE MUSCARI	LILYTURF	M	1 GAL.	X	12" O.C. SPACING
PEN RUB	PENNISETUM RUBRUM	FOUNTAIN GRASS	L	1 GAL.	X	3' O.C. SPACING
GROUNDCOVERS						
ARCTOSTAPHYLOS UVA-ORSI	COMMON BEARBERRY		L	1 GAL.	X	6' O.C. SPACING
CAMPANULA	SERBIAN BELL FLOWER		M	1 GAL.	X	12" O.C. SPACING
PORSCHASKYANA						
ERICA DARLEYENSIS	WINTER HEATH		M	1 GAL.	X	3' O.C. SPACING
HELLEBORUS ORIENTALIS	HELLEBORE		L	1 GAL.	X	2' O.C. SPACING
HOSTA 'ABBY'	HOSTA		M	5 GAL.	X	2" O.C. SPACING
LAMIMUM MACULATA	SPOTTED DEADNETTLE		M	1 GAL.	X	2' O.C. SPACING
'WHITE NANCY'						
MYOPORUM PROSTRATE	MYOPORUM		L	1 GAL.	X	6' O.C. SPACING
'PUTAH CREEK'						
TIARELLA CORDIFOLIA	FOAM FLOWER		M	1 GAL.	X	2' O.C. SPACING
WESTRINGIA F. 'MUNDI'	WESTRINGIA		L	1 GAL.	X	4' O.C. SPACING



GRAPHIC SCALE

(IN FEET)
1 INCH = 10 FT

DATE: 09/02/2021
SHEET NUMBER: L-1 OF 1
PROJECT NUMBER: 21-059.01