

LMC Emblem Santa Rosa

Design Review

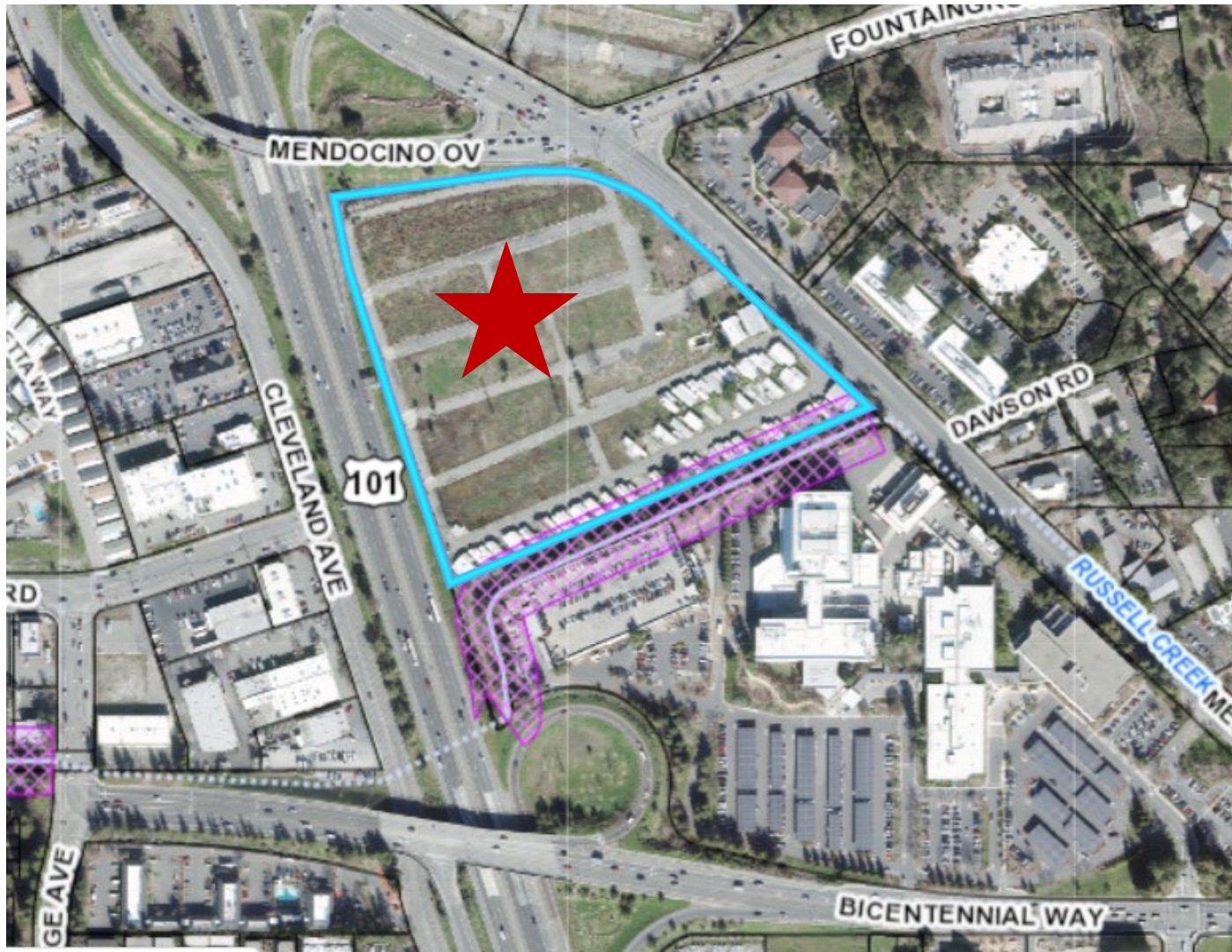
3575 Mendocino Ave

January 19, 2023

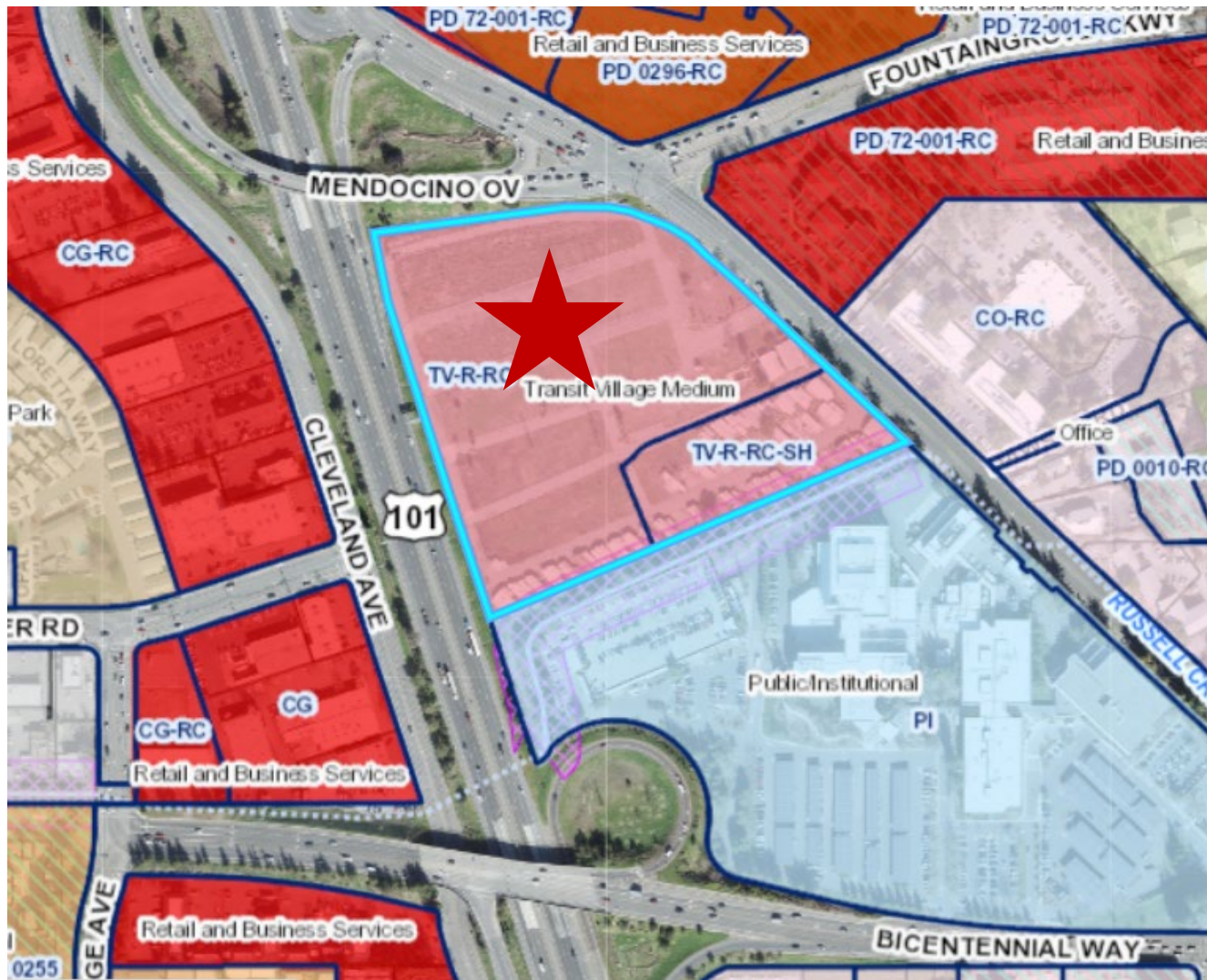
Kristinae Toomians
Senior Planner
Planning and Economic Development

Project Location

3575 Mendocino Ave



General Plan and Zoning



Discretionary Entitlement Requirements

- Multifamily
- (260 units)
- Sebastopol Road Corridor PDA
- Neighborhood Meeting
- Concept Design Review
- Minor Design Review





Main entry to the community from Mendocino Avenue



Secondary entry to the community from Mendocino Avenue & Sculptural Park



Kristinae Toomians
Senior Planner
Planning and Economic Development
KToomians@srcity.org
(707) 543-4692

