

City-Wide Integrated Pest Management Policy

City Council
March 5, 2024

Outline

- Goal of IPM
- Existing Guidance
- Impacts of product bans on operations
- Typical IPM
- Staff Recommendations
- Next Steps

Definitions

- Pesticide: Chemical used to eradicate pests, includes herbicides, insecticides, fungicides, rodenticides, etc.
- Glyphosate: Active ingredient in Roundup recognized as an effective herbicide. The various trade names used for Glyphosate are based on the types of applications that they are approved for e.g., "Rodeo" is Glyphosate mixed with other chemicals for use in aquatic environments (less toxic to amphibians)
- Neonicotinoids: Broad spectrum group of pesticides that kill more than the intended species. Has been shown to have dramatic effect on bee populations

Reasons to decrease pesticide use

- Pesticides and fertilizers were used to help launch the Green Revolution. Increasing crop yields and preventing hundreds of millions of people from starving
- Pesticide use began to have significant environmental impacts as they were over-used, killed non-target species, and were linked to human health impacts

Concerns with Glyphosate

- Persists in the environment for days or months
- Widely used in agriculture and landscape maintenance
- Listed as a probable carcinogen by the International Agency for Research on Cancer
- Lawsuits have filed and won against the chemical manufacturer
- Health risks are most acute to pesticide applicator

Integrated Pest Management

- Goal is to develop a City-Wide Integrated Pest Management (IPM) Policy
- This policy will provide guidance to staff and contractors working for the City to ensure landscapes are designed and maintained in a manner that reduces the need for fossil fuel powered equipment, herbicides, insecticides, and other anthropomorphic inputs that have an ability to exacerbate climate change
- Ensure policy supports the City's ability to protect against increased fire severity due to invasive species and climate change

Typical IPM Policy

- Pest identification
- Research least toxic methods to address impacts to pests
- If action needed, apply least toxic methods first then evaluate
- If further action needed, apply next least toxic method



Start with non-pesticide actions first

- Planting spaces with dense plantings
- Mechanical removal where possible
- Avoid problematic species where possible
- Use pesticides as a last resort and following a least-toxic approach first

Pest Management Solutions - Insects

- Tolerate
- Identify disease
- Mechanical removal of diseased parts (Spidermites)
- Spray with appropriate pesticide
- Replace with pest resistant species (except: Luther Burbank Gardens)



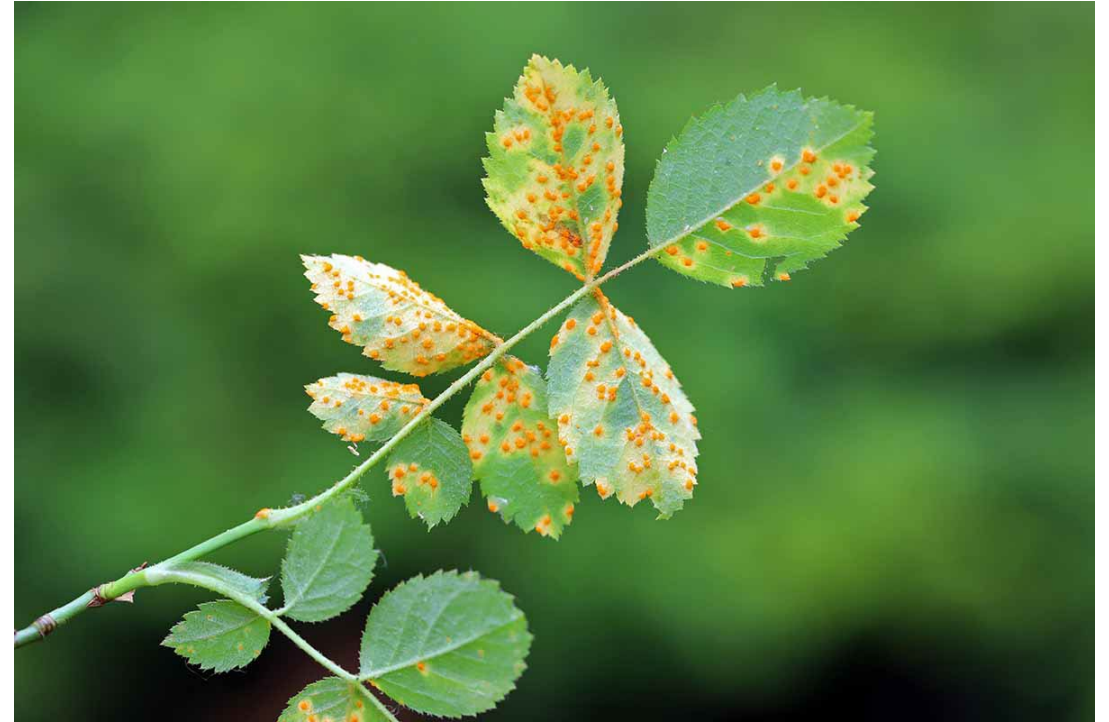
Pest Management Solutions – Weeds

- Tolerate
- High density plantings
- Mulch 3” deep apply annually
- Mechanical removal
- Grazing
- Herbicides



Pest Management Solutions – Plant Diseases

- Tolerate
- Identify disease
- Mechanical removal of diseased parts (Fireblight)
- Spray with appropriate pesticide (Copper sulphate, Sulfur, or other)
- Replace with pest resistant species (except: Luther Burbank Gardens)



Draft Policy on Pesticide Bans

- Complete ban of neonicotinoids
- Minimize the use of all pesticides throughout the City using IPM policy
- Require staff to have Certified Pesticide Applicator to apply or supervise
- When spraying any pesticide staff will use goggles, chemical resistant clothing (Tyvek suit), chemical resistant gloves, and rubber boots

Draft Policy on Pesticide Bans

- Ban Glyphosate use in most-sensitive areas:
 - Playgrounds
 - Public gathering spaces
 - Picnic areas
 - Other areas with identified sensitive receptors
- Include specific exceptions

Exceptions to Glyphosate Ban

- Allow use in cases of public health and safety
- Allow use on road medians and parking structures
- Allow on ball fields that are closed for renovations, not active fields
- Allow use on invasive plants (non-routine activities)
- Once objectives are achieved, decrease use or eliminate completely

Pesticide-Use Transparency

- Create website to highlight activities to prevent pesticide use
 - IPM Policy
 - Tips for managing pests without pesticides
 - Annual report of pesticide use on city properties
- All pesticide applications will be posted prior to listed date of application
- When planning to apply pesticides, close area to the public and post signs about pesticide application

Recommendation

It is recommended by Santa Rosa Water and the Recreation and Parks Department, that the Council of the City of Santa Rosa, by resolution, adopt the City-Wide Integrated Pest Management Policy.

Questions/Discussion