

# Kelly Farm California Tiger Salamander Mitigation Bank Update



Sean McNeil, Deputy Director Environmental Services  
July 18, 2024

# Today's Presentation

- **Project Overview**
- **Current Status**
- **Easement Contract**
- **Next Steps**



# Project Overview

- Develop ~100 acre CA tiger salamander (CTS) and wetland mitigation bank.
- CTS on site.
- Leased for hay production.
- Bank would cease irrigation and enhance and expand CTS and wetland habitat.



# Estimated Cost of Establishing 100 Acre Bank

- |   |                    |
|---|--------------------|
| • Studies, fees, permitting, and design | \$650,000          |
| • Construction                          | \$5,000,000        |
| • Interim monitoring and management     | \$250,000          |
| • Endowment                             | <u>\$2,000,000</u> |
| • Total                                 | \$7,900,000        |
- 
- Current Cost to buy 100 acres of CTS credit - \$20,000,000
  - Potential Savings if bank developed (100 ac) - \$12,100,000

# Current Status

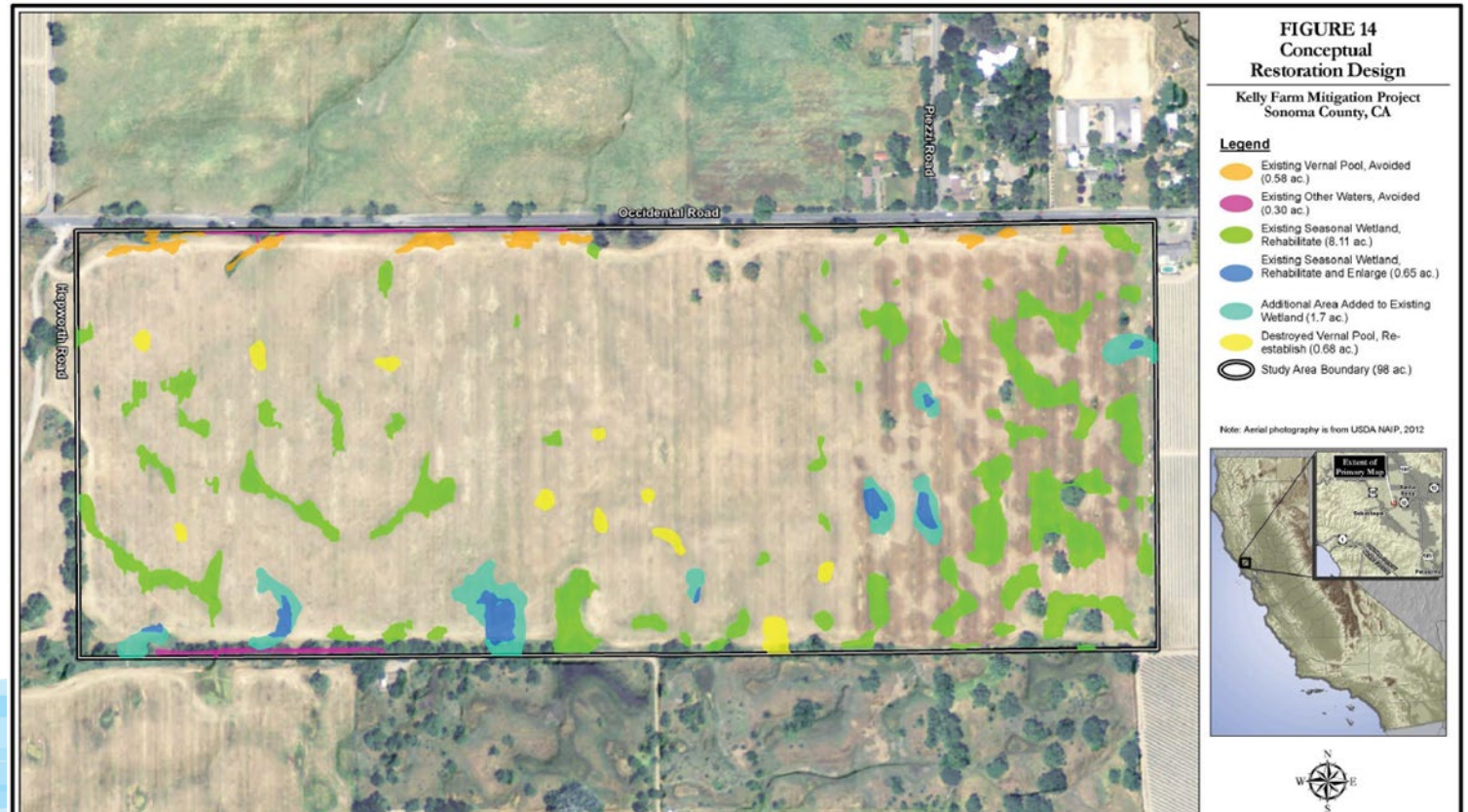
- Biological surveys completed.
- Bank Prospectus (Plan) accepted by resources agencies.
- Draft Construction Plan (90%).
- Conservation Easement and Endowment for Easement Services



## KELLY FARM MITIGATION BANK

City of Santa Rosa  
Sonoma County, California

### *PROSPECTUS*



# The RFP Process for Easement Holder

- Advertised on January 2, 2024.
- Two proposals received January 30, 2024.
- Review panel – Deputy Director Environmental Services, Associate Civil Engineer, Sr. Environmental Specialist.
- Evaluation criteria – Responsiveness to RFP, work plan, qualifications, ability to perform work, experience, & technical ability.
- Staff unanimously selected Center for Natural Lands Management due to greater experience with conservation easement management and a higher quality proposal.

# Easement Holder Contract Revision

- Brought proposed contract with Center for Natural Lands Management (CNLM) to Contract Review Subcommittee May 1, 2024.
- Contract included easement creation and endowment placeholder of \$251,975.
- Endowment funds removed from contract because we need to evaluate the bank needs for long-term management before setting the endowment.
- This reduced the current contract amount to \$39,683.56.

# Next Steps

- CNLM to work with Water to develop conservation easement
- CNLM to submit draft easement to California Dept. of Fish and Wildlife to get authorization to hold easement
- If approved, Water will fund easement and a contract amendment will be brought to BPU for consideration and final decision
- Water will work with Open Space District to subordinate Open Space Conservation Easement to the new Conservation Easement for the Mitigation Bank
- Finalize construction plans and bid project



# Questions?