



# TREES - EXISTING CODES, POLICIES AND PROCEDURES

CLIMATE ACTION SUBCOMMITTEE FEBRUARY 5, 2025

PRESENTATION BY:

- JESSICA JONES, DEPUTY DIRECTOR PLANNING - PED
- CLEVE GURNEY, DEPUTY DIRECTOR ENGINEERING DEVELOPMENT SERVICES - PED
- JEN SANTOS, PARKS DEPUTY DIRECTOR - RECREATION & PARKS DEPARTMENT

# MUNICIPAL CODE CHAPTER 17-24: TREES

- Adopted in 1990
- Purpose:
  - ✓ Trees contribute greatly to the health, safety and general welfare of all of the City's citizens and preservation and proper maintenance is a matter of Citywide concern.
  - ✓ It is necessary to enact regulations prohibiting unnecessary damage, removal, or destruction of trees.
  - ✓ The regulations are intended to protect certain trees that are an essential part of the City's natural heritage (heritage trees) while recognizing property owner's right to utilize their land.

# PERMIT REQUIRED

- Category I – No Proposed Development
  - A Tree Removal Permit is required for any proposed alteration, removal, or relocation of any tree or a heritage tree.
  - The number, location, condition and reason for removal must be provided, arborist report may be required.
- Category II – Part of a Proposed Development
  - All development proposals must indicate trees proposed for alteration, removal or relocation, and those to be protected – proposed removal is included as part of the project permits.
  - Must include the genus, drip line and trunk circumference of all trees, and reasons for any removal.

# PERMIT REQUIRED

## ■ Exemptions

- Trees in single-family residential areas, except protected or heritage trees, or those tree species listed as exempt.
- Trimming or clearing of branches/roots from interfering with public utilities and right-of-way when necessary for maintenance or lines of sight, or as necessitated by a hazardous or dangerous condition.
- Removal or alteration of any tree necessitated by a hazardous or dangerous condition which requires immediate action to protect life or property. Street, protected or heritage trees meeting this criteria may be removed without a permit when written permission is provided by the City Manager or the head of the following City departments:
  - Police
  - Fire
  - Public Works
  - Planning and Economic Development
  - Water
  - Recreation and Parks
- Code identifies certain species that may be removed without a permit.

# MITIGATION AND PROTECTION

- Mitigation Requirements:
  - For each 6 inches or diameter – approved for removal – 2 trees (minimum 15-gallon), shall be planted on site.
  - For each 6 inches or diameter – not approved for removal – 4 trees (minimum 15-gallon), shall be planted on site.
  - If the site is inadequate in size to accommodate the replacement trees, an in-lieu payment of \$100.00 per 15-gallon replacement tree may be provided (to be used for City tree-related educational projects and/or planting programs).
- Tree protection requirements:
  - Before the start of any clearing, excavation, construction or other work, protected trees shall be fenced off at the perimeter.
  - If the proposed development or any site work will encroach upon the perimeter special measures shall be utilized to allow the roots to obtain oxygen, water, and nutrients as needed.
  - No substances that may be harmful to trees shall be stored or dumped within the perimeter.
  - Underground trenching for utilities shall avoid major support and absorbing tree roots, and no concrete, asphalt paving or compaction of soil shall be placed over the root zones.

# DRAFT GREENHOUSE GAS REDUCTION STRATEGIES

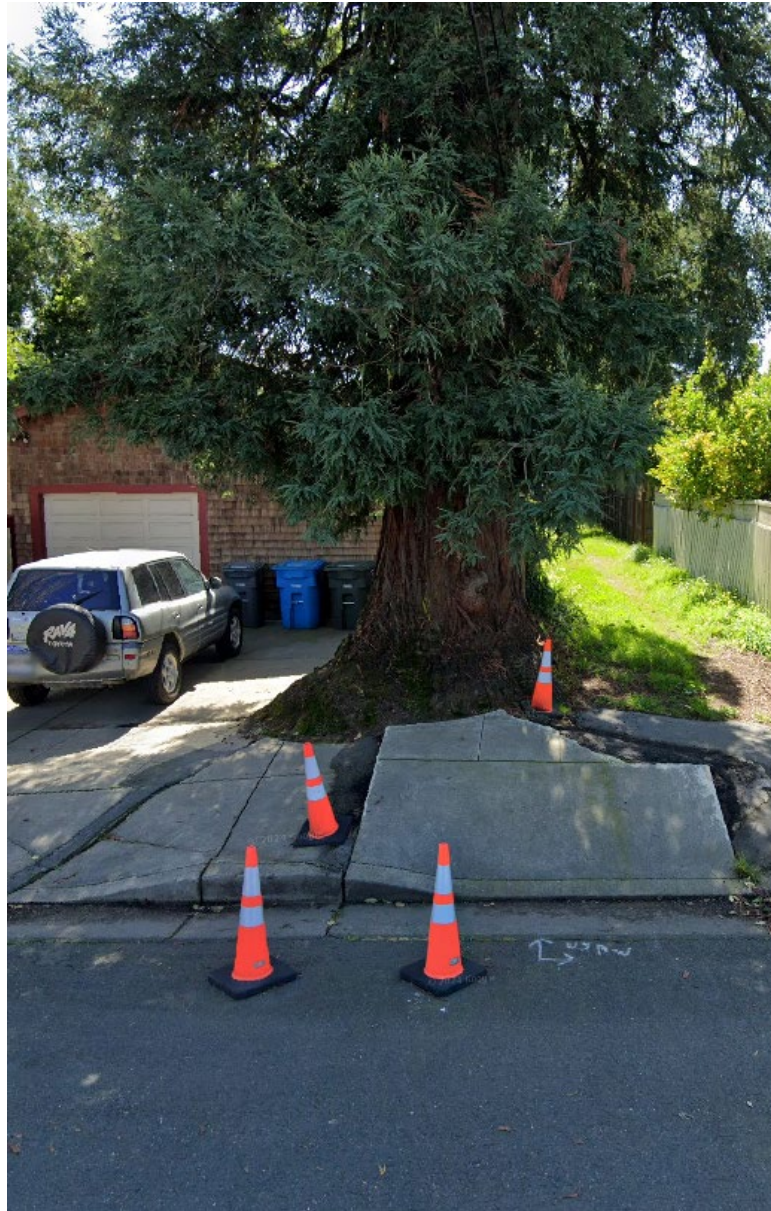
- Expand tree planting, maintain heritage trees, and replant street trees, when they are removed for safety or health reasons, and continue to maintain Santa Rosa's Tree City USA designation.
- Seek resources to conduct a community-wide tree canopy assessment and increase the city's urban tree canopy (Action 5-6.16)
- Work with the Water Team and Master Gardeners to refine guidelines on specific tree species and management procedures that integrate carbon sequestration, ecosystems services, and biodiversity. (Action 5-6.18)
- Where woody vegetation is appropriate, maximize planting of coast live oak and other native trees and shrubs in the public realm. (Action 5-6.19)
- Work to complement the street tree network by increasing the number of street trees in the sidewalk and tree wells. (Action 5-6.20)
- Preserve mature trees during infrastructure modifications using solutions to retain them such as bulb-outs, basin expansion, and sidewalk re-routing. (Action 5-6.21)
- Require tree planting and other landscaping in all new development and redevelopment that supports other community benefits, such as shade for walking and biking, and include greening elements as a primary project scoring criteria for bicycle improvements. (Action 5-6.22)

# STREET TREE - RESPONSIBILITIES

- City Code 17-24.020 - any tree having a single trunk circumference greater than six and one-quarter inches or a diameter greater than two inches, a height of more than six feet, and **one half or more of its trunk is within a public right-of-way or within five feet of the paved portion of a City street or a public sidewalk**
- Responsibility of the property owner or developer
  - Maintain in such a condition that will not endanger - [CA Law SHC Div 7 Ch 22](#)
  - Trimming trees and hedges abutting sidewalks - [City Code 17-24.085](#)
  - Not interfere w/ use of streets and sidewalk. Liability on property owner - [City Code 13-32.010](#)
- Developments are conditioned:
  - To plant or replace street trees – direction comes from Parks Dept.
  - To constructs planter strips or tree wells per the City's Street Design and Construction Standards

# STREET TREES - IMPACTS

- DRAINAGE
- ADA COMPLIANCE
- PAVEMENT FAILURE





# STREET TREES – SOLUTIONS

- GRIND ROOTS
- WIDEN TREE WELL
- BOW CURB OUT
- MEANDER SIDEWALK



## RECREATION AND PARKS DEPARTMENT RESPONSIBILITIES WITH TREES

### Four main areas of responsibilities:

- Plan Review including pre-application
- Street Trees
- Emergent trees in the Right-of-Way
- Maintenance and Tree planting



## RECREATION AND PARKS DEPARTMENT RESPONSIBILITIES WITH TREES

### Plan Review including pre-application

- Residential, non-residential and City projects per City's Design and Construction Standards, and City Code Chapter 17-24 and 13-32.010
- Ensure street tree requirement is included – access to street tree list
- Assist with the review of existing trees for Heritage status
- Information regarding future maintenance responsibility of trees

## RECREATION AND PARKS DEPARTMENT RESPONSIBILITIES WITH TREES

### Street Trees

- City Code 13-32.010
- Street Tree definition
- Street Tree Removal permits
  - Per site evaluation of each tree
  - Approval/Denial process
- Referral to Code Enforcement as needed



## RECREATION AND PARKS DEPARTMENT RESPONSIBILITIES WITH TREES

### Emergent trees in the Right-of-Way

- Any tree debris blocking public Right of Way
- Parks Maintenance staff respond 24/7, 365 days per year
- Arborist contract service available



# RECREATION AND PARKS DEPARTMENT RESPONSIBILITIES WITH TREES

## Maintenance and Tree Planting

- City tree definitions
- Annual maintenance for tree types
- Park A Month program – tree planting
- Irrigation for Trees
- Tree replacement
- Tree City USA designation

