

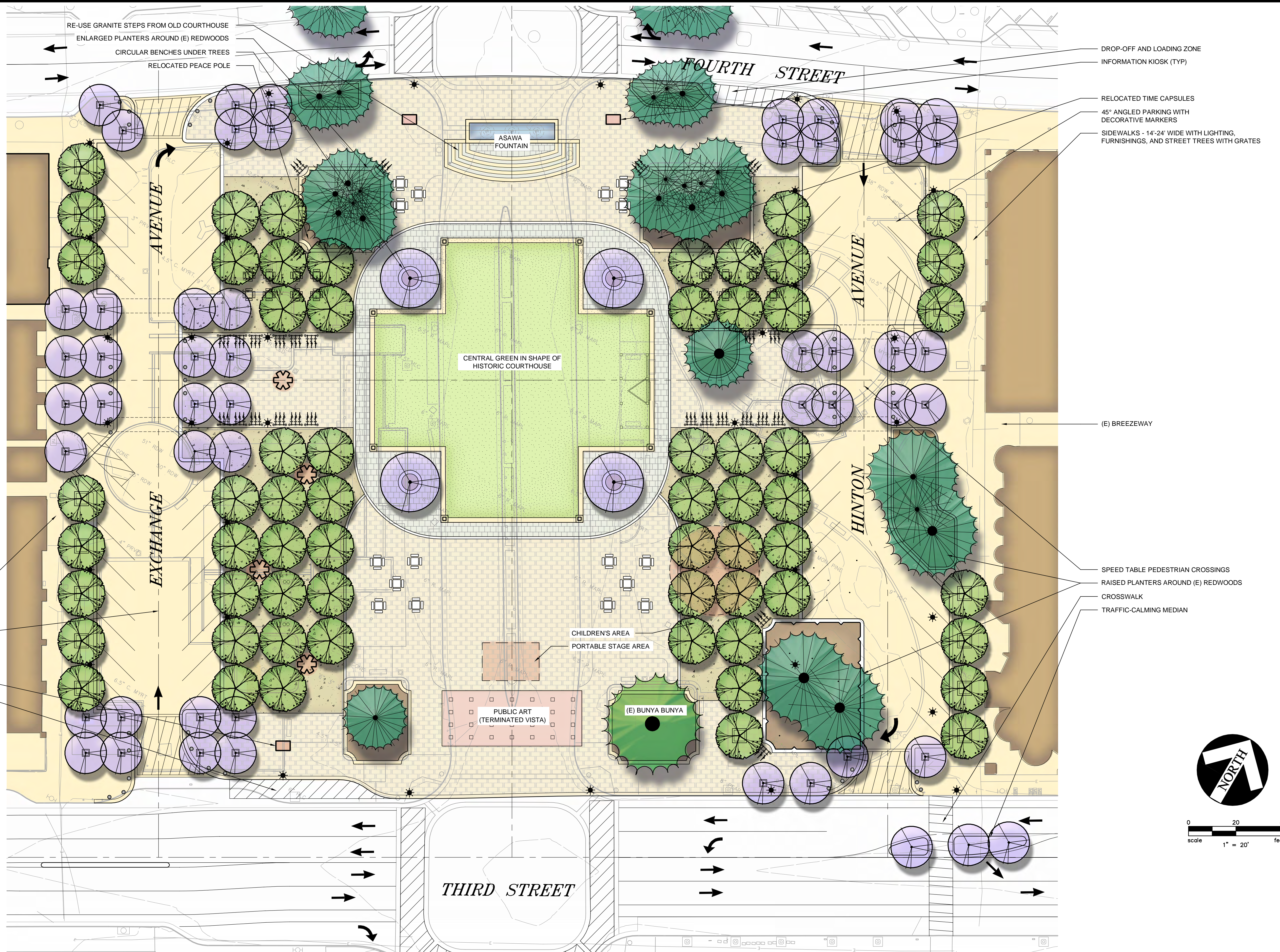
LEGEND

- SIDEWALKS, STREETS, & FLEX-ZONE PARKING: COLORED CONCRETE
- PLAZA PAVING: PERMEABLE PAVERS
- TREE BOSQUE AREAS: DECOMPOSED GRANITE OR CRUSHED, RECYCLED CONCRETE
- SQUARE PAVING: NATURAL STONE OR CAST PAVERS
- MULCH PLANTER AROUND (E) TREES
- REINFORCED TURF
- ROADWAY PAVING (3RD AND 4TH)
- (E) TREES TO REMAIN (REDWOODS UNLESS OTHERWISE NOTED)
- FLOWERING ACCENT TREES
- DECIDUOUS PLAZA SHADE TREES
- POLE-MOUNTED STREET & AREA LIGHTS
- BOLLARDS
- MOVABLE FURNITURE
- POTENTIAL LOCATIONS FOR ARTWORKS: INTERACTIVE, TEMPORARY, OR PERMANENT
- BIKE PARKING
- FIXED BENCHES
- TREE GRATES
- COLOR-CHANGING L.E.D. LIGHTS

± 20' WIDE SIDEWALK WITH LIGHTING, FURNISHINGS, AND STREET TREES
EXCHANGE AND HINTON AVENUE TO HAVE COLORED & SCORED CONCRETE PAVING WITH PARKING DELINEATED BY DECORATIVE MARKERS
INFORMATION KIOSK
DROP-OFF AND LOADING ZONE

NOTE

THE MASTER PLAN IS INTENDED TO CONVEY THE GENERAL ARRANGEMENTS, CHARACTER, & FEATURES OF THE SQUARE. EXACT LOCATIONS, LAYOUT, QUANTITIES, & MATERIALS FOR SPECIFIC FEATURES ARE SUBJECT TO REFINEMENT, MODIFICATION, & REARRANGEMENT.



OLD COURTHOUSE SQUARE Reunification Plan

EXHIBIT A - OPTION 2

SANTA ROSA, CA

PRELIMINARY MASTER PLAN - OPTION 2

JANUARY 21, 2016