

LEGEND

- SIDEWALKS, STREETS, & FLEX-ZONE PARKING:
COLORED CONCRETE
- PLAZA PAVING:
PERMEABLE PAVERS
- TREE BOSQUE AREAS:
DECOMPOSED GRANITE OR
CRUSHED, RECYCLED CONCRETE
- SQUARE PAVING:
NATURAL STONE OR CAST PAVERS
- MULCH PLANTER
AROUND (E) TREES
- REINFORCED TURF
- ROADWAY PAVING (3RD AND 4TH)
- (E) TREES TO REMAIN
(REDWOODS UNLESS OTHERWISE NOTED)
- FLOWERING ACCENT TREES
- DECIDUOUS PLAZA SHADE TREES
- POLE-MOUNTED STREET & AREA LIGHTS
- BOLLARDS
- MOVABLE FURNITURE
- POTENTIAL LOCATIONS FOR ARTWORKS:
INTERACTIVE, TEMPORARY, OR PERMANENT
- BIKE PARKING
- FIXED BENCHES
- TREE GRATES
- COLOR-CHANGING L.E.D. LIGHTS

± 20' WIDE SIDEWALK WITH LIGHTING,
FURNISHINGS, AND STREET TREES

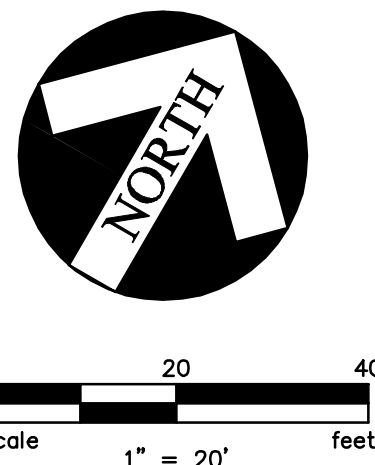
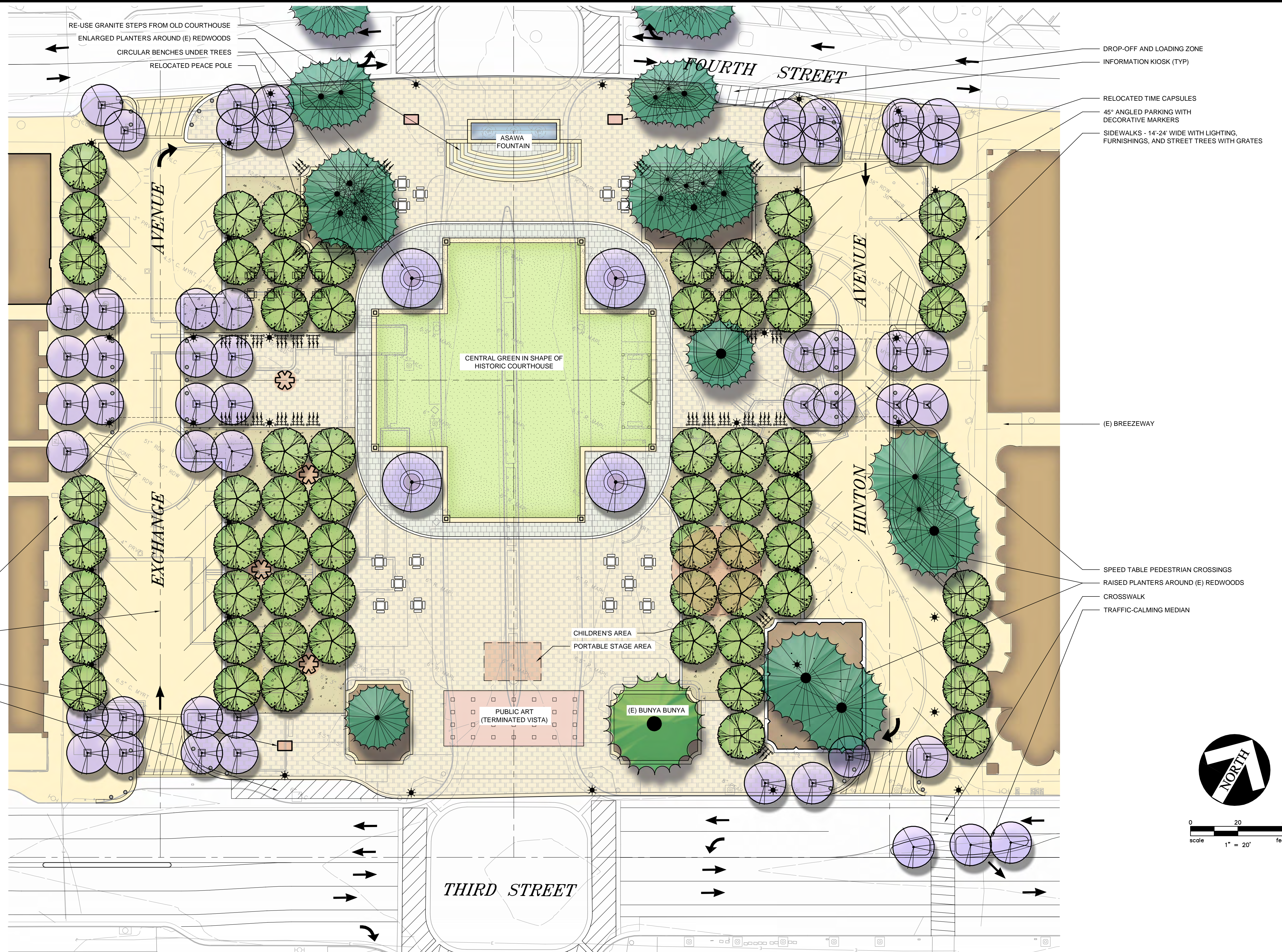
EXCHANGE AND HINTON AVENUE TO HAVE
COLORED & SCORED CONCRETE PAVING
WITH PARKING DELINEATED
BY DECORATIVE MARKERS

INFORMATION KIOSK

DROP-OFF AND LOADING ZONE

NOTE

THE MASTER PLAN IS INTENDED TO CONVEY THE GENERAL
ARRANGEMENTS, CHARACTER, & FEATURES OF THE SQUARE.
EXACT LOCATIONS, LAYOUT, QUANTITIES, & MATERIALS FOR
SPECIFIC FEATURES ARE SUBJECT TO REFINEMENT,
MODIFICATION, & REARRANGEMENT.



OLD COURTHOUSE SQUARE

Reunification Plan

ATTACHMENT
3

SANTA ROSA, CA

PRELIMINARY MASTER PLAN - OPTION 2

JANUARY 21, 2016

CARLILE • MACY

