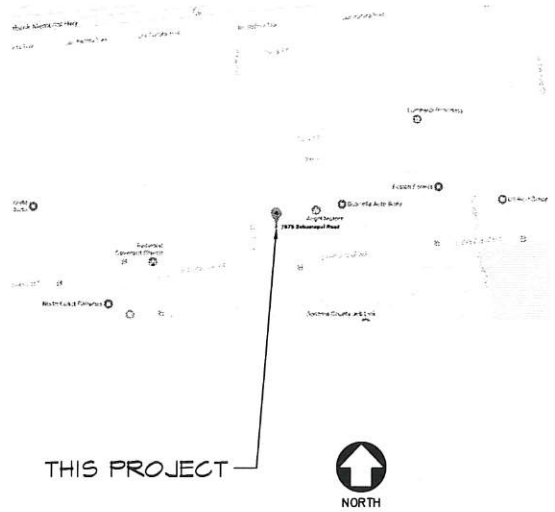


VICINITY MAP



# EMERALD ALLIANCE CULTIVATION

2875 SEBASTOPOL ROAD, SANTA ROSA

SHEET INDEX

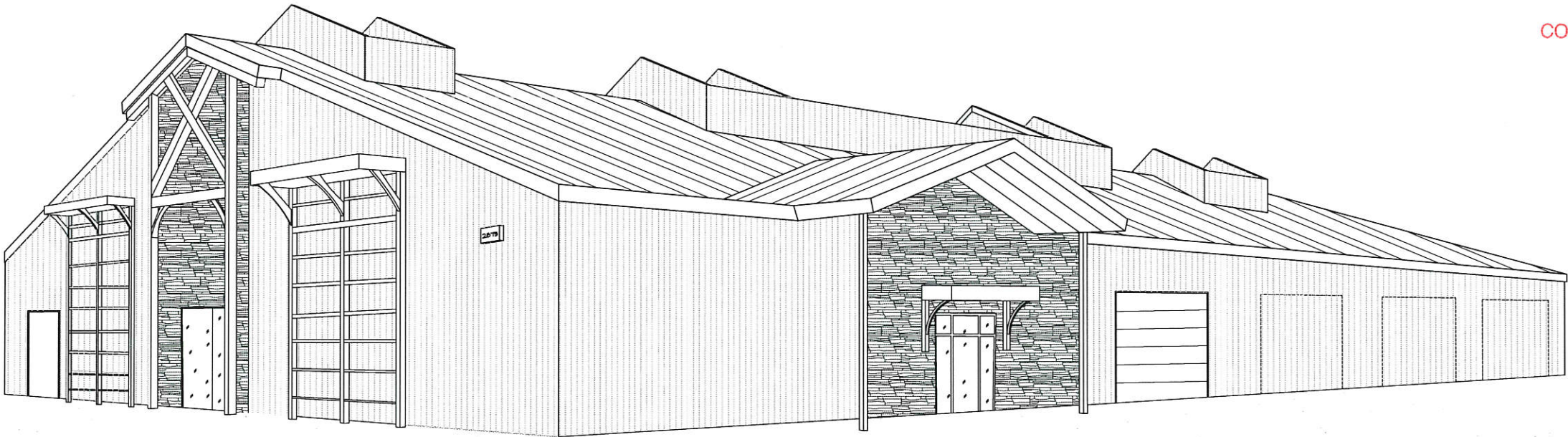
SCHEDULE OF DRAWINGS

ARCHITECTURAL DRAWINGS (AVILA-BUNCH ARCHITECTS, INC.)	
A0.1	COVER SHEET, PROJECT INFORMATION
A1	ARCHITECTURAL SITE PLAN
A2	UPPER & LOWER FLOOR PLAN
A3	ELEVATIONS & ROOF PLAN
CIVIL DRAWINGS (NORTH COAST ENGINEERING)	
C1	CIVIL SITE PLAN

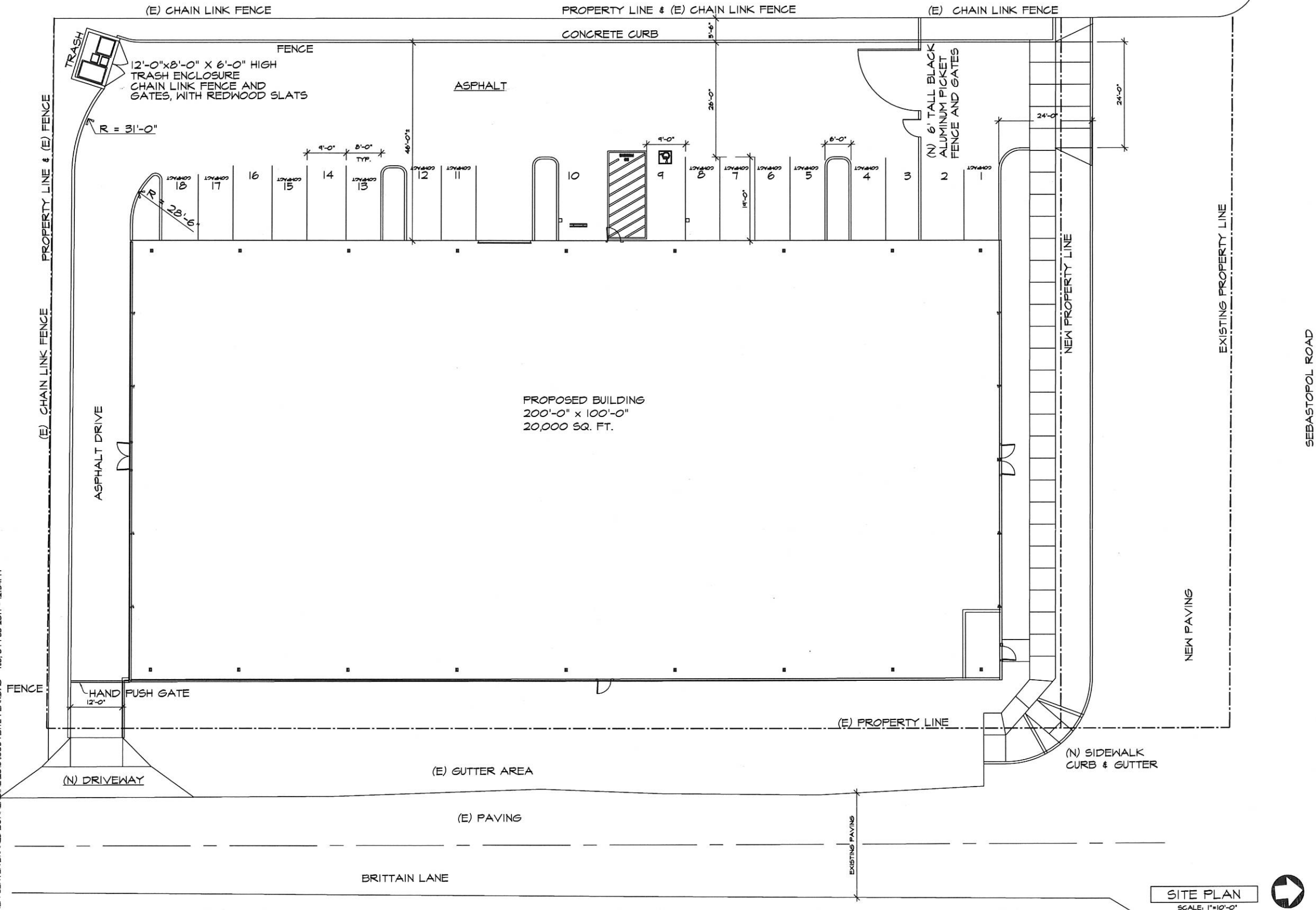
PROJECT PARTICIPANTS

<b>OWNER</b> EMERALD ALLIANCE GROUP 77 ESTELLE AVE, LARKSPUR, CA 94939 CONTACT: KAREN KISSLER 415/ 250-8888	<b>ARCHITECT</b> AVILA-BUNCH ARCHITECTS, INC. 5850 COMMERCE BLVD., SUITE 100 ROHNERT PARK, CA, 94428 (707) 585-5711, F: (707) 585-2499 CONTACT: MERLE AVILA
<b>STRUCTURAL ENGINEER</b> THR ENGINEERING 421 RED TAIL ROAD HEALDSBURG, CA 95448 CONTACT: TED ROSANTSSON 707/	<b>GEOTECHNICAL ENGINEER</b> REESE & ASSOCIATES 154 LYSTRA COURT SANTA ROSA, CA 95405 CONTACT: JOSEPH M. MAUNEY 707/ 528-5018
<b>LANDSCAPE ARCHITECT</b> BALCERAK DESIGN 608 BEAVER STREET SANTA ROSA, CA 95404 (707) 575-8254 CONTACT: GARY BALCERAK	<b>CIVIL ENGINEERING</b> NORTH COAST ENGINEERING 2655 KNOLLS DRIVE SANTA ROSA, CA 95405 (707) 564-8821 PHONE/FAX (707) 455-1094 CELL NC_ENGINEERING@SBCGLOBAL.NET CONTACT: MATTHEW DAMOS

CITY OF SANTA ROSA  
Santa Rosa, CA  
FEB 09 2017  
COMMUNITY DEVELOPMENT  
DEPARTMENT



\\AVILA-SERVER\SHARED\COMMERCIAL\2016\16069\16069 SITE PLANNING Thu, 07 Feb 2017 - 12:34PM



SITE PLAN  
SCALE: 1"=10'-0"



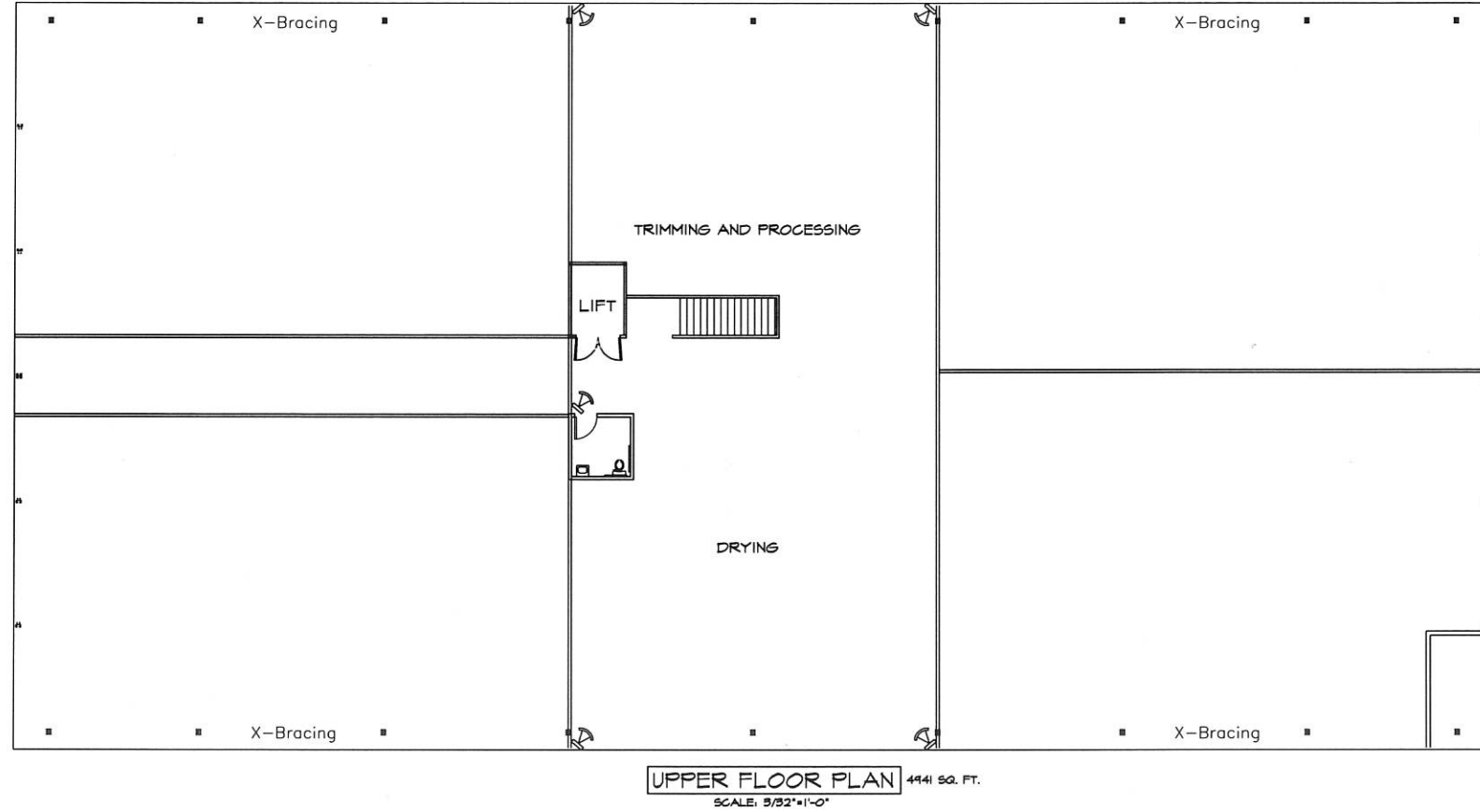
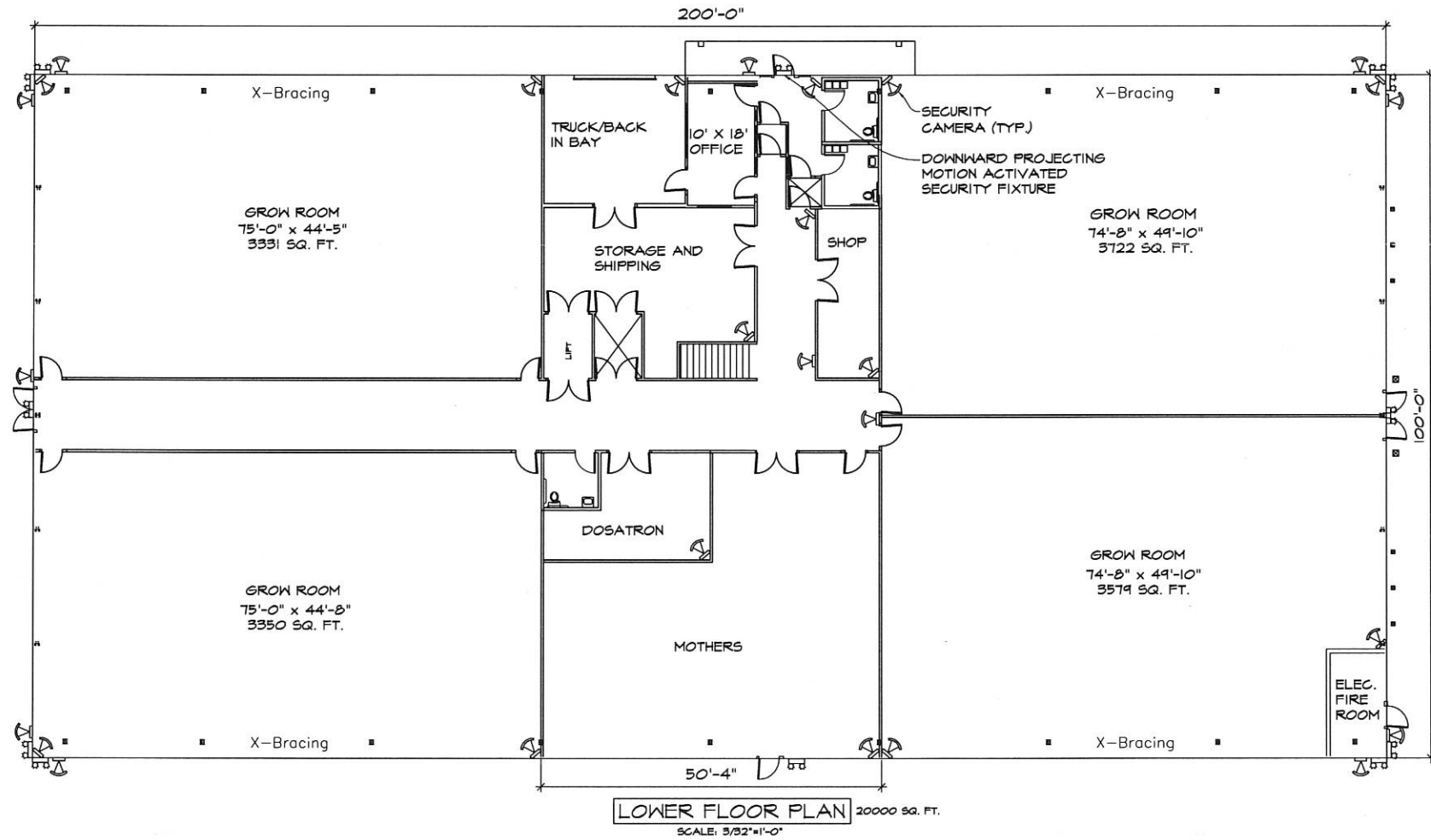
SHEET NO:	JOB NO:	DESIGN FOR:	CONTRACTOR	NOTES		DATE
				DATE PRINTED	DATE CHECKED	
A1	16069	EMERALD ALLIANCE CULTIVATION 2575 SEBASTOPOL ROAD, SANTA ROSA				2.017

avila-bunch architects, inc.

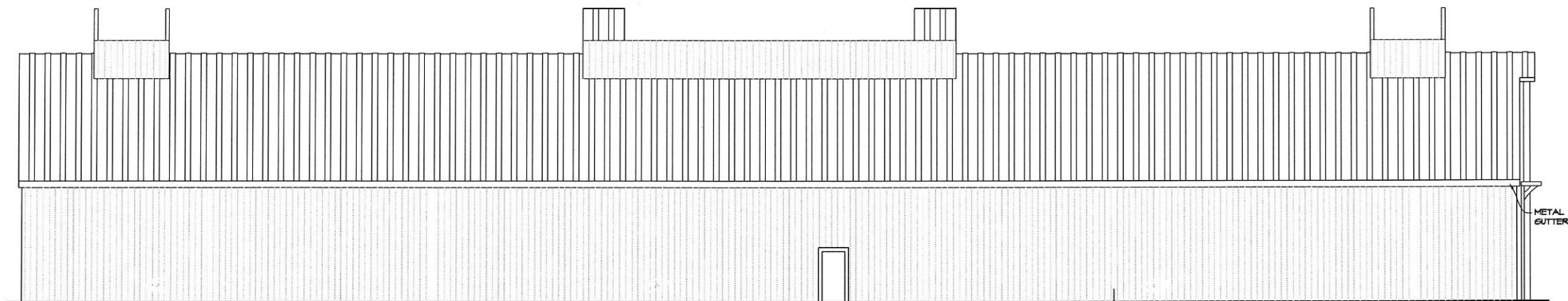
(707) 585-3711  
(707) 795-4511  
FAX 585-2499

Merle Avila - architect  
Russell W. Bunch - architect  
5850 Commerce Boulevard, Rohnert Park, California 94928

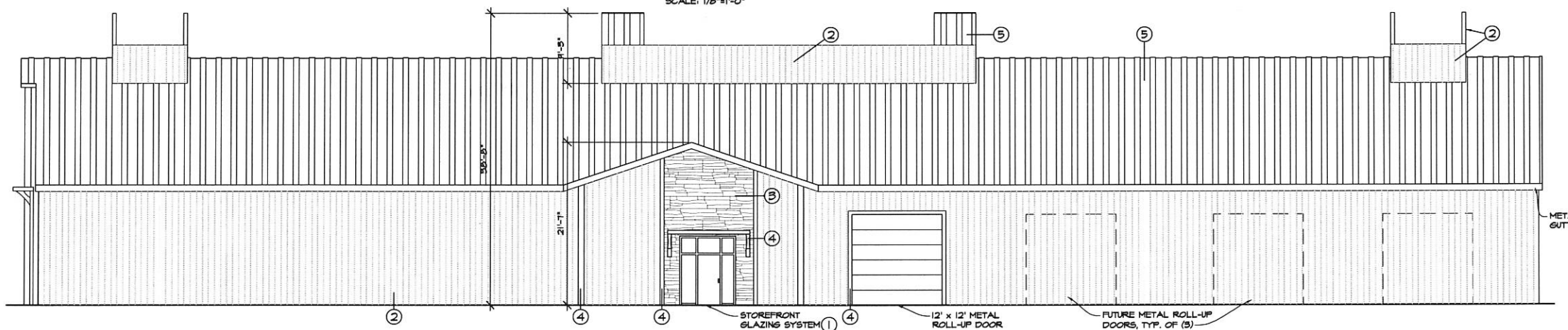
\\AVILA-SERVER\SHARED\COMERCIAL\2016\1606\FLOOR PLANS - FH\_06 Jan 2017 - 8:27AM



\\AVILA-SERVER\SHARED\COMMERCIAL\2016\16069\WAREHOUSE-ALL.DWG Mon, 30 Jun 2017 - 11:52AM

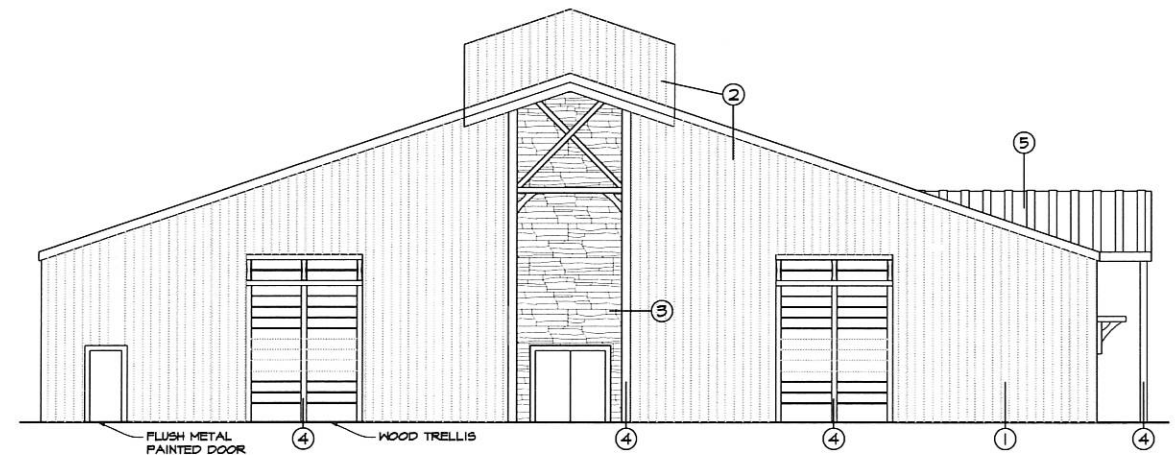


EAST ELEVATION  
SCALE: 1/8"=1'-0"

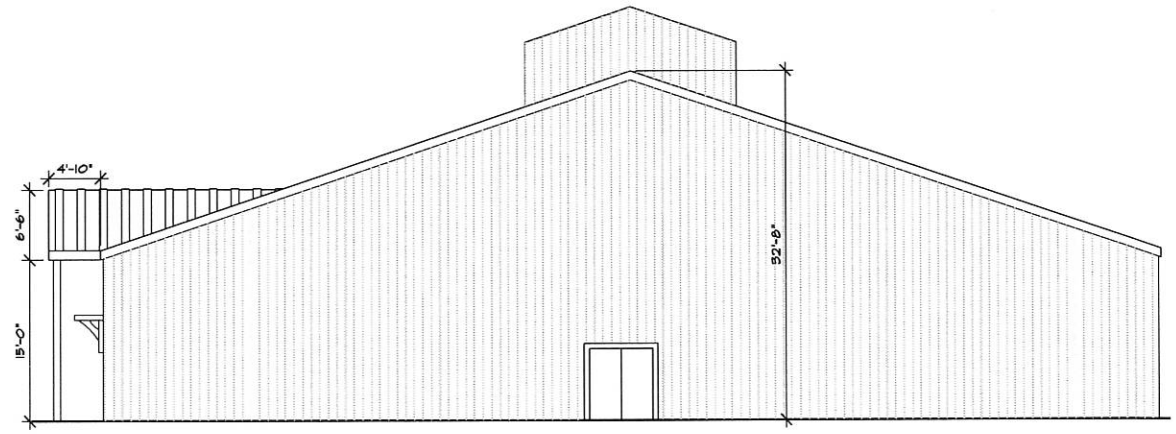


WEST ELEVATION  
SCALE: 1/8"=1'-0"

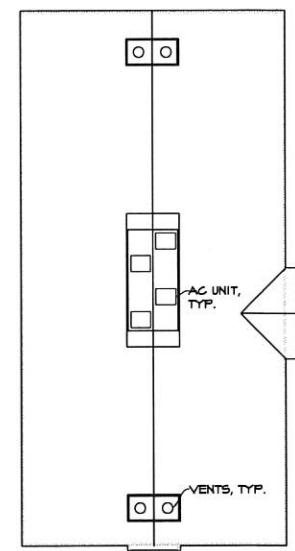
- EXISTING BUILDING MATERIALS**
1. ALUMINUM STOREFRONT FRAMING SYSTEM, BLACK ANODIZED FINISH WITH CLEAR GLAZING
  2. HIDDEN FASTENER, CORRUGATED METAL WALL PANELS, DARK GREEN
  3. TERRAZZO, LOST COAST REDWOOD SIDING-WEATHERED
  4. STAINED WOOD TIMBER FRAME ACCENT
  5. HIDDEN FASTENER, CORRUGATED METAL ROOF PANELS, TAN



NORTH ELEVATION  
SCALE: 1/8"=1'-0"



SOUTH ELEVATION  
SCALE: 1/8"=1'-0"



ROOF PLAN  
SCALE: 1/16"=1'-0"





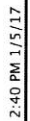
## PLANTING PLAN

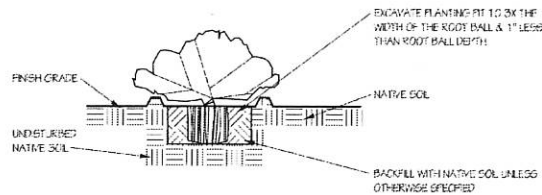
**EMERALD ALLIANCE  
GROWING FACILITY  
2875 SEBASTOPOL ROAD  
SANTA ROSA, CALIFORNIA**

[illegible]

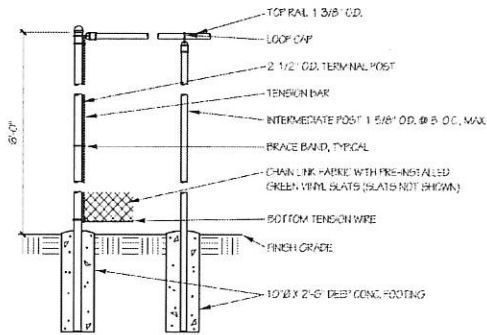
Date: 1/5/17  
Scale: 1" = 10'-0"  
Drawn: GFB  
Job: 1609  
Sheet

L-1  
Sheets

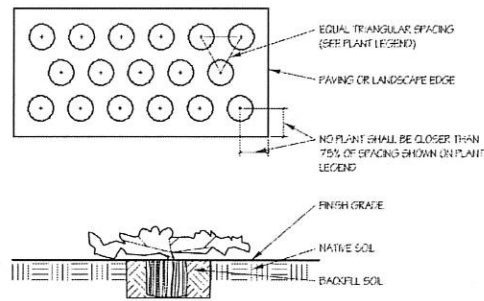




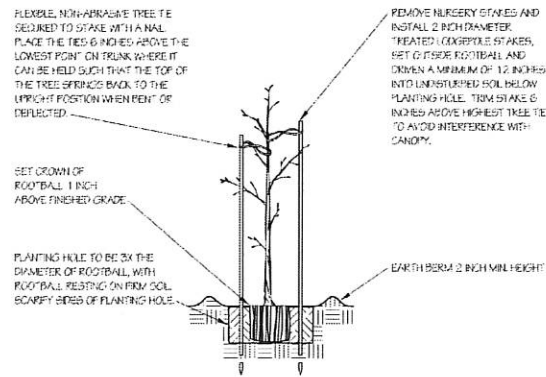
SHRUB PLANTING DETAIL



CHAIN LINK FENCE DETAIL

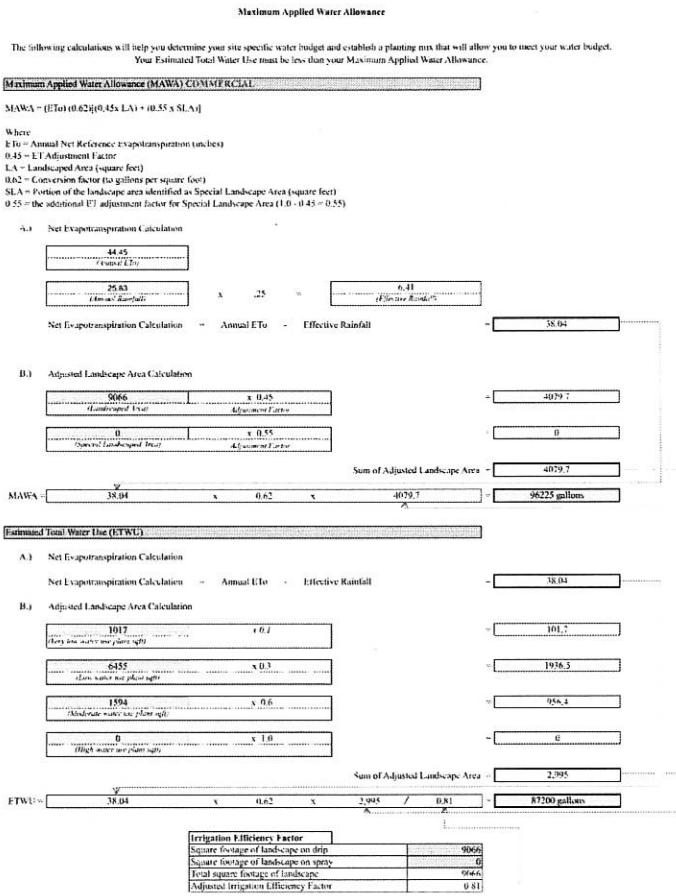


GROUNDCOVER DETAIL



TREE PLANTING DETAIL

PLANTING LEGEND				
KEY	SIZE	BOTANICAL NAME	COMMON NAME	REMARKS
TREES				
PHC	#15	PLATANUS X HISPANICA 'COLUMBIA'	LONDON PLANE TREE	MEDIUM
QAG	#15	QUERCUS AGRIFOLIA	COAST LIVE OAK	VERY LOW
RLA	#15	SEARSIA LANCEA	AFRICAN SUMAC	LOW
SHRUBS				
AHM	#5	ARCTOSTAPHYLOS DENSIFLORA 'HOWARD MCMINN'	MANZANITA	LOW
CHD	#5	CEANOTHUS GRISEUS 'HEARTS DESIRE'	WILD LILAC	LOW
FKF	#5	FORSYTHIA X INTERMEDIA 'KOLGOLD'	GOLD FORSYTHIA	LOW
FEC	#5	FRANGULA CALIFORNICA 'EYE CASE'	COFFEEBERRY	LOW
PTV	#5	PITTOSPORUM TOBIRA 'VARIEGATA'	VARIEGATED TOBIRA	LOW
XCC	#5	XYLOSMA CONGESTUM 'COMPACTA'	COMPACT XYLOSMA	LOW
PERENNIALS				
MRI	#1	MUHLBERGIA RIGENS	DEER GRASS	LOW
GROUNDCOVERS				
CLF	#1	COTONEASTER DAMMERI 'LOWFAST'	COTONEASTER	6\" O.C. TRI. SPACING
JPA	#1	JUNOJA PATENS	CALIFORNIA RUSH	2\" O.C. TRI. SPACING
LGT	#1	LEYMUS CONDENSATUS 'CANYON PRINCE'	RYEGRASS	3\" O.C. TRI. SPACING



This is an original unpublished work and may not be copied or otherwise used without written consent of BALCERAK DESIGN.

**BALCERAK DESIGN**  
LANDSCAPE ARCHITECTURE • URBAN FORESTRY  
Santa Rosa, CA 95404  
608 Beaver Street  
Phone (707) 573-8234  
email: balcerak@sonic.net



LEGEND, DETAILS,  
AND WATER  
AND WATER  
CALCULATIONS

EMERALD ALLIANCE  
GROWING FACILITY  
2875 SEBASTOPOL ROAD  
SANTA ROSA, CALIFORNIA

Date	No.	Revision

Date: 1/5/17  
Scale: AS NOTED  
Drawn: GFB  
Job: 1609  
Sheet  
**L-2**  
Of Sheets