

2017/18 WATER WASTEWATER BUDGETS



Board of Public Utilities
April 6, 2017

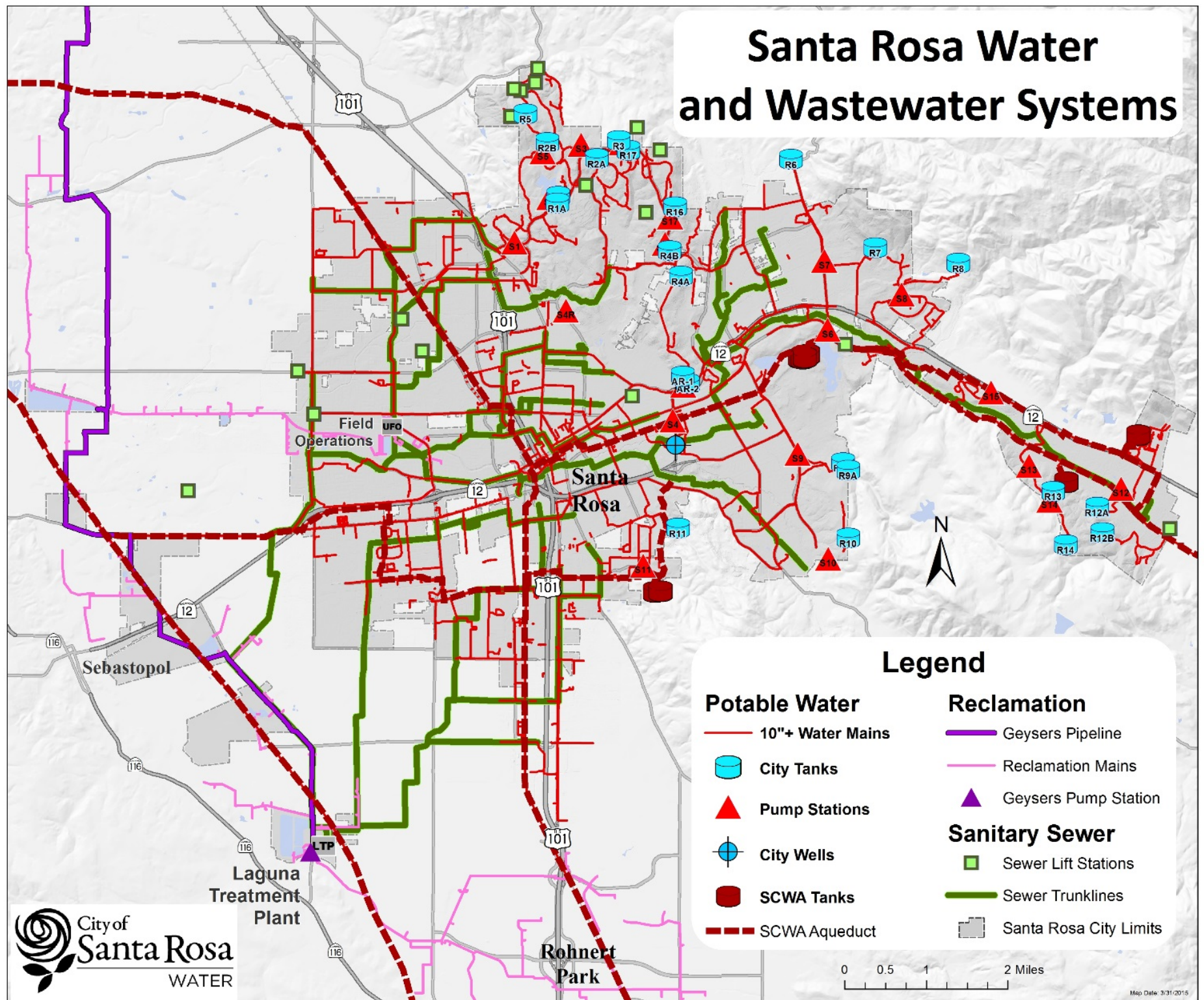


Our mission:

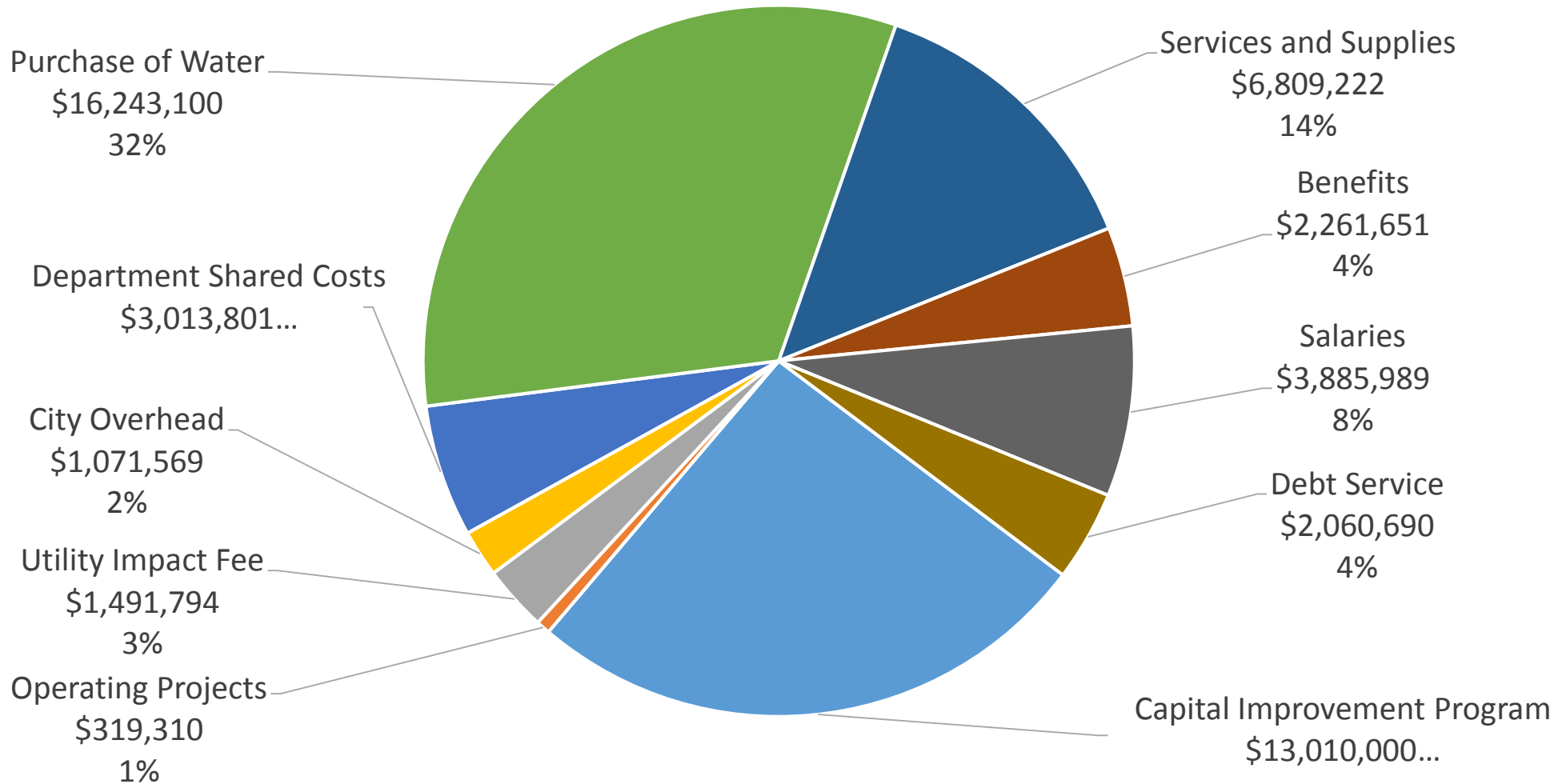
Protecting public health
by sustaining water
resources, infrastructure
and the environment



Santa Rosa Water and Wastewater Systems



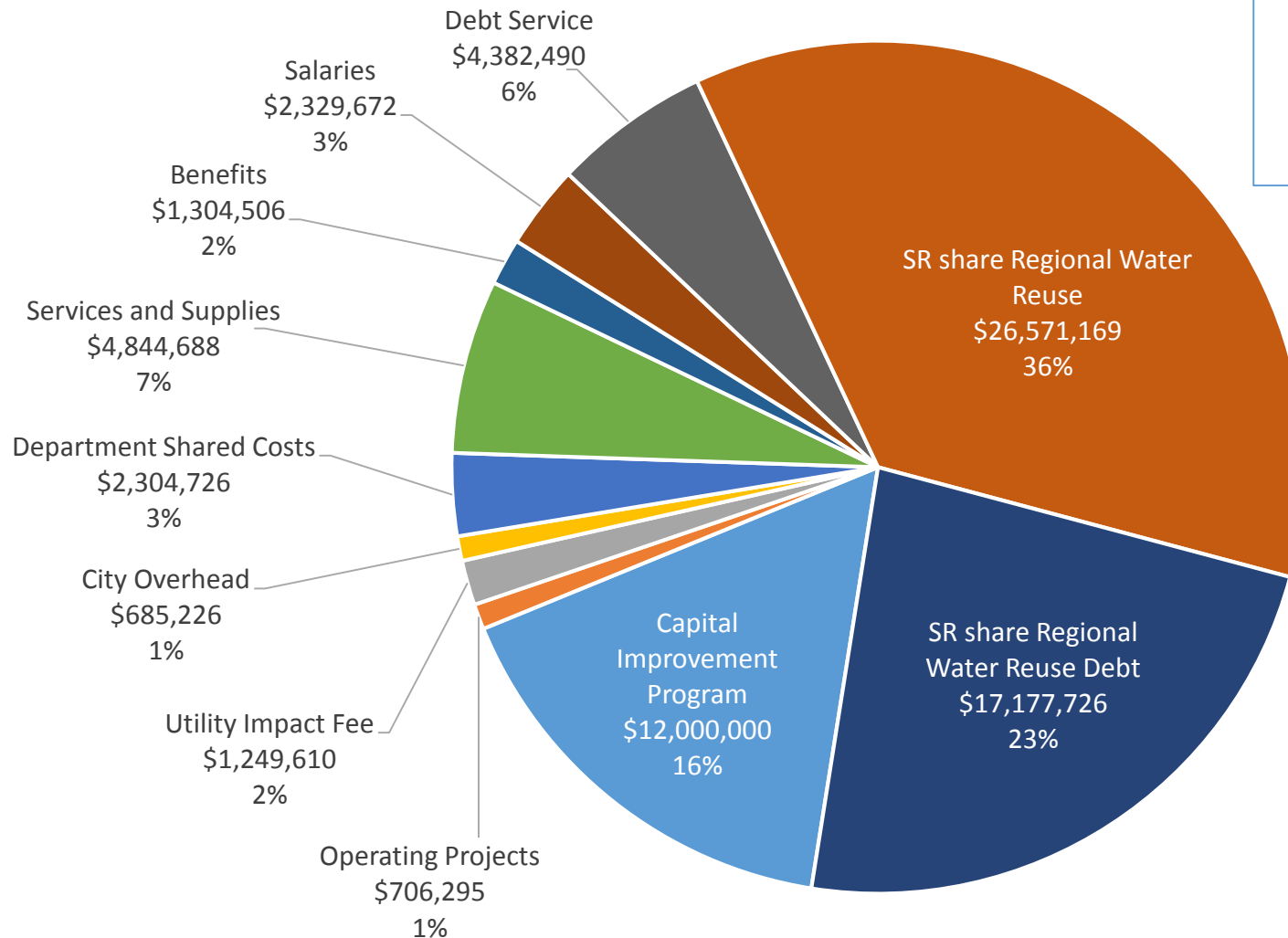
2017/2018 Water Budget



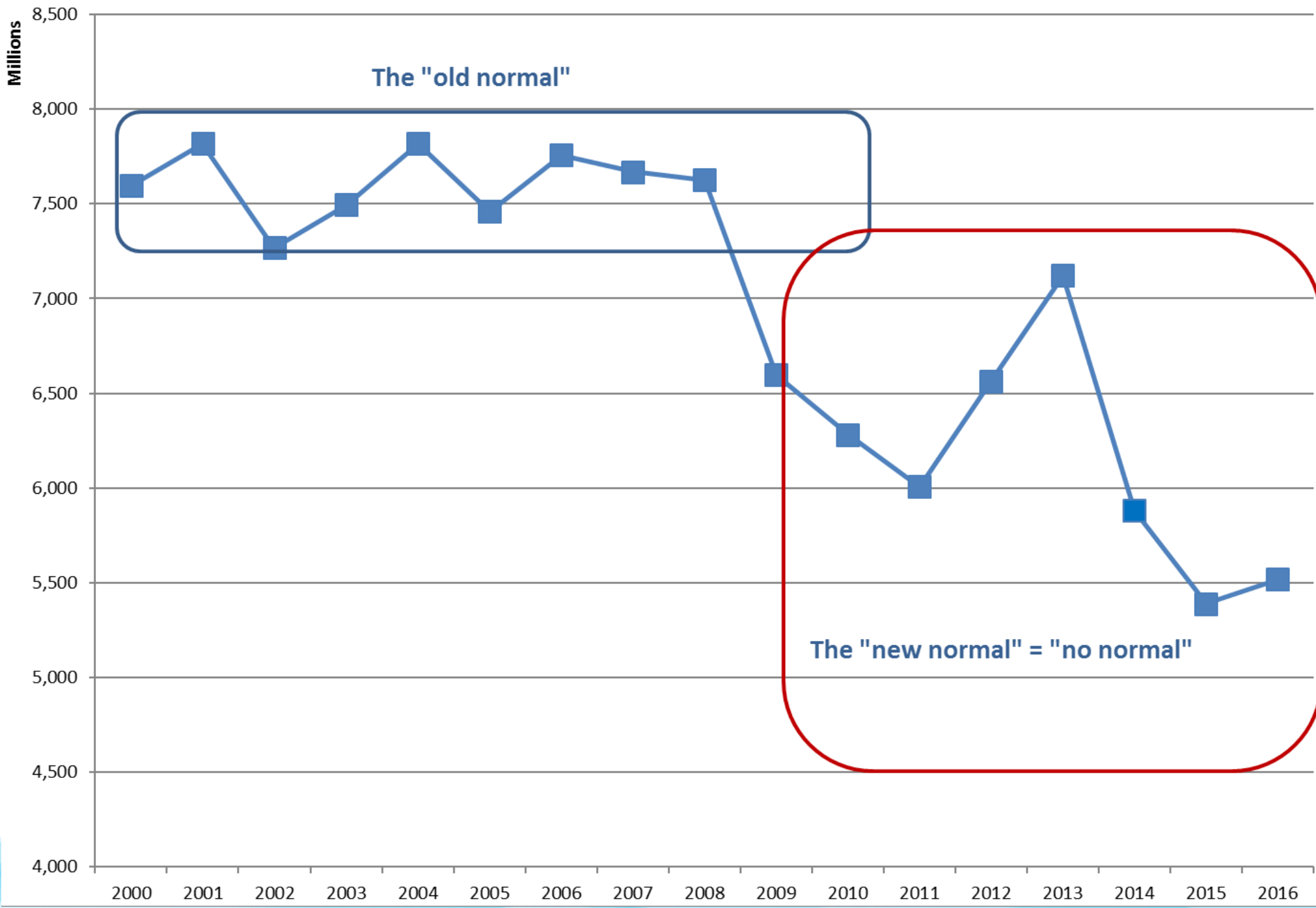
Total Request
\$50,167,126
Up 3.5% from 2016/17

2017/2018 Wastewater Budget

**Total Request
\$73,556,108
Up 10.6% from
2016/17**

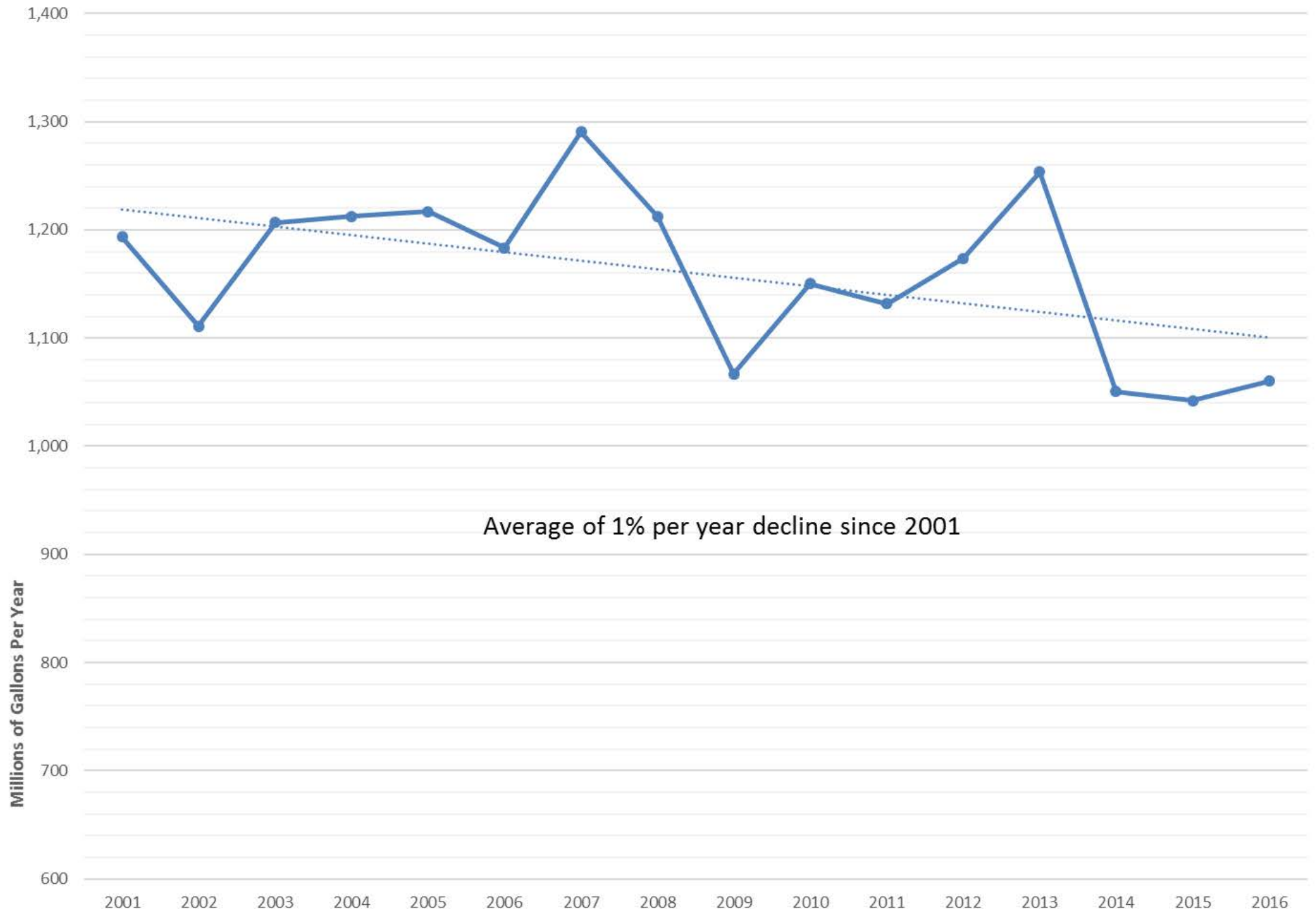


Water Use Assumptions



Sewer Cap Assumption

November / December / January Water Usage



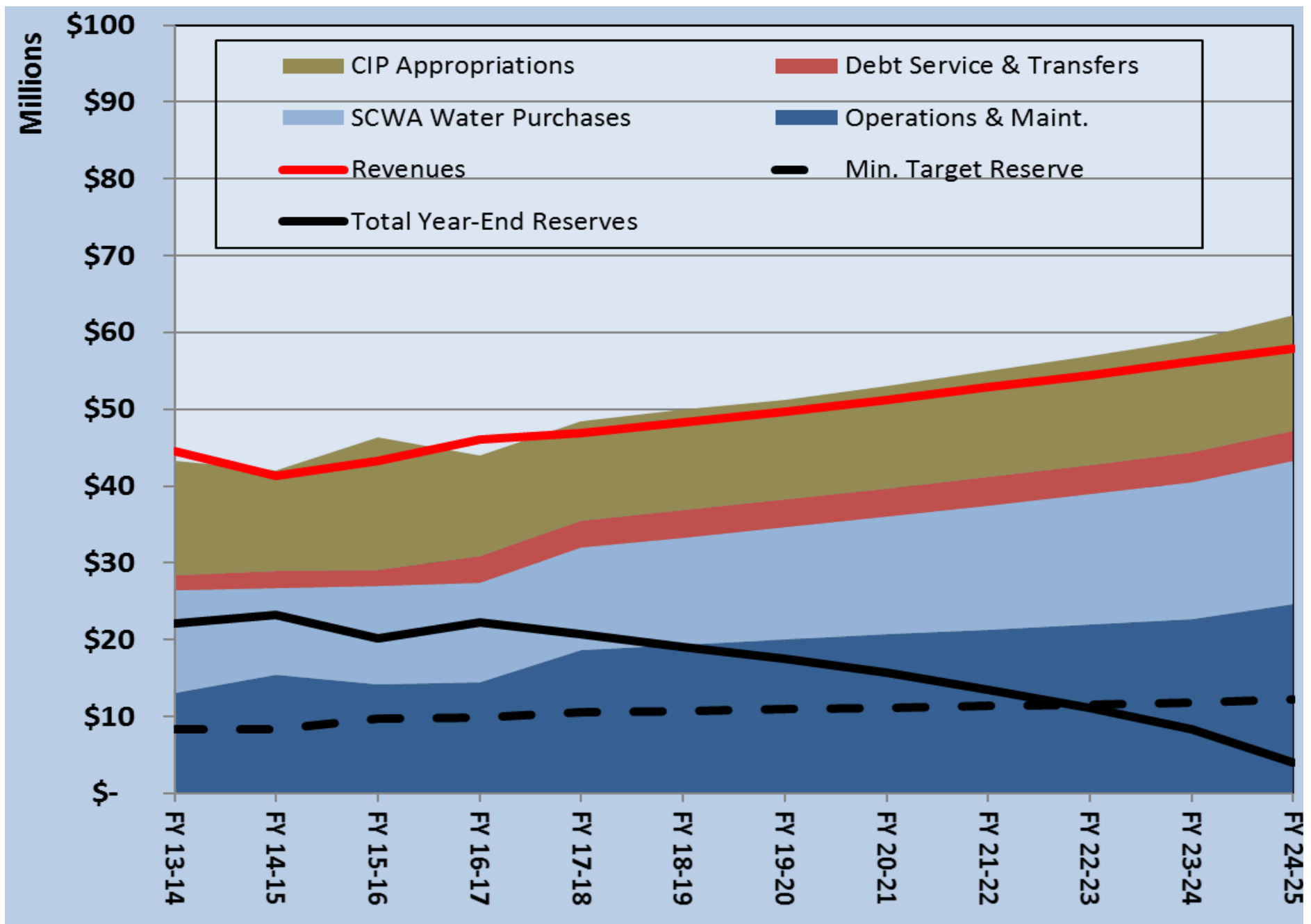
Revenue Assumptions

- Water rate revenue will increase by pre-approved rates, but otherwise be flat in 2017/18 as compared to 2016/17
- Wastewater revenue will increase by pre-approved rates and will be up 2% in 2017/18 compared to 2016/17

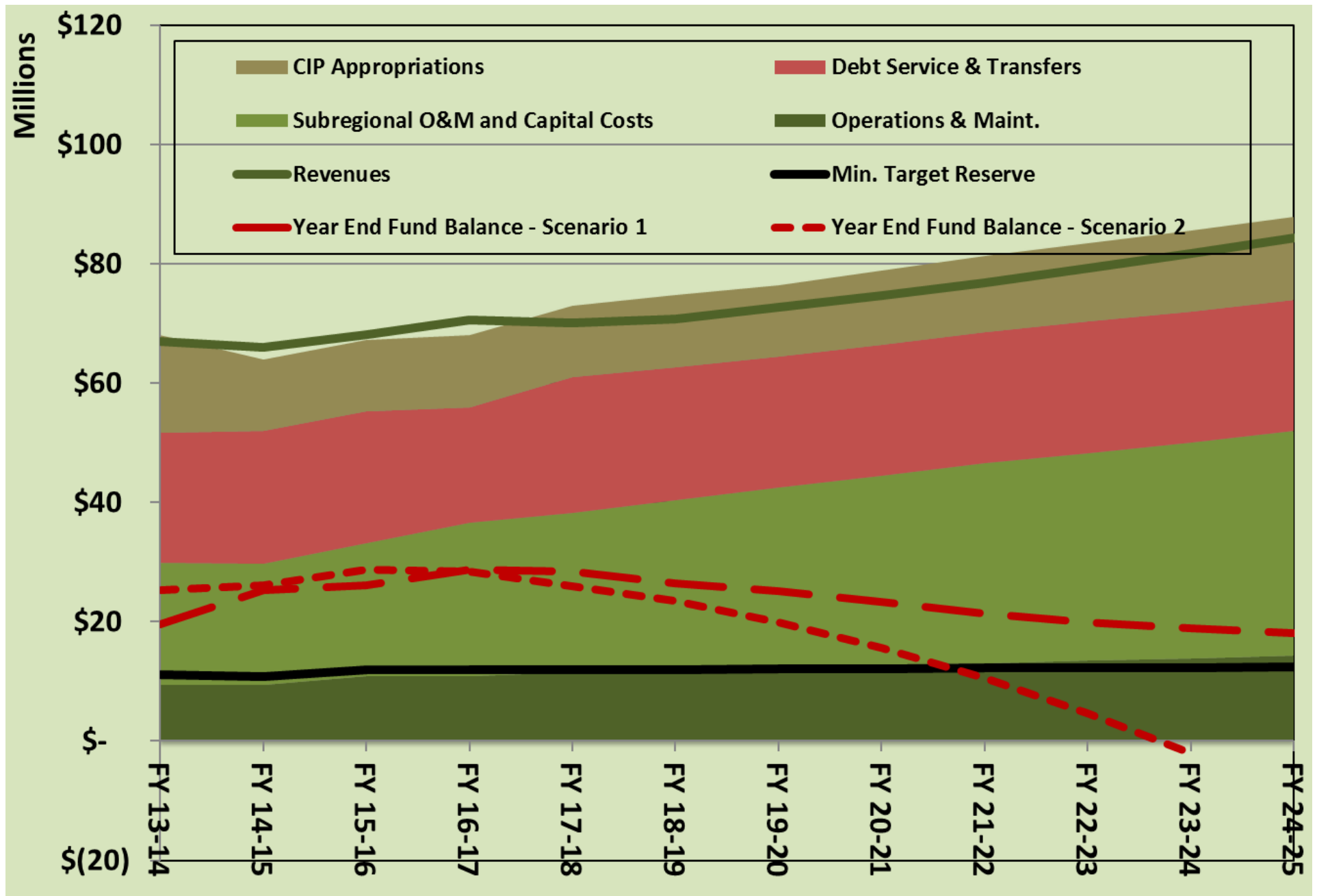
Reserve Balances Over Target Reserve Levels

- Offset rate fluctuations due to uneven water sales
- Spend down over time
- Use for one time or extraordinary expenditures
- Create alternative options to balance possible scenarios

Long Range Financial Plan - Water



Long Range Financial Plan – Wastewater



City Council Authorized Rate Increase

December 2015, City Council approved 5-year rate plan authorizing;

- The pass-through increase of any Sonoma County Water Agency wholesale rate to the water usage charge (the actual 2016 pass-through will average 2.6%)
- A 5% increase in the water fixed charge
- A 3% increase in the sewer fixed and usage charge
- COMBINED these increases would result in most customers receiving a rate increase of about 2.8%

Wholesale Water Rate Pass-Through

	Current Rate	\$	806.59	/AF			
	New Rate	\$	846.78	/AF			
	Change		4.98%				
	Current Rates and Charges	% SCWA Water Cost (3)	SCWA Adjustment	Adjusted Water Usage Rates (\$/tg) and % Change			
WATER RATES							
Water Usage Rates (\$/1,000 gallons)							
Single Family							
Tier 1	\$	5.39	44.4%	\$	0.12	\$	5.51 2.2%
Tier 2	\$	6.29	41.4%	\$	0.13	\$	6.42 2.1%
Comm./Indus./Inst.							
All Water Use	\$	5.73	43.2%	\$	0.12	\$	5.85 2.1%
Irrigation							
Tier 1	\$	5.43	45.0%	\$	0.12	\$	5.55 2.2%
Tier 2	\$	6.85	37.9%	\$	0.13	\$	6.98 1.9%
Monthly Service Charges							
No change to service charges due to changes in SCWA costs.							

Typical Residential Bill

5% increase to water fixed charge; average 2.2% increase to water usage charge
3% increase to sewer fixed and usage charges

	tg	Current	July Increase	New Amount	
Water Usage Tier 1	4.6	\$24.79	\$0.55	\$25.34	
Water Usage Tier 2	3	\$18.87	\$0.40	\$19.27	
Water Fixed Charge		\$11.32	\$0.57	\$11.89	
Total Water		\$54.98	\$1.51	\$56.49	
Sewer Usage	4.6	\$61.36	\$1.84	\$63.20	
Sewer Fixed Charge		\$23.19	\$0.70	\$23.89	
Total Sewer		\$84.55	\$2.54	\$87.09	
TOTAL BILL		\$139.54	\$4.04	\$143.58	2.8%

Recommendation

- It is recommended by Santa Rosa Water staff that the Board of Public Utilities, by resolution, recommend that the City Council approve the Fiscal Year 2017/18 Water Fund and Local Wastewater Fund operation, maintenance and capital expenditure appropriation requests.

QUESTIONS?



OUR FUTURE IN EVERY DRÖP