

# Recommendation of Approval of the Joint Exercise of Powers Agreement Creating the Santa Rosa Plain Groundwater Sustainability Agency

Board of Public Utilities

April 20, 2017



Santa Rosa Water | Our Future in Every Drop

# Presentation Outline

- Groundwater Use Background
- Sustainable Groundwater Management Act (SGMA) Requirements
- Overview of the Joint Exercise of Powers Agreement
- Recommendation



# Santa Rosa Groundwater

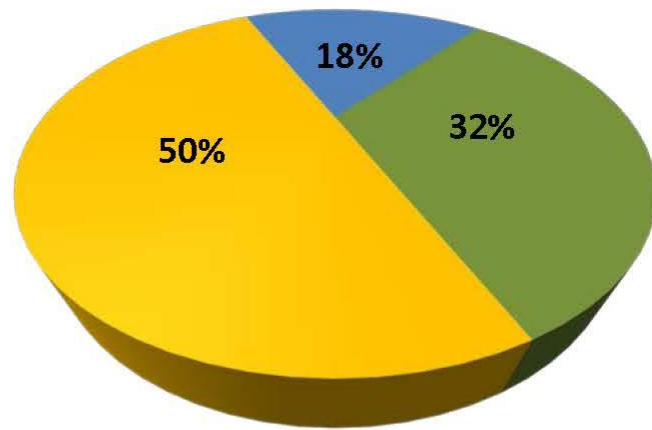
- Provides 5-10% annual water supply
  - Farmers Lane Wells
- 2013 – Santa Rosa GW Master Plan completed
  - Strategic direction for sustainable groundwater use
  - Recommended Emergency Groundwater Supply Program



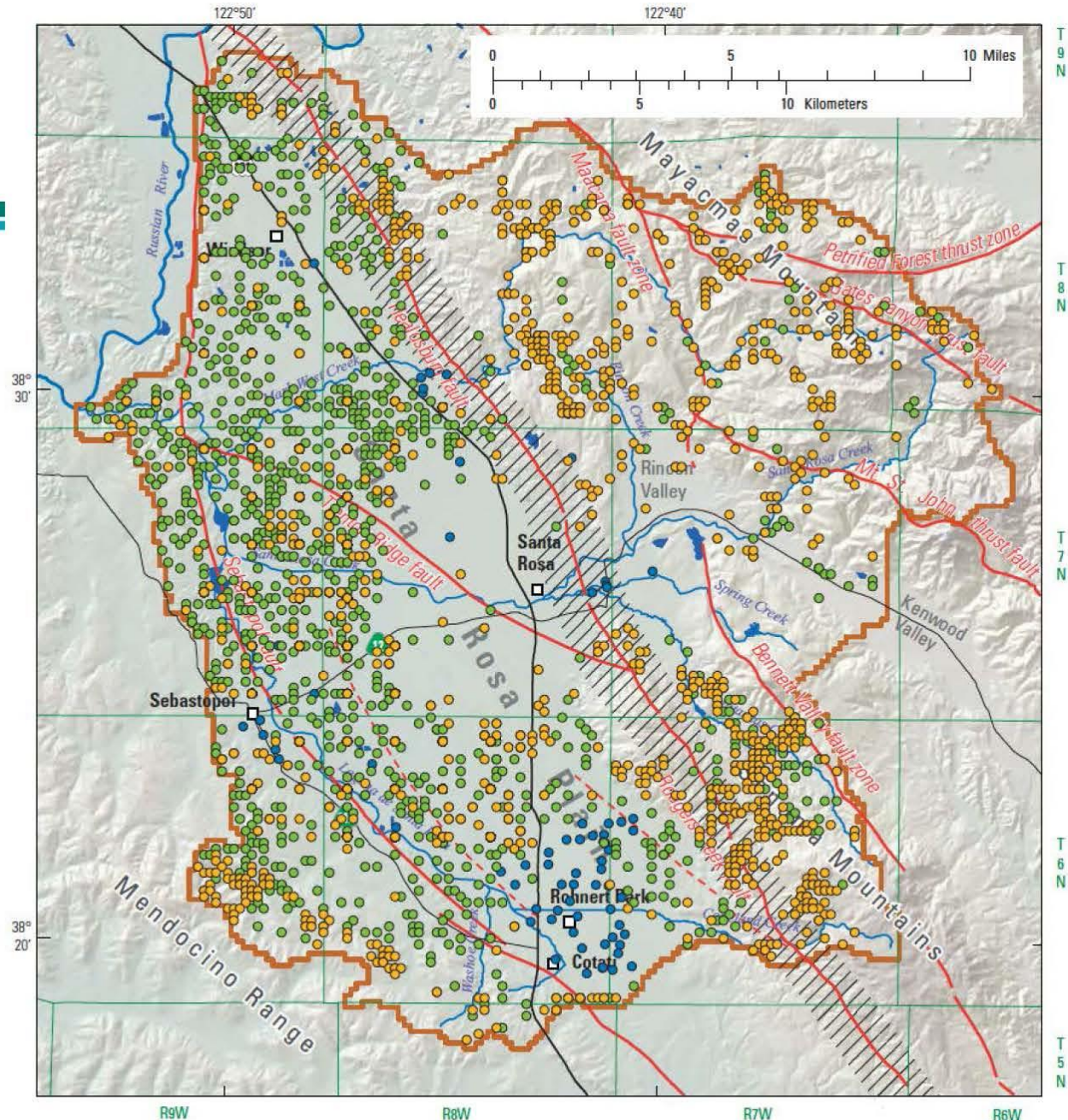
Santa Rosa Water | Our Future in Every Drop

# Water Wells in the Santa Rosa Plain

Santa Rosa Plain Estimated Groundwater Demands by Use Type: Average for 1976-2010 (USGS, 2014)



- Agriculture
- Rural Domestic
- Municipal Supply



Base from U.S. Geological Survey digital data, 1:1,000,000, downloaded 2003 State Plane Projection, Fipzone 402. Shaded relief base from 1:250,000 scale Digital Elevation Model; sun illumination from northwest at 30 degrees above horizon.

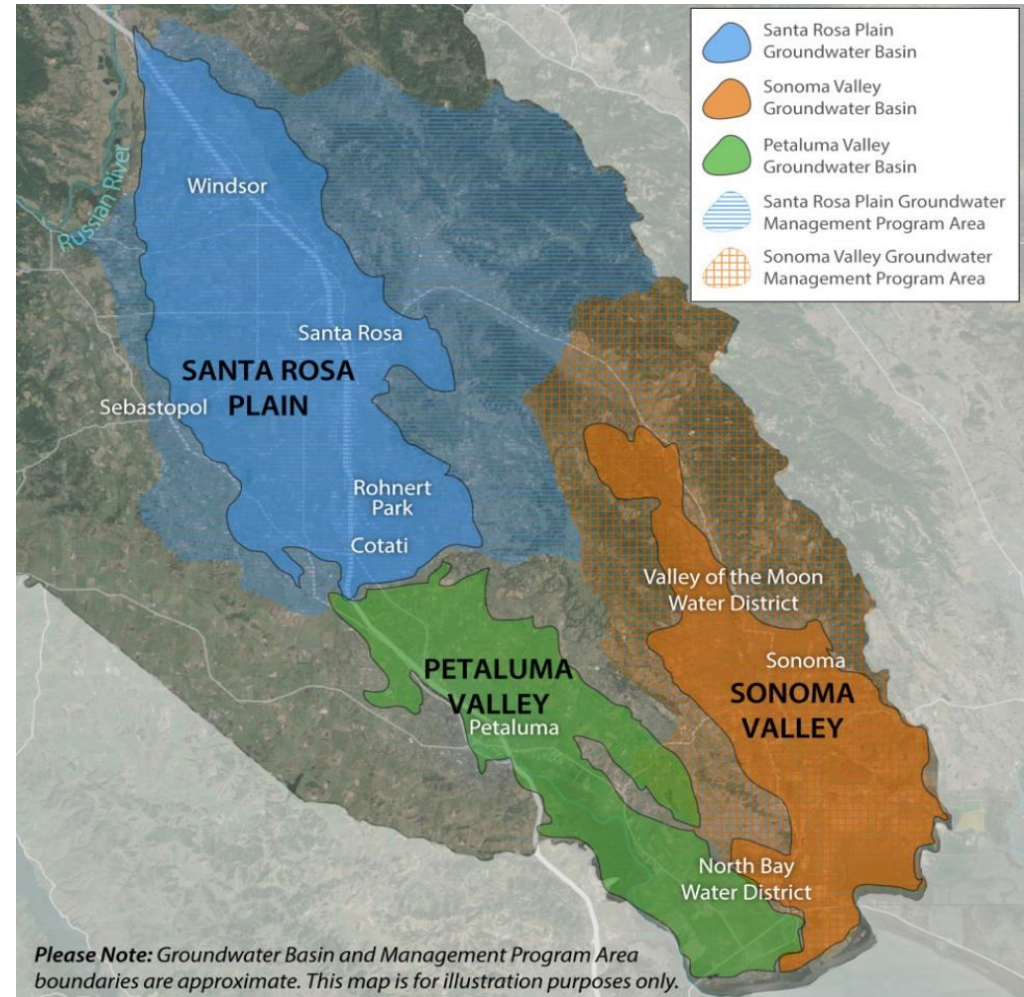
## EXPLANATION

- /// Rodgers Creek fault zone
- Inferred fault
- Domestic well
- Agricultural well
- Public-supply well



# SGMA Brief Summary

- Became law Jan 1<sup>st</sup> 2015
- Applies statewide to medium and high priority basins
- Applies to three basins in Sonoma County



Santa Rosa Water | Our Future in Every Drop

# Required Steps to Groundwater Sustainability

## Step one

Form  
Groundwater  
Sustainability  
Agency (GSA)  
June 30, 2017

## Step two

Develop  
Groundwater  
Sustainability  
Plan (GSP)  
January 31, 2022

## Step three

Achieve  
Sustainability  
20 years after  
adoption of  
plan\*

\* DWR may grant up to two, five-year extensions on implementation upon showing of good cause and progress

# Management Authorities under SGMA

GSAs have authority to:

- Conduct studies
- Register & monitor wells
- Set well spacing requirements
- Require extraction reporting
- Regulate extractions
- Implement capital projects
- Assess fees to cover costs

Must develop GSP by 2022



# Domestic Wells and SGMA

Source: State Water Resources Control Board

- Referred to as “de minimis” users in SGMA
  - Use 2 acre-feet of water per year or less for domestic purposes
- Domestic wells are subject to SGMA, depending on local needs
  - GSAs will decide how domestic wells are incorporated
  - GSAs can decide to exclude or include
  - GSAs can decide on fees
  - GSAs cannot require metering
  - May be subject to reporting and fees to state if intervention occurs
- Domestic wells can also be regulated by authorities (counties and cities, etc.) outside the scope of SGMA



Santa Rosa Water | Our Future in Every Drop



# GSA Eligible Entities

- Each agency must have one of the following authorities:
  - Water supply
  - Water management
  - Land Use
- County is the default in “uncovered areas”



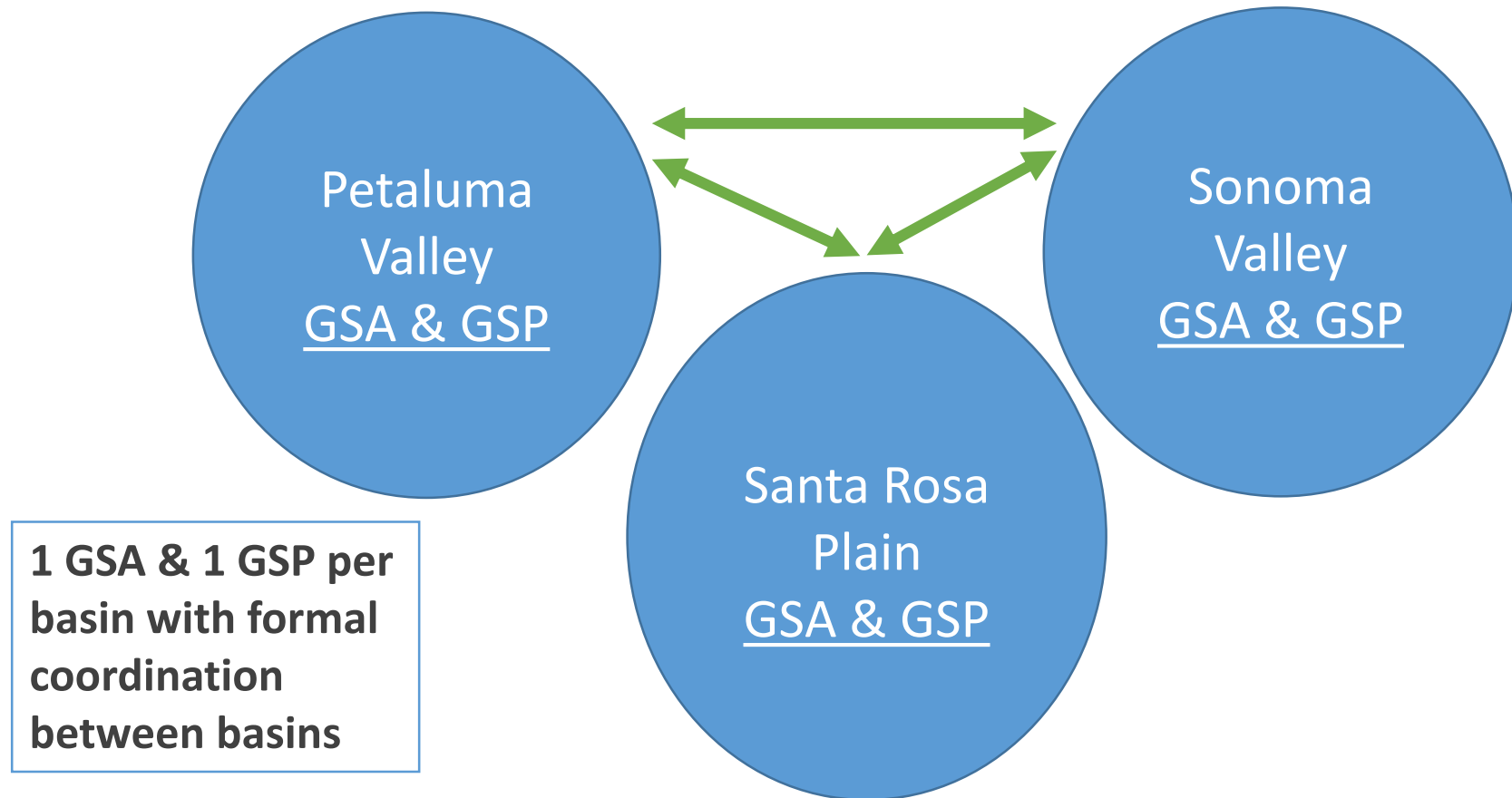
<b>PETALUMA VALLEY</b>	<b>SANTA ROSA PLAIN</b>	<b>SONOMA VALLEY</b>
<b>City of Petaluma</b>	<b>City of Cotati</b>	<b>City of Sonoma</b>
<b>North Bay Water District</b>	<b>City of Rohnert Park</b>	<b>Valley of the Moon Water District</b>
<b>County of Sonoma</b>	<b>City of Santa Rosa</b>	<b>North Bay Water District</b>
<b>Sonoma County Water Agency</b>	<b>City of Sebastopol</b>	<b>County of Sonoma</b>
<b>Sonoma Resource Conservation District</b>	<b>Town of Windsor</b>	<b>Sonoma County Water Agency</b>
	<b>County of Sonoma</b>	<b>Sonoma Resource Conservation District</b>
	<b>Sonoma County Water Agency</b>	
	<b>Sonoma Resource Conservation District</b>	
	<b>Gold Ridge Resource Conservation District</b>	

# Principles for Developing GSA Governance Options

- Build upon existing cooperation and successful water management efforts in Sonoma County
- Reinforce “local management” principles in SGMA
- Share resources and identify cohesive approach
- Costs should be equitably shared
- Represent community stakeholders through advisory committees
- Conduct robust and transparent outreach



# GSA Framework Structure





# Possible Areas of Coordination Between Basins

- Grant writing and funding requests
- Data framework/management system
- Basin boundary adjustments
- Any activities that impact the adjacent basin
- Communication with state and federal agencies
- Public outreach and stakeholder engagement
- Monitoring protocols and coordination
- Staffing



# Proposed Governance: GSA Board

- Eligibility: Determined by State
  - GSA-eligible entities that are being formed can receive ex-officio (non-voting seat) while formation is in process
  - Once formed, new entity would receive voting seat
- Board: One rep from each GSA-eligible entity
- Representation: Elected/appointed officials from each entity serve on board



Santa Rosa Water | Our Future in Every Drop



# Proposed Governance: PUC-R and Mutuals

- SGMA allows that Public Utilities Commission Regulated (PUC-R) and Mutual Water Companies may join a GSA by agreement
  - Cal American Water Co leading an effort to develop participation agreement
- GSA Board will consider participation agreement
- PUC-R and Mutuals will have one seat on GSA Board and one seat on Advisory Committee



# Proposed Governance: Voting

- Quorum: Majority of the Directors
- One vote per entity
  - Simple majority for “housekeeping” (contracts, setting meeting dates, etc.)
  - Super-majority vote (75%) needed for substantial items (fees, regulations, budgets, etc)
  - Unanimous vote needed to assess entities



Santa Rosa Water | Our Future in Every Drop





# Proposed Governance: Advisory Committee

- Strong advisory body: Created for stakeholder input
- Purpose: Advise GSA Board on plan development & implementation
- Appointments:
  - GSA Eligible - Appointed by Member agency
  - Interest based - Formal application process
- Terms: Two-year terms
- Transparency: Public process, Brown Act meetings
- Decision-making: Charter & protocols



# Proposed Governance: Advisory Committee

GSA-ELIGIBLE ENTITY APPOINTMENTS	INTEREST BASED APPOINTMENTS
<p>One from each entity participating in GSA:</p> <ol style="list-style-type: none"> <li>1. Cotati</li> <li>2. Rohnert Park</li> <li>3. Santa Rosa</li> <li>4. Sebastopol</li> <li>5. Windsor</li> <li>6. Sonoma County</li> <li>7. Sonoma County Water Agency</li> <li>8. Sonoma Resource Conservation District</li> <li>9. Gold Ridge Resource Conservation District</li> <li>10. Mutual/PUC appointed</li> </ol>	<p>Represent SGMA-defined stakeholders:</p> <ul style="list-style-type: none"> <li>Environmental representative</li> <li>Environmental representative</li> <li>Rural residential well owner</li> <li>Rural residential well owner</li> <li>Business community representative</li> <li>Agricultural interest (surface water or GW user)</li> <li>Agricultural interest (surface water or GW user)</li> <li>Graton Rancheria*</li> </ul>
Total of 10	Total of 8
Appointed by Boards and Councils	*Appointed by GSA Board (except Graton Rancheria)
Each entity determines process	Formal application process

# Proposed Governance: Start-Up Costs

- Funding subcommittee formed representing all basins
- 3 start-up cost components:
  - GSP preparation
  - Administration & operations
  - Development of revenue mechanism
- Estimates compare well with estimates from other areas
- Coordination & utilization of existing staff to reduce costs
- GSA-eligible entities will cover start-up costs



Santa Rosa Water | Our Future in Every Drop



# Proposed Governance: Financial Commitments

- Year One (\$460,000 total):
  - Sonoma RCD commitment – \$20,000
  - All other entities share equally – \$55,000
  - Initial commitments due on July 31, 2017
- Estimated Year Two (\$530,000 total):
  - Sonoma RCD commitment – \$20,000
  - All other entities share equally – \$64,000
  - Initial commitments due on July 31, 2018





# Proposed Governance: Management & Staffing

- No new staff during first year
- Member entity staff will serve as interim administrator until GSA Board determines management structure
- Other entity staff will provide in-kind services for:
  - Technical services
  - Monitoring
  - Fiscal services
  - Outreach
- Staff from all entities will serve as sounding board for contracts and other issues



Santa Rosa Water | Our Future in Every Drop



# Proposed Governance: Termination of Members

- JPA allows for GSA Board to terminate a member for failing to meet financial obligations
- To ensure participation by members, JPA allows for GSA Board to suspend a GSA Board member's voting rights



# Proposed Governance: Periodic Check-In

- To ensure JPA meets GSA needs, a public review will be held to review the terms and conditions of the JPA:
  - After initial fee study
  - After GSP is adopted
  - Every 10 years after GSP adoption



Santa Rosa Water | Our Future in Every Drop

# Proposed Governance: JPA Amendments

- Supermajority vote of GSA Board for minor, administrative amendments
- Unanimous consent of JPA member governing bodies for amendments resulting in:
  - Any change in Powers
  - Any change in Board composition, except as already provided for in the JPA
  - Any change in Voting requirements
  - Any changes to Liabilities and Indemnification provisions
  - Any changes to Termination and Withdrawal provisions
  - Elimination of the Advisory Committee

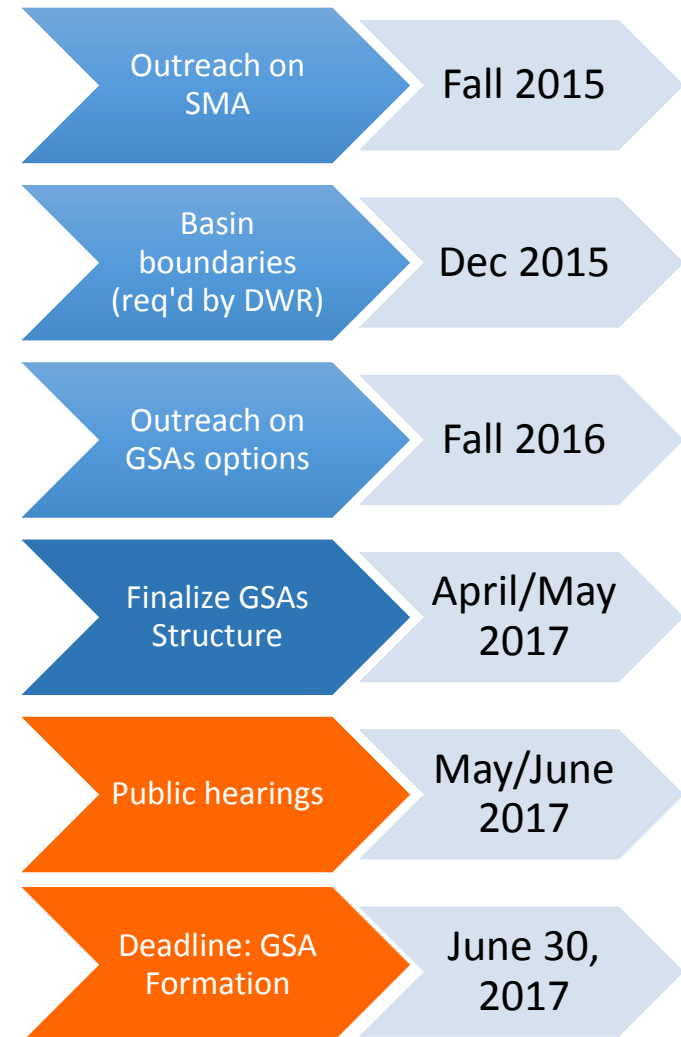




<b>GSA-ELIGIBLE ENTITY</b>	<b>DATE FOR CONSIDERATION OF LEGAL AGREEMENT</b>
<b>City of Cotati</b>	April 25
<b>City of Rohnert Park</b>	April 25
<b>City of Santa Rosa</b>	May 2
<b>City of Sebastopol</b>	April 18
<b>Town of Windsor</b>	April 19
<b>County of Sonoma</b>	April 25
<b>Sonoma County Water Agency</b>	April 25
<b>Sonoma Resource Conservation District</b>	April 27
<b>Gold Ridge Resource Conservation District</b>	April 20

# Next Steps

- Council consideration May 2<sup>nd</sup>
- GSA Board initial meeting and public hearing
- Tentatively Scheduled:
  - Date: June 1, 2017
  - Time: 5 – 8 PM
  - Location: TBD
- Notify State of GSA Formation



Santa Rosa Water | Our Future in Every Drop

# Recommendation

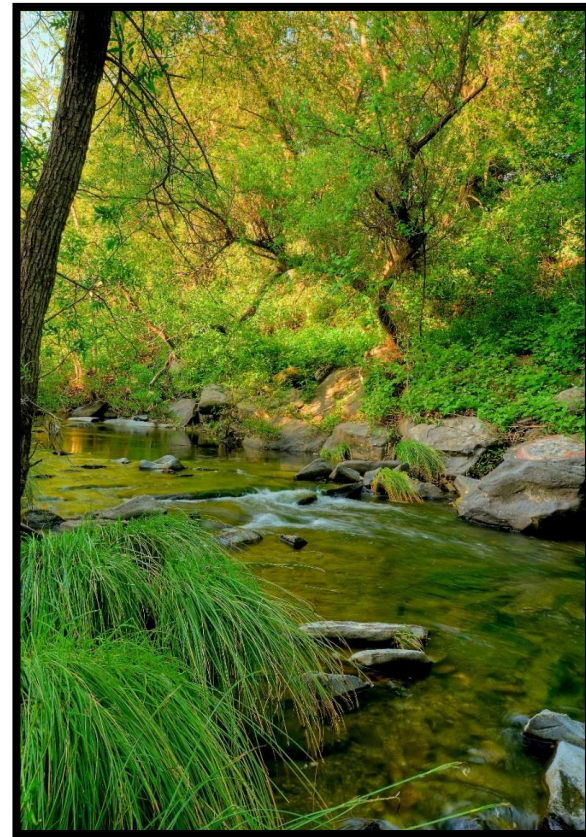
Santa Rosa Water recommends that the Board, by resolution, recommend that the Council:

- 1) Approve the Joint Exercise of Powers Agreement (JPA) creating the Santa Rosa Plain Groundwater Sustainability Agency (GSA) to act as the single GSA for the Santa Rosa Plain sub-basin,
- 2) Approve the City of Santa Rosa's membership in the Santa Rosa Plain GSA, and
- 3) Delegate authority to the Mayor to appoint the Director and Alternate Director to the Santa Rosa Plain GSA Board of Directors, and delegate authority to the Director of Santa Rosa Water to appoint the Santa Rosa Plain GSA advisory committee member and alternate.



# Thank You

## Questions/Comments?



Santa Rosa Water | Our Future in Every Drop