

SEAL

806 Donahue Street/ 8 West 9th Street  
Santa Rosa, CA 95401

[illegible]

DATE:	10/13/16
PROJECT NUMBER:	15-043
PROJECT PHASE:	SD
DRAWN BY:	Author
CHECKED BY:	Checker

Copyright 2016  
O'Malley Wilson Westphal, Inc.

SHEET TITLE

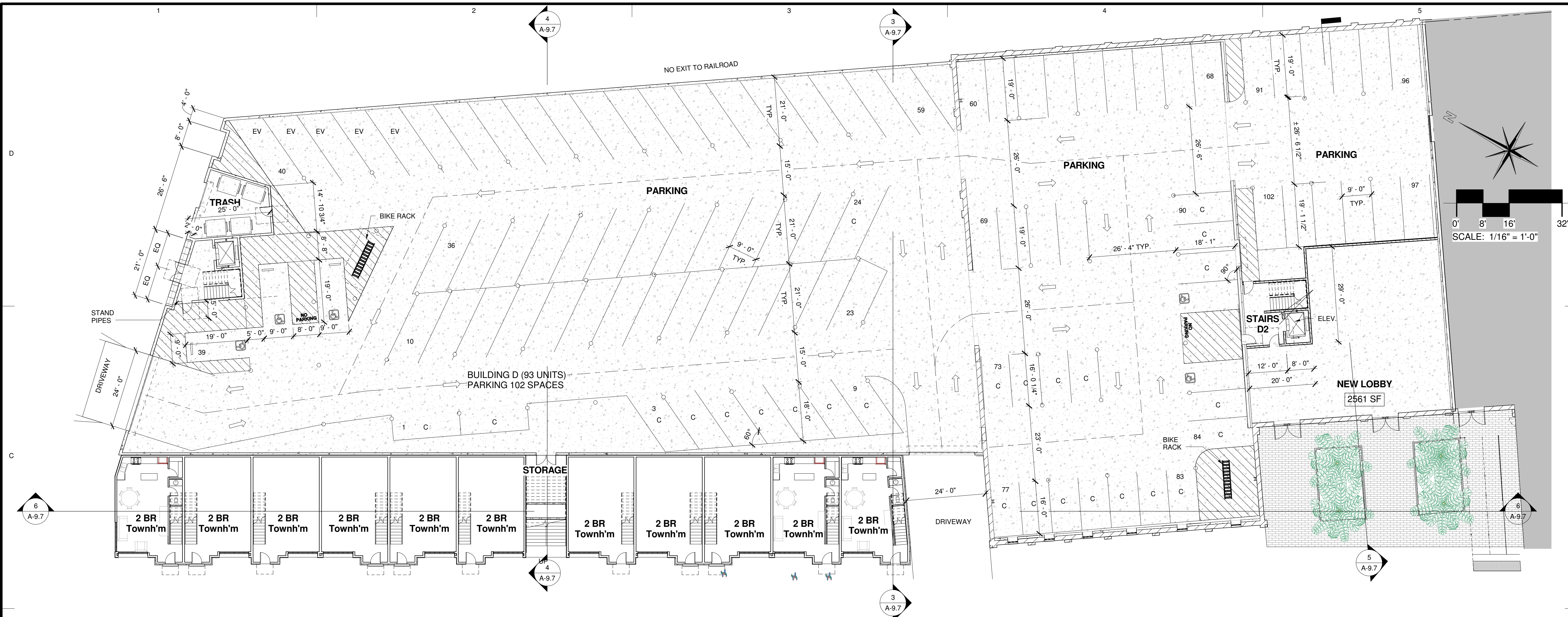
SHEET NUMBER

An architectural rendering of a proposed new building. The building is a long, rectangular structure made of red brick. It features a series of windows along its length, including some circular windows and a small arched window. A chimney is visible on the left side of the building. The building is situated on a flat, grey ground. To the left of the main building, there is a smaller, white building with a dark roof. The sky is a light blue gradient.

A 3D architectural rendering of a large, multi-story industrial building complex. The building features a prominent red facade and a grey roof. It consists of several interconnected volumes, including a long, low wing on the left, a central courtyard area, and a larger, more complex structure on the right. The rightmost building has multiple stories with numerous windows and a series of circular openings on its lower levels. The central courtyard is paved and surrounded by the building's wings. The overall design is functional and industrial, with a focus on large open spaces and efficient circulation.

{3D}





Area Schedule ( UNITS AREA) BUILDING D				
UNIT NAME	AREA	TYPE	UNIT TYPE	FLOOR

212	816 SF	4	1 BEDROOM	2ND
301	837 SF	4	1 BEDROOM	3RD
313	762 SF	3	1 BEDROOM	3RD
314	769 SF	3	1 BEDROOM	3RD
315	772 SF	3	1 BEDROOM	3RD
316	761 SF	3	1 BEDROOM	3RD
317	775 SF	3	1 BEDROOM	3RD
318	775 SF	3	1 BEDROOM	3RD
319	771 SF	3	1 BEDROOM	3RD
320	774 SF	3	1 BEDROOM	3RD
321	774 SF	3	1 BEDROOM	3RD
322	774 SF	3	1 BEDROOM	3RD
323	774 SF	3	1 BEDROOM	3RD
324	774 SF	3	1 BEDROOM	3RD
325	775 SF	3	1 BEDROOM	3RD
326	774 SF	3	1 BEDROOM	3RD
327	775 SF	3	1 BEDROOM	3RD
328	776 SF	3	1 BEDROOM	3RD
329	775 SF	3	1 BEDROOM	3RD
330	774 SF	3	1 BEDROOM	3RD
331	774 SF	3	1 BEDROOM	3RD
401	755 SF	3	1 BEDROOM	4TH
413	761 SF	3	1 BEDROOM	4TH
414	763 SF	3	1 BEDROOM	4TH
415	763 SF	3	1 BEDROOM	4TH
416	762 SF	3	1 BEDROOM	4TH
417	757 SF	3	1 BEDROOM	4TH
418	759 SF	3	1 BEDROOM	4TH
419	759 SF	3	1 BEDROOM	4TH
420	758 SF	3	1 BEDROOM	4TH
421	763 SF	3	1 BEDROOM	4TH
422	763 SF	3	1 BEDROOM	4TH
423	763 SF	3	1 BEDROOM	4TH
424	764 SF	3	1 BEDROOM	4TH
425	764 SF	3	1 BEDROOM	4TH
426	763 SF	3	1 BEDROOM	4TH
427	764 SF	3	1 BEDROOM	4TH
428	765 SF	3	1 BEDROOM	4TH
429	764 SF	3	1 BEDROOM	4TH

Area Schedule ( UNITS AREA) BUILDING D				
UNIT NAME	AREA	TYPE	UNIT TYPE	FLOOR

430	763 SF	3	1 BEDROOM	4TH
431	764 SF	3	1 BEDROOM	4TH
1 BEDROOM	31,570 SF			
213	805 SF	4	2 BEDROOM	2ND
214	805 SF	4	2 BEDROOM	2ND
215	806 SF	4	2 BEDROOM	2ND
216	803 SF	4	2 BEDROOM	2ND
217	807 SF	4	2 BEDROOM	2ND
218	806 SF	4	2 BEDROOM	2ND
219	804 SF	4	2 BEDROOM	2ND
220	804 SF	4	2 BEDROOM	2ND
221	806 SF	4	2 BEDROOM	2ND
222	806 SF	4	2 BEDROOM	2ND
223	806 SF	4	2 BEDROOM	2ND
224	805 SF	4	2 BEDROOM	2ND
225	808 SF	4	2 BEDROOM	2ND
226	820 SF	4	2 BEDROOM	2ND
227	805 SF	4	2 BEDROOM	2ND
228	807 SF	4	2 BEDROOM	2ND
229	836 SF	4	2 BEDROOM	2ND
230	823 SF	4	2 BEDROOM	2ND
231	835 SF	4	2 BEDROOM	2ND
302	989 SF	5	2 BEDROOM	3RD
303	949 SF	5	2 BEDROOM	3RD
304	949 SF	5	2 BEDROOM	3RD
305	990 SF	5	2 BEDROOM	3RD
306	947 SF	5	2 BEDROOM	3RD
307	947 SF	5	2 BEDROOM	3RD
308	990 SF	5	2 BEDROOM	3RD
309	949 SF	5	2 BEDROOM	3RD
310	949 SF	5	2 BEDROOM	3RD
311	988 SF	5	2 BEDROOM	3RD
312	948 SF	5	2 BEDROOM	3RD
402	897 SF	4	2 BEDROOM	4TH
403	877 SF	4	2 BEDROOM	4TH
404	902 SF	5	2 BEDROOM	4TH
405	880 SF	4	2 BEDROOM	4TH
406	878 SF	4	2 BEDROOM	4TH
407	878 SF	4	2 BEDROOM	4TH

Area Schedule ( UNITS AREA) BUILDING D				
UNIT NAME	AREA	TYPE	UNIT TYPE	FLOOR

408	881 SF	4	2 BEDROOM	4TH
409	904 SF	5	2 BEDROOM	4TH
410	877 SF	4	2 BEDROOM	4TH
411	901 SF	5	2 BEDROOM	4TH
412	873 SF	4	2 BEDROOM	4TH
2 BEDROOM	35,741 SF			
101	655 SF	9	2 BEDROOM 2-STORY TOWNHOME	1ST
101	698 SF	9	2 BEDROOM 2-STORY TOWNHOME	2ND
2 BEDROOM 2-STORY TOWNHOME	1,353 SF			
102	663 SF	10	2 BEDROOM 2-STORY TOWNHOME.	1ST
102	766 SF	10	2 BEDROOM 2-STORY TOWNHOME.	2ND
2 BEDROOM 2-STORY TOWNHOME.	1,429 SF			
103	663 SF	10	2 BEDROOM 2-STORY TOWNHOME..	1ST
103	767 SF	10	2 BEDROOM 2-STORY TOWNHOME..	2ND
2 BEDROOM 2-STORY TOWNHOME..	1,430 SF			
104	663 SF	10	2 BEDROOM 2-STORY TOWNHOME...	1ST
104	766 SF	10	2 BEDROOM 2-STORY TOWNHOME...	2ND
2 BEDROOM 2-STORY TOWNHOME...	1,429 SF			
105	663 SF	10	2 BEDROOM 2-STORY TOWNHOME....	1ST
105	766 SF	10	2 BEDROOM 2-STORY TOWNHOME....	2ND
2 BEDROOM 2-STORY TOWNHOME....	1,429 SF			
106	662 SF	10	2 BEDROOM 2-STORY	1ST

Area Schedule ( UNITS AREA) BUILDING D				
UNIT NAME	AREA	TYPE	UNIT TYPE	FLOOR

106	766 SF	10	2 BEDROOM 2-STORY TOWNHOME.....	2ND
2 BEDROOM 2-STORY TOWNHOME.....	1,427 SF			
107	663 SF	10	2 BEDROOM 2-STORY TOWNHOME.....	1ST
107	766 SF	10	2 BEDROOM 2-STORY TOWNHOME.....	2ND
2 BEDROOM 2-STORY TOWNHOME.....	1,429 SF			
..				
108	663 SF	10	2 BEDROOM 2-STORY TOWNHOME/	1ST
108	766 SF	10	2 BEDROOM 2-STORY TOWNHOME/	2ND
2 BEDROOM 2-STORY TOWNHOME/	1,429 SF			
109	663 SF	10	2 BEDROOM 2-STORY TOWNHOME//	1ST
109	766 SF	10	2 BEDROOM 2-STORY TOWNHOME//	2ND
2 BEDROOM 2-STORY TOWNHOME//	1,429 SF			
110	663 SF	10	2 BEDROOM 2-STORY TOWNHOME//	1ST
110	767 SF	10	2 BEDROOM 2-STORY TOWNHOME//	2ND
2 BEDROOM 2-STORY TOWNHOME///	1,430 SF			
111	638 SF	9	2 BEDROOM 2-STORY TOWNHOME////	1ST
111	756 SF	9	2 BEDROOM 2-STORY TOWNHOME////	2ND
2 BEDROOM 2-STORY TOWNHOME////	1,394 SF			
Grand total	82,918 SF			

Railroad Square  
Village, LLC

## DeTurk Winery Village Apartments

806 Donahue Street/ 8 West 9th Street  
Santa Rosa, CA 95401

[illegible]

DATE:	10/13/16
PROJECT NUMBER:	15-043
PROJECT PHASE:	SD
DRAWN BY:	KO/ ZS
CHECKED BY:	KC

Copyright 2016  
O'Malley Wilson Westphal, Inc.

SHEET TITLE

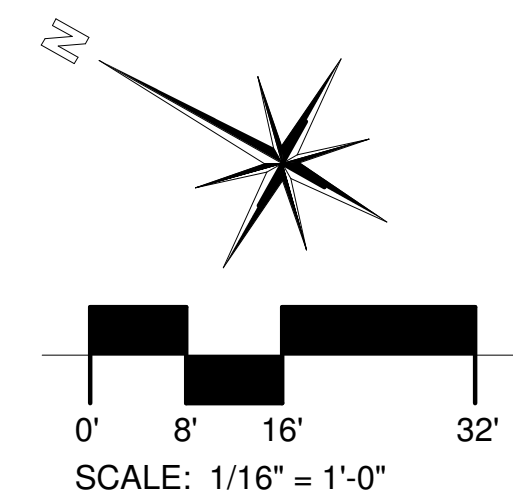
## BUILDING "D" FIRST FLOOR PLAN

SHEET NUMBER

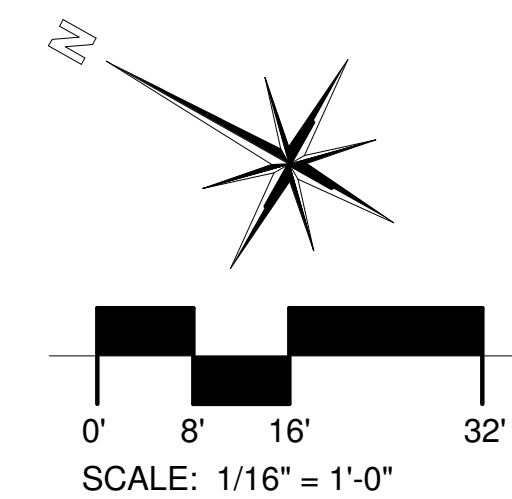
A-9.1



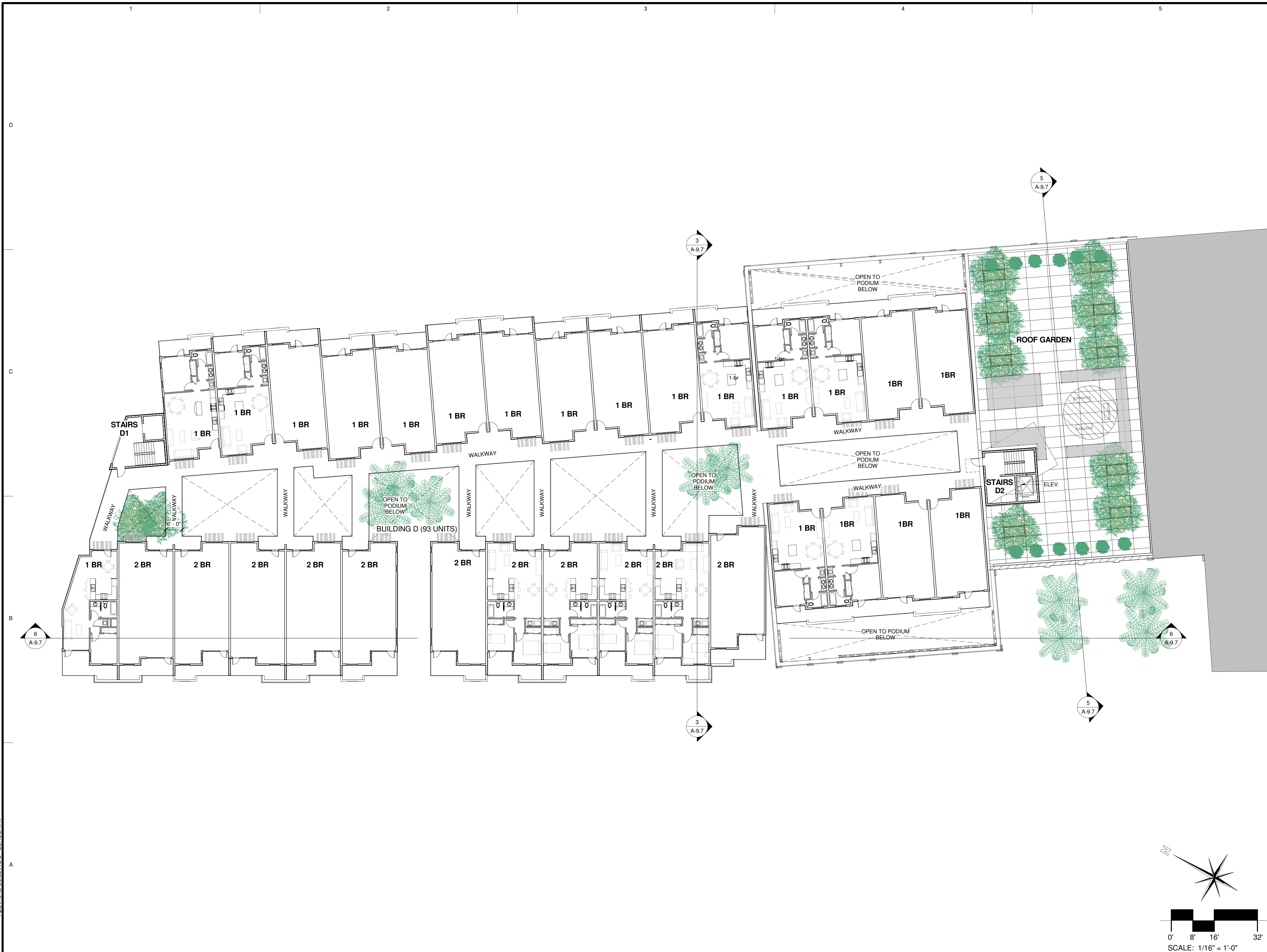
A-9.2









[illegible]

DATE:	10/13/16
PROJECT NUMBER:	15-043
PROJECT PHASE:	SD
DRAWN BY:	KO / ZS
CHECKED BY:	KO







SEAL

806 Donahue Street/ 8 West 9th Street  
Santa Rosa, CA 95401

[illegible]

Copyright 2016  
O'Malley Wilson Westphal, Inc.

## BUILDING "D" EXTERIOR ELEVATIONS

A-9.6









[illegible]

Copyright 2016  
O'Malley Wilson Westphal, Inc.

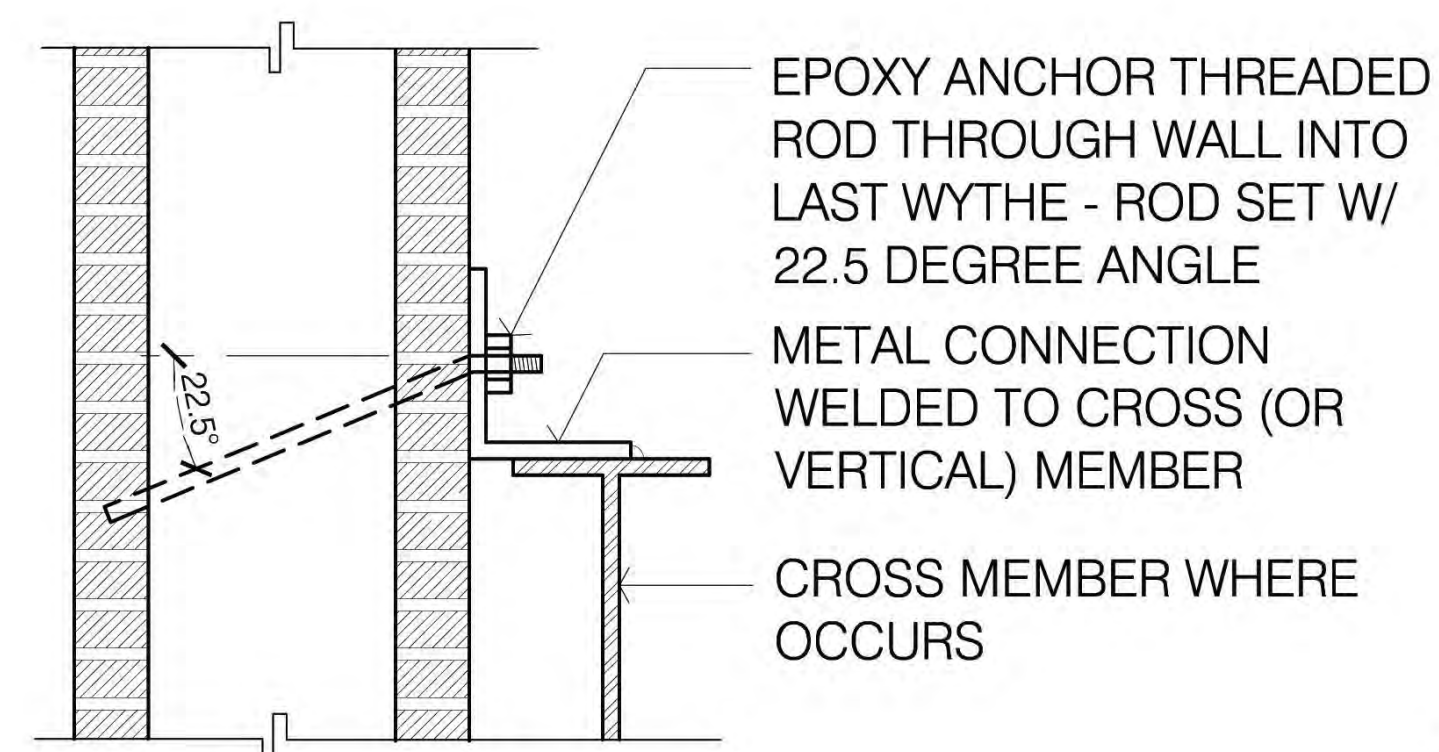
SHEET TITLE

## BUILDING "D" BUILDING SECTIONS AND DETAILS

SHEET NUMBER

A-9.8

<b>MKM</b> & Associates structural engineering	DeTurk Winery Village	Job #	060132
	Exist. Wall at Bldg. C	Date	1/12/07
		Prep	RHB



## BLIND BOLT CONNECTION

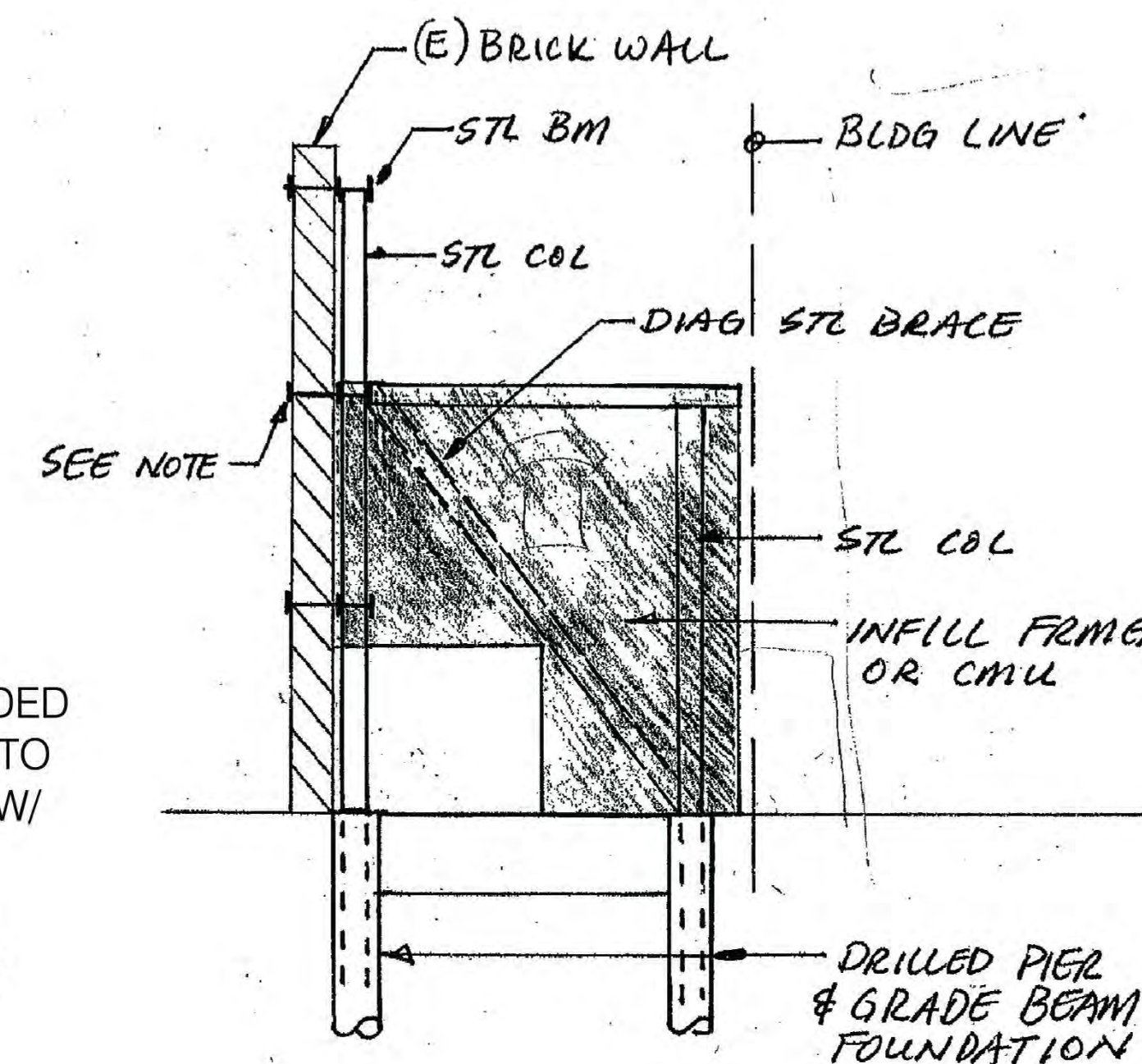
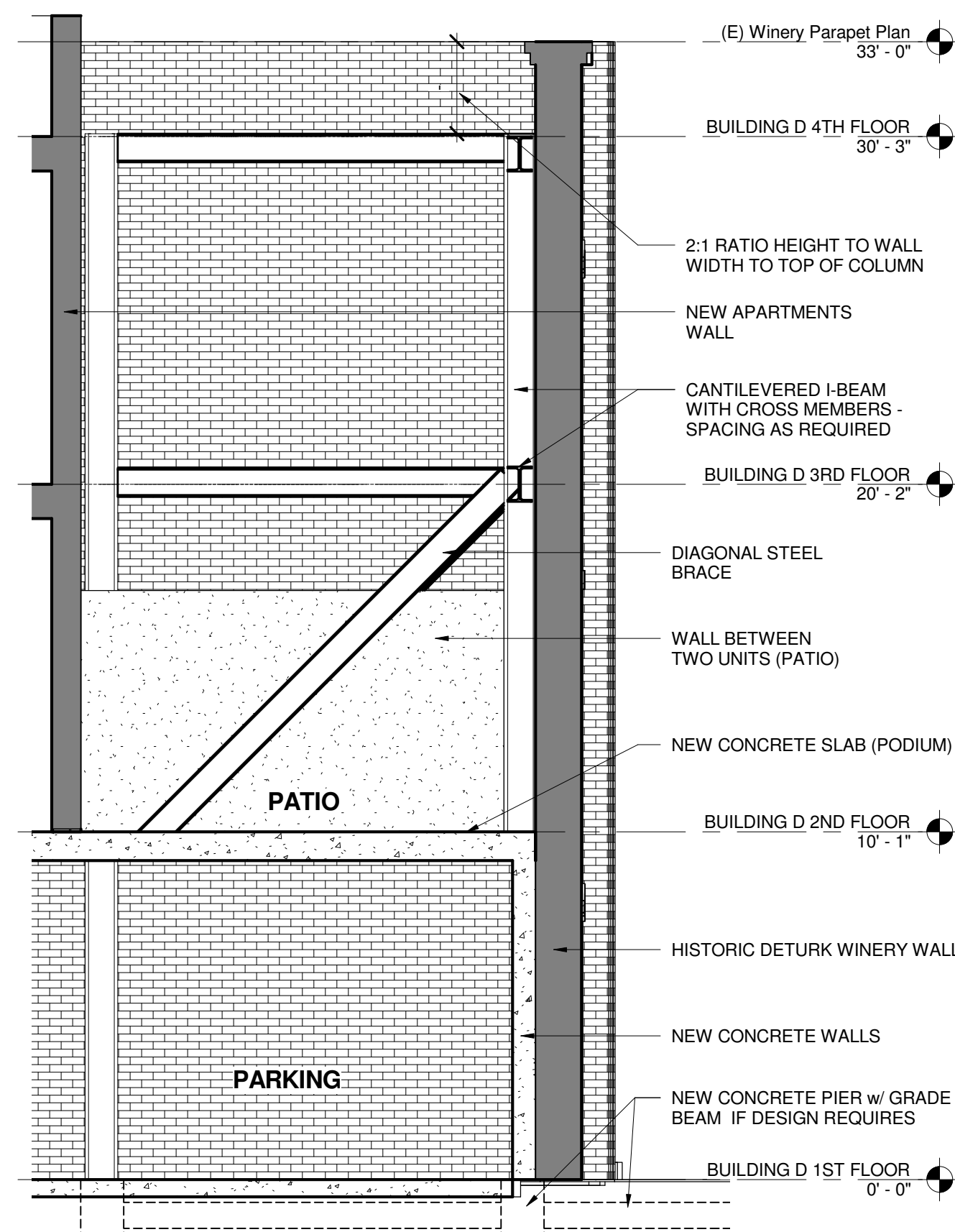


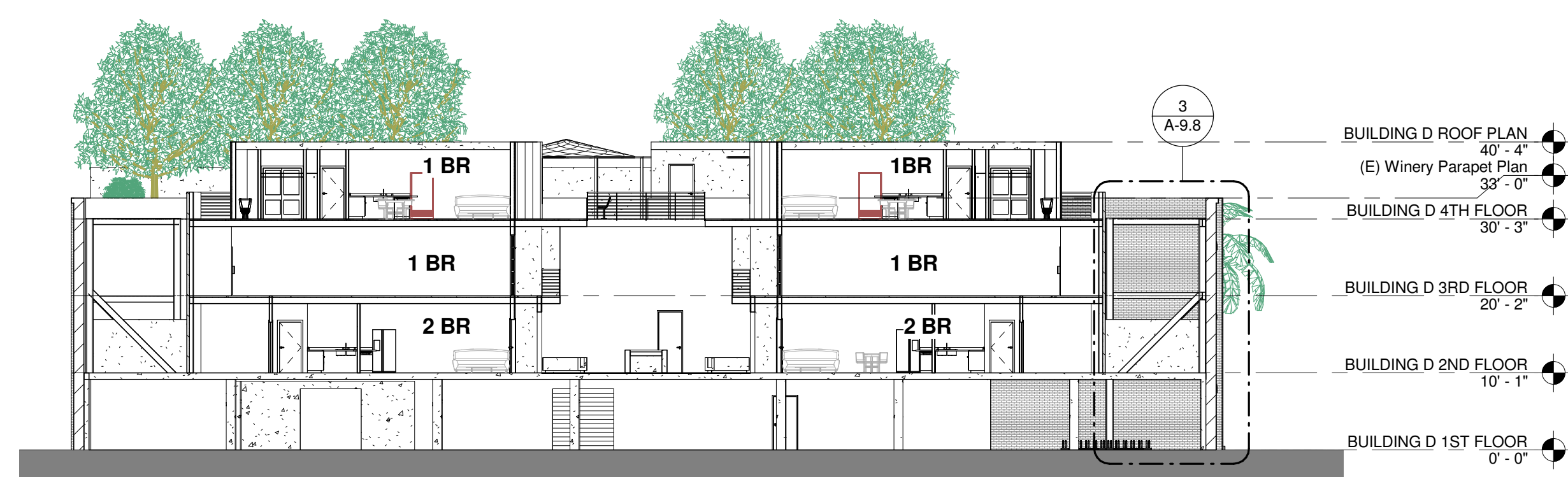
FIGURE A

NOTE : ADHESIVE ANCHORS OR ARCHITECTURALLY COMPATIBLE WASHER PLATES WITH PLANNING DEPARTMENT APPROVAL.

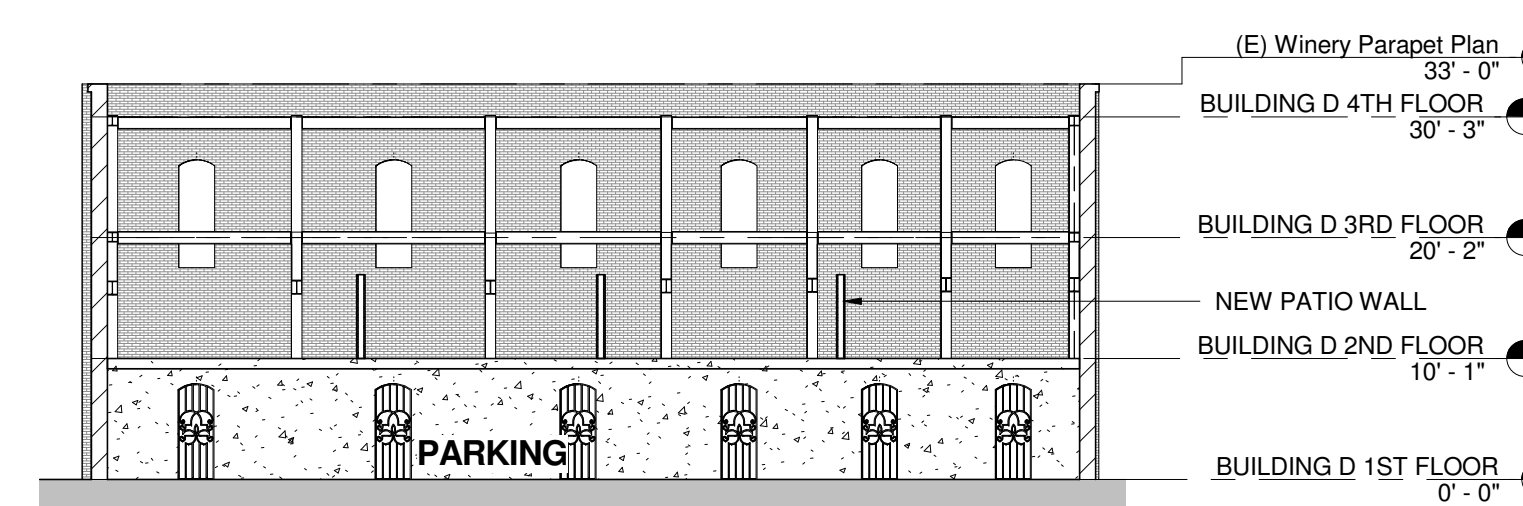


3	DETAIL @ EXISTING WALL 1/4" = 1'-0"
---	--

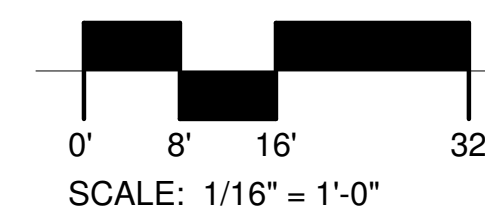
4	SUPPORT @ (E) WALL 1" = 1'-0"
---	----------------------------------



1	BUILDING D SECTION @ EXISTING BUILDING
---	--



2	SECTION AT (E) WINERY BUILDING 1/16" = 1'-0"
---	---



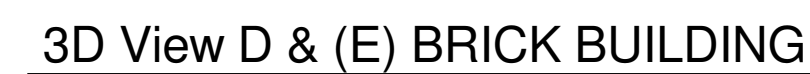




### 3D View 2



3D View BLDG.D Donahue &amp; 9th



### 3D View @ PODIUM



## CONSULTANTS

SEAL

Railroad Square  
Village, LLC

## DeTurk Winery Village Apartments

806 Donahue Street/ 8 West 9th Street  
Santa Rosa, CA 95401

[illegible]

DATE:	10/24/16
PROJECT NUMBER:	15-043
PROJECT PHASE:	SD
DRAWN BY:	Author
CHECKED BY:	Checker

SHEET TITLE

## BUILDING "D" 3D-IMAGES

SHEET NUMBER

A-9.9