



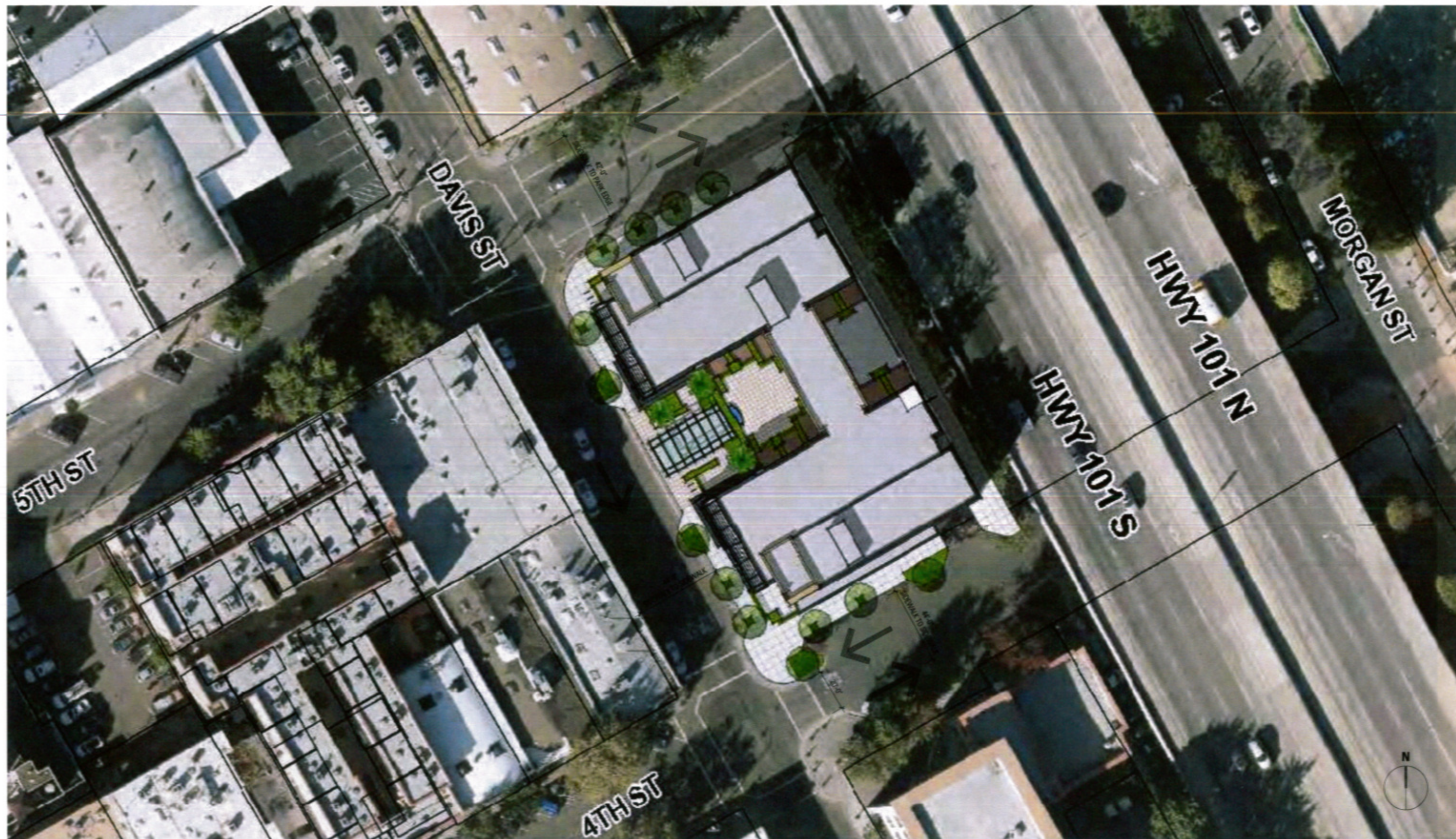
AC HOTEL BY MARRIOTT - SANTA ROSA

PRELIMINARY
DESIGN REVIEW SUBMITTAL

BAR ARCHITECTS

10.20.2016

City of Santa Rosa
FEB 01 2017
Planning & Economic
Development Department



* ABOVE AERIAL PHOTO AND PARCEL BOUNDARIES OBTAINED FROM CITY OF SANTA ROSA - PUBLIC GIS VIEWER.
* DIMENSIONS NOTED ARE TAKEN FROM ABOVE MENTIONED GIS VIEWER FOR REFERENCE PURPOSES ONLY.

AC HOTEL BY MARRIOTT | SANTA ROSA

SITE PLAN

BARarchitects

901 Battery Street, Suite 300 | San Francisco, CA 94111 | 415 293 5700 | www.bararch.com

16012

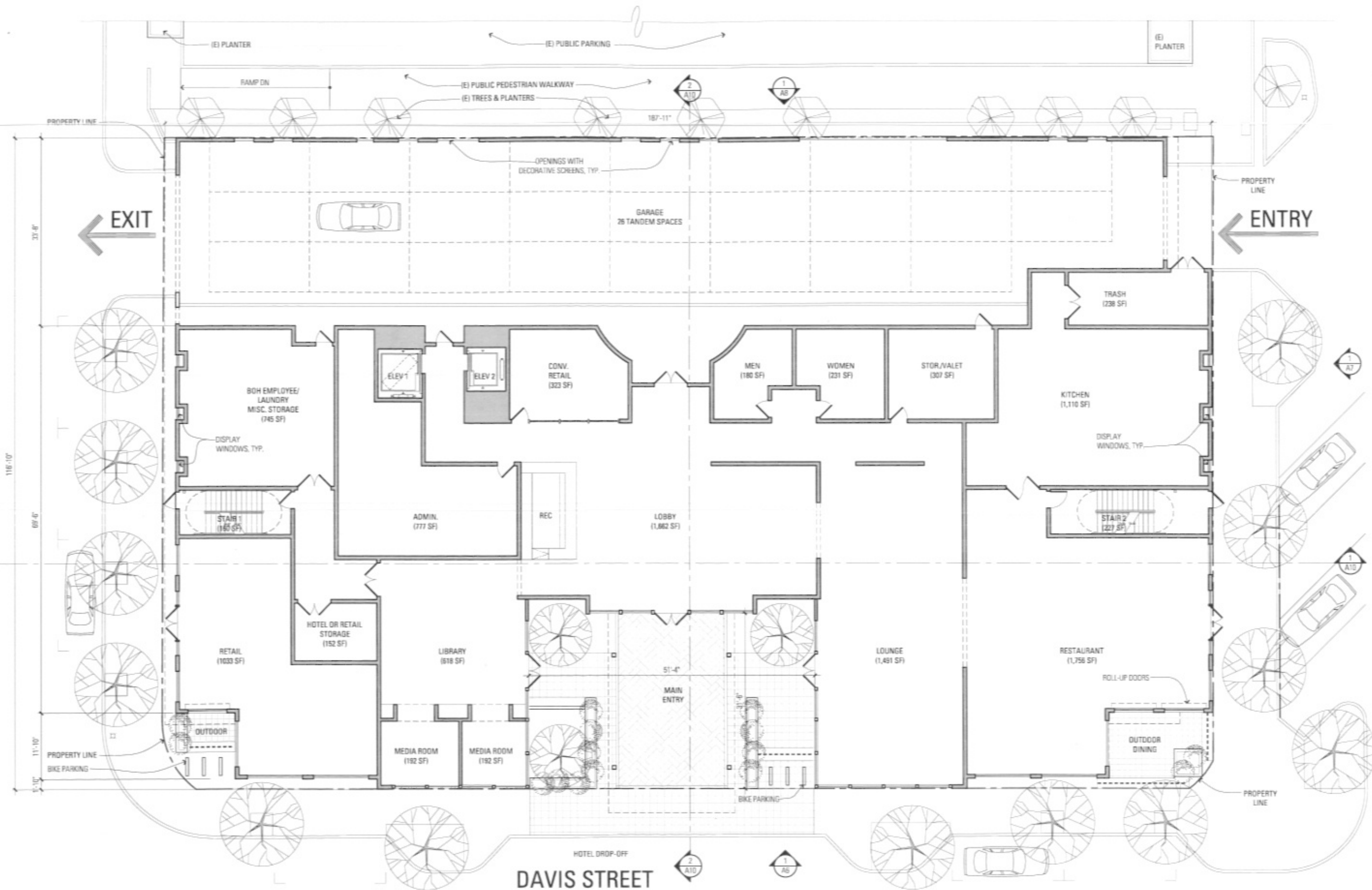
10.20.2016

SCALE = 1:600

A2

5TH STREET

4TH STREET



AC HOTEL BY MARRIOTT | SANTA ROSA

SITE & GROUND FLOOR PLAN



SECOND FLOOR PLAN (3F & 4F SIM.)

**BAR**architects

A5



EXTERIOR ELEVATION



EXTERIOR ELEVATION



EXTERIOR ELEVATION



EXTERIOR ELEVATION



BUILDING SECTIONS



AC HOTEL BY MARRIOTT | SANTA ROSA

MASSING MODEL PERSPECTIVES



VIEW PERSPECTIVE - ENTRY VIEW

**BAR**architects

A13

**BAR**architects

A14



AC HOTEL BY MARRIOTT | SANTA ROSA

VIEW PERSPECTIVE - ALONG FREEWAY 101 (WITHOUT TREES)

BARarchitects

901 Battery Street, Suite 300 | San Francisco, CA 94111 | 415.293.5700 | www.bararch.com

16012

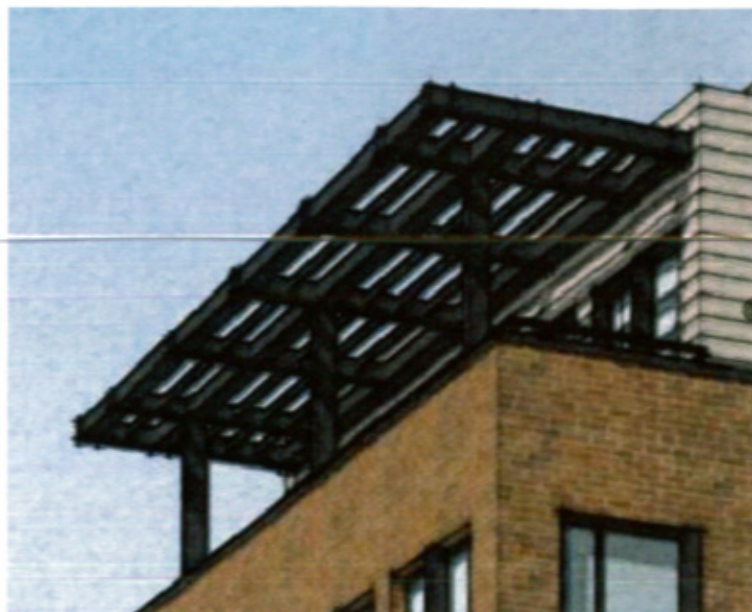
10.20.2016

A15



AC HOTEL BY MARRIOTT | SANTA ROSA

VIEW PERSPECTIVE - ALONG FREEWAY 101 (WITH TREES)



TRELLIS / CANOPY (AT PROJECT)



TRELLIS / CANOPY CONCEPT



ARTISTIC SCREEN CONCEPT



BRICK FACADE



BRICK TEXTURE



RETAIL STOREFRONT



ARTISTIC CANOPY CONCEPT



ROLL-UP DOORS AT RESTAURANT (AT PROJECT)

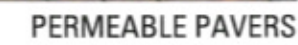
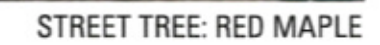
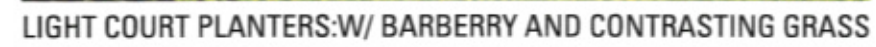


ROLL-UP DOORS AT RESTAURANT

AC HOTEL BY MARRIOTT

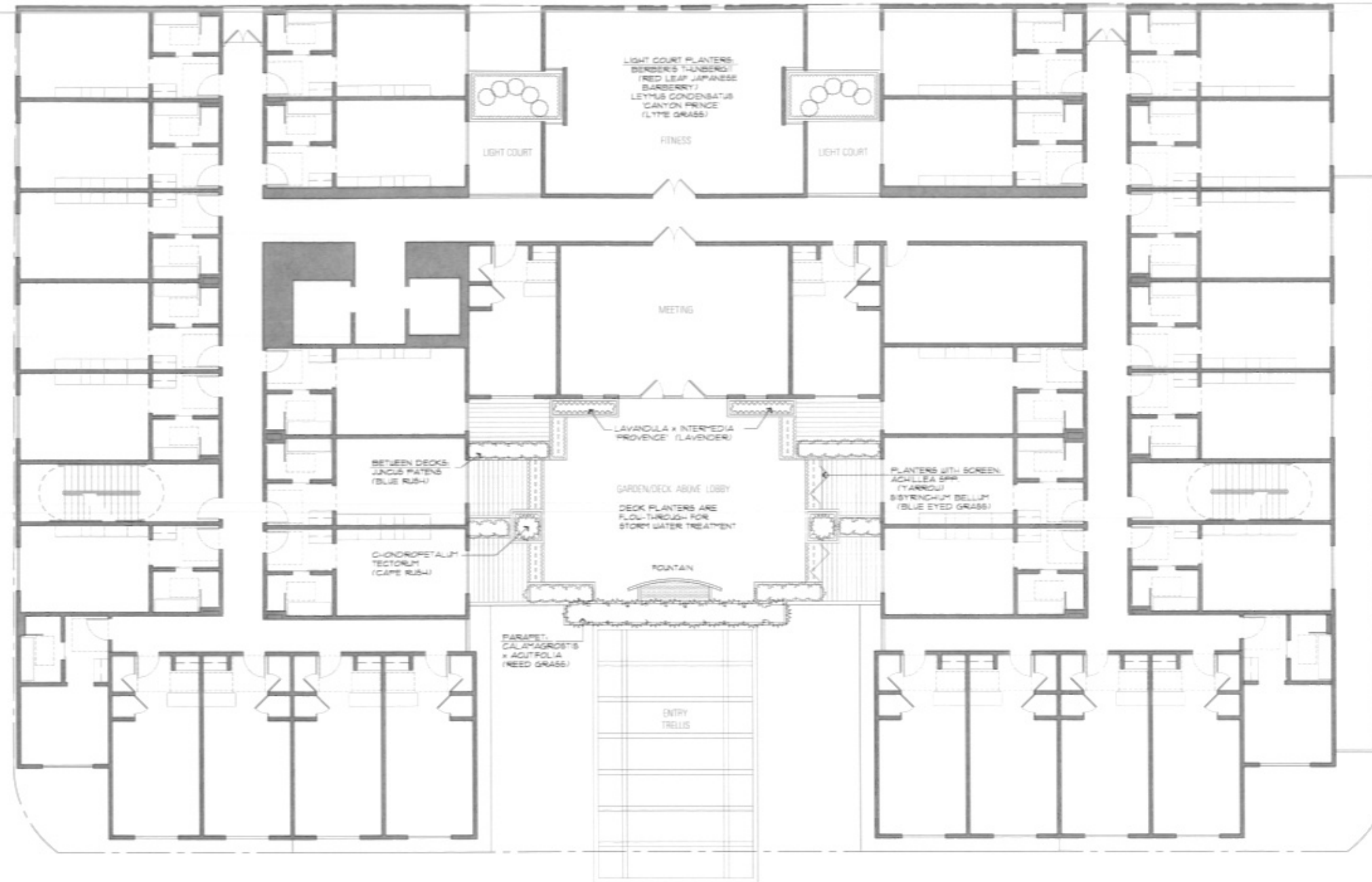
SANTA ROSA

ARCHITECTURAL ELEMENT IMAGERY



LANDSCAPE IMAGERY





AC HOTEL

SANTA ROSA

SECOND LEVEL LANDSCAPE PLAN

BARarchitects

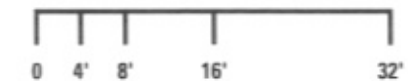
901 Battery Street, Suite 300 | San Francisco, CA 94111 | 415 293 5700 | www.bararch.com



Stephanie McAllister Landscape Architecture
145 Keller Street Petaluma, CA 94952 707.778.7693

16012

09.30.2016



L2