

Appendix B: Biological Resources Supporting Information

THIS PAGE INTENTIONALLY LEFT BLANK

B.1 - CNPS, CNDDDB, and USFWS Inventory Results

THIS PAGE INTENTIONALLY LEFT BLANK

Plant List

183 matches found. *Click on scientific name for details*

Search Criteria

Found in Sonoma County

Scientific Name	Common Name	Family	Lifeform	Rare Plant Rank	State Rank	Global Rank
<u>Abronia umbellata var. breviflora</u>	pink sand-verbena	Nyctaginaceae	perennial herb	1B.1	S1	G4G5T2
<u>Agrostis blasdalei</u>	Blasdale's bent grass	Poaceae	perennial rhizomatous herb	1B.2	S2	G2
<u>Allium peninsulare var. franciscanum</u>	Franciscan onion	Alliaceae	perennial bulbiferous herb	1B.2	S1	G5T1
<u>Alopecurus aequalis var. sonomensis</u>	Sonoma alopecurus	Poaceae	perennial herb	1B.1	S1	G5T1
<u>Amorpha californica var. napensis</u>	Napa false indigo	Fabaceae	perennial deciduous shrub	1B.2	S2	G4T2
<u>Amsinckia lunaris</u>	bent-flowered fiddleneck	Boraginaceae	annual herb	1B.2	S2S3	G2G3
<u>Anomobryum julaceum</u>	slender silver moss	Bryaceae	moss	4.2	S2	G5?
<u>Antirrhinum virga</u>	twig-like snapdragon	Plantaginaceae	perennial herb	4.3	S3S4	G3G4
<u>Arabis blepharophylla</u>	coast rockcress	Brassicaceae	perennial herb	4.3	S4	G4
<u>Arctostaphylos bakeri ssp. bakeri</u>	Baker's manzanita	Ericaceae	perennial evergreen shrub	1B.1	S1	G2T1
<u>Arctostaphylos bakeri ssp. sublaevis</u>	The Cedars manzanita	Ericaceae	perennial evergreen shrub	1B.2	S2	G2T2
<u>Arctostaphylos densiflora</u>	Vine Hill manzanita	Ericaceae	perennial evergreen shrub	1B.1	S1	G1
<u>Arctostaphylos hispidula</u>	Howell's manzanita	Ericaceae	perennial evergreen shrub	4.2	S3	G4
<u>Arctostaphylos manzanita ssp. elegans</u>	Konocti manzanita	Ericaceae	perennial evergreen shrub	1B.3	S3	G5T3
<u>Arctostaphylos stanfordiana ssp. decumbens</u>	Rincon Ridge manzanita	Ericaceae	perennial evergreen shrub	1B.1	S1	G3T1
<u>Asclepias solanoana</u>	serpentine milkweed	Apocynaceae	perennial herb	4.2	S3	G3
<u>Astragalus breweri</u>	Brewer's milk-vetch	Fabaceae	annual herb	4.2	S3	G3
<u>Astragalus claranus</u>	Clara Hunt's milk-vetch	Fabaceae	annual herb	1B.1	S1	G1
<u>Astragalus clevelandii</u>	Cleveland's milk-vetch	Fabaceae	perennial herb	4.3	S4	G4
<u>Astragalus rattanii var. jepsonianus</u>	Jepson's milk-vetch	Fabaceae	annual herb	1B.2	S3	G4T3
<u>Astragalus rattanii var. rattanii</u>	Rattan's milk-vetch	Fabaceae	perennial herb	4.3	S4	G4T4

<u>Astragalus tener var. tener</u>	alkali milk-vetch	Fabaceae	annual herb	1B.2	S2	G2T2
<u>Balsamorhiza macrolepis</u>	big-scale balsamroot	Asteraceae	perennial herb	1B.2	S2	G2
<u>Blennosperma bakeri</u>	Sonoma sunshine	Asteraceae	annual herb	1B.1	S1	G1
<u>Brodiaea leptandra</u>	narrow-anthered brodiaea	Themidaceae	perennial bulbiferous herb	1B.2	S3?	G3?
<u>Bryoria spiralis</u>	twisted horsehair lichen	Parmeliaceae	fruticose lichen (epiphytic)	1B.1	S1S2	G3
<u>Calamagrostis bolanderi</u>	Bolander's reed grass	Poaceae	perennial rhizomatous herb	4.2	S4	G4
<u>Calamagrostis crassiglumis</u>	Thurber's reed grass	Poaceae	perennial rhizomatous herb	2B.1	S2	G3Q
<u>Calamagrostis ophitidis</u>	serpentine reed grass	Poaceae	perennial herb	4.3	S3	G3
<u>Calandrinia breweri</u>	Brewer's calandrinia	Montiaceae	annual herb	4.2	S4	G4
<u>California macrophylla</u>	round-leaved filaree	Geraniaceae	annual herb	1B.2	S3?	G3?
<u>Calochortus raichei</u>	The Cedars fairy-lantern	Liliaceae	perennial bulbiferous herb	1B.2	S2	G2
<u>Calochortus uniflorus</u>	pink star-tulip	Liliaceae	perennial bulbiferous herb	4.2	S4	G4
<u>Calyptridium quadripetalum</u>	four-petaled pussypaws	Montiaceae	annual herb	4.3	S4	G4
<u>Calystegia collina ssp. oxyphylla</u>	Mt. Saint Helena morning-glory	Convolvulaceae	perennial rhizomatous herb	4.2	S3	G4T3
<u>Calystegia purpurata ssp. saxicola</u>	coastal bluff morning-glory	Convolvulaceae	perennial herb	1B.2	S2S3	G4T2T3
<u>Campanula californica</u>	swamp harebell	Campanulaceae	perennial rhizomatous herb	1B.2	S3	G3
<u>Carex buxbaumii</u>	Buxbaum's sedge	Cyperaceae	perennial rhizomatous herb	4.2	S3	G5
<u>Carex comosa</u>	bristly sedge	Cyperaceae	perennial rhizomatous herb	2B.1	S2	G5
<u>Carex saliniformis</u>	deceiving sedge	Cyperaceae	perennial rhizomatous herb	1B.2	S2	G2
<u>Castilleja ambigua var. ambigua</u>	johnny-nip	Orobanchaceae	annual herb (hemiparasitic)	4.2	S4	G4T5
<u>Castilleja uliginosa</u>	Pitkin Marsh paintbrush	Orobanchaceae	perennial herb (hemiparasitic)	1A	SX	GXQ
<u>Ceanothus confusus</u>	Rincon Ridge ceanothus	Rhamnaceae	perennial evergreen shrub	1B.1	S1	G1
<u>Ceanothus divergens</u>	Calistoga ceanothus	Rhamnaceae	perennial evergreen shrub	1B.2	S2	G2
<u>Ceanothus foliosus var. vineatus</u>	Vine Hill ceanothus	Rhamnaceae	perennial evergreen shrub	1B.1	S1	G3T1
<u>Ceanothus gloriosus var. exaltatus</u>	glory brush	Rhamnaceae	perennial evergreen shrub	4.3	S4	G4T4
<u>Ceanothus gloriosus var. gloriosus</u>	Point Reyes ceanothus	Rhamnaceae	perennial evergreen shrub	4.3	S4	G4T4
<u>Ceanothus purpureus</u>	holly-leaved ceanothus	Rhamnaceae	perennial evergreen shrub	1B.2	S2	G2
<u>Ceanothus sonomensis</u>	Sonoma ceanothus	Rhamnaceae	perennial evergreen shrub	1B.2	S2	G2
<u>Centromadia parryi ssp. parryi</u>	pappose tarplant	Asteraceae	annual herb	1B.2	S2	G3T2
<u>Chlorogalum pomeridianum var. minus</u>	dwarf soaproot	Agavaceae	perennial bulbiferous herb	1B.2	S2S3	G5T2T3
<u>Chloropyron maritimum ssp. palustre</u>	Point Reyes bird's-beak	Orobanchaceae	annual herb (hemiparasitic)	1B.2	S2	G4?T2
<u>Chloropyron molle ssp. molle</u>	soft bird's-beak	Orobanchaceae	annual herb (hemiparasitic)	1B.2	S1	G2T1
<u>Chorizanthe cuspidata var. cuspidata</u>	San Francisco Bay spineflower	Polygonaceae	annual herb	1B.2	S1	G2T1

<u>Chorizanthe cuspidata var. villosa</u>	woolly-headed spineflower	Polygonaceae	annual herb	1B.2	S2	G2T2
<u>Chorizanthe valida</u>	Sonoma spineflower	Polygonaceae	annual herb	1B.1	S1	G1
<u>Cirsium andrewsii</u>	Franciscan thistle	Asteraceae	perennial herb	1B.2	S3	G3
<u>Clarkia imbricata</u>	Vine Hill clarkia	Onagraceae	annual herb	1B.1	S1	G1
<u>Collinsia corymbosa</u>	round-headed Chinese-houses	Plantaginaceae	annual herb	1B.2	S1	G1
<u>Cordylanthus tenuis ssp. brunneus</u>	serpentine bird's-beak	Orobanchaceae	annual herb (hemiparasitic)	4.3	S3	G4G5T3
<u>Cordylanthus tenuis ssp. capillaris</u>	Pennell's bird's-beak	Orobanchaceae	annual herb (hemiparasitic)	1B.2	S1	G4G5T1
<u>Cryptantha dissita</u>	serpentine cryptantha	Boraginaceae	annual herb	1B.2	S2	G2
<u>Cuscuta obtusiflora var. glandulosa</u>	Peruvian dodder	Convolvulaceae	annual vine (parasitic)	2B.2	SH	G5T4T5
<u>Cuscuta pacifica var. papillata</u>	Mendocino dodder	Convolvulaceae	annual vine (parasitic)	1B.2	S1	G5T1
<u>Cypripedium californicum</u>	California lady's-slipper	Orchidaceae	perennial rhizomatous herb	4.2	S4	G4
<u>Cypripedium montanum</u>	mountain lady's-slipper	Orchidaceae	perennial rhizomatous herb	4.2	S4	G4
<u>Delphinium bakeri</u>	Baker's larkspur	Ranunculaceae	perennial herb	1B.1	S1	G1
<u>Delphinium luteum</u>	golden larkspur	Ranunculaceae	perennial herb	1B.1	S1	G1
<u>Dirca occidentalis</u>	western leatherwood	Thymelaeaceae	perennial deciduous shrub	1B.2	S2	G2
<u>Downingia pusilla</u>	dwarf downingia	Campanulaceae	annual herb	2B.2	S2	GU
<u>Eleocharis parvula</u>	small spikerush	Cyperaceae	perennial herb	4.3	S4	G5
<u>Elymus californicus</u>	California bottle-brush grass	Poaceae	perennial herb	4.3	S4	G4
<u>Erigeron biolettii</u>	streamside daisy	Asteraceae	perennial herb	3	S3?	G3?
<u>Erigeron greenei</u>	Greene's narrow-leaved daisy	Asteraceae	perennial herb	1B.2	S3	G3
<u>Erigeron serpentinus</u>	serpentine daisy	Asteraceae	perennial herb	1B.3	S2	G2
<u>Erigeron supplex</u>	supple daisy	Asteraceae	perennial herb	1B.2	S2	G2
<u>Eriogonum cedrorum</u>	The Cedars buckwheat	Polygonaceae	perennial herb	1B.3	S1	G1
<u>Eriogonum luteolum var. caninum</u>	Tiburon buckwheat	Polygonaceae	annual herb	1B.2	S2	G5T2
<u>Eriogonum nervulosum</u>	Snow Mountain buckwheat	Polygonaceae	perennial rhizomatous herb	1B.2	S2	G2
<u>Eriogonum ternatum</u>	ternate buckwheat	Polygonaceae	perennial herb	4.3	S4	G4
<u>Eriophorum gracile</u>	slender cottongrass	Cyperaceae	perennial rhizomatous herb	4.3	S4	G5
<u>Eryngium constancei</u>	Loch Lomond button-celery	Apiaceae	annual / perennial herb	1B.1	S1	G1
<u>Eryngium pinnatisectum</u>	Tuolumne button-celery	Apiaceae	annual / perennial herb	1B.2	S2	G2
<u>Erysimum concinnum</u>	bluff wallflower	Brassicaceae	annual / perennial herb	1B.2	S3	G3
<u>Erysimum franciscanum</u>	San Francisco wallflower	Brassicaceae	perennial herb	4.2	S3	G3
<u>Erythronium helenae</u>	St. Helena fawn lily	Liliaceae	perennial bulbiferous herb	4.2	S3	G3
<u>Erythronium revolutum</u>	coast fawn lily	Liliaceae	perennial bulbiferous herb	2B.2	S3	G4G5

<u>Fissidens pauperculus</u>	minute pocket moss	Fissidentaceae	moss	1B.2	S2	G3?
<u>Fritillaria liliacea</u>	fragrant fritillary	Liliaceae	perennial bulbiferous herb	1B.2	S2	G2
<u>Fritillaria roderickii</u>	Roderick's fritillary	Liliaceae	perennial bulbiferous herb	1B.1	S1	G1Q
<u>Gilia capitata ssp. chamissonis</u>	blue coast gilia	Polemoniaceae	annual herb	1B.1	S2	G5T2
<u>Gilia capitata ssp. pacifica</u>	Pacific gilia	Polemoniaceae	annual herb	1B.2	S2	G5T3
<u>Gilia capitata ssp. tomentosa</u>	woolly-headed gilia	Polemoniaceae	annual herb	1B.1	S2	G5T2
<u>Gilia millefoliata</u>	dark-eyed gilia	Polemoniaceae	annual herb	1B.2	S2	G2
<u>Gratiola heterosepala</u>	Boggs Lake hedge-hyssop	Plantaginaceae	annual herb	1B.2	S2	G2
<u>Harmonia nutans</u>	nodding harmonia	Asteraceae	annual herb	4.3	S3	G3
<u>Helianthus exilis</u>	serpentine sunflower	Asteraceae	annual herb	4.2	S3	G3Q
<u>Hemizonia congesta ssp. congesta</u>	congested-headed hayfield tarplant	Asteraceae	annual herb	1B.2	S1S2	G5T1T2
<u>Hesperevax sparsiflora var. brevifolia</u>	short-leaved evax	Asteraceae	annual herb	1B.2	S2	G4T3
<u>Hesperocyparis pygmaea</u>	pygmy cypress	Cupressaceae	perennial evergreen tree	1B.2	S1	G1
<u>Hesperolinon bicarpellatum</u>	two-carpellate western flax	Linaceae	annual herb	1B.2	S3	G3
<u>Horkelia marinensis</u>	Point Reyes horkelia	Rosaceae	perennial herb	1B.2	S2	G2
<u>Horkelia tenuiloba</u>	thin-lobed horkelia	Rosaceae	perennial herb	1B.2	S2	G2
<u>Hosackia gracilis</u>	harlequin lotus	Fabaceae	perennial rhizomatous herb	4.2	S3	G4
<u>Iris longipetala</u>	coast iris	Iridaceae	perennial rhizomatous herb	4.2	S3	G3
<u>Kopsiopsis hookeri</u>	small groundcone	Orobanchaceae	perennial rhizomatous herb (parasitic)	2B.3	S1S2	G4?
<u>Lasthenia burkei</u>	Burke's goldfields	Asteraceae	annual herb	1B.1	S1	G1
<u>Lasthenia californica ssp. bakeri</u>	Baker's goldfields	Asteraceae	perennial herb	1B.2	SH	G3TH
<u>Lasthenia californica ssp. macrantha</u>	perennial goldfields	Asteraceae	perennial herb	1B.2	S2	G3T2
<u>Lasthenia conjugens</u>	Contra Costa goldfields	Asteraceae	annual herb	1B.1	S1	G1
<u>Lathyrus jepsonii var. jepsonii</u>	Delta tule pea	Fabaceae	perennial herb	1B.2	S2	G5T2
<u>Lathyrus palustris</u>	marsh pea	Fabaceae	perennial herb	2B.2	S2	G5
<u>Layia septentrionalis</u>	Colusa layia	Asteraceae	annual herb	1B.2	S2	G2
<u>Legenere limosa</u>	legenere	Campanulaceae	annual herb	1B.1	S2	G2
<u>Leptosiphon acicularis</u>	bristly leptosiphon	Polemoniaceae	annual herb	4.2	S3	G3
<u>Leptosiphon grandiflorus</u>	large-flowered leptosiphon	Polemoniaceae	annual herb	4.2	S3	G3
<u>Leptosiphon jepsonii</u>	Jepson's leptosiphon	Polemoniaceae	annual herb	1B.2	S3	G3
<u>Leptosiphon latisectus</u>	broad-lobed leptosiphon	Polemoniaceae	annual herb	4.3	S4	G4
<u>Leptosiphon rosaceus</u>	rose leptosiphon	Polemoniaceae	annual herb	1B.1	S1	G1

<u>Lessingia arachnoidea</u>	Crystal Springs lessingia	Asteraceae	annual herb	1B.2	S2	G2
<u>Lessingia hololeuca</u>	woolly-headed lessingia	Asteraceae	annual herb	3	S3?	G3?
<u>Lilium maritimum</u>	coast lily	Liliaceae	perennial bulbiferous herb	1B.1	S2	G2
<u>Lilium pardalinum ssp. pitkinense</u>	Pitkin Marsh lily	Liliaceae	perennial bulbiferous herb	1B.1	S1	G5T1
<u>Lilium rubescens</u>	redwood lily	Liliaceae	perennial bulbiferous herb	4.2	S3	G3
<u>Limnanthes vinculans</u>	Sebastopol meadowfoam	Limnanthaceae	annual herb	1B.1	S1	G1
<u>Lomatium repostum</u>	Napa lomatium	Apiaceae	perennial herb	4.3	S3	G3
<u>Lupinus arboreus var. eximius</u>	San Mateo tree lupine	Fabaceae	perennial evergreen shrub	3.2	S2	G2Q
<u>Lupinus sericatus</u>	Cobb Mountain lupine	Fabaceae	perennial herb	1B.2	S2	G2
<u>Lupinus tirstromii</u>	Tidestrom's lupine	Fabaceae	perennial rhizomatous herb	1B.1	S1	G1
<u>Lycopodium clavatum</u>	running-pine	Lycopodiaceae	perennial rhizomatous herb	4.1	S3	G5
<u>Micropus amphibolus</u>	Mt. Diablo cottonweed	Asteraceae	annual herb	3.2	S3S4	G3G4
<u>Microseris paludosa</u>	marsh microseris	Asteraceae	perennial herb	1B.2	S2	G2
<u>Monardella viridis</u>	green monardella	Lamiaceae	perennial rhizomatous herb	4.3	S4	G4
<u>Navarretia cotulifolia</u>	cotula navarretia	Polemoniaceae	annual herb	4.2	S4	G4
<u>Navarretia leucocephala ssp. bakeri</u>	Baker's navarretia	Polemoniaceae	annual herb	1B.1	S2	G4T2
<u>Navarretia leucocephala ssp. plieantha</u>	many-flowered navarretia	Polemoniaceae	annual herb	1B.2	S1	G4T1
<u>Orobanche valida ssp. howellii</u>	Howell's broomrape	Orobanchaceae	perennial herb (parasitic)	4.3	S4	G4T4
<u>Panicum acuminatum var. thermale</u>	Geysers panicum	Poaceae	annual / perennial herb	1B.2	S2	G5T2Q
<u>Penstemon newberryi var. sonomensis</u>	Sonoma beardtongue	Plantaginaceae	perennial herb	1B.3	S2	G4T2
<u>Perideridia gairdneri ssp. gairdneri</u>	Gairdner's yampah	Apiaceae	perennial herb	4.2	S4	G5T4
<u>Piperia candida</u>	white-flowered rein orchid	Orchidaceae	perennial herb	1B.2	S3	G3
<u>Piperia leptopetala</u>	narrow-petaled rein orchid	Orchidaceae	perennial herb	4.3	S4	G4
<u>Pityopus californicus</u>	California pinefoot	Ericaceae	perennial herb (achlorophyllous)	4.2	S4	G4G5
<u>Plagiobothrys mollis var. vestitus</u>	Petaluma popcornflower	Boraginaceae	perennial herb	1A	SX	G4?TX
<u>Pleuropogon hooverianus</u>	North Coast semaphore grass	Poaceae	perennial rhizomatous herb	1B.1	S2	G2
<u>Polemonium carneum</u>	Oregon polemonium	Polemoniaceae	perennial herb	2B.2	S2	G3G4
<u>Polygonum marinense</u>	Marin knotweed	Polygonaceae	annual herb	3.1	S2	G2Q
<u>Potentilla hickmanii</u>	Hickman's cinquefoil	Rosaceae	perennial herb	1B.1	S1	G1
<u>Potentilla uliginosa</u>	Cunningham Marsh cinquefoil	Rosaceae	perennial herb	1A	SH	GH
<u>Ramalina thrausta</u>	angel's hair lichen	Ramalinaceae	fruticose lichen (epiphytic)	2B.1	S2?	G5
<u>Ranunculus lobbii</u>	Lobb's aquatic buttercup	Ranunculaceae	annual herb	4.2	S3	G4
<u>Rhynchospora alba</u>	white beaked-rush	Cyperaceae	perennial rhizomatous herb	2B.2	S2	G5

<u>Rhynchospora californica</u>	California beaked-rush	Cyperaceae	perennial rhizomatous herb	1B.1	S1	G1
<u>Rhynchospora capitellata</u>	brownish beaked-rush	Cyperaceae	perennial herb	2B.2	S1	G5
<u>Rhynchospora globularis</u>	round-headed beaked-rush	Cyperaceae	perennial rhizomatous herb	2B.1	S1	G5
<u>Ribes victoris</u>	Victor's gooseberry	Grossulariaceae	perennial deciduous shrub	4.3	S4	G4
<u>Sidalcea calycosa ssp. rhizomata</u>	Point Reyes checkerbloom	Malvaceae	perennial rhizomatous herb	1B.2	S2	G5T2
<u>Sidalcea hickmanii ssp. napensis</u>	Napa checkerbloom	Malvaceae	perennial herb	1B.1	S1	G3T1
<u>Sidalcea hickmanii ssp. viridis</u>	Marin checkerbloom	Malvaceae	perennial herb	1B.3	S1S2	G3T1T2
<u>Sidalcea malachroides</u>	maple-leaved checkerbloom	Malvaceae	perennial herb	4.2	S3	G3
<u>Sidalcea malviflora ssp. purpurea</u>	purple-stemmed checkerbloom	Malvaceae	perennial rhizomatous herb	1B.2	S1	G5T1
<u>Sidalcea oregana ssp. valida</u>	Kenwood Marsh checkerbloom	Malvaceae	perennial rhizomatous herb	1B.1	S1	G5T1
<u>Stellaria littoralis</u>	beach starwort	Caryophyllaceae	perennial rhizomatous herb	4.2	S3	G3
<u>Streptanthus barbiger</u>	bearded jewelflower	Brassicaceae	annual herb	4.2	S3	G3
<u>Streptanthus brachiatus ssp. brachiatus</u>	Socrates Mine jewelflower	Brassicaceae	perennial herb	1B.2	S1	G2T1
<u>Streptanthus brachiatus ssp. hoffmanii</u>	Freed's jewelflower	Brassicaceae	perennial herb	1B.2	S2	G2T2
<u>Streptanthus glandulosus ssp. hoffmanii</u>	Hoffman's bristly jewelflower	Brassicaceae	annual herb	1B.3	S2	G4T2
<u>Streptanthus hesperidis</u>	green jewelflower	Brassicaceae	annual herb	1B.2	S2	G2
<u>Streptanthus morrisonii ssp. elatus</u>	Three Peaks jewelflower	Brassicaceae	perennial herb	1B.2	S2	G2T2
<u>Streptanthus morrisonii ssp. hirtiflorus</u>	Dorr's Cabin jewelflower	Brassicaceae	perennial herb	1B.2	S1	G2T1
<u>Streptanthus morrisonii ssp. kruckebergii</u>	Kruckeberg's jewelflower	Brassicaceae	perennial herb	1B.2	S1	G2T1
<u>Streptanthus morrisonii ssp. morrisonii</u>	Morrison's jewelflower	Brassicaceae	perennial herb	1B.2	S2	G2T2
<u>Stuckenia filiformis ssp. alpina</u>	slender-leaved pondweed	Potamogetonaceae	perennial rhizomatous herb	2B.2	S3	G5T5
<u>Toxicoscordion fontanum</u>	marsh zigadenus	Melanthiaceae	perennial bulbiferous herb	4.2	S3	G3
<u>Tracyina rostrata</u>	beaked tracyina	Asteraceae	annual herb	1B.2	S1	G1
<u>Trifolium amoenum</u>	two-fork clover	Fabaceae	annual herb	1B.1	S1	G1
<u>Trifolium buckwestiorum</u>	Santa Cruz clover	Fabaceae	annual herb	1B.1	S2	G2
<u>Trifolium hydrophilum</u>	saline clover	Fabaceae	annual herb	1B.2	S2	G2
<u>Triquetrella californica</u>	coastal triquetrella	Pottiaceae	moss	1B.2	S2	G2
<u>Triteleia lugens</u>	dark-mouthed triteleia	Themidaceae	perennial bulbiferous herb	4.3	S4?	G4?
<u>Usnea longissima</u>	Methuselah's beard lichen	Parmeliaceae	fruticose lichen (epiphytic)	4.2	S4	G4
<u>Veratrum fimbriatum</u>	fringed false-hellebore	Melanthiaceae	perennial herb	4.3	S3	G3
<u>Viburnum ellipticum</u>	oval-leaved viburnum	Adoxaceae	perennial deciduous shrub	2B.3	S3?	G4G5

Suggested Citation

CNPS, Rare Plant Program. 2016. Inventory of Rare and Endangered Plants (online edition, v8-02). California Native Plant Society, Sacramento, CA. Website <http://www.rareplants.cnps.org> [accessed 29 September 2016].

Search the Inventory[Simple Search](#)[Advanced Search](#)[Glossary](#)**Information**[About the Inventory](#)[About the Rare Plant Program](#)[CNPS Home Page](#)[About CNPS](#)[Join CNPS](#)**Contributors**[The Calflora Database](#)[The California Lichen Society](#)

© Copyright 2010-2014 California Native Plant Society. All rights reserved.

CALIFORNIA DEPARTMENT OF
FISH and WILDLIFE *RareFind*

Query Summary:County **IS** (Sonoma)**AND** Quad **IS** (Mark West Springs (3812256) **OR** Santa Rosa (3812246) **OR** Sebastopol (3812247))

Print

Close

CNDDDB Element Query Results

Scientific Name	Common Name	Taxonomic Group	Element Code	Total Occs	Returned Occs	Federal Status	State Status	Global Rank	State Rank	CA Rare Plant Rank	Other Status	Habitats
Agelaius tricolor	tricolored blackbird	Birds	ABPBXB0020	838	1	None	None	G2G3	S1S2	null	BLM_S-Sensitive, CDFW_SSC-Species of Special Concern, IUCN_EN-Endangered, NABCI_RWL-Red Watch List, USFWS_BCC-Birds of Conservation Concern	Freshwater marsh, Marsh & swamp, Swamp, Wetland
Alopecurus aequalis var. sonomensis	Sonoma alopecurus	Monocots	PMPOA07012	21	2	Endangered	None	G5T1	S1	1B.1	SB_RSABG-Rancho Santa Ana Botanic Garden	Freshwater marsh, Marsh & swamp, Riparian scrub, Wetland
Ambystoma californiense	California tiger salamander	Amphibians	AAAAA01180	1145	51	Threatened	Threatened	G2G3	S2S3	null	CDFW_WL-Watch List, IUCN_VU-Vulnerable	Cismontane woodland, Meadow & seep, Riparian woodland, Valley & foothill grassland, Vernal pool, Wetland
Amorpha californica var. napensis	Napa false indigo	Dicots	PDFAB08012	69	9	None	None	G4T2	S2	1B.2	SB_RSABG-Rancho Santa Ana Botanic Garden	Broadleaved upland forest, Chaparral, Cismontane woodland
Amsinckia lunaris	bent-flowered fiddleneck	Dicots	PDBOR01070	64	1	None	None	G2G3	S2S3	1B.2	BLM_S-Sensitive	Cismontane woodland, Coastal bluff scrub, Valley & foothill grassland
Andrena blennospermatis	Blennosperma vernal pool andrenid bee	Insects	IIHYM35030	15	2	None	None	G2	S2	null	null	Vernal pool
Anomobryum julaceum	slender silver moss	Bryophytes	NBMUS80010	13	1	None	None	G5?	S2	4.2	null	Broadleaved upland forest, Lower montane coniferous forest, North coast coniferous forest
Antrozous pallidus	pallid bat	Mammals	AMACC10010	405	2	None	None	G5	S3	null	BLM_S-Sensitive, CDFW_SSC-Species of Special Concern, IUCN_LC-Least Concern, USFS_S-	Chaparral, Coastal scrub, Desert wash, Great Basin grassland, Great Basin scrub, Mojavean desert scrub, Riparian woodland, Sonoran desert scrub, Upper montane coniferous forest, Valley & foothill grassland

											Sensitive, WBWG_H- High Priority	
Arctostaphylos densiflora	Vine Hill manzanita	Dicots	PDERI040C0	2	2	None	Endangered	G1	S1	1B.1	null	Chaparral
Arctostaphylos stanfordiana ssp. decumbens	Rincon Ridge manzanita	Dicots	PDERI041G4	12	5	None	None	G3T1	S1	1B.1	null	Chaparral, Cismontane woodland
Astragalus claranus	Clara Hunt's milk-vetch	Dicots	PDFAB0F240	6	1	Endangered	Threatened	G1	S1	1B.1	SB_RSABG-Rancho Santa Ana Botanic Garden	Chaparral, Cismontane woodland, Valley & foothill grassland
Balsamorhiza macrolepis	big-scale balsamroot	Dicots	PDAST11061	43	2	None	None	G2	S2	1B.2	BLM_S-Sensitive, USFS_S-Sensitive	Chaparral, Cismontane woodland, Ultramafic, Valley & foothill grassland
Blennosperma bakeri	Sonoma sunshine	Dicots	PDAST1A010	25	16	Endangered	Endangered	G1	S1	1B.1	SB_RSABG-Rancho Santa Ana Botanic Garden	Valley & foothill grassland, Vernal pool, Wetland
Bombus caliginosus	obscure bumble bee	Insects	IIHYM24380	181	1	None	None	G4?	S1S2	null	IUCN_VU-Vulnerable	null
Bombus occidentalis	western bumble bee	Insects	IIHYM24250	282	1	None	None	G2G3	S1	null	USFS_S-Sensitive, XERCES_IM-Imperiled	null
Brodiaea leptandra	narrow-anthered brodiaea	Monocots	PMLIL0C022	39	6	None	None	G3?	S3?	1B.2	null	Broadleaved upland forest, Chaparral, Cismontane woodland, Lower montane coniferous forest, Valley & foothill grassland
Calamagrostis crassiglumis	Thurber's reed grass	Monocots	PMPOA17070	15	1	None	None	G3Q	S2	2B.1	null	Coastal scrub, Freshwater marsh, Marsh & swamp, Wetland
Calystegia collina ssp. oxyphylla	Mt. Saint Helena morning-glory	Dicots	PDCON04032	9	1	None	None	G4T3	S3	4.2	null	Chaparral, Lower montane coniferous forest, Ultramafic, Valley & foothill grassland
Campanula californica	swamp harebell	Dicots	PDCAM02060	132	2	None	None	G3	S3	1B.2	BLM_S-Sensitive	Bog & fen, Closed-cone coniferous forest, Coastal prairie, Marsh & swamp, Meadow & seep, North coast coniferous forest, Wetland
Castilleja uliginosa	Pitkin Marsh paintbrush	Dicots	PDSCR0D380	2	2	None	Endangered	GXQ	SX	1A	null	Freshwater marsh, Marsh & swamp, Wetland
Ceanothus confusus	Rincon Ridge ceanothus	Dicots	PDRHA04220	33	4	None	None	G1	S1	1B.1	BLM_S-Sensitive	Chaparral, Cismontane woodland, Closed-cone coniferous forest, Ultramafic
Ceanothus divergens	Calistoga ceanothus	Dicots	PDRHA04240	23	3	None	None	G2	S2	1B.2	BLM_S-Sensitive	Chaparral, Cismontane woodland, Ultramafic
Ceanothus foliosus var. vineatus	Vine Hill ceanothus	Dicots	PDRHA040D6	6	3	None	None	G3T1	S1	1B.1	null	Chaparral
Ceanothus purpureus	holly-leaved ceanothus	Dicots	PDRHA04160	43	2	None	None	G2	S2	1B.2	null	Chaparral, Cismontane woodland
Ceanothus somensis	Sonoma ceanothus	Dicots	PDRHA04420	30	1	None	None	G2	S2	1B.2	null	Chaparral, Ultramafic
Centromadia parryi ssp. parryi	pappose tarplant	Dicots	PDAST4R0P2	29	1	None	None	G3T2	S2	1B.2	BLM_S-Sensitive	Chaparral, Coastal prairie, Marsh & swamp, Meadow & seep, Valley & foothill grassland
Chorizanthe valida	Sonoma spineflower	Dicots	PDPGN040V0	6	1	Endangered	Endangered	G1	S1	1B.1	SB_RSABG-Rancho Santa Ana Botanic Garden	Coastal prairie
	Vine Hill										SB_RSABG-Rancho Santa	

Clarkia imbricata	clarkia	Dicots	PDONA050K0	3	3	Endangered	Endangered	G1	S1	1B.1	Ana Botanic Garden	Chaparral, Valley & foothill grassland
Coastal and Valley Freshwater Marsh	Coastal and Valley Freshwater Marsh	Marsh	CTT52410CA	60	1	None	None	G3	S2.1	null	null	Marsh & swamp, Wetland
Corynorhinus townsendii	Townsend's big-eared bat	Mammals	AMACC08010	624	1	None	Candidate Threatened	G3G4	S2	null	BLM_S-Sensitive, CDFW_SSC-Species of Special Concern, IUCN_LC-Least Concern, USFS_S-Sensitive, WBWG_H-High Priority	Broadleaved upland forest, Chaparral, Chenopod scrub, Great Basin grassland, Great Basin scrub, Joshua tree woodland, Lower montane coniferous forest, Meadow & seep, Mojavean desert scrub, Riparian forest, Riparian woodland, Sonoran desert scrub, Sonoran thorn woodland, Upper montane coniferous forest, Valley & foothill grassland
Cuscuta obtusiflora var. glandulosa	Peruvian dodder	Dicots	PDCUS01111	6	1	None	None	G5T4T5	SH	2B.2	null	Marsh & swamp, Wetland
Delphinium luteum	golden larkspur	Dicots	PDRAN0B0Z0	11	1	Endangered	Rare	G1	S1	1B.1	SB_UCBBG-UC Berkeley Botanical Garden	Chaparral, Coastal prairie, Coastal scrub
Dicamptodon ensatus	California giant salamander	Amphibians	AAAAH01020	227	6	None	None	G3	S2S3	null	CDFW_SSC-Species of Special Concern, IUCN_NT-Near Threatened	Aquatic, Meadow & seep, North coast coniferous forest, Riparian forest
Downingia pusilla	dwarf downingia	Dicots	PDCAM060C0	126	7	None	None	GU	S2	2B.2	null	Valley & foothill grassland, Vernal pool, Wetland
Elanus leucurus	white-tailed kite	Birds	ABNKC06010	162	1	None	None	G5	S3S4	null	BLM_S-Sensitive, CDFW_FP-Fully Protected, IUCN_LC-Least Concern	Cismontane woodland, Marsh & swamp, Riparian woodland, Valley & foothill grassland, Wetland
Emys marmorata	western pond turtle	Reptiles	ARAAD02030	1188	20	None	None	G3G4	S3	null	BLM_S-Sensitive, CDFW_SSC-Species of Special Concern, IUCN_VU-Vulnerable, USFS_S-Sensitive	Aquatic, Artificial flowing waters, Klamath/North coast flowing waters, Klamath/North coast standing waters, Marsh & swamp, Sacramento/San Joaquin flowing waters, Sacramento/San Joaquin standing waters, South coast flowing waters, South coast standing waters, Wetland
Fritillaria liliacea	fragrant fritillary	Monocots	PMLIL0V0C0	81	7	None	None	G2	S2	1B.2	USFS_S-Sensitive	Cismontane woodland, Coastal prairie, Coastal scrub, Ultramafic, Valley & foothill grassland
Gratiola heterosepala	Boggs Lake hedge-hyssop	Dicots	PDSCR0R060	94	1	None	Endangered	G2	S2	1B.2	BLM_S-Sensitive	Freshwater marsh, Marsh & swamp, Vernal pool, Wetland
Hemizonia congesta ssp. congesta	congested-headed hayfield tarplant	Dicots	PDAST4R065	33	8	None	None	G5T1T2	S1S2	1B.2	null	Valley & foothill grassland

Horkelia tenuiloba	thin-lobed horkelia	Dicots	PDROS0W0E0	27	3	None	None	G2	S2	1B.2	BLM_S-Sensitive, SB_RSABG-Rancho Santa Ana Botanic Garden	Broadleaved upland forest, Chaparral, Valley & foothill grassland
Lasiurus cinereus	hoary bat	Mammals	AMACC05030	235	1	None	None	G5	S4	null	IUCN_LC-Least Concern, WBWG_M-Medium Priority	Broadleaved upland forest, Cismontane woodland, Lower montane coniferous forest, North coast coniferous forest
Lasthenia burkei	Burke's goldfields	Dicots	PDAST5L010	34	21	Endangered	Endangered	G1	S1	1B.1	SB_RSABG-Rancho Santa Ana Botanic Garden	Meadow & seep, Vernal pool, Wetland
Lasthenia californica ssp. bakeri	Baker's goldfields	Dicots	PDAST5L0C4	14	1	None	None	G3TH	SH	1B.2	null	Closed-cone coniferous forest, Coastal scrub, Marsh & swamp, Meadow & seep
Lavinia symmetricus navarroensis	Navarro roach	Fish	AFCJB19023	4	1	None	None	G4T1T2	S2S3	null	CDFW_SSC-Species of Special Concern	Aquatic, Sacramento/San Joaquin flowing waters
Layia septentrionalis	Colusa layia	Dicots	PDAST5N0F0	57	1	None	None	G2	S2	1B.2	BLM_S-Sensitive	Chaparral, Cismontane woodland, Ultramafic, Valley & foothill grassland
Legenere limosa	legenere	Dicots	PDCAM0C010	78	1	None	None	G2	S2	1B.1	BLM_S-Sensitive	Vernal pool, Wetland
Leptosiphon jepsonii	Jepson's leptosiphon	Dicots	PDPLM09140	39	8	None	None	G3	S3	1B.2	SB_RSABG-Rancho Santa Ana Botanic Garden, SB_USDA-US Dept of Agriculture	Chaparral, Cismontane woodland, Ultramafic
Lilium pardalinum ssp. pitkinense	Pitkin Marsh lily	Monocots	PMLIL1A0H3	4	2	Endangered	Endangered	G5T1	S1	1B.1	SB_BerrySB-Berry Seed Bank, SB_RSABG-Rancho Santa Ana Botanic Garden, SB_USDA-US Dept of Agriculture	Cismontane woodland, Freshwater marsh, Marsh & swamp, Meadow & seep, Wetland
Limnanthes vinculans	Sebastopol meadowfoam	Dicots	PDLIM02090	45	31	Endangered	Endangered	G1	S1	1B.1	SB_RSABG-Rancho Santa Ana Botanic Garden	Meadow & seep, Valley & foothill grassland, Vernal pool, Wetland
Linderiella occidentalis	California linderiella	Crustaceans	ICBRA06010	430	4	None	None	G2G3	S2S3	null	IUCN_NT-Near Threatened	Vernal pool
Microseris paludosa	marsh microseris	Dicots	PDAST6E0D0	39	2	None	None	G2	S2	1B.2	null	Cismontane woodland, Closed-cone coniferous forest, Coastal scrub, Valley & foothill grassland
Myotis thysanodes	fringed myotis	Mammals	AMACC01090	85	1	None	None	G4	S3	null	BLM_S-Sensitive, IUCN_LC-Least Concern, USFS_S-Sensitive,	null

											WBWG_H- High Priority	
Navarretia leucocephala ssp. bakeri	Baker's navarretia	Dicots	PDPLM0C0E1	58	11	None	None	G4T2	S2	1B.1	BLM_S-Sensitive	Cismontane woodland, Lower montane coniferous forest, Meadow & seep, Valley & foothill grassland, Vernal pool, Wetland
Navarretia leucocephala ssp. plieantha	many-flowered navarretia	Dicots	PDPLM0C0E5	8	1	Endangered	Endangered	G4T1	S1	1B.2	SB_RSABG-Rancho Santa Ana Botanic Garden	Vernal pool, Wetland
Northern Hardpan Vernal Pool	Northern Hardpan Vernal Pool	Herbaceous	CTT44110CA	126	5	None	None	G3	S3.1	null	null	Vernal pool, Wetland
Northern Vernal Pool	Northern Vernal Pool	Herbaceous	CTT44100CA	20	2	None	None	G2	S2.1	null	null	Vernal pool, Wetland
Oncorhynchus kisutch	coho salmon - central California coast ESU	Fish	AFCHA02034	22	1	Endangered	Endangered	G4	S2?	null	AFS_EN-Endangered	Aquatic
Rana boylei	foothill yellow-legged frog	Amphibians	AAABH01050	877	6	None	None	G3	S3	null	BLM_S-Sensitive, CDFW_SSC-Species of Special Concern, IUCN_NT-Near Threatened, USFS_S-Sensitive	Aquatic, Chaparral, Cismontane woodland, Coastal scrub, Klamath/North coast flowing waters, Lower montane coniferous forest, Meadow & seep, Riparian forest, Riparian woodland, Sacramento/San Joaquin flowing waters
Rhynchospora alba	white beaked-rush	Monocots	PMCYP0N010	11	1	None	None	G5	S2	2B.2	null	Bog & fen, Marsh & swamp, Meadow & seep, Wetland
Rhynchospora californica	California beaked-rush	Monocots	PMCYP0N060	9	2	None	None	G1	S1	1B.1	BLM_S-Sensitive	Freshwater marsh, Lower montane coniferous forest, Marsh & swamp, Meadow & seep, Wetland
Rhynchospora capitellata	brownish beaked-rush	Monocots	PMCYP0N080	19	2	None	None	G5	S1	2B.2	null	Lower montane coniferous forest, Marsh & swamp, Meadow & seep, Upper montane coniferous forest, Wetland
Rhynchospora globularis	round-headed beaked-rush	Monocots	PMCYP0N0W0	2	2	None	None	G4	S1	2B.1	null	Freshwater marsh, Marsh & swamp, Wetland
Syncaris pacifica	California freshwater shrimp	Crustaceans	ICMAL27010	18	2	Endangered	Endangered	G1	S1	null	IUCN_EN-Endangered	Aquatic, Sacramento/San Joaquin flowing waters
Taxidea taxus	American badger	Mammals	AMAJF04010	517	3	None	None	G5	S3	null	CDFW_SSC-Species of Special Concern, IUCN_LC-Least Concern	Alkali marsh, Alkali playa, Alpine, Alpine dwarf scrub, Bog & fen, Brackish marsh, Broadleaved upland forest, Chaparral, Chenopod scrub, Cismontane woodland, Closed-cone coniferous forest, Coastal bluff scrub, Coastal dunes, Coastal prairie, Coastal scrub, Desert dunes, Desert wash, Freshwater marsh, Great Basin grassland, Great Basin scrub, Interior dunes, Lone formation, Joshua tree woodland, Limestone, Lower montane coniferous forest, Marsh & swamp, Meadow & seep, Mojavean desert scrub, Montane dwarf scrub, North coast coniferous forest, Oldgrowth, Pavement plain, Redwood, Riparian forest, Riparian scrub, Riparian woodland, Salt marsh, Sonoran desert scrub, Sonoran thorn woodland, Ultramafic, Upper montane coniferous forest, Upper Sonoran scrub, Valley & foothill grassland
Trifolium amoenum	two-fork clover	Dicots	PDFAB40040	26	3	Endangered	None	G1	S1	1B.1	SB_RSABG-Rancho Santa Ana Botanic Garden, SB_USDA-US	Coastal bluff scrub, Ultramafic, Valley & foothill grassland

											Dept of Agriculture	
Trifolium hydrophilum	saline clover	Dicots	PDFAB400R5	49	3	None	None	G2	S2	1B.2	null	Marsh & swamp, Valley & foothill grassland, Vernal pool, Wetland
Triquetrella californica	coastal triquetrella	Bryophytes	NBMUS7S010	13	1	None	None	G2	S2	1B.2	USFS_S-Sensitive	Coastal bluff scrub, Coastal scrub
Valley Needlegrass Grassland	Valley Needlegrass Grassland	Herbaceous	CTT42110CA	45	1	None	None	G3	S3.1	null	null	Valley & foothill grassland
Viburnum ellipticum	oval-leaved viburnum	Dicots	PDCPR07080	38	4	None	None	G4G5	S3?	2B.3	null	Chaparral, Cismontane woodland, Lower montane coniferous forest

Oakmont - Emerald Isle Skilled Nursing Facility

IPaC Trust Resources Report

Generated September 29, 2016 05:04 PM MDT, IPaC v3.0.9

This report is for informational purposes only and should not be used for planning or analyzing project level impacts. For project reviews that require U.S. Fish & Wildlife Service review or concurrence, please return to the IPaC website and request an official species list from the Regulatory Documents page.

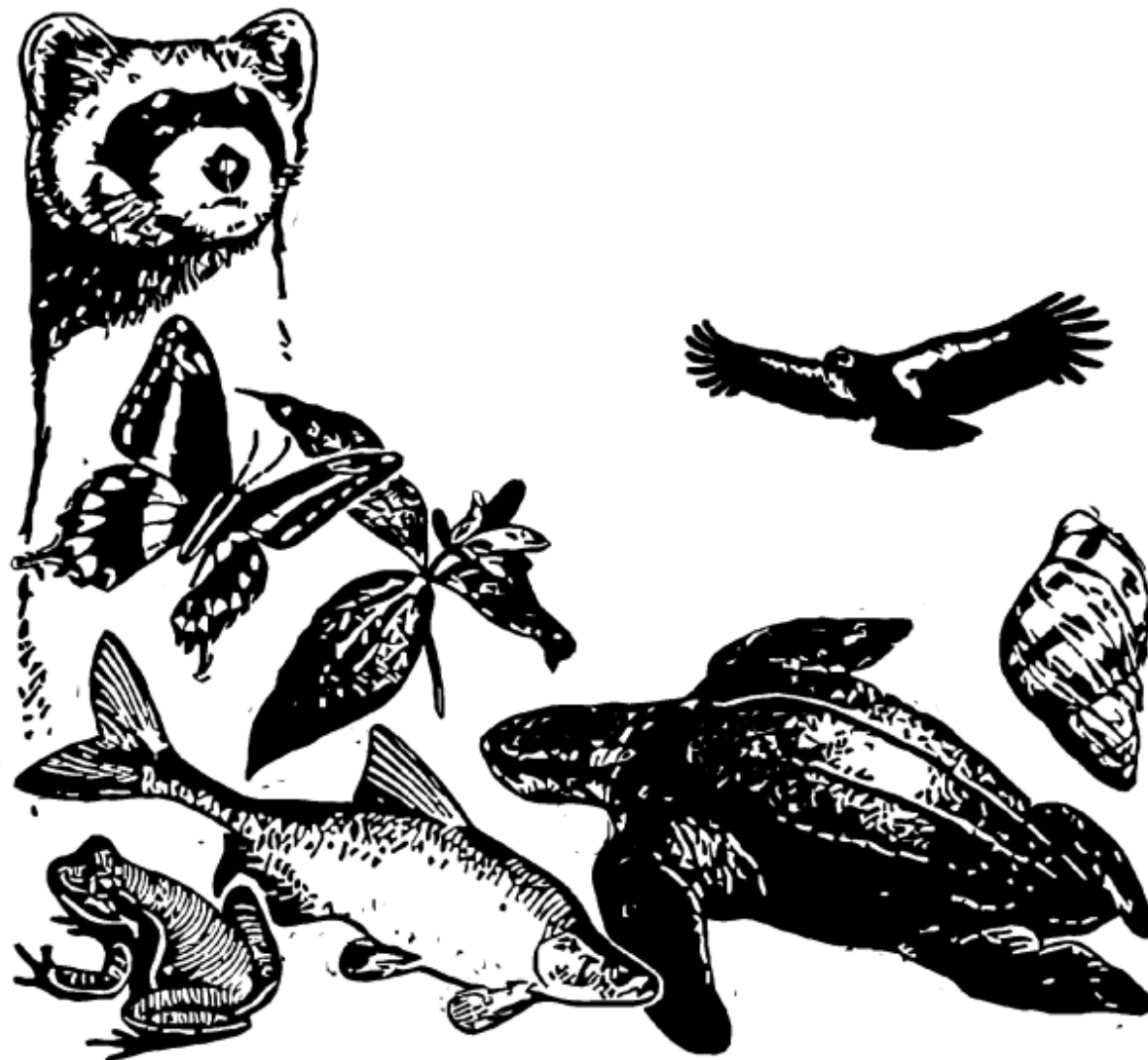


Table of Contents

IPaC Trust Resources Report	<u>1</u>
Project Description	<u>1</u>
Endangered Species	<u>2</u>
Migratory Birds	<u>5</u>
Refuges & Hatcheries	<u>7</u>
Wetlands	<u>8</u>

U.S. Fish & Wildlife Service

IPaC Trust Resources Report



NAME

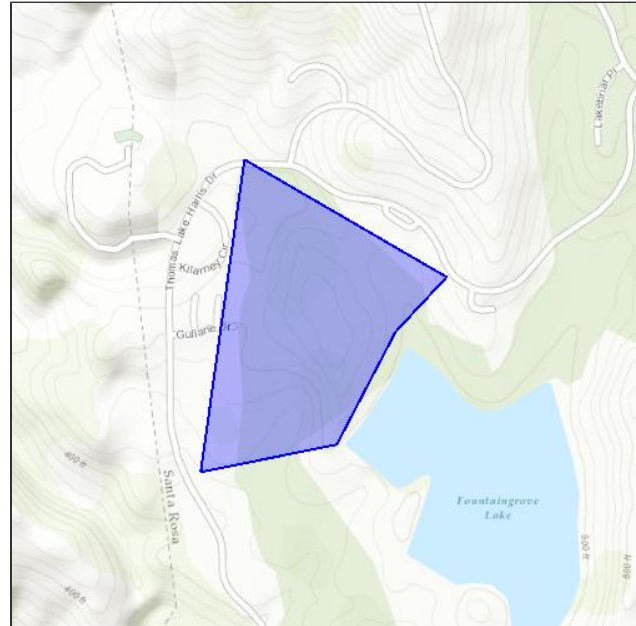
Oakmont - Emerald Isle Skilled Nursing Facility

LOCATION

Sonoma County, California

IPAC LINK

<https://ecos.fws.gov/ipac/project/5YY65-ZBYFB-EXDCD-IGEPY-4SDALE>



U.S. Fish & Wildlife Service Contact Information

Trust resources in this location are managed by:

Sacramento Fish And Wildlife Office

Federal Building

2800 Cottage Way, Room W-2605

Sacramento, CA 95825-1846

(916) 414-6600

Endangered Species

Proposed, candidate, threatened, and endangered species are managed by the [Endangered Species Program](#) of the U.S. Fish & Wildlife Service.

This USFWS trust resource report is for informational purposes only and should not be used for planning or analyzing project level impacts.

For project evaluations that require USFWS concurrence/review, please return to the IPaC website and request an official species list from the Regulatory Documents section.

[Section 7](#) of the Endangered Species Act **requires** Federal agencies to "request of the Secretary information whether any species which is listed or proposed to be listed may be present in the area of such proposed action" for any project that is conducted, permitted, funded, or licensed by any Federal agency.

A letter from the local office and a species list which fulfills this requirement can only be obtained by requesting an official species list either from the Regulatory Documents section in IPaC or from the local field office directly.

The list of species below are those that may occur or could potentially be affected by activities in this location:

Amphibians

California Red-legged Frog *Rana draytonii* Threatened

CRITICAL HABITAT

There is **final** critical habitat designated for this species.

http://ecos.fws.gov/tess_public/profile/speciesProfile.action?spcode=D02D

California Tiger Salamander *Ambystoma californiense* Endangered

CRITICAL HABITAT

There is **final** critical habitat designated for this species.

http://ecos.fws.gov/tess_public/profile/speciesProfile.action?spcode=D01T

Birds

Northern Spotted Owl *Strix occidentalis caurina* Threatened

CRITICAL HABITAT

There is **final** critical habitat designated for this species.

http://ecos.fws.gov/tess_public/profile/speciesProfile.action?spcode=B08B

Crustaceans

California Freshwater Shrimp *Syncaris pacifica* Endangered

CRITICAL HABITAT

No critical habitat has been designated for this species.

http://ecos.fws.gov/tess_public/profile/speciesProfile.action?spcode=K01W

Fishes

Steelhead *Oncorhynchus (=Salmo) mykiss* Threatened

CRITICAL HABITAT

No critical habitat has been designated for this species.

http://ecos.fws.gov/tess_public/profile/speciesProfile.action?spcode=E08D

Flowering Plants

Burke's Goldfields *Lasthenia burkei* Endangered

CRITICAL HABITAT

No critical habitat has been designated for this species.

http://ecos.fws.gov/tess_public/profile/speciesProfile.action?spcode=Q1XU

Clara Hunt's Milk-vetch *Astragalus clarianus* Endangered

CRITICAL HABITAT

No critical habitat has been designated for this species.

http://ecos.fws.gov/tess_public/profile/speciesProfile.action?spcode=Q05J

Sebastopol Meadowfoam *Limnanthes vinculans* Endangered

CRITICAL HABITAT

No critical habitat has been designated for this species.

http://ecos.fws.gov/tess_public/profile/speciesProfile.action?spcode=Q1Y1

Showy Indian Clover *Trifolium amoenum* Endangered

CRITICAL HABITAT

No critical habitat has been designated for this species.

http://ecos.fws.gov/tess_public/profile/speciesProfile.action?spcode=Q238

Sonoma Sunshine *Blennosperma bakeri* Endangered

CRITICAL HABITAT

No critical habitat has been designated for this species.

http://ecos.fws.gov/tess_public/profile/speciesProfile.action?spcode=Q1TO

White Sedge *Carex albida* Endangered

CRITICAL HABITAT

No critical habitat has been designated for this species.

http://ecos.fws.gov/tess_public/profile/speciesProfile.action?spcode=Q0BL

Insects

San Bruno Elfin Butterfly *Callophrys mossii bayensis*

Endangered

CRITICAL HABITAT

No critical habitat has been designated for this species.

http://ecos.fws.gov/tess_public/profile/speciesProfile.action?scode=I00Q

Critical Habitats

There are no critical habitats in this location

Migratory Birds

Birds are protected by the [Migratory Bird Treaty Act](#) and the [Bald and Golden Eagle Protection Act](#).

Any activity that results in the take of migratory birds or eagles is prohibited unless authorized by the U.S. Fish & Wildlife Service.^[1] There are no provisions for allowing the take of migratory birds that are unintentionally killed or injured.

Any person or organization who plans or conducts activities that may result in the take of migratory birds is responsible for complying with the appropriate regulations and implementing appropriate conservation measures.

1. 50 C.F.R. Sec. 10.12 and 16 U.S.C. Sec. 668(a)

Additional information can be found using the following links:

- Birds of Conservation Concern
<http://www.fws.gov/birds/management/managed-species/birds-of-conservation-concern.php>
- Conservation measures for birds
<http://www.fws.gov/birds/management/project-assessment-tools-and-guidance/conservation-measures.php>
- Year-round bird occurrence data
<http://www.birdscanada.org/birdmon/default/datasummaries.jsp>

The following species of migratory birds could potentially be affected by activities in this location:

Bald Eagle *Haliaeetus leucocephalus*

Bird of conservation concern

Season: Year-round

http://ecos.fws.gov/tess_public/profile/speciesProfile.action?spcode=B008

Bell's Sparrow *Amphispiza belli*

Bird of conservation concern

Season: Year-round

http://ecos.fws.gov/tess_public/profile/speciesProfile.action?spcode=B0HE

Burrowing Owl *Athene cunicularia*

Bird of conservation concern

Season: Year-round

http://ecos.fws.gov/tess_public/profile/speciesProfile.action?spcode=B0NC

Fox Sparrow *Passerella iliaca*

Bird of conservation concern

Season: Wintering

Least Bittern *Ixobrychus exilis*

Season: Breeding

http://ecos.fws.gov/tess_public/profile/speciesProfile.action?scode=B092

Lesser Yellowlegs *Tringa flavipes*

Season: Wintering

http://ecos.fws.gov/tess_public/profile/speciesProfile.action?scode=B0MD

Bird of conservation concern

Lewis's Woodpecker *Melanerpes lewis*

Season: Wintering

http://ecos.fws.gov/tess_public/profile/speciesProfile.action?scode=B0HQ

Bird of conservation concern

Long-billed Curlew *Numenius americanus*

Season: Wintering

http://ecos.fws.gov/tess_public/profile/speciesProfile.action?scode=B06S

Bird of conservation concern

Nuttall's Woodpecker *Picoides nuttallii*

Season: Year-round

http://ecos.fws.gov/tess_public/profile/speciesProfile.action?scode=B0HT

Bird of conservation concern

Oak Titmouse *Baeolophus inornatus*

Season: Year-round

http://ecos.fws.gov/tess_public/profile/speciesProfile.action?scode=B0MJ

Bird of conservation concern

Olive-sided Flycatcher *Contopus cooperi*

Season: Breeding

http://ecos.fws.gov/tess_public/profile/speciesProfile.action?scode=B0AN

Bird of conservation concern

Peregrine Falcon *Falco peregrinus*

Season: Year-round

http://ecos.fws.gov/tess_public/profile/speciesProfile.action?scode=B0FU

Bird of conservation concern

Rufous-crowned Sparrow *Aimophila ruficeps*

Season: Year-round

http://ecos.fws.gov/tess_public/profile/speciesProfile.action?scode=B0MX

Bird of conservation concern

Short-eared Owl *Asio flammeus*

Season: Wintering

http://ecos.fws.gov/tess_public/profile/speciesProfile.action?scode=B0HD

Bird of conservation concern

Western Grebe *aechmophorus occidentalis*

Season: Year-round

http://ecos.fws.gov/tess_public/profile/speciesProfile.action?scode=B0EA

Bird of conservation concern

Wildlife refuges and fish hatcheries

There are no refuges or fish hatcheries in this location

Wetlands in the National Wetlands Inventory

Impacts to [NWI wetlands](#) and other aquatic habitats may be subject to regulation under Section 404 of the Clean Water Act, or other State/Federal statutes.

For more information please contact the Regulatory Program of the local [U.S. Army Corps of Engineers District](#).

DATA LIMITATIONS

The Service's objective of mapping wetlands and deepwater habitats is to produce reconnaissance level information on the location, type and size of these resources. The maps are prepared from the analysis of high altitude imagery. Wetlands are identified based on vegetation, visible hydrology and geography. A margin of error is inherent in the use of imagery; thus, detailed on-the-ground inspection of any particular site may result in revision of the wetland boundaries or classification established through image analysis.

The accuracy of image interpretation depends on the quality of the imagery, the experience of the image analysts, the amount and quality of the collateral data and the amount of ground truth verification work conducted. Metadata should be consulted to determine the date of the source imagery used and any mapping problems.

Wetlands or other mapped features may have changed since the date of the imagery or field work. There may be occasional differences in polygon boundaries or classifications between the information depicted on the map and the actual conditions on site.

DATA EXCLUSIONS

Certain wetland habitats are excluded from the National mapping program because of the limitations of aerial imagery as the primary data source used to detect wetlands. These habitats include seagrasses or submerged aquatic vegetation that are found in the intertidal and subtidal zones of estuaries and nearshore coastal waters. Some deepwater reef communities (coral or tubercid worm reefs) have also been excluded from the inventory. These habitats, because of their depth, go undetected by aerial imagery.

DATA PRECAUTIONS

Federal, state, and local regulatory agencies with jurisdiction over wetlands may define and describe wetlands in a different manner than that used in this inventory. There is no attempt, in either the design or products of this inventory, to define the limits of proprietary jurisdiction of any Federal, state, or local government or to establish the geographical scope of the regulatory programs of government agencies. Persons intending to engage in activities involving modifications within or adjacent to wetland areas should seek the advice of appropriate federal, state, or local agencies concerning specified agency regulatory programs and proprietary jurisdictions that may affect such activities.

There are no wetlands in this location

THIS PAGE INTENTIONALLY LEFT BLANK

B.2 - Arborist's Report

THIS PAGE INTENTIONALLY LEFT BLANK

EMERALD ISLE ASSISTED LIVING

GULLANE DR. - SANTA ROSA, CA.

ARBORIST'S REPORT Tree Inventory & Evaluation

April 11, 2017

Prepared For:

Oakmont Senior Living

Submitted By:

Becky Duckles, ISA Certified Arborist #WE-0796A

Sebastopol, CA

707.829.0555 PH

Emerald Isle - Assisted Living

TREE #	SPECIES	TRUNK DIAMETER (In.)	GENERAL HEALTH	STRUCTURAL INTEGRITY	RECOMMENDATIONS
1	Coast Live Oak/ <i>Quercus agrifolia</i>	13"	Good	Good	To be preserved; outside zone of construction impact
2	Coast Live Oak/ <i>Quercus agrifolia</i>	11/12/11/13"	Good	Good	To be preserved; outside zone of construction impact
7	Coast Live Oak/ <i>Quercus agrifolia</i>	11/9"	Fair/Good	Good	To be preserved; outside zone of construction impact
8	Buckeye/ <i>Aesculus californica</i>	6/8"	Fair	Fair	To be preserved; outside zone of construction impact
9	Coast Live Oak/ <i>Quercus agrifolia</i>	18"	Good/Excellent	Excellent	To be preserved; outside zone of construction impact
10	Blue Oak/ <i>Quercus douglasii</i>	15" @ 3'	Good	Good	To be preserved; outside zone of construction impact
11	Black Oak/ <i>Quercus kelloggii</i>	18/14"	Excellent	Good, 1 trunk broken off	To be preserved; outside zone of construction impact
12	Buckeye/ <i>Aesculus californica</i>	7/6"	Fair/Good	Good	To be preserved; outside zone of construction impact
13	Valley Oak/ <i>Quercus lobata</i>	11/11/17"	Fair	Good	To be preserved; outside zone of construction impact
13A	Coast Live Oak/ <i>Quercus agrifolia</i>	16"	Good	Good	To be preserved; outside zone of construction impact
14	Black Oak/ <i>Quercus kelloggii</i>	9/14/13"	Good	Good, canopy radius to north & south	To be preserved; outside zone of construction impact
15	Coast Live Oak/ <i>Quercus agrifolia</i>	13"	Good	Good, trunk and canopy development to south	To be preserved; outside zone of construction impact
16	California Bay/ <i>Umbellularia californica</i>	12/15/25"	Excellent	Excellent, beautiful specimen	To be preserved; outside zone of construction impact
17	California Bay/ <i>Umbellularia californica</i>	27"	Excellent	Excellent, beautiful specimen	To be preserved; outside zone of construction impact
18	Coast Live Oak/ <i>Quercus agrifolia</i>	18"	Good	Good	To be preserved; outside zone of construction impact
19	Buckeye/ <i>Aesculus californica</i>	8"	Poor/Fair	Fair, trunk leans north	To be preserved; outside zone of construction impact
20	Black Oak/ <i>Quercus kelloggii</i>	13"	Good	Good, canopy radius 25' north, 20' west	To be preserved; outside zone of construction impact
21	Black Oak/ <i>Quercus kelloggii</i>	16"	Good	Good, canopy development to east	To be preserved; outside zone of construction impact
22	Coast Live Oak/ <i>Quercus agrifolia</i>	14"	Fair	development to west, trunk leans west	To be preserved; outside zone of construction impact
23	Coast Live Oak/ <i>Quercus agrifolia</i>	14" @ 3'	Fair/Good	Good, canopy development to north/east	To be preserved; outside zone of construction impact
24	Black Oak/ <i>Quercus kelloggii</i>	15/13"	Good	Good, canopy radius 23' to north/west; decay on E side trunk	To be preserved; outside zone of construction impact

Emerald Isle - Assisted Living

TREE #	SPECIES	TRUNK DIAMETER (In.)	GENERAL HEALTH	STRUCTURAL INTEGRITY	RECOMMENDATIONS
25	Coast Live Oak/ <i>Quercus agrifolia</i>	14/11/10" @ 3'	Fair	Good, multi-trunk with included bark	To be preserved; outside zone of construction impact
26	Coast Live Oak/ <i>Quercus agrifolia</i>	19/17"	Excellent	Excellent, canopy radius 30' to south, 25' to east	To be preserved; outside zone of construction impact
27	Coast Live Oak/ <i>Quercus agrifolia</i>	11/15/18"	Good/Excellent	Good/Excellent	To be preserved; outside zone of construction impact
28	Valley Oak/ <i>Quercus lobata</i>	12/13"	Good/Excellent	Excellent, canopy radius 21' to north, 23' to east	To be preserved; outside zone of construction impact
29	Coast Live Oak/ <i>Quercus agrifolia</i>	15/15/13"	Good	Good /Excellent-beautiful. Low 6' scaffold branch	To be preserved; outside zone of construction impact
30	Coast Live Oak/ <i>Quercus agrifolia</i>	12/15"	Good/Excellent	Excellent	To be preserved
31	Coast Live Oak/ <i>Quercus agrifolia</i>	15"	Good	Excellent	To be preserved; minimal clearance pruning will be needed; minimize grading
32	Coast Live Oak/ <i>Quercus agrifolia</i>	22"	Good	Good	To be preserved; outside zone of construction impact
33	Valley Oak/ <i>Quercus lobata</i>	12"	Good	Good	To be preserved
34	Valley Oak/ <i>Quercus lobata</i>	7/8"	Good	Good	To be preserved
35	Blue Oak/ <i>Quercus douglasii</i>	12"	Good	Good	To be preserved
36	Blue Oak/ <i>Quercus douglasii</i>	13"	Fair/Good	Good	To be preserved
37	Coast Live Oak/ <i>Quercus agrifolia</i>	9"	Fair	Good	To be preserved; outside zone of construction impact
38	Valley Oak/ <i>Quercus lobata</i>	23"	Fair/Good	Fair; crown development to north & south- w/decay	To be removed
39	Coast Live Oak/ <i>Quercus agrifolia</i>	22"	Good	Good	will be needed; minimize grading within rootzone
40	Coast Live Oak/ <i>Quercus agrifolia</i>	10/12" @ 3'	Fair/Good	Good	To be preserved
41	Coast Live Oak/ <i>Quercus agrifolia</i>	11"	Good	Good	To be preserved; outside zone of construction impact
42	Coast Live Oak/ <i>Quercus agrifolia</i>	17"	Good/Excellent	Excellent	To be preserved; clearance pruning will be needed; minimize grading
43	Black Oak/ <i>Quercus kelloggi</i>	16/11"	Excellent	Excellent	To be preserved; outside zone of construction impact
44	Coast Live Oak/ <i>Quercus agrifolia</i>	8/9/10"	Good	Good	To be preserved; outside zone of construction impact
45	Coast Live Oak/ <i>Quercus agrifolia</i>	14"	Good	Good	To be preserved; outside zone of construction impact

Emerald Isle - Assisted Living

TREE #	SPECIES	TRUNK DIAMETER (In.)	GENERAL HEALTH	STRUCTURAL INTEGRITY	RECOMMENDATIONS
46	Coast Live Oak/ <i>Quercus agrifolia</i>	11" @ 3'/13"	Good	Good	To be preserved; outside zone of construction impact
47	Coast Live Oak/ <i>Quercus agrifolia</i>	14"	Good/Excellent	Excellent	To be preserved; outside zone of construction impact
48	Coast Live Oak/ <i>Quercus agrifolia</i>	13" @ 2'	Good	Good	To be preserved; outside zone of construction impact
49	Coast Live Oak/ <i>Quercus agrifolia</i>	13"	Good	Good	To be preserved; outside zone of construction impact
50	Coast Live Oak/ <i>Quercus agrifolia</i>	14" @ 2'	Good	Fair	To be preserved; clearance pruning will be needed; minimize grading
51	Coast Live Oak/ <i>Quercus agrifolia</i>	16"	Good	Good	To be preserved; clearance pruning will be needed; minimize grading
52	Coast Live Oak/ <i>Quercus agrifolia</i>	20"	Excellent	Excellent	To be preserved; clearance pruning will be needed; minimize grading
53	Coast Live Oak/ <i>Quercus agrifolia</i>	14"	Good	Good	To be preserved; outside zone of construction impact
54	Coast Live Oak/ <i>Quercus agrifolia</i>	12"	Good	Good	To be preserved; outside zone of construction impact
55	Coast Live Oak/ <i>Quercus agrifolia</i>	7/7/12/14"	Fair/Good	Good	To be preserved; clearance pruning may be needed
56	Coast Live Oak/ <i>Quercus agrifolia</i>	9"	Fair	Good, canopy development to south	To be preserved; outside zone of construction impact
57	Coast Live Oak/ <i>Quercus agrifolia</i>	6"	Fair	Fair	To be preserved; outside zone of construction impact
58	Coast Live Oak/ <i>Quercus agrifolia</i>	6"	Good	Good, trunk leans to east	To be preserved; outside zone of construction impact
59	Coast Live Oak/ <i>Quercus agrifolia</i>	12/11/15"	Good/Excellent	Good/Excellent, low branching	To be preserved; outside zone of construction impact
60	Coast Live Oak/ <i>Quercus agrifolia</i>	11/8"	Good	Good	To be preserved; outside zone of construction impact
61	Coast Live Oak/ <i>Quercus agrifolia</i>	17"	Fair	Good	To be preserved; outside zone of construction impact
62	Coast Live Oak/ <i>Quercus agrifolia</i>	25"	Excellent	Canopy radius 15' north, 25' east	To be preserved; clearance pruning may be needed; minimize grading
63	Coast Live Oak/ <i>Quercus agrifolia</i>	15"	Good/Excellent	Excellent	To be preserved; outside zone of construction impact
64	Coast Live Oak/ <i>Quercus agrifolia</i>	10/12"	Fair/Good	Good	To be preserved; outside zone of construction impact
65	Coast Live Oak/ <i>Quercus agrifolia</i>	12"	Good	Good	To be preserved; outside zone of construction impact
66	Black Oak/ <i>Quercus kelloggii</i>	10/12"	Excellent	Excellent	To be preserved; outside zone of construction impact

Emerald Isle - Assisted Living

TREE #	SPECIES	TRUNK DIAMETER (In.)	GENERAL HEALTH	STRUCTURAL INTEGRITY	RECOMMENDATIONS
67	Coast Live Oak/ <i>Quercus agrifolia</i>	14"	Fair	Good	To be preserved; outside zone of construction impact
68	Coast Live Oak/ <i>Quercus agrifolia</i>	14"	Good	Good	To be preserved; outside zone of construction impact
68A	Coast Live Oak/ <i>Quercus agrifolia</i>	7"	Poor/Fair	Fair	To be preserved; outside zone of construction impact
69	Coast Live Oak/ <i>Quercus agrifolia</i>	12"	Good	Good	To be preserved; outside zone of construction impact
70	Coast Live Oak/ <i>Quercus agrifolia</i>	11"	Good	Good	To be preserved; outside zone of construction impact
70A	California Bay/ <i>Umbellularia californica</i>	5 1/4"	Good/Excellent	Excellent	To be preserved; outside zone of construction impact
71	Black Oak/ <i>Quercus kelloggii</i>	11"	Excellent	Excellent	To be preserved; outside zone of construction impact
71A	California Bay/ <i>Umbellularia californica</i>	10"	Excellent	Excellent	To be preserved; outside zone of construction impact
71B	California Bay/ <i>Umbellularia californica</i>	7"	Excellent	Excellent	To be preserved; outside zone of construction impact
72	Coast Live Oak/ <i>Quercus agrifolia</i>	14"	Good	Good	To be preserved; outside zone of construction impact
73	Coast Live Oak/ <i>Quercus agrifolia</i>	15"	Fair/Good	Good	To be preserved; outside zone of construction impact
74	California Bay/ <i>Umbellularia californica</i>	18"	Good	Good	To be preserved; outside zone of construction impact
75	Buckeye/ <i>Aesculus californica</i>	7 7/8"/6"	Fair/Good	Good	To be preserved; outside zone of construction impact
76	Black Oak/ <i>Quercus kelloggii</i>	19"	Good/Excellent	Good/Excellent	To be preserved; outside zone of construction impact
77	Coast Live Oak/ <i>Quercus agrifolia</i>	15"	Good	Good	To be preserved; outside zone of construction impact
78	Coast Live Oak/ <i>Quercus agrifolia</i>	14" @ 3"	Good	Good	To be preserved; clearance pruning will be needed; minimize grading
79	California Bay/ <i>Umbellularia californica</i>	6"	Good/Excellent	Excellent	To be preserved
80	Black Oak/ <i>Quercus kelloggii</i>	10"	Fair	Fair	To be preserved; outside zone of construction impact
81	Black Oak/ <i>Quercus kelloggii</i>	11" @ 3'	Good	Good, canopy radius 11' to north, 12' clearance	To be preserved; outside zone of construction impact
82	Black Oak/ <i>Quercus kelloggii</i>	9"	Good	Good, canopy radius 6' to north	To be preserved; outside zone of construction impact
83	Black Oak/ <i>Quercus kelloggii</i>	14"	Good	Excellent, canopy radius 15' to north	To be preserved; clearance pruning will be needed; minimize grading

Emerald Isle - Assisted Living

TREE #	SPECIES	TRUNK DIAMETER (In.)	GENERAL HEALTH	STRUCTURAL INTEGRITY	RECOMMENDATIONS
84	Coast Live Oak/ <i>Quercus agrifolia</i>	8"	Poor/Fair	Fair	To be preserved; outside zone of construction impact
85	Coast Live Oak/ <i>Quercus agrifolia</i>	8"	Poor/Fair	Fair	To be preserved; outside zone of construction impact
86	Black Oak/ <i>Quercus kelloggii</i>	7"	Fair/Good	Good	To be preserved; outside zone of construction impact
87	Black Oak/ <i>Quercus kelloggii</i>	11" @ 2'	Fair/Good	Good-not accurately placed on plans.	To be preserved; outside zone of construction impact
88	Coast Live Oak/ <i>Quercus agrifolia</i>	9"	Fair	Fair	To be preserved; outside zone of construction impact
89	Black Oak/ <i>Quercus kelloggii</i>	9"	Good	Good	To be preserved; outside zone of construction impact
90	Coast Live Oak/ <i>Quercus agrifolia</i>	9"	Good	Good	To be preserved; outside zone of construction impact
91	Black Oak/ <i>Quercus kelloggii</i>	9"	Good	Good	To be preserved; outside zone of construction impact
92	Black Oak/ <i>Quercus kelloggii</i>	10"	Good	Good	To be preserved; outside zone of construction impact
93	Black Oak/ <i>Quercus kelloggii</i>	8"	Good	Good	To be preserved; outside zone of construction impact
94	Coast Live Oak/ <i>Quercus agrifolia</i>	12" @ 3'	Fair/Good	Good	To be preserved; outside zone of construction impact
95	Black Oak/ <i>Quercus kelloggii</i>	10"	Good/Excellent	Good	To be preserved; outside zone of construction impact
96	California Bay/ <i>Umbellularia californica</i>	11"	Excellent	Excellent	To be preserved; outside zone of construction impact
97	California Bay/ <i>Umbellularia californica</i>	17"	Good	Good	To be preserved; outside zone of construction impact
98	Black Oak/ <i>Quercus kelloggii</i>	18"	Excellent	Excellent, beautiful specimen	To be preserved; outside zone of construction impact
99	California Bay/ <i>Umbellularia californica</i>	12"	Excellent	Excellent	To be preserved; outside zone of construction impact
100	Coast Live Oak/ <i>Quercus agrifolia</i>	9"	Fair/Good	Good	To be preserved; outside zone of construction impact
101	Coast Live Oak/ <i>Quercus agrifolia</i>	6"	Fair	Fair	To be preserved; outside zone of construction impact
102	Coast Live Oak/ <i>Quercus agrifolia</i>	10"	Fair/Good	Good	To be preserved; outside zone of construction impact
103	Black Oak/ <i>Quercus kelloggii</i>	11"	Good/Excellent	Excellent, canopy radius 20' to north/west	To be preserved; outside zone of construction impact
104	Coast Live Oak/ <i>Quercus agrifolia</i>	12"	Good/Excellent	Excellent	To be preserved; outside zone of construction impact

Emerald Isle - Assisted Living

TREE #	SPECIES	TRUNK DIAMETER (In.)	GENERAL HEALTH	STRUCTURAL INTEGRITY	RECOMMENDATIONS
104A	Coast Live Oak/ <i>Quercus agrifolia</i>	7/5/8/4/5/5/5"	Good/Excellent	Good, canopy radius 15' to south/west	To be preserved; outside zone of construction impact
105	California Bay/ <i>Umbellularia californica</i>	15"	Good/Excellent	Good	To be preserved; outside zone of construction impact
106	Black Oak/ <i>Quercus kelloggii</i>	12"	Good	Good	To be preserved; outside zone of construction impact
107	Black Oak/ <i>Quercus kelloggii</i>	8"	Good	Good, low branching, trunk leans to west	To be preserved; outside zone of construction impact
108	Coast Live Oak/ <i>Quercus agrifolia</i>	10"/5"	Good	Good	To be preserved; outside zone of construction impact
109	Black Oak/ <i>Quercus kelloggii</i>	15"	Poor/Fair	Poor, severe internal decay	To be preserved; outside zone of construction impact
110	Black Oak/ <i>Quercus kelloggii</i>	12"	Excellent	Excellent	To be preserved; outside zone of construction impact
111	Black Oak/ <i>Quercus kelloggii</i>	11"	Good/Excellent	Excellent	To be preserved; outside zone of construction impact
112	Coast Live Oak/ <i>Quercus agrifolia</i>	9"/7"	Fair/Good	Good	To be preserved; outside zone of construction impact
113	Coast Live Oak/ <i>Quercus agrifolia</i>	12"/13"	Good	Good	To be preserved; outside zone of construction impact
113A	Coast Live Oak/ <i>Quercus agrifolia</i>	7"/7"	Good	Good, low branching, 10' radius	To be preserved; outside zone of construction impact
114	Black Oak/ <i>Quercus kelloggii</i>	13"	Good	Good	To be preserved; outside zone of construction impact
115	Black Oak/ <i>Quercus kelloggii</i>	19"/13"	Good/Excellent	branching north/east & west	To be preserved; outside zone of construction impact
116	Black Oak/ <i>Quercus kelloggii</i>	9"/13"	Excellent	Excellent, beautiful specimen	To be preserved; outside zone of construction impact
117	Black Oak/ <i>Quercus kelloggii</i>	8"	Good	Good	To be preserved; outside zone of construction impact
118	Black Oak/ <i>Quercus kelloggii</i>	11"	Good	Good	To be preserved; outside zone of construction impact
119	Coast Live Oak/ <i>Quercus agrifolia</i>	13" @ 3'	Excellent	Excellent, low branching, 10' radius, beautiful specimen	To be preserved; outside zone of construction impact
120	Coast Live Oak/ <i>Quercus agrifolia</i>	15"	Good/Excellent	Excellent, beautiful specimen-high branching	To be preserved; outside zone of construction impact
121	Coast Live Oak/ <i>Quercus agrifolia</i>	16.5	Good/Excellent	Excellent, beautiful specimen-high branching	To be preserved; outside zone of construction impact
122	Black Oak/ <i>Quercus kelloggii</i>	16"	Good	Good	To be preserved; outside zone of construction impact
123	Black Oak/ <i>Quercus kelloggii</i>	14"	Fair	Fair	To be preserved; outside zone of construction impact

Emerald Isle - Assisted Living

TREE #	SPECIES	TRUNK DIAMETER (In.)	GENERAL HEALTH	STRUCTURAL INTEGRITY	RECOMMENDATIONS
124	Coast Live Oak/ <i>Quercus agrifolia</i>	16"	Good	Good; trunk leans to west	To be preserved; outside zone of construction impact
127	Coast Live Oak/ <i>Quercus agrifolia</i>	12"	Good	Good	To be preserved; outside zone of construction impact
128	Coast Live Oak/ <i>Quercus agrifolia</i>	13" @ 3'	Fair	Fair	To be preserved; outside zone of construction impact
129	Valley Oak/ <i>Quercus lobata</i>	11"	Good/Excellent	Excellent-small w/high branching	To be preserved; outside zone of construction impact
130	Valley Oak/ <i>Quercus lobata</i>	11"	Fair	Fair	To be preserved; outside zone of construction impact
131	Black Oak/ <i>Quercus kelloggii</i>	14"	Poor/Fair	Fair	To be preserved; outside zone of construction impact
132	Coast Live Oak/ <i>Quercus agrifolia</i>	8"	Good	Good	To be preserved; outside zone of construction impact
133	Black Oak/ <i>Quercus kelloggii</i>	6"/9"	Poor	Poor	To be preserved; outside zone of construction impact
134	Coast Live Oak/ <i>Quercus agrifolia</i>	9"	Fair	Fair	To be preserved; outside zone of construction impact
135	California Bay/ <i>Umbellularia californica</i>	13"	Good/Excellent	Excellent; beautiful specimen	To be preserved; outside zone of construction impact
136	Black Oak/ <i>Quercus kelloggii</i>	14"	Excellent	Excellent, low branched on north/west side	To be preserved; outside zone of construction impact
137	Black Oak/ <i>Quercus kelloggii</i>	22"	Good	Good	To be preserved; outside zone of construction impact
138	Coast Live Oak/ <i>Quercus agrifolia</i>	13"/13"/22"	Excellent	specimen. Pruning for clearance may be	To be preserved; outside zone of construction impact
139	Black Oak/ <i>Quercus kelloggii</i>	19"	Good/Excellent	Excellent- beautiful	To be preserved; outside zone of construction impact
140	Black Oak/ <i>Quercus kelloggii</i>	10"	Good/Excellent	Excellent	To be preserved; outside zone of construction impact
141	Black Oak/ <i>Quercus kelloggii</i>	15"	Good	Fair	To be preserved; outside zone of construction impact
142	Black Oak/ <i>Quercus kelloggii</i>	15"/34" @ 2.5'	Good/Excellent	Fair/Good-some decay/high canopy	To be preserved; outside zone of construction impact
143	Coast Live Oak/ <i>Quercus agrifolia</i>	9"	Fair	Fair	To be preserved; outside zone of construction impact
144	Coast Live Oak/ <i>Quercus agrifolia</i>	10"	Poor/Fair	Poor	To be preserved; outside zone of construction impact
145	Black Oak/ <i>Quercus kelloggii</i>	15"	Good/Excellent	Good	To be preserved; outside zone of construction impact
146	Black Oak/ <i>Quercus kelloggii</i>	15"	Good	Good	To be preserved; outside zone of construction impact

Emerald Isle - Assisted Living

TREE #	SPECIES	TRUNK DIAMETER (In.)	GENERAL HEALTH	STRUCTURAL INTEGRITY	RECOMMENDATIONS
147	Coast Live Oak/ <i>Quercus agrifolia</i>	14"/13"	Good/Excellent	Good	To be preserved; outside zone of construction impact
148	Coast Live Oak/ <i>Quercus agrifolia</i>	14"	Fair	Fair	To be preserved; outside zone of construction impact
149	Douglas Fir/ <i>Pseudotsuga menziesii</i>	34"	Excellent	Excellent, beautiful specimen	To be preserved; outside zone of construction impact
150	Coast Live Oak/ <i>Quercus agrifolia</i>	13"	Poor/Fair	Poor	To be preserved; outside zone of construction impact
151	Coast Live Oak/ <i>Quercus agrifolia</i>	13"	Poor/Fair	Poor/Fair	To be preserved; outside zone of construction impact
152	Black Oak/ <i>Quercus kelloggi</i>	8"	Poor/Fair	Poor	To be preserved; outside zone of construction impact
153	Coast Live Oak/ <i>Quercus agrifolia</i>	9"	Fair	Fair	To be preserved; outside zone of construction impact
154	Black Oak/ <i>Quercus kelloggi</i>	10"	Good	Good; canopy radius 13' north, 11' south, 20' west	To be preserved; outside zone of construction impact
155	Coast Live Oak/ <i>Quercus agrifolia</i>	8"	Poor/Fair	Poor	To be preserved; outside zone of construction impact
155A	Black Oak/ <i>Quercus kelloggi</i>	7"	Poor/Fair	Poor	To be preserved; outside zone of construction impact
156	Coast Live Oak/ <i>Quercus agrifolia</i>	8"	Fair	Good	To be preserved; outside zone of construction impact
157	Coast Live Oak/ <i>Quercus agrifolia</i>	6"/7"	Fair	Fair	To be preserved; outside zone of construction impact
158	Coast Live Oak/ <i>Quercus agrifolia</i>	11"/14"	Good/Excellent	Good	To be preserved; outside zone of construction impact
159	Coast Live Oak/ <i>Quercus agrifolia</i>	8"	Poor	Poor	To be preserved; outside zone of construction impact
160	Coast Live Oak/ <i>Quercus agrifolia</i>	10"/13"/13"	Poor/Fair	Fair	To be preserved; outside zone of construction impact
161	Coast Live Oak/ <i>Quercus agrifolia</i>	11"	Poor/Fair	Fair	To be preserved; outside zone of construction impact
162	Coast Live Oak/ <i>Quercus agrifolia</i>	14"	Good	Good	To be preserved; outside zone of construction impact
163	Black Oak/ <i>Quercus kelloggi</i>	7"/8"	Fair/Good	Good	To be preserved; outside zone of construction impact
164	Coast Live Oak/ <i>Quercus agrifolia</i>	15"/13"	Good/Excellent	Good	To be preserved; outside zone of construction impact
165	Coast Live Oak/ <i>Quercus agrifolia</i>	14"	Good/Excellent	Good	To be preserved; outside zone of construction impact
166	Coast Live Oak/ <i>Quercus agrifolia</i>	17"	Good	Good	To be preserved; outside zone of construction impact

Emerald Isle - Assisted Living

TREE #	SPECIES	TRUNK DIAMETER (In.)	GENERAL HEALTH	STRUCTURAL INTEGRITY	RECOMMENDATIONS
167	Black Oak/ <i>Quercus kelloggii</i>	22"	Excellent	Good	To be preserved; outside zone of construction impact
168	Douglas Fir/ <i>Pseudotsuga menziesii</i>	23"	Excellent	Excellent	To be preserved; outside zone of construction impact
169	Douglas Fir/ <i>Pseudotsuga menziesii</i>	19"	Excellent	Excellent	To be preserved; outside zone of construction impact
170	Douglas Fir/ <i>Pseudotsuga menziesii</i>	19"	Excellent	Excellent	To be preserved; outside zone of construction impact
171	Black Oak/ <i>Quercus kelloggii</i>	19"/17"	Good	Good; trunks leans west	To be preserved; outside zone of construction impact
172	California Bay/ <i>Umbellularia californica</i>	17"	Good	Good	To be preserved; outside zone of construction impact
173	Coast Live Oak/ <i>Quercus agrifolia</i>	12"	Fair/Good	Good	To be preserved; outside zone of construction impact
174	Black Oak/ <i>Quercus kelloggii</i>	17"	Good	Good; 8' - 10' clearance west	To be preserved; outside zone of construction impact
175	Coast Live Oak/ <i>Quercus agrifolia</i>	15"	Fair/Good	Good	To be preserved; outside zone of construction impact
176	Valley Oak/ <i>Quercus lobata</i>	13"	Poor/Fair	Poor	To be preserved; outside zone of construction impact
177	Coast Live Oak/ <i>Quercus agrifolia</i>	12"/10"	Fair	Fair	To be preserved; outside zone of construction impact
178	Black Oak/ <i>Quercus kelloggii</i>	19"	Excellent	Excellent	To be preserved; outside zone of construction impact
179	Coast Live Oak/ <i>Quercus agrifolia</i>	13"	Fair/Good	Good	To be preserved; outside zone of construction impact
180	Coast Live Oak/ <i>Quercus agrifolia</i>	18/17/14/12/19"	Good	Fair	To be preserved; outside zone of construction impact
181	Coast Live Oak/ <i>Quercus agrifolia</i>	22"/18"	Good	Good; trunk leans east	To be preserved; outside zone of construction impact
182	California Bay/ <i>Umbellularia californica</i>	9"/9"	Fair/Good	Good; canopy 25' south	To be preserved; outside zone of construction impact
183	Black Oak/ <i>Quercus kelloggii</i>	16"	Good/Excellent	Good; canopy radius 10' west	To be preserved; outside zone of construction impact
184	Black Oak/ <i>Quercus kelloggii</i>	11"	Fair	Good; trunk leans south/west, canopy radius 21' west	To be preserved; outside zone of construction impact
185	California Bay/ <i>Umbellularia californica</i>	14"	Poor/Fair	Fair	To be preserved; outside zone of construction impact
186	Coast Live Oak/ <i>Quercus agrifolia</i>	8"/9"	Poor/Fair	Fair	To be preserved; outside zone of construction impact
187	Black Oak/ <i>Quercus kelloggii</i>	9"	Good/Excellent	Good	To be preserved; outside zone of construction impact

Emerald Isle - Assisted Living

TREE #	SPECIES	TRUNK DIAMETER (In.)	GENERAL HEALTH	STRUCTURAL INTEGRITY	RECOMMENDATIONS
187A	Black Oak/ <i>Quercus kelloggii</i>	6"	Poor/Fair	Fair	To be preserved; outside zone of construction impact
188	Black Oak/ <i>Quercus kelloggii</i>	9"/9"	Good	Good	To be preserved; outside zone of construction impact
189	California Bay/ <i>Umbellularia californica</i>	12"	Good/Excellent	Good	To be preserved; outside zone of construction impact
190	Black Oak/ <i>Quercus kelloggii</i>	7"	Good	Good	To be preserved; outside zone of construction impact
191	California Bay/ <i>Umbellularia californica</i>	14"/10"	Good/Excellent	Good	To be preserved; outside zone of construction impact
192	California Bay/ <i>Umbellularia californica</i>	16"	Fair/Good	Fair	To be preserved; outside zone of construction impact
192A	Black Oak/ <i>Quercus kelloggii</i>	6"	Good	Good	To be preserved; outside zone of construction impact
193	Black Oak/ <i>Quercus kelloggii</i>	13"	Good/Excellent	Excellent; slight lean north/east	To be preserved; outside zone of construction impact
193A	Black Oak/ <i>Quercus kelloggii</i>	8"	Poor/Fair	Fair	To be preserved; outside zone of construction impact
193B	Black Oak/ <i>Quercus kelloggii</i>	10"	Fair/Good	Fair	To be preserved; outside zone of construction impact
194	Black Oak/ <i>Quercus kelloggii</i>	14"/14"	Good/Excellent	Good/Excellent	To be preserved; outside zone of construction impact
195	Black Oak/ <i>Quercus kelloggii</i>	8"	Fair/Good	Good	To be preserved; outside zone of construction impact
195A	Coast Live Oak/ <i>Quercus agrifolia</i>	8"	Fair	Good	To be preserved; outside zone of construction impact
196	Black Oak/ <i>Quercus kelloggii</i>	10"	Fair	Fair	To be preserved; outside zone of construction impact
197	Black Oak/ <i>Quercus kelloggii</i>	12"/13"	Fair	Fair/Good	To be preserved; outside zone of construction impact
198	Black Oak/ <i>Quercus kelloggii</i>	13"	Good	Good	To be preserved; outside zone of construction impact
199	California Bay/ <i>Umbellularia californica</i>	11"	Fair/Good	Good	To be preserved; outside zone of construction impact
200	Black Oak/ <i>Quercus kelloggii</i>	14"	Excellent	Excellent; high canopy to east	To be preserved; outside zone of construction impact
201	Coast Live Oak/ <i>Quercus agrifolia</i>	6.6"	Poor/Fair	Fair	To be preserved; outside zone of construction impact
202	Black Oak/ <i>Quercus kelloggii</i>	11"	Fair	Fair	To be preserved; outside zone of construction impact
203	California Bay/ <i>Umbellularia californica</i>	8"/6"	Fair	Fair	To be preserved; outside zone of construction impact

Emerald Isle - Assisted Living

TREE #	SPECIES	TRUNK DIAMETER (In.)	GENERAL HEALTH	STRUCTURAL INTEGRITY	RECOMMENDATIONS
204	California Bay/ <i>Umbellularia californica</i>	14"	Good	Good; 15' radius	To be preserved; outside zone of construction impact
205	Black Oak/ <i>Quercus kelloggii</i>	15"	Good	Good	To be preserved; outside zone of construction impact
206	Black Oak/ <i>Quercus kelloggii</i>	13"	Good	Good	To be preserved; outside zone of construction impact
207	Black Oak/ <i>Quercus kelloggii</i>	11"/11"	Poor/Fair	Fair	To be preserved; outside zone of construction impact
208	Coast Live Oak/ <i>Quercus agrifolia</i>	12"	Poor/Fair	Fair	To be preserved; outside zone of construction impact
209	Coast Live Oak/ <i>Quercus agrifolia</i>	9"	Poor/Fair	Fair	To be preserved; outside zone of construction impact
210	Coast Live Oak/ <i>Quercus agrifolia</i>	11"	Fair	Good	To be preserved; some impact from grading
211	Coast Live Oak/ <i>Quercus agrifolia</i>	14"	Good	Good	To be preserved; some impact from grading; clearance pruning required
212	Coast Live Oak/ <i>Quercus agrifolia</i>	12"	Fair/Good	Good	To be preserved; will need clearance pruning
213	Coast Live Oak/ <i>Quercus agrifolia</i>	12"/6"	Good	Good	To be preserved; outside zone of construction impact
214	Coast Live Oak/ <i>Quercus agrifolia</i>	9"	Fair/Good	Good	To be preserved; outside zone of construction impact
215	California Bay/ <i>Umbellularia californica</i>	10"	Good	Good	To be preserved; outside zone of construction impact
215A	California Bay/ <i>Umbellularia californica</i>	9"/10"/11"	Good	Good	To be preserved; outside zone of construction impact
216	Coast Live Oak/ <i>Quercus agrifolia</i>	9"	Good	Good	To be preserved; outside zone of construction impact
217	Valley Oak/ <i>Quercus lobata</i>	9"	Fair/Good	Good	To be preserved; outside zone of construction impact
218	California Bay/ <i>Umbellularia californica</i>	11"	Good	Good	To be preserved; outside zone of construction impact
218B	Black Oak/ <i>Quercus kelloggii</i>	9"	Good/Excellent	Excellent	To be preserved; outside zone of construction impact
219	Valley Oak/ <i>Quercus lobata</i>	11"	Good/Excellent	Excellent	To be preserved; outside zone of construction impact
220	Black Oak/ <i>Quercus kelloggii</i>	11"	Good	Good	To be preserved; outside zone of construction impact
221	California Bay/ <i>Umbellularia californica</i>	8"/8"/10"	Good	Good	To be preserved; outside zone of construction impact
222	Coast Live Oak/ <i>Quercus agrifolia</i>	15"	Fair	Good	To be preserved; outside zone of construction impact

Emerald Isle - Assisted Living

TREE #	SPECIES	TRUNK DIAMETER (In.)	GENERAL HEALTH	STRUCTURAL INTEGRITY	RECOMMENDATIONS
223	Coast Live Oak/ <i>Quercus agrifolia</i>	9"	Poor/Fair	Fair	To be preserved; outside zone of construction impact
223A	Coast Live Oak/ <i>Quercus agrifolia</i>	23"	Fair/Good	Good	To be preserved; outside zone of construction impact
224	Black Oak/ <i>Quercus kelloggi</i>	14"	Good	Good	To be preserved; outside zone of construction impact
225	Black Oak/ <i>Quercus kelloggi</i>	9"	Good	Good	To be preserved; outside zone of construction impact
226	Coast Live Oak/ <i>Quercus agrifolia</i>	24"	Good/Excellent	Good	To be preserved; outside zone of construction impact
227	Coast Live Oak/ <i>Quercus agrifolia</i>	9"	Good	Good	To be preserved; outside zone of construction impact
228	Coast Live Oak/ <i>Quercus agrifolia</i>	9"	Good/Excellent	Good	To be preserved; outside zone of construction impact
229	Black Oak/ <i>Quercus kelloggi</i>	19"	Excellent	Excellent	To be preserved; outside zone of construction impact
230	Coast Live Oak/ <i>Quercus agrifolia</i>	15"	Excellent	Excellent	To be preserved; outside zone of construction impact
231	Coast Live Oak/ <i>Quercus agrifolia</i>	20"	Good	Good; low branching	To be preserved
232	Coast Live Oak/ <i>Quercus agrifolia</i>	17"	Poor	Poor; extensive decay	To be preserved
233	Olive/ <i>Olea europaea</i>	8" @ 3'	Fair	Good	To be preserved; protect during grading/rock placement
234	Coast Live Oak/ <i>Quercus agrifolia</i>	22"	Fair	Good; canopy radius 15' south, 10' west	To be preserved; some impact from grading; clearance pruning required
235	Coast Live Oak/ <i>Quercus agrifolia</i>	19"	Excellent	Excellent; canopy radius 20' west, 15' south	To be preserved
236	California Bay/ <i>Umbellularia californica</i>	8"	Excellent	Excellent	To be preserved; outside zone of construction impact
236A	California Bay/ <i>Umbellularia californica</i>	5"	Excellent	Excellent	To be preserved; outside zone of construction impact
237	Coast Live Oak/ <i>Quercus agrifolia</i>	13"	Good	Excellent	grading/rock placement; clearance pruning required
238	Coast Live Oak/ <i>Quercus agrifolia</i>	25"	Fair	Poor	To be removed
239	Coast Live Oak/ <i>Quercus agrifolia</i>	7"	Good	Good; trunk leans east, canopy radius 15' east	To be preserved
240A	Black Oak/ <i>Quercus kelloggi</i>	6"	Fair	Poor; trunk leans north/west	To be preserved; some impact from grading; will need clearance pruning
241	Coast Live Oak/ <i>Quercus agrifolia</i>	9"	Good	Good	To be removed

Emerald Isle - Assisted Living

TREE #	SPECIES	TRUNK DIAMETER (In.)	GENERAL HEALTH	STRUCTURAL INTEGRITY	RECOMMENDATIONS
242	Coast Live Oak/ <i>Quercus agrifolia</i>	12"	Good	Good; trunk leans south/east	To be removed
243	Coast Live Oak/ <i>Quercus agrifolia</i>	8"	Good	Fair	To be removed
244	Coast Live Oak/ <i>Quercus agrifolia</i>	16/13"	Fair/Good	Good; canopy radius 30' east, 14' north	To be removed
245	Coast Live Oak/ <i>Quercus agrifolia</i>	21" @ 2'	Fair	Good	To be removed
246	Coast Live Oak/ <i>Quercus agrifolia</i>	12/17"	Excellent	Excellent; clearance 8' west, 12' east	To be removed
247	Coast Live Oak/ <i>Quercus agrifolia</i>	26" @ 2'	Good	Fair/Good	To be removed
248	Black Oak/ <i>Quercus kelloggii</i>	15"	Excellent	Excellent	To be removed
249	Coast Live Oak/ <i>Quercus agrifolia</i>	17"	Good	Fair	To be removed
250	Coast Live Oak/ <i>Quercus agrifolia</i>	9"	Fair	Fair	To be removed
251	Coast Live Oak/ <i>Quercus agrifolia</i>	14" @ 3'	Good	Good	To be removed
252	California Bay/ <i>Umbellularia californica</i>	9/13/13"	Good	Fair	To be removed
253	Coast Live Oak/ <i>Quercus agrifolia</i>	20"	Fair	Fair; large cavity on E side	To be removed
254	Coast Live Oak/ <i>Quercus agrifolia</i>	14"	Good	Good; canopy radius 10' east, 10' west	To be removed
255	Coast Live Oak/ <i>Quercus agrifolia</i>	7/11"	Good	Good	To be removed
256	Coast Live Oak/ <i>Quercus agrifolia</i>	10"	Fair	Fair; s-shaped trunk west to south/east	To be removed
257	Coast Live Oak/ <i>Quercus agrifolia</i>	16"	Fair	Fair; dead stem	To be removed
257A	Black Oak/ <i>Quercus kelloggii</i>	8"	Poor/Fair	Fair	To be removed
258	Black Oak/ <i>Quercus kelloggii</i>	9"/9"	Fair	Fair	To be preserved
259	California Bay/ <i>Umbellularia californica</i>	9"	Fair	Fair	To be preserved
260	Coast Live Oak/ <i>Quercus agrifolia</i>	13"	Good	Good	To be preserved
261	Coast Live Oak/ <i>Quercus agrifolia</i>	10"	Poor/Fair	Fair	To be preserved; some impact from grading

Emerald Isle - Assisted Living

TREE #	SPECIES	TRUNK DIAMETER (In.)	GENERAL HEALTH	STRUCTURAL INTEGRITY	RECOMMENDATIONS
262	Coast Live Oak/ <i>Quercus agrifolia</i>	11"	Poor/Fair	Fair; cavity in base of trunk	To be removed
263	California Bay/ <i>Umbellularia californica</i>	12" @ 3'	Fair	Good	To be removed
264	Black Oak/ <i>Quercus kelloggii</i>	14"	Good	Good	To be removed
265	Coast Live Oak/ <i>Quercus agrifolia</i>	19"	Excellent	Excellent	To be removed
266	Black Oak/ <i>Quercus kelloggii</i>	25" @ 2'	Good	Fair	To be removed
267	Black Oak/ <i>Quercus kelloggii</i>	13"	Good	Good	To be preserved
268	Coast Live Oak/ <i>Quercus agrifolia</i>	18"	Good	Good	To be preserved; prune decayed branch
269	Black Oak/ <i>Quercus kelloggii</i>	20" @ 3'	Fair/Good	Fair	To be preserved
270	California Bay/ <i>Umbellularia californica</i>	12"/5"	Good	north & south, 7' east & west	To be preserved
270A	Black Oak/ <i>Quercus kelloggii</i>	8"/8"	Fair	Fair	To be preserved
270B	Coast Live Oak/ <i>Quercus agrifolia</i>	15"	Fair	Fair	To be preserved
271	Black Oak/ <i>Quercus kelloggii</i>	13"	Good/Excellent	north/east, canopy radius 15' south	To be preserved; outside zone of construction impact
272	Coast Live Oak/ <i>Quercus agrifolia</i>	10"	Good	Good; canopy radius 25' north/east	To be preserved; outside zone of construction impact
273	Coast Live Oak/ <i>Quercus agrifolia</i>	10"/17"	Fair/Good	Fair; canopy radius 20' north/east	To be preserved; outside zone of construction impact
274	Black Oak/ <i>Quercus kelloggii</i>	9"	Fair/Good	Fair	To be preserved; outside zone of construction impact
275	Black Oak/ <i>Quercus kelloggii</i>	7"	Good	Good	To be preserved; outside zone of construction impact
276	Black Oak/ <i>Quercus kelloggii</i>	10"	Good/Excellent	Good	To be preserved; outside zone of construction impact
277	Black Oak/ <i>Quercus kelloggii</i>	7"	Good	Good	To be preserved; outside zone of construction impact
278	Black Oak/ <i>Quercus kelloggii</i>	10"	Good	Good	To be preserved; outside zone of construction impact
279	Black Oak/ <i>Quercus kelloggii</i>	7"	Poor/Fair	Fair	To be preserved; outside zone of construction impact
280	Black Oak/ <i>Quercus kelloggii</i>	9"	Good/Excellent	Good	To be preserved; outside zone of construction impact

Emerald Isle - Assisted Living

TREE #	SPECIES	TRUNK DIAMETER (In.)	GENERAL HEALTH	STRUCTURAL INTEGRITY	RECOMMENDATIONS
281	Black Oak/ <i>Quercus kelloggii</i>	8"	Good	Good	To be preserved; outside zone of construction impact
281A	Black Oak/ <i>Quercus kelloggii</i>	10"	Good/Excellent	Good	To be preserved; outside zone of construction impact
282	Coast Live Oak/ <i>Quercus agrifolia</i>	9"	Fair	Good	To be preserved; outside zone of construction impact
283	Black Oak/ <i>Quercus kelloggii</i>	9"	Good	Good	To be preserved
284	California Bay/ <i>Umbellularia californica</i>	10"	Good	Good	To be preserved
285	Coast Live Oak/ <i>Quercus agrifolia</i>	5"	Poor/Fair	Fair	To be preserved
286	Black Oak/ <i>Quercus kelloggii</i>	10/11/14"	Fair	Fair	To be preserved
287	Black Oak/ <i>Quercus kelloggii</i>	14"	Good	Excellent	To be preserved
288	Coast Live Oak/ <i>Quercus agrifolia</i>	16"	Good	Fair/Good	To be preserved
289	California Bay/ <i>Umbellularia californica</i>	9" @ 2.5'	Fair	Good	To be removed
290	Black Oak/ <i>Quercus kelloggii</i>	14"	Excellent	Excellent	To be preserved; will require clearance pruning; nice specimen
291	Coast Live Oak/ <i>Quercus agrifolia</i>	8"	Good	Good	To be preserved; outside zone of construction impact
292	Black Oak/ <i>Quercus kelloggii</i>	9"	Good	Good	To be preserved; outside zone of construction impact
293	Black Oak/ <i>Quercus kelloggii</i>	6"	Fair/Good	Fair	To be preserved; outside zone of construction impact
294	Black Oak/ <i>Quercus kelloggii</i>	7"	Fair	Fair	To be preserved; outside zone of construction impact
295	Coast Live Oak/ <i>Quercus agrifolia</i>	8"	Fair	Fair	To be preserved; outside zone of construction impact
296	Coast Live Oak/ <i>Quercus agrifolia</i>	10"	Excellent	Excellent	To be preserved; outside zone of construction impact
296 A	Coast Live Oak/ <i>Quercus agrifolia</i>	5"	Poor/Fair	Fair	To be preserved; outside zone of construction impact
297	Black Oak/ <i>Quercus kelloggii</i>	8"	Good	Good	To be preserved; outside zone of construction impact
298	Black Oak/ <i>Quercus kelloggii</i>	6"/6"	Good	Good	To be preserved; outside zone of construction impact
299	Black Oak/ <i>Quercus kelloggii</i>	7"	Good	Good	To be preserved; outside zone of construction impact

Emerald Isle - Assisted Living

TREE #	SPECIES	TRUNK DIAMETER (In.)	GENERAL HEALTH	STRUCTURAL INTEGRITY	RECOMMENDATIONS
300	Black Oak/ <i>Quercus kelloggii</i>	7"	Good	Good	To be preserved; outside zone of construction impact
301	Coast Live Oak/ <i>Quercus agrifolia</i>	12"/7"	Fair/Good	Good	To be preserved; outside zone of construction impact
302	Black Oak/ <i>Quercus kelloggii</i>	11"	Excellent	Excellent; canopy radius 20' south	To be preserved; outside zone of construction impact
303	California Bay/ <i>Umbellularia californica</i>	13"	Good/Excellent	Good	To be preserved; outside zone of construction impact
304	Black Oak/ <i>Quercus kelloggii</i>	15/5"	Good/Excellent	Good	To be preserved; outside zone of construction impact
305	Black Oak/ <i>Quercus kelloggii</i>	8"	Fair/Good	Fair	To be preserved; outside zone of construction impact
306	Coast Live Oak/ <i>Quercus agrifolia</i>	8"	Good	Good	To be preserved; outside zone of construction impact
307	Coast Live Oak/ <i>Quercus agrifolia</i>	11"	Good/Excellent	Good	To be preserved; outside zone of construction impact
308	Coast Live Oak/ <i>Quercus agrifolia</i>	5.9"	Fair/Good	Fair	To be preserved; outside zone of construction impact
309	Coast Live Oak/ <i>Quercus agrifolia</i>	7"	Poor	Poor	To be preserved; outside zone of construction impact
310	Coast Live Oak/ <i>Quercus agrifolia</i>	10"	Good	Good; trunk leans south/west	To be preserved; outside zone of construction impact
311	Coast Live Oak/ <i>Quercus agrifolia</i>	8" @ 2.5'	Good	Good	To be preserved; outside zone of construction impact
312	Coast Live Oak/ <i>Quercus agrifolia</i>	6"	Fair	Fair	To be preserved
313	Buckeye/ <i>Aesculus californica</i>	8"	Good	Good; canopy radius 15' north	To be preserved
315	Black Oak/ <i>Quercus kelloggii</i>	22"	Fair/Good	Good	To be preserved; nice specimen
316	Coast Live Oak/ <i>Quercus agrifolia</i>	12"	Good	Good	To be preserved; some impact from grading; will need clearance pruning
317	Coast Live Oak/ <i>Quercus agrifolia</i>	10"	Fair	Good	To be preserved
318	Coast Live Oak/ <i>Quercus agrifolia</i>	8/6"	Good	Good	To be preserved
319	Buckeye/ <i>Aesculus californica</i>	6"/6"/7"	Poor	Poor	To be preserved; damaged
320	California Bay/ <i>Umbellularia californica</i>	13"/13"	Fair	Good	To be preserved; damaged
320 A	California Bay/ <i>Umbellularia californica</i>	8"	Fair/Good	Fair	To be preserved

Emerald Isle - Assisted Living

TREE #	SPECIES	TRUNK DIAMETER (In.)	GENERAL HEALTH	STRUCTURAL INTEGRITY	RECOMMENDATIONS
321	Coast Live Oak/ <i>Quercus agrifolia</i>	10"	Good	Fair	To be preserved; outside zone of construction impact
322	Coast Live Oak/ <i>Quercus agrifolia</i>	10"	Good	Good	To be preserved; outside zone of construction impact
323	Coast Live Oak/ <i>Quercus agrifolia</i>	10"	Good	Good	To be preserved; outside zone of construction impact
324	Coast Live Oak/ <i>Quercus agrifolia</i>	9"	Good	Fair/Good	To be preserved; damaged
326	Coast Live Oak/ <i>Quercus agrifolia</i>	8"	Good	Good; trunk leans south/west	To be preserved; outside zone of construction impact
327	Coast Live Oak/ <i>Quercus agrifolia</i>	10"	Fair	Fair	To be preserved
328	Coast Live Oak/ <i>Quercus agrifolia</i>	11"	Good	Good	To be preserved; some impact from grading
330	Coast Live Oak/ <i>Quercus agrifolia</i>	17"	Excellent	Excellent; canopy radius 20' east	To be preserved; extensive clearance pruning
331	Coast Live Oak/ <i>Quercus agrifolia</i>	9"	Fair/Good	Good	To be removed
332	Coast Live Oak/ <i>Quercus agrifolia</i>	13"	Good	Poor	To be removed
333	Coast Live Oak/ <i>Quercus agrifolia</i>	9"	Excellent	Excellent	To be removed
335	Coast Live Oak/ <i>Quercus agrifolia</i>	19"	Excellent	Good; trunk leans east	To be removed
336	California Bay/ <i>Umbellularia californica</i>	6"	Good	Good	To be removed
337	Coast Live Oak/ <i>Quercus agrifolia</i>	9"	Poor	Fair	To be removed
338	California Bay/ <i>Umbellularia californica</i>	12"/7"/4"	Excellent	Excellent	To be removed
339	California Bay/ <i>Umbellularia californica</i>	8" @ 3'	Good	Good, though damaged	To be removed
340	Coast Live Oak/ <i>Quercus agrifolia</i>	21"	Good	Excellent	To be removed
341	California Bay/ <i>Umbellularia californica</i>	7/5/5"	Good	Fair; multiple trunks	To be removed
342	Coast Live Oak/ <i>Quercus agrifolia</i>	7"	Good	Good	To be removed
343	Coast Live Oak/ <i>Quercus agrifolia</i>	17"	Fair	Poor	To be removed; large cavity on S side
344	California Bay/ <i>Umbellularia californica</i>	5/5/7"	Excellent	Excellent	To be removed

Emerald Isle - Assisted Living

TREE #	SPECIES	TRUNK DIAMETER (In.)	GENERAL HEALTH	STRUCTURAL INTEGRITY	RECOMMENDATIONS
345	California Bay/ <i>Umbellularia californica</i>	5"/6"	Good	Good	To be removed
346	California Bay/ <i>Umbellularia californica</i>	4/4/5/5/8"	Good	Good	To be removed
347	California Bay/ <i>Umbellularia californica</i>	4/5/5/6/6"	Excellent	Excellent	To be removed
348	California Bay/ <i>Umbellularia californica</i>	4/5/6"	Good	Good	To be removed
349	Coast Live Oak/ <i>Quercus agrifolia</i>	17"	Good	Good; canopy radius 20' north	To be removed
350	Coast Live Oak/ <i>Quercus agrifolia</i>	11"	Fair	Poor	To be removed
351	Coast Live Oak/ <i>Quercus agrifolia</i>	10"	Good	Good	To be removed
352	Coast Live Oak/ <i>Quercus agrifolia</i>	16"	Good	Good	To be removed
353	Coast Live Oak/ <i>Quercus agrifolia</i>	15"	Excellent	Good	To be removed
354	Black Oak/ <i>Quercus kelloggii</i>	26"	Fair	Fair; trunk leans west	To be preserved
355	California Bay/ <i>Umbellularia californica</i>	5/19"	Fair	Fair; canopy radius 15' south	To be removed
356	California Bay/ <i>Umbellularia californica</i>	15"	Good	Good; canopy radius 15' south, low branching	To be removed
357	Coast Live Oak/ <i>Quercus agrifolia</i>	8"	Fair	Fair	To be removed
358	Coast Live Oak/ <i>Quercus agrifolia</i>	11	Good	Good; slight lean north	To be removed
359	Coast Live Oak/ <i>Quercus agrifolia</i>	12"	Fair	Fair; extensive decay	To be removed
360	Coast Live Oak/ <i>Quercus agrifolia</i>	19"	Good	Fair	To be removed
361	Coast Live Oak/ <i>Quercus agrifolia</i>	15"	Good/Excellent	Good	To be removed
362	Coast Live Oak/ <i>Quercus agrifolia</i>	17"	Good/Excellent	Good; trunk leans south/west, canopy radius 25' south	To be removed
363	Coast Live Oak/ <i>Quercus agrifolia</i>	9"	Fair	Fair	To be removed
364	California Bay/ <i>Umbellularia californica</i>	15"/10"/7"	Fair	Fair/Good	To be removed
365	Coast Live Oak/ <i>Quercus agrifolia</i>	23"	Excellent	Excellent	To be removed

Emerald Isle - Assisted Living

TREE #	SPECIES	TRUNK DIAMETER (In.)	GENERAL HEALTH	STRUCTURAL INTEGRITY	RECOMMENDATIONS
366	Valley Oak/ <i>Quercus lobata</i>	19"	Fair	Fair	To be removed
367	Black Oak/ <i>Quercus kelloggii</i>	23"	Good/Excellent	Good; canopy radius 20' north	To be removed
368	Coast Live Oak/ <i>Quercus agrifolia</i>	17"	Good	Good; trunk leans west	To be removed
369	Coast Live Oak/ <i>Quercus agrifolia</i>	12"	Good	Fair	To be removed
370	Coast Live Oak/ <i>Quercus agrifolia</i>	17"	Good	Fair	To be removed
371	California Bay/ <i>Umbellularia californica</i>	6"/5"	Good	Good	To be removed
372	California Bay/ <i>Umbellularia californica</i>	6"	Fair	Fair	To be removed
373	California Bay/ <i>Umbellularia californica</i>	7"	Good	Good	To be removed
374	California Bay/ <i>Umbellularia californica</i>	5"/4"	Good/Excellent	Excellent	To be removed
375	Coast Live Oak/ <i>Quercus agrifolia</i>	17"	Good/Excellent	Excellent	To be removed
376	California Bay/ <i>Umbellularia californica</i>	6/6/7"	Fair	Fair/Good	To be removed
377	California Bay/ <i>Umbellularia californica</i>	5/6"	Fair	Good	To be removed
378	California Bay/ <i>Umbellularia californica</i>	5/7"	Good	Good	To be preserved
379	Coast Live Oak/ <i>Quercus agrifolia</i>	15"	Good	Fair; trunk leans south	To be removed
380	Coast Live Oak/ <i>Quercus agrifolia</i>	4/5/11"	Good	Excellent	To be removed
381	California Bay/ <i>Umbellularia californica</i>	6/7"	Good	Excellent	To be removed
382	California Bay/ <i>Umbellularia californica</i>	5/6"	Good	Excellent	To be removed
383	Coast Live Oak/ <i>Quercus agrifolia</i>	14"	Fair	Fair	To be removed
384	Coast Live Oak/ <i>Quercus agrifolia</i>	14/16"	Fair	Fair; canopy radius 10' south	To be removed
385	Coast Live Oak/ <i>Quercus agrifolia</i>	14"	Fair	Good	To be removed
387	Black Oak/ <i>Quercus kelloggii</i>	16"	Fair	Fair	To be removed

Emerald Isle - Assisted Living

TREE #	SPECIES	TRUNK DIAMETER (In.)	GENERAL HEALTH	STRUCTURAL INTEGRITY	RECOMMENDATIONS
388	California Bay/ <i>Umbellularia californica</i>	13/26" @ 3'	Fair/Good	Good	To be removed
389	Black Oak/ <i>Quercus kelloggii</i>	13" @ 3'	Fair/Good	Fair/Good	To be removed
390	California Bay/ <i>Umbellularia californica</i>	11"	Good	Good	To be removed
391	Black Oak/ <i>Quercus kelloggii</i>	11"	Good	Good	To be removed
392	Black Oak/ <i>Quercus kelloggii</i>	15"	Good	Good	To be removed
393	Coast Live Oak/ <i>Quercus agrifolia</i>	9"	Fair	Fair	To be removed
394	California Bay/ <i>Umbellularia californica</i>	4/7/16"	Good	Good	To be removed
395	Coast Live Oak/ <i>Quercus agrifolia</i>	8/19"	Excellent	Excellent	To be removed
396	Coast Live Oak/ <i>Quercus agrifolia</i>	19" @ 3'	Excellent	Excellent	To be removed
397	Coast Live Oak/ <i>Quercus agrifolia</i>	12"	Poor	Good	To be removed
398	California Bay/ <i>Umbellularia californica</i>	12"	Good	Good	To be removed
399	California Bay/ <i>Umbellularia californica</i>	16"	Poor	Poor; extensive decay	To be removed
400	Coast Live Oak/ <i>Quercus agrifolia</i>	11" @ 4'	Good	Good	To be removed
401	Coast Live Oak/ <i>Quercus agrifolia</i>	20"	Good	Excellent	To be removed
402	California Bay/ <i>Umbellularia californica</i>	12"	Fair	Fair	To be removed
403	California Bay/ <i>Umbellularia californica</i>	19" @ 2'	Fair	Fair	To be removed
404	Coast Live Oak/ <i>Quercus agrifolia</i>	9"	Good	Good	To be removed
405	Coast Live Oak/ <i>Quercus agrifolia</i>	22" @ 4'	Good	Good	To be removed
406	California Bay/ <i>Umbellularia californica</i>	11"	Poor	Poor	To be removed
407	California Bay/ <i>Umbellularia californica</i>	6/26"	Fair	Fair/Good	To be removed
408	Coast Live Oak/ <i>Quercus agrifolia</i>	11" @ 4'	Good	Fair	To be removed

Emerald Isle - Assisted Living

TREE #	SPECIES	TRUNK DIAMETER (In.)	GENERAL HEALTH	STRUCTURAL INTEGRITY	RECOMMENDATIONS
409	Coast Live Oak/ <i>Quercus agrifolia</i>	16"	Fair	Good	To be removed
410	Coast Live Oak/ <i>Quercus agrifolia</i>	13"	Good	Good	To be removed
411	Coast Live Oak/ <i>Quercus agrifolia</i>	15"	Good	Good	To be removed
412	Coast Live Oak/ <i>Quercus agrifolia</i>	14"	Good	Good	To be removed
413	Black Oak/ <i>Quercus kelloggii</i>	14"	Good	Good; good clearance north	To be removed
415	California Bay/ <i>Umbellularia californica</i>	17"	Poor	Fair/Poor; decay column	To be removed
416	California Bay/ <i>Umbellularia californica</i>	13"	Fair	Fair	To be removed
417	Black Oak/ <i>Quercus kelloggii</i>	13"	Good	Good	To be removed
418	Black Oak/ <i>Quercus kelloggii</i>	10"	Fair	Poor	To be removed
419	Coast Live Oak/ <i>Quercus agrifolia</i>	9"	Fair	Fair	To be removed
420	Coast Live Oak/ <i>Quercus agrifolia</i>	13"/22"	Fair	Fair	To be removed
422	Black Oak/ <i>Quercus kelloggii</i>	12	Good	Good	To be removed
423	Black Oak/ <i>Quercus kelloggii</i>	8"	Fair	Fair	To be removed
425	Coast Live Oak/ <i>Quercus agrifolia</i>	7"	Poor	Poor; decay column	To be removed
426	Black Oak/ <i>Quercus kelloggii</i>	14"	Good	Good; low branching north/east	To be removed
427	Coast Live Oak/ <i>Quercus agrifolia</i>	13" @ 3'	Fair	Good	To be removed
428	Coast Live Oak/ <i>Quercus agrifolia</i>	18"	Excellent	Excellent	To be removed
429	Coast Live Oak/ <i>Quercus agrifolia</i>	12"	Excellent	Excellent	To be removed
430	Coast Live Oak/ <i>Quercus agrifolia</i>	19"	Good	Good; low lateral; canopy radius 13' east	To be removed
431	Valley Oak/ <i>Quercus lobata</i>	13"	Fair	Poor	To be preserved
432	California Bay/ <i>Umbellularia californica</i>	20"	Good	Good; low clearance	To be preserved

Emerald Isle - Assisted Living

TREE #	SPECIES	TRUNK DIAMETER (In.)	GENERAL HEALTH	STRUCTURAL INTEGRITY	RECOMMENDATIONS
433	Coast Live Oak/ <i>Quercus agrifolia</i>	6"/5"	Good/Excellent	Good; young tree	To be preserved
434	Coast Live Oak/ <i>Quercus agrifolia</i>	12"	Fair	Fair; canopy radius 12' south/east	To be preserved
435	Black Oak/ <i>Quercus kelloggii</i>	11"	Good	Good	To be preserved; outside zone of construction impact
436	Valley Oak/ <i>Quercus lobata</i>	12"	Good	Good; canopy radius 15' south, good clearance	To be preserved; outside zone of construction impact
437	Coast Live Oak/ <i>Quercus agrifolia</i>	11"	Good	Good	To be preserved
438	Valley Oak/ <i>Quercus lobata</i>	9"	Fair/Good	Good	To be preserved
439	Coast Live Oak/ <i>Quercus agrifolia</i>	12"	Fair	south/west, canopy radius 15' south/west	To be preserved
440	Coast Live Oak/ <i>Quercus agrifolia</i>	8"	Good	Good; canopy radius 18' west	To be preserved
441	Black Oak/ <i>Quercus kelloggii</i>	14"	Good	Good	To be preserved
442	Coast Live Oak/ <i>Quercus agrifolia</i>	5"	Fair	Fair	To be preserved
443	Coast Live Oak/ <i>Quercus agrifolia</i>	4/8/11"	Good	Good	To be preserved; clearance pruning required
444	Coast Live Oak/ <i>Quercus agrifolia</i>	22" @ 3'	Good	Good	To be preserved; will need clearance pruning
445	Black Oak/ <i>Quercus kelloggii</i>	11"	Good	Good; trunk leans NW	To be preserved; outside zone of construction impact
446	Valley Oak/ <i>Quercus lobata</i>	16"	Fair	Fair; trunk leans west, good clearance north/east	To be preserved; outside zone of construction impact
447	Coast Live Oak/ <i>Quercus agrifolia</i>	7"	Fair	Fair; clearance 5' south	To be preserved; outside zone of construction impact
448	Coast Live Oak/ <i>Quercus agrifolia</i>	6"	Fair	Fair; clearance 5' east	To be preserved; outside zone of construction impact
449	Coast Live Oak/ <i>Quercus agrifolia</i>	7"	Fair	Fair; clearance 12' north/east	To be preserved; outside zone of construction impact
450	Black Oak/ <i>Quercus kelloggii</i>	13"	Excellent	Excellent	To be preserved; outside zone of construction impact
451	Black Oak/ <i>Quercus kelloggii</i>	13"	Good	Good	To be preserved; outside zone of construction impact
452	Black Oak/ <i>Quercus kelloggii</i>	11"	Fair	Fair	To be preserved; outside zone of construction impact
453	Valley Oak/ <i>Quercus lobata</i>	11"	Good	Good	To be preserved; outside zone of construction impact

Emerald Isle - Assisted Living

TREE #	SPECIES	TRUNK DIAMETER (In.)	GENERAL HEALTH	STRUCTURAL INTEGRITY	RECOMMENDATIONS
454	Black Oak/ <i>Quercus kelloggii</i>	10"	Good/Excellent	Good	To be preserved; outside zone of construction impact
455	Black Oak/ <i>Quercus kelloggii</i>	15"	Good/Excellent	Good	To be preserved; outside zone of construction impact
456	Black Oak/ <i>Quercus kelloggii</i>	11"/13"	Fair	Fair	To be preserved; outside zone of construction impact
457	Black Oak/ <i>Quercus kelloggii</i>	7"	Poor	Poor	To be preserved; outside zone of construction impact
458	Black Oak/ <i>Quercus kelloggii</i>	13"	Good/Excellent	Good	To be preserved; outside zone of construction impact
459	Coast Live Oak/ <i>Quercus agrifolia</i>	16"/10"/16"	Poor	Poor	To be preserved
460	Black Oak/ <i>Quercus kelloggii</i>	11"	Poor	Poor	To be removed
461	Valley Oak/ <i>Quercus lobata</i>	12"	Good	Good	To be removed
462	Coast Live Oak/ <i>Quercus agrifolia</i>	14"	Good	Good	To be removed
463	California Bay/ <i>Umbellularia californica</i>	9"/7"/10"	Good	Good	To be removed
464	Coast Live Oak/ <i>Quercus agrifolia</i>	9"	Fair	Fair	To be removed
465	Valley Oak/ <i>Quercus lobata</i>	19"	Fair	Fair	To be removed
466	Black Oak/ <i>Quercus kelloggii</i>	11"	Fair	Fair	To be removed
467	California Bay/ <i>Umbellularia californica</i>	14"	Fair	Good	To be removed
468	Coast Live Oak/ <i>Quercus agrifolia</i>	8/11"	Excellent	Good	To be removed
469	Valley Oak/ <i>Quercus lobata</i>	17"	Fair	Good	To be removed
470	Buckeye/ <i>Aesculus californica</i>	5/6/8"	Fair	Fair	To be removed
471	Valley Oak/ <i>Quercus lobata</i>	9"	Fair	Good	To be removed
472	California Bay/ <i>Umbellularia californica</i>	5/6/6"	Excellent	Excellent	To be removed
473	California Bay/ <i>Umbellularia californica</i>	12"	Fair	Poor	To be removed
474	Coast Live Oak/ <i>Quercus agrifolia</i>	15" @ 3'	Good	Excellent	To be removed

Emerald Isle - Assisted Living

TREE #	SPECIES	TRUNK DIAMETER (In.)	GENERAL HEALTH	STRUCTURAL INTEGRITY	RECOMMENDATIONS
475	Coast Live Oak/ <i>Quercus agrifolia</i>	13"	Good	Good; trunk leans south	To be removed
476	Valley Oak/ <i>Quercus lobata</i>	13/14"	Fair	Fair	To be removed
477	Black Oak/ <i>Quercus kelloggii</i>	9"	Fair	Fair	To be removed
478	Black Oak/ <i>Quercus kelloggii</i>	10"	Fair	Fair	To be removed
479	California Bay/ <i>Umbellularia californica</i>	7"	Good	Good	To be removed
480	Black Oak/ <i>Quercus kelloggii</i>	11"	Fair	Good	To be removed
481	Black Oak/ <i>Quercus kelloggii</i>	6"	Poor	Poor	To be removed
482	Valley Oak/ <i>Quercus lobata</i>	12"	Fair	Good	To be removed
484	Buckeye/ <i>Aesculus californica</i>	5"	Poor	Poor	To be preserved
485	Valley Oak/ <i>Quercus lobata</i>	18"	Fair	Good	To be preserved; some impact from construction
486	Buckeye/ <i>Aesculus californica</i>	6"	Good	Good; trunk leans south/east	To be preserved
487	Valley Oak/ <i>Quercus lobata</i>	14"	Fair	Good	To be removed
488	Coast Live Oak/ <i>Quercus agrifolia</i>	9"	Fair	Fair	To be removed
489	California Bay/ <i>Umbellularia californica</i>	10"/10"	Good	Good	To be preserved; some impact from construction
490	Buckeye/ <i>Aesculus californica</i>	6"/5"	Fair	Poor	To be preserved
491	Valley Oak/ <i>Quercus lobata</i>	5"	Fair	Fair	To be preserved
492	Valley Oak/ <i>Quercus lobata</i>	5"	Fair	Fair	To be preserved
494	Coast Live Oak/ <i>Quercus agrifolia</i>	9" @ 3.5'	Fair	Good	To be removed
495	California Bay/ <i>Umbellularia californica</i>	14/6/10"	Excellent	Excellent	To be preserved; will need clearance pruning
496	Coast Live Oak/ <i>Quercus agrifolia</i>	9"/11"	Fair	Good	To be preserved
497	Coast Live Oak/ <i>Quercus agrifolia</i>	5"/7"	Good	Good	To be preserved

Emerald Isle - Assisted Living

TREE #	SPECIES	TRUNK DIAMETER (In.)	GENERAL HEALTH	STRUCTURAL INTEGRITY	RECOMMENDATIONS
498	Coast Live Oak/ <i>Quercus agrifolia</i>	7"	Fair	Fair	To be preserved
499	Coast Live Oak/ <i>Quercus agrifolia</i>	5"/12"	Excellent	Excellent	To be preserved; outside zone of construction impact
500	Blue Oak/ <i>Quercus douglasii</i>	12"	Good	Good; trunk leans south/west	To be preserved; outside zone of construction impact
501	Blue Oak/ <i>Quercus douglasii</i>	8'	Fair	Fair	To be preserved; outside zone of construction impact
502	Black Oak/ <i>Quercus kelloggii</i>	19"	Excellent	Excellent	To be preserved; outside zone of construction impact
503	Black Oak/ <i>Quercus kelloggii</i>	11"/11"	Poor	Poor	To be preserved; outside zone of construction impact
504	Coast Live Oak/ <i>Quercus agrifolia</i>	13"	Fair	Fair	To be preserved; outside zone of construction impact
505	Coast Live Oak/ <i>Quercus agrifolia</i>	19"/18"	Good	Fair; canopy due south	To be preserved; outside zone of construction impact
506	Valley Oak/ <i>Quercus lobata</i>	16"	Good	Good	To be preserved; outside zone of construction impact
507	Black Oak/ <i>Quercus kelloggii</i>	10"	Good	Good	To be preserved; outside zone of construction impact
508	Valley Oak/ <i>Quercus lobata</i>	10"	Good	Good	To be preserved; outside zone of construction impact
509	Black Oak/ <i>Quercus kelloggii</i>	16"	Excellent	Excellent	To be preserved; outside zone of construction impact
510	Coast Live Oak/ <i>Quercus agrifolia</i>	13"	Good	Good	To be preserved; outside zone of construction impact
511	Coast Live Oak/ <i>Quercus agrifolia</i>	14" @ 3.5'	Good	Good	To be preserved; outside zone of construction impact
512	Coast Live Oak/ <i>Quercus agrifolia</i>	11"/8"	Good	Good	To be preserved; outside zone of construction impact
513	Coast Live Oak/ <i>Quercus agrifolia</i>	28"	Excellent	Excellent; beautiful specimen	To be preserved; outside zone of construction impact
514	Valley Oak/ <i>Quercus lobata</i>	7"	Good	Good	To be preserved; outside zone of construction impact
515	Coast Live Oak/ <i>Quercus agrifolia</i>	22"	Excellent	Good	To be preserved; outside zone of construction impact
516	Black Oak/ <i>Quercus kelloggii</i>	13"	Good	Good	To be preserved; outside zone of construction impact
517	Coast Live Oak/ <i>Quercus agrifolia</i>	9"	Good	Good	To be preserved; outside zone of construction impact
518	Valley Oak/ <i>Quercus lobata</i>	8"	Good	Good	To be preserved; outside zone of construction impact

Emerald Isle - Assisted Living

TREE #	SPECIES	TRUNK DIAMETER (In.)	GENERAL HEALTH	STRUCTURAL INTEGRITY	RECOMMENDATIONS
519	Blue Oak/ <i>Quercus douglasii</i>	10"	Excellent	Good	To be preserved; outside zone of construction impact
520	Coast Live Oak/ <i>Quercus agrifolia</i>	8"	Good	Good	To be preserved; outside zone of construction impact
521	Black Oak/ <i>Quercus kelloggii</i>	13"	Good	Good	To be preserved; outside zone of construction impact
522	Coast Live Oak/ <i>Quercus agrifolia</i>	8"	Excellent	Excellent; trunk leans west	To be preserved; outside zone of construction impact
523	Buckeye/ <i>Aesculus californica</i>	6"	Fair	Good	To be removed
524	California Bay/ <i>Umbellularia californica</i>	8"/5"	Poor	Poor	To be removed
525	Coast Live Oak/ <i>Quercus agrifolia</i>	13" @ 3'	Good	Good	To be removed
526	Coast Live Oak/ <i>Quercus agrifolia</i>	12"	Good	Good	To be removed
527	Coast Live Oak/ <i>Quercus agrifolia</i>	10"	Good	Fair	To be removed
529	Coast Live Oak/ <i>Quercus agrifolia</i>	7/14"	Fair	Good	To be preserved
530	California Bay/ <i>Umbellularia californica</i>	4/4/6/6"	Good	Good	To be preserved
531	Coast Live Oak/ <i>Quercus agrifolia</i>	9"	Fair	Fair	To be preserved
532	Coast Live Oak/ <i>Quercus agrifolia</i>	10"	Good	Good	To be preserved
533	Coast Live Oak/ <i>Quercus agrifolia</i>	7/8"	Fair	Good	To be removed
534	California Bay/ <i>Umbellularia californica</i>	5/8"	Good	Poor; decay column	To be removed
535	Coast Live Oak/ <i>Quercus agrifolia</i>	9"	Fair	Fair	To be removed
536	Coast Live Oak/ <i>Quercus agrifolia</i>	8"	Fair	Good	To be preserved
538	Coast Live Oak/ <i>Quercus agrifolia</i>	6"	Fair	Fair	To be preserved; outside zone of construction impact
539	Coast Live Oak/ <i>Quercus agrifolia</i>	9"	Good	Good; trunk leans north/west	To be preserved; outside zone of construction impact
540	Coast Live Oak/ <i>Quercus agrifolia</i>	11"	Fair	Fair	To be preserved; outside zone of construction impact
541	Coast Live Oak/ <i>Quercus agrifolia</i>	13"	Poor	Poor	To be preserved; outside zone of construction impact

Emerald Isle - Assisted Living

TREE #	SPECIES	TRUNK DIAMETER (In.)	GENERAL HEALTH	STRUCTURAL INTEGRITY	RECOMMENDATIONS
542	California Bay/ <i>Umbellularia californica</i>	4"/10"/10"	Fair	Poor	To be preserved
543	Coast Live Oak/ <i>Quercus agrifolia</i>	8"	Fair	Good	To be preserved
543A	Coast Live Oak/ <i>Quercus agrifolia</i>	6/9"	Good	Good	To be preserved
544	Coast Live Oak/ <i>Quercus agrifolia</i>	14"	Good	Good	To be preserved; outside zone of construction impact
545	Buckeye/ <i>Aesculus californica</i>	9"	Poor	Poor	To be preserved; outside zone of construction impact
546	Coast Live Oak/ <i>Quercus agrifolia</i>	11" @ 3.5'	Good	Good	To be preserved; outside zone of construction impact
547	Coast Live Oak/ <i>Quercus agrifolia</i>	9"/6"	Good	Good	To be preserved; outside zone of construction impact
548	Coast Live Oak/ <i>Quercus agrifolia</i>	6"	Fair	Fair	To be preserved; outside zone of construction impact
549	Coast Live Oak/ <i>Quercus agrifolia</i>	10"	Fair	Fair	To be preserved; outside zone of construction impact
550	Coast Live Oak/ <i>Quercus agrifolia</i>	11"/14"	Excellent	Excellent; roots growing among boulders	To be preserved; outside zone of construction impact
551	Coast Live Oak/ <i>Quercus agrifolia</i>	8"	Fair	Fair	To be preserved; outside zone of construction impact
552	Coast Live Oak/ <i>Quercus agrifolia</i>	14"	Fair	Fair	To be preserved; outside zone of construction impact
553	Coast Live Oak/ <i>Quercus agrifolia</i>	6"	Fair	Fair	To be preserved; outside zone of construction impact
554	Buckeye/ <i>Aesculus californica</i>	10"	Fair	Fair	To be preserved; outside zone of construction impact
555	Valley Oak/ <i>Quercus lobata</i>	16/22" @ 3.5'	Excellent	Excellent	To be preserved; outside zone of construction impact
556	Buckeye/ <i>Aesculus californica</i>	5"/6"/8"	Fair	Fair	To be preserved; outside zone of construction impact
557	California Bay/ <i>Umbellularia californica</i>	5"	Excellent	Excellent	To be preserved; outside zone of construction impact
558	Coast Live Oak/ <i>Quercus agrifolia</i>	7"	Good	Good	To be preserved; outside zone of construction impact
559	Coast Live Oak/ <i>Quercus agrifolia</i>	9"	Good	Good	To be preserved; outside zone of construction impact
560	Coast Live Oak/ <i>Quercus agrifolia</i>	6"	Fair	Good	To be preserved; outside zone of construction impact
561	Coast Live Oak/ <i>Quercus agrifolia</i>	9"	Fair	Fair	To be preserved; outside zone of construction impact

Emerald Isle - Assisted Living

TREE #	SPECIES	TRUNK DIAMETER (In.)	GENERAL HEALTH	STRUCTURAL INTEGRITY	RECOMMENDATIONS
562	California Bay/ <i>Umbellularia californica</i>	13"/4"	Fair	Fair	To be preserved; outside zone of construction impact
563	Coast Live Oak/ <i>Quercus agrifolia</i>	9"	Good	Good	To be preserved; outside zone of construction impact
564	Coast Live Oak/ <i>Quercus agrifolia</i>	11"/12"	Good	Good	To be preserved; outside zone of construction impact
565	Valley Oak/ <i>Quercus lobata</i>	18"	Fair	Fair	To be preserved; outside zone of construction impact
566	Coast Live Oak/ <i>Quercus agrifolia</i>	8"/5"	Good	Good	To be preserved; outside zone of construction impact
567	Valley Oak/ <i>Quercus lobata</i>	13"	Poor	Poor	To be preserved; outside zone of construction impact
568	Black Oak/ <i>Quercus kelloggii</i>	8"	Fair	Fair	To be preserved; outside zone of construction impact
569	Coast Live Oak/ <i>Quercus agrifolia</i>	14"	Good	Good	To be preserved; outside zone of construction impact
570	Black Oak/ <i>Quercus kelloggii</i>	21" @ 2.5'	Fair	Fair	To be preserved; outside zone of construction impact
571	Coast Live Oak/ <i>Quercus agrifolia</i>	13"	Good	Good	To be preserved; outside zone of construction impact
572	Coast Live Oak/ <i>Quercus agrifolia</i>	6"	Fair	Fair	To be preserved; outside zone of construction impact
573	Black Oak/ <i>Quercus kelloggii</i>	10"	Good	Good; trunk leans west	To be preserved; outside zone of construction impact
574	Valley Oak/ <i>Quercus lobata</i>	12"	Fair	Fair; trunk leans north	To be preserved; outside zone of construction impact
575	Coast Live Oak/ <i>Quercus agrifolia</i>	10"	Excellent	Good; trunk leans north	To be preserved; outside zone of construction impact
576	Coast Live Oak/ <i>Quercus agrifolia</i>	12"	Good	Fair; trunk leans east	To be preserved; outside zone of construction impact
577	Black Oak/ <i>Quercus kelloggii</i>	12"	Excellent	Good	To be preserved; outside zone of construction impact
578	Coast Live Oak/ <i>Quercus agrifolia</i>	12"	Good	Fair	To be preserved; outside zone of construction impact
579	Valley Oak/ <i>Quercus lobata</i>	15"	Excellent	Excellent	To be preserved; outside zone of construction impact
580	Coast Live Oak/ <i>Quercus agrifolia</i>	9"/9"	Good	Good	To be preserved; outside zone of construction impact
581	Coast Live Oak/ <i>Quercus agrifolia</i>	18"/15"/12"	Excellent	Good; nice specimen	To be preserved; outside zone of construction impact
582	Coast Live Oak/ <i>Quercus agrifolia</i>	14"/10"	Poor	Poor	To be preserved; outside zone of construction impact

Emerald Isle - Assisted Living

TREE #	SPECIES	TRUNK DIAMETER (In.)	GENERAL HEALTH	STRUCTURAL INTEGRITY	RECOMMENDATIONS
583	Coast Live Oak/ <i>Quercus agrifolia</i>	14"	Good	Good	To be preserved; outside zone of construction impact
584	Coast Live Oak/ <i>Quercus agrifolia</i>	12"	Poor	Poor	To be preserved; outside zone of construction impact
585	Coast Live Oak/ <i>Quercus agrifolia</i>	21" @ 3'	Good	Good	To be preserved; outside zone of construction impact
586	Coast Live Oak/ <i>Quercus agrifolia</i>	13"	Fair	Fair	To be preserved; outside zone of construction impact
587	Coast Live Oak/ <i>Quercus agrifolia</i>	12"	Excellent	Good	To be preserved; outside zone of construction impact
588	Valley Oak/ <i>Quercus lobata</i>	11"	Fair	Fair	To be preserved; outside zone of construction impact
589	Coast Live Oak/ <i>Quercus agrifolia</i>	13"	Good	Good; trunk leans south/south-west	To be preserved; outside zone of construction impact
590	Coast Live Oak/ <i>Quercus agrifolia</i>	17"/14" @ 3'	Fair	Fair	To be preserved; outside zone of construction impact
591	Coast Live Oak/ <i>Quercus agrifolia</i>	17"	Good	Good; trunk leans south	To be preserved; outside zone of construction impact
592	Valley Oak/ <i>Quercus lobata</i>	7"	Poor	Poor	To be preserved; outside zone of construction impact
592A	California Bay/ <i>Umbellularia californica</i>	7"/5"	Good	Good	To be preserved; outside zone of construction impact
593	Coast Live Oak/ <i>Quercus agrifolia</i>	10"/9"	Good	Good	To be preserved; outside zone of construction impact
594	Coast Live Oak/ <i>Quercus agrifolia</i>	9"/9"	Good	Good	To be preserved; outside zone of construction impact
595	Coast Live Oak/ <i>Quercus agrifolia</i>	9"/8"	Good	Good	To be preserved; outside zone of construction impact
596	Coast Live Oak/ <i>Quercus agrifolia</i>	9"/8"	Fair	Fair	To be preserved; outside zone of construction impact
597	Coast Live Oak/ <i>Quercus agrifolia</i>	11"/11"	Good	Good	To be preserved; outside zone of construction impact
598	Coast Live Oak/ <i>Quercus agrifolia</i>	7"	Fair	Fair	To be preserved; outside zone of construction impact
599	California Bay/ <i>Umbellularia californica</i>	9"/9"/7"	Good	Fair	To be preserved; outside zone of construction impact
600	Coast Live Oak/ <i>Quercus agrifolia</i>	7"	Fair	Fair	To be preserved; outside zone of construction impact
601	California Bay/ <i>Umbellularia californica</i>	8"/10"	Fair	Fair	To be preserved; outside zone of construction impact
602	Coast Live Oak/ <i>Quercus agrifolia</i>	6"	Fair	Good; trunk leans south	To be preserved; outside zone of construction impact

Emerald Isle - Assisted Living

TREE #	SPECIES	TRUNK DIAMETER (In.)	GENERAL HEALTH	STRUCTURAL INTEGRITY	RECOMMENDATIONS
603	Coast Live Oak/ <i>Quercus agrifolia</i>	14"/8"	Fair	Fair; low branched	To be preserved; outside zone of construction impact
604	California Bay/ <i>Umbellularia californica</i>	4/10"	Fair	Good	To be preserved; outside zone of construction impact
605	Coast Live Oak/ <i>Quercus agrifolia</i>	11"	Good	Good; trunk leans north/east	To be preserved; outside zone of construction impact
606	Coast Live Oak/ <i>Quercus agrifolia</i>	12"	Good	Fair	To be preserved; outside zone of construction impact
607	Coast Live Oak/ <i>Quercus agrifolia</i>	12"	Good	Good	To be preserved
608	Coast Live Oak/ <i>Quercus agrifolia</i>	11"	Fair	Fair	To be removed
609	Coast Live Oak/ <i>Quercus agrifolia</i>	11"	Excellent	Good	To be preserved
609A	Coast Live Oak/ <i>Quercus agrifolia</i>	12"	Good	Good	To be preserved
609B	Coast Live Oak/ <i>Quercus agrifolia</i>	8"	Fair	Fair	To be preserved
609C	California Bay/ <i>Umbellularia californica</i>	6/9"	Good	Poor	To be preserved
609D	Coast Live Oak/ <i>Quercus agrifolia</i>	9"	Fair	Good	To be removed
609E	Valley Oak/ <i>Quercus lobata</i>	11"	Fair/Good	Fair	To be preserved
609F	California Bay/ <i>Umbellularia californica</i>	9"/7"	Good	Good	To be preserved
609G	California Bay/ <i>Umbellularia californica</i>	11"/6"	Fair	Fair	To be preserved
609H	California Bay/ <i>Umbellularia californica</i>	9"	Fair	Fair	To be preserved
609I	California Bay/ <i>Umbellularia californica</i>	7" @ 3"	Excellent	Excellent	To be preserved
610	Coast Live Oak/ <i>Quercus agrifolia</i>	7"	Fair	Fair	To be removed
611	California Bay/ <i>Umbellularia californica</i>	9"	Fair	Fair	To be removed
612	California Bay/ <i>Umbellularia californica</i>	14"	Fair	Fair; decay	To be removed
613	Coast Live Oak/ <i>Quercus agrifolia</i>	13"	Good	Good	To be removed

Emerald Isle - Assisted Living

TREE #	SPECIES	TRUNK DIAMETER (In.)	GENERAL HEALTH	STRUCTURAL INTEGRITY	RECOMMENDATIONS
614	Coast Live Oak/ <i>Quercus agrifolia</i>	11"	Good	Good	To be removed
615	Coast Live Oak/ <i>Quercus agrifolia</i>	14"	Good	Good; trunk leans south/east	To be removed
616	Coast Live Oak/ <i>Quercus agrifolia</i>	5"	Poor	Poor	To be removed
617	California Bay/ <i>Umbellularia californica</i>	9"	Fair	Good	To be removed
618	California Bay/ <i>Umbellularia californica</i>	13"	Fair	Fair	To be removed
619	Coast Live Oak/ <i>Quercus agrifolia</i>	12"	Fair	Good	To be removed
620	Coast Live Oak/ <i>Quercus agrifolia</i>	10"	Good	Fair	To be removed
621	Coast Live Oak/ <i>Quercus agrifolia</i>	9"	Good	Good	To be removed
622	Coast Live Oak/ <i>Quercus agrifolia</i>	9/12"	Good	Good	To be removed
623	California Bay/ <i>Umbellularia californica</i>	12"	Fair	Fair	To be removed
624	Coast Live Oak/ <i>Quercus agrifolia</i>	6"	Fair	Fair; a failed stem	To be removed
625	Coast Live Oak/ <i>Quercus agrifolia</i>	12"	Good	Good	To be removed
626	Coast Live Oak/ <i>Quercus agrifolia</i>	8"	Good	Fair; trunk leans south/east	To be removed
627	Coast Live Oak/ <i>Quercus agrifolia</i>	6"	Fair	Fair; trunk leans east	To be removed
628	Coast Live Oak/ <i>Quercus agrifolia</i>	7"	Fair	Fair; trunk leans east	To be removed
629	Valley Oak/ <i>Quercus lobata</i>	22"	Fair/Good	Good	To be removed
630	Coast Live Oak/ <i>Quercus agrifolia</i>	18"	Good	Good; trunk leans south/east	To be removed
631	Coast Live Oak/ <i>Quercus agrifolia</i>	12"	Good	Good	To be removed
632	Coast Live Oak/ <i>Quercus agrifolia</i>	20"	Excellent	Excellent	To be removed
633	Coast Live Oak/ <i>Quercus agrifolia</i>	14"	Good	Good	To be removed
634	Coast Live Oak/ <i>Quercus agrifolia</i>	9"	Good	Good	To be removed

Emerald Isle - Assisted Living

TREE #	SPECIES	TRUNK DIAMETER (In.)	GENERAL HEALTH	STRUCTURAL INTEGRITY	RECOMMENDATIONS
635	Coast Live Oak/ <i>Quercus agrifolia</i>	15"	Good	Good	To be removed
636	Coast Live Oak/ <i>Quercus agrifolia</i>	16"	Good/Excellent	Excellent; high branching	To be removed
637	Coast Live Oak/ <i>Quercus agrifolia</i>	18"	Good	Excellent	To be removed
638	Coast Live Oak/ <i>Quercus agrifolia</i>	13"	Good	Good	To be removed
639	Black Oak/ <i>Quercus kelloggii</i>	16"	Good	Excellent	To be removed
640	California Bay/ <i>Umbellularia californica</i>	15"	Good	Good	To be removed
642	Coast Live Oak/ <i>Quercus agrifolia</i>	13"	Good	Fair	To be removed
643	California Bay/ <i>Umbellularia californica</i>	17"	Good	Fair; decay	To be removed
644	Coast Live Oak/ <i>Quercus agrifolia</i>	21"	Good	Good	To be removed
645	Coast Live Oak/ <i>Quercus agrifolia</i>	11"	Good	Good; trunk leans east to south/east	To be removed
646	Coast Live Oak/ <i>Quercus agrifolia</i>	13"	Good	Poor	To be removed
647	Black Oak/ <i>Quercus kelloggii</i>	16"	Good	Fair	To be removed
648	California Bay/ <i>Umbellularia californica</i>	11"	Poor	Poor	To be removed
649	Coast Live Oak/ <i>Quercus agrifolia</i>	12"	Fair	Fair	To be removed
650	Coast Live Oak/ <i>Quercus agrifolia</i>	13"	Good	Good	To be removed
651	Coast Live Oak/ <i>Quercus agrifolia</i>	14"	Good	Good	To be removed
652	Coast Live Oak/ <i>Quercus agrifolia</i>	14"	Fair	Poor; upper crown deteriorating, hazard	To be removed
653	Coast Live Oak/ <i>Quercus agrifolia</i>	13"	Fair	Fair	To be removed
653A	California Bay/ <i>Umbellularia californica</i>	6/6"	Good	Fair/Good; codominant leaders	To be removed
654	Coast Live Oak/ <i>Quercus agrifolia</i>	13" @ 3.5'	Good	Fair	To be removed
656	Coast Live Oak/ <i>Quercus agrifolia</i>	10"	Fair	Fair; trunk leans east	To be removed

Emerald Isle - Assisted Living

TREE #	SPECIES	TRUNK DIAMETER (In.)	GENERAL HEALTH	STRUCTURAL INTEGRITY	RECOMMENDATIONS
657	Coast Live Oak/ <i>Quercus agrifolia</i>	9"	Fair	Fair; trunk leans east	To be removed
658	Coast Live Oak/ <i>Quercus agrifolia</i>	12"	Fair	Fair	To be removed
659	Coast Live Oak/ <i>Quercus agrifolia</i>	6"	Fair	Fair	To be removed
660	California Bay/ <i>Umbellularia californica</i>	5"/6"	Fair	Good	To be removed
661	California Bay/ <i>Umbellularia californica</i>	4/5/5/5/6"	Excellent	Good	To be removed
662	Coast Live Oak/ <i>Quercus agrifolia</i>	18"	Fair	Poor	To be removed
663	Coast Live Oak/ <i>Quercus agrifolia</i>	16"	Good	Good	To be removed
664	Coast Live Oak/ <i>Quercus agrifolia</i>	6"	Fair	Fair	To be removed
665	Coast Live Oak/ <i>Quercus agrifolia</i>	16"	Excellent	Good	To be removed
666	Coast Live Oak/ <i>Quercus agrifolia</i>	16"	Good	Fair	To be preserved
667	Coast Live Oak/ <i>Quercus agrifolia</i>	17"	Good	Good	To be preserved
668	California Bay/ <i>Umbellularia californica</i>	5"	Excellent	Good	To be removed
671	California Bay/ <i>Umbellularia californica</i>	15"	Good	Fair	To be preserved
672	California Bay/ <i>Umbellularia californica</i>	5/6"	Good	Good	To be removed
673	Coast Live Oak/ <i>Quercus agrifolia</i>	13"	Good	Good	To be preserved
674	California Bay/ <i>Umbellularia californica</i>	5"/5"	Poor	Fair	To be removed
675	California Bay/ <i>Umbellularia californica</i>	11/17/9/10/4/5/6/5/5/6/12"	Excellent	Good	To be preserved
676	Coast Live Oak/ <i>Quercus agrifolia</i>	19"/22"	Fair/Good	Poor	To be removed
678	Coast Live Oak/ <i>Quercus agrifolia</i>	10"	Fair	Poor	To be removed
679	Coast Live Oak/ <i>Quercus agrifolia</i>	16"	Good	Good	To be removed
680	California Bay/ <i>Umbellularia californica</i>	4/4/5/8"	Good	Good	To be removed

Emerald Isle - Assisted Living

TREE #	SPECIES	TRUNK DIAMETER (In.)	GENERAL HEALTH	STRUCTURAL INTEGRITY	RECOMMENDATIONS
681	Buckeye/ <i>Aesculus californica</i>	5"	Fair	Fair	To be removed
682	Coast Live Oak/ <i>Quercus agrifolia</i>	11"	Fair	Fair	To be removed
683	Black Oak/ <i>Quercus kelloggii</i>	11"	Good	Good	To be removed
684	Coast Live Oak/ <i>Quercus agrifolia</i>	12"	Good	Fair	To be removed
685	California Bay/ <i>Umbellularia californica</i>	6"	Fair	Good; may need pruning for clearance	To be removed
686	Coast Live Oak/ <i>Quercus agrifolia</i>	7"	Good	Good	To be removed
687	Coast Live Oak/ <i>Quercus agrifolia</i>	13"	Good	Good; trunk leans south	To be removed
688	Coast Live Oak/ <i>Quercus agrifolia</i>	17"	Poor	Poor	To be preserved
689	Coast Live Oak/ <i>Quercus agrifolia</i>	15"/13"	Good	Fair	To be removed
689A	Buckeye/ <i>Aesculus californica</i>	5"	Good	Good	To be removed
690	Coast Live Oak/ <i>Quercus agrifolia</i>	10"	Poor	Poor	To be preserved
691	Coast Live Oak/ <i>Quercus agrifolia</i>	11"	Fair	Fair	To be preserved
691A	Coast Live Oak/ <i>Quercus agrifolia</i>	21" @ 3'	Excellent	Excellent	To be preserved; outside zone of construction impact
692	Coast Live Oak/ <i>Quercus agrifolia</i>	14"	Good	Good	To be preserved
693	Coast Live Oak/ <i>Quercus agrifolia</i>	7"/7"	Good	Good; trunk leans south	To be preserved; outside zone of construction impact
694	California Bay/ <i>Umbellularia californica</i>	6/6/5/4/4/4/5/5/4/4/4"	Good	Good; main trunk dead, suckers developing. Low clearance	To be preserved; outside zone of construction impact
695	Coast Live Oak/ <i>Quercus agrifolia</i>	10"	Good	Good	To be preserved; outside zone of construction impact
696	Coast Live Oak/ <i>Quercus agrifolia</i>	13"	Good	Good	To be preserved; outside zone of construction impact
697	California Bay/ <i>Umbellularia californica</i>	10"	Good	Good	To be preserved; outside zone of construction impact
698	Coast Live Oak/ <i>Quercus agrifolia</i>	13"/14" @ 3'	Good	Good; may need pruning for clearance	To be preserved; outside zone of construction impact
699	Coast Live Oak/ <i>Quercus agrifolia</i>	11"	Good	Good; trunk leans east- south/east	To be preserved; outside zone of construction impact

Emerald Isle - Assisted Living

TREE #	SPECIES	TRUNK DIAMETER (In.)	GENERAL HEALTH	STRUCTURAL INTEGRITY	RECOMMENDATIONS
700	Coast Live Oak/ <i>Quercus agrifolia</i>	9"	Good	Good	To be preserved
701	Coast Live Oak/ <i>Quercus agrifolia</i>	17"	Good	Good	To be preserved; outside zone of construction impact
702	Buckeye/ <i>Aesculus californica</i>	5"/5"	Excellent	Excellent	To be preserved; outside zone of construction impact
703	Coast Live Oak/ <i>Quercus agrifolia</i>	7"	Good	Good	To be preserved; outside zone of construction impact
704	Coast Live Oak/ <i>Quercus agrifolia</i>	8"	Good	Good	To be preserved; outside zone of construction impact
705	Buckeye/ <i>Aesculus californica</i>	5" @ 3.5'	Fair	Fair	To be preserved; outside zone of construction impact
706	Coast Live Oak/ <i>Quercus agrifolia</i>	9"	Good	Good	To be preserved; outside zone of construction impact
707	California Bay/ <i>Umbellularia californica</i>	10"	Good	Good	To be preserved; outside zone of construction impact
708	Valley Oak/ <i>Quercus lobata</i>	27"	Excellent	Excellent	To be preserved; outside zone of construction impact
709	Coast Live Oak/ <i>Quercus agrifolia</i>	22"	Excellent	Excellent	To be preserved; outside zone of construction impact
710	California Bay/ <i>Umbellularia californica</i>	9"	Good	Good	To be preserved; outside zone of construction impact
711	Coast Live Oak/ <i>Quercus agrifolia</i>	13"	Excellent	Good	To be preserved; outside zone of construction impact
712	Blue Oak/ <i>Quercus douglasii</i>	6"	Good	Good	To be preserved; outside zone of construction impact
713	California Bay/ <i>Umbellularia californica</i>	7"/7"/5"	Excellent	Excellent; may need pruning for clearance	To be preserved; outside zone of construction impact
714	Coast Live Oak/ <i>Quercus agrifolia</i>	13"	Good	Good; nice specimen	To be preserved; outside zone of construction impact
715	Coast Live Oak/ <i>Quercus agrifolia</i>	10"	Good	Good	To be preserved; outside zone of construction impact
716	Coast Live Oak/ <i>Quercus agrifolia</i>	5"/10"	Good	Good	To be preserved; outside zone of construction impact
717	Coast Live Oak/ <i>Quercus agrifolia</i>	12"/11"	Excellent	Good	To be preserved; outside zone of construction impact
718	Coast Live Oak/ <i>Quercus agrifolia</i>	11"/10"	Good	Good; may need pruning for clearance	To be preserved; outside zone of construction impact
719	California Bay/ <i>Umbellularia californica</i>	8"/5"	Fair	Fair; may need pruning for clearance	To be preserved; outside zone of construction impact
720	California Bay/ <i>Umbellularia californica</i>	8"/9"	Good	Good; may need pruning for clearance	To be preserved; outside zone of construction impact

Emerald Isle - Assisted Living

TREE #	SPECIES	TRUNK DIAMETER (In.)	GENERAL HEALTH	STRUCTURAL INTEGRITY	RECOMMENDATIONS
721	Coast Live Oak/ <i>Quercus agrifolia</i>	10"/10"	Excellent	Excellent	To be preserved; outside zone of construction impact
722	Coast Live Oak/ <i>Quercus agrifolia</i>	13"	Good	Good	To be preserved; outside zone of construction impact
723	Coast Live Oak/ <i>Quercus agrifolia</i>	8"	Fair	Fair	To be preserved; outside zone of construction impact
724	Coast Live Oak/ <i>Quercus agrifolia</i>	9" @ 3.5'	Fair	Fair	To be preserved; outside zone of construction impact
725	Coast Live Oak/ <i>Quercus agrifolia</i>	10"	Good	Good	To be preserved; outside zone of construction impact
726	Buckeye/ <i>Aesculus californica</i>	8"/6"	Fair	Fair	To be preserved; outside zone of construction impact
727	Coast Live Oak/ <i>Quercus agrifolia</i>	14"	Good	Good; may need pruning for clearance	To be preserved; outside zone of construction impact
728	Coast Live Oak/ <i>Quercus agrifolia</i>	10"	Good	Fair	To be preserved; outside zone of construction impact
729	California Bay/ <i>Umbellularia californica</i>	12"	Good	Fair; may need pruning for clearance	To be preserved; outside zone of construction impact
731	Coast Live Oak/ <i>Quercus agrifolia</i>	16" @ 3'	Good	Fair	To be preserved; outside zone of construction impact
732	Coast Live Oak/ <i>Quercus agrifolia</i>	11"/7"	Good	Good	To be preserved; outside zone of construction impact
733	Coast Live Oak/ <i>Quercus agrifolia</i>	16" @ 3.5'	Good	Good	To be preserved; outside zone of construction impact
734	California Bay/ <i>Umbellularia californica</i>	10"/9"/8"	Good	Fair	To be preserved; outside zone of construction impact
735	California Bay/ <i>Umbellularia californica</i>	8"/5"/5"	Excellent	Good	To be preserved; outside zone of construction impact
736	Coast Live Oak/ <i>Quercus agrifolia</i>	6"	Good	Good	To be preserved; outside zone of construction impact
737	California Bay/ <i>Umbellularia californica</i>	8"	Fair	Fair	To be preserved; outside zone of construction impact
738	California Bay/ <i>Umbellularia californica</i>	4/5/6/5/4"	Good	Good; may need pruning for clearance	To be preserved; outside zone of construction impact
739	Black Oak/ <i>Quercus kelloggii</i>	8"	Good	Good	To be preserved; outside zone of construction impact
740	Black Oak/ <i>Quercus kelloggii</i>	9"	Good	Good; trunk leans south/east	To be preserved; outside zone of construction impact
741	Coast Live Oak/ <i>Quercus agrifolia</i>	12/13/15/16"	Good	Good	To be removed
742	Coast Live Oak/ <i>Quercus agrifolia</i>	22"	Excellent	Excellent	construction; clearance pruning will be needed

Emerald Isle - Assisted Living

TREE #	SPECIES	TRUNK DIAMETER (In.)	GENERAL HEALTH	STRUCTURAL INTEGRITY	RECOMMENDATIONS
743	Coast Live Oak/ <i>Quercus agrifolia</i>	20" @ 3'	Excellent	Excellent	construction; ; will need pruning for clearance
744	Coast Live Oak/ <i>Quercus agrifolia</i>	12"	Good	Excellent	To be preserved
745	Valley Oak/ <i>Quercus lobata</i>	22"	Good	Excellent	To be preserved
746	Black Oak/ <i>Quercus kelloggii</i>	11"/11"/6"	Excellent	Good/Excellent	To be preserved
747	Black Oak/ <i>Quercus kelloggii</i>	12"	Excellent	Good/Excellent	To be preserved
748	Black Oak/ <i>Quercus kelloggii</i>	16"	Excellent	Excellent	To be preserved
749	Coast Live Oak/ <i>Quercus agrifolia</i>	4/7/8"	Good	Good	To be preserved
750	Coast Live Oak/ <i>Quercus agrifolia</i>	15"	Good	Good	To be removed
751	Coast Live Oak/ <i>Quercus agrifolia</i>	17"	Excellent	Excellent	To be removed
752	Coast Live Oak/ <i>Quercus agrifolia</i>	17"	Excellent	Good	To be removed
753	Coast Live Oak/ <i>Quercus agrifolia</i>	9,5	Good	Good	To be preserved
754	Coast Live Oak/ <i>Quercus agrifolia</i>	10"/7"	Good	Good	To be preserved
755	Coast Live Oak/ <i>Quercus agrifolia</i>	13"	Good	Good	To be preserved; moderate impact from construction
756	California Bay/ <i>Umbellularia californica</i>	11/7/6/10/9/10 /6/4/7/13"	Excellent	Good	To be preserved; outside zone of construction impact
757	Coast Live Oak/ <i>Quercus agrifolia</i>	14"	Good	Good	To be preserved
758	Coast Live Oak/ <i>Quercus agrifolia</i>	18"	Good	Poor; decay column	To be preserved
759	Coast Live Oak/ <i>Quercus agrifolia</i>	8"	Fair	Fair	To be preserved; outside zone of construction impact
760	Coast Live Oak/ <i>Quercus agrifolia</i>	8"	Good	Good	To be preserved; outside zone of construction impact
761	Coast Live Oak/ <i>Quercus agrifolia</i>	12"/8"	Good	Good	To be preserved; outside zone of construction impact
762	Coast Live Oak/ <i>Quercus agrifolia</i>	11"	Good	Good	To be preserved; outside zone of construction impact
763	Coast Live Oak/ <i>Quercus agrifolia</i>	12"	Fair	Fair	To be preserved; outside zone of construction impact

Emerald Isle - Assisted Living

TREE #	SPECIES	TRUNK DIAMETER (In.)	GENERAL HEALTH	STRUCTURAL INTEGRITY	RECOMMENDATIONS
764	Coast Live Oak/ <i>Quercus agrifolia</i>	14"/10"	Good	Good	To be preserved; outside zone of construction impact
765	Coast Live Oak/ <i>Quercus agrifolia</i>	6"	Poor	Poor	To be preserved; outside zone of construction impact
766	Coast Live Oak/ <i>Quercus agrifolia</i>	17"	Good	Good	To be preserved; outside zone of construction impact
767	Black Oak/ <i>Quercus kelloggii</i>	10"	Good	Fair/Good	To be preserved; moderate impact from construction
768	Coast Live Oak/ <i>Quercus agrifolia</i>	11"/7"/6"	Fair	Fair	To be preserved; outside zone of construction impact
769	Coast Live Oak/ <i>Quercus agrifolia</i>	11/13"	Fair/Good	Fair	To be preserved; will need clearance pruning
770	Coast Live Oak/ <i>Quercus agrifolia</i>	9"	Good	Good	To be preserved; outside zone of construction impact
771	Coast Live Oak/ <i>Quercus agrifolia</i>	12"	Excellent	Good	To be preserved; outside zone of construction impact
772	Black Oak/ <i>Quercus kelloggi</i>	12"@ 4"	Good	Good	To be preserved; outside zone of construction impact
773	Coast Live Oak/ <i>Quercus agrifolia</i>	11"	Good	Good	To be preserved; outside zone of construction impact
774	Coast Live Oak/ <i>Quercus agrifolia</i>	23" @ 2.5	Good	Good	To be preserved; outside zone of construction impact
775	California Bay/ <i>Umbellularia californica</i>	12"	Good	Good	To be preserved; outside zone of construction impact
776	Coast Live Oak/ <i>Quercus agrifolia</i>	6"	Poor	Poor	To be preserved; outside zone of construction impact
777	Black Oak/ <i>Quercus kelloggii</i>	13"	Good	Good	To be preserved; outside zone of construction impact
778	Coast Live Oak/ <i>Quercus agrifolia</i>	9"	Fair	Fair	To be preserved; outside zone of construction impact
779	California Bay/ <i>Umbellularia californica</i>	8/8/5/15"	Excellent	Excellent	To be preserved; outside zone of construction impact
780	California Bay/ <i>Umbellularia californica</i>	12"/7"/7"	Excellent	Excellent	To be preserved; outside zone of construction impact
781	Coast Live Oak/ <i>Quercus agrifolia</i>	8"/10"	Fair	Fair	To be preserved; outside zone of construction impact
782	Coast Live Oak/ <i>Quercus agrifolia</i>	17"	Excellent	Excellent	To be preserved; outside zone of construction impact
783	Coast Live Oak/ <i>Quercus agrifolia</i>	13"	Good	Good	To be preserved; outside zone of construction impact
784	Coast Live Oak/ <i>Quercus agrifolia</i>	11"	Good	Good	To be preserved; outside zone of construction impact

Emerald Isle - Assisted Living

TREE #	SPECIES	TRUNK DIAMETER (In.)	GENERAL HEALTH	STRUCTURAL INTEGRITY	RECOMMENDATIONS
785	Coast Live Oak/ <i>Quercus agrifolia</i>	14"	Excellent	Good; trunk leans south-south/west	To be preserved; outside zone of construction impact
786	Coast Live Oak/ <i>Quercus agrifolia</i>	13"/16"	Good	Fair	To be preserved; outside zone of construction impact
787	Coast Live Oak/ <i>Quercus agrifolia</i>	11"	Good	Good	To be preserved; outside zone of construction impact
788	Coast Live Oak/ <i>Quercus agrifolia</i>	8"	Poor	Fair	To be preserved; outside zone of construction impact
789	Coast Live Oak/ <i>Quercus agrifolia</i>	16"	Good	Good	To be preserved; outside zone of construction impact
790	Madrone/ <i>Arbutus menziesii</i>	22"/26"	Good	Good	To be preserved; outside zone of construction impact
792	Valley Oak/ <i>Quercus lobata</i>	110"	Excellent	Excellent	To be preserved; outside zone of construction impact
793	Valley Oak/ <i>Quercus lobata</i>	16"	Good	Good	To be preserved; outside zone of construction impact
794	Coast Live Oak/ <i>Quercus agrifolia</i>	13"	Excellent	Good	To be preserved; outside zone of construction impact
795	Coast Live Oak/ <i>Quercus agrifolia</i>	5"/7"	Fair	Fair	To be preserved
796	Coast Live Oak/ <i>Quercus agrifolia</i>	27"	Excellent	Excellent; beautiful specimen	To be preserved; will need clearance pruning
797	Coast Live Oak/ <i>Quercus agrifolia</i>	12"	Good	Good	To be removed
798	Black Oak/ <i>Quercus kelloggi</i>	16"	Good	Excellent	To be removed
799	Coast Live Oak/ <i>Quercus agrifolia</i>	13"/13"	Fair	Fair	To be removed
800	Coast Live Oak/ <i>Quercus agrifolia</i>	5/10/14/17"	Good	Fair/Good	To be removed
801	Coast Live Oak/ <i>Quercus agrifolia</i>	17"	Excellent	Good	To be removed
802	Coast Live Oak/ <i>Quercus agrifolia</i>	19"/15"/16"	Excellent	Good; beautiful specimen	To be preserved; will need clearance pruning
815	Coast Live Oak/ <i>Quercus agrifolia</i>	13"	Fair	Fair	To be preserved; outside zone of construction impact
816	California Bay/ <i>Umbellularia californica</i>	10"	Fair/Poor	Poor	To be preserved; outside zone of construction impact
817	Coast Live Oak/ <i>Quercus agrifolia</i>	13"/15"	Good	Good	To be preserved; outside zone of construction impact
818	Coast Live Oak/ <i>Quercus agrifolia</i>	21"	Good	Fair	To be preserved; outside zone of construction impact

Emerald Isle - Assisted Living

TREE #	SPECIES	TRUNK DIAMETER (In.)	GENERAL HEALTH	STRUCTURAL INTEGRITY	RECOMMENDATIONS
819	Coast Live Oak/ <i>Quercus agrifolia</i>	13"	Fair	Fair	To be preserved; outside zone of construction impact
820	Coast Live Oak/ <i>Quercus agrifolia</i>	9"	Poor	Poor	To be preserved; outside zone of construction impact
821	Coast Live Oak/ <i>Quercus agrifolia</i>	11"	Good	Good	To be preserved; outside zone of construction impact
822	Coast Live Oak/ <i>Quercus agrifolia</i>	11"	Good	Good	To be preserved; outside zone of construction impact
823	California Bay/ <i>Umbellularia californica</i>	16"	Excellent	Good	To be preserved; outside zone of construction impact
824	Coast Live Oak/ <i>Quercus agrifolia</i>	15"	Excellent	Good	To be preserved; outside zone of construction impact
825	Coast Live Oak/ <i>Quercus agrifolia</i>	7"/12/5"	Good	Good	To be preserved; outside zone of construction impact
826	Coast Live Oak/ <i>Quercus agrifolia</i>	10"	Good	Fair	To be preserved; outside zone of construction impact
827	Coast Live Oak/ <i>Quercus agrifolia</i>	8"/9"	Fair	Fair	To be preserved; outside zone of construction impact
828	California Bay/ <i>Umbellularia californica</i>	9"/9"	Good	Fair	To be preserved; outside zone of construction impact
900	Coast Live Oak/ <i>Quercus agrifolia</i>	10"	Fair	Fair; one dead trunk	To be preserved; remove dead trunk and minimal clearance pruning
901	California Bay/ <i>Umbellularia californica</i>	5/9" @ 2'	Good	Fair	To be removed
902	California Bay/ <i>Umbellularia californica</i>	4/4/7"	Good	Good	To be removed
903	Coast Live Oak/ <i>Quercus agrifolia</i>	10"	Excellent	Good	To be removed
904	Coast Live Oak/ <i>Quercus agrifolia</i>	6"	Fair	Good	To be removed
905	Coast Live Oak/ <i>Quercus agrifolia</i>	15"	Good	Excellent	To be preserved
906	California Bay/ <i>Umbellularia californica</i>	6" (+ small stems)	Good	Fair; multiple trunks	To be removed
907	Coast Live Oak/ <i>Quercus agrifolia</i>	6"	Fair	Good	To be removed
908	California Bay/ <i>Umbellularia californica</i>	4/4" (+ small stems)	Good	Good	To be removed
909	California Bay/ <i>Umbellularia californica</i>	6"	Good	Good	To be removed
910	California Bay/ <i>Umbellularia californica</i>	4"	Excellent	Excellent	To be removed

Emerald Isle - Assisted Living

TREE #	SPECIES	TRUNK DIAMETER (In.)	GENERAL HEALTH	STRUCTURAL INTEGRITY	RECOMMENDATIONS
911	California Bay/ <i>Umbellularia californica</i>	5" (+ small stems)	Good	Fair; multiple trunks	To be removed
912	California Bay/ <i>Umbellularia californica</i>	4/5/5"	Fair	Fair; multiple trunks	To be removed
913	California Bay/ <i>Umbellularia californica</i>	5"	Good	Fair	To be preserved
914	California Bay/ <i>Umbellularia californica</i>	4/4"	Good	Good	To be removed
915	California Bay/ <i>Umbellularia californica</i>	4/4/5/6"	Good	Fair	To be preserved
916	California Bay/ <i>Umbellularia californica</i>	4" (+ small stems)	Good	Fair; multiple trunks	To be removed
917	California Bay/ <i>Umbellularia californica</i>	4/5" (+ small stems)	Good	Fair; multiple trunks	To be removed
918	California Bay/ <i>Umbellularia californica</i>	4/5" (+ small stems)	Good	Fair/Good; multiple trunks	To be removed
919	California Bay/ <i>Umbellularia californica</i>	5"	Excellent	Excellent	To be removed
920	California Bay/ <i>Umbellularia californica</i>	5	Fair	Good	To be removed
921	California Bay/ <i>Umbellularia californica</i>	4/5/5"	Excellent	Excellent	To be removed
922	California Bay/ <i>Umbellularia californica</i>	5/6"	Good	Good	To be removed
923	California Bay/ <i>Umbellularia californica</i>	4/4/6/6"	Good	Good	To be preserved
924	California Bay/ <i>Umbellularia californica</i>	5"	Good	Good	To be removed
925	California Bay/ <i>Umbellularia californica</i>	5"	Good	Excellent	To be preserved
926	Coast Live Oak/ <i>Quercus agrifolia</i>	14"	Fair	Fair; significant decay	To be preserved
927	California Bay/ <i>Umbellularia californica</i>	5"	Good	Good; multiple trunks	To be preserved; will need clearance pruning
928	California Bay/ <i>Umbellularia californica</i>	6"	Excellent	Good; damaged	To be removed
929	Coast Live Oak/ <i>Quercus agrifolia</i>	9"	Good	Good; damaged, some decay	To be preserved
930	California Bay/ <i>Umbellularia californica</i>	5/5/5"	Good	Fair	To be preserved
931	California Bay/ <i>Umbellularia californica</i>	4/6/6"	Good	Good	To be removed

Emerald Isle - Assisted Living

TREE #	SPECIES	TRUNK DIAMETER (In.)	GENERAL HEALTH	STRUCTURAL INTEGRITY	RECOMMENDATIONS
932	California Bay/ <i>Umbellularia californica</i>	4" (+ small stems)	Poor	Good	To be removed
933	Coast Live Oak/ <i>Quercus agrifolia</i>	6"	Excellent	Good	To be preserved; minimize fill
934	California Bay/ <i>Umbellularia californica</i>	4"	Good	Excellent	To be preserved; minimize fill
935	Olive/ <i>Olea europaea</i>	4"	Excellent	Good	To be preserved; will need clearance pruning
936	California Bay/ <i>Umbellularia californica</i>	4"	Good	Good	To be removed
937	California Bay/ <i>Umbellularia californica</i>	4/5"	Good	Good	To be removed
938	California Bay/ <i>Umbellularia californica</i>	4"	Good	Good	To be preserved
939	Buckeye/ <i>Aesculus californica</i>	6"	Good	Poor	To be removed
940	California Bay/ <i>Umbellularia californica</i>	5"	Good	Poor	To be removed
941	Buckeye/ <i>Aesculus californica</i>	4/5"	Fair	Good	To be removed
942	Buckeye/ <i>Aesculus californica</i>	5/5" @ 3'	Good	Good	To be removed
943	California Bay/ <i>Umbellularia californica</i>	5/5"	Fair	Good	To be removed
944	California Bay/ <i>Umbellularia californica</i>	4" (+ small stems)	Good	Fair/Good; multiple trunks	To be preserved
945	Coast Live Oak/ <i>Quercus agrifolia</i>	5" @ 3'	Fair	Good	To be removed
946	Buckeye/ <i>Aesculus californica</i>	5" @ 3'	Good	Excellent	To be removed
947	California Bay/ <i>Umbellularia californica</i>	4" (+ small stems)	Good	Good	To be removed
948	California Bay/ <i>Umbellularia californica</i>	4" (+ small stems)	Excellent	Fair/Good; multiple trunks	To be removed
949	Buckeye/ <i>Aesculus californica</i>	7"	Good	Poor	To be removed
950	California Bay/ <i>Umbellularia californica</i>	4" (+ small stems)	Good	Good; multiple trunks	To be removed
951	Coast Live Oak/ <i>Quercus agrifolia</i>	8"	Good	Good	To be removed
952	Coast Live Oak/ <i>Quercus agrifolia</i>	5"	Fair	Good	To be removed

Emerald Isle - Assisted Living

TREE #	SPECIES	TRUNK DIAMETER (In.)	GENERAL HEALTH	STRUCTURAL INTEGRITY	RECOMMENDATIONS
953	Coast Live Oak/ <i>Quercus agrifolia</i>	4"	Good	Fair; multiple trunks	To be removed
954	California Bay/ <i>Umbellularia californica</i>	4"	Excellent	Excellent	To be removed
955	California Bay/ <i>Umbellularia californica</i>	4"	Fair	Good; multiple trunks	To be removed
956	California Bay/ <i>Umbellularia californica</i>	5"	Fair	Fair	To be removed
957	California Bay/ <i>Umbellularia californica</i>	4" (+ small stems)	Good	Fair	To be removed
958	California Bay/ <i>Umbellularia californica</i>	5"	Fair	Good	To be removed
959	California Bay/ <i>Umbellularia californica</i>	5" (+ small stems)	Fair	Fair/Good; multiple trunks	To be removed
960	California Bay/ <i>Umbellularia californica</i>	5" (+ small stems)	Fair	Fair/Good; multiple trunks	To be removed
961	California Bay/ <i>Umbellularia californica</i>	5" (+ small stems)	Excellent	Fair/Good; multiple trunks	To be removed
962	Coast Live Oak/ <i>Quercus agrifolia</i>	8"	Good	Excellent	To be removed
963	California Bay/ <i>Umbellularia californica</i>	5/6"	Excellent	Good/Excellent	To be removed
964	California Bay/ <i>Umbellularia californica</i>	5" (+ small stems)	Good	Fair/Good; multiple trunks	To be removed
965	California Bay/ <i>Umbellularia californica</i>	4" (+ small stems)	Good	Fair/Good; multiple trunks	To be removed
966	California Bay/ <i>Umbellularia californica</i>	4" (+ small stems)	Good	Fair/Good; multiple trunks	To be removed
967	Coast Live Oak/ <i>Quercus agrifolia</i>	4/4/7/9/10"	Good	Good; damaged	To be removed
968	California Bay/ <i>Umbellularia californica</i>	4"	Good	Good	To be removed
969	California Bay/ <i>Umbellularia californica</i>	6"	Fair	Good	To be removed
970	California Bay/ <i>Umbellularia californica</i>	5"	Good	Good	To be removed
971	California Bay/ <i>Umbellularia californica</i>	4/4" (+ small stems)	Good	Good	To be removed
972	California Bay/ <i>Umbellularia californica</i>	4/5" (+ small stems)	Good	Fair; multiple trunks	To be removed
973	California Bay/ <i>Umbellularia californica</i>	5/5/6"	Fair	Fair; damaged	To be removed

Emerald Isle - Assisted Living

TREE #	SPECIES	TRUNK DIAMETER (In.)	GENERAL HEALTH	STRUCTURAL INTEGRITY	RECOMMENDATIONS
974	Coast Live Oak/ <i>Quercus agrifolia</i>	5"	Good	Good	To be removed
975	Coast Live Oak/ <i>Quercus agrifolia</i>	6/9"	Fair	Good	To be removed
976	California Bay/ <i>Umbellularia californica</i>	5"	Excellent	Good	To be removed
977	California Bay/ <i>Umbellularia californica</i>	4"	Good	Fair	To be removed
978	California Bay/ <i>Umbellularia californica</i>	6"	Excellent	Excellent	To be removed
979	California Bay/ <i>Umbellularia californica</i>	4"	Good	Good	To be removed
980	California Bay/ <i>Umbellularia californica</i>	4/4" (+ small stems)	Excellent	Good; multiple trunks	To be removed
981	California Bay/ <i>Umbellularia californica</i>	4" (+ small stems)	Good	Good; multiple trunks	To be removed
982	Coast Live Oak/ <i>Quercus agrifolia</i>	6"	Good	Good	To be removed
984	Buckeye/ <i>Aesculus californica</i>	4	Fair	Fair; damaged	To be removed
985	California Bay/ <i>Umbellularia californica</i>	4"	Good	Good	To be preserved
986	California Bay/ <i>Umbellularia californica</i>	4/4/5/5"	Excellent	Good; multiple trunks	To be preserved
987	California Bay/ <i>Umbellularia californica</i>	4" (+ small stems)	Good	Good; multiple trunks	To be preserved

EMERALD ISLE ASSISTED LIVING – Santa Rosa CA

ARBORIST'S REPORT SUMMARY

April 11, 2017

The following arborist's report provides an inventory and evaluations of all trees over 4" diameter (at 54" above grade, unless noted otherwise) which might be impacted by proposed construction on the site of the Emerald Isle Assisted Living project in Santa Rosa, California. Tree locations are based on the Tree Protection Plan, dated April 11, 2017, incorporating the most current revisions to the site plan prepared by Brelje & Race, project engineers.

The site is hilly with mostly native trees. They have been relatively undisturbed, and vary widely in their condition. They were initially inventoried in 1999, and have been re-evaluated in 2007, 2013 and December 2016 to assess their current condition and viability. Trees which have now reached the 4" threshold for protection within the construction zone have been added; numbered and tagged on site and included in the latest inventory. There are estimated to be many more young trees now 4" and larger in the portion of the site which will remain undisturbed which we have not surveyed or included in this inventory and totals. I have worked with the civil engineers and landscape architects to assess the best tree candidates for preservation, and we will continue to refine details to protect the trees to be preserved.

All protected trees over 4" d.b.h. (diameter at breast height, 4.5') on the site are included; any that are within the zone of potential construction impact have been re-evaluated. They are tagged onsite, their ID numbers relating to the attached inventory and evaluation, and as shown on the Tree Preservation Plan. Trees which fell or died in the intervening years since the last tree survey have been removed from the inventory for clarity.

The format of the Arborist's Report – Emerald Isle is as follows:

Tree Inventory & Evaluation - A listing and discussion of the existing trees on site, including the following information:

Number - The number assigned to a tree for location reference on the Inventory & Site Plan

Species (Common & Botanical Name)

Trunk Diameter - Trunk diameter in inches at 54" above grade (d.b.h.), (unless noted otherwise)

General Condition - Rated Poor to Excellent. General comments about the tree's present condition. 'Poor' or 'Fair' may indicate severe loss of vigor, significant decay, possible disease, sparse foliage, branch dieback, suppressed growth due to competition, etc.

Structural Integrity - Rated Poor to Excellent, with specific comments regarding canopy development or angle of lean, significant defects or problems, etc.

Recommendations – Specific comments regarding tree potential for preservation, removal (if necessary for hazard reduction), and individual protection measures. Tree status is listed – whether to be preserved or removed.

Tree Protection Notes – A list of tree protection measures appropriate for this site and project will be included on the Tree Preservation Plan.

Respectfully submitted,

Becky Duckles

Becky Duckles, Project Arborist, ISA Certified Consulting Arborist #WE-0796A

OSL COMMUNITIES, LLC

City of Santa Rosa, CA

Emerald Isle

TREE REPLACEMENT MITIGATION CALCULATION

APN 173-670-016

Per Chapter 17-24 existing trees over 4" in girth to be removed shall be replaced by (2) 15 gal. min. size trees for each 6 inches, or fraction thereof, of the diameter of the tree to be removed. Per 17-24-0.050(c) the same genus and species as the removed tree (or another species, if approved by the Director) shall be used.

For all of the multi trunk trees, total diameter is calculated by adding the multiple trunk areas together.
(Per the Council of Tree & Landscape Appraisers Guide)

EXISTING TREES TO BE REMOVED ARE AS FOLLOWS:

TREE	SPECIES	TRUNK DIAMETER (In.)
38	Valley Oak/ <i>Quercus lobata</i>	23"
238	Coast Live Oak/ <i>Quercus agrifolia</i>	25"
241	Coast Live Oak/ <i>Quercus agrifolia</i>	9"
242	Coast Live Oak/ <i>Quercus agrifolia</i>	12"
243	Coast Live Oak/ <i>Quercus agrifolia</i>	8"
244	Coast Live Oak/ <i>Quercus agrifolia</i>	16/13"
245	Coast Live Oak/ <i>Quercus agrifolia</i>	21" @ 2'
246	Coast Live Oak/ <i>Quercus agrifolia</i>	12/17"
247	Coast Live Oak/ <i>Quercus agrifolia</i>	26" @ 2'
248	Black Oak/ <i>Quercus kelloggii</i>	15"
249	Coast Live Oak/ <i>Quercus agrifolia</i>	17"
250	Coast Live Oak/ <i>Quercus agrifolia</i>	9"
251	Coast Live Oak/ <i>Quercus agrifolia</i>	14" @ 3'
252	California Bay/ <i>Umbellularia californica</i>	9/13/13"
253	Coast Live Oak/ <i>Quercus agrifolia</i>	20"
254	Coast Live Oak/ <i>Quercus agrifolia</i>	14"
255	Coast Live Oak/ <i>Quercus agrifolia</i>	7/11"
256	Coast Live Oak/ <i>Quercus agrifolia</i>	10"
257	Coast Live Oak/ <i>Quercus agrifolia</i>	16"
257A	Black Oak/ <i>Quercus kelloggii</i>	8"
262	Coast Live Oak/ <i>Quercus agrifolia</i>	11"
263	California Bay/ <i>Umbellularia californica</i>	12" @ 3'
264	Black Oak/ <i>Quercus kelloggii</i>	14"
265	Coast Live Oak/ <i>Quercus agrifolia</i>	19"
266	Black Oak/ <i>Quercus kelloggii</i>	25" @ 2'
289	California Bay/ <i>Umbellularia californica</i>	9" @ 2.5'
331	Coast Live Oak/ <i>Quercus agrifolia</i>	9"
332	Coast Live Oak/ <i>Quercus agrifolia</i>	13"
333	Coast Live Oak/ <i>Quercus agrifolia</i>	9"
335	Coast Live Oak/ <i>Quercus agrifolia</i>	19"
336	California Bay/ <i>Umbellularia californica</i>	6"
337	Coast Live Oak/ <i>Quercus agrifolia</i>	9"
338	California Bay/ <i>Umbellularia californica</i>	12"/7"/4"
339	California Bay/ <i>Umbellularia californica</i>	8" @ 3'
340	Coast Live Oak/ <i>Quercus agrifolia</i>	21"
341	California Bay/ <i>Umbellularia californica</i>	7/5/5"
342	Coast Live Oak/ <i>Quercus agrifolia</i>	7"
343	Coast Live Oak/ <i>Quercus agrifolia</i>	17"
344	California Bay/ <i>Umbellularia californica</i>	5/5/7"

** Indicates a Dying Tree, Per the Project Arborist, Not Needing Mitigation

H Designates a Heritage Tree as defined in Chapter 17-24

TREE	SPECIES	TRUNK DIAMETER (In.)
345	California Bay/ <i>Umbellularia californica</i>	5"/6"
346	California Bay/ <i>Umbellularia californica</i>	4/4/5/5/8"
347	California Bay/ <i>Umbellularia californica</i>	4/5/5/6/6"
348	California Bay/ <i>Umbellularia californica</i>	4/5/6"
349	Coast Live Oak/ <i>Quercus agrifolia</i>	17"
350	Coast Live Oak/ <i>Quercus agrifolia</i>	11"
351	Coast Live Oak/ <i>Quercus agrifolia</i>	10"
352	Coast Live Oak/ <i>Quercus agrifolia</i>	16"
353	Coast Live Oak/ <i>Quercus agrifolia</i>	15"
355	California Bay/ <i>Umbellularia californica</i>	5/19"
356	California Bay/ <i>Umbellularia californica</i>	15"
357	Coast Live Oak/ <i>Quercus agrifolia</i>	8"
358	Coast Live Oak/ <i>Quercus agrifolia</i>	11"
359	Coast Live Oak/ <i>Quercus agrifolia</i>	12"
360	Coast Live Oak/ <i>Quercus agrifolia</i>	19"
361	Coast Live Oak/ <i>Quercus agrifolia</i>	15"
362	Coast Live Oak/ <i>Quercus agrifolia</i>	17"
363	Coast Live Oak/ <i>Quercus agrifolia</i>	9"
364	California Bay/ <i>Umbellularia californica</i>	15"/10"/7"
365	Coast Live Oak/ <i>Quercus agrifolia</i>	23"
366	Valley Oak/ <i>Quercus lobata</i>	19"
367	Black Oak/ <i>Quercus kelloggii</i>	23"
368	Coast Live Oak/ <i>Quercus agrifolia</i>	17"
369	Coast Live Oak/ <i>Quercus agrifolia</i>	12"
370	Coast Live Oak/ <i>Quercus agrifolia</i>	17"
371	California Bay/ <i>Umbellularia californica</i>	6"/5"
372	California Bay/ <i>Umbellularia californica</i>	6"
373	California Bay/ <i>Umbellularia californica</i>	7"
374	California Bay/ <i>Umbellularia californica</i>	5"/4"
375	Coast Live Oak/ <i>Quercus agrifolia</i>	17"
376	California Bay/ <i>Umbellularia californica</i>	6/6/7"
377	California Bay/ <i>Umbellularia californica</i>	5/6"
379	Coast Live Oak/ <i>Quercus agrifolia</i>	15"
380	Coast Live Oak/ <i>Quercus agrifolia</i>	4/5/11"
381	California Bay/ <i>Umbellularia californica</i>	6/7"
382	California Bay/ <i>Umbellularia californica</i>	5/6"
383	Coast Live Oak/ <i>Quercus agrifolia</i>	14"
384	Coast Live Oak/ <i>Quercus agrifolia</i>	14/16"
385	Coast Live Oak/ <i>Quercus agrifolia</i>	14"
387	Black Oak/ <i>Quercus kelloggii</i>	16"
388	California Bay/ <i>Umbellularia californica</i>	13/26" @ 3'
389	Black Oak/ <i>Quercus kelloggii</i>	13" @ 3'
390	California Bay/ <i>Umbellularia californica</i>	11"
391	Black Oak/ <i>Quercus kelloggii</i>	11"
392	Black Oak/ <i>Quercus kelloggii</i>	15"
393	Coast Live Oak/ <i>Quercus agrifolia</i>	9"
394	California Bay/ <i>Umbellularia californica</i>	4/7/16"
395	Coast Live Oak/ <i>Quercus agrifolia</i>	8/19"
396	Coast Live Oak/ <i>Quercus agrifolia</i>	19" @ 3'
397	Coast Live Oak/ <i>Quercus agrifolia</i>	12"
398	California Bay/ <i>Umbellularia californica</i>	12"
399	California Bay/ <i>Umbellularia californica</i>	16"
400	Coast Live Oak/ <i>Quercus agrifolia</i>	11" @ 4'
401	Coast Live Oak/ <i>Quercus agrifolia</i>	20"
402	California Bay/ <i>Umbellularia californica</i>	12"
403	California Bay/ <i>Umbellularia californica</i>	19" @ 2'

** Indicates a Dying Tree, Per the Project Arborist, Not Needing Mitigation

H Designates a Heritage Tree as defined in Chapter 17-24

TREE	SPECIES	TRUNK DIAMETER (In.)
404	Coast Live Oak/ <i>Quercus agrifolia</i>	9"
405	Coast Live Oak/ <i>Quercus agrifolia</i>	22" @ 4'
406	California Bay/ <i>Umbellularia californica</i>	11"
407	California Bay/ <i>Umbellularia californica</i>	6/26"
408	Coast Live Oak/ <i>Quercus agrifolia</i>	11" @ 4'
409	Coast Live Oak/ <i>Quercus agrifolia</i>	16"
410	Coast Live Oak/ <i>Quercus agrifolia</i>	13"
411	Coast Live Oak/ <i>Quercus agrifolia</i>	15"
412	Coast Live Oak/ <i>Quercus agrifolia</i>	14"
413	Black Oak/ <i>Quercus kelloggii</i>	14"
415	California Bay/ <i>Umbellularia californica</i>	17"
416	California Bay/ <i>Umbellularia californica</i>	13"
417	Black Oak/ <i>Quercus kelloggii</i>	13"
418	Black Oak/ <i>Quercus kelloggii</i>	10"
419	Coast Live Oak/ <i>Quercus agrifolia</i>	9"
420	Coast Live Oak/ <i>Quercus agrifolia</i>	13"/22"
422	Black Oak/ <i>Quercus kelloggii</i>	12"
423	Black Oak/ <i>Quercus kelloggii</i>	8"
425	Coast Live Oak/ <i>Quercus agrifolia</i>	7"
426	Black Oak/ <i>Quercus kelloggii</i>	14"
427	Coast Live Oak/ <i>Quercus agrifolia</i>	13" @ 3'
428	Coast Live Oak/ <i>Quercus agrifolia</i>	18"
429	Coast Live Oak/ <i>Quercus agrifolia</i>	12"
430	Coast Live Oak/ <i>Quercus agrifolia</i>	19"
460	Black Oak/ <i>Quercus kelloggii</i>	11"
461	Valley Oak/ <i>Quercus lobata</i>	12"
462	Coast Live Oak/ <i>Quercus agrifolia</i>	14"
463	California Bay/ <i>Umbellularia californica</i>	9"/7"/10"
464	Coast Live Oak/ <i>Quercus agrifolia</i>	9"
465	Valley Oak/ <i>Quercus lobata</i>	19"
466	Black Oak/ <i>Quercus kelloggii</i>	11"
467	California Bay/ <i>Umbellularia californica</i>	14"
468	Coast Live Oak/ <i>Quercus agrifolia</i>	8/11"
469	Valley Oak/ <i>Quercus lobata</i>	17"
470	Buckeye/ <i>Aesculus californica</i>	5/6/8"
471	Valley Oak/ <i>Quercus lobata</i>	9"
472	California Bay/ <i>Umbellularia californica</i>	5/6/6"
473	California Bay/ <i>Umbellularia californica</i>	12"
474	Coast Live Oak/ <i>Quercus agrifolia</i>	15" @ 3'
475	Coast Live Oak/ <i>Quercus agrifolia</i>	13"
476	Valley Oak/ <i>Quercus lobata</i>	13/14"
477	Black Oak/ <i>Quercus kelloggii</i>	9"
478	Black Oak/ <i>Quercus kelloggii</i>	10"
479	California Bay/ <i>Umbellularia californica</i>	7"
480	Black Oak/ <i>Quercus kelloggii</i>	11"
481	Black Oak/ <i>Quercus kelloggii</i>	6"
482	Valley Oak/ <i>Quercus lobata</i>	12"
487	Valley Oak/ <i>Quercus lobata</i>	14"
488	Coast Live Oak/ <i>Quercus agrifolia</i>	9"
494	Coast Live Oak/ <i>Quercus agrifolia</i>	9" @ 3.5'
523	Buckeye/ <i>Aesculus californica</i>	6"
524	California Bay/ <i>Umbellularia californica</i>	8"/5"
525	Coast Live Oak/ <i>Quercus agrifolia</i>	13" @ 3'
526	Coast Live Oak/ <i>Quercus agrifolia</i>	12"
527	Coast Live Oak/ <i>Quercus agrifolia</i>	10"
533	Coast Live Oak/ <i>Quercus agrifolia</i>	7/8"

** Indicates a Dying Tree, Per the Project Arborist, Not Needing Mitigation

H Designates a Heritage Tree as defined in Chapter 17-24

TREE	SPECIES	TRUNK DIAMETER (In.)
534	California Bay/ <i>Umbellularia californica</i>	5/8"
535	Coast Live Oak/ <i>Quercus agrifolia</i>	9"
608	Coast Live Oak/ <i>Quercus agrifolia</i>	11"
609D	Coast Live Oak/ <i>Quercus agrifolia</i>	9"
610	Coast Live Oak/ <i>Quercus agrifolia</i>	7"
611	California Bay/ <i>Umbellularia californica</i>	9"
612	California Bay/ <i>Umbellularia californica</i>	14"
613	Coast Live Oak/ <i>Quercus agrifolia</i>	13"
614	Coast Live Oak/ <i>Quercus agrifolia</i>	11"
615	Coast Live Oak/ <i>Quercus agrifolia</i>	14"
616	Coast Live Oak/ <i>Quercus agrifolia</i>	5"
617	California Bay/ <i>Umbellularia californica</i>	9"
618	California Bay/ <i>Umbellularia californica</i>	13"
619	Coast Live Oak/ <i>Quercus agrifolia</i>	12"
620	Coast Live Oak/ <i>Quercus agrifolia</i>	10"
621	Coast Live Oak/ <i>Quercus agrifolia</i>	9"
622	Coast Live Oak/ <i>Quercus agrifolia</i>	9/12"
623	California Bay/ <i>Umbellularia californica</i>	12"
624	Coast Live Oak/ <i>Quercus agrifolia</i>	6"
625	Coast Live Oak/ <i>Quercus agrifolia</i>	12"
626	Coast Live Oak/ <i>Quercus agrifolia</i>	8"
627	Coast Live Oak/ <i>Quercus agrifolia</i>	6"
628	Coast Live Oak/ <i>Quercus agrifolia</i>	7"
629	Valley Oak/ <i>Quercus lobata</i>	22"
630	Coast Live Oak/ <i>Quercus agrifolia</i>	18"
631	Coast Live Oak/ <i>Quercus agrifolia</i>	12"
632	Coast Live Oak/ <i>Quercus agrifolia</i>	20"
633	Coast Live Oak/ <i>Quercus agrifolia</i>	14"
634	Coast Live Oak/ <i>Quercus agrifolia</i>	9"
635	Coast Live Oak/ <i>Quercus agrifolia</i>	15"
636	Coast Live Oak/ <i>Quercus agrifolia</i>	16"
637	Coast Live Oak/ <i>Quercus agrifolia</i>	18"
638	Coast Live Oak/ <i>Quercus agrifolia</i>	13"
639	Black Oak/ <i>Quercus kelloggii</i>	16"
640	California Bay/ <i>Umbellularia californica</i>	15"
642	Coast Live Oak/ <i>Quercus agrifolia</i>	13"
643	California Bay/ <i>Umbellularia californica</i>	17"
644	Coast Live Oak/ <i>Quercus agrifolia</i>	21"
645	Coast Live Oak/ <i>Quercus agrifolia</i>	11"
646	Coast Live Oak/ <i>Quercus agrifolia</i>	13"
647	Black Oak/ <i>Quercus kelloggii</i>	16"
648	California Bay/ <i>Umbellularia californica</i>	11"
649	Coast Live Oak/ <i>Quercus agrifolia</i>	12"
650	Coast Live Oak/ <i>Quercus agrifolia</i>	13"
651	Coast Live Oak/ <i>Quercus agrifolia</i>	14"
652	Coast Live Oak/ <i>Quercus agrifolia</i>	14"
653	Coast Live Oak/ <i>Quercus agrifolia</i>	13"
653A	California Bay/ <i>Umbellularia californica</i>	6/6"
654	Coast Live Oak/ <i>Quercus agrifolia</i>	13" @ 3.5'
656	Coast Live Oak/ <i>Quercus agrifolia</i>	10"
657	Coast Live Oak/ <i>Quercus agrifolia</i>	9"
658	Coast Live Oak/ <i>Quercus agrifolia</i>	12"
659	Coast Live Oak/ <i>Quercus agrifolia</i>	6"
660	California Bay/ <i>Umbellularia californica</i>	5"/6"
661	California Bay/ <i>Umbellularia californica</i>	4/5/5/5/6"
662	Coast Live Oak/ <i>Quercus agrifolia</i>	18"

** Indicates a Dying Tree, Per the Project Arborist, Not Needing Mitigation

H Designates a Heritage Tree as defined in Chapter 17-24

TREE	SPECIES	TRUNK DIAMETER (In.)
663	Coast Live Oak/ <i>Quercus agrifolia</i>	16"
664	Coast Live Oak/ <i>Quercus agrifolia</i>	6"
665	Coast Live Oak/ <i>Quercus agrifolia</i>	16"
668	California Bay/ <i>Umbellularia californica</i>	5"
672	California Bay/ <i>Umbellularia californica</i>	5/6"
674	California Bay/ <i>Umbellularia californica</i>	5"/5"
676	Coast Live Oak/ <i>Quercus agrifolia</i>	19"/22"
678	Coast Live Oak/ <i>Quercus agrifolia</i>	10"
679	Coast Live Oak/ <i>Quercus agrifolia</i>	16"
680	California Bay/ <i>Umbellularia californica</i>	4/4/5/8"
681	Buckeye/ <i>Aesculus californica</i>	5"
682	Coast Live Oak/ <i>Quercus agrifolia</i>	11"
683	Black Oak/ <i>Quercus kelloggii</i>	11"
684	Coast Live Oak/ <i>Quercus agrifolia</i>	12"
685	California Bay/ <i>Umbellularia californica</i>	6"
686	Coast Live Oak/ <i>Quercus agrifolia</i>	7"
687	Coast Live Oak/ <i>Quercus agrifolia</i>	13"
689	Coast Live Oak/ <i>Quercus agrifolia</i>	15"/13"
689A	Buckeye/ <i>Aesculus californica</i>	5"
741	Coast Live Oak/ <i>Quercus agrifolia</i>	12/13/15/16"
750	Coast Live Oak/ <i>Quercus agrifolia</i>	15"
751	Coast Live Oak/ <i>Quercus agrifolia</i>	17"
752	Coast Live Oak/ <i>Quercus agrifolia</i>	17"
797	Coast Live Oak/ <i>Quercus agrifolia</i>	12"
798	Black Oak/ <i>Quercus kelloggi</i>	16"
799	Coast Live Oak/ <i>Quercus agrifolia</i>	13"/13"
800	Coast Live Oak/ <i>Quercus agrifolia</i>	5/10/14/17"
801	Coast Live Oak/ <i>Quercus agrifolia</i>	17"
901	California Bay/ <i>Umbellularia californica</i>	5/9" @ 2'
902	California Bay/ <i>Umbellularia californica</i>	4/4/7"
903	Coast Live Oak/ <i>Quercus agrifolia</i>	10"
904	Coast Live Oak/ <i>Quercus agrifolia</i>	6"
906	California Bay/ <i>Umbellularia californica</i>	6" (+ small stems)
907	Coast Live Oak/ <i>Quercus agrifolia</i>	6"
908	California Bay/ <i>Umbellularia californica</i>	4/4" (+ small stems)
909	California Bay/ <i>Umbellularia californica</i>	6"
910	California Bay/ <i>Umbellularia californica</i>	4"
911	California Bay/ <i>Umbellularia californica</i>	5" (+ small stems)
912	California Bay/ <i>Umbellularia californica</i>	4/5/5"
914	California Bay/ <i>Umbellularia californica</i>	4/4"
916	California Bay/ <i>Umbellularia californica</i>	4" (+ small stems)
917	California Bay/ <i>Umbellularia californica</i>	4/5" (+ small stems)
918	California Bay/ <i>Umbellularia californica</i>	4/5" (+ small stems)
919	California Bay/ <i>Umbellularia californica</i>	5"
920	California Bay/ <i>Umbellularia californica</i>	5
921	California Bay/ <i>Umbellularia californica</i>	4/5/5"
922	California Bay/ <i>Umbellularia californica</i>	5/6"
924	California Bay/ <i>Umbellularia californica</i>	5"
928	California Bay/ <i>Umbellularia californica</i>	6"
931	California Bay/ <i>Umbellularia californica</i>	4/6/6"
932	California Bay/ <i>Umbellularia californica</i>	4" (+ small stems)
936	California Bay/ <i>Umbellularia californica</i>	4"
937	California Bay/ <i>Umbellularia californica</i>	4/5"
939	Buckeye/ <i>Aesculus californica</i>	6"
940	California Bay/ <i>Umbellularia californica</i>	5"
941	Buckeye/ <i>Aesculus californica</i>	4/5"

** Indicates a Dying Tree, Per the Project Arborist, Not Needing Mitigation

H Designates a Heritage Tree as defined in Chapter 17-24

TREE	SPECIES	TRUNK DIAMETER (In.)
942	Buckeye/ <i>Aesculus californica</i>	5/5" @ 3'
943	California Bay/ <i>Umbellularia californica</i>	5/5"
945	Coast Live Oak/ <i>Quercus agrifolia</i>	5" @ 3'
946	Buckeye/ <i>Aesculus californica</i>	5" @ 3'
947	California Bay/ <i>Umbellularia californica</i>	4" (+ small stems)
948	California Bay/ <i>Umbellularia californica</i>	4" (+ small stems)
949	Buckeye/ <i>Aesculus californica</i>	7"
950	California Bay/ <i>Umbellularia californica</i>	4" (+ small stems)
951	Coast Live Oak/ <i>Quercus agrifolia</i>	8"
952	Coast Live Oak/ <i>Quercus agrifolia</i>	5"
953	Coast Live Oak/ <i>Quercus agrifolia</i>	4"
954	California Bay/ <i>Umbellularia californica</i>	4"
955	California Bay/ <i>Umbellularia californica</i>	4"
956	California Bay/ <i>Umbellularia californica</i>	5"
957	California Bay/ <i>Umbellularia californica</i>	4" (+ small stems)
958	California Bay/ <i>Umbellularia californica</i>	5"
959	California Bay/ <i>Umbellularia californica</i>	5" (+ small stems)
960	California Bay/ <i>Umbellularia californica</i>	5" (+ small stems)
961	California Bay/ <i>Umbellularia californica</i>	5" (+ small stems)
962	Coast Live Oak/ <i>Quercus agrifolia</i>	8"
963	California Bay/ <i>Umbellularia californica</i>	5/6"
964	California Bay/ <i>Umbellularia californica</i>	5" (+ small stems)
965	California Bay/ <i>Umbellularia californica</i>	4" (+ small stems)
966	California Bay/ <i>Umbellularia californica</i>	4" (+ small stems)
967	Coast Live Oak/ <i>Quercus agrifolia</i>	4/4/7/9/10"
968	California Bay/ <i>Umbellularia californica</i>	4"
969	California Bay/ <i>Umbellularia californica</i>	6"
970	California Bay/ <i>Umbellularia californica</i>	5"
971	California Bay/ <i>Umbellularia californica</i>	4/4" (+ small stems)
972	California Bay/ <i>Umbellularia californica</i>	4/5" (+ small stems)
973	California Bay/ <i>Umbellularia californica</i>	5/5/6"
974	Coast Live Oak/ <i>Quercus agrifolia</i>	5"
975	Coast Live Oak/ <i>Quercus agrifolia</i>	6/9"
976	California Bay/ <i>Umbellularia californica</i>	5"
977	California Bay/ <i>Umbellularia californica</i>	4"
978	California Bay/ <i>Umbellularia californica</i>	6"
979	California Bay/ <i>Umbellularia californica</i>	4"
980	California Bay/ <i>Umbellularia californica</i>	4/4" (+ small stems)
981	California Bay/ <i>Umbellularia californica</i>	4" (+ small stems)
982	Coast Live Oak/ <i>Quercus agrifolia</i>	6"
984	Buckeye/ <i>Aesculus californica</i>	4

Total Replacement Trees Required: (total trunk dia.) 3560 / 6 = 594 x 2 = 1188

Heritage Trees are defined per Chapter 17-24 as follows:

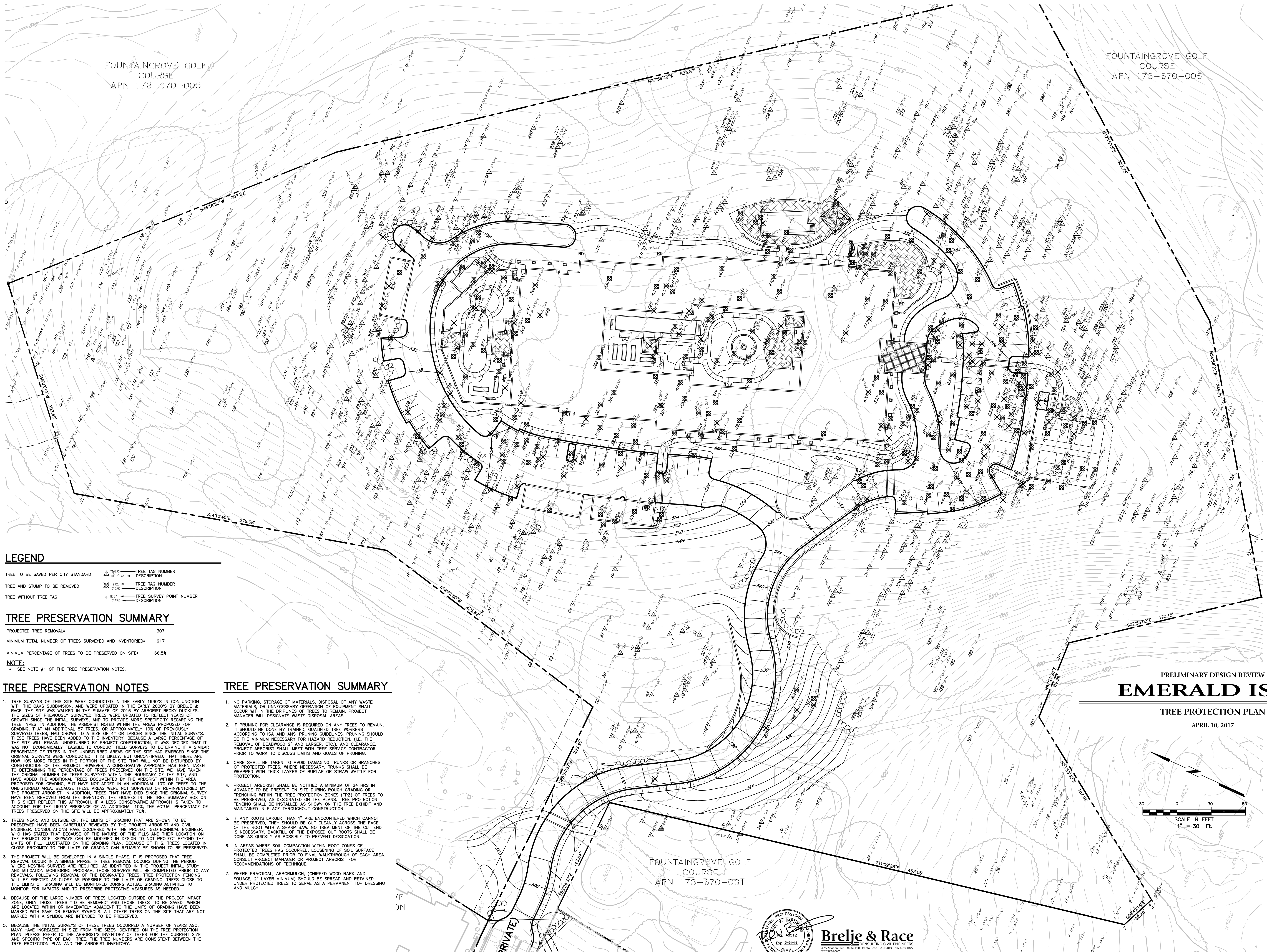
<u>Species of Tree</u>	<u>Diameter</u>	<u>Circumference</u>
Valley Oak/ <i>Quercus lobata</i>	6"	19"
Coast Live Oak/ <i>Quercus agrifolia</i>	18"	57"
Black Oak/ <i>Quercus kelloggii</i>	18"	57"
California Bay/ <i>Umbellularia californica</i>	24"	75"

** Indicates a Dying Tree, Per the Project Arborist, Not Needing Mitigation

H Designates a Heritage Tree as defined in Chapter 17-24

FOUNTAINGROVE GOLF COURSE
APN 173-670-005

FOUNTAINGROVE GOLF COURSE
APN 173-670-005



LEGEND

TREE TO BE SAVED PER CITY STANDARD TREE TAG NUMBER
TREE AND STUMP TO BE REMOVED TREE TAG NUMBER
TREE WITHOUT TREE TAG TREE SURVEY POINT NUMBER

TREE PRESERVATION SUMMARY

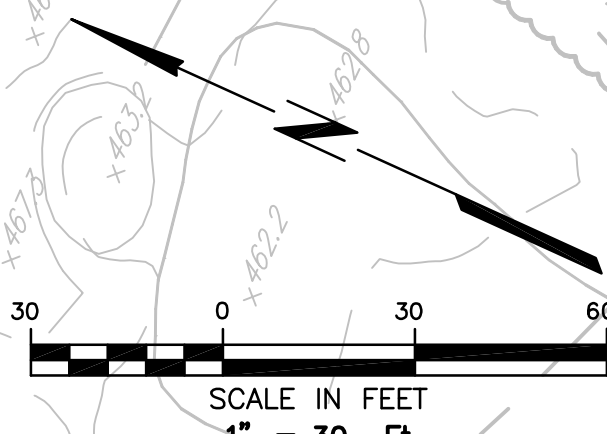
PROJECTED TREE REMOVAL*	307
MINIMUM TOTAL NUMBER OF TREES SURVEYED AND INVENTORIED*	917
MINIMUM PERCENTAGE OF TREES TO BE PRESERVED ON SITE*	66.5%

NOTE:
* SEE NOTE #1 OF THE TREE PRESERVATION NOTES.

- TREE PRESERVATION NOTES**
- TREE SURVEYS OF THIS SITE WERE CONDUCTED IN THE EARLY 1990'S IN CONJUNCTION WITH THE OAKS SUBDIVISION, AND WERE UPDATED IN THE EARLY 2000'S BY BRELJE & RACE. THE SITE WAS WALKED IN THE SUMMER OF 2016 BY ARBORIST BECKY DUCKLES. THE SIZES OF PREVIOUSLY SURVEYED TREES WERE UPDATED TO REFLECT YEARS OF GROWTH SINCE THE INITIAL SURVEYS, AND TO PROVIDE MORE SPECIFICITY REGARDING THE TREE TYPES. IN ADDITION, THE ARBORIST NOTED WITHIN THE AREAS PROPOSED FOR GRADING, THAT AN ADDITIONAL 87 TREES, OR APPROXIMATELY 10% OF PREVIOUSLY SURVEYED TREES, HAD GROWN TO A SIZE OF 4" OR LARGER SINCE THE INITIAL SURVEYS. THESE TREES HAVE BEEN ADDED TO THE INVENTORY, BECAUSE A LARGE PERCENTAGE OF THE SITE WILL REMAIN UNDISTURBED BY PROJECT CONSTRUCTION. IT WAS DECIDED THAT IT WAS NOT ECONOMICALLY FEASIBLE TO CONDUCT FIELD SURVEYS TO DETERMINE IF A SIMILAR PERCENTAGE OF TREES IN THE UNDISTURBED AREAS OF THE SITE HAD EMERGED SINCE THE ORIGINAL SURVEYS WERE CONDUCTED. IT IS LIKELY, BUT UNCONFIRMED, THAT THERE ARE NOW 10% MORE TREES IN THE PORTION OF THE SITE THAT WILL NOT BE DISTURBED BY CONSTRUCTION OF THE PROJECT. HOWEVER, A CONSERVATIVE APPROACH HAS BEEN TAKEN TO DETERMINE THE PERCENTAGE OF TREES PRESERVED ON THE SITE. WE HAVE TAKEN THE ORIGINAL NUMBER OF TREES SURVEYED WITHIN THE BOUNDARY OF THE SITE, AND HAVE ADDED THE ADDITIONAL TREES DOCUMENTED BY THE ARBORIST WITHIN THE AREA PROPOSED FOR GRADING, BUT HAVE NOT ADDED IN AN ADDITIONAL 10% OF TREES TO THE UNDISTURBED AREA, BECAUSE THESE AREAS WERE NOT SURVEYED OR RE-INVENTORIED BY THE PROJECT ARBORIST. IN ADDITION, TREES THAT HAVE DIED SINCE THE ORIGINAL SURVEY HAVE BEEN REMOVED FROM THE INVENTORY. THE FIGURES IN THE TREE SUMMARY BOX ON THIS SHEET REFLECT THIS APPROACH. IF A LESS CONSERVATIVE APPROACH IS TAKEN TO ACCOUNT FOR THE LIKELY PRESENCE OF AN ADDITIONAL 10% THE ACTUAL PERCENTAGE OF TREES PRESERVED ON THE SITE WILL BE APPROXIMATELY 70%.
 - TREES NEAR, AND OUTSIDE OF, THE LIMITS OF GRADING THAT ARE SHOWN TO BE PRESERVED HAVE BEEN CAREFULLY REVIEWED BY THE PROJECT ARBORIST AND CIVIL ENGINEER. CONSULTATIONS HAVE OCCURRED WITH THE PROJECT GEOTECHNICAL ENGINEER, WHO HAS STATED THAT BECAUSE OF THE NATURE OF THE FILLS AND THEIR LOCATION ON THE PROJECT SITE, KERYS CAN BE MODIFIED IN DESIGN TO NOT PROJECT BEYOND THE LIMITS OF FILL ILLUSTRATED ON THE GRADING PLAN. BECAUSE OF THIS, TREES LOCATED IN CLOSE PROXIMITY TO THE LIMITS OF GRADING CAN RELIABLY BE SHOWN TO BE PRESERVED.
 - THE PROJECT WILL BE DEVELOPED IN A SINGLE PHASE. IT IS PROPOSED THAT TREE REMOVAL OCCUR IN A SINGLE PHASE. IF TREE REMOVAL OCCURS DURING THE PERIOD WHERE NESTING SURVEYS ARE REQUIRED, AS IDENTIFIED BY THE PROJECT INITIAL STUDY AND MITIGATION MONITORING PROGRAM, THOSE SURVEYS WILL BE COMPLETED PRIOR TO ANY REMOVALS. FOLLOWING REMOVAL OF THE DESIGNATED TREES, TREE PROTECTION FENCING WILL BE ERRECTED AS CLOSE AS POSSIBLE TO THE LIMITS OF GRADING. TREES CLOSE TO THE LIMITS OF GRADING WILL BE MONITORED DURING ACTUAL GRADING ACTIVITIES TO MONITOR FOR IMPACTS AND TO PRESCRIBE PROTECTIVE MEASURES AS NEEDED.
 - BECAUSE OF THE LARGE NUMBER OF TREES LOCATED OUTSIDE OF THE PROJECT IMPACT ZONE, ONLY THOSE TREES TO BE REMOVED AND THOSE TREES TO BE SAVED WHOSE ARE LOCATED WITHIN OR IMMEDIATELY ADJACENT TO THE LIMITS OF GRADING HAVE BEEN MARKED WITH SAVE OR REMOVE SYMBOLS. ALL OTHER TREES ON THE SITE THAT ARE NOT MARKED WITH A SYMBOL ARE INTENDED TO BE PRESERVED.
 - BECAUSE THE INITIAL SURVEYS OF THESE TREES OCCURRED A NUMBER OF YEARS AGO, MANY HAVE INCREASED IN SIZE FROM THE SIZES IDENTIFIED ON THE TREE PROTECTION PLAN. PLEASE REFER TO THE ARBORIST'S INVENTORY OF TREES FOR THE CURRENT SIZE AND SPECIFIC TYPE OF EACH TREE. THE TREE NUMBERS ARE CONSISTENT BETWEEN THE TREE PROTECTION PLAN AND THE ARBORIST INVENTORY.

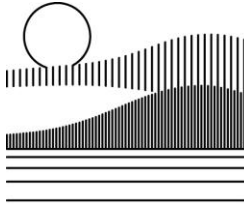
- TREE PRESERVATION SUMMARY**
- NO PARKING, STORAGE OF MATERIALS, DISPOSAL OF ANY WASTE MATERIALS, OR UNNECESSARY OPERATION OF EQUIPMENT SHALL OCCUR WITHIN THE DRIPLINES OF TREES TO REMAIN. PROJECT MANAGER WILL DESIGNATE WASTE DISPOSAL AREAS.
 - IF PRUNING FOR CLEARANCE IS REQUIRED ON ANY TREES TO REMAIN, IT SHOULD BE DONE BY TRAINED, QUALIFIED TREE WORKERS ACCORDING TO ISA AND ANSI PRUNING GUIDELINES. PRUNING SHOULD BE THE MINIMUM NECESSARY FOR HAZARD REDUCTION, (I.E. THE REMOVAL OF DEADWOOD 2" AND LARGER, ETC.), AND CLEARANCE. PROJECT ARBORIST SHALL MEET WITH TREE SERVICE CONTRACTOR PRIOR TO WORK TO DISCUSS LIMITS AND GOALS OF PRUNING.
 - CARE SHALL BE TAKEN TO AVOID DAMAGING TRUNKS OR BRANCHES OF PROTECTED TREES. WHERE NECESSARY, TRUNKS SHALL BE WRAPPED WITH THICK LAYERS OF BURLAP OR STRAW BATTLE FOR PROTECTION.
 - PROJECT ARBORIST SHALL BE NOTIFIED A MINIMUM OF 24 HRS IN ADVANCE TO BE PRESENT ON SITE DURING ROUGH GRADING OR TRENCHING WITHIN THE TREE PROTECTION ZONES (TPZ) OF TREES TO BE PRESERVED, AS DESIGNATED ON THE PLANS. TREE PROTECTION FENCING SHALL BE INSTALLED AS SHOWN ON THE TREE EXHIBIT AND MAINTAINED IN PLACE THROUGHOUT CONSTRUCTION.
 - IF ANY ROOTS LARGER THAN 1" ARE ENCOUNTERED WHICH CANNOT BE PRESERVED, THEY SHOULD BE CUT CLEANLY ACROSS THE FACE OF THE ROOT WITH A SHARP SAW. NO TREATMENT OF THE CUT END IS NECESSARY. BACKFILL OF THE EXPOSED CUT ROOTS SHALL BE DONE AS QUICKLY AS POSSIBLE TO PREVENT DESICCATION.
 - IN AREAS WHERE SOIL COMPACTION WITHIN ROOT ZONES OF PROTECTED TREES HAS OCCURRED, LOOSENING OF SOIL SURFACE SHALL BE COMPLETED PRIOR TO FINAL WALKTHROUGH OF EACH AREA. CONSULT PROJECT MANAGER OR PROJECT ARBORIST FOR RECOMMENDATIONS OF TECHNIQUE.
 - WHERE PRACTICAL, ARBORIMULCH, (CHIPPED WOOD BARK AND FOLIAGE, 2" LAYER MINIMUM) SHOULD BE SPREAD AND RETAINED UNDER PROTECTED TREES TO SERVE AS A PERMANENT TOP DRESSING AND MULCH.

PRELIMINARY DESIGN REVIEW
EMERALD ISLE
TREE PROTECTION PLAN
APRIL 10, 2017



FOUNTAINGROVE GOLF COURSE
APN 173-670-031

Brelje & Race
PROFESSIONAL ENGINEER
CIVIL
670 Ardmore Blvd., Suite 200 Santa Monica, CA 90405 (310) 516-1322
www.brelje.com



Landesign Group

LANDSCAPE ARCHITECTURE
MASTER PLANNING

3344 Gravenstein Hwy. No.
Sebastopol, CA 95472
(707) 829 - 2580

PETER A. WURTZ, RLA
CA # 2166

04/17/2017

Emerald Isle Skilled Nursing & Medical Rehab

Gullane Drive, Santa Rosa, CA

APN 173-67-016

TREE REMOVAL MITIGATION REPORT

Total Replacement Trees Required for Entire Proposed Development:

1188 - 15 gal. Size or Equivalent mitigation in larger sizes

Total Trees to Remain:	613
Total Trees to be Removed:	<u>304</u>
Total Trees, Overall Canyon Oaks Site:	917

Percentage of Trees to Remain:	66.85%
Percentage of Trees to be Removed:	33.15%

Total Replacement Trees Required: 1188 – 15 gal. Size or Equivalent Planning Director Approved Mitigation Factor

Equivalent mitigation for tree planting in larger sizes to be:

(3) 15 gal. trees = (1) 24" box size tree

(7) 15 gal. trees = (1) 36" box size tree

Proposed Replacement Trees on Site: 1188 – 15 gal. Size or Equivalent (170) 36" box (170 Total Trees equivalent to 1190, 15 gal.)

The above accounts for 100% of work required for Project Completion.
See attached Tree Replacement Mitigation calculations.

Replacement Tree Planting Schedule:

All Mitigation trees to be planted at time of overall project construction.

Prepared By:
Landesign Group
3344 Gravenstein Hwy
Sebastopol, CA 95472
707-829-2580

Prepared For:
OSL Communities, LLC
220 Concourse Blvd.
Santa Rosa, CA 95403
707-535-3209