

SRMH MOB + PARKING STRUCTURE

TREE #	SPECIES	TRUNK DIAMETER (In. @ 4'-6")	GENERAL HEALTH/CONDITION	STRUCTURAL INTEGRITY	CONSTRUCTION IMPACT/RECOMMENDATIONS
1	London Plane/ <i>Platanus x acerifolia</i>	22"	Excellent	Excellent	These London plane street trees are well-established, attractive trees which have had good (minimal) pruning in past; protected trees; can be preserved if desired
2	London Plane/ <i>Platanus x acerifolia</i>	19"	Good/Excellent	Excellent	Can be preserved if desired; minimize any grading within rootzone; protected tree
3	Coast Live Oak/ <i>Quercus agrifolia</i>	20"/28"	Good/Excellent	Good	To be removed for parking structure; protected tree
4	London Plane/ <i>Platanus x acerifolia</i>	19"	Good/Excellent	Good/Excellent	Can be preserved if desired; minimize any grading within rootzone; protected tree
5	London Plane/ <i>Platanus x acerifolia</i>	17"	Good	Good	Would have to be removed for new entry; protected tree
6	London Plane/ <i>Platanus x acerifolia</i>	12"	Fair/Good	Fair/Good	Would have to be removed for new entry; protected tree
7	London Plane/ <i>Platanus x acerifolia</i>	21"	Fair/Good	Fair/Good	Can be preserved if desired; minimize any grading within rootzone; protected tree
8	Coast Live Oak/ <i>Quercus agrifolia</i>	11"	Good/Excellent	Good/Excellent	To be removed for parking lot; protected tree
9	Coast Live Oak/ <i>Quercus agrifolia</i>	14"	Good	Good	To be removed for parking lot; protected tree
10	Coast Live Oak/ <i>Quercus agrifolia</i>	12"	Good	Good	To be removed for parking lot; protected tree
11	Coast Live Oak/ <i>Quercus agrifolia</i>	31"	Good/Excellent	Good	To be removed for parking lot; protected tree
12	Valley Oak/ <i>Quercus lobata</i>	4"	Good/Excellent	Good/Excellent	To be removed for parking lot; protected tree
13	Japanese Maple/ <i>Acer palmatum</i>	12"/12"	Good/Excellent	Good/Excellent	To be removed for parking lot; protected tree
14	Avocado/ <i>Persea</i> sp.	7"/10"	Fair	Fair	To be removed for parking; fruit tree; not protected species
15	Valley Oak/ <i>Quercus lobata</i>	15"	Fair	Fair	To be removed for parking lot; protected tree
16	Coast Live Oak/ <i>Quercus agrifolia</i>	19"	Good/Excellent	Good/Excellent	To be preserved. Roots close to surface, when grading for new paving, have arborist present to oversee root cutting
17	Coast Live Oak/ <i>Quercus agrifolia</i>	24"	Good/Excellent	Good/Excellent	To be removed for parking structure; protected tree
18	Coast Live Oak/ <i>Quercus agrifolia</i>	13"	Good/Excellent	Good	To be removed for parking structure; protected tree
19	Eucalyptus/ <i>Eucalyptus polyanthemos</i>	29"	Fair	Fair	To be removed for parking structure; protected tree
20	Eucalyptus/ <i>Eucalyptus polyanthemos</i>	20"	Poor	Poor	To be removed for parking structure; protected tree
21	Eucalyptus/ <i>Eucalyptus polyanthemos</i>	18"	Poor	Poor	To be removed for parking structure; protected tree
22	Eucalyptus/ <i>Eucalyptus polyanthemos</i>	16"	Fair	Fair/Good	To be removed for parking structure; protected tree
23	Eucalyptus/ <i>Eucalyptus polyanthemos</i>	10"/20"	Fair	Fair	To be removed for parking structure; protected tree
24	Chinese Elm/ <i>Ulmus parvifolia</i>	7"	Fair	Fair	To be removed for parking structure; protected tree

SRMH MOB + PARKING STRUCTURE

TREE #	SPECIES	TRUNK DIAMETER (In. @ 4'-6")	GENERAL HEALTH/CONDITION	STRUCTURAL INTEGRITY	CONSTRUCTION IMPACT/RECOMMENDATIONS
25	Eucalyptus/ <i>Eucalyptus</i> sp.	15"/16"	Fair/Good	Fair/Good	To be removed for parking structure; protected tree
26	Eucalyptus/ <i>Eucalyptus</i> sp.	13"/14"	Fair/Good	Fair/Good	To be removed for parking structure; protected tree
27	Eucalyptus/ <i>Eucalyptus</i> sp.	18"	Fair	Fair	To be removed for parking structure; protected tree
28	Red Maple/ <i>Acer rubrum</i>	4"/5"	Good/Excellent	Good	To be removed for parking structure; protected tree
29	Red Maple/ <i>Acer rubrum</i>	7"	Good/Excellent	Good/Excellent	To be removed for parking structure; protected tree
30	Red Maple/ <i>Acer rubrum</i>	4"	Excellent	Excellent	To be removed for parking structure; protected tree
31	Red Maple/ <i>Acer rubrum</i>	4"	Good/Excellent	Good/Excellent	To be removed for parking structure; protected tree
32	Red Maple/ <i>Acer rubrum</i>	8"	Excellent	Excellent	To be removed for parking structure; protected tree
33	Hybrid Madrone/ <i>Arbutus</i> 'Marina'	5"/6"	Good/Excellent	Good/Excellent	To be removed for parking structure; protected tree
34	Hybrid Madrone/ <i>Arbutus</i> 'Marina'	4" + multi-trunk	Good/Excellent	Good/Excellent	To be removed for parking structure; protected tree
35	Red Maple/ <i>Acer rubrum</i>	5"	Excellent	Excellent	To be removed for parking structure; protected tree
36	Red Maple/ <i>Acer rubrum</i>	6"	Excellent	Excellent	To be removed for parking structure; protected tree
37	Red Maple/ <i>Acer rubrum</i>	7"	Excellent	Excellent	To be removed for parking structure; protected tree
38	Red Maple/ <i>Acer rubrum</i>	8"	Good/Excellent	Good/Excellent	To be removed for parking structure; protected tree
39	Red Maple/ <i>Acer rubrum</i>	8"	Good/Excellent	Good/Excellent	To be removed for parking structure; protected tree
40	London Plane/ <i>Platanus</i> x <i>acerifolia</i>	9"	Good/Excellent	Good/Excellent	Can be preserved if desired; protected tree. Healthy young street trees
41	London Plane/ <i>Platanus</i> x <i>acerifolia</i>	9"	Good/Excellent	Good/Excellent	Can be preserved if desired; protected tree. Healthy young street trees
42	Birch/ <i>Betula</i> sp.	6"	Good/Excellent	Good/Excellent	Only tree of this species on site; shown to be removed; protected tree
43	Cork Oak/ <i>Quercus suber</i>	12"	Excellent	Good/Excellent	Some beautiful cork oaks on this site; shown to be removed for parking structure; protected tree
44	Cork Oak/ <i>Quercus suber</i>	15"	Excellent	Good/Excellent	To be removed for parking structure; protected tree
45	Cork Oak/ <i>Quercus suber</i>	11"	Fair/Good	Good	To be removed for parking structure; protected tree
46	Cork Oak/ <i>Quercus suber</i>	16"	Excellent	Good/Excellent	To be removed for parking structure; protected tree
47	Red Maple/ <i>Acer rubrum</i>	4"	Excellent	Excellent	To be removed for parking structure; protected tree

SRMH MOB + PARKING STRUCTURE

TREE #	SPECIES	TRUNK DIAMETER (In. @ 4'-6")	GENERAL HEALTH/CONDITION	STRUCTURAL INTEGRITY	CONSTRUCTION IMPACT/RECOMMENDATIONS
48	Red Maple/ <i>Acer rubrum</i>	5"	Excellent	Excellent	To be removed for driveway; protected tree
49	Red Maple/ <i>Acer rubrum</i>	5"	Excellent	Excellent	To be removed for driveway; protected tree
50	Mexican Fan Palm/ <i>Washingtonia rot</i>	23"	Excellent	Excellent	To be removed for driveway; protected tree
51	Italian Cypress/ <i>Cupressus sempervirens</i>	6" (estimated)	Excellent	Good	To be removed for driveway; protected tree
52	Italian Cypress/ <i>Cupressus sempervirens</i>	6" (estimated)	Excellent	Good	To be removed for driveway; protected tree
53	Honeylocust/ <i>Gleditsia triacanthos</i>	8"	Good/Excellent	Good/Excellent	To be removed for parking structure; protected tree
54	Honeylocust/ <i>Gleditsia triacanthos</i>	6"	Fair	Fair	To be removed for parking structure; protected tree
55	Honeylocust/ <i>Gleditsia triacanthos</i>	6"	Fair	Good	To be removed for parking structure; protected tree
56	Coast Live Oak/ <i>Quercus agrifolia</i>	12"	Excellent	Excellent	To be removed for parking structure; protected tree
57	Cork Oak/ <i>Quercus suber</i>	21"	Excellent	Good/Excellent	To be removed for parking structure; protected tree
58	Japanese Maple/ <i>Acer palmatum</i>	7,8,5,6"	Fair	Fair	To be removed for parking structure; protected tree
59	Coast Live Oak/ <i>Quercus agrifolia</i>	13/15"	Good/Excellent	Good	To be preserved; will need clearance pruning
60	Japanese Maple/ <i>Acer palmatum</i>	8,15" @ 3'	Good	Good	To be preserved; will need clearance pruning
61	Mimosa/ <i>Albizia julibrissin</i>	3,3,2,4"	Good	Fair	To be preserved. Multi-trunked from ground; poor form
62	Japanese Maple/ <i>Acer palmatum</i>	9/13"	Good/Excellent	Good	To be preserved
63	Cork Oak/ <i>Quercus suber</i>	14"	Excellent	Excellent	Shown to be preserved; would have to remove adjacent parking space to south
64	Cork Oak/ <i>Quercus suber</i>	12"	Excellent	Excellent	To be removed for parking lot; protected tree
65	Cork Oak/ <i>Quercus suber</i>	13"	Excellent	Excellent	To be removed for driveway; protected tree
66	Chinese Pistache/ <i>Pistacia chinensis</i>	5"	Good/Excellent	Good/Excellent	To be removed for driveway; protected tree
67	Chinese Pistache/ <i>Pistacia chinensis</i>	5"	Good/Excellent	Good/Excellent	To be removed for driveway; protected tree
68	Cork Oak/ <i>Quercus suber</i>	4"	Good/Excellent	Good/Excellent	To be removed for parking; protected tree
69	Cork Oak/ <i>Quercus suber</i>	5"	Good/Excellent	Good/Excellent	To be removed for parking; protected tree
70	Cork Oak/ <i>Quercus suber</i>	6"	Excellent	Good/Excellent	To be removed for parking; protected tree

SRMH MOB + PARKING STRUCTURE

TREE #	SPECIES	TRUNK DIAMETER (In. @ 4'-6")	GENERAL HEALTH/CONDITION	STRUCTURAL INTEGRITY	CONSTRUCTION IMPACT/RECOMMENDATIONS
71	Cork Oak/ <i>Quercus suber</i>	6"	Excellent	Excellent	To be preserved
72	Chinese Pistache/ <i>Pistacia chinensis</i>	5"	Excellent	Excellent	To be preserved
73	Chinese Pistache/ <i>Pistacia chinensis</i>	5"	Excellent	Excellent	To be preserved
74	Chinese Pistache/ <i>Pistacia chinensis</i>	5"	Good/Excellent	Good/Excellent	To be preserved
75	Cork Oak/ <i>Quercus suber</i>	9"	Excellent	Good/Excellent	To be preserved
76	Chinese Pistache/ <i>Pistacia chinensis</i>	10"	Good/Excellent	Fair	To be removed for parking structure; protected tree
77	Chinese Pistache/ <i>Pistacia chinensis</i>	7"	Good/Excellent	Fair	To be removed for parking structure; protected tree
78	Chinese Pistache/ <i>Pistacia chinensis</i>	6"	Good/Excellent	Fair	To be removed for parking structure; protected tree
79	Chinese Pistache/ <i>Pistacia chinensis</i>	7"	Good/Excellent	Fair	To be removed for parking structure; protected tree
80	Chinese Pistache/ <i>Pistacia chinensis</i>	4"	Fair	Fair	To be removed for parking structure; protected tree
81	Chinese Pistache/ <i>Pistacia chinensis</i>	6"	Fair	Fair	To be removed for parking structure; protected tree
82	Redbud/ <i>Cercis occidentalis</i>	14"	Good/Excellent	Good/Excellent	To be removed for sidewalk; protected tree
83	Mimosa/ <i>Albizia julibrissin</i>	6"	Good	Good	To be preserved
84	Japanese Maple/ <i>Acer palmatum</i>	6/7"	Fair/Good	Fair	To be preserved
85	Japanese Maple/ <i>Acer palmatum</i>	17"	Good	Good	To be preserved
86	Japanese Maple/ <i>Acer palmatum</i>	16"	Good/Excellent	Good	To be preserved

PROJECT NUMBER
152738.04

DRAWN BY
SAM TIPTON

DATE
10/5/2017

REVISIONS
REV DESCRIPTION DATE

PREPARED BY
BKF
ENGINEERS / SURVEYORS / PLANNERS
295 4TH ST, STE 300 SANTA ROSA, CA 95401
(707) 543-8500 FAX: (707) 543-8539
JOB NO. 20159136-10

PETRA
ICS
1000 Corporate Drive, Suite 200
Lafayette, CA 94502
Voice: (714) 335-3790
Fax: (714) 335-3748

Boulder Associates, Inc.
Architecture + Interior Design
1426 Pearl Street, Suite 300
Boulder, Colorado 80302
303.499.7795
www.boulderassociates.com

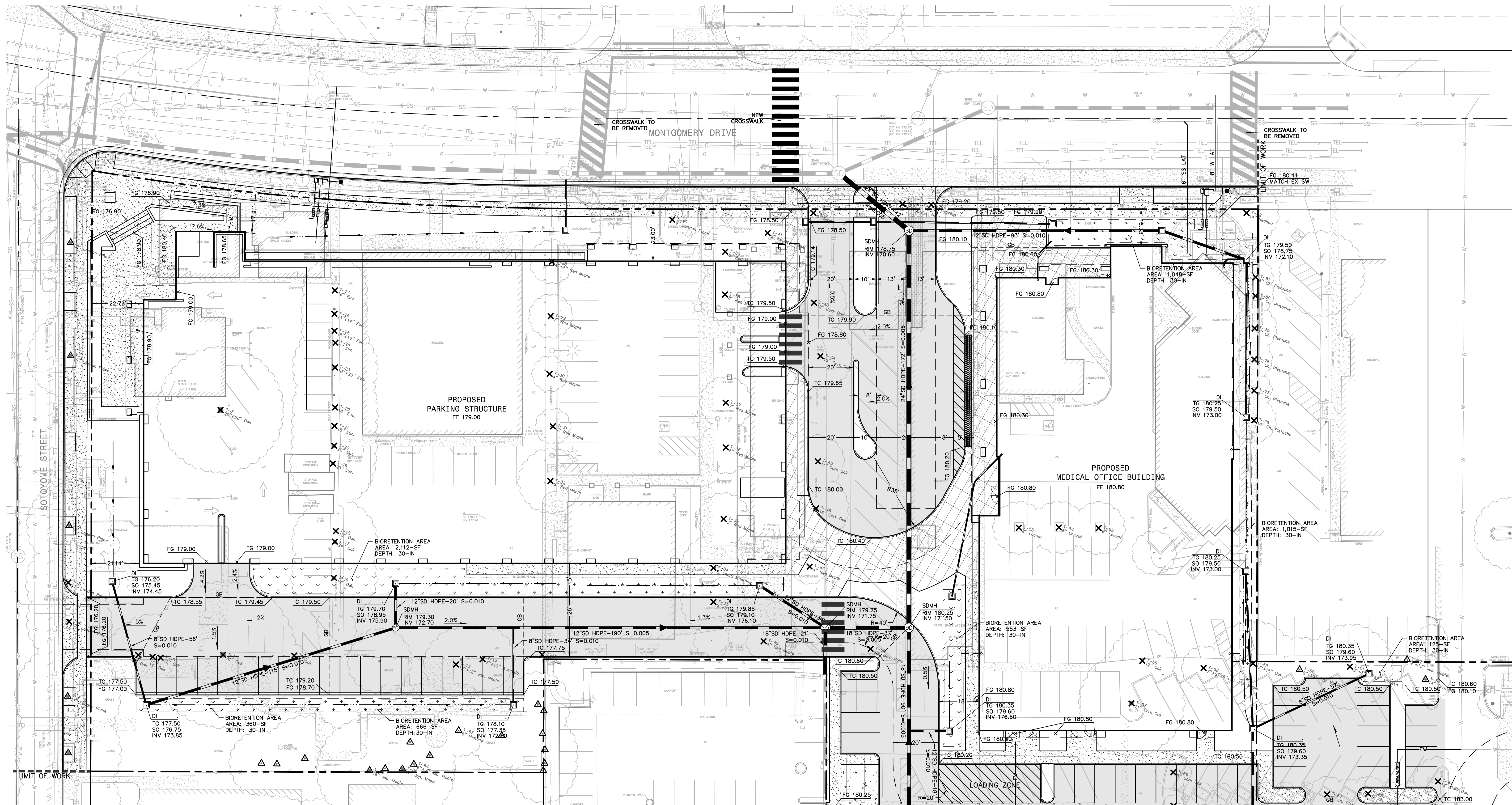
PROJECT
**SANTA ROSA
MOB & PARKING
STRUCTURE**

ADDRESS
CORNER OF MONTGOMERY
DR. & SOTOYOME ST.
SANTA ROSA, CA 95405

SHEET TITLE
**PRELIMINARY GRADING
& DRAINAGE PLAN**

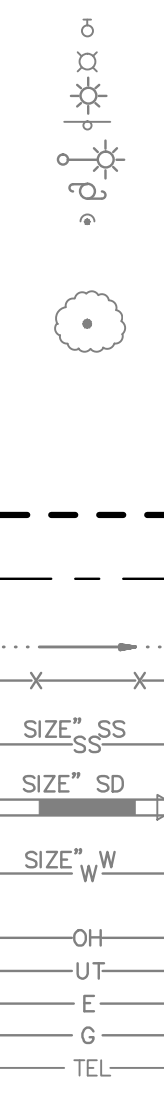
SHEET NUMBER

C-0.1



SYMBOLS & LEGEND

EXISTING



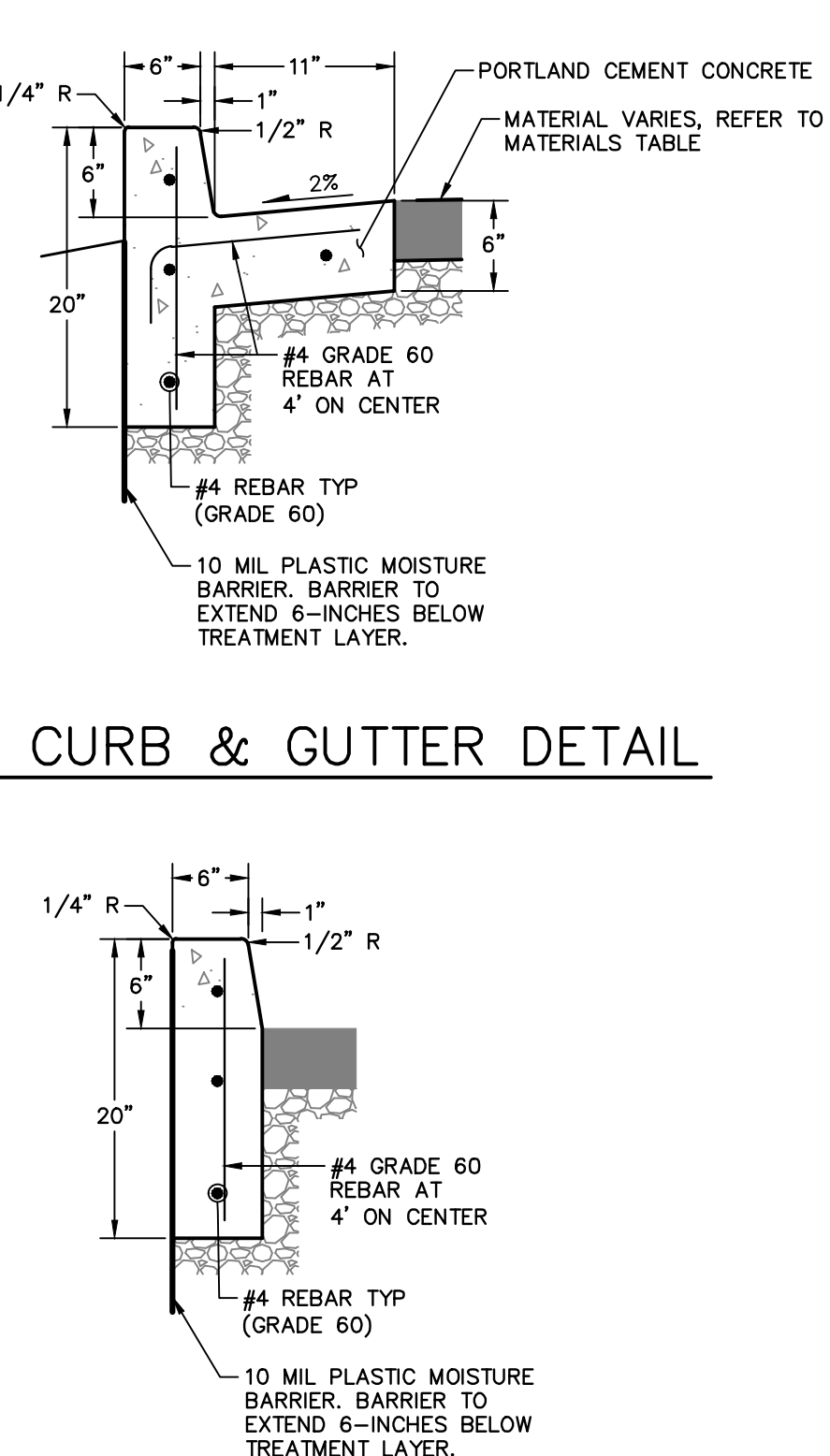
PROPOSED



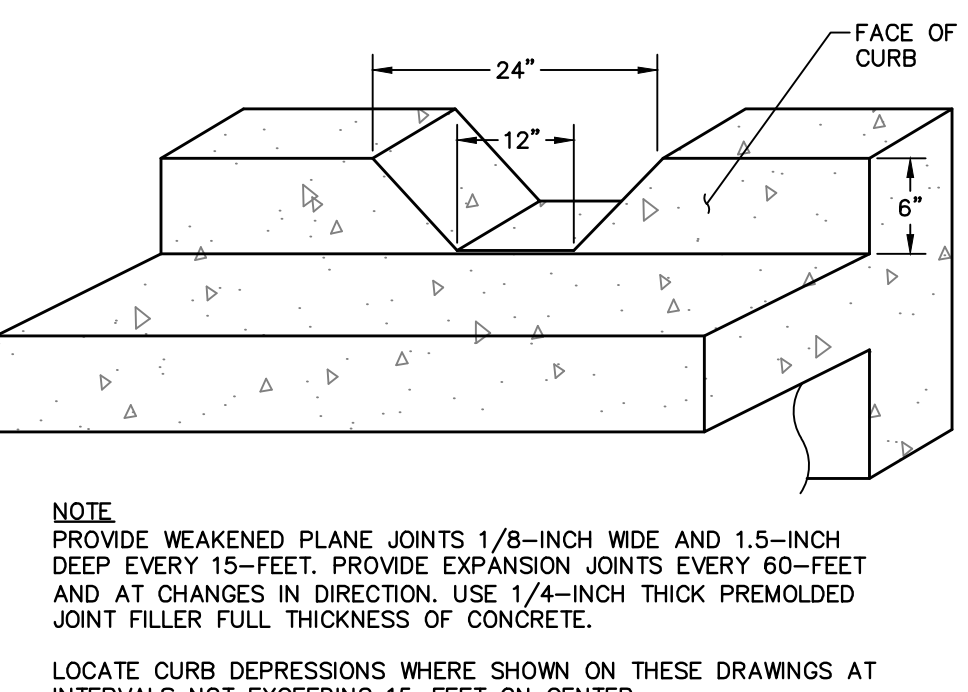
ABBREVIATIONS

±	MORE OR LESS	OH	OVERHEAD UTILITY LINE
AC	ASPHALT CONCRETE	PG&E	PACIFIC GAS & ELECTRIC
APN	ASSESSOR'S PARCEL NUMBER	R	RADIUS
BFP	BACKFLOW PREVENTOR	RTWL	RAIN WATER LEADER
BLDG	BUILDING	RWL	RAIN WATER LEADER
BLRD	BOLLARD	SD	STORM DRAIN
BW	BOTTOM OF WALL	SDCO	STORM DRAIN CLEAN OUT
CB	CATCH BASIN	SDMH	STORM DRAIN MANHOLE
CO	CLEAN OUT	SL	STREETLIGHT
CONC	CONCRETE	SLS	SEE LANDSCAPE DRAWINGS
DI	DROP INLET	SLV	SLEEVE
DW	DRIVEWAY	SO	SIDE OPENING
E	ELECTRIC	SS	SANITARY SEWER
EM	ELECTRIC METER	SSCO	SANITARY SEWER CLEAN OUT
EP	EDGE OF PAVEMENT	SSMH	SANITARY SEWER MANHOLE
ESMT	EASEMENT	TB	TOP OF BOX
EX	EXISTING	TC	TOP FACE OF CURB
FL	SURFACE FLOWLINE	TEL	TELECOMMUNICATION LINE
GB	GRADE BREAK	TG	TOP OF GRATE
GI	GRATE INLET	TS	TRAFFIC SIGNAL
GM	GAS METER	TV	TELEVISION
INV	BOTTOM INSIDE OF PIPE	TW	TOP OF WALL
MAX	MAXIMUM	TYP	TYPICAL
MB	MAILBOX	UB	UTILITY BOX
MH	MANHOLE	UT	UNDERGROUND UTILITY LINE
MIN	MINIMUM	W	WATER
		WM	WATER METER

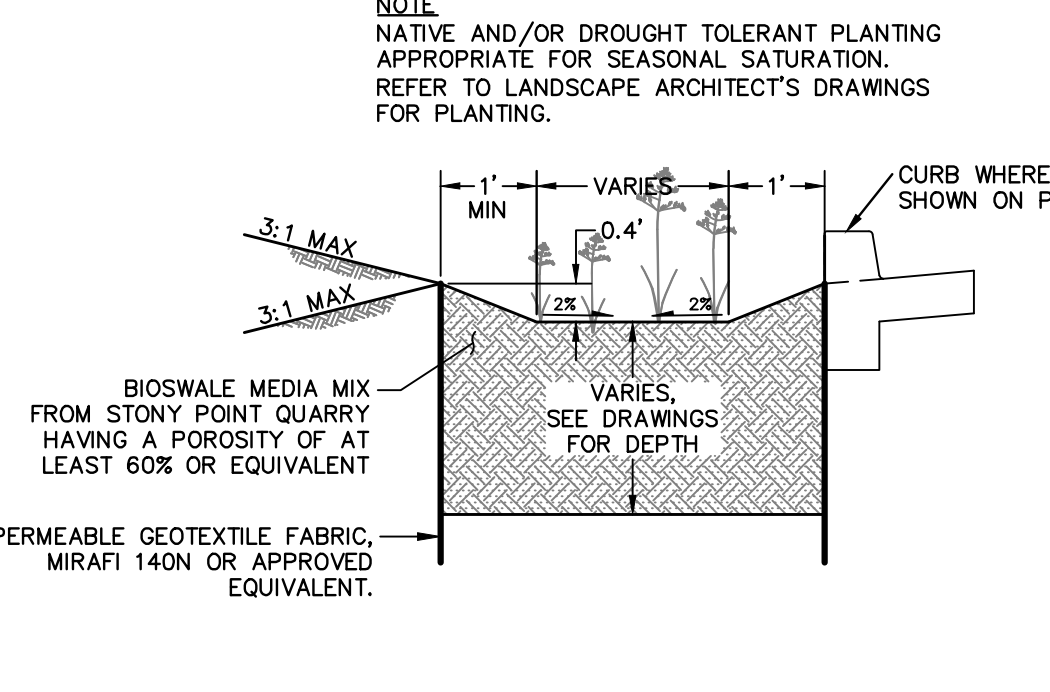
CURB & GUTTER DETAIL



CURB DEPRESSION DETAIL



VEGETATED SWALE AND BIORETENTION AREA DETAIL



FLUSH CURB

