

QUICK PICK MARKET & DELI

201 W 7th St, Santa Rosa, CA 95401

Pacific
SIGNS & LIGHTING

**860 Piner Road #19
Santa Rosa, Ca.
95403**

**Phone: (707)-579-5488
Fax: (707)-579-8390
*Lic# 874463***

20'-6"

14"

QUICK PICK MARKET & DELI

Primary store frontage 31'-6" . Square ft. of signs allowed= 31.6 sq.ft.

Projecting Sign to be removed



QUICK PICK MARKET & DELI

201 W 7th St, Santa Rosa, CA 95401

Property Owner
Approval

Signed

I hereby approve of all
specifications on this
drawing

Date

These drawings are for the sole use
of Pacific Signs & Lighting. Any
unauthorized distribution of drawings
will result in drawing fees @ \$65.
per hour.

Pacific
SIGNS & LIGHTING

860 Piner Road #19
Santa Rosa, Ca.
95403

Phone: (707)-379-5488
Fax: (707)-379-8390
Lic# 874463

20'-6"

14"

QUICK PICK MARKET & DELI

Secondary store frontage 83'-6" . Square ft. of signs allowed=41.7 sq.ft.

Projecting Sign to be removed



12'-0"
above grade

QUICK PICK MARKET & DELI

201 W 7th St, Santa Rosa, CA 95401

Property Owner
Approval

Signed

I hereby approve of all
specifications on this
drawing

Date

These drawings are for the sole use
of Pacific Signs & Lighting. Any
unauthorized distribution of drawings
will result in drawing fees @ \$65.
per hour.

Pacific
SIGNS & LIGHTING

860 Piner Road #19
Santa Rosa, Ca.
95403

Phone: (707)-379-5488
Fax: (707)-379-8390
Lic# 874463

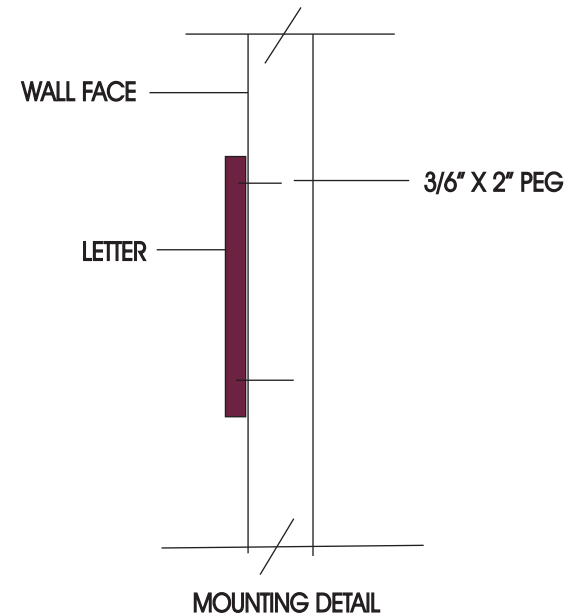
20'-6"

14"

QUICK PICK MARKET & DELI

23.33 Sq. Ft.

Non-illuminated letters
1/2" thick Red plex letters.
Mounted on wall with 3/16" studs



QUICK PICK MARKET & DELI

201 W 7th St, Santa Rosa, CA 95401

Property Owner
Approval

I hereby approve of all
specifications on this
drawing

Signed _____

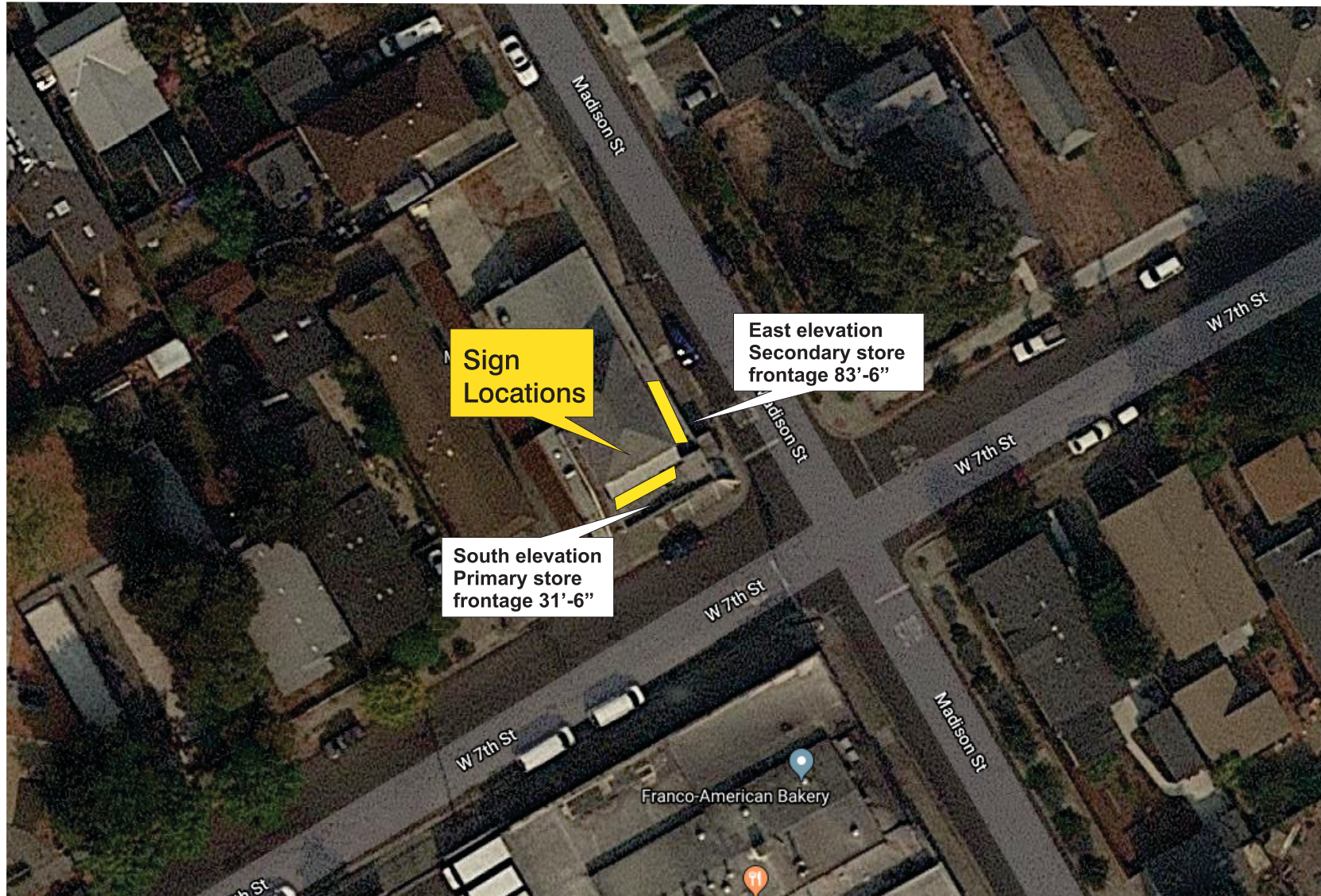
Date _____

These drawings are for the sole use
of Pacific Signs & Lighting. Any
unauthorized distribution of drawings
will result in drawing fees @ \$65.
per hour.

Pacific
SIGNS & LIGHTING

860 Piner Road #19
Santa Rosa, Ca.
95403

Phone: (707)-579-5488
Fax: (707)-579-8390
Lic# 874463



QUICK PICK MARKET & DELI

201 W 7th St, Santa Rosa, CA 95401

Property Owner
Approval

Signed

I hereby approve of all
specifications on this
drawing

Date

These drawings are for the sole use
of Pacific Signs & Lighting. Any
unauthorized distribution of drawings
will result in drawing fees @ \$65.
per hour.

Pacific
SIGNS & LIGHTING

860 Piner Road #19
Santa Rosa, Ca.
95403

Phone: (707)-579-5488
Fax: (707)-579-8390
Lic# 874463

Building across the street, with FCO Letters 1" PVC

North Elevation



East Elevation



QUICK PICK MARKET & DELI

201 W 7th St, Santa Rosa, CA 95401

Property Owner
Approval

Signed

I hereby approve of all
specifications on this
drawing

Date

These drawings are for the sole use
of Pacific Signs & Lighting. Any
unauthorized distribution of drawings
will result in drawing fees @ \$65.
per hour.

Pacific
SIGNS & LIGHTING

860 Piner Road #19
Santa Rosa, Ca.
95403

Phone: (707)-579-5488
Fax: (707)-579-8390
Lic# 874463