

UPDATE:

Water Quality Advisory

ISSUED FOR 13 HOMES IN
FOUNTAINGROVE ON
NOVEMBER 10TH 2017.



OUR FUTURE IN EVERY DRÖP

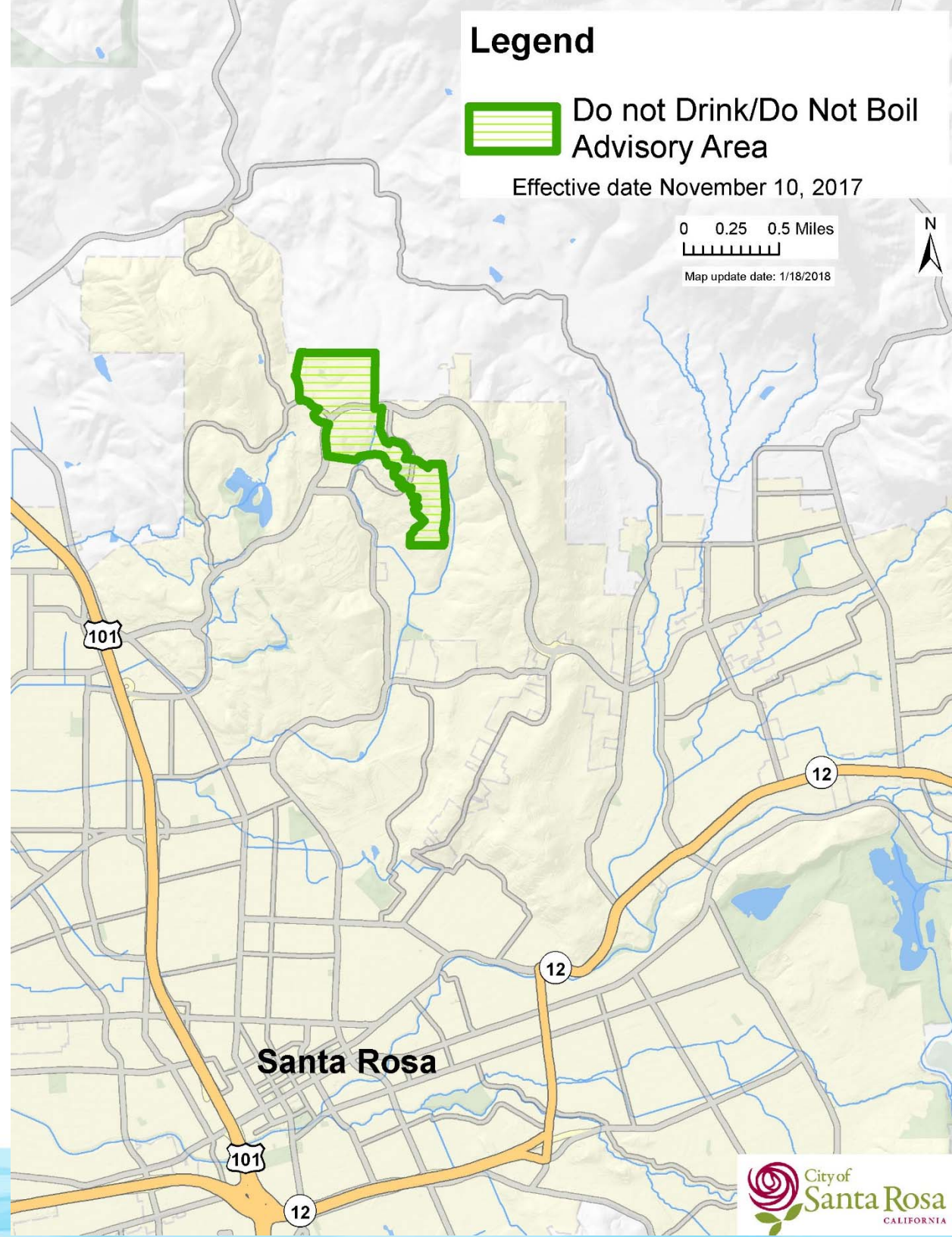
Post-fire Water Quality Sampling

- Routine water sampling prior to re-entry in November.
- Investigated odor/taste complaint Nov.8
- Expanded sampling City-wide to include volatile organic compounds (not normally found in our water).
- Additional tests detected the chemical benzene and action was taken to isolate the contaminated area from the rest of the City.

Water Quality Advisory Issued for Fountaingrove Area



OUR FUTURE IN EVERY DROP



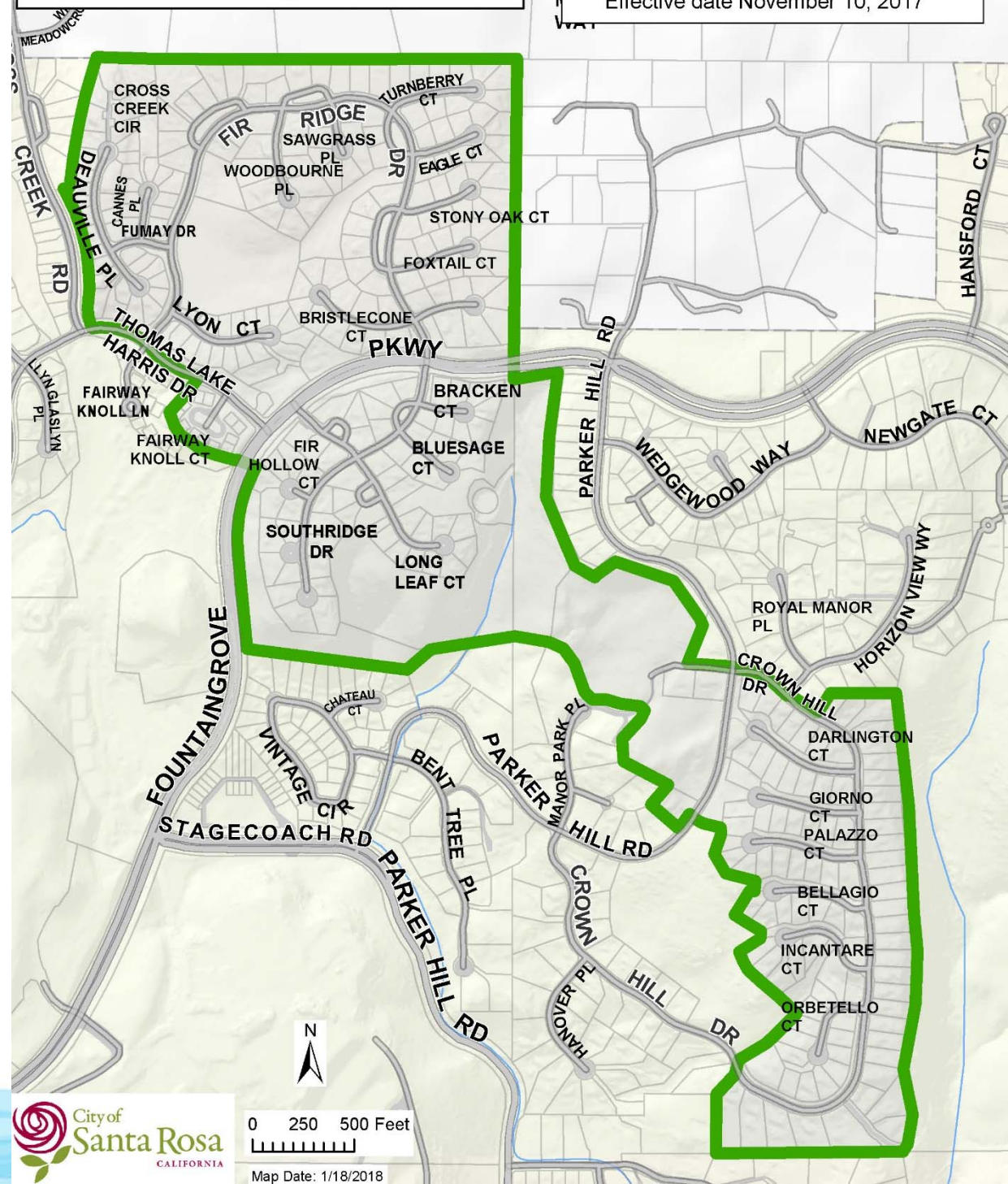
Water Quality Advisory Issued for Fountaingrove Area

**Fountaingrove Do Not Drink
and Do Not Boil
Advisory Area**

Legend

 Do Not Drink / Do Not Boil
Advisory Area

Effective date November 10, 2017



OUR FUTURE IN EVERY DROP



0 250 500 Feet



Map Date: 1/18/2018

Do-Not-Drink and Do-Not-Boil Advisory Notification

Issued November 10, 2017

- In-Person
- Door Tags
- News Release
- Online
- Social Media



Do-Not-Drink and Do-Not-Boil Water Advisory Issued for Two Specific Areas of Fountaingrove

Posted on November 10, 2017

The City of Santa Rosa Water Department has issued notices to customers in select areas advising them to stop drinking tap water due to recent damage to the water system resulting from the fires.

A total of 13 homes in Fountaingrove received the advisory notice after slightly elevated levels of contaminants were detected in two isolated areas. The Department advised residents in these areas to not use the tap water for drinking and cooking until further notice.

Since the wildfires, the Water Department has increased water sampling beyond required regulations to closely monitor the integrity of the water system and ensure high-quality drinking water for residents. The enhanced sampling identified the contamination, and confirmed that the contamination is isolated to two specific areas of Fountaingrove only. To address the contaminations, Santa Rosa Water is flushing clean water through the system.

Those in the impacted area received the following recommendations:

- Do not drink your tap water – use only bottled water. Bottled water should be used for drinking (including baby formula and juice), brushing teeth, washing dishes, food preparation until further notice.
- Do not try and treat the water yourself. Because of the nature of the water, boiling or disinfecting your water will not make it safe to drink.

When the advisory is lifted, properties in the affected areas will be individually notified via media notification will also be issued.

11-10-17 Press Release – Do-Not-Drink and Do-Not-Boil Water Advisory Is Issued for Two Specific Areas of Fountaingrove

Recent news

[Governor's Budget Allocates Funds for County and City Budget Shortfalls from Wildfires](#)

Posted on January 11, 2018

[Public Service Announcement: Contractor and Construction Fraud](#)

Posted on January 10, 2018



OUR FUTURE IN EVERY DROP

**FOUNTAINGROVE
DO NOT DRINK
ADVISORY**



Benzene Detection

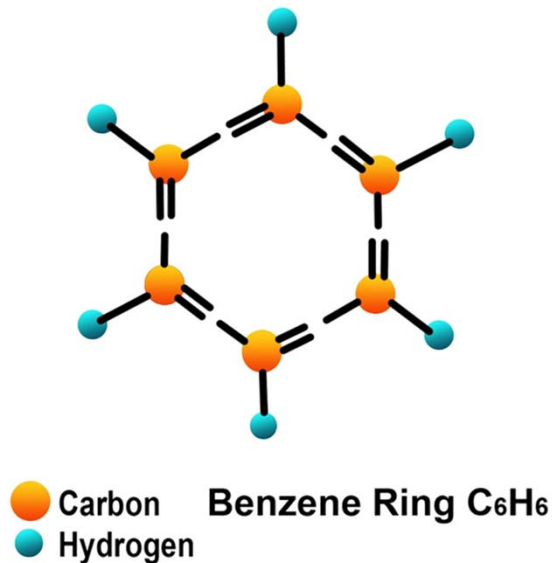
- Some water samples in the advisory area exceeded the California Division of Drinking Water's maximum contaminant level (MCL) for benzene, which is 1.0 ppb.
- One sample outside the advisory area initially detected an elevated level of benzene and after immediate flushing returned to non-detect
 - No homes in this area
 - Multiple re-testing confirmed no benzene
- Additional testing and re-testing for benzene showed no benzene outside of the advisory area.

Maximum Contaminant Level (MCL)

- The highest level of contamination allowed in drinking water.
- The MCL for benzene is 1.0 part per billion (ppb).

Benzene State Water Resources Control Board Regulatory and Water Quality Levels	California State Maximum Contaminant Level (MCL)
	1.0 ppb

What is Benzene?



Benzene is a volatile organic chemical.

- It is formed through natural processes, such as forest fires.
- It is also found in:
 - crude oil and gasoline
 - plastics, rubber, resins and synthetic fabrics.
 - solvents, paints, dry cleaning, etc.

Health Risks

- Based on current benzene levels there is no immediate risk for short term exposure.
- Minimal risk for long term exposure:
 - Some people who drink water containing benzene well in excess of the maximum contaminant level (MCL) for many years could experience anemia or a decrease in blood platelets, and may have an increased risk of getting cancer. (Source: US EPA)
- Based on a today's sampling results, updated health recommendations have been developed in coordination with Division on Drinking Water.
 - Updated notices are being posted

Health & Safety

- Residents have been advised to and should continue to not consume tap water in the advisory area. This includes:
 - Do not drink, cook, or brush teeth with tap water.
 - Do not let pets consume tap water.
- In addition, residents in the advisory area are advised to:
 - Limit shower time, use lukewarm water, and ventilate the area.
 - Limit use of hot water
 - Use a dishwasher to wash dishes
 - Wash clothing in cold water
 - Do not take baths
 - Do not use hot tubs or swimming pools

Initial Action

- Notified Customers
- Isolated advisory area by securing valves, to ensure contamination did not spread.
- Notified the California Division of Drinking Water
- Developed an action plan in coordination with national experts and California Division of Drinking Water regulators

Ongoing Investigation

Sampling and analyzing data

- Samples range from non-detect to 918 ppb
- A majority of the samples are below the 1.0 ppb MCL
- A few locations are well above the MCL
- The highest detection to date is 918 ppb



OUR FUTURE IN EVERY DROP



Fountaingrove Do Not Drink and Do Not Boil Advisory Area

Legend

- Do Not Drink / Do Not Boil Advisory Area
- Existing home

Benzene Detection

- < 1 ppb
- 1 - 5 ppb
- 5 - 25 ppb
- 25 - 100 ppb
- 100 - 500 ppb
- > 500 ppb

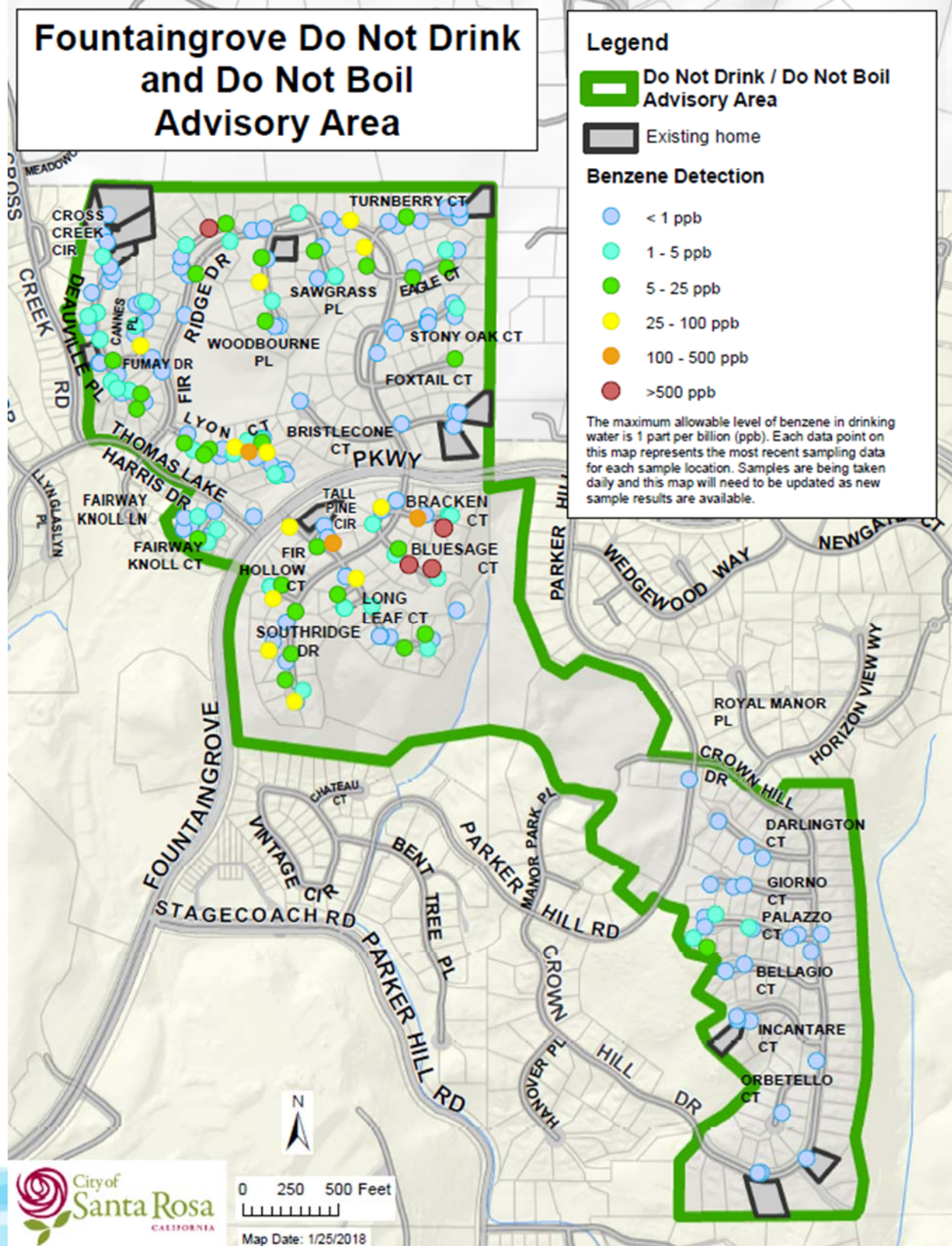
The maximum allowable level of benzene in drinking water is 1 part per billion (ppb). Each data point on this map represents the most recent sampling data for each sample location. Samples are being taken daily and this map will need to be updated as new sample results are available.

City of
Santa Rosa
CALIFORNIA

0 250 500 Feet

Map Date: 1/25/2018

N



Ongoing Investigation

- Continuing extensive sampling throughout the entire water system
- Repeated flushing of the entire water system
- Testing soil and ash samples
- Testing water pipes, services and meters



OUR FUTURE IN EVERY DRÖP



Ongoing Investigation

- Continuing extensive sampling throughout the entire water system
- Repeated flushing of the entire water system
- Testing soil and ash samples
- Testing water pipes, services and meters



OUR FUTURE IN EVERY DRÖP



Ongoing Investigation

- Isolating portions of the system within the advisory area
- Replacing parts of the system and re-testing
 - Removed 25 meters
 - Replaced 8 water services, 2 air relief valves (ARVs), 4 fire hydrants and 2 small segments of water main



OUR FUTURE IN EVERY DROP



Customer Service

- Regular face-to-face interaction with customers
- Updates through door tags and letters
- Providing bottled drinking water
- Adjusting water bills



OUR FUTURE IN EVERY DROP

Next Steps – Restoring Water Quality

- Sampled water service lines at existing homes and replaced service where MCL was exceeded.
- Working with EPA, DDW and national experts on additional strategies



Next Steps – Restoring Water Quality

- Continue to flush, clean, replace, and monitor the water system.
- Performing frequent sampling to monitor progress
- Next steps may include replacing a large portion of the distribution system.



Contact Us with Questions

Visit our website:
srcity.org/WQAdvisory

Water Quality Hotline:
707-543-3965



OUR FUTURE IN EVERY DRÖP