

Santa Rosa Water Fire Recovery Update

**Board of Public Utilities
February 15, 2018**



OUR FUTURE IN EVERY DRÖP

Lift Station Update: Skyfarm A & Hansford Court



Lift Station Update: Skyfarm A



Lift Station Update: Skyfarm A Generator



Lift Station Update: Hansford Court



Lift Station Update: Hansford Court

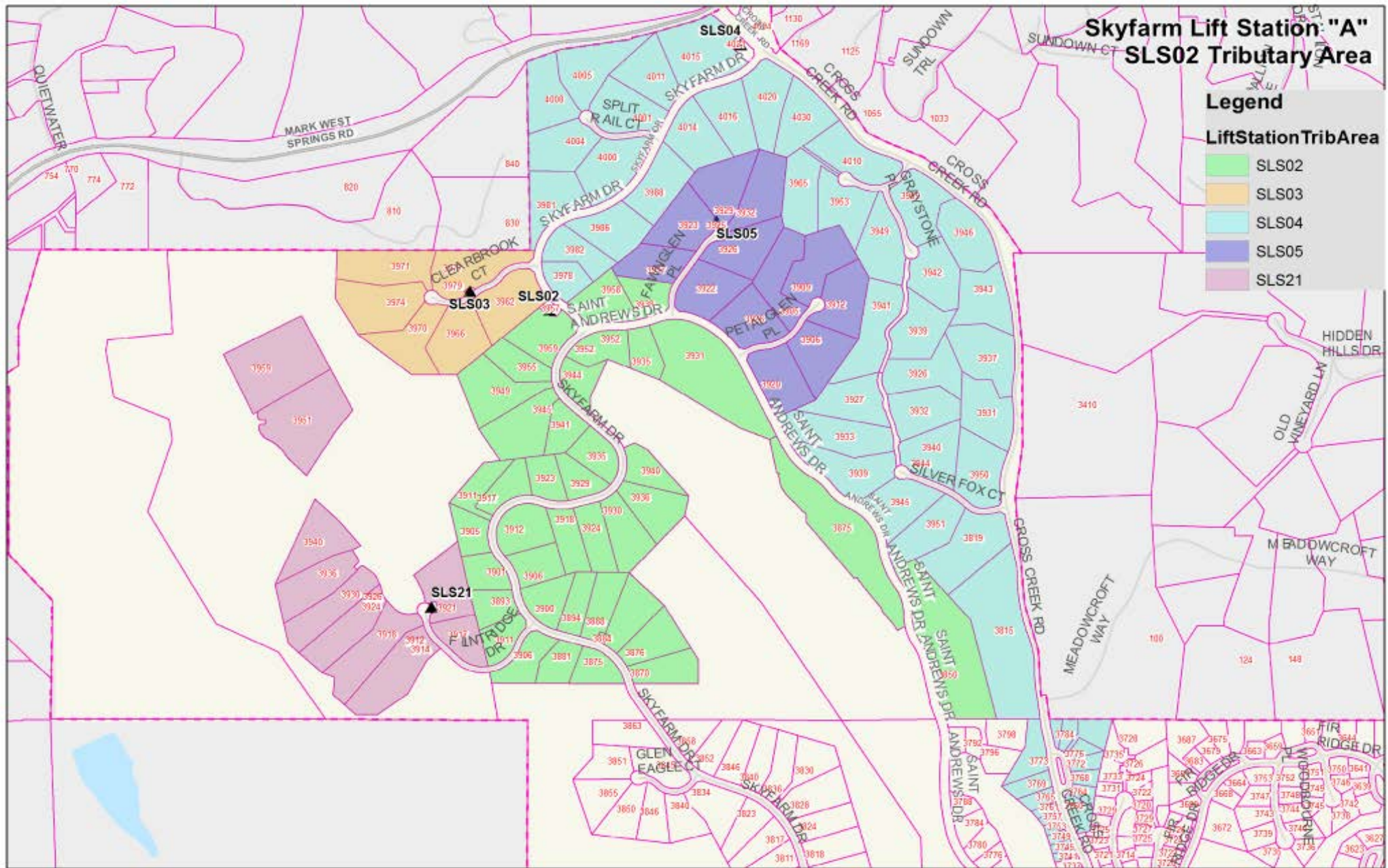


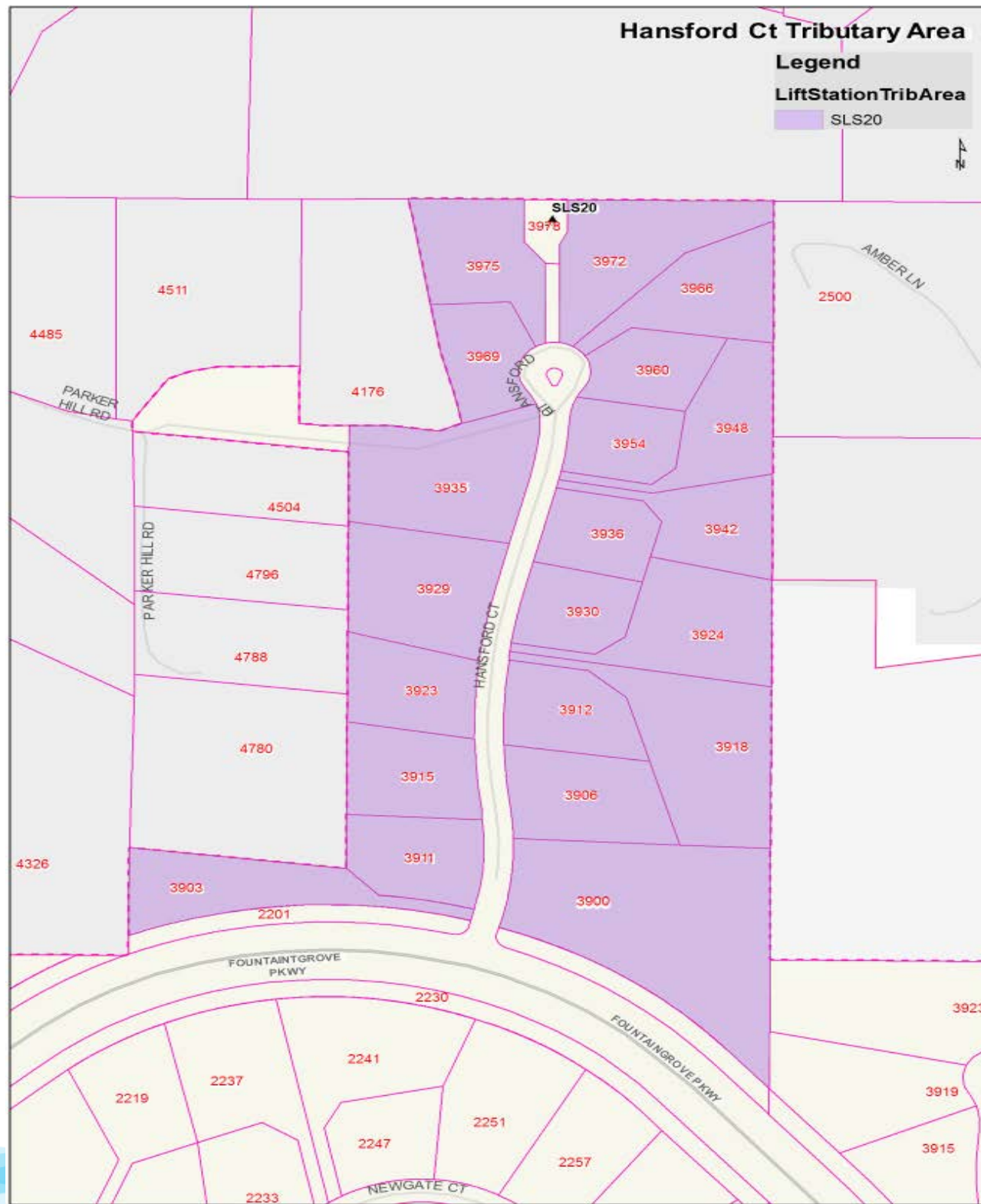
FEMA Public Assistance Program

- City-wide Consultant E&Y
- Damaged asset list to FEMA for reimbursement
- Assets eligible for Hazard Mitigation Grant Program

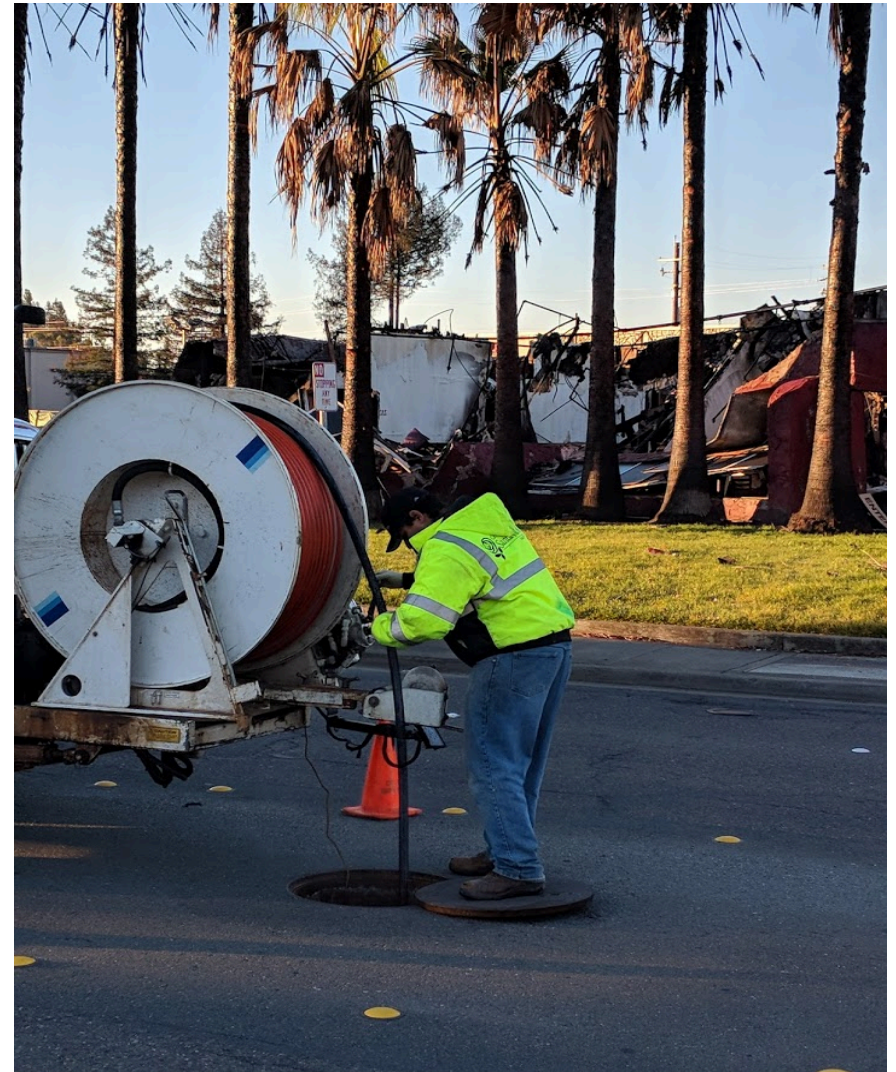
Sewer Lateral Capping







Zone Cleaning in Fountaingrove



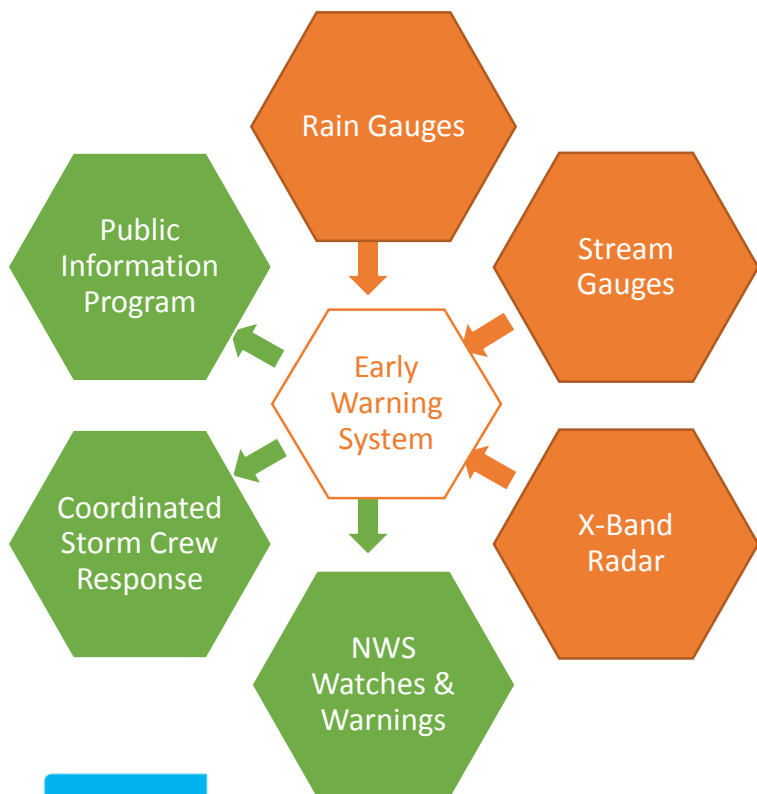
Watershed Recovery Update

- Storm Drain Inlet Protection – Removal & Replacement
- Early Warning System
- Regional Water Board Executive Officer Award

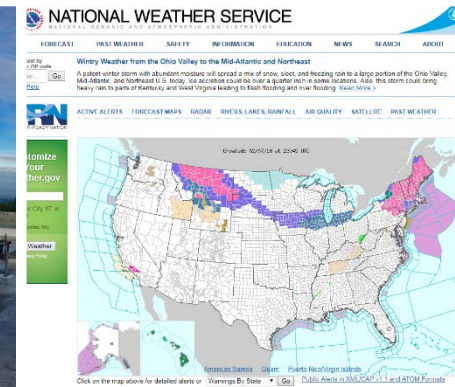
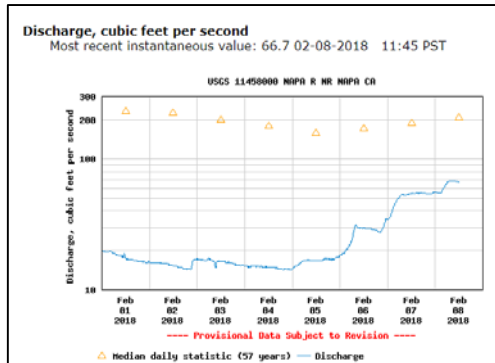


Storm Drain Inlet Protection

Early Warning System



OUR FUTURE IN EVERY DROP





**North Coast Regional Water
Quality Control Board -
Executive Officer's
2017 Water Quality
Stewardship Award**

**Mendocino and Sonoma County
Watershed Task Forces**

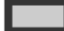


OUR FUTURE IN EVERY DROP

Fountaingrove Do Not Drink and Do Not Boil Advisory Area

Legend

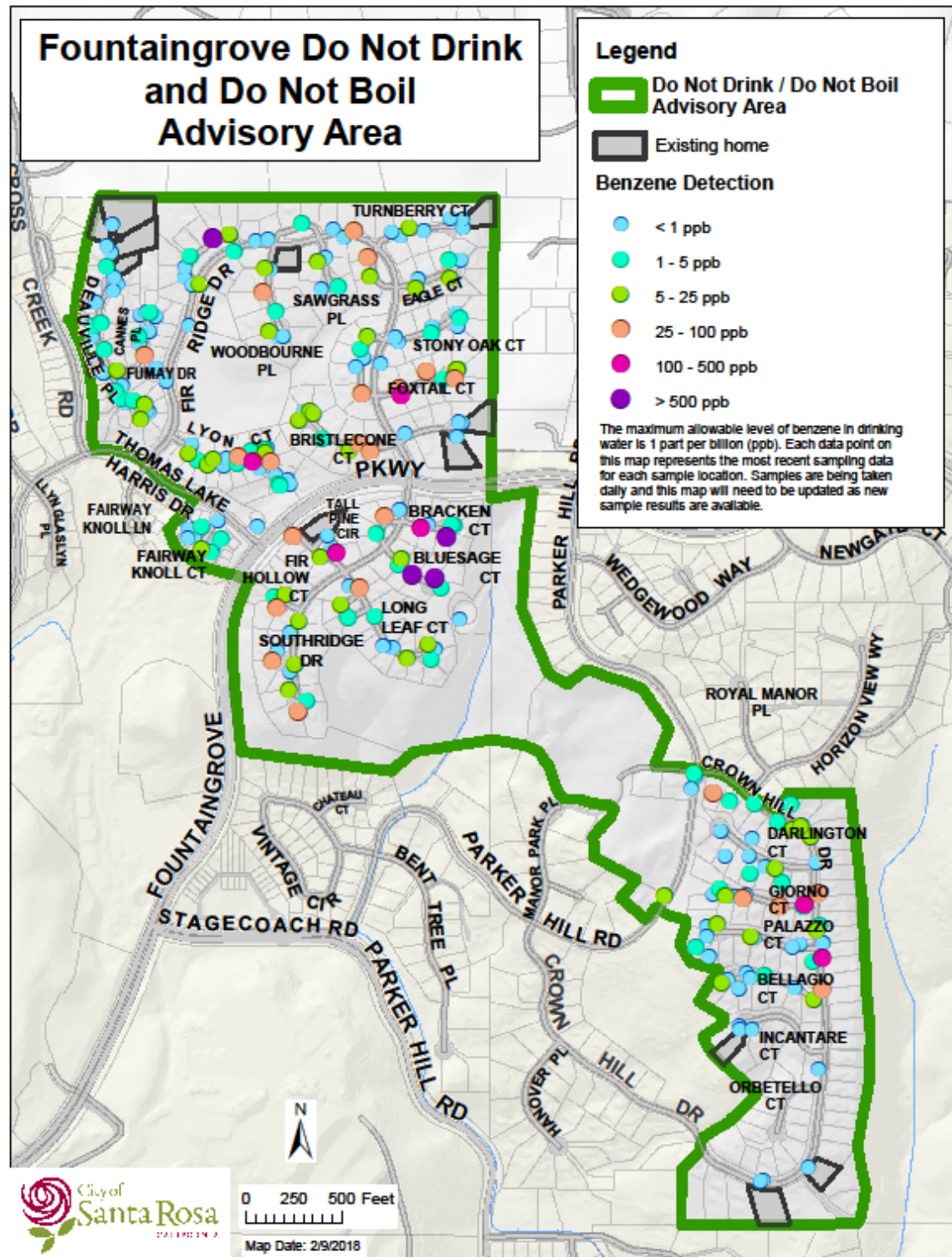
 Do Not Drink / Do Not Boil Advisory Area

 Existing home

Benzene Detection

-  < 1 ppb
-  1 - 5 ppb
-  5 - 25 ppb
-  25 - 100 ppb
-  100 - 500 ppb
-  > 500 ppb

The maximum allowable level of benzene in drinking water is 1 part per billion (ppb). Each data point on this map represents the most recent sampling data for each sample location. Samples are being taken daily and this map will need to be updated as new sample results are available.



Fire Related Revenue Losses

2017/18

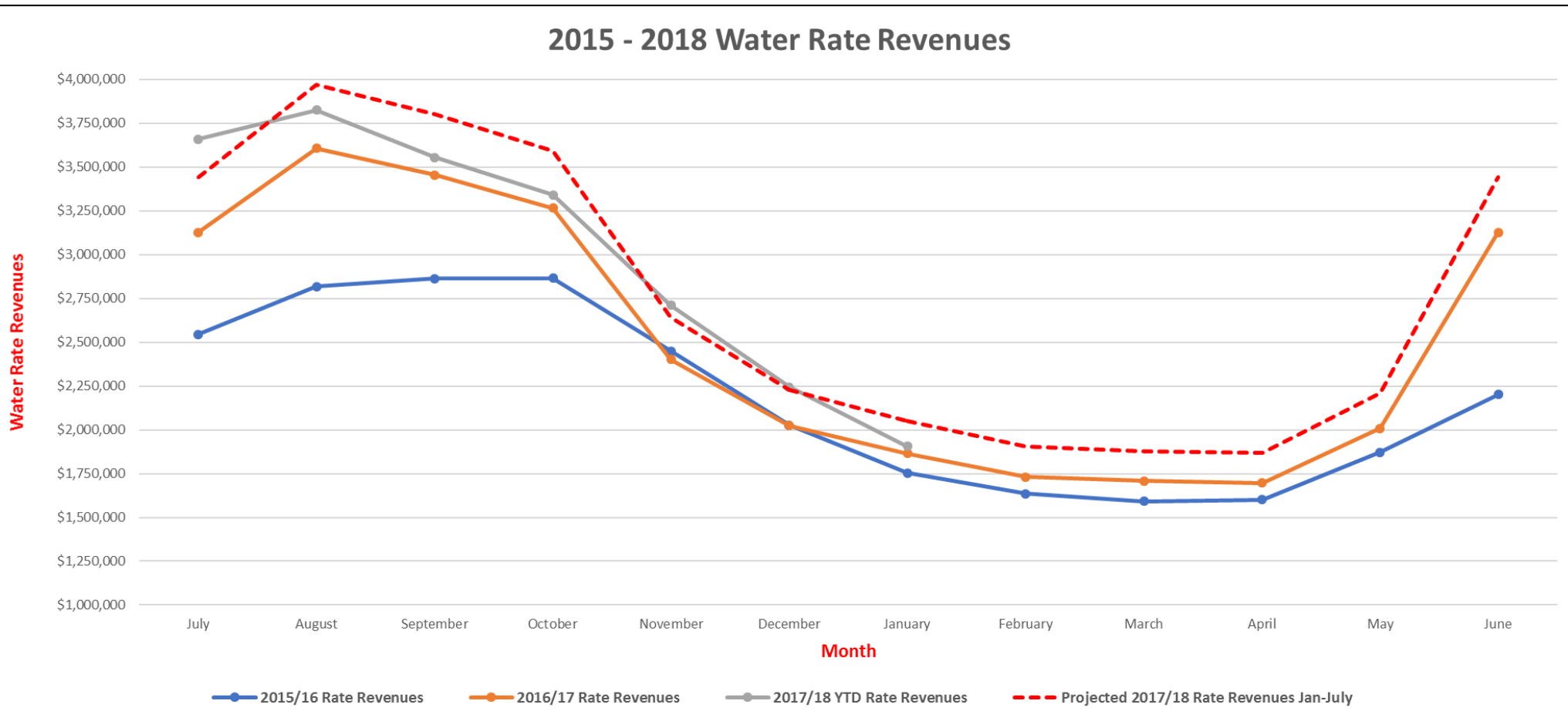
- Projected Revenue Loss
 - Water – \$1.4m (-3%)
 - Sewer – \$1.8m (-2.5%)
- Estimated Based On
 - Actual Charges of Destroyed Properties
 - Based on 16/17 + 3% increase
 - 8 month calculation

Note: 2018/19 projected higher (12 month calculation)

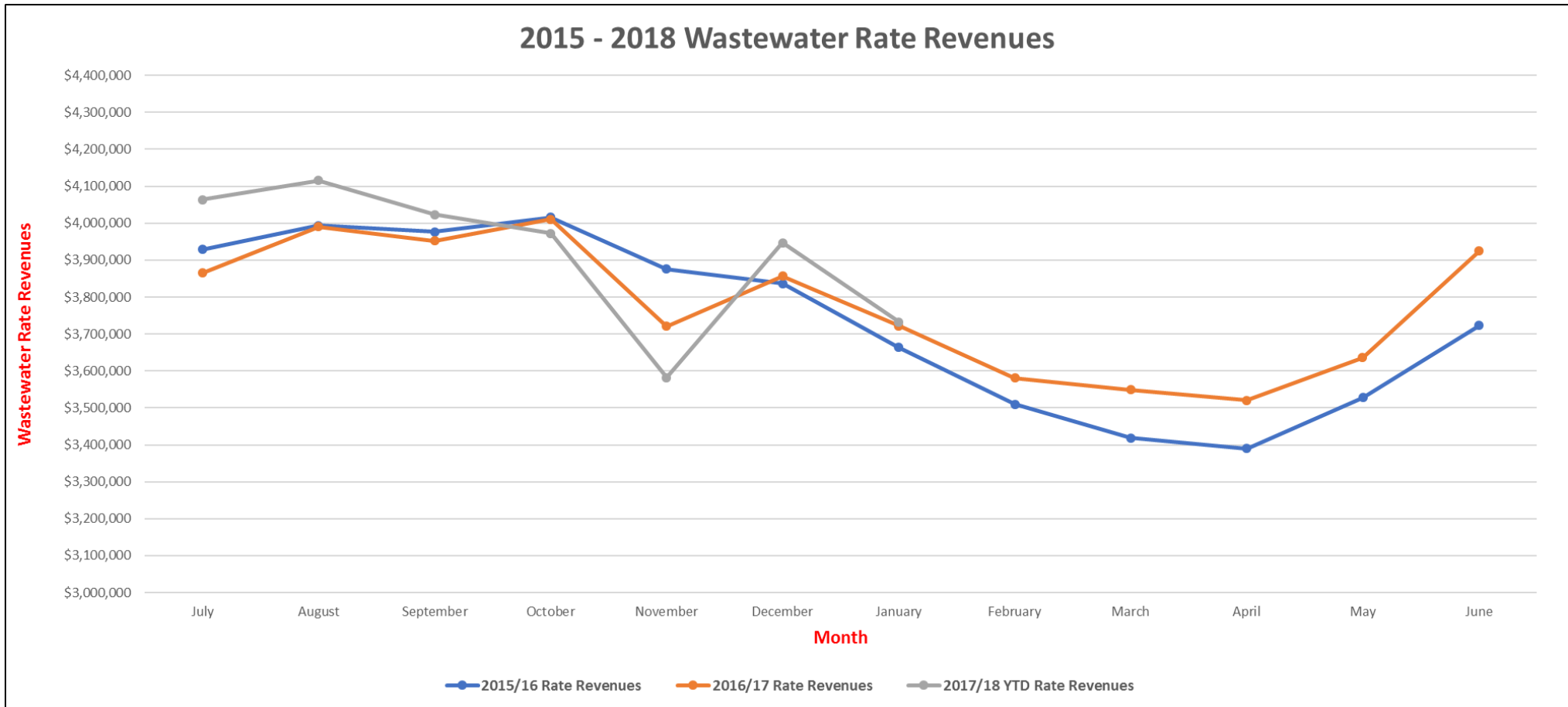
Fire Related Expenses

- Labor and Supplies
 - \$1m
 - Significant portion budgeted
 - Continue to be incurred
- Infrastructure Replacement Costs (preliminary estimate)
 - \$8.3m
- Non Revenue Water – Being evaluated
- Water Main Replacement – Contaminated Area
 - Up to \$20m
- Sewer Lateral Capping
 - Up to \$400k for proposed area

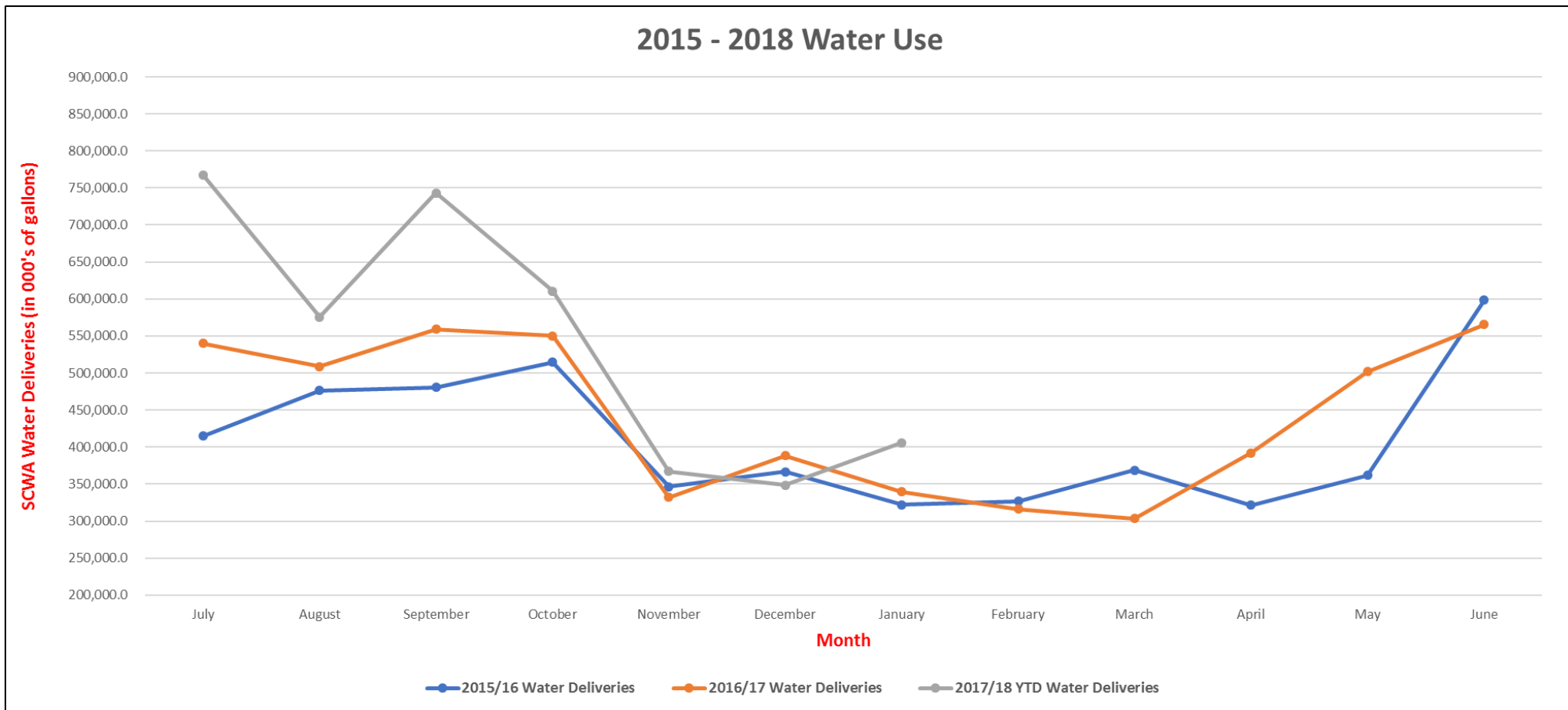
Revenue Trend Water



Revenue Trend Sewer



Water Use



Questions



OUR FUTURE IN EVERY DRÖP