

Somerset Place Tentative Map Time Extension

2786 Dutton Meadow

March 8, 2018

Susie Murray, City Planner
Planning and Economic Development

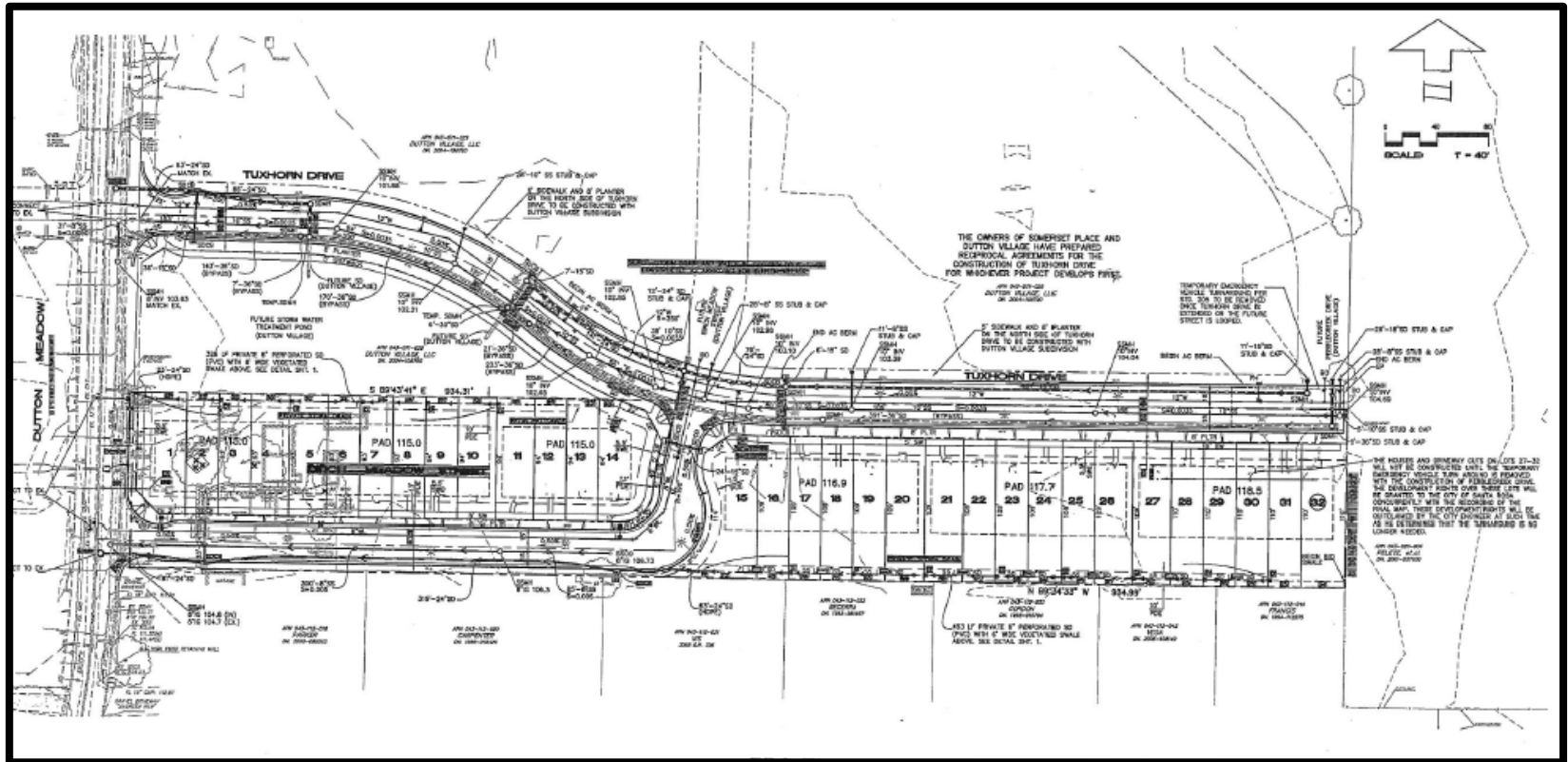
On June 17, 2008, the City Council approved the Somerset Place project on appeal.

- Subdivide 2.69 acres into 32 residential lots
- Construct attached housing
- Mitigated Negative Declaration, Conditional Use Permit and Tentative Map

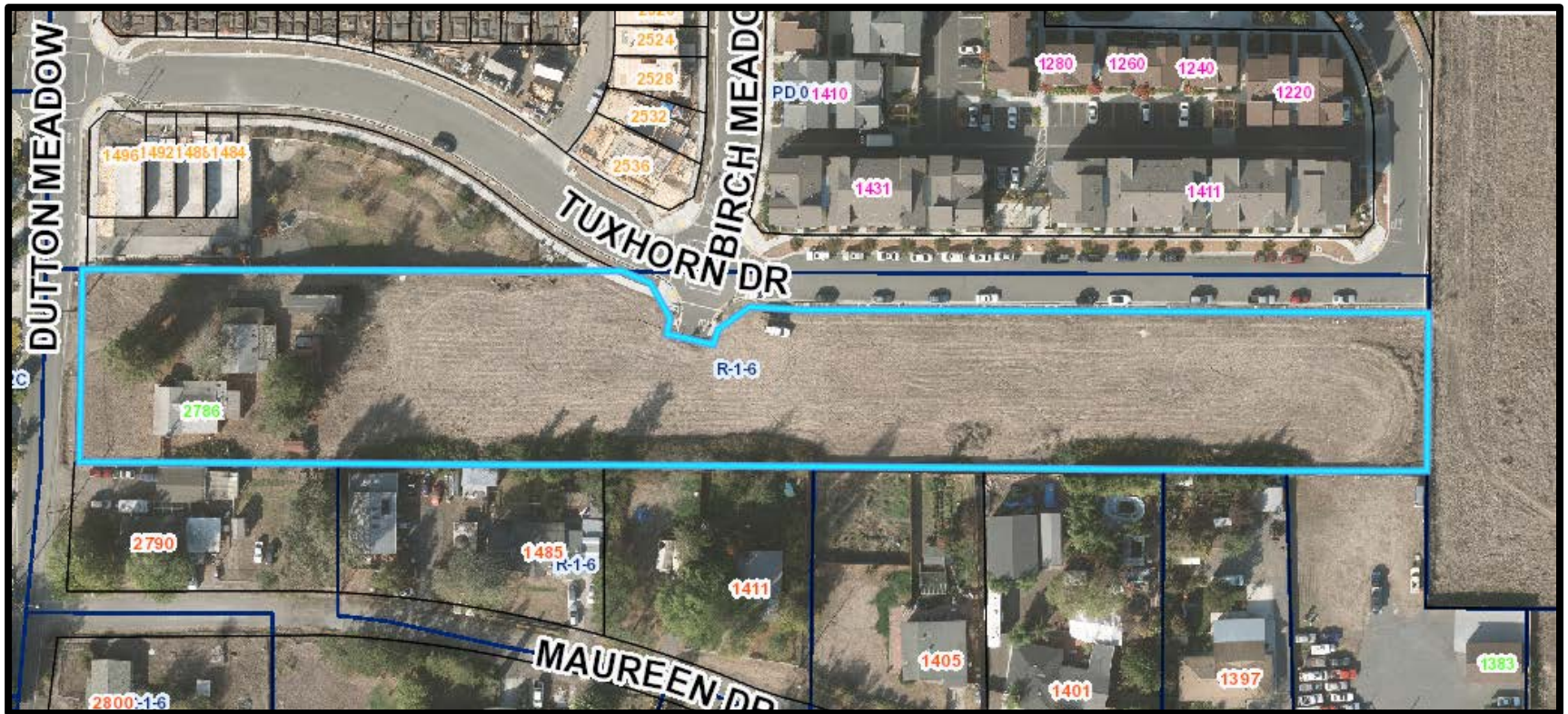
Before the Planning Commission

- Two requests for one-year Time Extension
- Extended expiration to June 17, 2019

Approved Tentative Map



2786 Dutton Meadow – Aerial View



Recommendation

It is recommended by Planning and Economic Development Department that the Planning Commission approve two one-year time extensions for the Somerset Place Tentative Map, extending the expiration date to June 17, 2019.

Susie Murray, City Planner
Planning and Economic Development
smurray@srcity.org
(707) 543-4348

