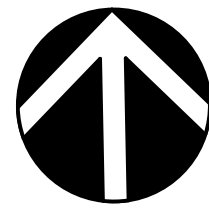
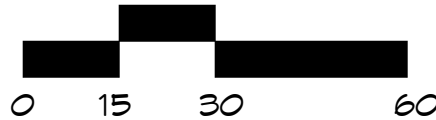


TREE LEGEND

SYMBOL	SIZE	BOTANICAL NAME	COMMON NAME	REMARKS	WATER USE PER WUCOLS IV
TREES					
APE	24	ACER PALMATUM 'EMPEROR RED'	RED JAPANESE MAPLE	MULTI-TRUNK	M
ARA	24	ACER RUBRUM 'ARMSTRONG'	SCARLET MAPLE		M
CRP	24	COTINUS COGGYGRIA 'ROYAL PURPLE'	SMOKE TREE	MULTI- TRUNK	L
LIA	24	LAGERSTROEMIA x FAURIEI 'ARAPAHO'	CRAPE MYRTLE		L
OSH	24	OLEA EUROPAEA 'SWAN HILL'	FRUITLESS OLIVE	MULTI-TRUNK; SPECIMEN TREE	VL
PCK	24	PISTACIA CHINENSIS 'KEITH DAVEY'	CHINESE PISTACHE		L
QAG	24/36	QUERCUS AGRIFOLIA	COAST LIVE OAK	CALIFORNIA NATIVE	VL
QLO	24	QUERCUS LOBATA	VALLEY OAK	CALIFORNIA NATIVE	L

REFER TO SHEET L-1.2 FOR SHRUB AND
GROUNDCOVER PLANTING AND IRRIGATION
CONCEPT AND ESTIMATED WATER USE

PRELIMINARY TREE
PLANTING PLAN



DATE: 1/10/18
JOB: 2017-08
SCALE: 1" = 30'
DRAWN: DM

L-1.1
SHEET 1 OF 2

2017 MACNAIR LANDSCAPE ARCHITECTURE
REGISTERED LANDSCAPE ARCHITECT
DONALD S. MACNAIR
No. 28000
Exp. 6-31-18
STATE OF CALIFORNIA

MACNAIR
LANDSCAPE
ARCHITECTURE
POST OFFICE BOX 251
KENA, OREGON 97531
TEL (503) 858-2288
FAX (503) 858-2289
dmacna@macnairlandscape.com

PRELIMINARY TREE
PLANTING PLAN

HAMPTON INN & SUITES
3883 AIRWAY DRIVE
SANTA ROSA, CALIFORNIA

U.S.A NOTE

IT IS THE RESPONSIBILITY OF THE LANDSCAPE CONTRACTOR TO BE FAMILIAR WITH ALL GRADE DIFFERENCES, LOCATION OF WALLS, STRUCTURES, AND UTILITIES. THE IRRIGATION CONTRACTOR SHALL EXERCISE EXTREME CARE, AND BE RESPONSIBLE FOR ANY DAMAGE IN EXCAVATING AND WORKING NEAR UTILITIES. THE LANDSCAPE CONTRACTOR SHALL COORDINATE ALL WORK WITH THE OTHER SUB-CONTRACTORS FOR THE LOCATION OF UTILITIES AND THE INSTALLATION OF PIPE SLEEVES THROUGH WALLS, UNDER ROADWAYS, AND NEAR STRUCTURES. PRIOR TO CONSTRUCTION, CONTACT ALL APPLICABLE AGENCIES AND U.S.A. AT 1-800-642-2444 OR 1-800-227-2600 TO FIELD LOCATE ALL EXISTING UTILITIES.

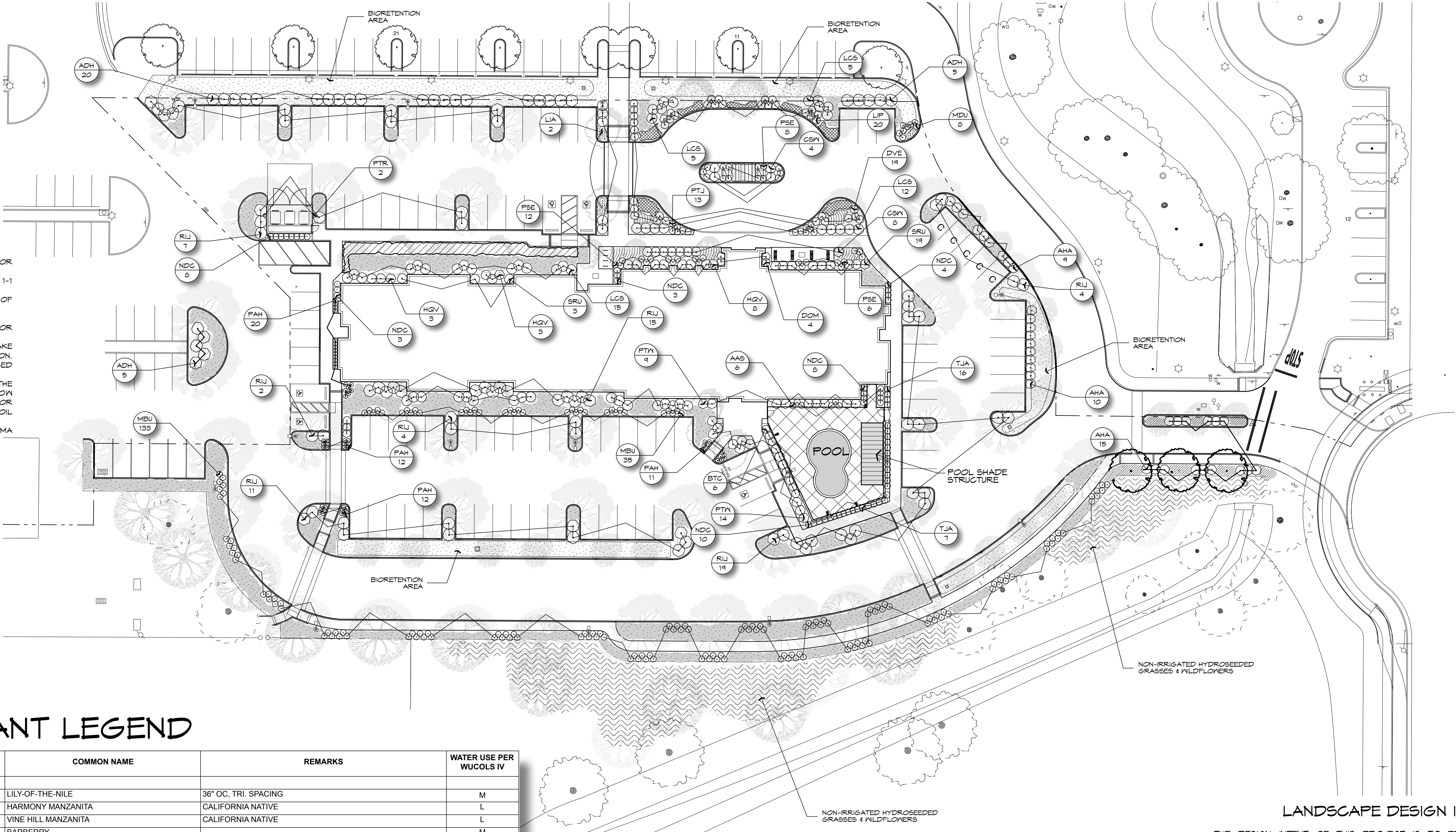
PLANTING NOTES

1. ALL GROUND COVER TO BE SPACED IN A TRIANGULAR PATTERN. CONTRACTOR RESPONSIBLE FOR COMPLETE COVERAGE.
2. SUPPLY AGRIFORM 21 GRAM TABLETS AS FOLLOWS: 5-15 GAL., 3-5 GAL., 1-1 GAL.
3. DIG PLANTING PITS 2 TIMES THE DIAMETER AND EQUAL THE HEIGHT OF ROOTBALL.
4. BACKFILL PITS WITH 2/3 EXISTING SOIL, 1/3 ORGANIC AMENDMENT
5. ALL PLANTS TO BE SPOTTED IN THE FIELD BY LANDSCAPE ARCHITECT PRIOR TO PLANTING.
6. WHEN LANDSCAPING IN EXISTING PLANTED AREAS, CONTRACTOR SHALL TAKE CARE NOT TO DAMAGE OR DESTROY ANY EXISTING PLANT MATERIAL OR IRRIGATION. EXISTING PLANT MATERIAL AND IRRIGATION THAT IS DAMAGED SHALL BE REPLACED WITH LIKE, SIZE, QUALITY, ETC. BY THE CONTRACTOR AT HIS EXPENSE.
7. SPECIAL ATTENTION IS TO BE PAID TO THE PLANTING AREAS SURROUNDING THE BUILDINGS. COMPACTED SOIL IS TO BE SUFFICIENTLY EXCAVATED TO ALLOW FOR PROPER ROOT GROWTH AND DRAINAGE OF ALL AREAS. CHECK SOIL FOR PROPER DRAINAGE PRIOR TO PLANTING. AUGER THROUGH COMPACTED SOIL WHERE NECESSARY. DO NOT PLANT IN THE DRAINAGE SNALES.
8. ALL CONSTRUCTION IS TO BE PER ALL APPLICABLE AND PREVAILING SONOMA COUNTY CONSTRUCTION STANDARDS.

PLANT LEGEND

SYMBOL	SIZE	BOTANICAL NAME	COMMON NAME	REMARKS	WATER USE PER WUCOLS IV
SHRUBS					
AAS	1	AGAPANTHUS AFRICANUS 'STORM CLOUD'	LILY-OF-THE-NILE	36" OC, TRI. SPACING	M
AHA	5	ARCTOSTAPHYLOS D. 'HARMONY'	HARMONY MANZANITA	CALIFORNIA NATIVE	L
ADH	5	ARCTOSTAPHYLOS D. 'HOWARD MCMINN'	VINE HILL MANZANITA	CALIFORNIA NATIVE	L
BTC	5	BERBERIS THUNBERGII 'CRIMSON PYGMY'	BARBERRY		M
CSW	5	CAMELLIA SASANQUA 'WHITE DOVES'	CAMELLIA		M
DOM	5	DAPHNE ODORA 'MARGINATA'	WINTER DAPHNE		L
DVE	5	DIETES VEGETA (AKA MORAEA IRIDOIDES)	FORTNIGHT LILY		L
HGV	5	HYDRANGEA QUERCIFOLIA 'VAUGHN'S LILLIE'	OAKLEAF HYDRANGEA		M
LIP	5	LAVANDULA INTERMEDIA 'PHENOMENAL'	LAVENDER		L
LCS	5	LOROPETALUM CHINENSIS 'SHANG-HI'	DWARF CHINESE FRINGE FLOWER	DWARF SPECIES AKA 'PURPLE DIAMOND'	L
NDC	5	NANDINA DOMESTICA 'COMPACTA'	COMPACT HEAVENLY BAMBOO		L
PTW	5	PITTOSPORUM TOBIRA 'WHEELER'S DWARF'	DWARF MOCK ORANGE	3' O.C. TRI. SPACING	L
PSE	5	POLYSTICUM POLYBLEPHARUM	TASSEL FERN		M
RJ	5	RHAPHIOLEPIS INDICA 'JACK EVANS'	INDIA HAWTHORN		L
SRU	5	SARCOCOCCA RUSCIFOLIA	FRAGRANT SARCOCOCCA		L
GROUND COVER					
TVI	1	COTONEASTER DAMMERI 'CORAL BEAUTY'	COTONEASTER	5' O.C. TRI. SPACING	L
	1	TULBAGNIA VIOLACEA	SOCIETY GARLIC	2' O.C., TRI. SPACING	L
VINES					
PTR	5	PARTHENOCISSUS TRICUSPIDATA	BOSTON IVY		L
TJA	5	TRACHELOSPERMUM JASMINOIDES	STAR JASMINE		M
PERENNIALS					
	1	ERIGERON KARVINSKIANUS	FLEABANE	BLUE	L
	1	GAURA LINDHEIMERI 'SO WHITE'	GAURA		M
	1	LIRIOPE MUSCARI 'SILVERY SUNPROOF'	LILY TURF		M
GRASSES					
	1	CAREX ELATA 'BOWLES GOLDEN'	GOLDEN VARIEGATED SEDGE		M
MDU	1	MUHLENBERGIA DUBIA	PINE MUHLY	36" OC, TRI. SPACING	L
PAH	1	PENNISETUM ALOPECUROIDES 'HAMEIN'	DWARF FOUNTAIN GRASS	36" OC, TRI. SPACING	L
BIOSWALE					
SOD		BIO-FILTER GRASSES	"BIO-FILTRATION SOD"	AS PRODUCED BY DELTA BLUEGRASS (CALIFORNIA NATIVES)	L
OTHER					
		MULCH: FIR BARK, 1/2" MINUS		3" DEPTH; ALL LANDSCAPE AREAS	
SEE DETAIL		LINEAR ROOT BARRIER	ROOT SOLUTIONS, OR EQUAL	24" DEPTH; INSTALL WHERE TREE IS CLOSER THAN 5' TO EDGE	

REFER TO SHEET L-1.1 FOR TREE PLANTING



PRELIMINARY MAWA AND ETWU CALCULATIONS

- 1.) Maximum Applied Water Allowance (MAWA)
- A.) Net Evapotranspiration Calculation
- Annual Eto 43.90
- Annual Rainfall 24.57 X 0.25 = Effective Rainfall 6.1425
- Net Evapotranspiration Calculation= Annual Eto - Effective Rainfall = 37.76
- B.) Adjusted Landscape Area Calculation
- Landscape Area 27,118 X Adjustment Factor 0.45 = 12203.12
- Special Landscape Area 0 X Adjustment Factor 0.4 = 0
- Sum of Adjusted Landscape Area = 12203.12
- MAWA = 37.76 X 0.62 x 12,203.12 = 285,671 Gallons
- 2.) Estimated Total Water Use (ETWU)
- A.) Net Evapotranspiration Calculation
- Net Evapotranspiration Calculation= Very Low Water Plant Use SF
- Annual Eto - Effective Rainfall = 37.76
- Low Water Plant Use SF 0 X 0.10 = 0.00
- Moderate Water Plant Use SF 22,811 X 0.30 = 6843.26
- High Water Plant Use SF 4,316 X 0.60 = 2589.71
- Sum of Adjusted Landscape Area 9432.97
- ETWU= 37.76 X 0.62 X 9,432.97 / 0.81 = 272,620 Gallons

LANDSCAPE DESIGN INTENT

THE DESIGN INTENT OF THIS PROJECT IS TO PROVIDE AN ATTRACTIVE, DURABLE, LOW MAINTENANCE AND LOW WATER CONSUMING LANDSCAPE WHICH EMBRACES THE SONOMA COUNTY AESTHETIC.

PLANTING SHALL INCLUDE A MIXTURE OF HORTICULTURALLY APPROPRIATE SHRUB AND GROUND COVER PLANTINGS. SHRUBS AND GROUND COVER PLANTINGS SHALL CONSIST OF MEDIUM, LOW WATER USE PLANTS (AS DEFINED BY THE 2014 EDITION WUCOLS IV).

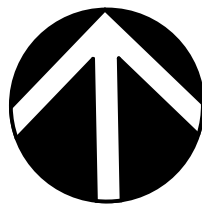
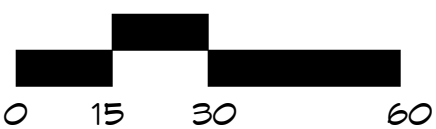
DECIDUOUS, FLOWERING ACCENT TREES ARE PROPOSED TO CREATE INTEREST AND CHARACTER. LARGE DECIDUOUS SHADE SHALL PROVIDE CANOPY SHADE IN THE PARKING LOTS AND PEDESTRIAN OUTDOOR SPACES. BROADLEAF EVERGREEN TREES WILL PROVIDE YEAR ROUND INTEREST AND SCREENING FROM ADJACENT PROPERTIES. LOCALLY NATIVE OAKS WILL BE USED TO INTERFACE THE PROJECT WITH THE ADJACENT CREEK. LAWN IS NOT PLANNED FOR ANY PORTION OF THE LANDSCAPED AREAS. REQUIRED BIOSNALES WILL BE LANDSCAPED WITH A SOD PRODUCT DEVELOPED SPECIFICALLY FOR BIOFILTRATION.

IRRIGATION DESIGN INTENT

ALL LANDSCAPE AREAS SHALL BE IRRIGATED BY AN AUTOMATIC IRRIGATION SYSTEM WITH WEATHER SENSOR OVERRIDE. SENSOR SHALL BE CAPABLE OF CALCULATING EVAPOTRANSPIRATION AND SHALL ADJUST FOR LOCAL WEATHER. THE ENTIRE IRRIGATION SYSTEM SHALL BE ON AN AUTOMATICALLY CONTROLLED SYSTEM WITH SEPARATE PROGRAMS CAPABLE OF IRRIGATING EACH HYDROZONE INDEPENDENTLY.

THE PROPOSED TREE SHALL BE IRRIGATED VIA SEPARATE, DEDICATED BUBBLER CIRCUIT. ALL OTHER LANDSCAPE AREAS SHALL BE IRRIGATED VIA AN IN-LINE DRIP EMITTER IRRIGATION SYSTEM. THE INTENT OF THE LANDSCAPE AND WATER DELIVERY SYSTEMS IS TO MEET ALL ASPECTS OF THE CITY OF SANTA ROSA WATER EFFICIENCY LANDSCAPE ORDINANCE (MELO).

PRELIMINARY PLANTING PLAN



DATE: 1/10/18
JOB: 2017-08
SCALE: 1" = 30'
DRAWN: DM

L-1.2
SHEET 2 OF 2

PRELIMINARY TREE PLANTING PLAN

HAMPTON INN & SUITES
3883 AIRWAY DRIVE
SANTA ROSA, CALIFORNIA

