

Safely Restoring Water Service to the Advisory Area

Update on Post-fire Water Quality Investigation

Board of Public Utilities Meeting
May 24, 2018



OUR FUTURE IN EVERY DRÖP

Overview

- Brief Background
- Update on Investigation
- Pathway to Repair & Rebuilding – A Process
- Next Steps

Understanding the Source

- Melting and burning of plastics
- Smoke, soot, and ash
- Adhered and absorbed into water services and system components and are releasing contamination



Water Quality Sampling Results

- Sample Station
Samples taken at sample stations are representative of drinking water quality supplied to homes and businesses in the area.

Investigative Sampling Results for Benzene

● Below MCL

◆ Above MCL

Water samples taken from water services are for investigative purposes and not representative of water quality in the area. Investigative samples are being used to help in the City's efforts to resolve the issue. Benzene is a regulated chemical with an established California MCL (maximum contaminant level) of 1.0 ppb (part per billion) for drinking water.

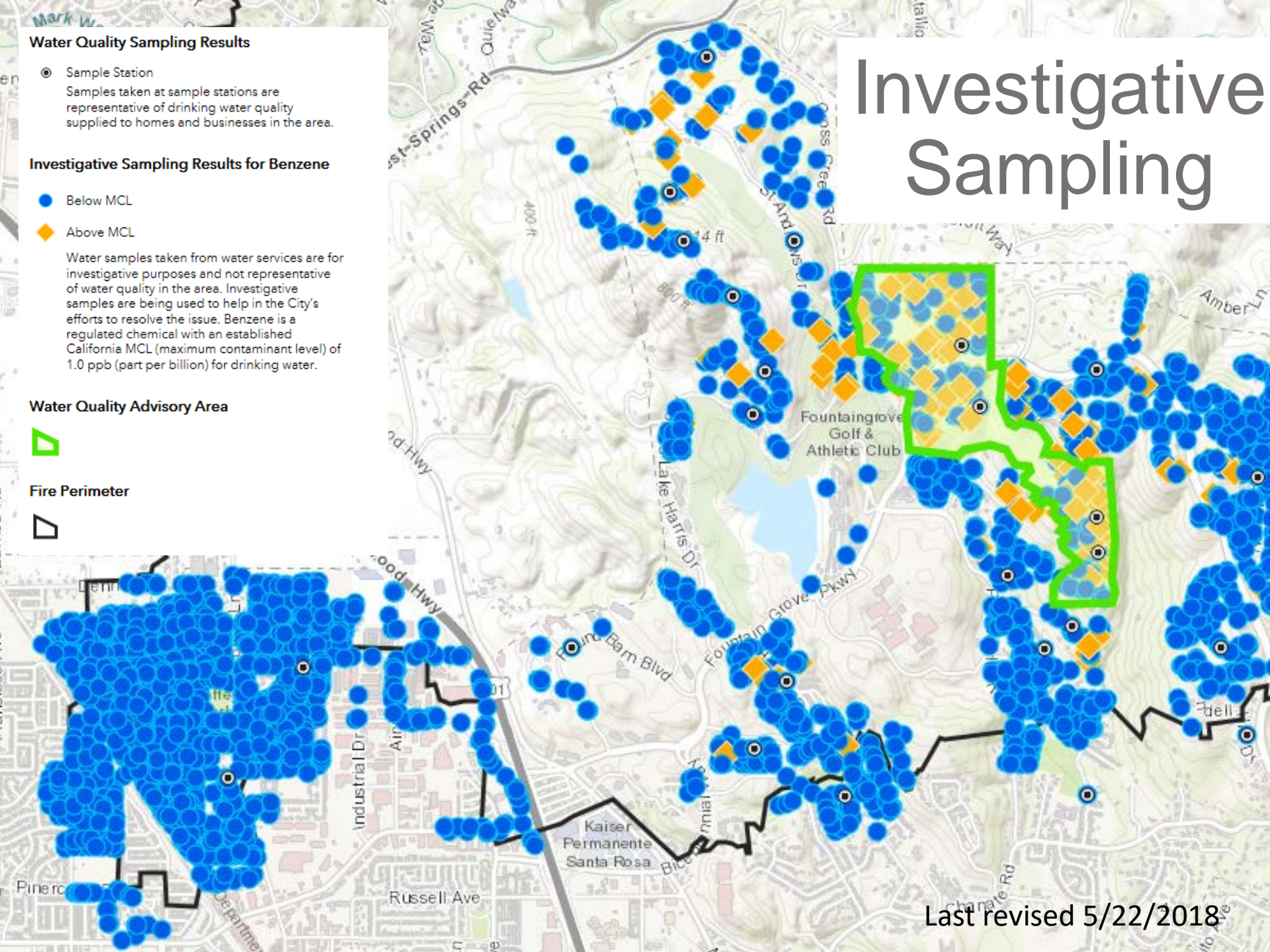
Water Quality Advisory Area



Fire Perimeter



Investigative Sampling



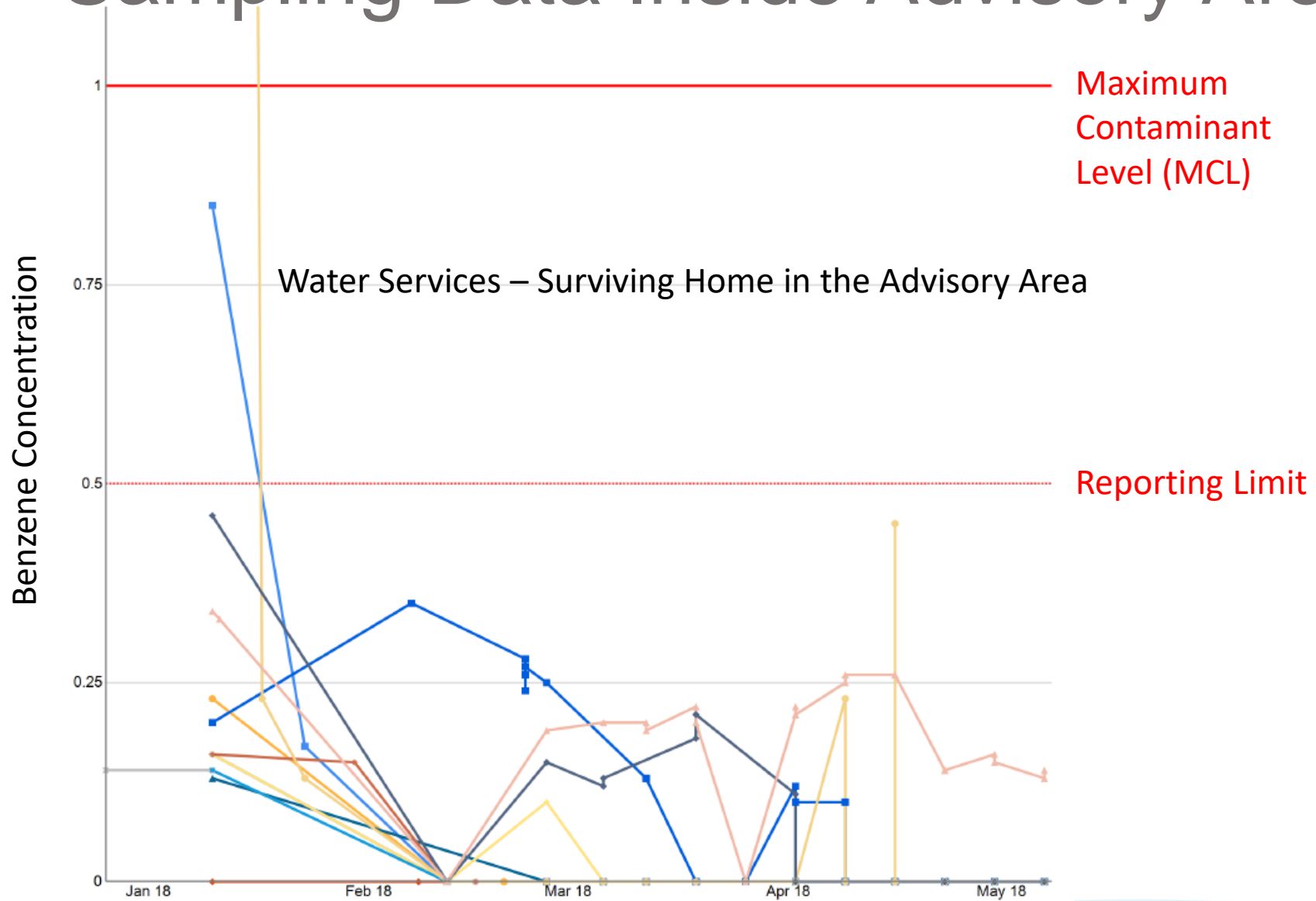
Last revised 5/22/2018

Investigation Showing Promise by Replacing Water Services

- Replacement of water services outside the advisory area has removed contamination
- Outside of the water quality advisory area we see non-detects and meet all drinking water standards

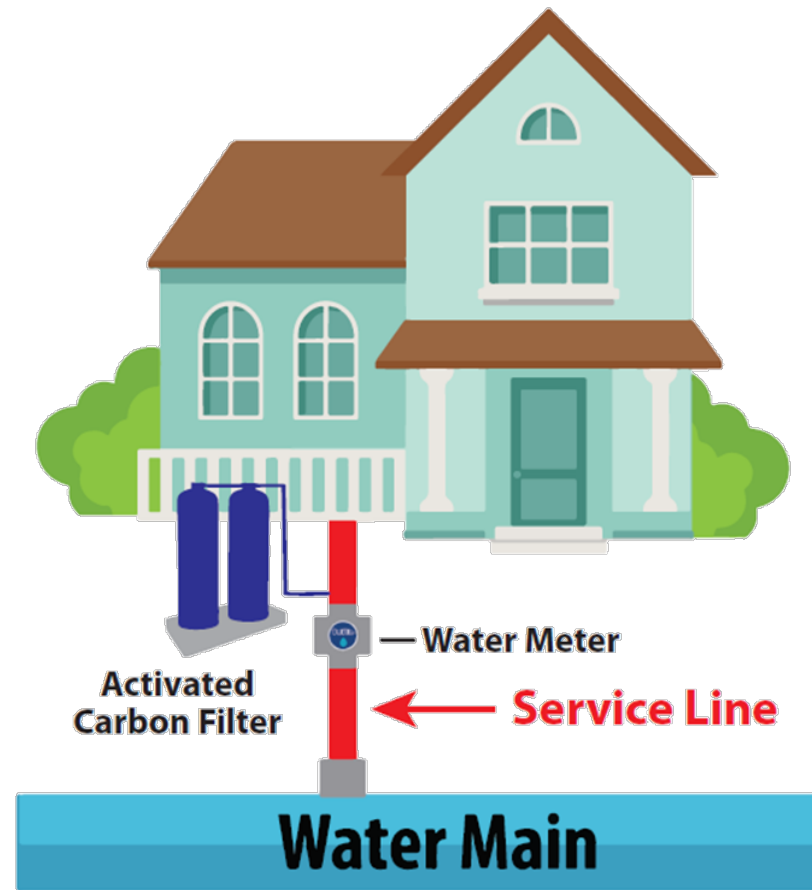


Sampling Data Inside Advisory Area



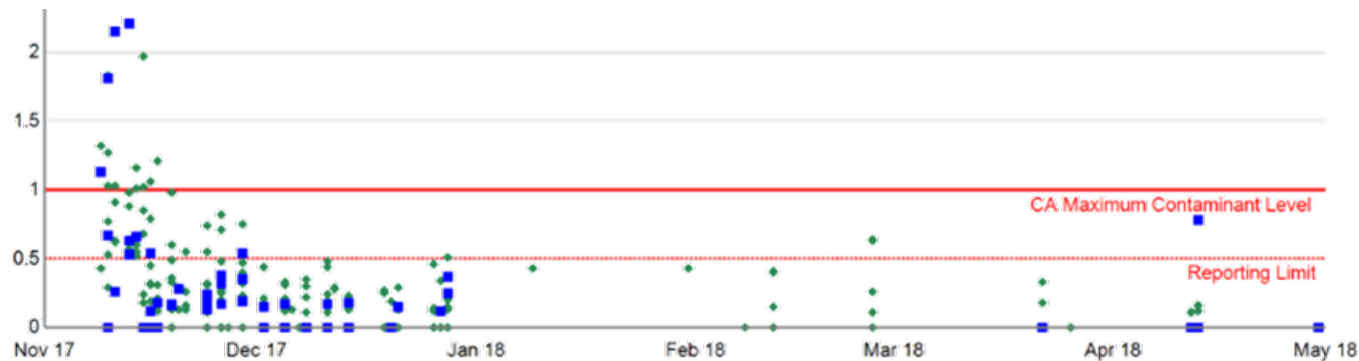
Path Toward Restoring Water Service

- Every water service line will be replaced and re-sampled
- City will install temporary activated carbon water filters, as needed, for occupancy
- Water Quality will be routinely monitored



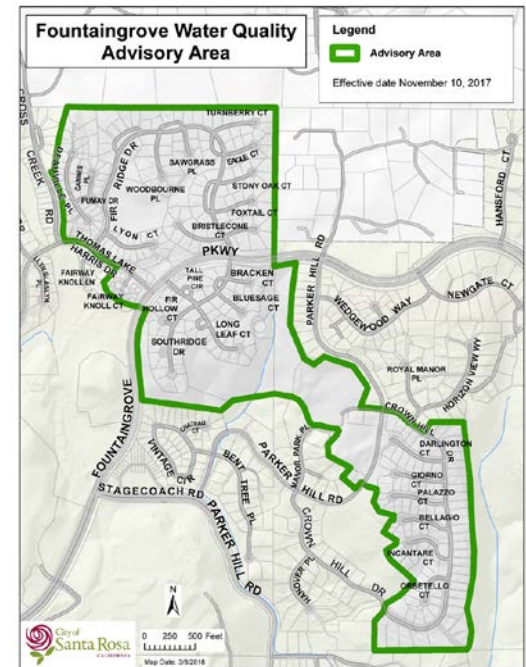
The Data Will Guide Us

- Service line replacement may clear the issue
- We may see issues in isolated areas and look at additional targeted replacement
- If data indicates no improvement, will replace affected portions of the water system.



Restoring Service in the Advisory Area: Phase One

- Targeted replacement of:
 - Service lines to 352 properties
 - 15 blow-off valves
 - Complete by August 2018
- Return water system to “normal operations”
- Flushing and Monitoring
- Evaluating Sampling Data



Funding

- City will fund replacements of water service lines from the main to meter
- City will fund activated carbon water filters – If and where needed
- Continuing to work with FEMA and CAL OES for reimbursement

Meeting Interim Water Needs

- Water for irrigating surviving landscapes
- Water for construction / rebuilding



Next Steps

- Ongoing communication with affected parties
- Continuing monitoring and evaluation supported by national experts
- Expediting construction approach starting with service line replacements
- Data and evaluation will determine next phase if needed
- Continue exploring state & federal funding options

Stay Informed

- srcity.org/WQAdvisory
 - Monitoring Info
 - Updates
- Sonomacountyrecovers.org



Post-fire Water Quality Investigation Updates

Santa Rosa Water is working determinedly to verify the cause and repair our community's water infrastructure that was damaged as result of the October Wildfires.

Latest E-news Updates:

- [April 30, 2018](#) - Reconnecting to Water Service in Fountaingrove Water Quality Advisory Area
- [March 23, 2018](#) - Investigation Results and Special Meeting
- [February 23, 2018](#) - Post-fire Water Quality Investigation

Joint BPU and City Council Meeting Video:

- [March 27, 2018](#)

Fountaingrove Drinking Water Advisory

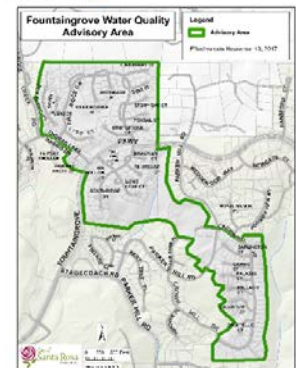
On November 10, 2017, Santa Rosa Water issued a [drinking water advisory](#) for 13 homes in the Fountaingrove area. This advisory went into effect after elevated levels of benzene were detected in the drinking water system. The advisory will remain in place until further notice.

Residents in the advisory area are advised to:

- Do not consume tap water (this includes drinking, cooking, and brushing teeth)
- Do not allow pets to consume tap water
- Limit use of hot water
- Limit shower time (use lukewarm water and ventilate area)
- Use a dishwasher to wash dishes and use air dry setting Wash clothing in cold water
- Do not take baths
- Do not use hot tubs or swimming pools

[FAQs Fountaingrove water quality advisory](#)

[Click to enlarge](#)



Questions?



OUR FUTURE IN EVERY DRÖP