

Depot Park Public Art

Final Artwork Design Options

Art in Public Places Committee

June 4, 2018

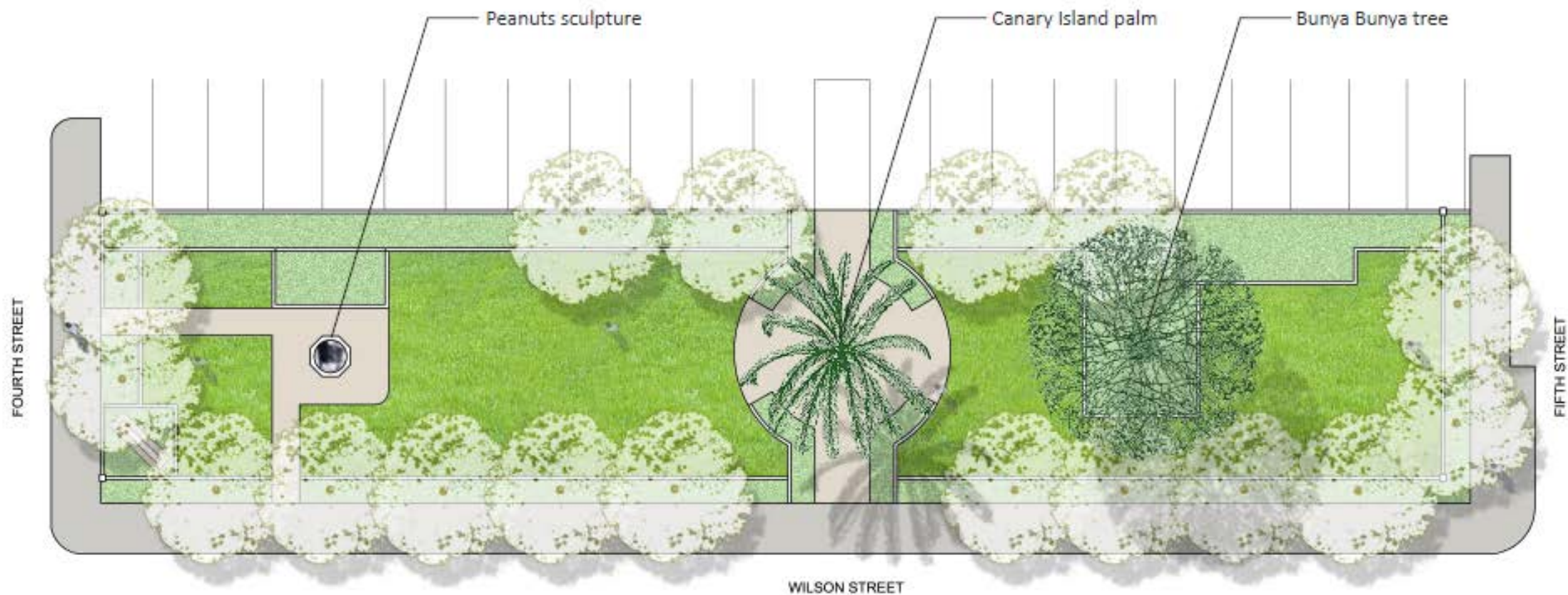
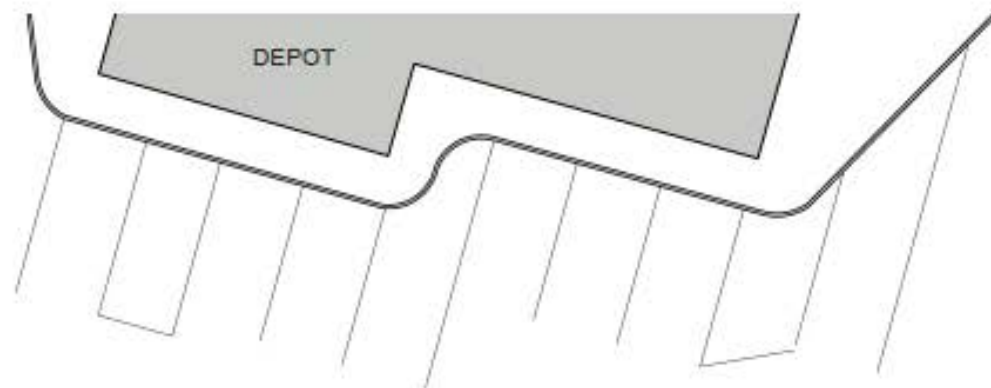
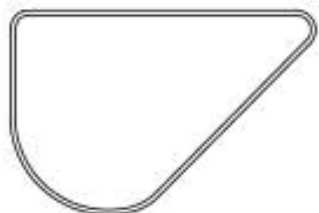
Background

- APPC approved James Dinh as the selected artist
- First phase of artist services agreement is Final Design
- Artist has created two options for the final design

EXISTING SITE PLAN

SCALE: 1" = 16' - 0"

0 16 ft

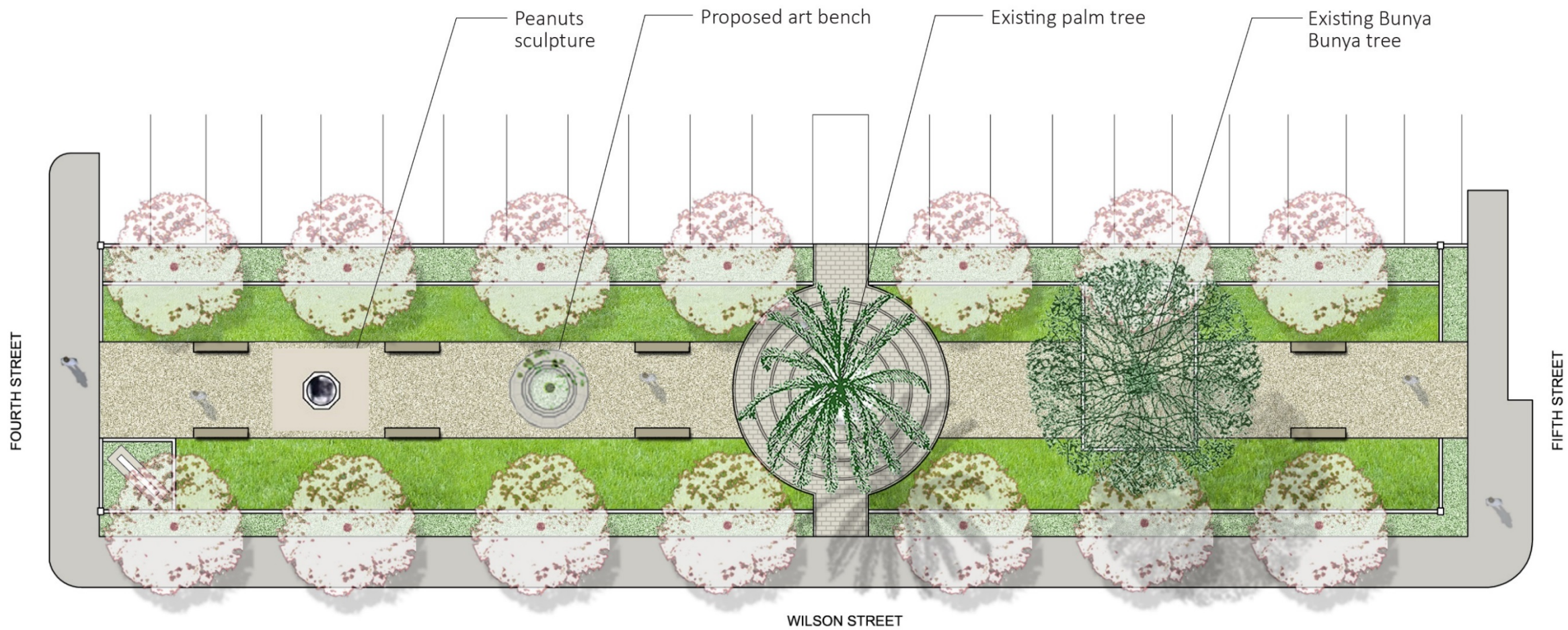
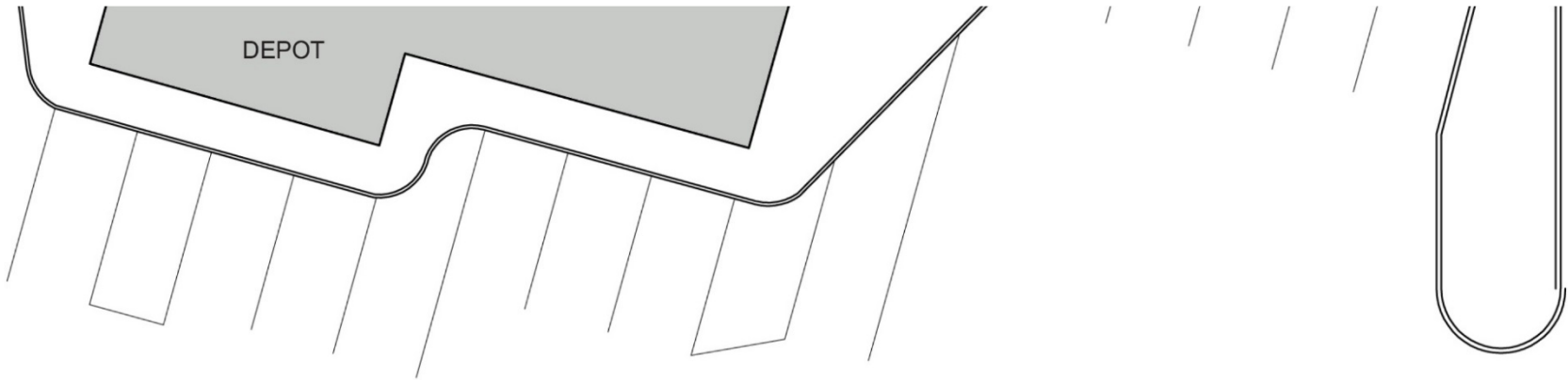


Option 1

SUGGESTED SITE PLAN

SCALE: 1" = 16' - 0"

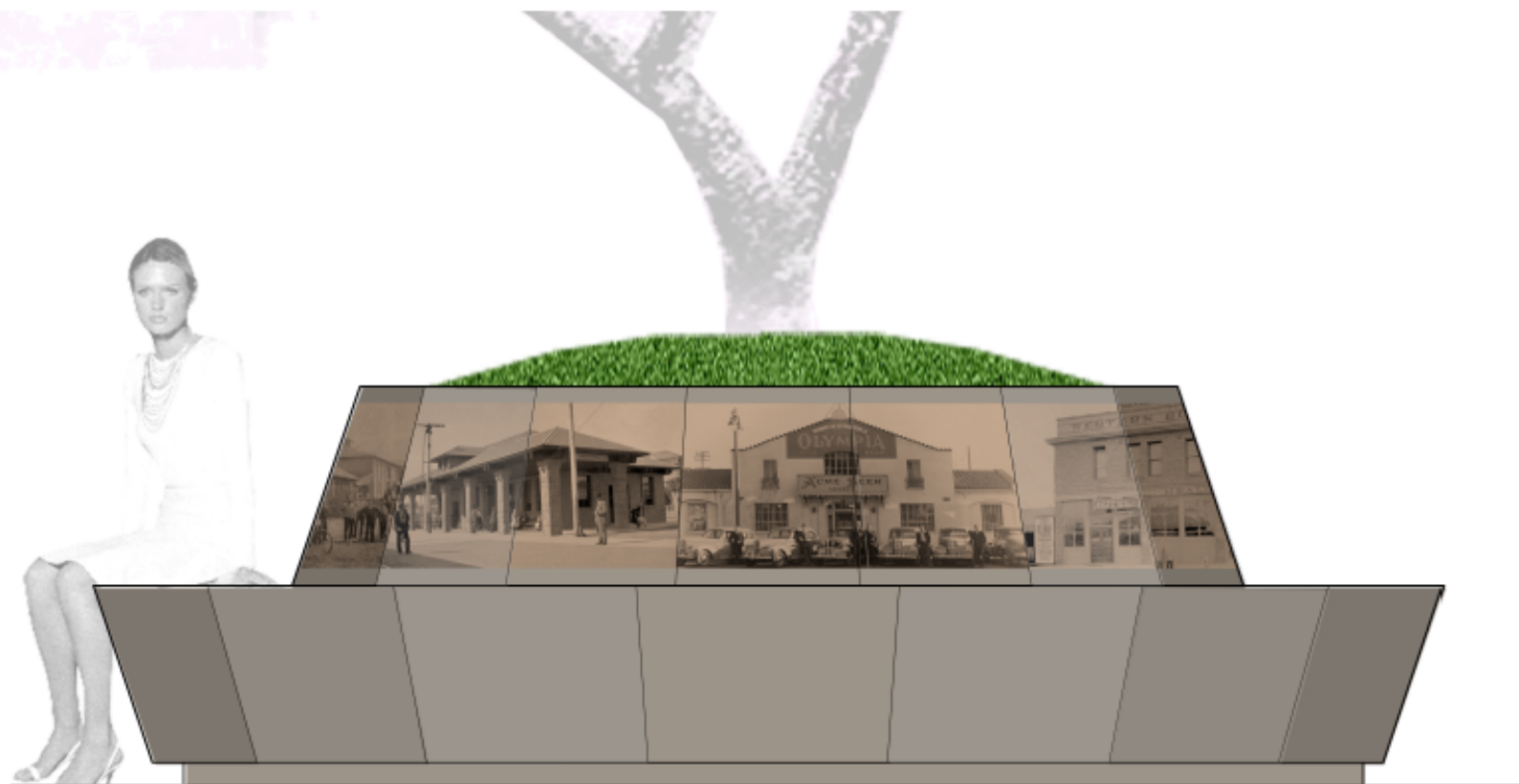
0 16 ft



ALL ABOARD: SAMPLE PANEL IMAGES

SCALE: NOT TO SCALE

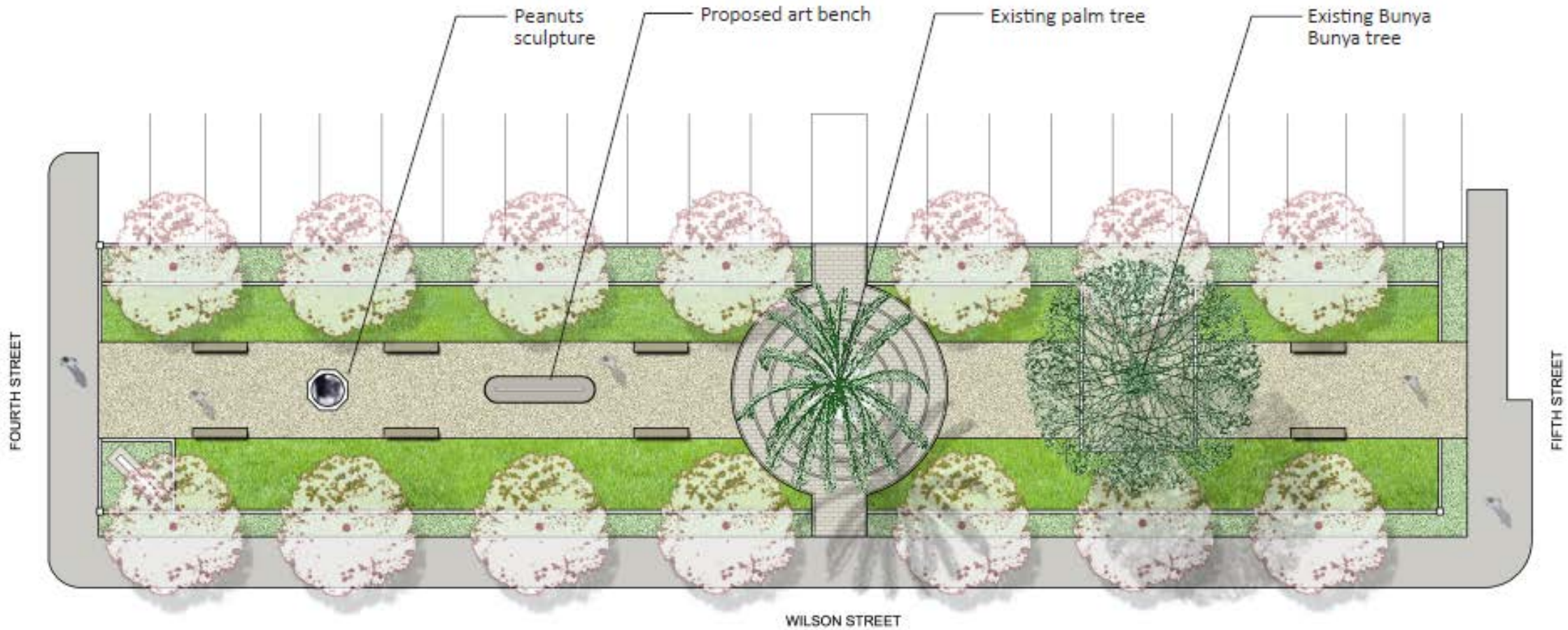
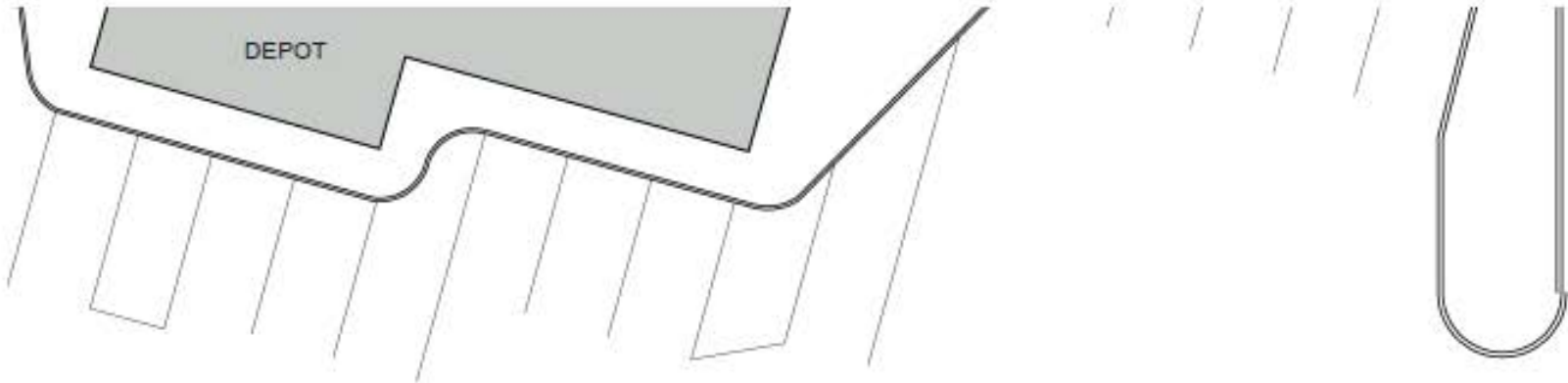
- 8 landscape-oriented images total (images will have a crease at each bench angle)
- or 16 portrait-oriented images



Option 2

SUGGESTED SITE PLAN

SCALE: 1" = 16' - 0"

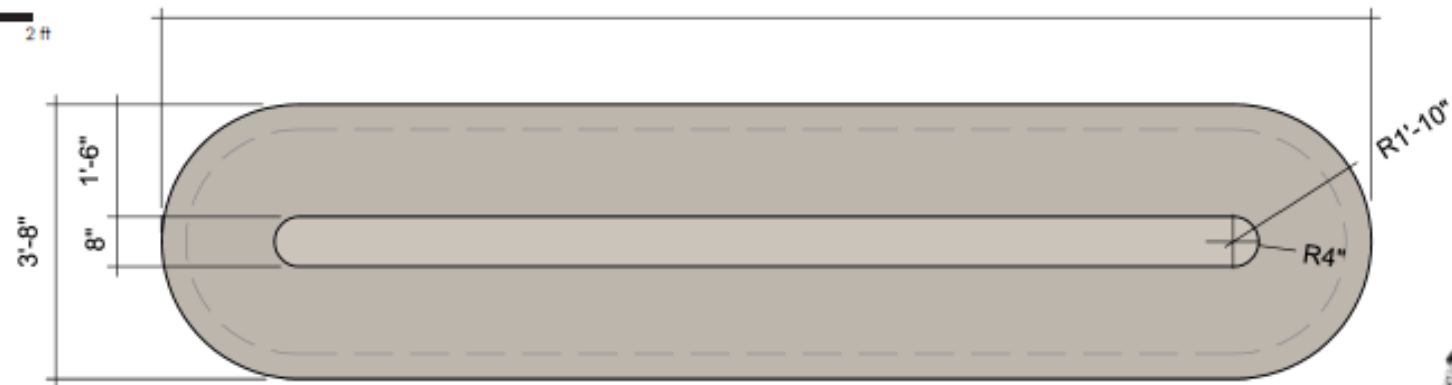


ALL ABOARD: LINEAR BENCH

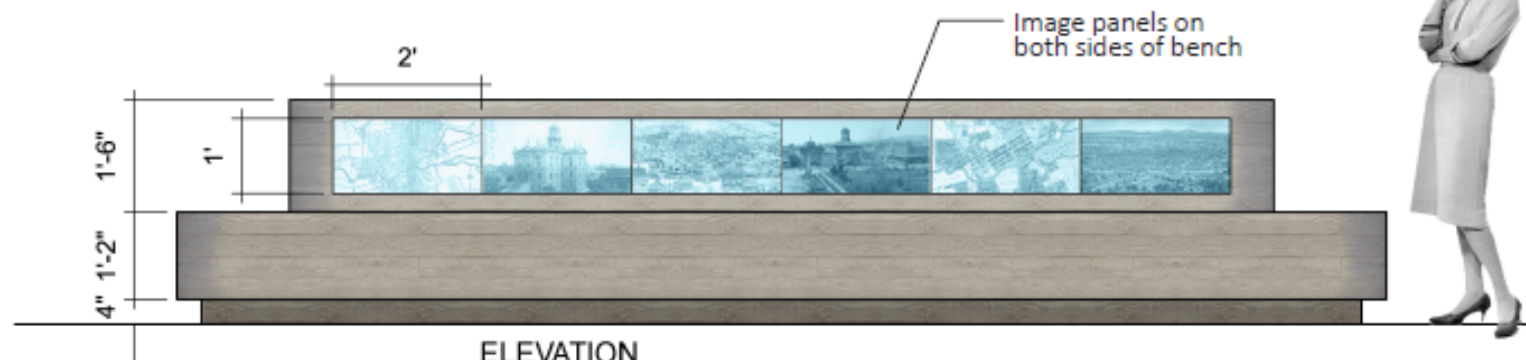
SCALE: 1" = 2' - 0"

0 2 ft

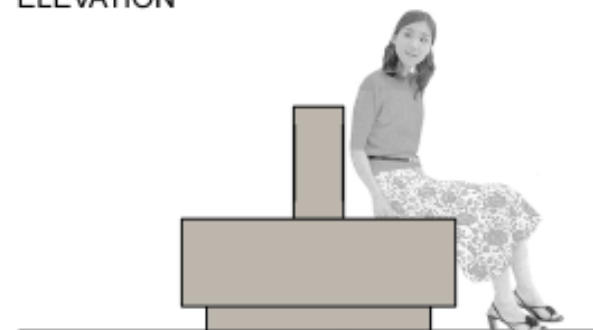
16'-2" TOTAL LINEAR FEET = 36'-6-1/4"



PLAN VIEW



ELEVATION



SECTION

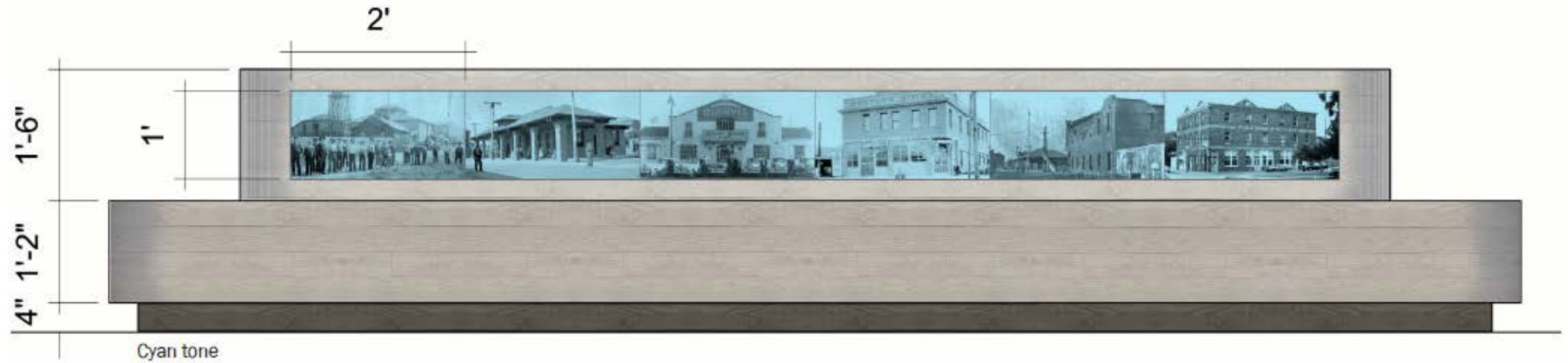
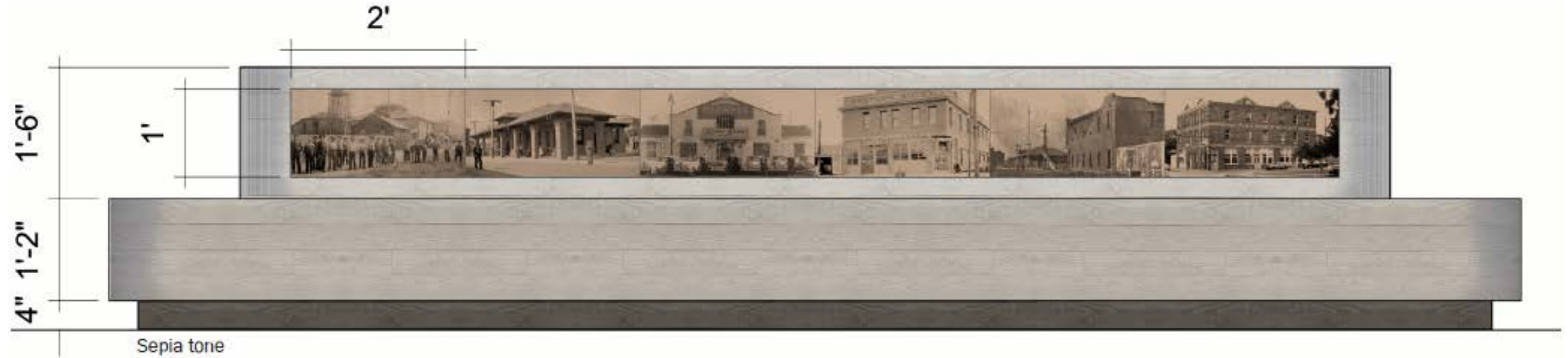


Inspiration: wood train station bench

ALL ABOARD: SAMPLE PANEL IMAGES

SCALE: NOT TO SCALE

- 6 (1'x 2') images on each side of bench or 12 total



Recommended Action

Selection of one final design for the art bench.

Next Steps

- Provide artist with hi-res scans of historic photographs
- Final photography selection
- Parks: Landscaping plans, community outreach
- Project timeline:

July – Sept	Artwork fabrication
TBD	Artwork installation