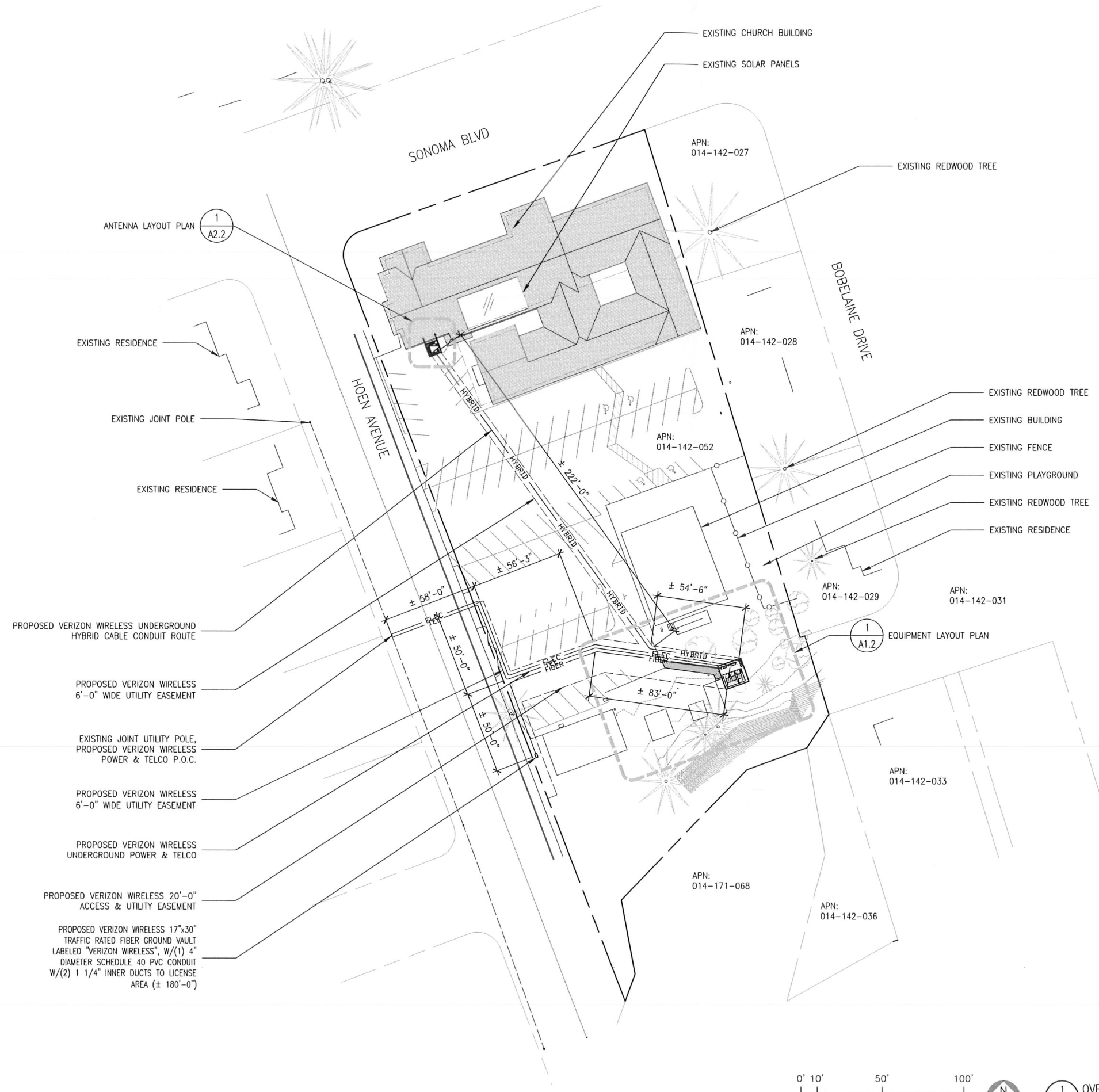
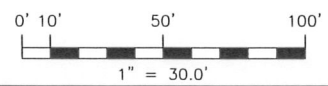


Z D D R A W I N G S I G N - O F F																	
DATE: _____ TIME: _____ % CWC-PLEASE RETURN BY: _____																	
<div><div></div><div>SIGNATURE _____ DATE _____</div></div>																	
SITE ACQUISITION: _____																	
PLANNING: _____																	
CONSTRUCTION: _____																	
MANAGEMENT: _____																	
<div><div></div><div>SIGNATURE _____ DATE _____</div></div>																	
CONSTRUCTION: _____																	
REAL ESTATE: _____																	
RF ENGINEER: _____																	
EQUIPMENT ENGINEER: _____																	
MW ENG./TRANSPORT: _____																	
OTHER (IF APPLICABLE) SIGNATURE _____ DATE _____																	
CODE COMPLIANCE ALL WORK AND MATERIALS SHALL BE PERFORMED AND INSTALLED IN ACCORDANCE WITH THE CURRENT EDITIONS OF THE FOLLOWING CODES AS ADOPTED BY THE LOCAL GOVERNING AUTHORITIES. NOTHING IN THESE PLANS IS TO BE CONSTRUED TO PERMIT WORK NOT CONFORMING TO THESE CODES: 2016 CALIFORNIA BUILDING STANDARDS CODE, TITLE 24, CALIFORNIA CODE OF REGULATIONS EFFECTIVE JANUARY 1, 2017 PART 1 CALIFORNIA BUILDING STANDARDS ADMINISTRATIVE CODE PART 2 CALIFORNIA BUILDING CODE PART 2.5 CALIFORNIA RESIDENTIAL BUILDING CODE PART 3 CALIFORNIA ELECTRICAL CODE PART 4 CALIFORNIA MECHANICAL CODE PART 5 CALIFORNIA PLUMBING CODE PART 6 CALIFORNIA ENERGY CODE PART 8 CALIFORNIA HISTORICAL BUILDING CODE PART 9 CALIFORNIA FIRE CODE PART 10 CALIFORNIA EXISTING BUILDING CODE PART 11 CALIFORNIA GREEN BUILDING STANDARDS CODE PART 12 CALIFORNIA REFERENCE STANDARDS CODE LOCAL COUNTY OR CITY ORDINANCES ACCESSIBILITY REQUIREMENTS: THIS FACILITY IS UNMANNED AND NOT FOR HUMAN HABITATION. ACCESSIBILITY NOT REQUIRED IN ACCORDANCE WITH THE 2016 CBC 11B-203.5, AND 11B-202.4 EXCEPTION 7.																	
DIRECTIONS FROM VERIZON OFFICE @ 2785 MITCHELL DRIVE, WALNUT CREEK, CA 94598: HEAD NORTHEAST ON MITCHELL DR TOWARD OAK GROVE RD TURN LEFT ONTO OAK GROVE RD USE THE LEFT 2 LANES TO TURN LEFT ONTO TREAT BLVD TURN RIGHT ONTO BUSKIRK AVE USE THE LEFT LANE TO TAKE THE INTERSTATE 680 N RAMP MERGE ONTO I-680 N KEEP LEFT AT THE FORK TO STAY ON I-680 N PARTIAL TOLL ROAD KEEP LEFT AT THE FORK TO CONTINUE ON I-680 PARTIAL TOLL ROAD USE THE LEFT 2 LANES TO TAKE EXIT 58A FOR INTERSTATE 780 TOWARD BENICIA/VALLEJO CONTINUE ONTO I-780 W TAKE EXIT 1B TOWARD SACRAMENTO MERGE ONTO I-80 E TAKE EXIT 33 FOR CA-37 TOWARD NAPA CONTINUE ONTO CA-37 W TURN RIGHT ONTO LAKEVILLE RD TURN RIGHT TO MERGE ONTO US-101 N MERGE ONTO US-101 N USE THE RIGHT 2 LANES TO TAKE EXIT 488B TO MERGE ONTO CA-12 E TOWARD SONOMA USE THE LEFT LANE TO TURN LEFT ONTO FARMERS LN TURN LEFT ONTO HOEN AVE TURN RIGHT ONTO SONOMA AVE																	
LOCATION PLAN 																	
INDEX OF DRAWINGS <table><thead><tr><th>SHEET NUMBER</th><th>SHEET TITLE</th></tr></thead><tbody><tr><td>T1.1</td><td>TITLE SHEET, LOCATION PLAN, PROJECT DATA</td></tr><tr><td>C-1</td><td>CIVIL SURVEY SHEET</td></tr><tr><td>A1.1</td><td>OVERALL SITE PLAN</td></tr><tr><td>A1.2</td><td>ENLARGED SITE PLAN</td></tr><tr><td>A2.1</td><td>EQUIPMENT LAYOUT PLAN</td></tr><tr><td>A2.2</td><td>ANTENNA LAYOUT PLAN</td></tr><tr><td>A3.1</td><td>ELEVATIONS</td></tr></tbody></table>		SHEET NUMBER	SHEET TITLE	T1.1	TITLE SHEET, LOCATION PLAN, PROJECT DATA	C-1	CIVIL SURVEY SHEET	A1.1	OVERALL SITE PLAN	A1.2	ENLARGED SITE PLAN	A2.1	EQUIPMENT LAYOUT PLAN	A2.2	ANTENNA LAYOUT PLAN	A3.1	ELEVATIONS
SHEET NUMBER	SHEET TITLE																
T1.1	TITLE SHEET, LOCATION PLAN, PROJECT DATA																
C-1	CIVIL SURVEY SHEET																
A1.1	OVERALL SITE PLAN																
A1.2	ENLARGED SITE PLAN																
A2.1	EQUIPMENT LAYOUT PLAN																
A2.2	ANTENNA LAYOUT PLAN																
A3.1	ELEVATIONS																
PROJECT DESCRIPTION PROPOSED VERIZON WIRELESS UNMANNED TELECOMMUNICATIONS FACILITY INCLUDING: - A 8'-0"x8'-0" ANTENNA LEASE AREA. - A 15'-0"x15'-0" EQUIPMENT LEASE AREA. - A FENCE @ EQUIPMENT LEASE AREA PERIMETER. - OUTDOOR EQUIPMENT CABINETS. - POWER & TELCO UTILITIES BROUGHT TO FACILITY. - ANTENNAS W/ASSOCIATED STEEPLE MOUNTED EQUIPMENT MOUNTED ON WITHIN PROPOSED CHURCH STEEPLE.																	
PROJECT SUMMARY ASSESSOR'S PARCEL NUMBER: 014-142-052 JURISDICTION: CITY OF SANTA ROSA OCCUPANCY: S-2 (UNMANNED TELECOMMUNICATIONS FACILITY) U (TOWER) TYPE OF CONSTRUCTION: V-B ZONING: R2																	
PROJECT MILESTONES <table><tbody><tr><td>02/02/2017</td><td>90% ZONING DOCUMENTS</td></tr><tr><td>03/23/2017</td><td>100% ZONING DOCUMENTS</td></tr><tr><td>12/08/2017</td><td>100% ZONING DOCUMENTS REV 1</td></tr><tr><td>12/20/2017</td><td>100% ZONING DOCUMENTS REV 2</td></tr><tr><td>01/02/2018</td><td>100% ZONING DOCUMENTS REV 3</td></tr><tr><td>01/08/2018</td><td>100% ZONING DOCUMENTS REV 4</td></tr><tr><td>XX/XX/XXXX</td><td>90% CONSTRUCTION DOCUMENTS</td></tr><tr><td>XX/XX/XXXX</td><td>100% CONSTRUCTION DOCUMENTS</td></tr></tbody></table> <div>City of Santa Rosa</div> <div>JAN 16 2018</div> <div>Planning & Economic Development Department</div>		02/02/2017	90% ZONING DOCUMENTS	03/23/2017	100% ZONING DOCUMENTS	12/08/2017	100% ZONING DOCUMENTS REV 1	12/20/2017	100% ZONING DOCUMENTS REV 2	01/02/2018	100% ZONING DOCUMENTS REV 3	01/08/2018	100% ZONING DOCUMENTS REV 4	XX/XX/XXXX	90% CONSTRUCTION DOCUMENTS	XX/XX/XXXX	100% CONSTRUCTION DOCUMENTS
02/02/2017	90% ZONING DOCUMENTS																
03/23/2017	100% ZONING DOCUMENTS																
12/08/2017	100% ZONING DOCUMENTS REV 1																
12/20/2017	100% ZONING DOCUMENTS REV 2																
01/02/2018	100% ZONING DOCUMENTS REV 3																
01/08/2018	100% ZONING DOCUMENTS REV 4																
XX/XX/XXXX	90% CONSTRUCTION DOCUMENTS																
XX/XX/XXXX	100% CONSTRUCTION DOCUMENTS																



PARKING STALLS:	83
ACCESSIBLE STALLS:	4
TOTAL STALLS:	87

- PROPOSED VERIZON WIRELESS UNDERGROUND HYBRID CABLE CONDUIT ROUTE
- PROPOSED VERIZON WIRELESS 6'-0" WIDE UTILITY EASEMENT
- EXISTING JOINT UTILITY POLE, PROPOSED VERIZON WIRELESS POWER & TELCO P.O.C.
- PROPOSED VERIZON WIRELESS 6'-0" WIDE UTILITY EASEMENT
- PROPOSED VERIZON WIRELESS UNDERGROUND POWER & TELCO
- PROPOSED VERIZON WIRELESS 20'-0" ACCESS & UTILITY EASEMENT
- PROPOSED VERIZON WIRELESS 17"x30" TRAFFIC RATED FIBER GROUND VAULT LABELED "VERIZON WIRELESS", W/(1) 4" DIAMETER SCHEDULE 40 PVC CONDUIT W/(2) 1 1/4" INNER DUCTS TO LICENSE AREA (± 180'-0")




1 OVERALL SITE PLAN
A1.1 SCALE: 1" = 30'-0"



MST ARCHITECTS
1620 SONOMA AVE
SANTA ROSA, CA 95405
916-872-8638
www.MSTArchitects.com



COMPLETE
Wireless Consulting, Inc.



verizon

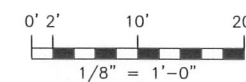
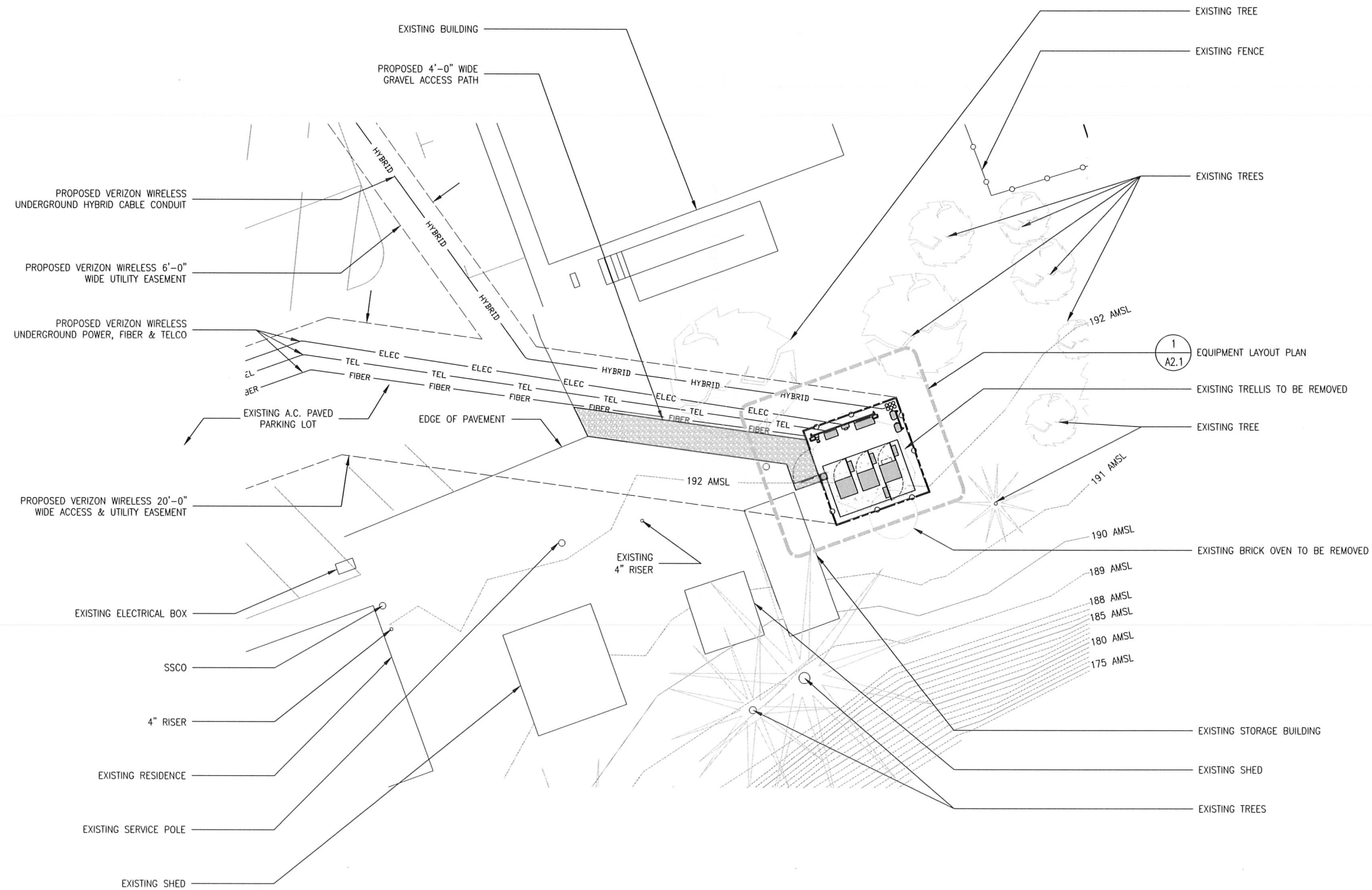
MONTGOMERY HS
1620 SONOMA AVE
SANTA ROSA, CA 95405

SHEET TITLE:
OVERALL SITE PLAN

Revisions:
△ --
△ --
△ --
△ --
△ --
File: 162.1989_LAYOUTS.dwg
Drawn By: JCE
Checked By: TST
Scale: AS NOTED
Date: 12/20/17

Job No. 162.1989

A1.1



1 ENLARGED SITE PLAN
A1.2 SCALE: 1/8" = 1'-0"

verizon
MONTGOMERY HS
1620 SONOMA AVE
SANTA ROSA, CA 95405

SHEET TITLE:

ENLARGED SITE PLAN

MST ARCHITECTS
1520 River Park Drive, Sacramento, CA 95815
916-567-9630
www.MSTArchitects.com

COMPLETE
Wireless Consulting, Inc.

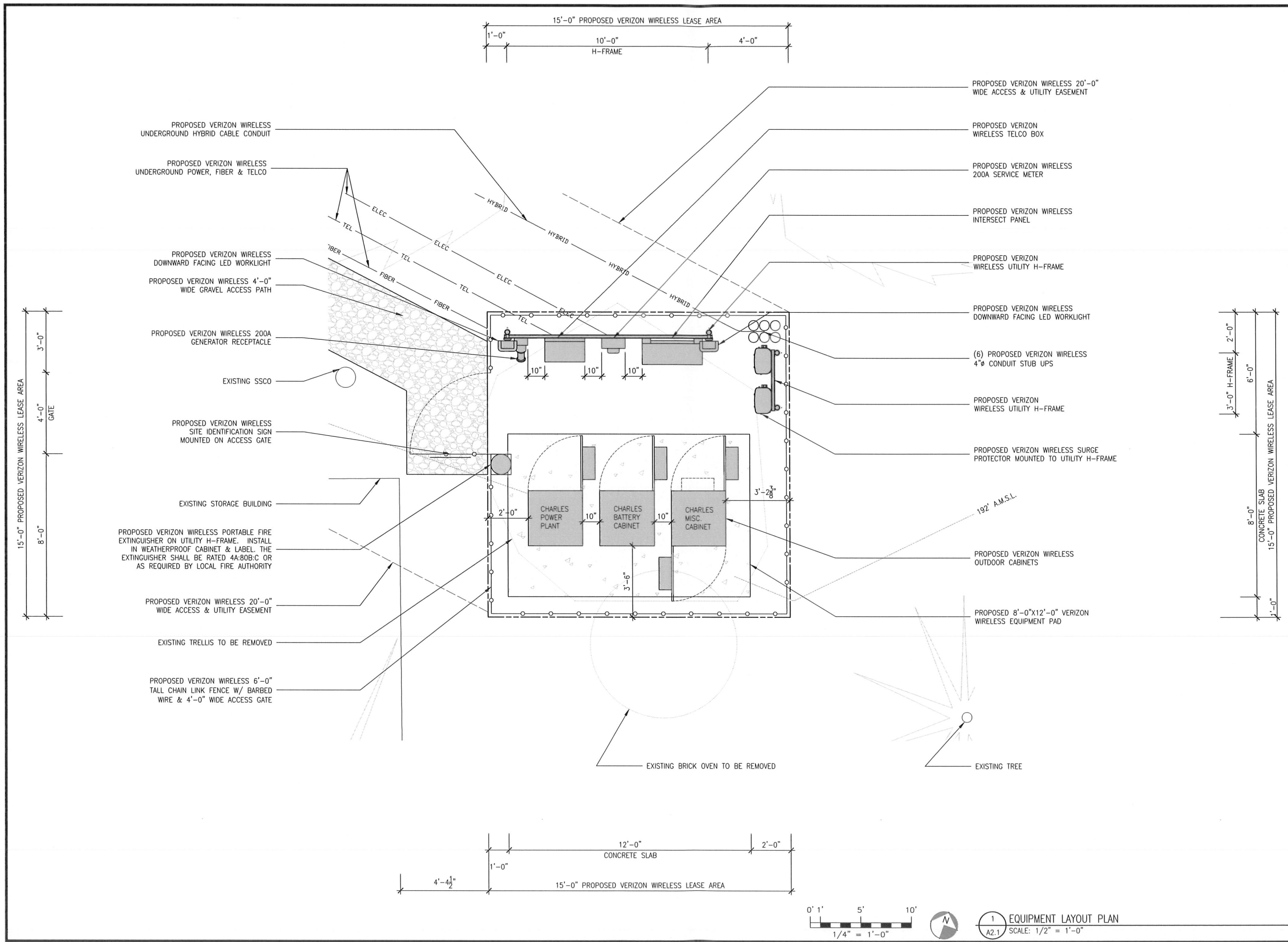
THESE DRAWINGS AND SPECIFICATIONS, AS INSTRUMENTS OF SERVICE, ARE AND SHALL REMAIN THE PROPERTY OF MST ARCHITECTS, INC. WHETHER THE PROJECTS FOR WHICH THEY ARE PREPARED ARE COMPLETED OR NOT. NO PART OF THESE DRAWINGS OR SPECIFICATIONS ARE TO BE REPRODUCED OR USED IN ANY MANNER WITHOUT THE WRITTEN CONSENT OF THE ARCHITECT. COPYRIGHT © 2017 MST ARCHITECTS, INC. ALL RIGHTS RESERVED.


Revisions:	
Δ --	
Δ --	
Δ --	
Δ --	
Δ --	

File: 162.1989_LAYOUTS.dwg
Drawn By: JCE
Checked By: 1ST
Scale: AS NOTED
Date: 12/20/17


Job No. 162.1989

A1.2





MST ARCHITECTS
1539 Blue Peak Dr., Sacramento, CA 95815
916-567-9630
www.MSTArchitects.com



MONTGOMERY HS
1620 SONOMA AVE
SANTA ROSA, CA 95405

EQUIPMENT LAYOUT PLAN

SHEET TITLE:

Revisions:	
Δ	--
Δ	--
Δ	--
Δ	--
Δ	--

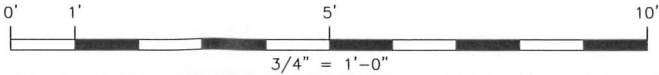
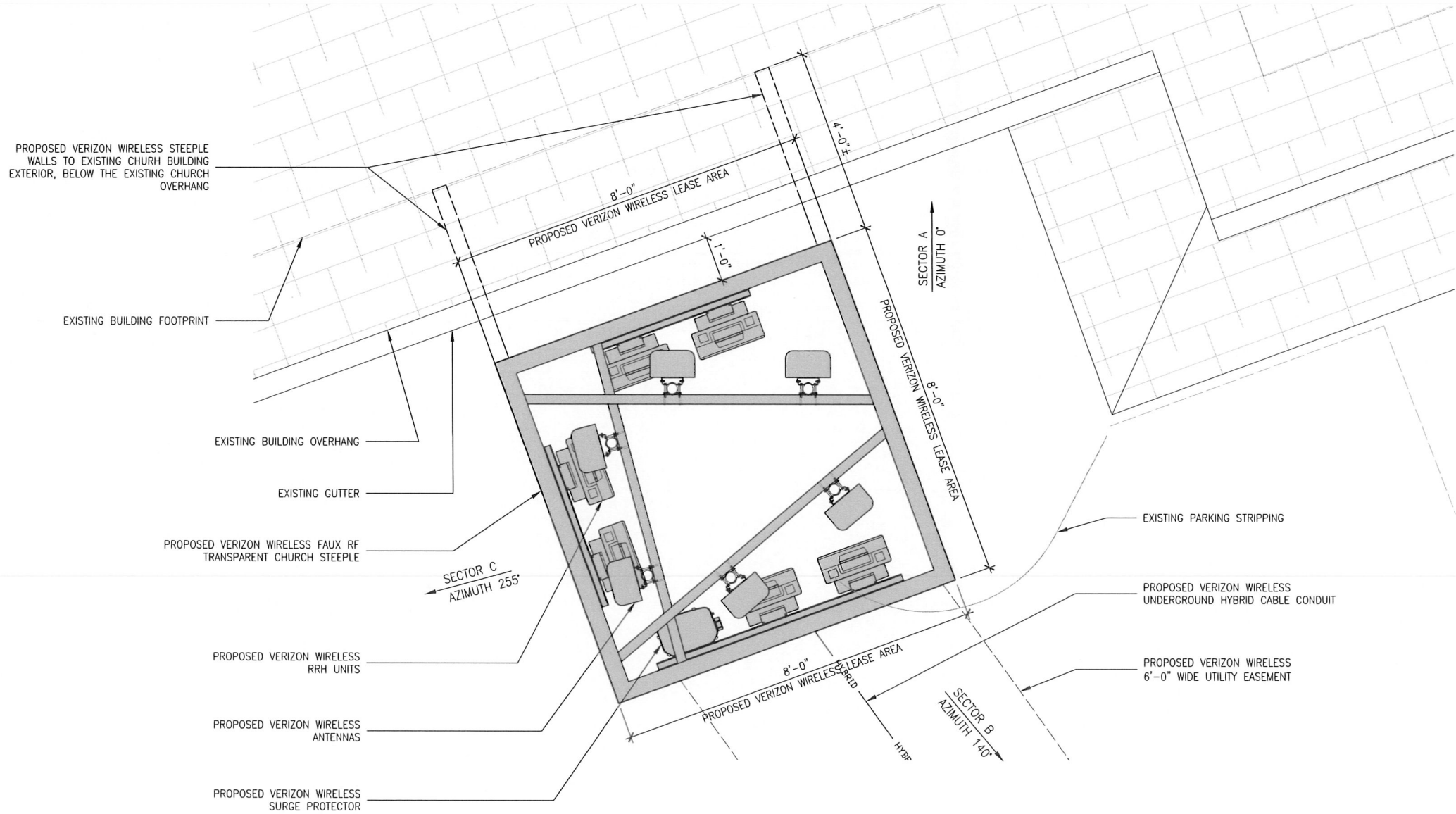
File: 162.1989_LAYOUTS.dwg
Drawn By: JCE
Checked By: TST
Scale: AS NOTED
Date: 12/20/17

Job No. 162.1989

A2.1

THESE DRAWINGS AND SPECIFICATIONS, AS INSTRUMENTS OF SERVICE, ARE AND SHALL REMAIN THE PROPERTY OF MST ARCHITECTS, INC. WHETHER THE PRODUCTS FOR WHICH THEY ARE CREATED OR NOT. THESE DRAWINGS AND SPECIFICATIONS SHALL NOT BE USED BY ANY PERSON OR ENTITY ON OTHER PROJECTS WITHOUT PRIOR WRITTEN CONSENT OF THE ARCHITECT. COPYRIGHT, MST ARCHITECTS, INC. ALL RIGHTS RESERVED.

STEEPLE MOUNTED EQUIPMENT SCHEDULE (PRELIMINARY & SUBJECT TO CHANGE)					
EQUIPMENT	DESCRIPTION	QUANTITY			TOTAL
		SECTOR A	SECTOR B	SECTOR C	
ANTENNA	TO BE DETERMINED	2	2	2	6
RRH / RADIO	TO BE DETERMINED	3	3	3	9
SURGE PROTECTOR/HYBRID	RAYCAP / HYBRID TRUNK CABLE	1/1			1/1



1 ANTENNA LAYOUT PLAN
A2.2 SCALE: 3/4" = 1'-0"

verizon

MONTGOMERY HS
1620 SONOMA AVE
SANTA ROSA, CA 95405


SHEET TITLE:
ANTENNA LAYOUT PLAN

Revisions:
△ --
△ --
△ --
△ --
△ --


File: 162.1989_LAYOUTS.dwg
Drawn By: JOE
Checked By: TST
Scale: AS NOTED
Date: 12/20/17

Job No. 162.1989

A2.2



MST ARCHITECTS
WIRELESS DIVISION
1520 River Park Drive, Sacramento, CA 95815
www.MSTArchitects.com



COMPLETE
Wireless Consulting, Inc.
THESE DRAWINGS AND SPECIFICATIONS ARE INSTRUMENTS OF SERVICE, ARE NOT TO BE REPRODUCED OR TRANSMITTED IN ANY FORM OR BY ANY MEANS, ELECTRONIC OR MECHANICAL, INCLUDING PHOTOCOPYING, RECORDING, OR BY ANY INFORMATION STORAGE AND RETRIEVAL SYSTEM, WITHOUT THE WRITTEN CONSENT OF THE ARCHITECT. COPYRIGHT, 2017, COMPLETE WIRELESS CONSULTING, INC. ALL RIGHTS RESERVED.

Revisions:	
△ --	
△ --	
△ --	
△ --	
△ --	

File: 162.1989_LAYOUTS.dwg
Drawn By: JCE
Checked By: TST
Scale: AS NOTED
Date: 12/20/17

Job No. 162.1989

A3.1

