



REPLACEMENT OF FIRE STATION 5 AT NEWGATE CT. AND FURTHER EVALUATION OF LOCATION FOR RECONSTRUCTION

City Council Meeting
July 10, 2018

Jason Jenkins
Battalion Chief, SRFD

BACKGROUND

The 2017 historic Northern California Firestorm (aka Tubbs Fire) destroyed Santa Rosa Fire Station 5 on Newgate Ct.

In an effort to restore emergency fire services to the Fountaingrove area, an evaluation shall be conducted to determine if the fire station should be reconstructed at the Newgate Ct. site or if the fire station should be relocated to the lower Fountaingrove Parkway area. Staff would like to evaluate the location, size, and community needs as part of the rebuild process.

BACKGROUND

- Fire Station 5 at Newgate Ct. was built based on the 2002 Standards of Coverage Plan.
- An opportunity exists to evaluate the appropriate size, design and location of a newly constructed fire station that shall meet the needs of the community for the next 50-80 years.
- Staff would like to evaluate whether the station should be constructed at the Newgate Ct. location or moved to the lower Fountaingrove area.

STANDARDS OF COVERAGE AND DEPLOYMENT PLAN 2016

- Looks at distribution and concentration of fixed and mobile resources and considers:
 - future development in Fountaingrove area
 - population density
 - response unit workload
 - effective fire force
 - responses to high frequency facilities
 - cardiac arrest
 - geographic and weather related risks
 - 2 in 2 out
 - response times - mapping

PROPOSED

Identify fire station location options and design needs for a fire station that will enhance emergency services to the Fountaingrove area.

A strategically located and designed fire station accomplishes:

- Expedient response times to meet population and response forecast
- Enhance emergency coverage in a High Fire Severity Zones

RELOCATION BENEFITS

- Staff and house an additional engine during critical events
- Severe weather
- Operate a forward incident command post during critical incidents
- Store reserve fire apparatus
- Host community meetings
- Assists in meeting response time goals to a larger population

ANATOMY OF A CALL

- 911 call processing time – 1 minute (NFPA 1710)

SRFD RESPONSE TIME

- Turnout time – 1 minute (NFPA 1710)
- Drive time goal – 4 minutes
- Turnout time + Drive time goal = Response time

SRFD performance goal for response time is to have a unit arrive on-scene of emergency incidents within five minutes, 90 percent of the time. The following maps reflect the SRFD response time.

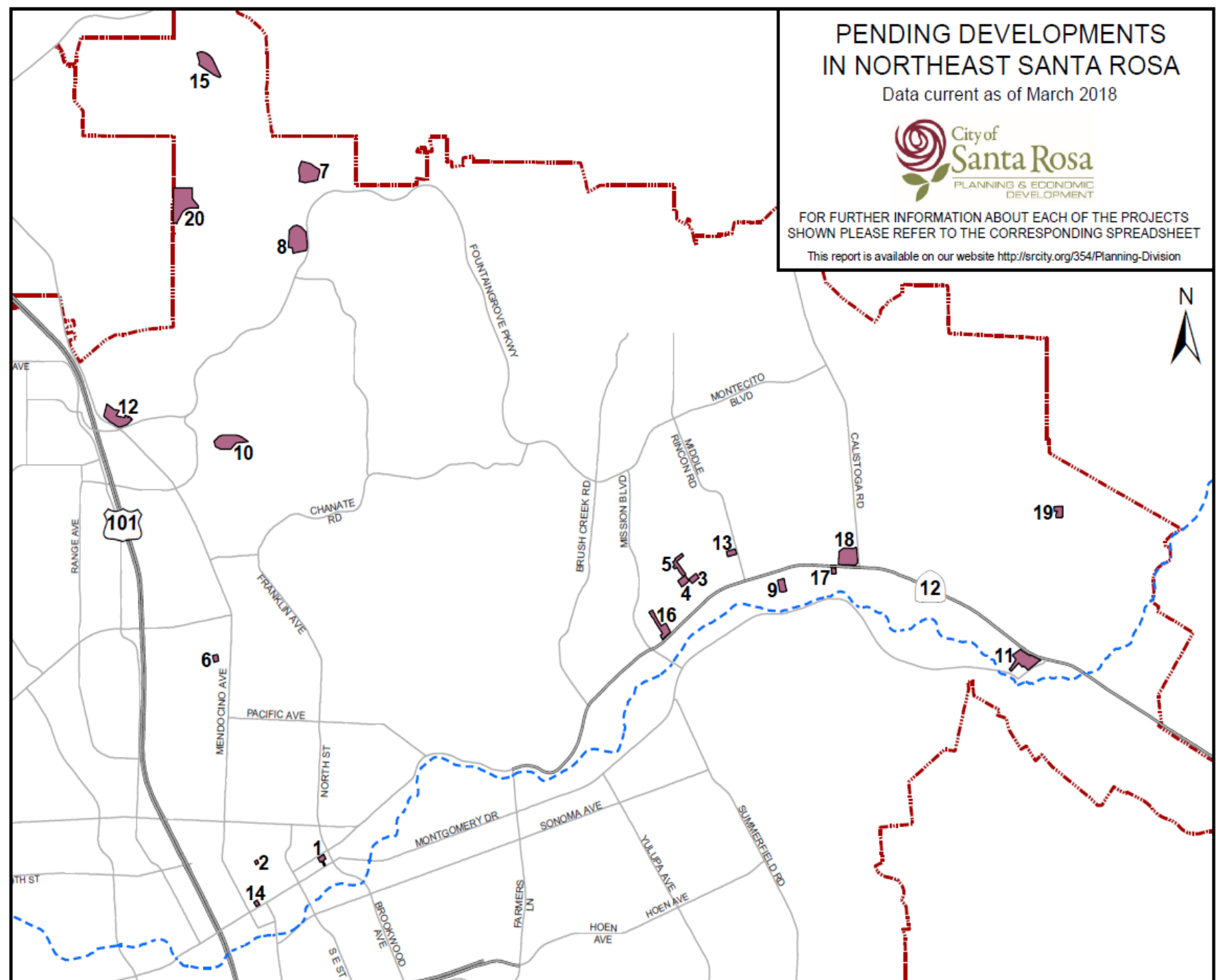
PENDING DEVELOPMENTS IN NORTHEAST SANTA ROSA

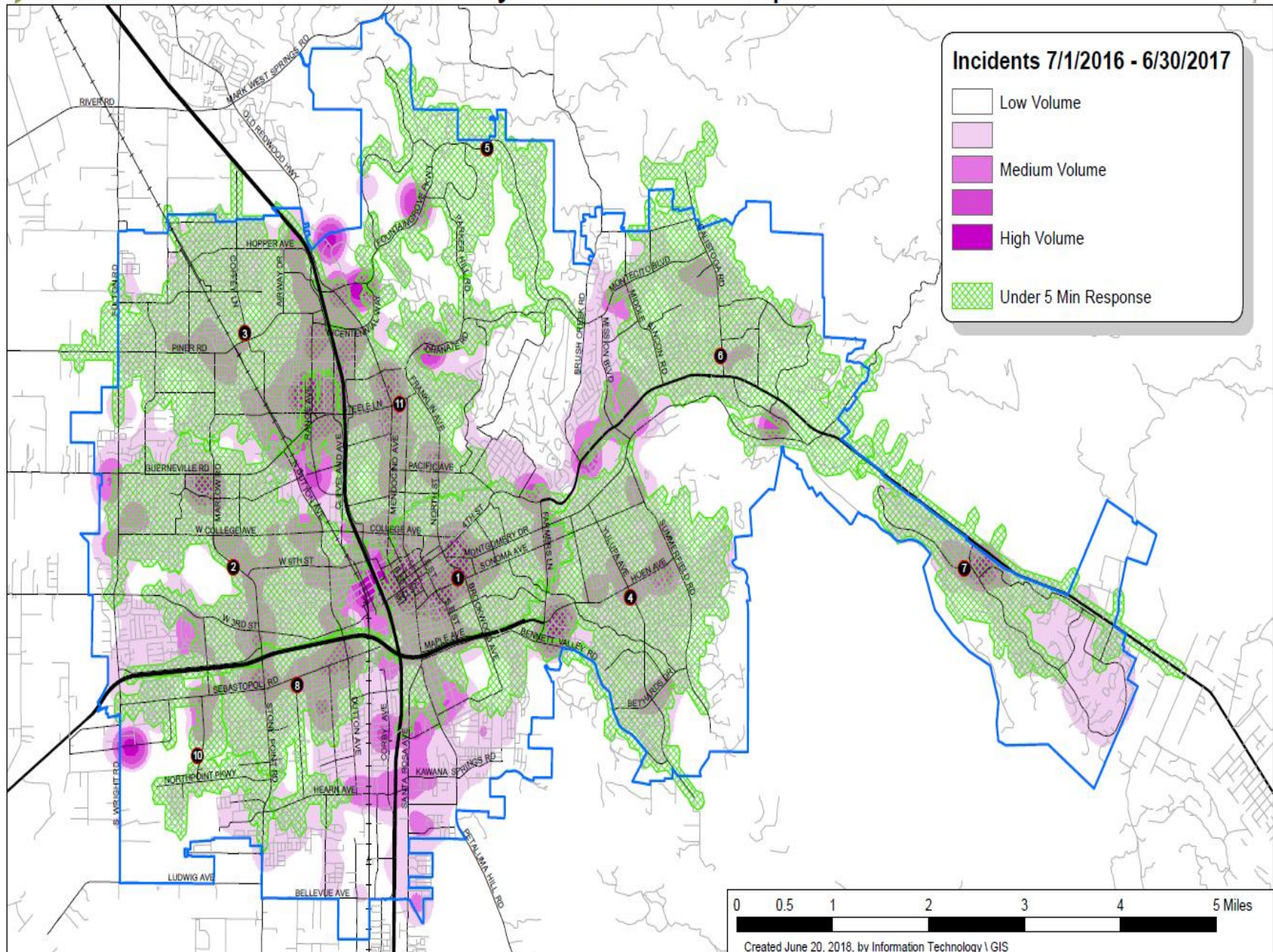
Data current as of March 2018



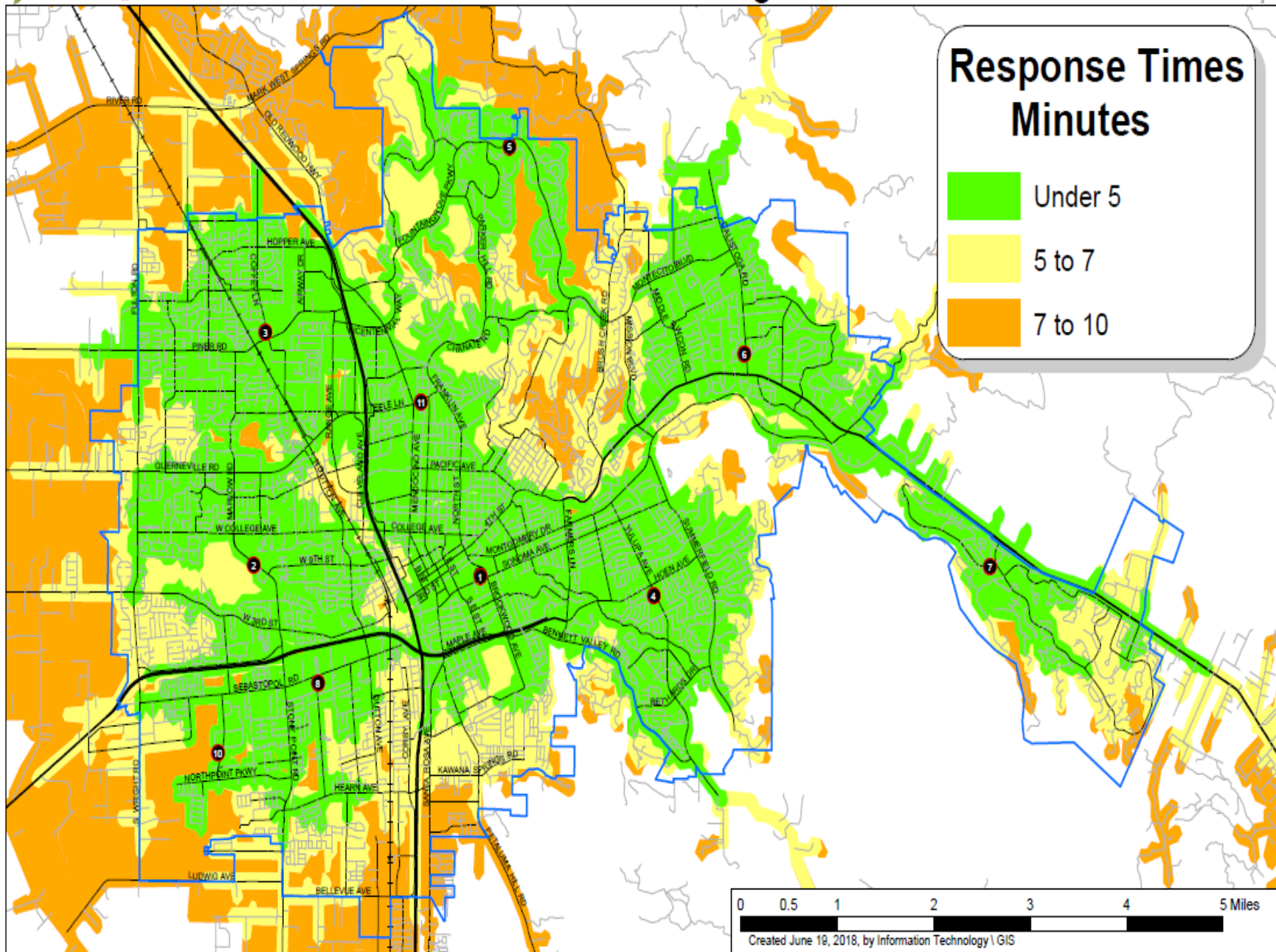
FOR FURTHER INFORMATION ABOUT EACH OF THE PROJECTS
SHOWN PLEASE REFER TO THE CORRESPONDING SPREADSHEET

This report is available on our website <http://srcity.org/354/Planning-Division>





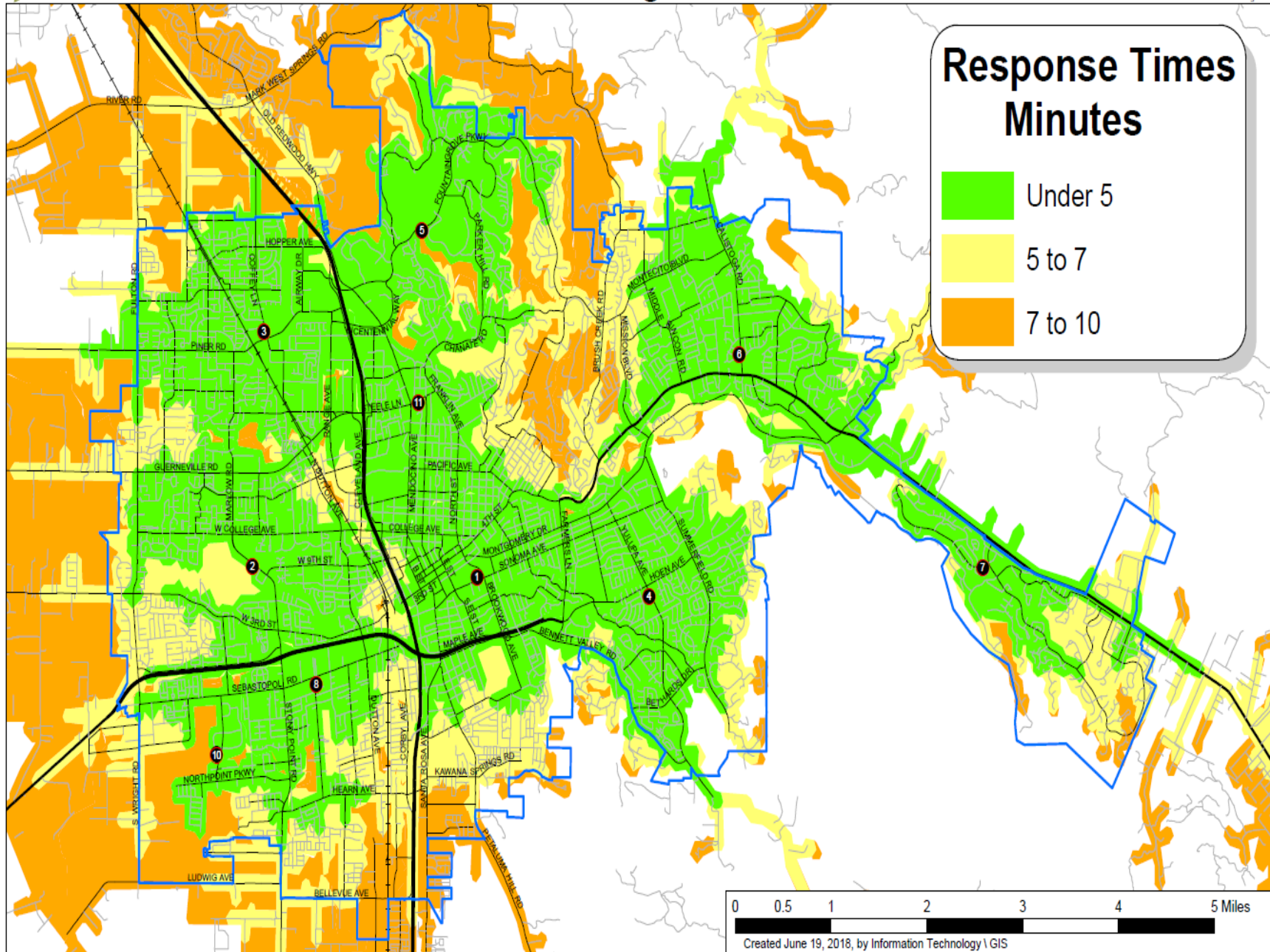
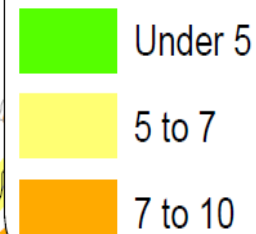
Current Station Configuration



Lower Fountaingrove Station 5



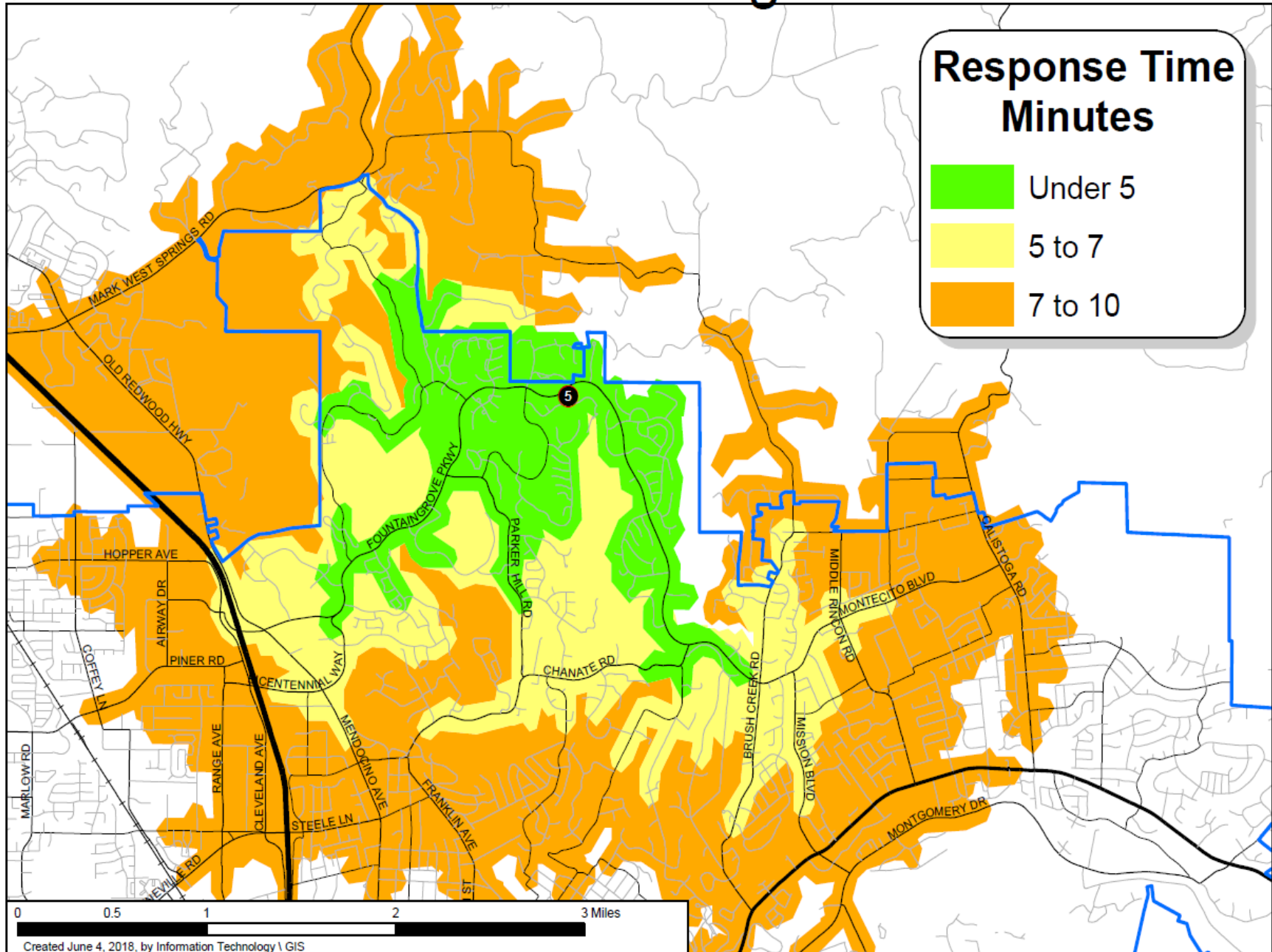
Response Times Minutes



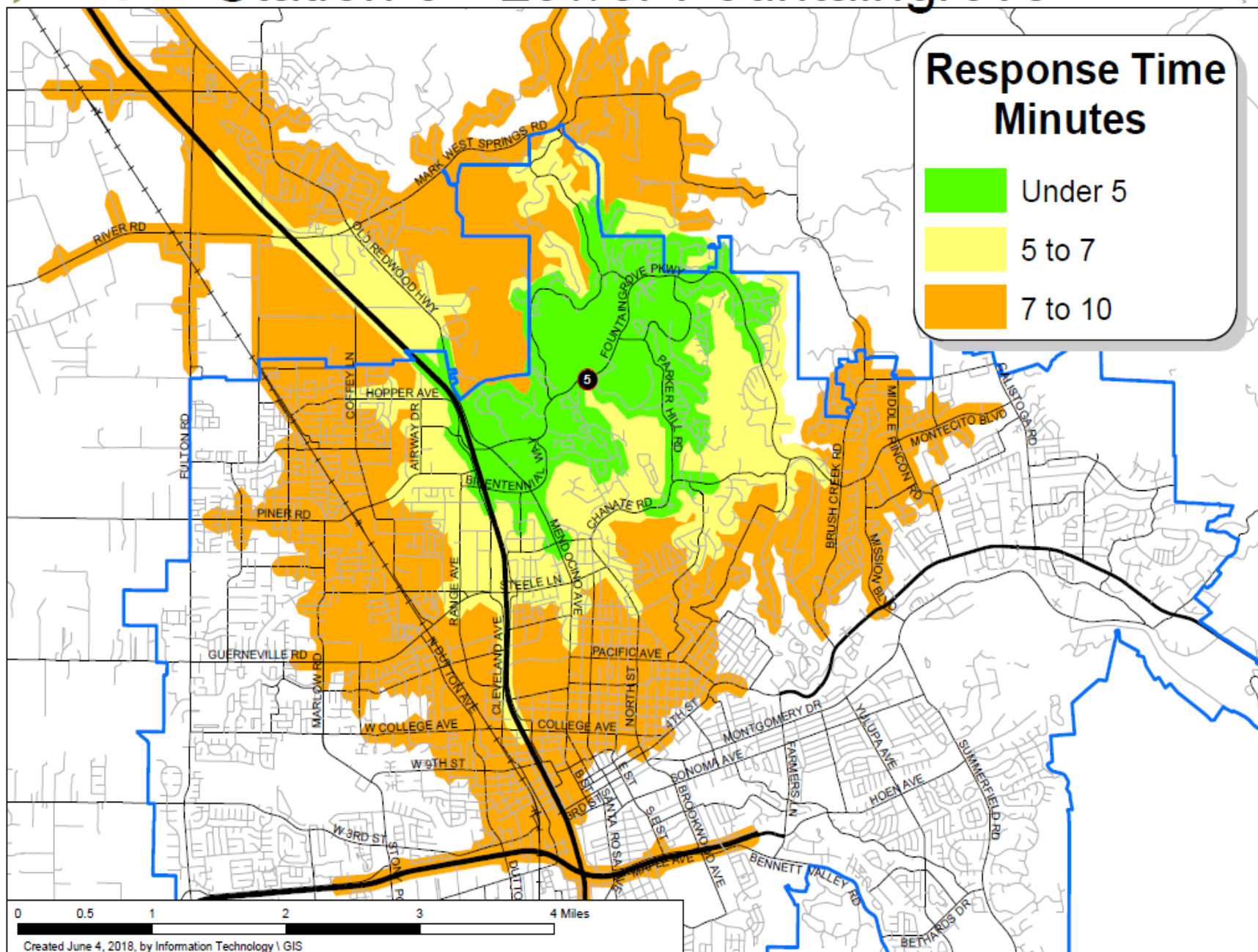
0 0.5 1 2 3 4 5 Miles

Created June 19, 2018, by Information Technology \ GIS

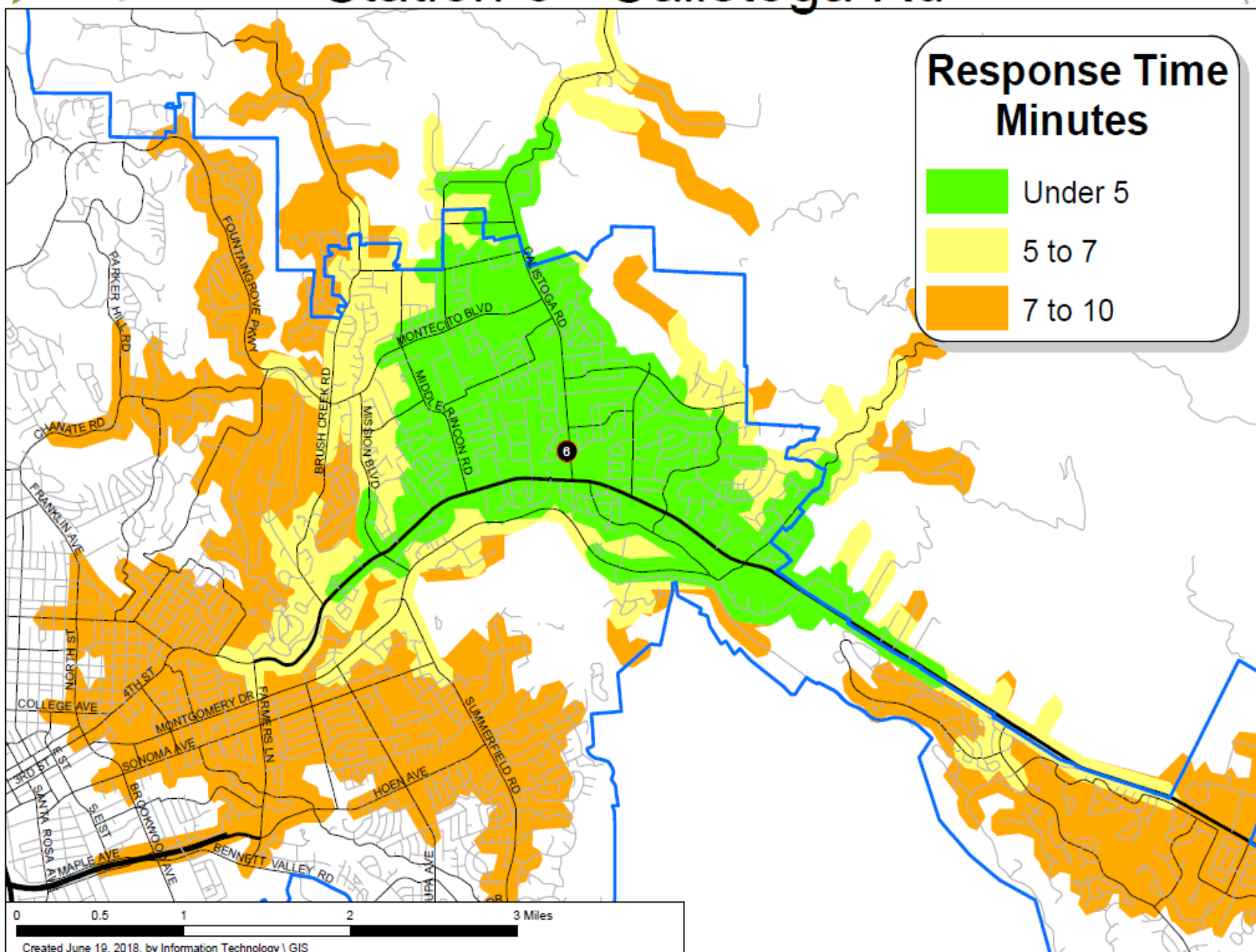
Station 5 - Newgate Ct



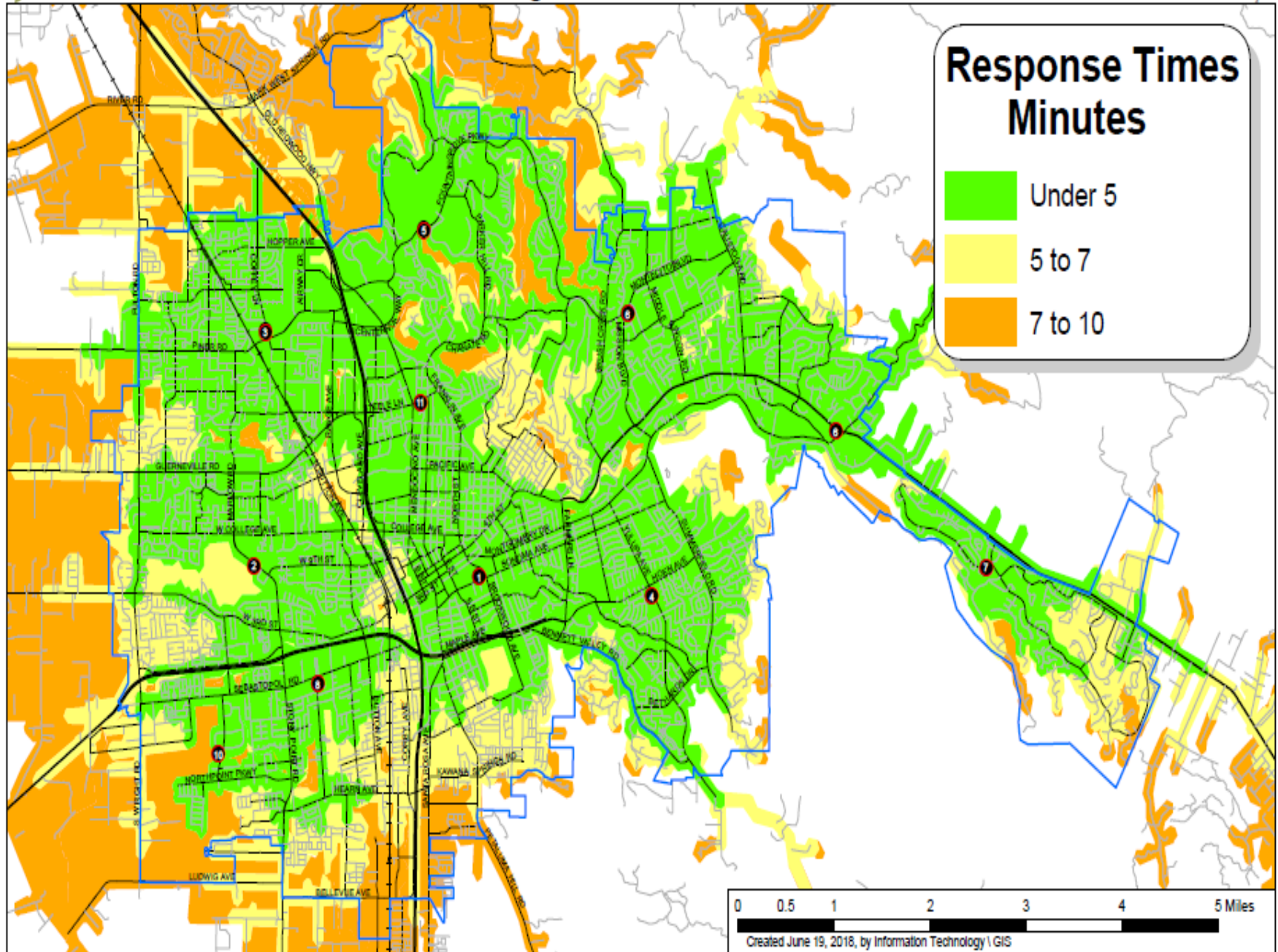
Station 5 - Lower Fountaingrove



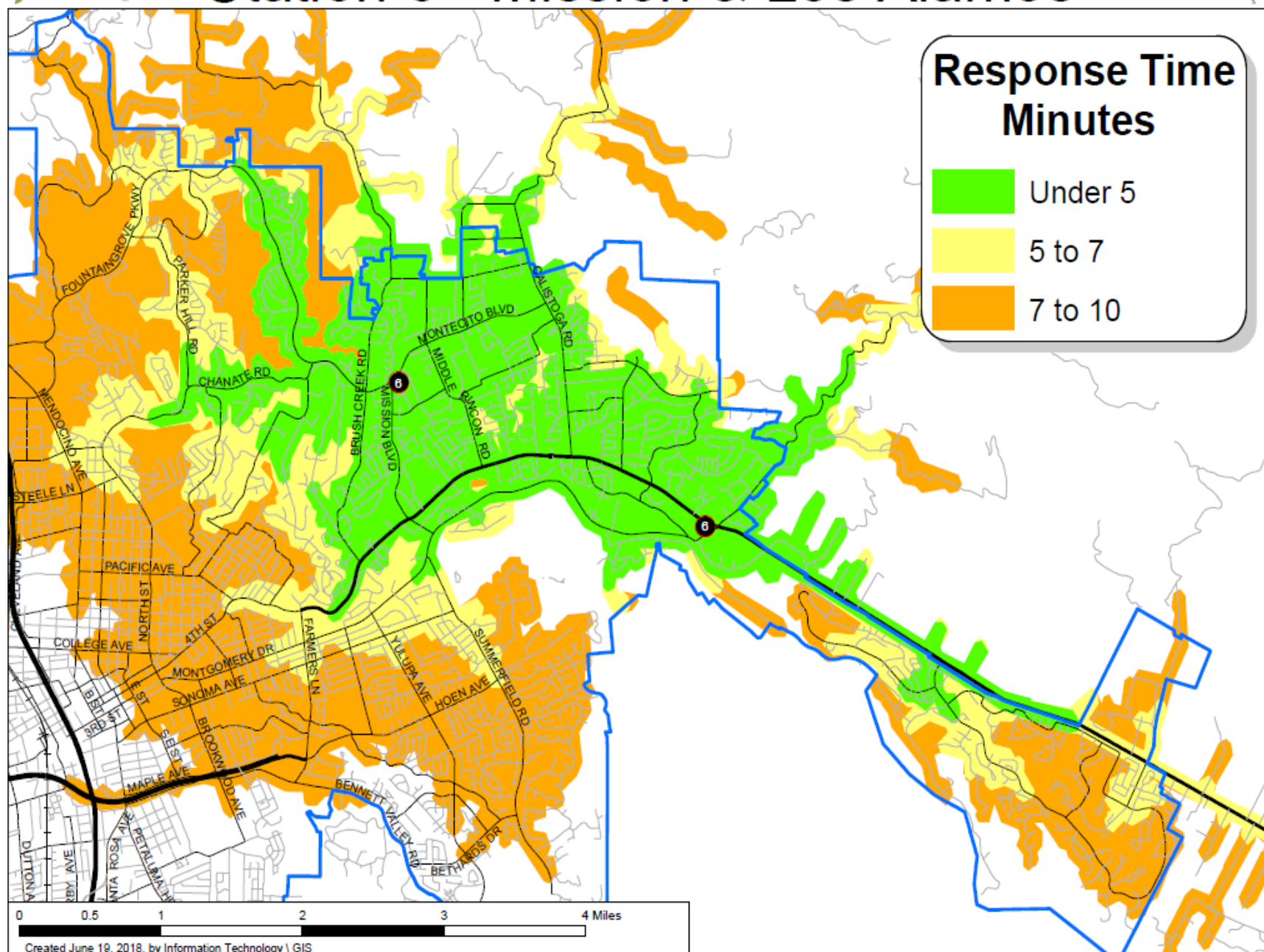
Station 6 - Calistoga Rd



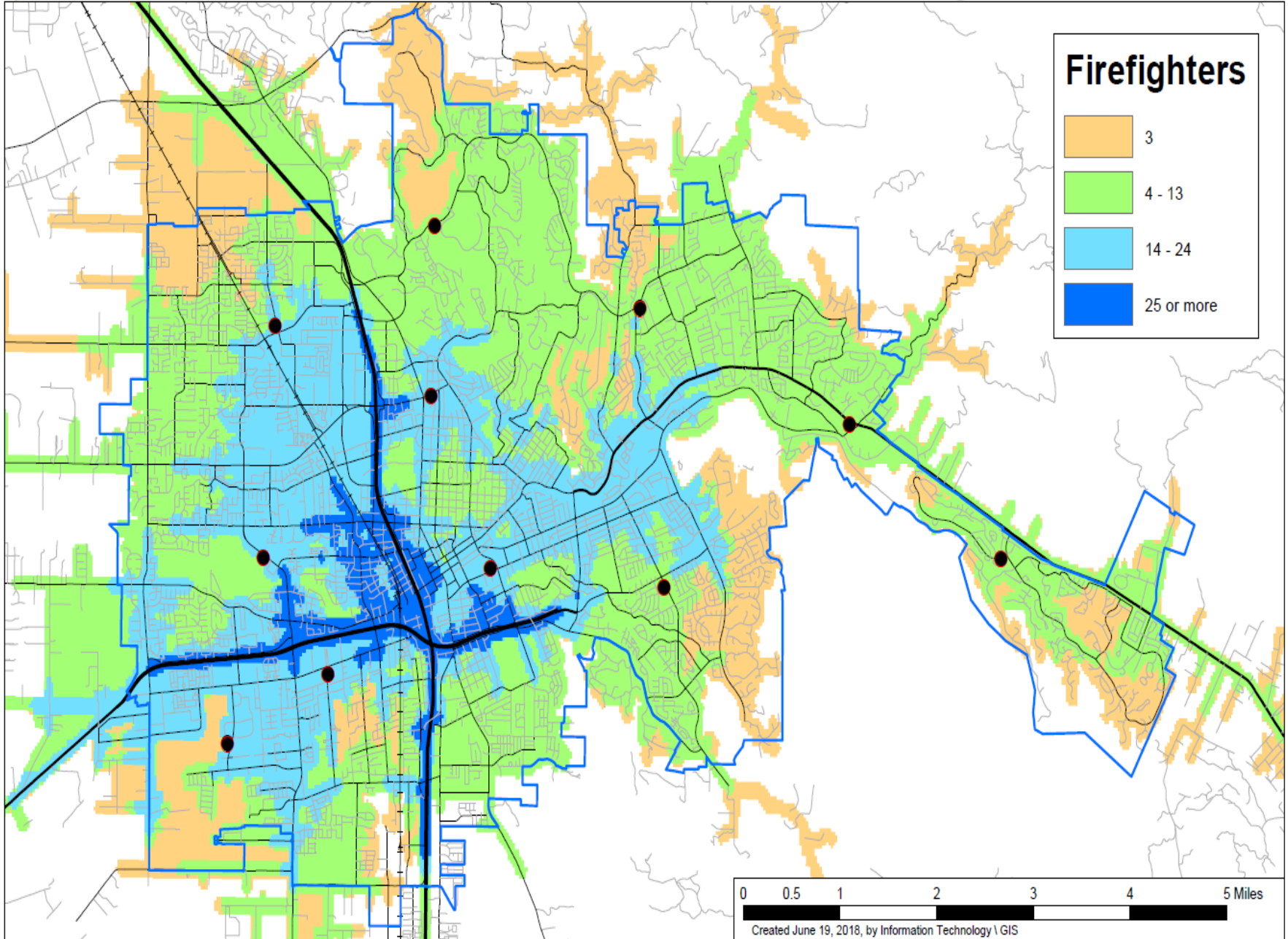
Lower Fountaingrove, Mission & Los Alamos



Station 6 - Mission & Los Alamos



7 Minute Effective Fire Force with 14 Firefighters



RECOMMENDATION

It is recommended by the Fire Department that the Council approve staff to evaluate fire station location options that will best serve the Fountaingrove Area.

QUESTIONS?