



SMALL CAFE TERRACE/PATIO



RESTING POINTS WITH BENCHES



STAMPED ASPHALT



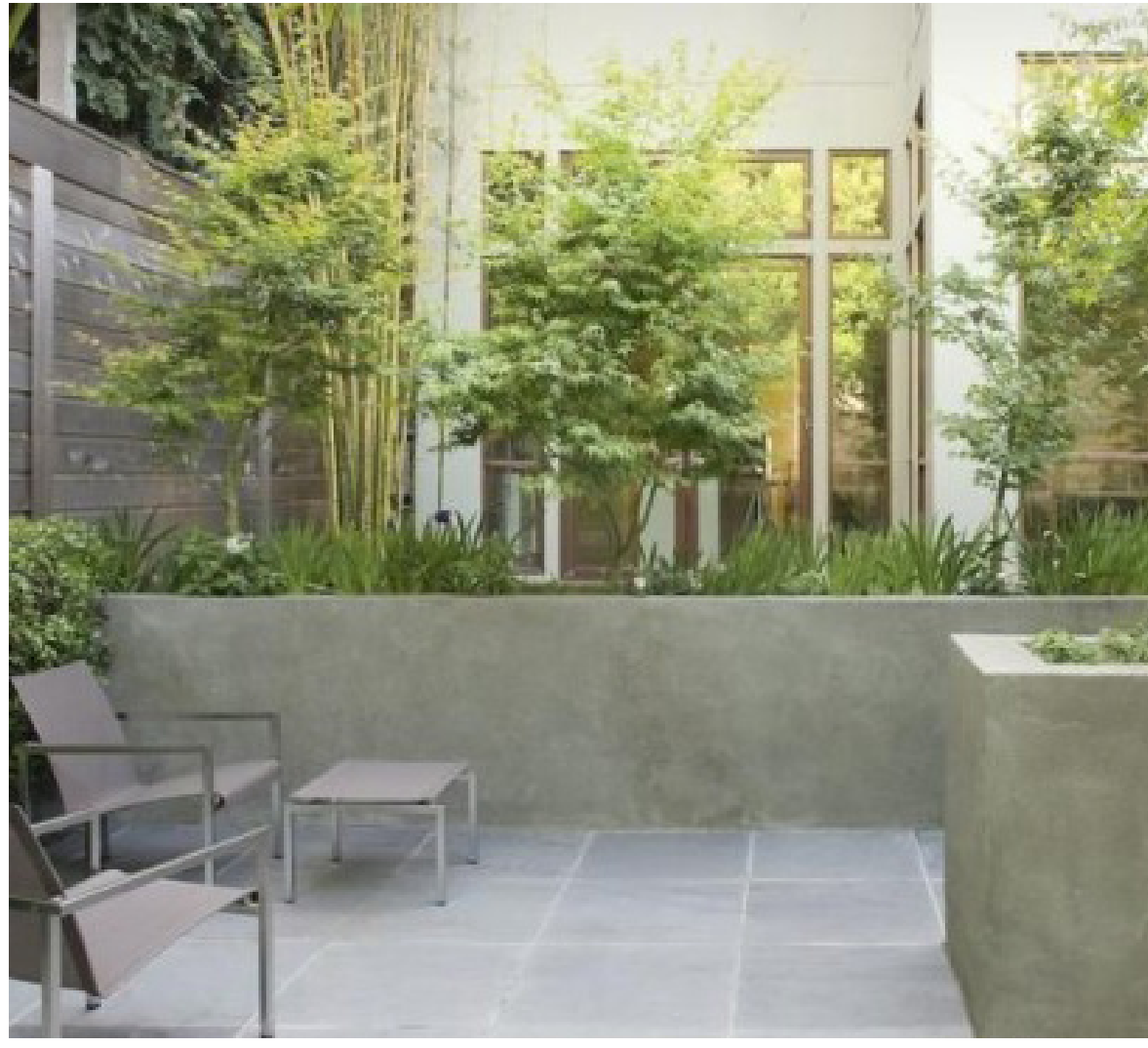
PERMEABLE GRANITECRETE PAVING



GAZEBO AREA AND TRELLIS IN COURTYARD



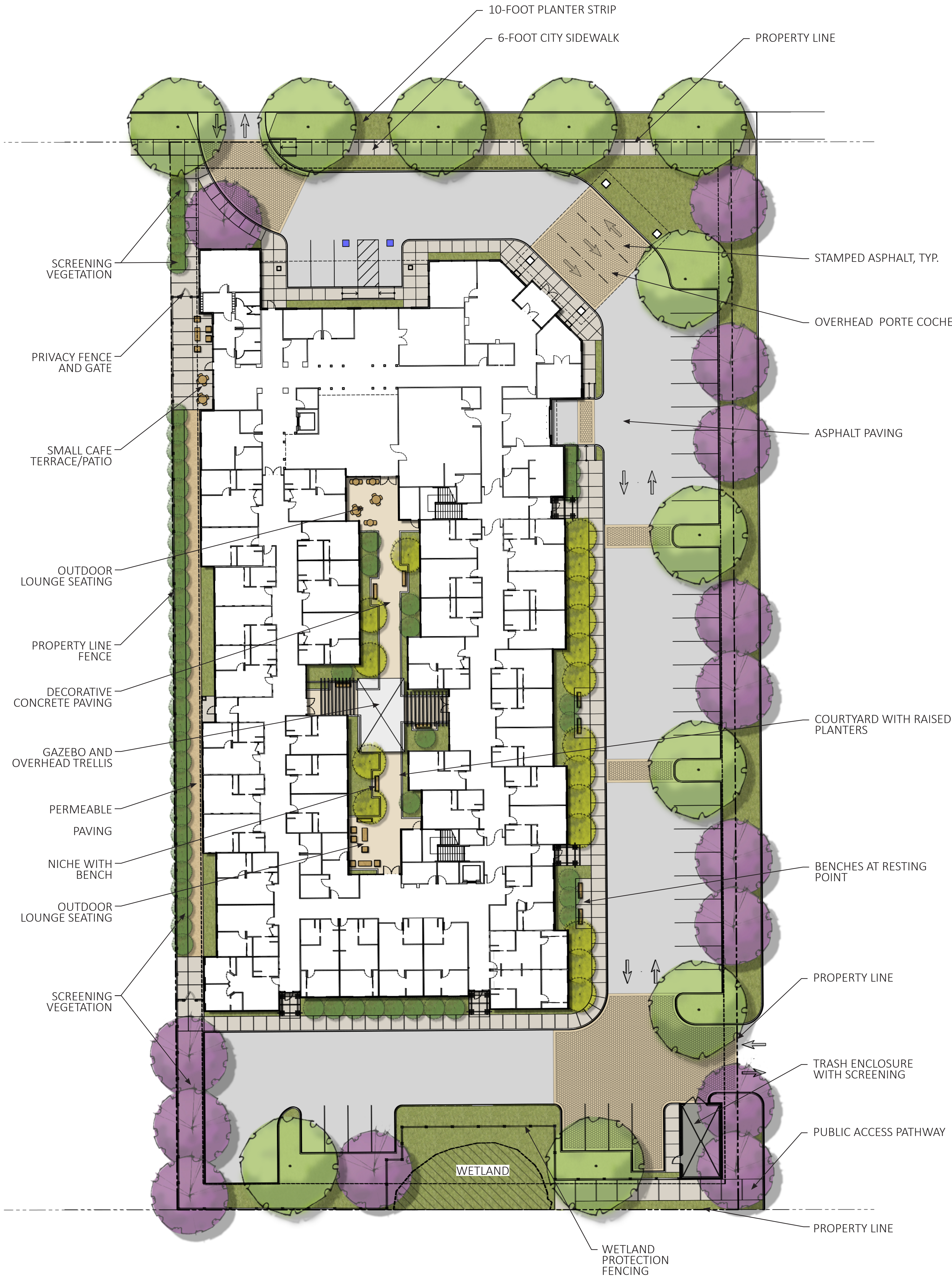
PROPERTY LINE FENCE



COURTYARD WITH RAISED PLANTERS



WETLAND PROTECTION FENCING



PRELIMINARY PLANT LIST		
SYMBOL	BOTANICAL NAME	COMMON NAME
TREES		
	ACER MACROPHYLLUM	BIGLEAF MAPLE
	PLATANUS ACERIFOLIA 'COLUMBIA'	LONDON PLANE TREE
	QUERCUS AGRIFOLIA	COAST LIVE OAK
FLOWERING ACCENT TREES		
	LAGERSTROEMIA 'MUSKOGEE'	LAVENDER CRAPE MYRTLE
	CERCIS CANADENSIS 'FOREST PANSY'	FOREST PANSY REDBUD
SCREEN SHRUBS		
	ARCTOSTAPHYLOS 'HOWARD McMINN'	MANZANITA
	CEANOTHUS RAY HARTMAN	RAY HARTMAN WILD LILAC
	PRUNUS ILICIFOLIA	CATALINA CHERRY
SHRUBS & GRASSES		
	KNIPHOFIA UVARIA 'BLAZE'	RED HOT POKER
	LIBERTIA PEREGRINANS	ORANGE LIBERTIA
	LIMONIUM PEREZII	SEA LAVENDER
	ROSA 'SEA FOAM'	GROUNDCOVER ROSE
	ROSMARINUS 'TUSCAN BLUE'	ROSEMARY
GROUNDCOVERS		
	ARCTOSTAPHYLOS 'EMERALD CARPET'	MANZANITA
	MAHONIA REPENS	CREEPING MAHONIA
VINES		
	DISTICTIS BUCCINATORIA	BLOOD RED TRUMPET VINE
	HARDENBERGIA VIOLACEA	PURPLE VINE LILAC
STORMWATER		
	CAREX DIVULSA	BERKELEY SEDGE
	CHONDROPETALUM TECTORUM	CAPE RUSH
	LOMANDRA LONGIFOLIA 'BREEZE'	DWARF MAT RUSH
	SISYRINCHIUM BELLUM 'NORTH COAST'	BLUE-EYED GRASS

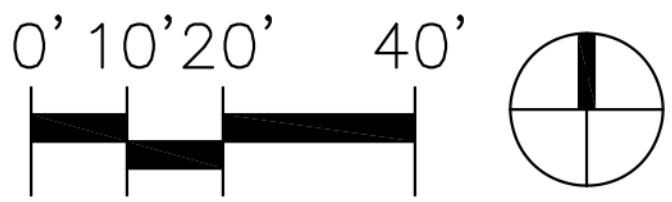
- WATER EFFICIENT NOTES
1. ALL PLANTING AND IRRIGATION SHALL BE IN FULL COMPLIANCE WITH CITY WATER EFFICIENT LANDSCAPING ORDINANCES AND OTHER APPLICABLE CODES AND ORDINANCES.
 2. IRRIGATION AT ALL LOW & MIXED WATER USE HYDROZONES TO USE WATER CONSERVING LOW-FLOW IRRIGATION HEADS OR DRIP TUBING.
 3. TREES SHALL BE ON A VALVE CIRCUIT INDEPENDENT OF ALL OTHER PLANTING.
 4. IRRIGATION CONTROLLER MODEL SHALL UTILIZE EVAPOTRANSPIRATION DATA AND RAIN SENSOR DATA TO AUTOMATICALLY ADJUST WATERING SCHEDULES.
 5. IRRIGATION EQUIPMENT SHALL INCLUDE A MANUAL SHUT-OFF VALVE AND BACKFLOW PREVENTION DEVICE.
 6. IRRIGATION SCHEDULE TO BE DEVELOPED AND MANAGED TO UTILIZE THE MINIMUM AMOUNT OF WATER REQUIRED TO MAINTAIN PLANT HEALTH.

LANDSCAPE CONCEPT PLAN

PINER ROAD ASSISTED LIVING RESIDENCE
PINER ROAD
SANTA ROSA, CALIFORNIA

DATED: 08/15/18
M:\PROJECTS\PINER ROAD\AUTOCAD\LANDSCAPE\CONCEPT PLAN\DWG 8/15/2018 5:32 PM BY DAVID FLORES

HWA HILTON WILLIAMS ARCHITECTS
7801 Folsom Blvd, Suite 110 Sacramento, CA 95826
Ph: 916.448.2724 Fx: 916.448.4991
ARCHITECTURE PLANNING INTERIORS



SHEET NO. L1.01

JOB NO. SRA-18004