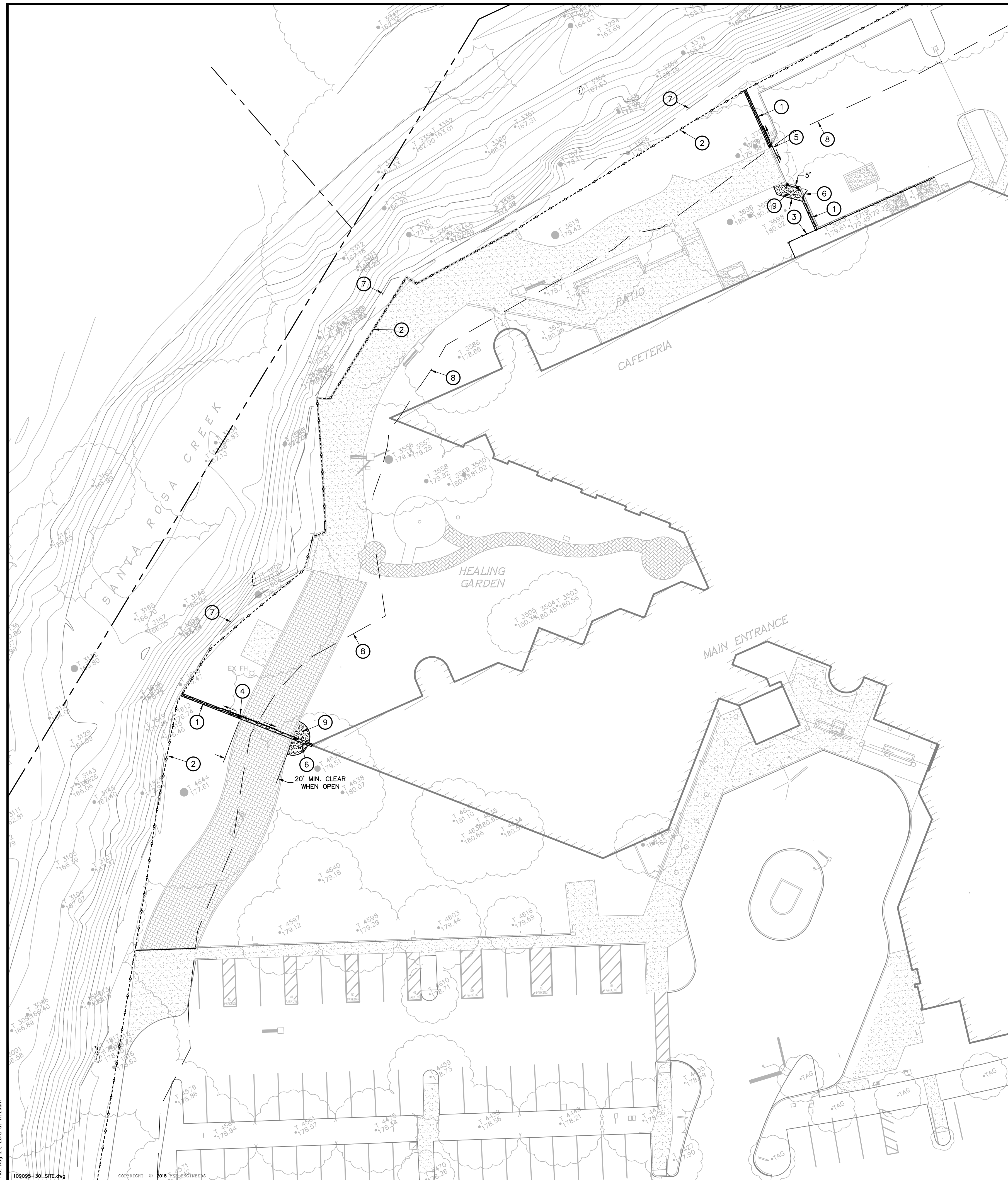


SANTA ROSA MEMORIAL HOSPITAL
APN 009-161-003
1165 MONTGOMERY DR., SANTA ROSA, CA

EMERGENCY VEHICLE ACCESS GATE AND FENCE INSTALLATION

| | | | |
|---------------------|--|--|--|
| Scale: AS SHOWN | | | |
| Design: RFC | | | |
| Drawn: RFC | | | |
| Approved: RFC | | | |
| Job No: 20109095-30 | | | |

rawing Number:
C1
1 OF **1**



PROJECT LOCATION MAP



6' High Ornamental Iron Fence
(Existing and Proposed)

KEYNOTES:

- ① 6' high ornamental iron fence
- ② Existing 6' high ornamental iron fence
- ③ Existing 6' high chain link fence with vertical pickets
- ④ 20' opening slide gate including the following:
 - Viking H-10 operator with built in battery backup with solar power option
 - Fire Strobe 2000 EVA access device
 - Photo eyes for additional safety required by UL safety code
 - Knox fire key switch
 - Powder coated steel gate with vertical pickets. All gate rollers wheels and ground track
- ⑤ 15' opening slide gate including the following:
 - Viking H-10 operator with built in battery backup with solar power option
 - Fire strobe 2000 EVA access device
 - Photo eyes for additional safety
 - Knox Fire key switch
 - Powder coated steel gate with vertical pickets. All gate rollers wheels and ground track
- ⑥ 3' opening walk gates
 - Powder coated steel frame gates with vertical pickets. Perforated metal panels to protect latch from exterior side of gate. Side panel of fence to receive perforated metal panel to prevent reach to latch.
 - Sure Close self-closing hydraulic hinges to meet ADA requirement.
 - Cal Royal 77 Series panic bar latches with exterior lever trim.
- ⑦ Existing Creek Top of Bank
- ⑧ 30' Creek Setback Line from Top of Bank
- ⑨ Install concrete path. Remove shrub landscaping and adjust irrigation as necessary.

