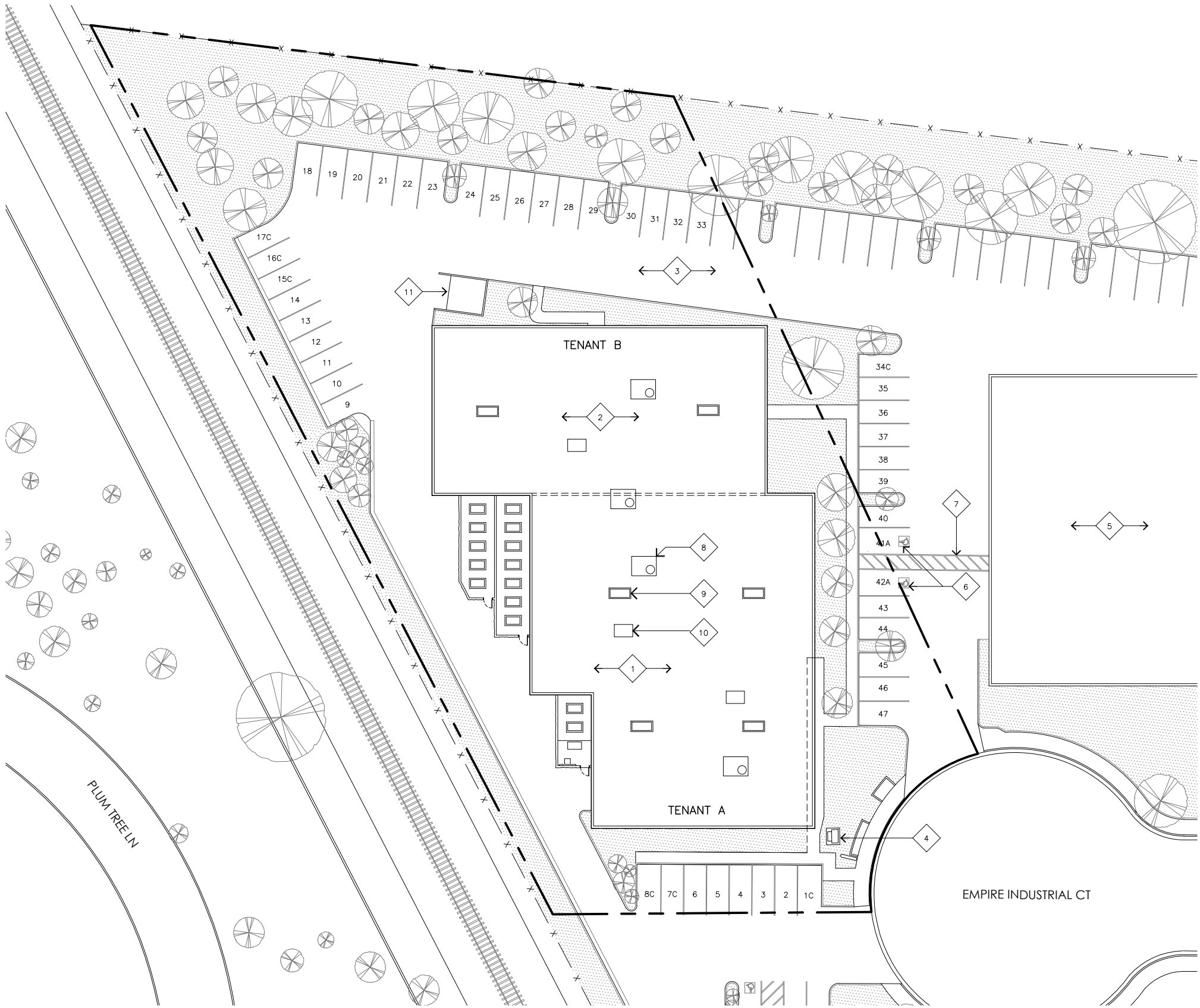


SITE PLAN KEYNOTES

- 1
- PROPOSED LEASE AREA; SEE SHEET A-1.
- 2
- (E) ADJACENT LEASE AREA.
- 3
- (E) PARKING LOT.
- 4
- (E) ELECTRICAL TRANSFORMER TO BE REPLACED.
- 5
- (E) ADJACENT BUILDING.
- 6
- (E) (2) ACCESSIBLE PARKING STALLS WITH ACCESSIBLE SIGNAGE.
- 7
- (E) ACCESSIBLE PATH STRIPING.
- 8
- (E) MECHANICAL EQUIPMENT TYPICAL.
- 9
- (E) SKYLIGHT TYPICAL.
- 10
- (E) ROOF VENT TYPICAL.
- 11
- (E) TRASH ENCLOSURE.

PARKING ANALYSIS

TENANT A:				
DISPENSARY (RETAIL)		1,000	SQ. FT.	
REQUIRED PARKING:	1 STALL/PER	250	SQ. FT.	= 4 STALLS
CULTIVATION		9,400	SQ. FT.	
REQUIRED PARKING:	1 STALL/PER	1,000	SQ. FT.	= 10 STALLS
TENANT B:				
MANUFACTURING		6,000	SQ. FT.	
REQUIRED PARKING:	1 STALL/PER	1,000	SQ. FT.	= 18 STALLS
DISTRIBUTION		700	SQ. FT.	
REQUIRED PARKING:	1 STALL/PER	350	SQ. FT.	= 4 STALLS
TOTAL PARKING REQUIRED:				= 36 STALLS
PARKING PROVIDED:				
STANDARD				= 38 STALLS
COMPACT				= 7 STALLS
ACCESSIBLE				= 2 STALLS
TOTAL PARKING PROVIDED:				= 47 STALLS



SITE PLAN

11X17 SCALE: 1"=40'
24X36 SCALE: 1"=20'

1

WINGARD

Jeffrey Rome |
ASSOCIATES

architecture | telecommunications
131 Innovation Drive, Suite 100
Irvine, California 92617
tel 949.760.3929 | fax 949.760.3931

PROPRIETARY INFORMATION

THE INFORMATION CONTAINED IN THIS SET OF CONSTRUCTION DOCUMENTS IS PROPRIETARY BY NATURE. ANY USE OR DISCLOSURE OTHER THAN THAT WHICH RELATES TO JEFFREY ROME AND ASSOCIATES IS STRICTLY PROHIBITED.

APPROVALS

TENANT

LANDLORD

PROJECT NAME

SONOMA CHO DISPENSARY

1825 EMPIRE INDUSTRIAL COURT
SANTA ROSA, CALIFORNIA 95403

DRAWING DATES
08/01/18 90% CD'S (P1-B1)

SHEET TITLE

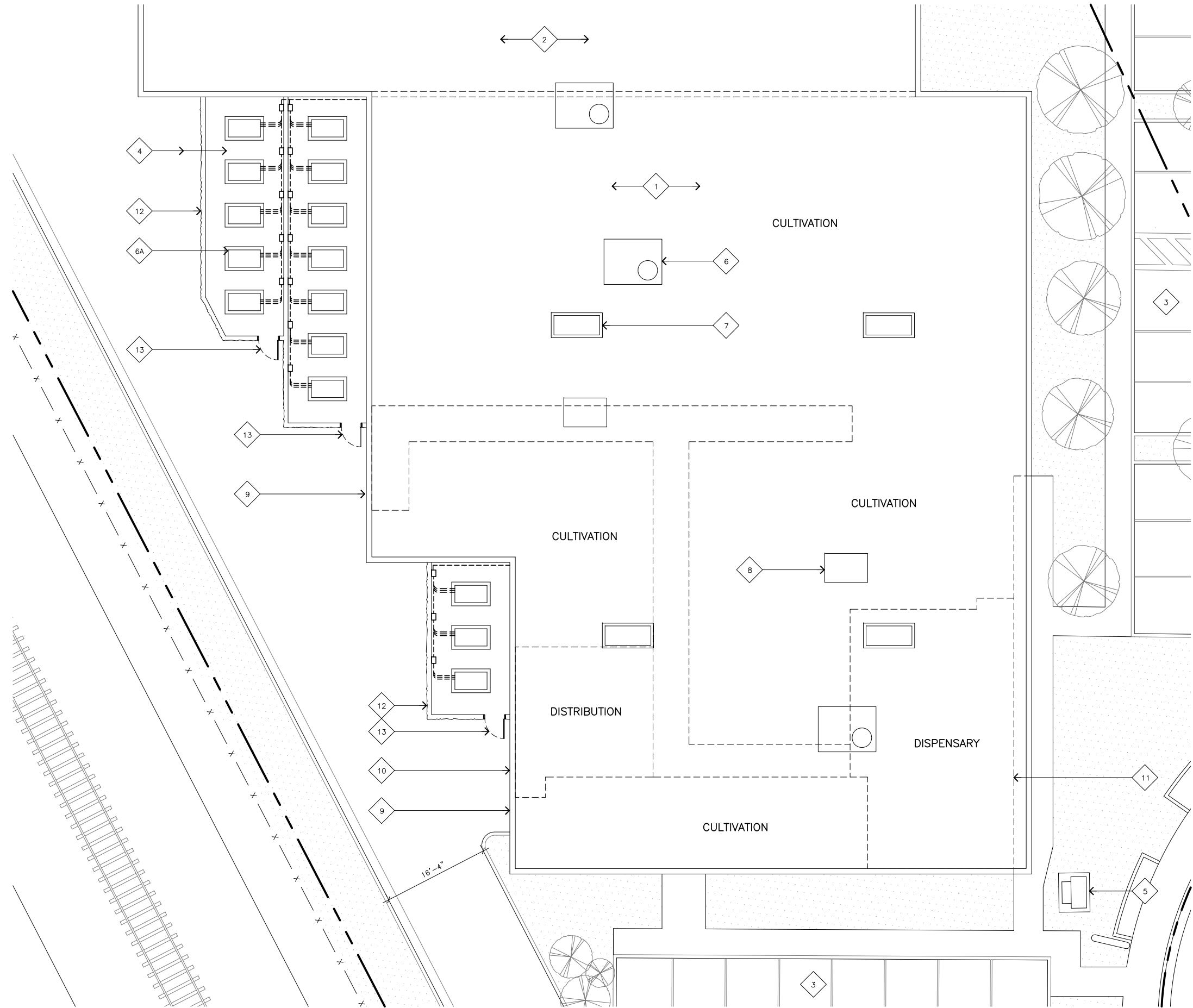
SITE PLAN

A-0

JRA JOB NUMBER: 180610

ENLARGED SITE PLAN KEYNOTES

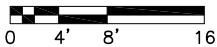
- 1
- PROPOSED LEASE AREA; SEE SHEET A-2.
- 2
- (E) ADJACENT LEASE AREA.
- 3
- (E) PARKING LOT.
- 4
- (E) ASPHALT AREA; RE-WORK AS NEEDED.
- 5
- PROPOSED ELECTRICAL TRANSFORMER TO REPLACE (E) ELECTRICAL TRANSFORMER.
- 6
- (E) MECHANICAL EQUIPMENT TYPICAL.
- 6A
- PROPOSED MECHANICAL EQUIPMENT ON NEW CONCRETE PAD; SEE MECHANICAL PLAN.
- 7
- (E) SKYLIGHT TYPICAL.
- 8
- (E) ROOF VENT TYPICAL.
- 9
- PROPOSED LEASE AREA EXIT DOORS.
- 10
- PROPOSED LEASE AREA DELIVERY ROLL UP DOOR.
- 11
- PROPOSED ENTRANCE TO DISPENSARY.
- 12
- PROPOSED 8'-0" SPLIT FACE CONCRETE WALL; SEE SHEET A-6.
- 13
- PROPOSED 8'-0" X 3'-0" METAL GATE; SEE SHEET A-6.



ENLARGED SITE PLAN



11x17 SCALE: 1/16"=1'-0"
24x36 SCALE: 1/8"=1'-0"



1

FLORA TERRA

Jeffrey Rome | ASSOCIATES

architecture | telecommunications
131 Innovation Drive, Suite 100
Irvine, California 92617
tel 949.760.3929 | fax 949.760.3931

PROPRIETARY INFORMATION

THE INFORMATION CONTAINED IN THIS SET OF CONSTRUCTION DOCUMENTS IS PROPRIETARY BY NATURE. ANY USE OR DISCLOSURE OTHER THAN THAT WHICH RELATES TO JEFFREY ROME AND ASSOCIATES IS STRICTLY PROHIBITED.

APPROVALS

TENANT

LANDLORD

PROJECT NAME

FLORA TERRA

1825 EMPIRE INDUSTRIAL COURT
SANTA ROSA, CALIFORNIA 95403

DRAWING DATES

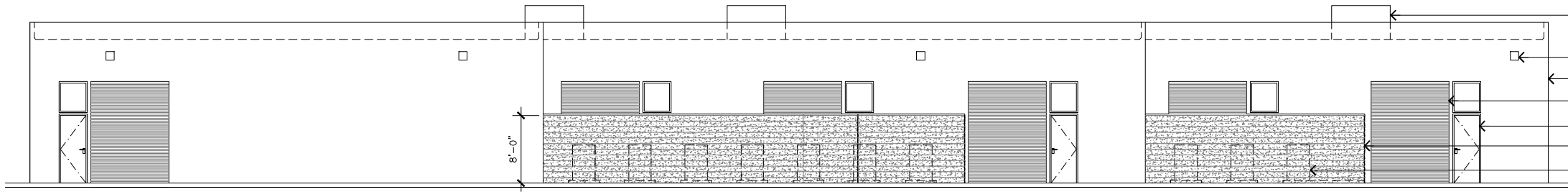
08/01/18 90% CD'S (P1-B1)
09/15/18 100% CD'S (P1-B2)

SHEET TITLE

ENLARGED
SITE PLAN

A-1

JRA JOB NUMBER: 180610



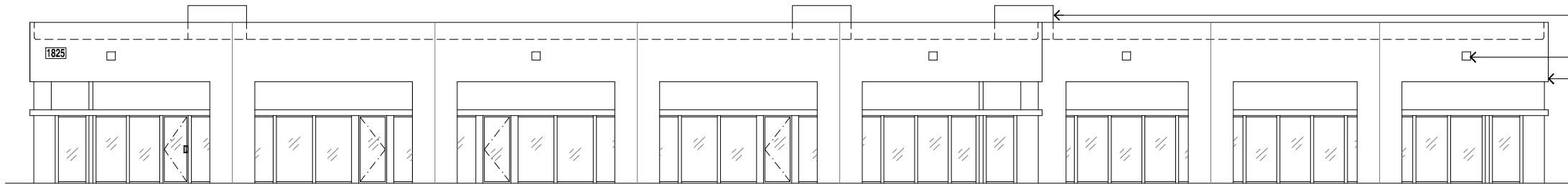
- (E) ROOFTOP EQUIPMENT.
- (E) EXTERIOR LIGHTS.
- (E) CONCRETE BUILDING.
- (E) ROLL UP DOOR.
- (E) DOOR.
- PROPOSED EQUIPMENT ENCLOSURE.
- PROPOSED MECHANICAL EQUIPMENT.

WEST EXTERIOR ELEVATION

SCALE:
1/8"=1'-0"



4



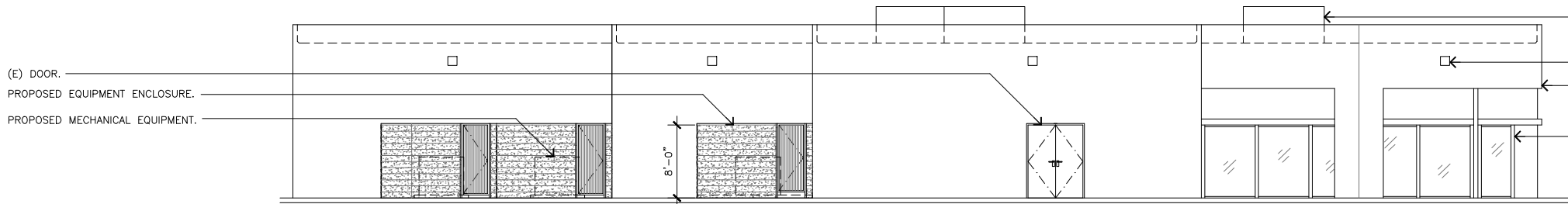
- (E) ROOFTOP EQUIPMENT.
- (E) EXTERIOR LIGHTS.
- (E) CONCRETE BUILDING.

EAST EXTERIOR ELEVATION

SCALE:
1/8"=1'-0"



3

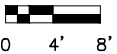


- (E) DOOR.
- PROPOSED EQUIPMENT ENCLOSURE.
- PROPOSED MECHANICAL EQUIPMENT.

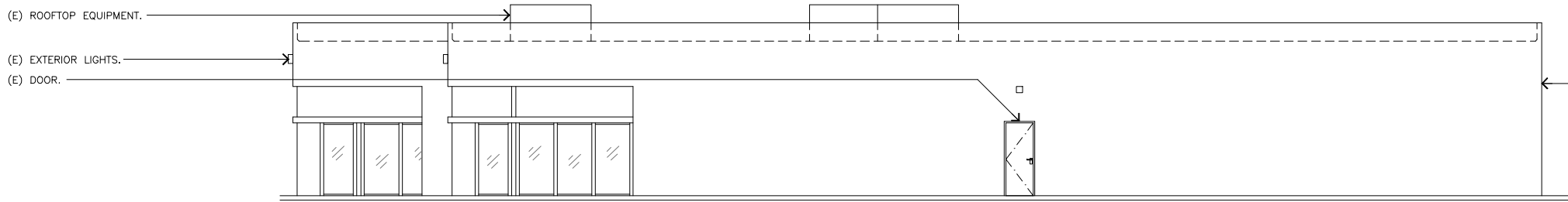
- (E) ROOFTOP EQUIPMENT.
- (E) EXTERIOR LIGHTS.
- (E) CONCRETE BUILDING.
- (E) STOREFRONT.

SOUTH EXTERIOR ELEVATION

SCALE:
1/8"=1'-0"



2



- (E) ROOFTOP EQUIPMENT.
- (E) EXTERIOR LIGHTS.
- (E) DOOR.

- (E) CONCRETE BUILDING.

NORTH EXTERIOR ELEVATION

SCALE:
1/8"=1'-0"



1

WINGARD

Jeffrey Rome | ASSOCIATES
architecture | telecommunications
131 Innovation Drive, Suite 100
Irvine, California 92617
tel 949.760.3929 | fax 949.760.3931

PROPRIETARY INFORMATION

THE INFORMATION CONTAINED IN THIS SET OF CONSTRUCTION DOCUMENTS IS PROPRIETARY BY NATURE. ANY USE OR DISCLOSURE OTHER THAN THAT WHICH RELATES TO JEFFREY ROME AND ASSOCIATES IS STRICTLY PROHIBITED.

APPROVALS

TENANT

LANDLORD

PROJECT NAME

SONOMA CHO DISPENSARY

1825 EMPIRE INDUSTRIAL COURT
SANTA ROSA, CALIFORNIA 95403

DRAWING DATES

08/01/18 90% CD'S (P1-B1)

SHEET TITLE

EXTERIOR ELEVATIONS

A-4.4

JRA JOB NUMBER: 180610