

ROUND BARN VILLAGE

— SANTA ROSA 6 —

PRELIMINARY DESIGN REVIEW EXTERIOR COLOR/MATERIAL DESIGN

NOVEMBER 5, 2018



AT DESIGN CONSULTING, INC
2211 Michelson Drive Suite 450 Irvine, CA 92612
P: 949.724.1619 WWW.ATDESIGNCONSULTING.COM



Exterior Color + Material Specifications

These color / material specifications and creative design concepts are the intellectual property of AT Design Consulting, a California Corporation.

This creative work is privileged, confidential, and exempt from disclosure under applicable law. The use of these materials is restricted.

These materials are intended for the use within this specific project only during the course of development and may not be used for any other reason without the expressed written authorization of AT Design Consulting, Inc.

AT Design Consulting, Inc. is responsible for aesthetic choices. All colors and materials listed are for color purposes only. Manufacturer for all products will be designated and appointed by Client.

All unauthorized use, dissemination, distribution, or reproduction of these materials is strictly prohibited. Any unauthorized use, dissemination, distribution or reproductions will be prosecuted to the full extent of the law.

© AT Design Consulting, Inc.

SITE PLAN	4
ELEVATION PLOTTING	5
COLOR SCHEME POTTING	6
PAINT & MISCELLANEOUS ITEMS	17
EXTERIOR COLOR/MATERIAL SPECIFICATIONS	8
Scheme 1	8
Scheme 2	17
Scheme 3	26
Scheme 4	35
EXTERIOR FIXTURE SPECIFICATIONS	44
Exterior Light Fixtures	44
Address Numbers	46








= Color Scheme Number

■ = Models

PAINT MANUFACTURER	All paint to be Sherwin Williams, unless otherwise stated differently.
PAINT APPLICATION	<u>Typical, all paint colors should finish in inside corners.</u> Fascia boards, overhangs, eaves, headers, etc. should be painted their specifically designated colors with the color being applied on all sides of each item, including the undersides.
NON-DECORATIVE ITEMS	All non-decorative items such as meter doors, non-decorative vents, etc. to be painted the same color as the adjacent field color.

SCHEME 1

	ITEM		MANUFACTURER	COLOR & NAME
	Body 1 (stucco)		Omega Products International (to match Sherwin Williams paint)	10 (7757, High Reflective White)
	Body 2 (stucco)		Omega Products International (to match Sherwin Williams paint)	1154 (7542, Naturel)
	Body 3 (siding & roof access ladder)		Sherwin Williams	7053, Adaptive Shade
	Accent Body		Sherwin Williams	6171, Chatroom
	Trim (Wood Trims, Fascias, Window/Door Trim, Posts, Beams, Brackets, Corbels, Etc.)		Sherwin Williams	7757, High Reflective White
	Entry Door		Sherwin Williams	7069, Iron Ore
Pre-Coated Colors from Manufacturer	Downspouts & Scuppers		<i>Paint to match adjacent Body color</i>	
	Garage Doors		Wayne Dalton	TBD
	Windows		Milgard	White
	Decking		UPI (Urethane Polymers International)	Castle Gray
	Roof - Asphalt Shingle		Certainteed: Landmark	Moire Black
Stone	Stone		Eldorado Stone: Cut Coarse	Custom #1496
	Stone Layup		<p>Bonding Surface: All surfaces must be clean, free of any dirt, loose debris to create an even and flat surface for stone installation.</p> <p>Stone Lay-Up: Dry-stack stones in a tight horizontal orientation.</p> <p>Stone Joints: Mortar to be used for levelling and adhering purposes only. Mortar should not be visible and stone shadows should read strong.</p> <p>Stone Face: Stone face should remain clean, not mortar washed or sponged. DO NOT cover stone face with mortar.</p> <p><i>See sample image to left.</i></p>	

SCHEME 1



ROUND BARN VILLAGE

SANTA ROSA 6

EXTERIOR COLOR/MATERIAL DESIGN

City Ventures

AT DESIGN
CONSULTING



Elevation A

COLORS MAY VARY DUE TO SCREEN RESOLUTION AND OR ON PRINTED MATERIAL. REFER TO ACTUAL PAINT CHIPS AND MATERIALS FOR COLOR ACCURACY.



Elevation B

COLORS MAY VARY DUE TO SCREEN RESOLUTION AND OR ON PRINTED MATERIAL. REFER TO ACTUAL PAINT CHIPS AND MATERIALS FOR COLOR ACCURACY.

ROUND BARN VILLAGE

SANTA ROSA 6

EXTERIOR COLOR/MATERIAL DESIGN





Elevation C

COLORS MAY VARY DUE TO SCREEN RESOLUTION AND OR ON PRINTED MATERIAL. REFER TO ACTUAL PAINT CHIPS AND MATERIALS FOR COLOR ACCURACY.

Elevation Color Rendering

BUILDING 400 - Scheme 1

PRELIMINARY DESIGN REVIEW - 11/05/18 | 13



FRONT

Elevation C

COLORS MAY VARY DUE TO SCREEN RESOLUTION AND OR ON PRINTED MATERIAL. REFER TO ACTUAL PAINT CHIPS AND MATERIALS FOR COLOR ACCURACY.

ROUND BARN VILLAGE

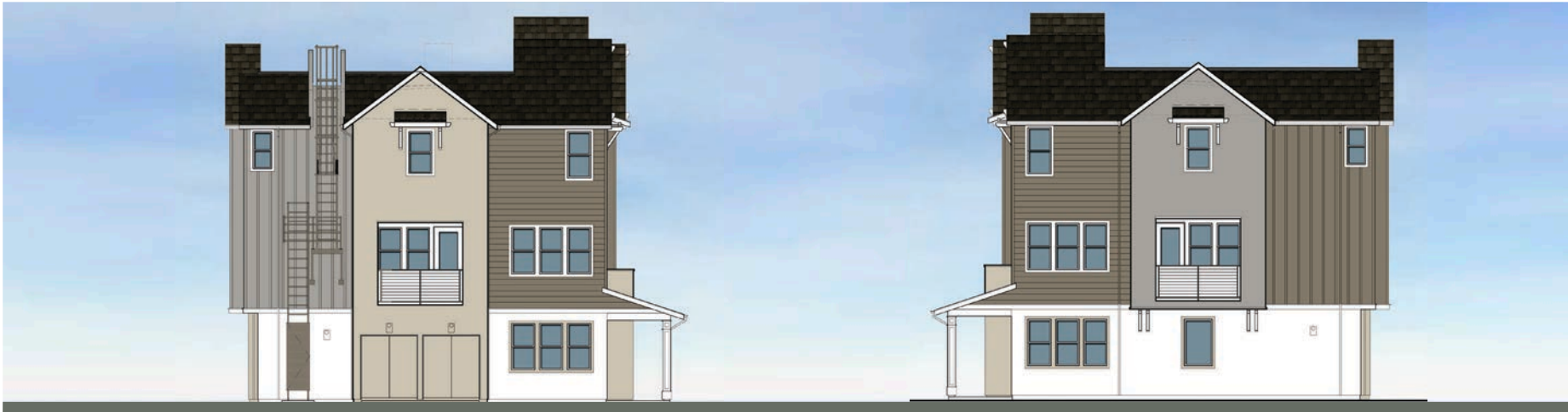
SANTA ROSA 6

EXTERIOR COLOR/MATERIAL DESIGN





REAR



LEFT

RIGHT

Elevation C

COLORS MAY VARY DUE TO SCREEN RESOLUTION AND OR ON PRINTED MATERIAL. REFER TO ACTUAL PAINT CHIPS AND MATERIALS FOR COLOR ACCURACY.



FRONT

Elevation B

COLORS MAY VARY DUE TO SCREEN RESOLUTION AND OR ON PRINTED MATERIAL. REFER TO ACTUAL PAINT CHIPS AND MATERIALS FOR COLOR ACCURACY.



REAR




LEFT

RIGHT

Elevation B

COLORS MAY VARY DUE TO SCREEN RESOLUTION AND OR ON PRINTED MATERIAL. REFER TO ACTUAL PAINT CHIPS AND MATERIALS FOR COLOR ACCURACY.

SCHEME 2

	ITEM		MANUFACTURER	COLOR & NAME
	Body 1 (stucco)		Omega Products International (to match Sherwin Williams paint)	10 (7757, High Reflective White)
	Body 2 (stucco)		Omega Products International (to match Sherwin Williams paint)	1154 (7542, Naturel)
	Body 3 (siding & roof access ladder)		Sherwin Williams	7622, Homburg Gray
	Accent Body		Sherwin Williams	6123, Baguette
	Trim (Wood Trims, Fascias, Window/Door Trim, Posts, Beams, Brackets, Corbels, Etc.)		Sherwin Williams	7757, High Reflective White
	Entry Door		Sherwin Williams	7069, Iron Ore
Pre-Coated Colors from Manufacturer	Downspouts & Scuppers		<i>Paint to match adjacent Body color</i>	
	Garage Doors		Wayne Dalton	TBD
	Windows		Milgard	White
	Decking		UPI (Urethane Polymers International)	Castle Gray
	Roof - Asphalt Shingle		Certainteed: Landmark	Moire Black
Stone	Stone		Eldorado Stone: Cut Coarse	Custom #1496
	Stone Layup		<p>Bonding Surface: All surfaces must be clean, free of any dirt, loose debris to create an even and flat surface for stone installation.</p> <p>Stone Lay-Up: Dry-stack stones in a tight horizontal orientation.</p> <p>Stone Joints: Mortar to be used for levelling and adhering purposes only. Mortar should not be visible and stone shadows should read strong.</p> <p>Stone Face: Stone face should remain clean, not mortar washed or sponged. DO NOT cover stone face with mortar.</p> <p><i>See sample image to left.</i></p>	

SCHEME 2



ROUND BARN VILLAGE

SANTA ROSA 6

EXTERIOR COLOR/MATERIAL DESIGN

City Ventures

AT DESIGN
CONSULTING



Elevation A

COLORS MAY VARY DUE TO SCREEN RESOLUTION AND OR ON PRINTED MATERIAL. REFER TO ACTUAL PAINT CHIPS AND MATERIALS FOR COLOR ACCURACY.



Elevation B

COLORS MAY VARY DUE TO SCREEN RESOLUTION AND OR ON PRINTED MATERIAL. REFER TO ACTUAL PAINT CHIPS AND MATERIALS FOR COLOR ACCURACY.

ROUND BARN VILLAGE

SANTA ROSA 6

EXTERIOR COLOR/MATERIAL DESIGN





Elevation C

COLORS MAY VARY DUE TO SCREEN RESOLUTION AND OR ON PRINTED MATERIAL. REFER TO ACTUAL PAINT CHIPS AND MATERIALS FOR COLOR ACCURACY.



FRONT

Elevation C

COLORS MAY VARY DUE TO SCREEN RESOLUTION AND OR ON PRINTED MATERIAL. REFER TO ACTUAL PAINT CHIPS AND MATERIALS FOR COLOR ACCURACY.

ROUND BARN VILLAGE

SANTA ROSA 6

EXTERIOR COLOR/MATERIAL DESIGN





REAR



LEFT

RIGHT

Elevation C

COLORS MAY VARY DUE TO SCREEN RESOLUTION AND OR ON PRINTED MATERIAL. REFER TO ACTUAL PAINT CHIPS AND MATERIALS FOR COLOR ACCURACY.

ROUND BARN VILLAGE

SANTA ROSA 6

EXTERIOR COLOR/MATERIAL DESIGN





FRONT

Elevation B

COLORS MAY VARY DUE TO SCREEN RESOLUTION AND OR ON PRINTED MATERIAL. REFER TO ACTUAL PAINT CHIPS AND MATERIALS FOR COLOR ACCURACY.



REAR




LEFT

RIGHT

Elevation B

COLORS MAY VARY DUE TO SCREEN RESOLUTION AND OR ON PRINTED MATERIAL. REFER TO ACTUAL PAINT CHIPS AND MATERIALS FOR COLOR ACCURACY.

SCHEME 3

	ITEM		MANUFACTURER	COLOR & NAME
	Body 1 (stucco)		Omega Products International (to match Sherwin Williams paint)	10 (7757, High Reflective White)
	Body 2 (stucco)		Omega Products International (to match Sherwin Williams paint)	1154 (7542, Naturel)
	Body 3 (siding & roof access ladder)		Sherwin Williams	7046, Anonymous
	Accent Body		Sherwin Williams	6214, Underseas
	Trim (Wood Trims, Fascias, Window/Door Trim, Posts, Beams, Brackets, Corbels, Etc.)		Sherwin Williams	7757, High Reflective White
	Entry Door		Sherwin Williams	7069, Iron Ore
Pre-Coated Colors from Manufacturer	Downspouts & Scuppers		<i>Paint to match adjacent Body color</i>	
	Garage Doors		Wayne Dalton	TBD
	Windows		Milgard	White
	Decking		UPI (Urethane Polymers International)	Castle Gray
	Roof - Asphalt Shingle		Certainteed: Landmark	Moire Black
Stone	Stone		Eldorado Stone: Cut Coarse	Custom #1496
	Stone Layup		<p>Bonding Surface: All surfaces must be clean, free of any dirt, loose debris to create an even and flat surface for stone installation.</p> <p>Stone Lay-Up: Dry-stack stones in a tight horizontal orientation.</p> <p>Stone Joints: Mortar to be used for levelling and adhering purposes only. Mortar should not be visible and stone shadows should read strong.</p> <p>Stone Face: Stone face should remain clean, not mortar washed or sponged. DO NOT cover stone face with mortar.</p> <p><i>See sample image to left.</i></p>	

SCHEME 3



ROUND BARN VILLAGE

SANTA ROSA 6

EXTERIOR COLOR/MATERIAL DESIGN





Elevation A

COLORS MAY VARY DUE TO SCREEN RESOLUTION AND OR ON PRINTED MATERIAL. REFER TO ACTUAL PAINT CHIPS AND MATERIALS FOR COLOR ACCURACY.



Elevation B

COLORS MAY VARY DUE TO SCREEN RESOLUTION AND OR ON PRINTED MATERIAL. REFER TO ACTUAL PAINT CHIPS AND MATERIALS FOR COLOR ACCURACY.



Elevation C

COLORS MAY VARY DUE TO SCREEN RESOLUTION AND OR ON PRINTED MATERIAL. REFER TO ACTUAL PAINT CHIPS AND MATERIALS FOR COLOR ACCURACY.

ROUND BARN VILLAGE

SANTA ROSA 6

EXTERIOR COLOR/MATERIAL DESIGN





FRONT

Elevation C

COLORS MAY VARY DUE TO SCREEN RESOLUTION AND OR ON PRINTED MATERIAL. REFER TO ACTUAL PAINT CHIPS AND MATERIALS FOR COLOR ACCURACY.



REAR



LEFT

RIGHT

Elevation C

COLORS MAY VARY DUE TO SCREEN RESOLUTION AND OR ON PRINTED MATERIAL. REFER TO ACTUAL PAINT CHIPS AND MATERIALS FOR COLOR ACCURACY.



FRONT

Elevation B

COLORS MAY VARY DUE TO SCREEN RESOLUTION AND OR ON PRINTED MATERIAL. REFER TO ACTUAL PAINT CHIPS AND MATERIALS FOR COLOR ACCURACY.



REAR




LEFT

RIGHT

Elevation B

COLORS MAY VARY DUE TO SCREEN RESOLUTION AND OR ON PRINTED MATERIAL. REFER TO ACTUAL PAINT CHIPS AND MATERIALS FOR COLOR ACCURACY.

SCHEME 4

	ITEM		MANUFACTURER	COLOR & NAME
	Body 1 (stucco)		Omega Products International (to match Sherwin Williams paint)	10 (7757, High Reflective White)
	Body 2 (stucco)		Omega Products International (to match Sherwin Williams paint)	1154 (7542, Naturel)
	Body 3 (siding & roof access ladder)		Sherwin Williams	7060, Attitude Gray
	Accent Body		Sherwin Williams	0040, Roycroft Adobe
	Trim (Wood Trims, Fascias, Window/Door Trim, Posts, Beams, Brackets, Corbels, Etc.)		Sherwin Williams	7757, High Reflective White
	Entry Door		Sherwin Williams	7069, Iron Ore
Pre-Coated Colors from Manufacturer	Downspouts & Scuppers		<i>Paint to match adjacent Body color</i>	
	Garage Doors		Wayne Dalton	TBD
	Windows		Milgard	White
	Decking		UPI (Urethane Polymers International)	Castle Gray
	Roof - Asphalt Shingle		Certainteed: Landmark	Moire Black
Stone	Stone		Eldorado Stone: Cut Coarse	Custom #1496
	Stone Layup		<p>Bonding Surface: All surfaces must be clean, free of any dirt, loose debris to create an even and flat surface for stone installation.</p> <p>Stone Lay-Up: Dry-stack stones in a tight horizontal orientation.</p> <p>Stone Joints: Mortar to be used for levelling and adhering purposes only. Mortar should not be visible and stone shadows should read strong.</p> <p>Stone Face: Stone face should remain clean, not mortar washed or sponged. DO NOT cover stone face with mortar.</p> <p><i>See sample image to left.</i></p>	

SCHEME 4



ROUND BARN VILLAGE

SANTA ROSA 6

EXTERIOR COLOR/MATERIAL DESIGN


City Ventures


AT DESIGN
CONSULTING



Elevation A

COLORS MAY VARY DUE TO SCREEN RESOLUTION AND OR ON PRINTED MATERIAL. REFER TO ACTUAL PAINT CHIPS AND MATERIALS FOR COLOR ACCURACY.



Elevation B

COLORS MAY VARY DUE TO SCREEN RESOLUTION AND OR ON PRINTED MATERIAL. REFER TO ACTUAL PAINT CHIPS AND MATERIALS FOR COLOR ACCURACY.



Elevation C

COLORS MAY VARY DUE TO SCREEN RESOLUTION AND OR ON PRINTED MATERIAL. REFER TO ACTUAL PAINT CHIPS AND MATERIALS FOR COLOR ACCURACY.

ROUND BARN VILLAGE

SANTA ROSA 6

EXTERIOR COLOR/MATERIAL DESIGN


City Ventures


AT DESIGN
CONSULTING



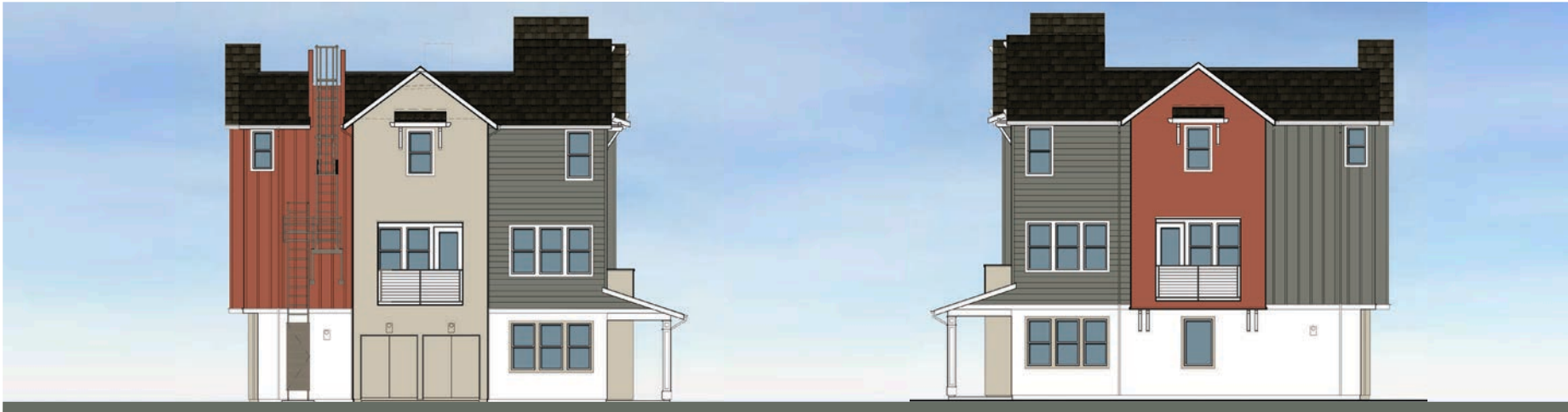
FRONT

Elevation C

COLORS MAY VARY DUE TO SCREEN RESOLUTION AND OR ON PRINTED MATERIAL. REFER TO ACTUAL PAINT CHIPS AND MATERIALS FOR COLOR ACCURACY.



REAR



LEFT

RIGHT

Elevation C

COLORS MAY VARY DUE TO SCREEN RESOLUTION AND OR ON PRINTED MATERIAL. REFER TO ACTUAL PAINT CHIPS AND MATERIALS FOR COLOR ACCURACY.



FRONT

Elevation B

COLORS MAY VARY DUE TO SCREEN RESOLUTION AND OR ON PRINTED MATERIAL. REFER TO ACTUAL PAINT CHIPS AND MATERIALS FOR COLOR ACCURACY.



REAR



LEFT

RIGHT

Elevation B

COLORS MAY VARY DUE TO SCREEN RESOLUTION AND OR ON PRINTED MATERIAL. REFER TO ACTUAL PAINT CHIPS AND MATERIALS FOR COLOR ACCURACY.

TOWNHOMES

at FRONT ENTRIES & GARAGES



MANUFACTURER: Troy Lighting
FAMILY: Mission Beach
PRODUCT SKU: B6352
FINISH: Textured Black
BULB: Use LED (not included)
WIDTH: 7.5"
HEIGHT: 19.5"

at PATIO DOORS & SIDE ELEVATIONS



MANUFACTURER: Troy Lighting
FAMILY: Mission Beach
PRODUCT SKU: B6351
FINISH: Textured Black
BULB: Use LED (not included)
WIDTH: 6"
HEIGHT: 13.5"

LANDSCAPE LIGHTING

POLE LIGHTING



MANUFACTURER: US Architectural Lighting
FIXTURE: DSAPM25
POLE ARM: XPK
ARM WIDTH: 24"
ARM HEIGHT: 42"
POLE HEIGHT: TBD by Electrical Engineer
COLOR/FINISH: RAL9005-S, Black Smooth
FIXTURE SIZE: TBD by Electrical Engineer

BOLLARD LIGHTING



MANUFACTURER: US Architectural Lighting
FIXTURE: CLXB
COLOR/FINISH: RAL9005-S, Black Smooth
OPTICS: PG, Prismatic Glass
WIDTH: 16" (8" Dia. Post)
HEIGHT: 42"

0123456789

MANUFACTURER: Modern House Numbers
TYPE FACE: SoHo
MATERIAL: Brushed Aluminum
NUMBER HEIGHT: 4"
STANDOFF: 1/2"
COLOR: Black

ROUND BARN VILLAGE

SANTA ROSA 6

EXTERIOR COLOR/MATERIAL DESIGN

