

# Cannabis Retail Merit Based Review

Concentration Area – 112 Commercial Ct

---

November 14, 2018

William Rose  
Supervising Planner  
Planning and Economic Development

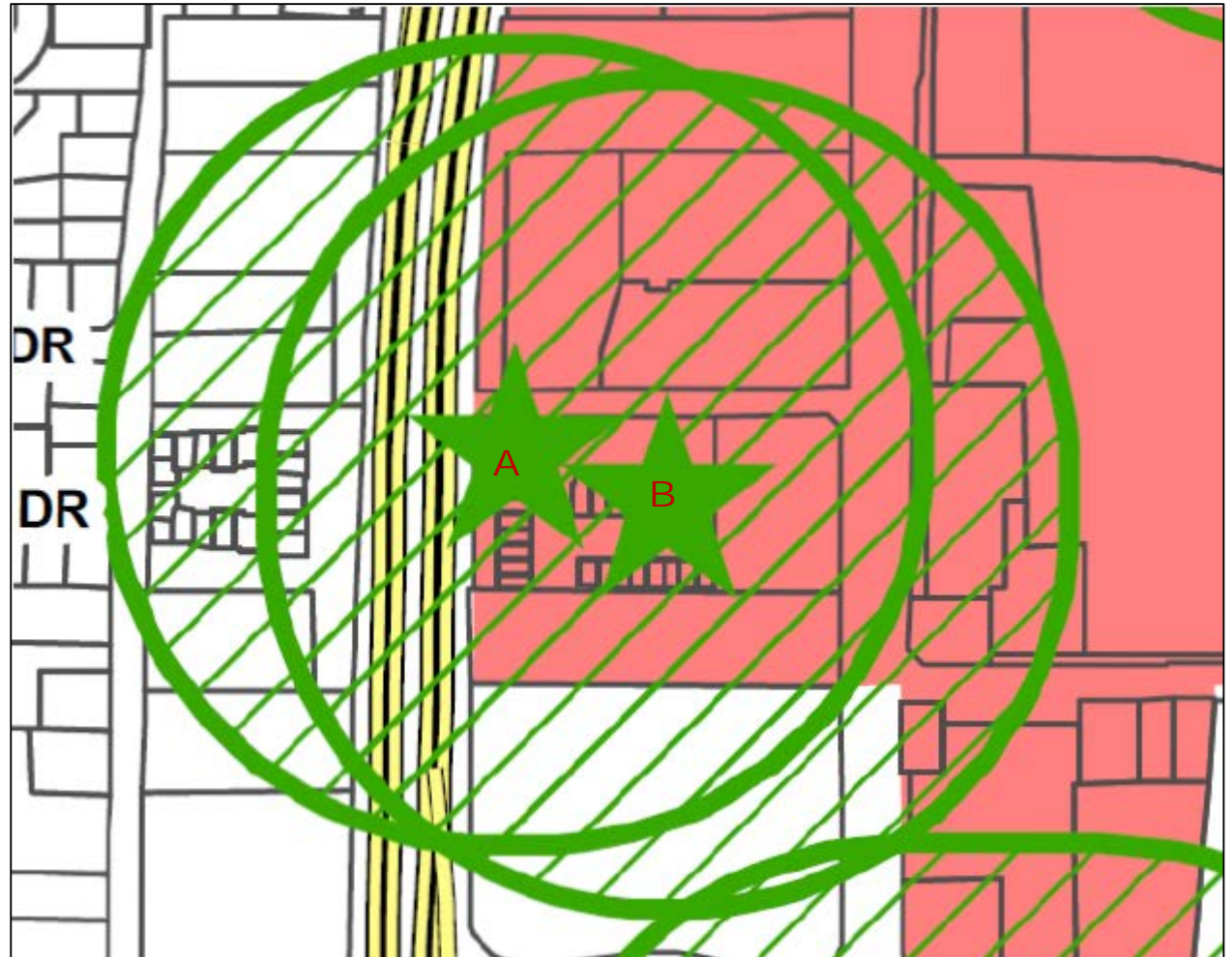
# Overconcentration Map



600-foot Buffer from Proposed  
Retail Parcel Boundary



Prospective Cannabis  
Retail Applicant



# Project Locations Aerial Overview



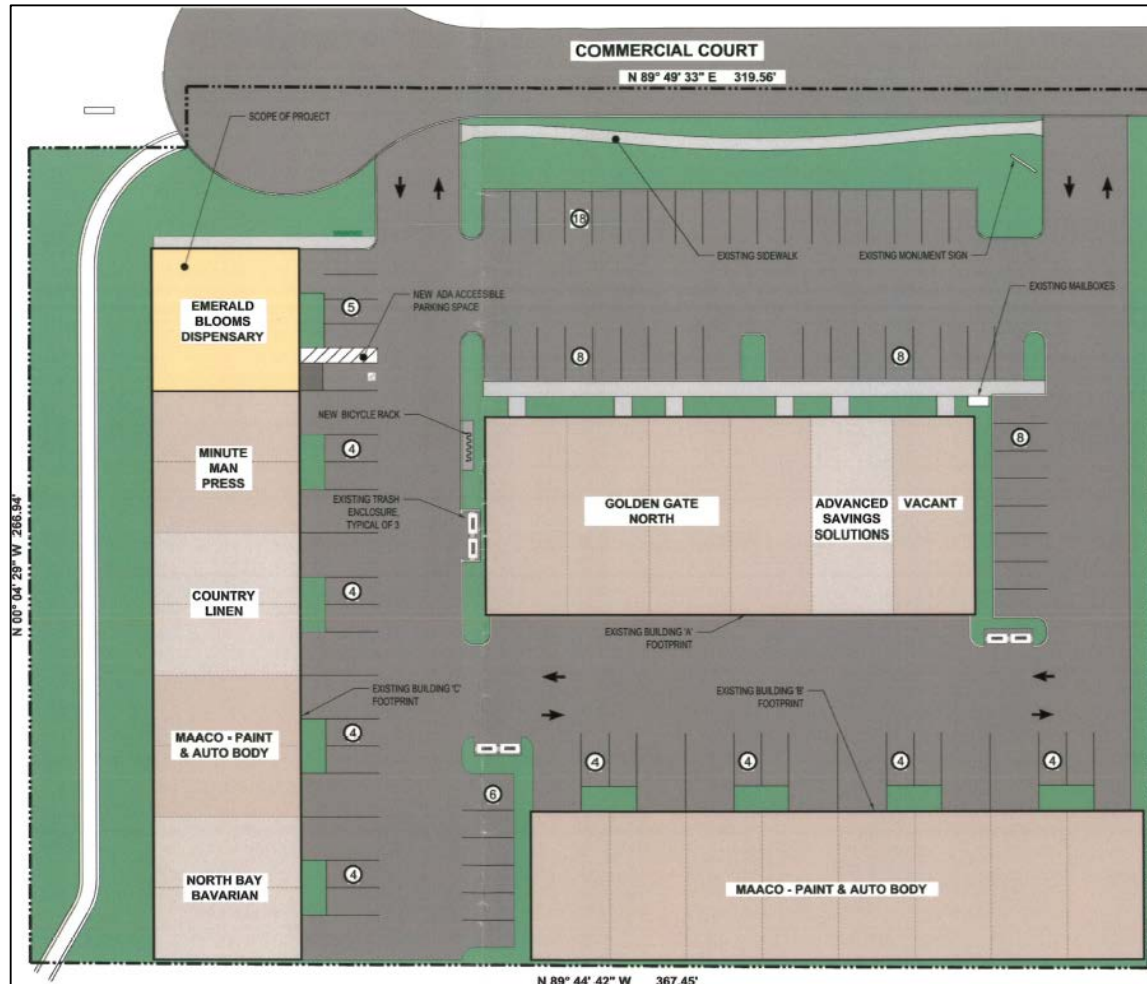
# Project Location

## (A) 112 Commercial Ct, #2



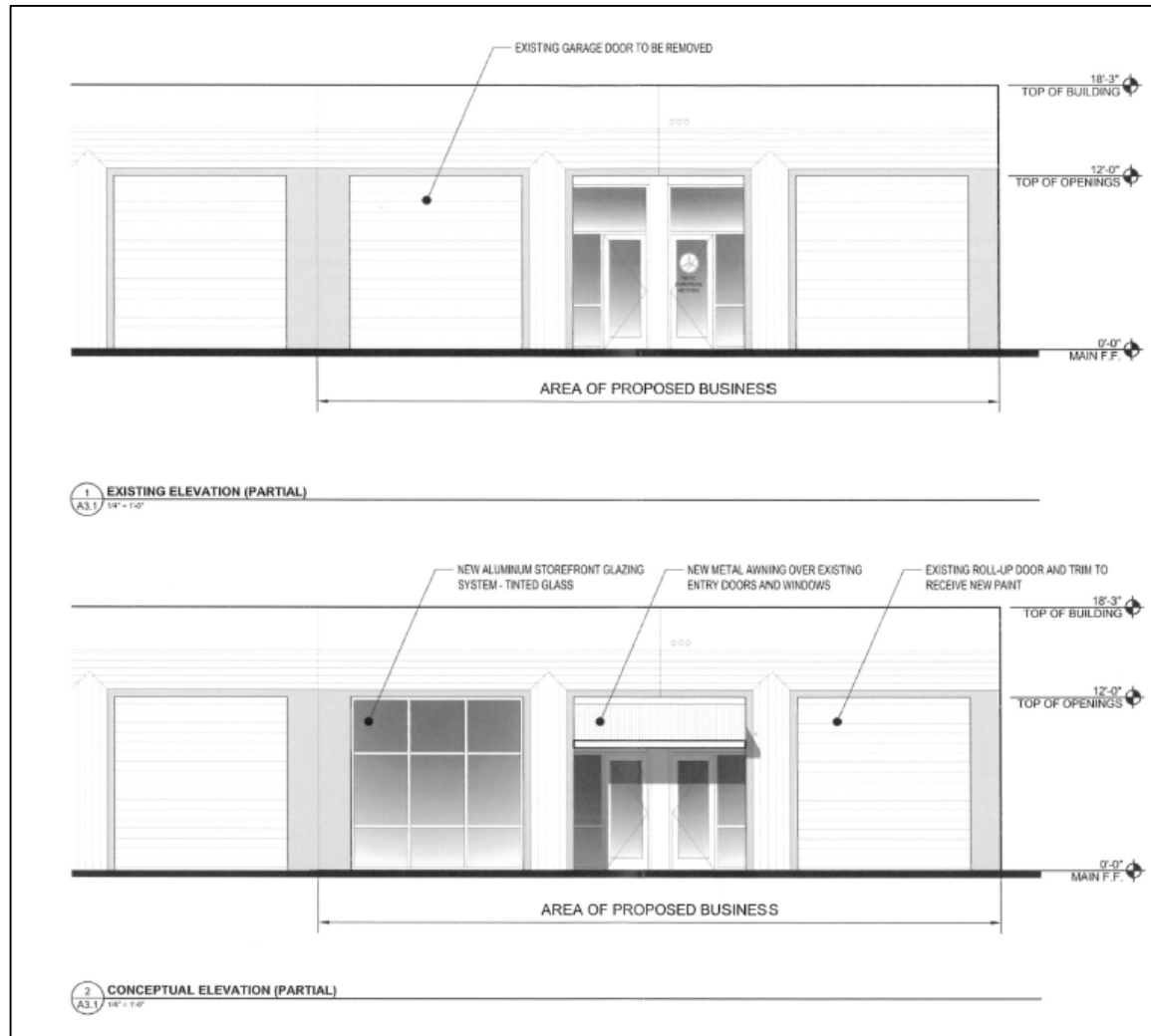
# Project Location

## (A) 112 Commercial Ct, #2

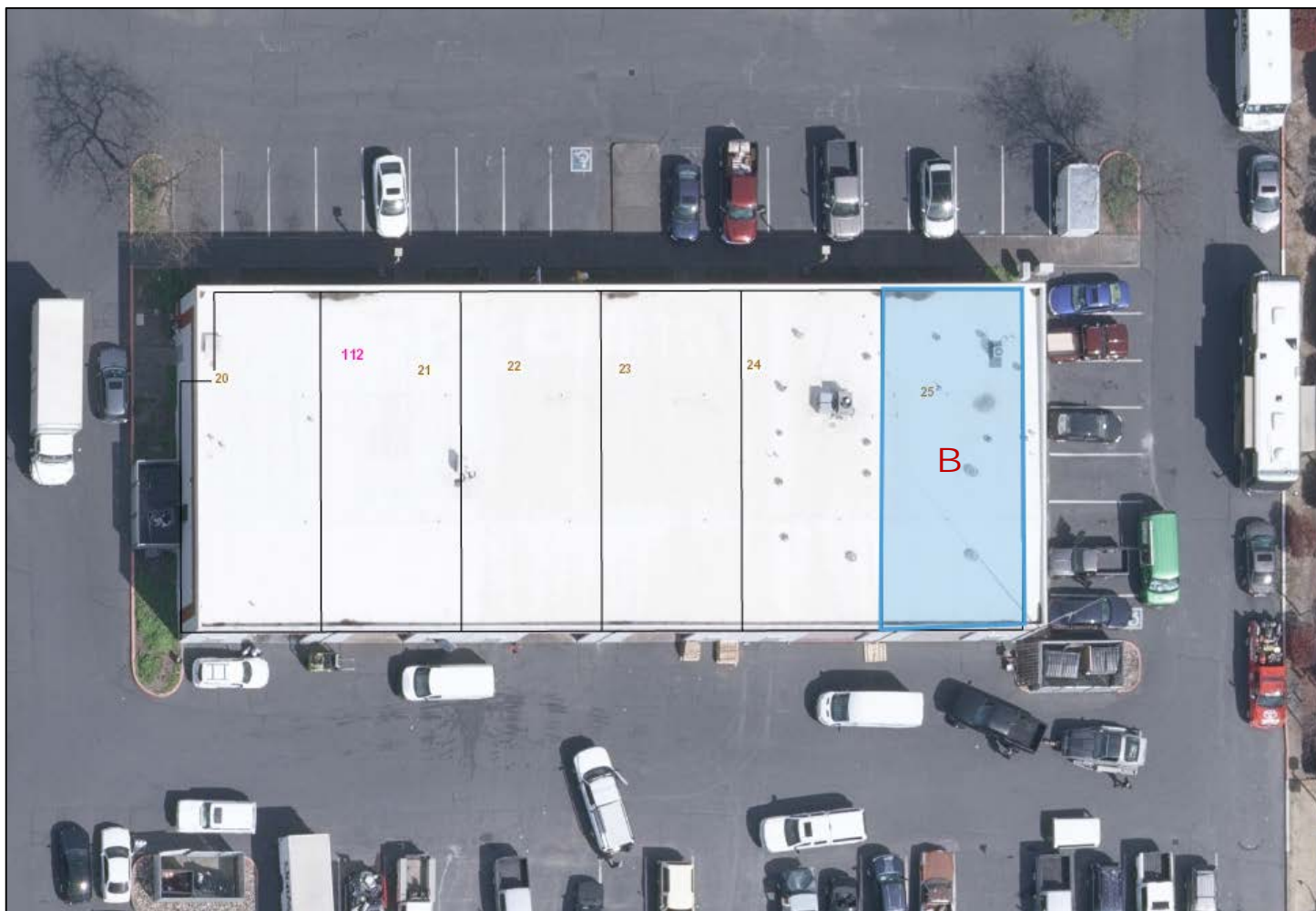


# Project Location

## (A) 112 Commercial Ct, #2



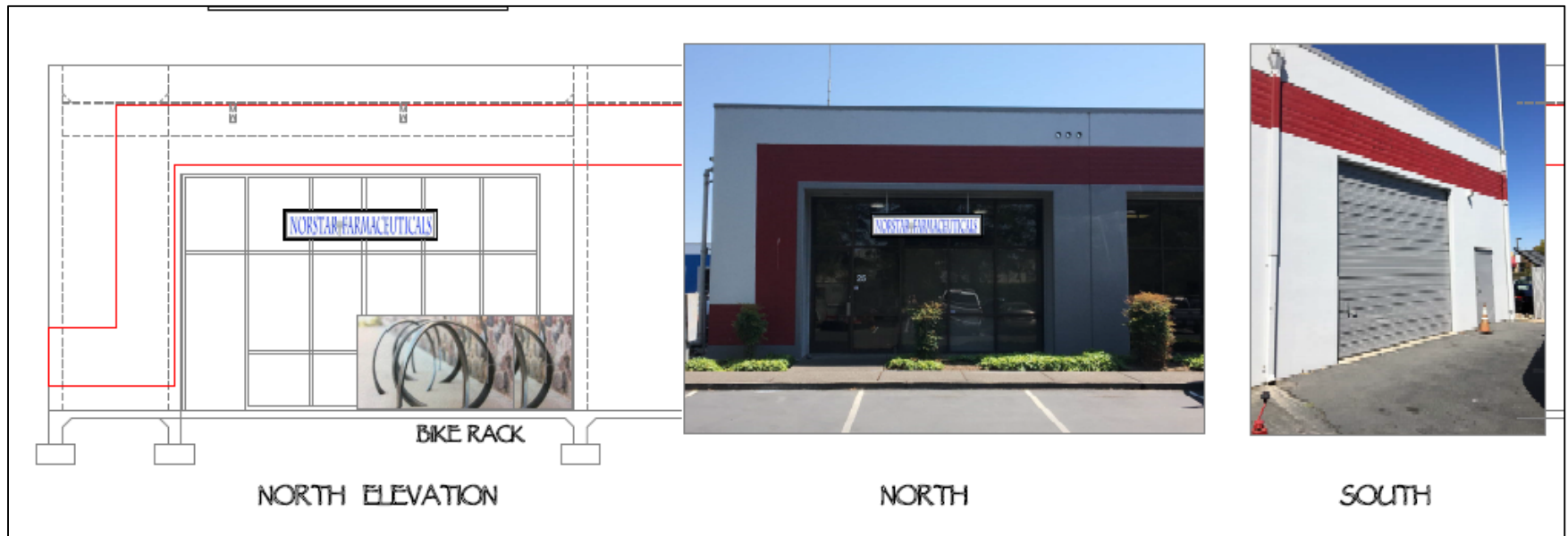
# Project Location (B) 112 Commercial Ct, #25



# Project Location (B) 112 Commercial Ct, #25



# Project Location (B) 112 Commercial Ct, #25



## Evaluation Scores

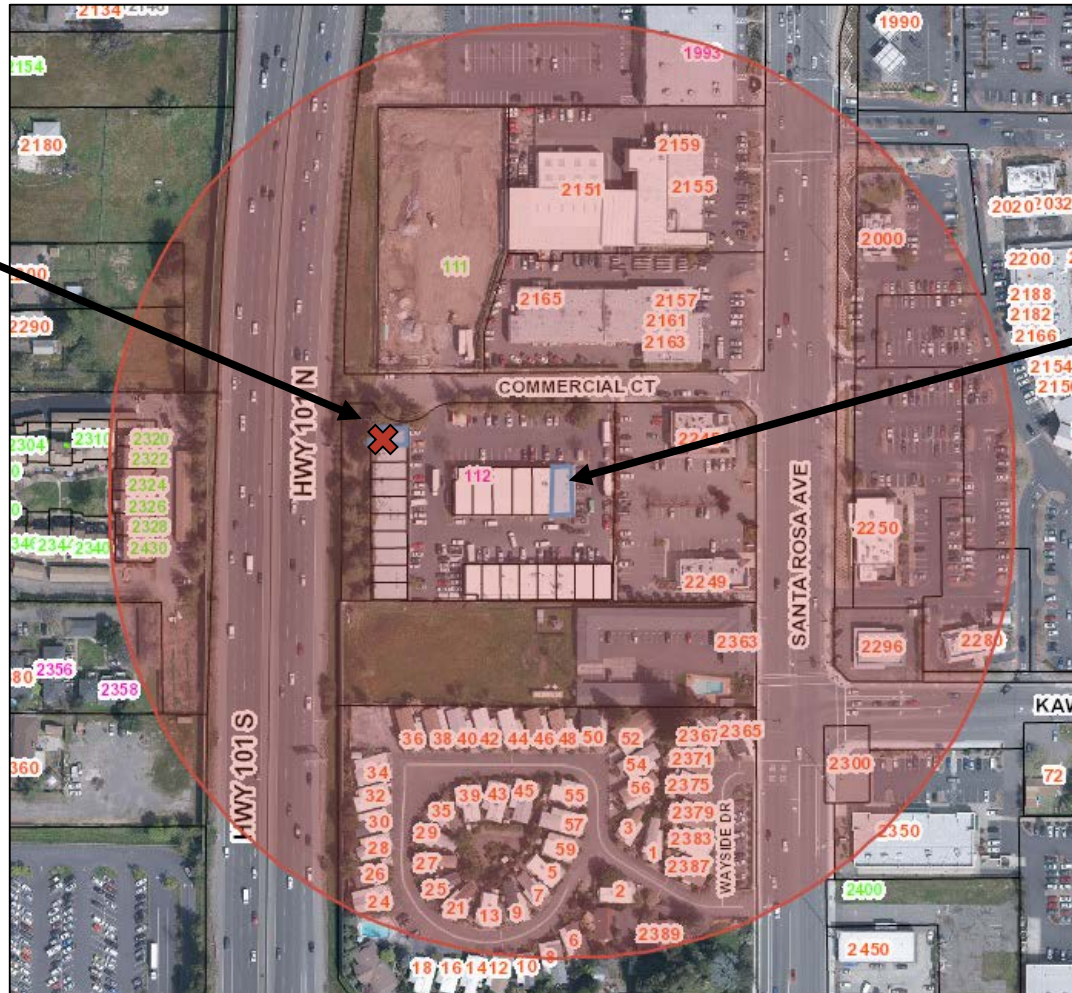
AVERAGE SCORES		
Cannabis Retail Merit Based Review Criteria	A	B
	Emerald Blooms CUP18-065 112 Commercial Ct, #2	NorStar Dispensary CUP18-045 112 Commercial Ct, #25
Local & State Compliance (20 points)	10.7	15.7
Site Management (20 points)	14	19.7
Neighborhood Compatibility (30 points)	21.7	23.8
Neighborhood Enhancement (30 points)	18.3	23.5
<b>TOTAL SCORE (Out of 100)</b>	<b>64.7</b>	<b>82.7</b>

# Merit Based Review Recommendation

## Applicant B – 112 Commercial Ct, #25

Applicant A  
Emerald Blooms  
Score: 64.7

Applicant B  
NorStar  
Score: 82.7



- Since applicant B achieved the highest score, the Department of Planning & Economic Development recommends that the Cannabis Subcommittee, by motion, select applicant B to move forward in the Conditional Use Permit entitlement process.

William Rose  
Supervising Planner  
Planning and Economic Development  
[WRose@srcity.org](mailto:WRose@srcity.org)  
(707)543-3253

