



SMALL PATIO TERRACE



RESTING POINTS WITH BENCHES



STAMPED ASPHALT ACCENTS



PERMEABLE GRANITECRETE PAVING



TRELLIS IN COURTYARD



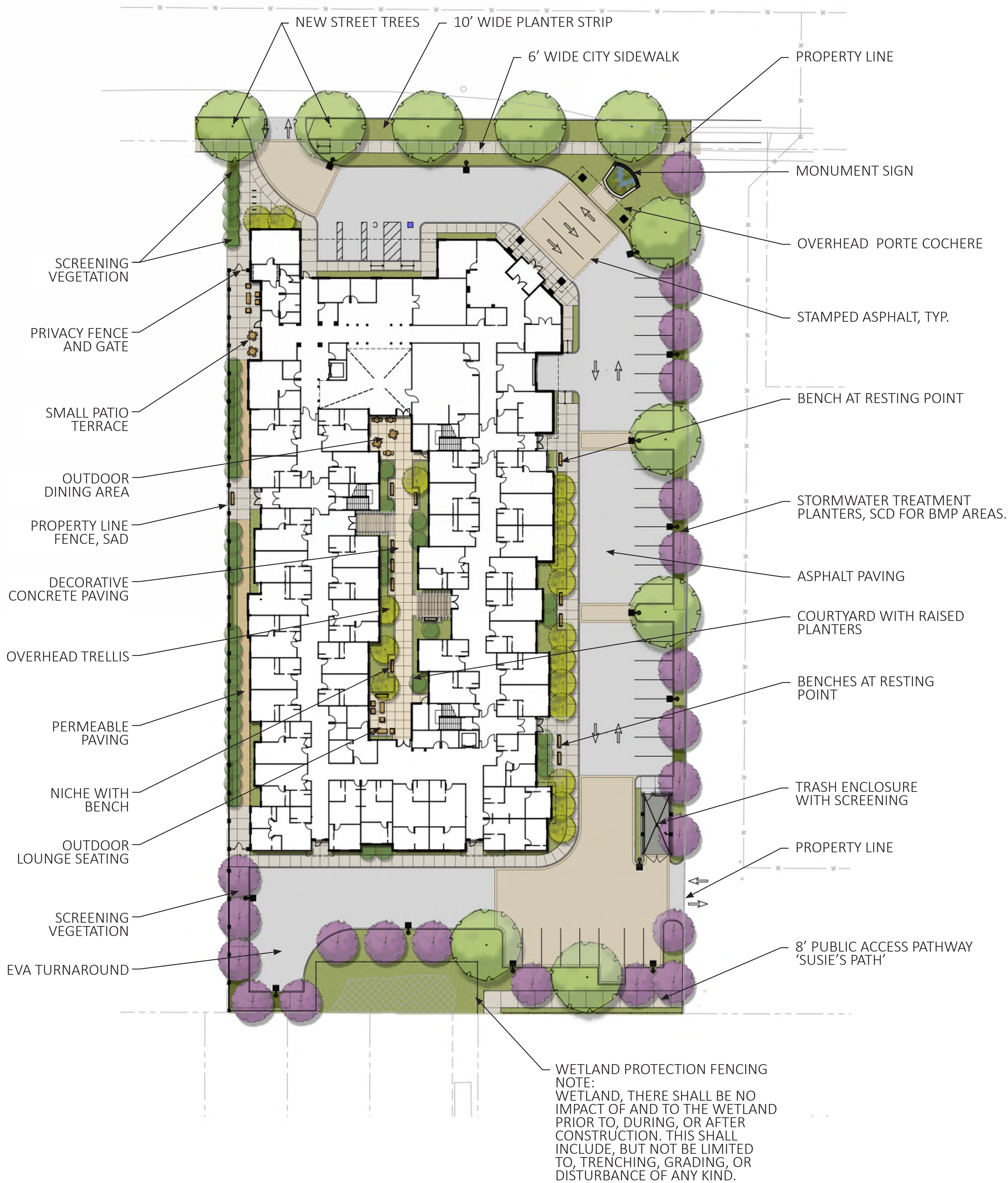
PROPERTY LINE FENCE/PRIVACY WALL



COURTYARD WITH RAISED PLANTERS



STREET TREES



PRELIMINARY PLANT LIST

| SYMBOL | BOTANICAL NAME | COMMON NAME |
|------------------------|-----------------------------------|------------------------|
| TREES | | |
| | ACER MACROPHYLLUM | BIGLEAF MAPLE |
| | PLATANUS ACERIFOLIA 'COLUMBIA' | LONDON PLANE TREE |
| | QUERCUS AGRIFOLIA | COAST LIVE OAK |
| FLOWERING ACCENT TREES | | |
| | LAGERSTROEMIA 'MUSKOGEE' | LAVENDER CRAPE MYRTLE |
| | CERCIS CANADENSIS 'FOREST PANSY' | FOREST PANSY REDBUD |
| SCREEN SHRUBS | | |
| | ARCTOSTAPHYLOS 'HOWARD McMINN' | MANZANITA |
| | CEANOTHUS RAY HARTMAN | RAY HARTMAN WILD LILAC |
| | PRUNUS ILICIFOLIA | CATALINA CHERRY |
| SHRUBS & GRASSES | | |
| | KNIPHOFIA UVARIA 'BLAZE' | RED HOT POKER |
| | LIBERTIA PEREGRINANS | ORANGE LIBERTIA |
| | LIMONIUM PEREZII | SEA LAVENDER |
| | ROSA 'SEA FOAM' | GROUNDCOVER ROSE |
| | ROSMARINUS 'TUSCAN BLUE' | ROSEMARY |
| GROUNDCOVERS | | |
| | ARCTOSTAPHYLOS 'EMERALD CARPET' | MANZANITA |
| | MAHONIA REPENS | CREeping MAHONIA |
| VINES | | |
| | DISTICTIS BUCCINATORIA | BLOOD RED TRUMPET VINE |
| | HARDENBERGIA VIOLACEA | PURPLE VINE LILAC |
| STORMWATER | | |
| | CAREX DIVULSA | BERKELEY SEDGE |
| | CHONDROPETALUM TECTORUM | CAPE RUSH |
| | LOMANDRA LONGIFOLIA 'BREEZE' | DWARF MAT RUSH |
| | SISYRINCHIUM BELLUM 'NORTH COAST' | BLUE-EYED GRASS |

WATER EFFICIENT NOTES

1. IRRIGATION SYSTEM TO BE FULLY AUTOMATIC WEATHER-BASED SYSTEM USING LOW-FLOW AND BUBBLER DISTRIBUTION. NEW IRRIGATION IN ACCORDANCE WITH REQUIREMENTS AND GUIDELINES OF THE SONOMA COUNTY WATER AGENCY FOR WATER EFFICIENT LANDSCAPE AND SANTA ROSA'S WATER EFFICIENT LANDSCAPE POLICY.
2. IRRIGATION AT ALL LOW & MIXED WATER USE HYDROZONES TO USE WATER CONSERVING LOW-FLOW IRRIGATION HEADS OR DRIP TUBING.
3. TREES SHALL BE ON A VALVE CIRCUIT INDEPENDENT OF ALL OTHER PLANTING.
4. IRRIGATION CONTROLLER MODEL SHALL UTILIZE EVAPOTRANSPIRATION DATA AND RAIN SENSOR DATA TO AUTOMATICALLY ADJUST WATERING SCHEDULES.
5. IRRIGATION EQUIPMENT SHALL INCLUDE A MANUAL SHUT-OFF VALVE AND BACKFLOW PREVENTION DEVICE.
6. IRRIGATION SCHEDULE TO BE DEVELOPED AND MANAGED TO UTILIZE THE MINIMUM AMOUNT OF WATER REQUIRED TO MAINTAIN PLANT HEALTH.

LANDSCAPE PLAN

PINER ROAD ASSISTED LIVING RESIDENCE
1980 PINER ROAD
SANTA ROSA, CALIFORNIA

DATED: 12/17/18
M:\PROJECTS\FULCRUM\PINER ROAD\AUTOCAD\HARD.DWG ----- 12/17/2018 3:38 PM BY DAVID FLORES

LEGEND



S1 SITE LIGHT STANDARD:
LITHONIA, D-SERIES LED AREA POLE MOUNT



S2 EXTERIOR WALL LIGHT:
BARRISTER, BRONZE LED
OUTDOOR WALL LIGHT



S3 BICYCLE RACK:
CYCLE-SAFE, CLASSIC BIKE U RACK
2-BIKE CAPACITY



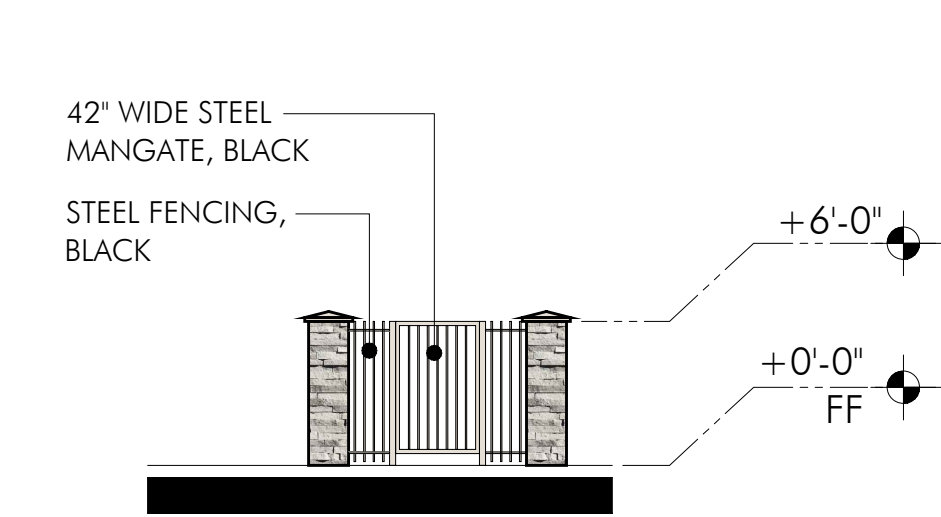
S4 TYPE A - PROPERTY LINE WALL @ WEST SIDE



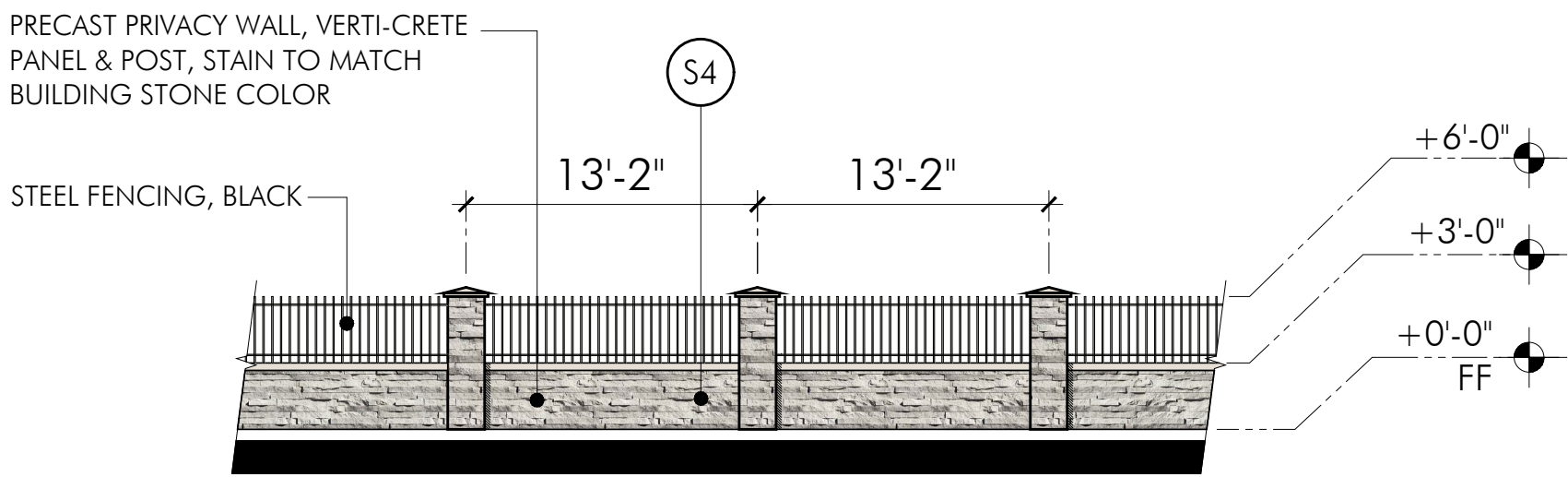
S5 TYPE B - SPLIT RAIL CEDAR FENCE



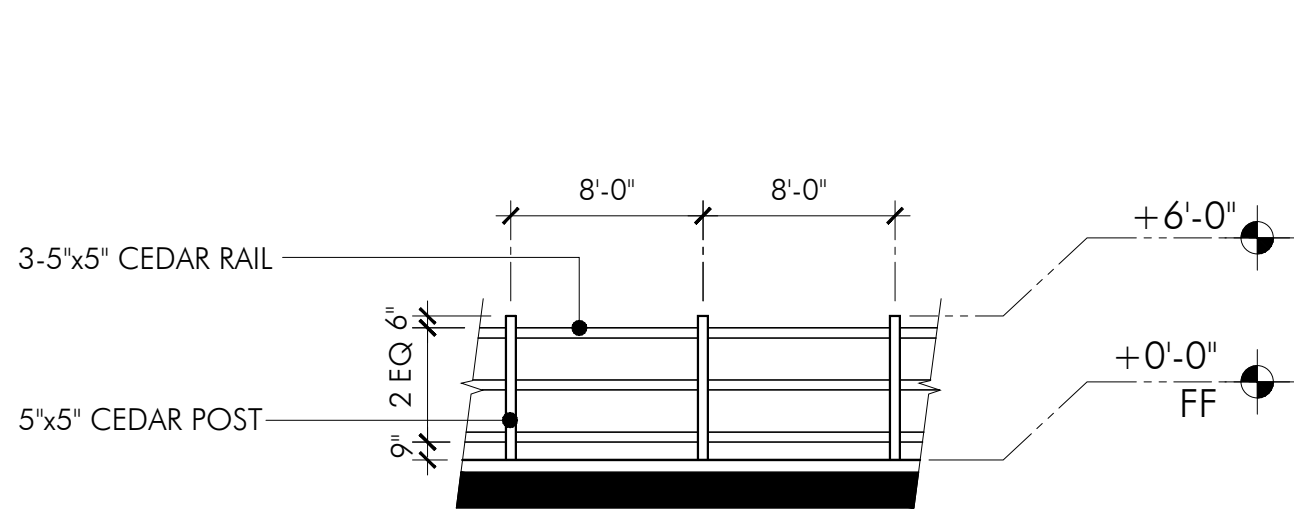
S6 TRELLIS



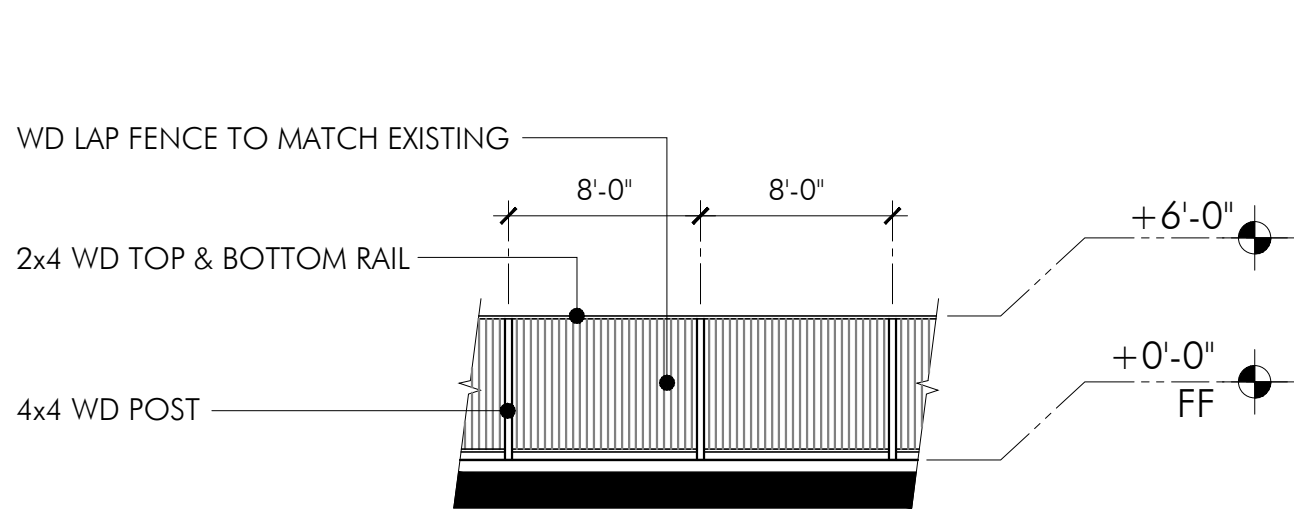
TYPE A - MANGATE & FENCE



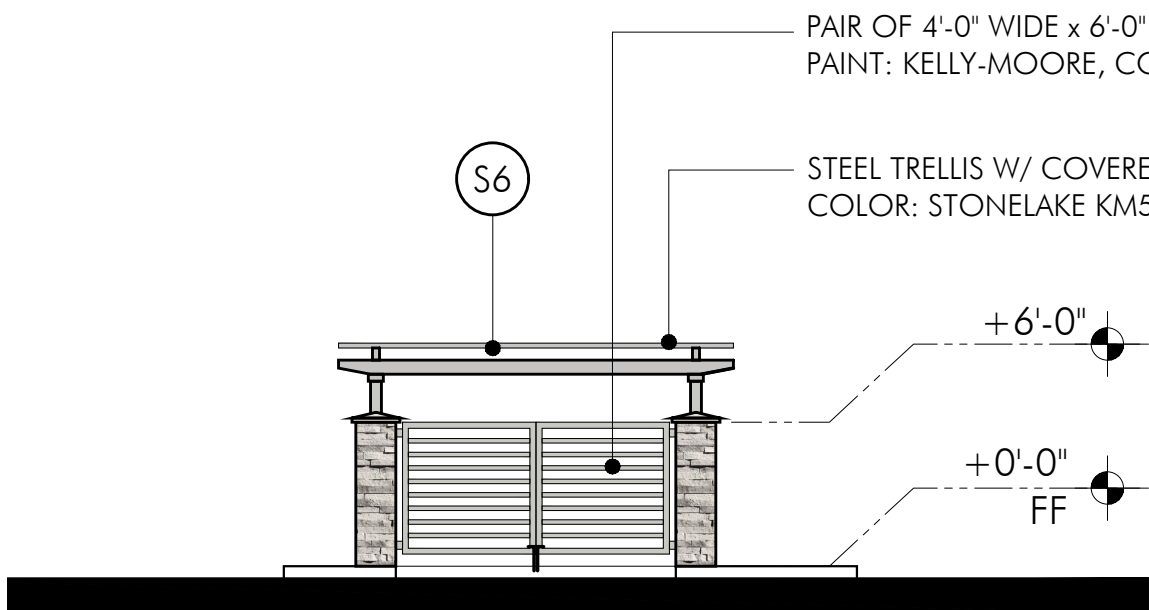
TYPE A - PROPERTY LINE WALL @ WEST SIDE



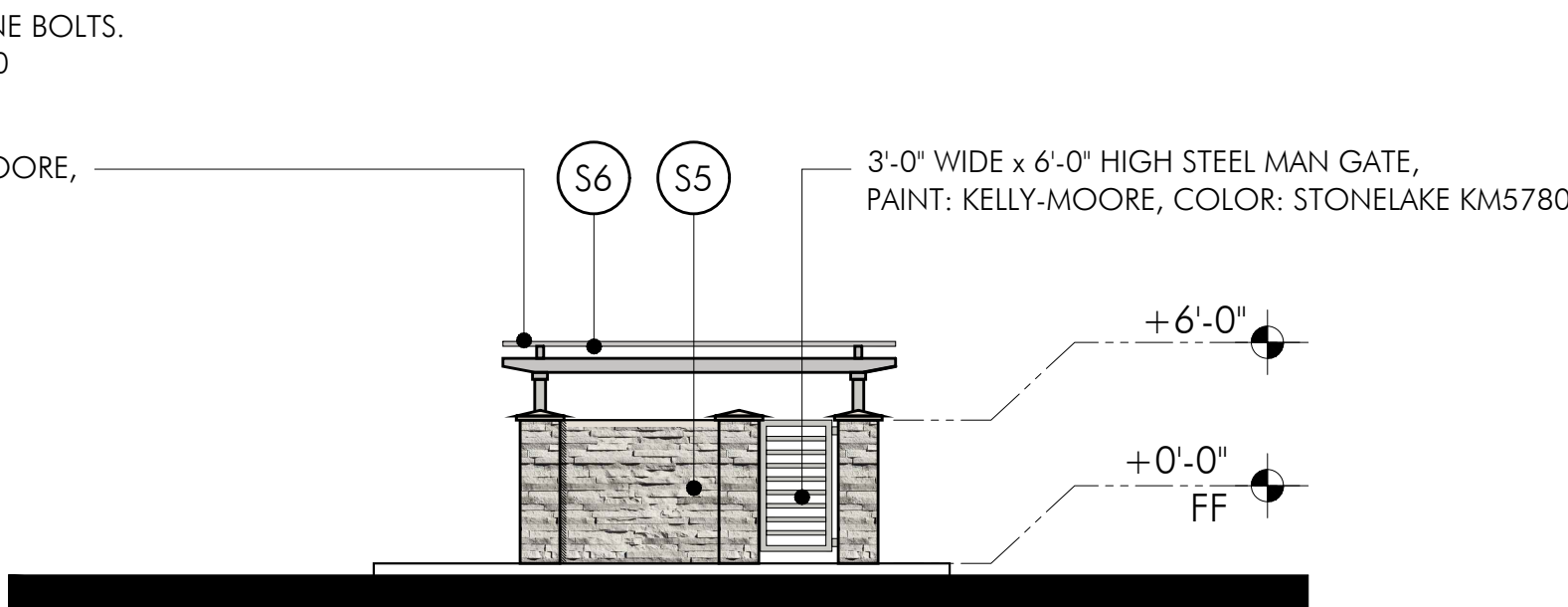
TYPE B - SPLIT RAIL CEDAR FENCE



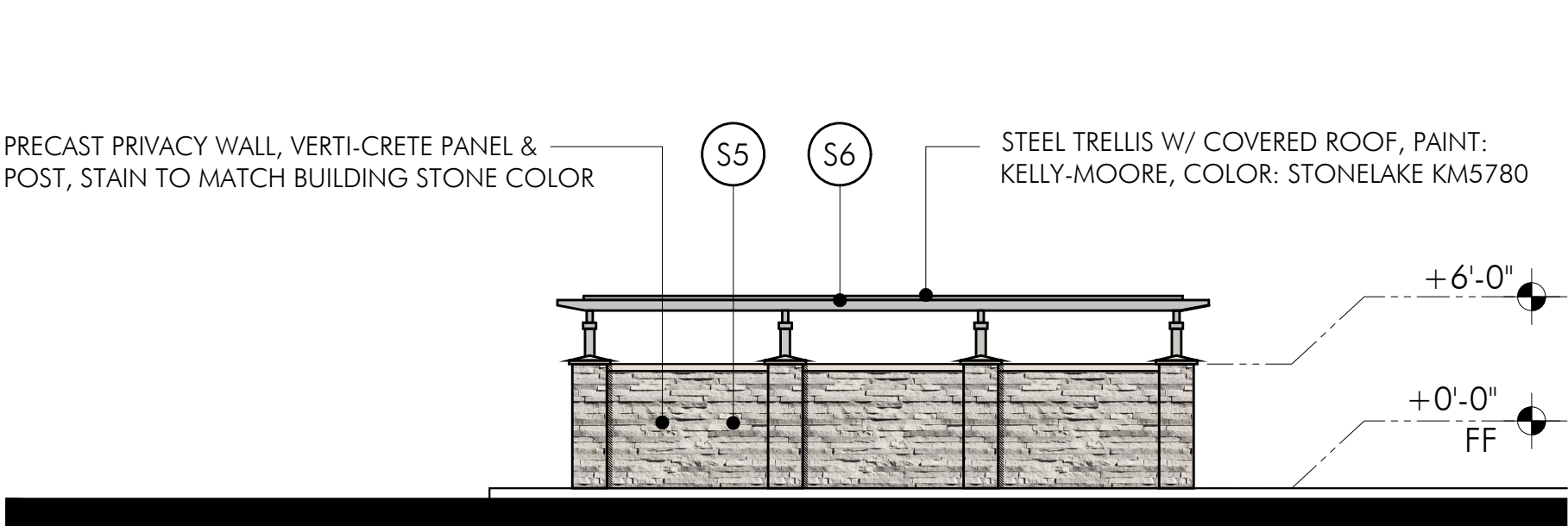
TYPE C - FENCE TO MATCH EXISTING



REFUSE ENCLOSURE @ SOUTH



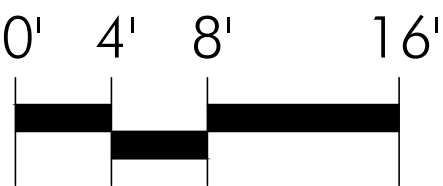
REFUSE ENCLOSURE @ NORTH

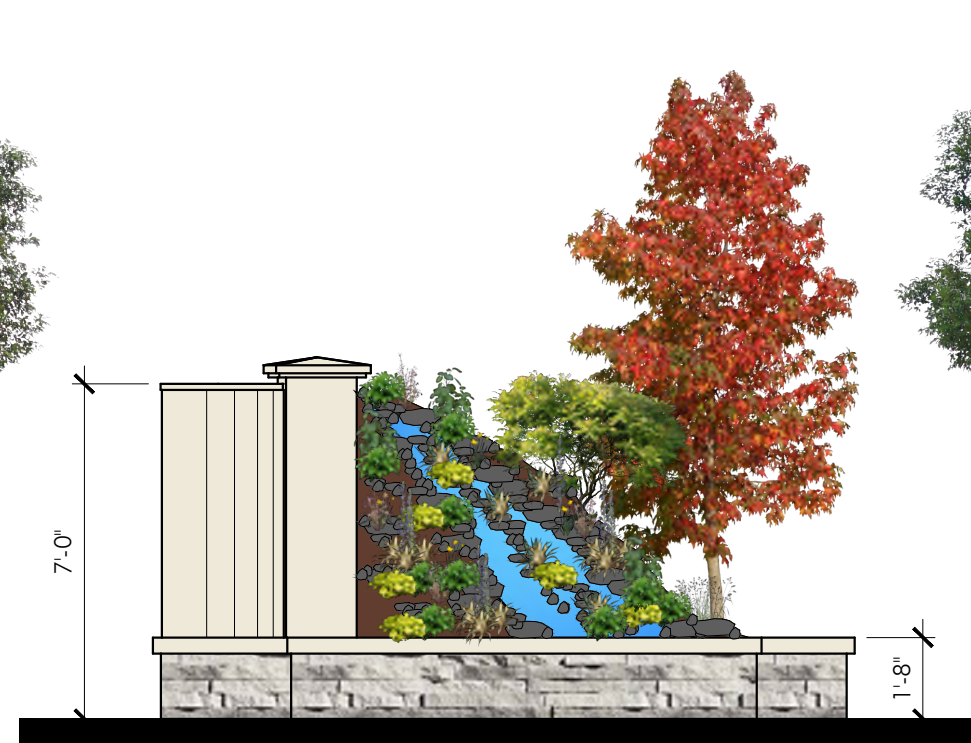
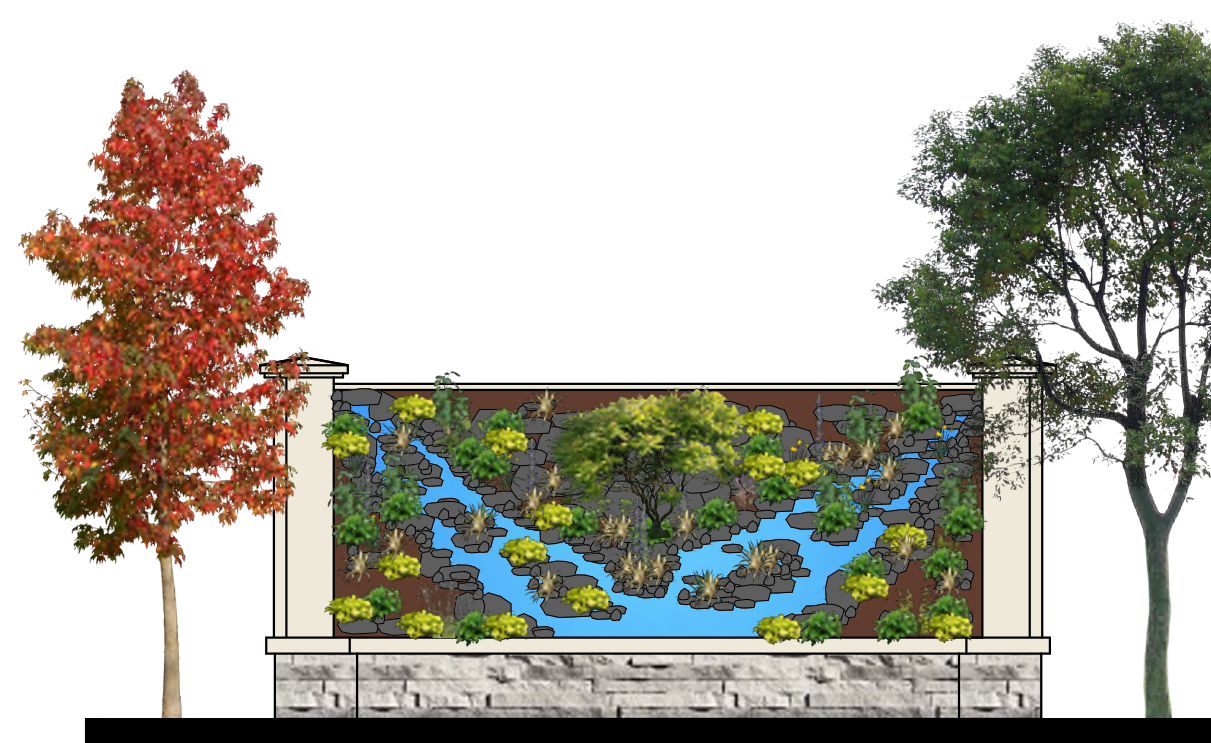
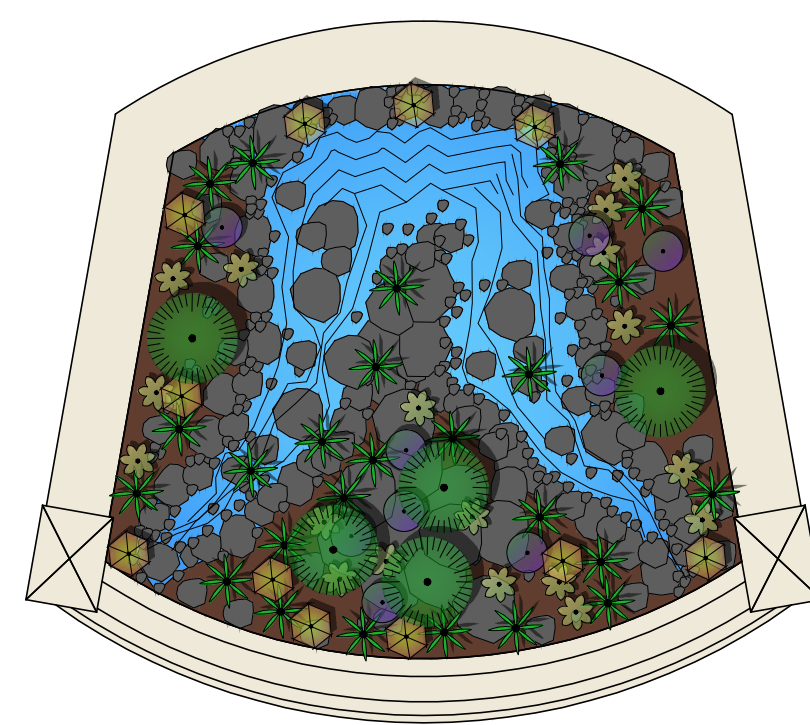
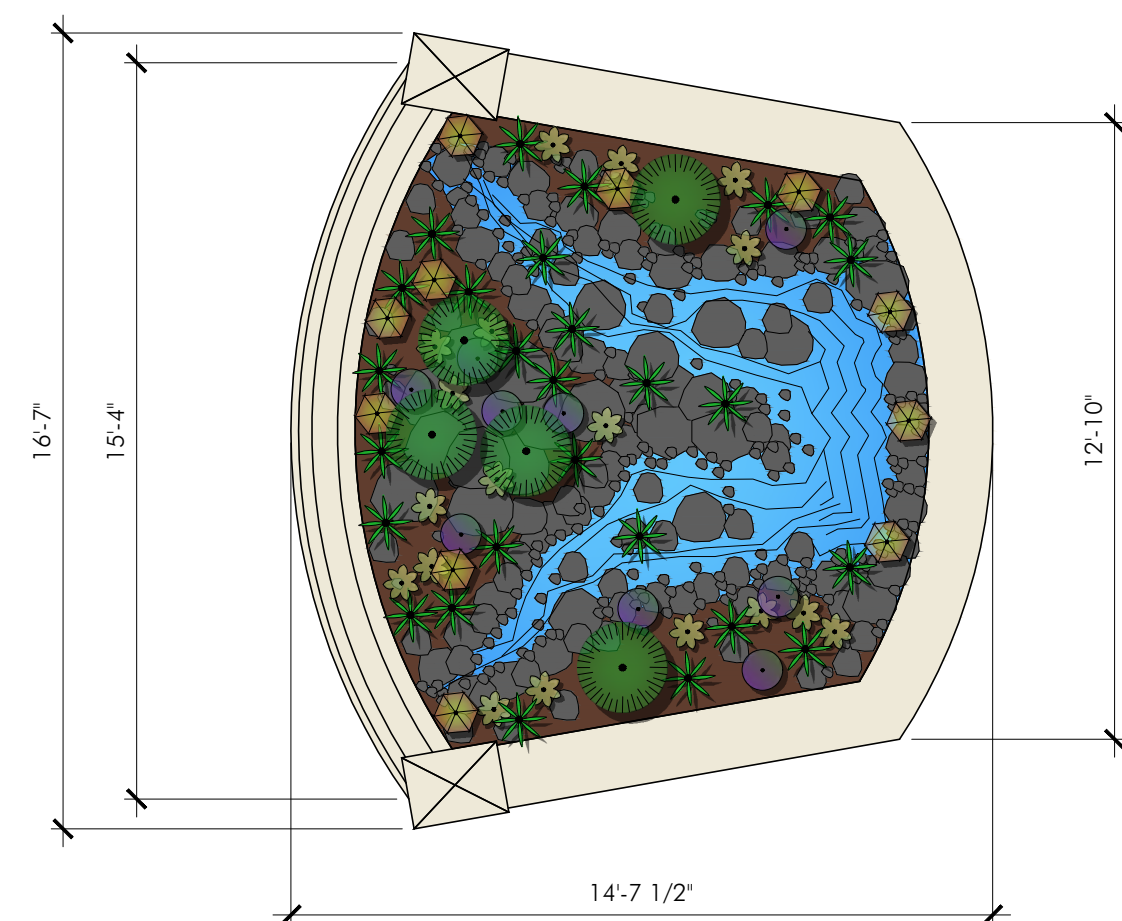
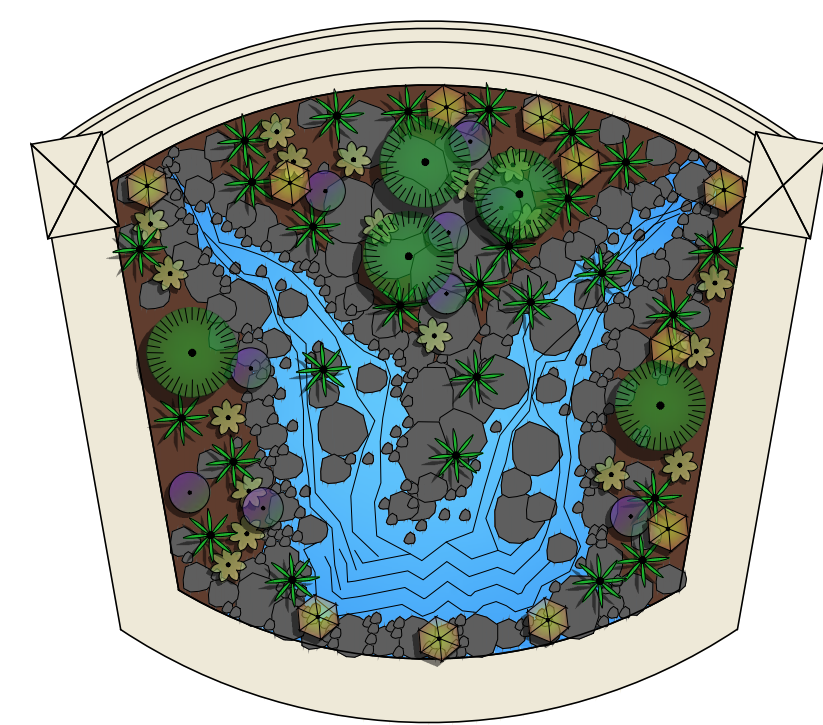


REFUSE ENCLOSURE @ EAST & WEST

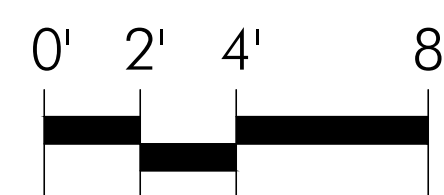
SITE DETAILS

PINER ROAD ASSISTED LIVING RESIDENCE
1980 PINER ROAD
SANTA ROSA, CALIFORNIA





MONUMENT SIGN



SITE PLAN



MONUMENT SIGN

PINER ROAD ASSISTED LIVING RESIDENCE
1980 PINER ROAD
SANTA ROSA, CALIFORNIA

DATED: 12/17/18
F:\SRA - SANTA ROSA ASSISTED LIVING\PRESENTATION\DRAWINGS\SRA-A304-MONUMENT SIGN.DWG - 12/17/2018 1:11 PM BY LEANNE HNH