

BENNETT VALLEY SENIOR CENTER, SAMUEL L. JONES HALL HOMELESS SHELTER, & STATE HOMELESS EMERGENCY AID PROGRAM

City Council
February 12, 2019

David Gouin and Kelli Kuykendall
Housing and Community Services 1

Council Request

- June 2018 request for study session on the BVSC for homeless services, shelter or safe haven
- HUD safe haven: “form of supportive housing that serves hard-to-reach homeless persons with severe mental illness who come primarily from the streets and have been unable or unwilling to participate in housing or supportive services.”

Homeless Emergency Aid Program (S-HEAP)

- State releases NOFA, \$500 million block grant
 - September 2018
- Sonoma County CDC submits application to State for \$12.1 million – December 2018
 - Set aside for capital needs requests
 - \$3.6 million for Santa Rosa
- Application due to CDC by February 8, 2019
- Recommendations to Leadership Council
March 2019

\$3.6 million S-HEAP Funds

- Based on immediate need to replace roof and Council request for study session on BVSC for homeless services

	Estimated Cost:
Replacement of roof at SJH	\$1.6 million
Activation of navigation center at BVSC to include shelter beds and temporary structures	\$2.0 million
TOTAL	\$3.6 million

Roof Replacement at SJH

- \$1.6 million estimate – capital
- Amount of S-HEAP funds required for roof replacement pending scope of work and final cost estimates
- Work effort underway
- Summer 2019

Santa Rosa Navigation Center (SRNC)

- \$2 million – capital & operating
- Phased activation subject to final cost estimates for SJH

	Timeline
Phase I: Relocation of up to 40 beds from SJH to existing facility	Summer 2019
Phase II: Expand BVNC to include temporary structures in parking lot (up to 20 beds)	Fall 2019

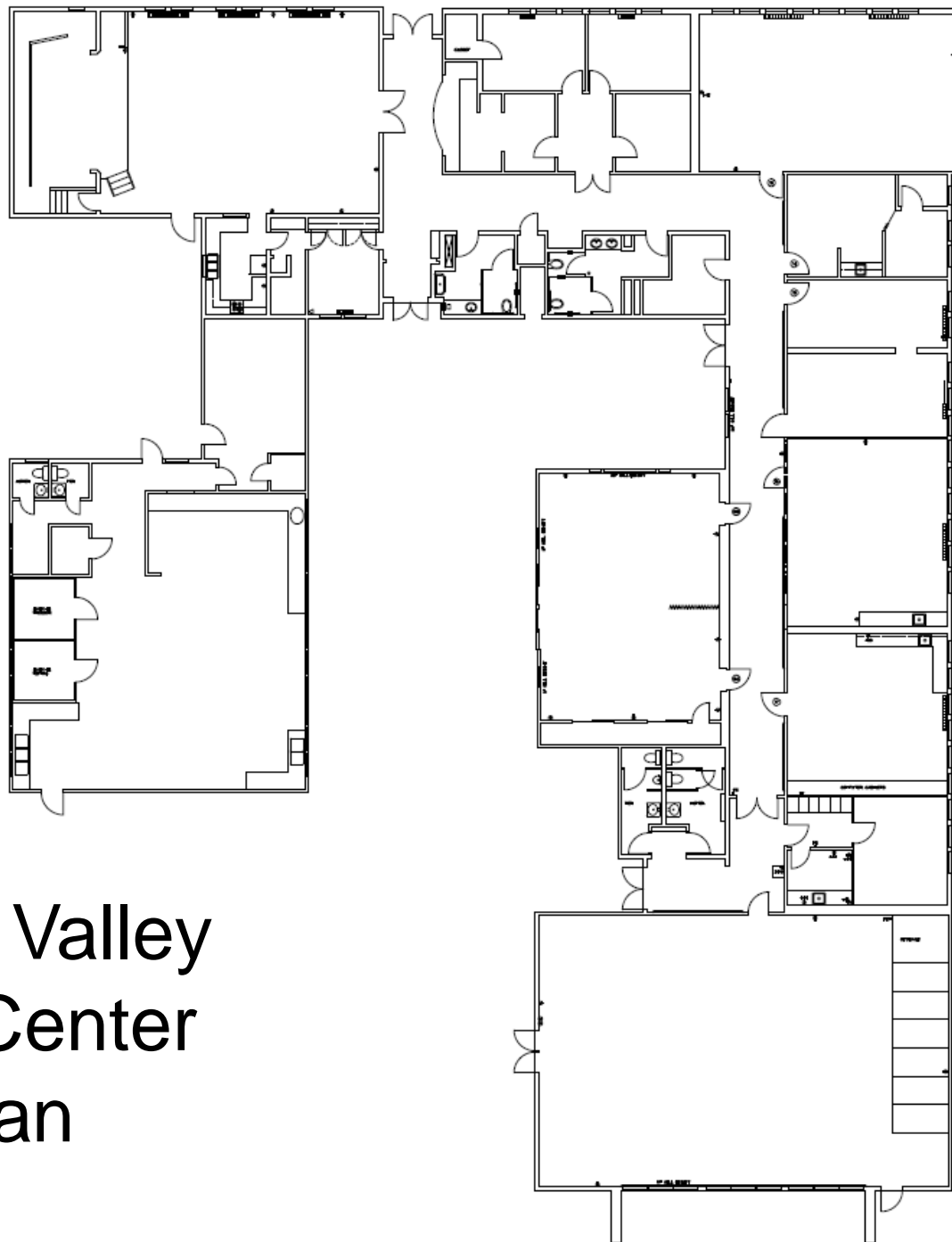
Development of the Site

- Request proposals to repurpose the site as permanent supportive housing and/or affordable housing
- Return to Council with draft RFP
- Solicit and select developer
- Selected developer may compete for CDBG-DR multi-family housing funds

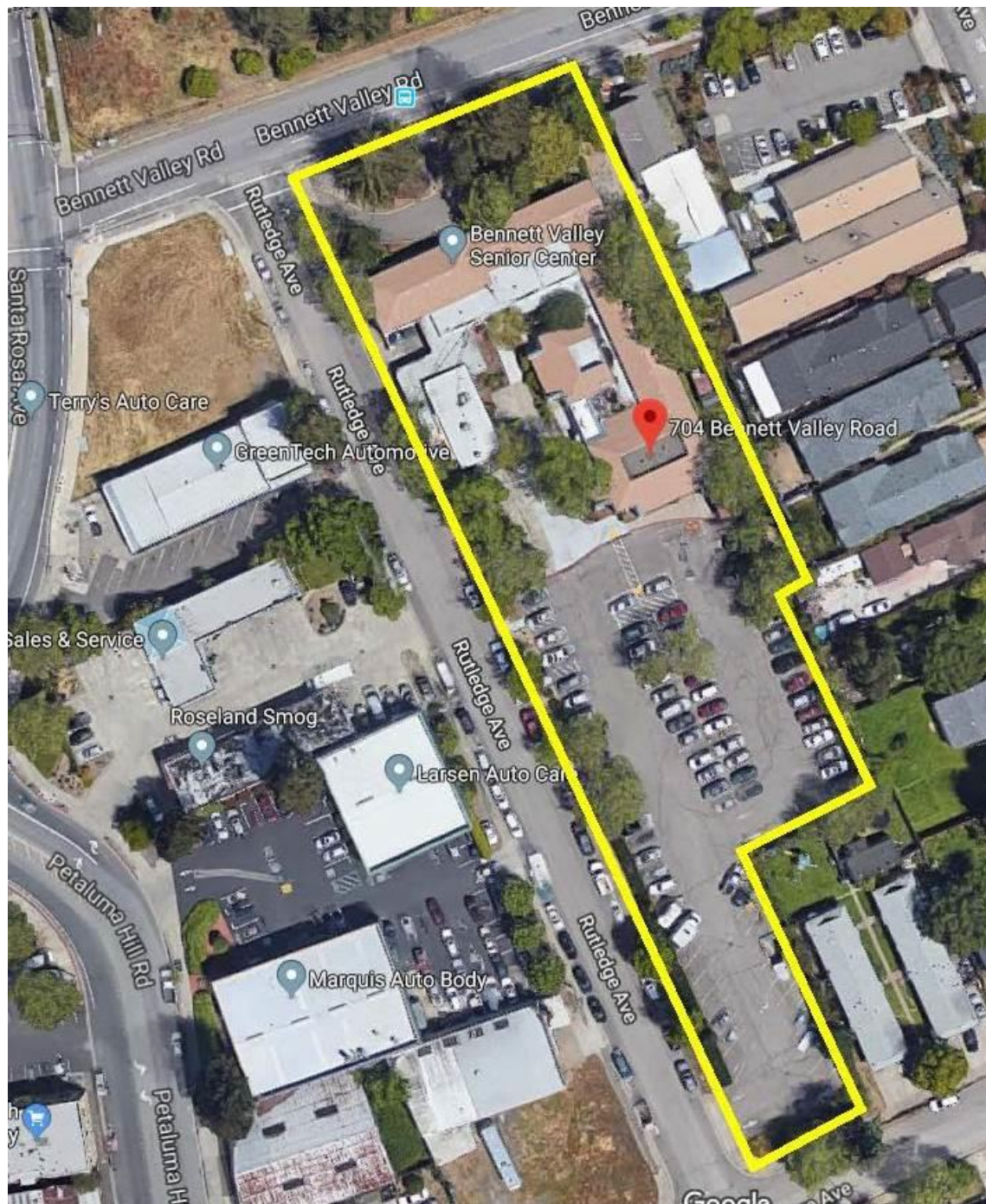
SENIOR CENTER

704

704



Bennett Valley Senior Center Floor Plan



Santa Rosa Navigation Center

- Low-barrier, housing-focused, smaller scale
- More options to serve persons w/disabilities
- Up to 60 beds – shelter & temp. structures
- 2 year period – S-HEAP funding
- Catholic Charities – Operator
 - Reduction in number of beds at SJH
 - Relocation of SJH clients during construction
 - Continuity of services and economies of scale

Santa Rosa Navigation Center

- Request for Proposals – Operating
 - Equity
 - Potential to serve range of vulnerable subpopulations
 - Single Adults and Chronically Homeless – SJH
 - Youth, Families, Veterans, Older adults
- Other considerations
 - Sustainability – 2 year S-HEAP funding
 - Permanent Supportive Housing
 - Affordable Housing

Next steps

- Update application to CDC for S-HEAP funds
- Finalize scope of work and cost estimates for SJH
- Return with SRNC contract with Catholic Charities or issue RFP for operator
- Community Meeting
- Return with RFP solicitation to develop the site as permanent supportive housing and/or affordable housing

Recommendation

- It is recommended by the Housing and Community Services Department that the Council hold a study session to discuss the following:
- 1) potential short-term use of the former Bennett Valley Senior Center (BVSC) for homeless services, including shelter, safe haven, and/or navigation center to be coordinated with Catholic Charities of the Diocese of Santa Rosa in association with the Samuel L. Jones Hall Homeless Shelter (SJH) or independently through another provider;

Recommendation

- 2) application to the Sonoma County Community Development Commission (CDC), lead agency for the Sonoma County Continuum of Care (Home Sonoma County), for \$3.6 million in State Homeless Emergency Aid Program (S-HEAP) funding for the SJH and BVSC; and
- 3) potential long-term use of the BVSC site for permanent supportive housing and/or affordable housing.