

Grove Village Time Extension

Assessor's Parcel Nos 134-042-011, -017, -042, -043, & -048

May 9, 2019

Susie Murray, Senior Planner
Planning and Economic Development

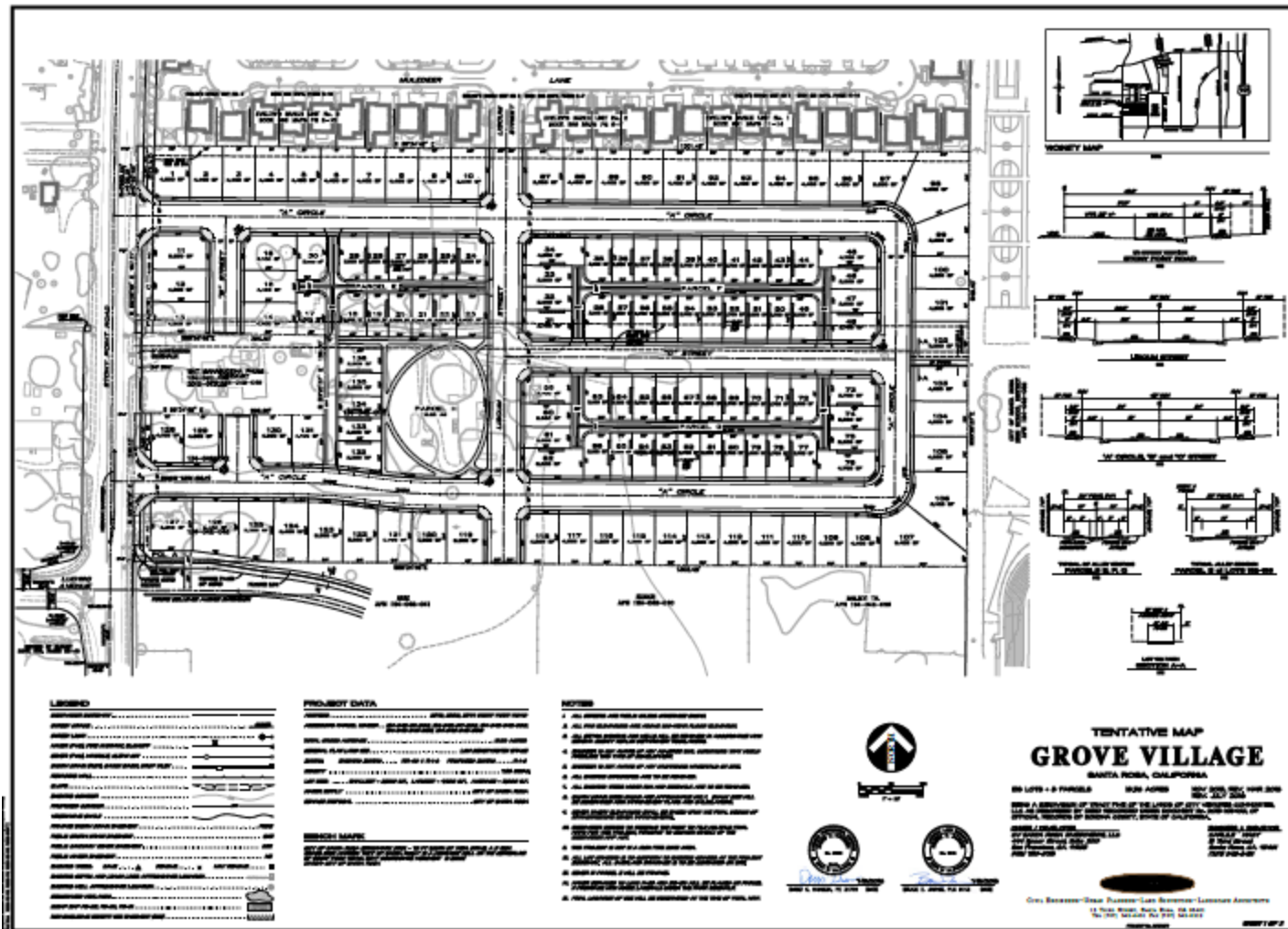
On September 22, 2016, the Planning Commission approved the Grove Village subdivision project.

- Subdivide 18.56 acres into 136 residential lots
- Construct 136 detached dwelling units, 21 of which will provide ADUs
- Mitigated Negative Declaration, Rezoning Conditional Use Permit and Tentative Map

Before the Planning Commission

- One-year Time Extension
- Extended expiration to April 14, 2020

Approved Tentative Map



Grove Village Site – Aerial View

Assessor's Parcel Nos 134-042-011, -017, -042, -043, & -048



Recommendation

It is recommended by the Planning and Economic Development Department that the Planning Commission approve a one-year time extension for the Grove Village Tentative Map, extending the expiration date to September 22, 2020.

Susie Murray, Senior Planner
Planning and Economic Development
smurray@srcity.org
(707) 543-4348

