

South Santa Rosa AT&T (Telecommunications Facility)

440 Hearn Avenue

June 20, 2019

Susie Murray, Senior Planner
Planning and Economic Development

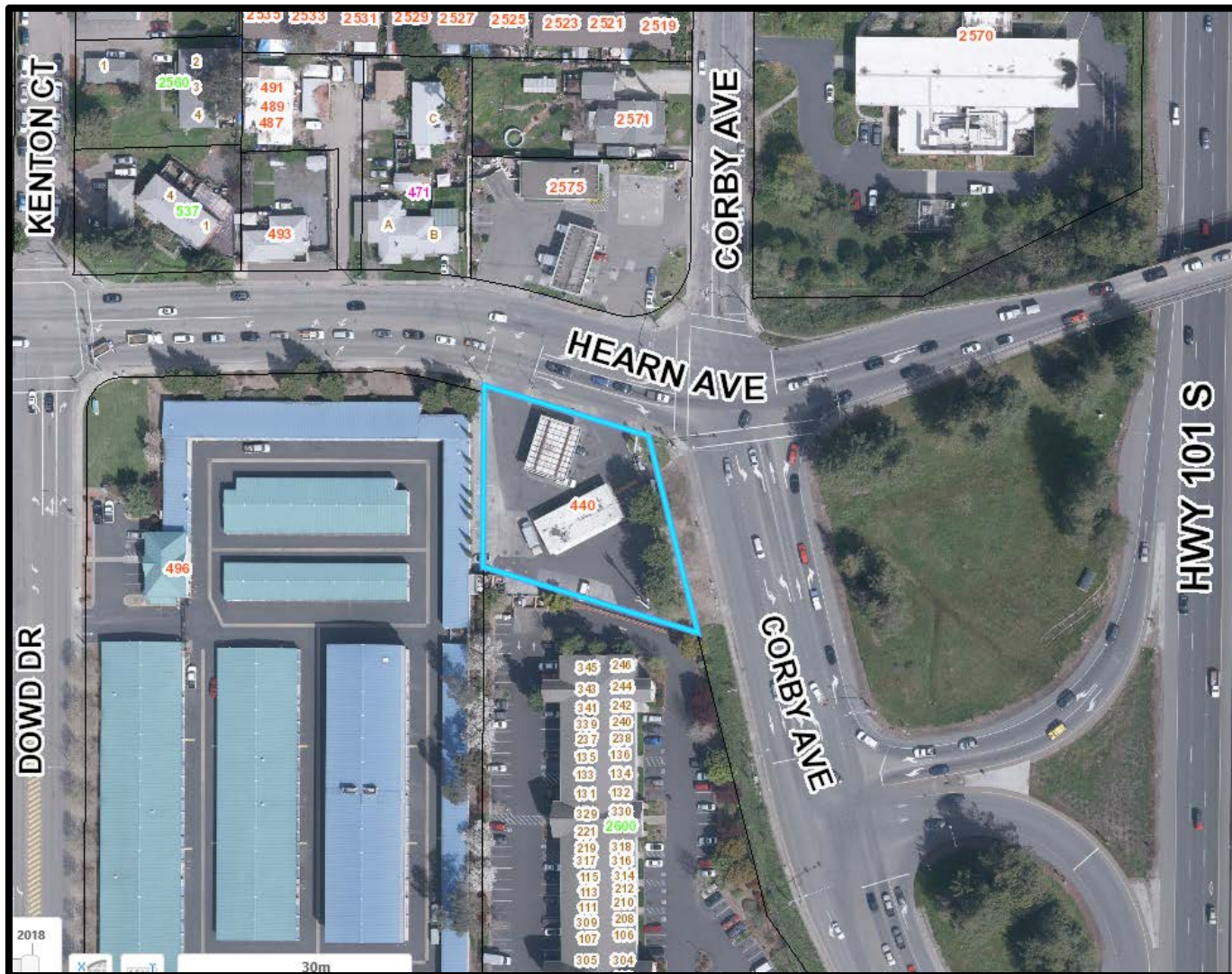
Install a 65-foot Telecommunications Tower designed to look like a tree

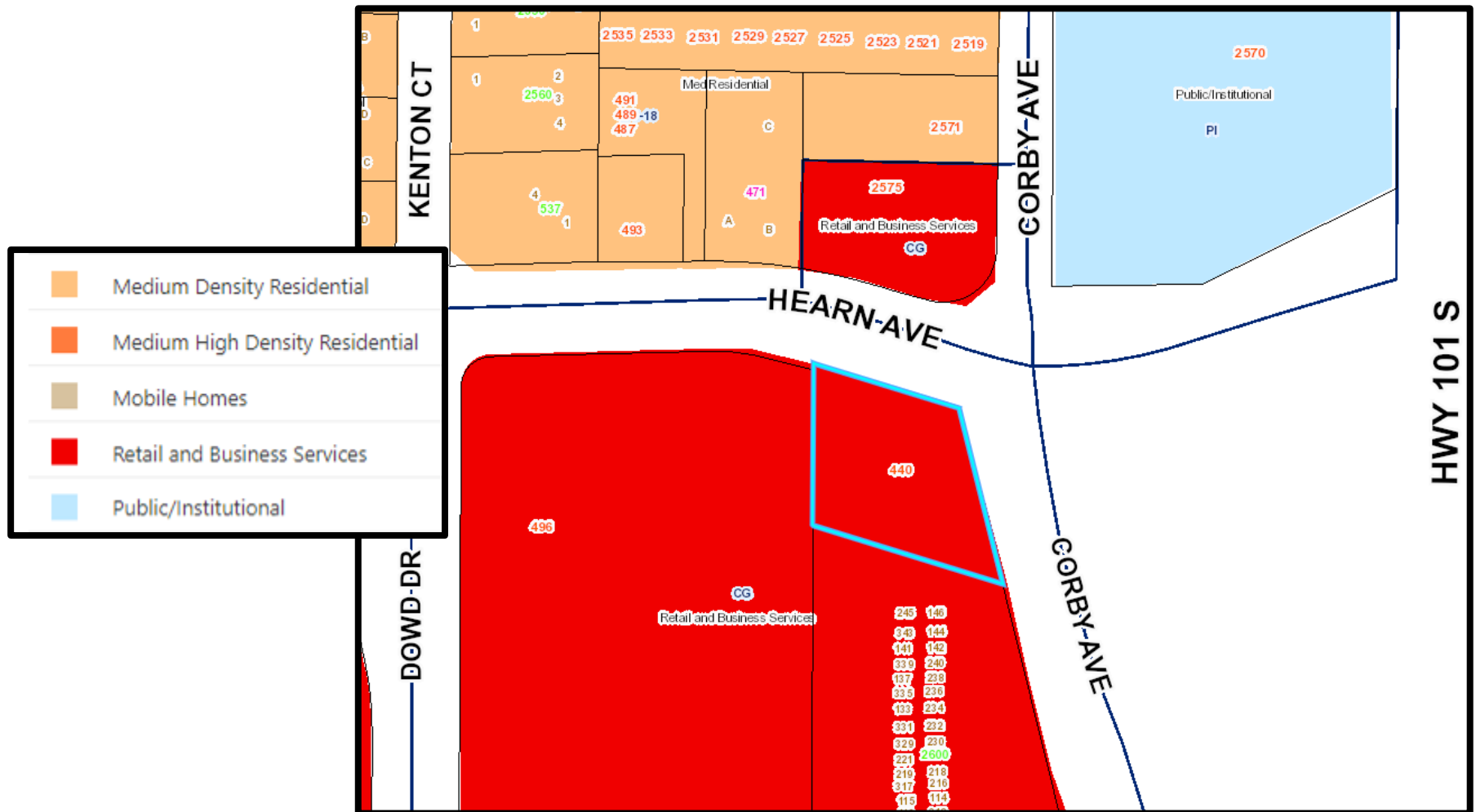
- Eucalyptus or Pine
- Replace an existing mono-pole
- Entitlements
 - Design Review (Design Review Board)
 - Conditional Use Permit (Planning Commission)

440 Hearn Avenue

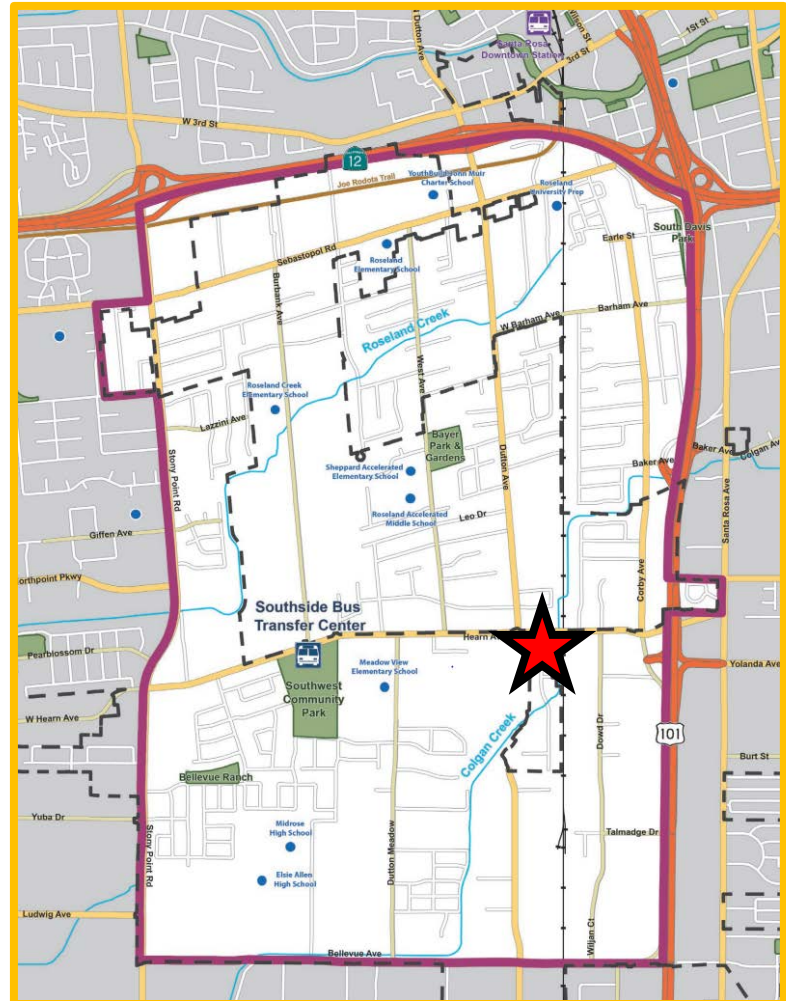


Project Location Address





Roseland Area/Sebastopol Road Specific Plan





The Project has demonstrated compliance with the aesthetic requirements set forth in the Zoning Code:

- Designed to resemble a eucalyptus tree with grey-green foliage;
- Will replace an existing mono-pole Telecommunications Facility;
- Antennas placed at the same elevation as the existing antennas;
- Additional height allows for an alternative faux tree design without impact to AT&T customers; and
- The mono-tree will be placed in the southeast corner of lot behind the existing service station structures and will be partially blocked from view by existing trees on the site.

- March 11, 1999 – Existing Telecommunications Tower approved
- December 5, 2018 – Design Review application
- December 19, 2018 – Conditional Use Permit application; project deemed complete



Eucalyptus Tree Simulation No. 1



Eucalyptus Tree Simulation No. 2



Eucalyptus Tree Simulation No. 3

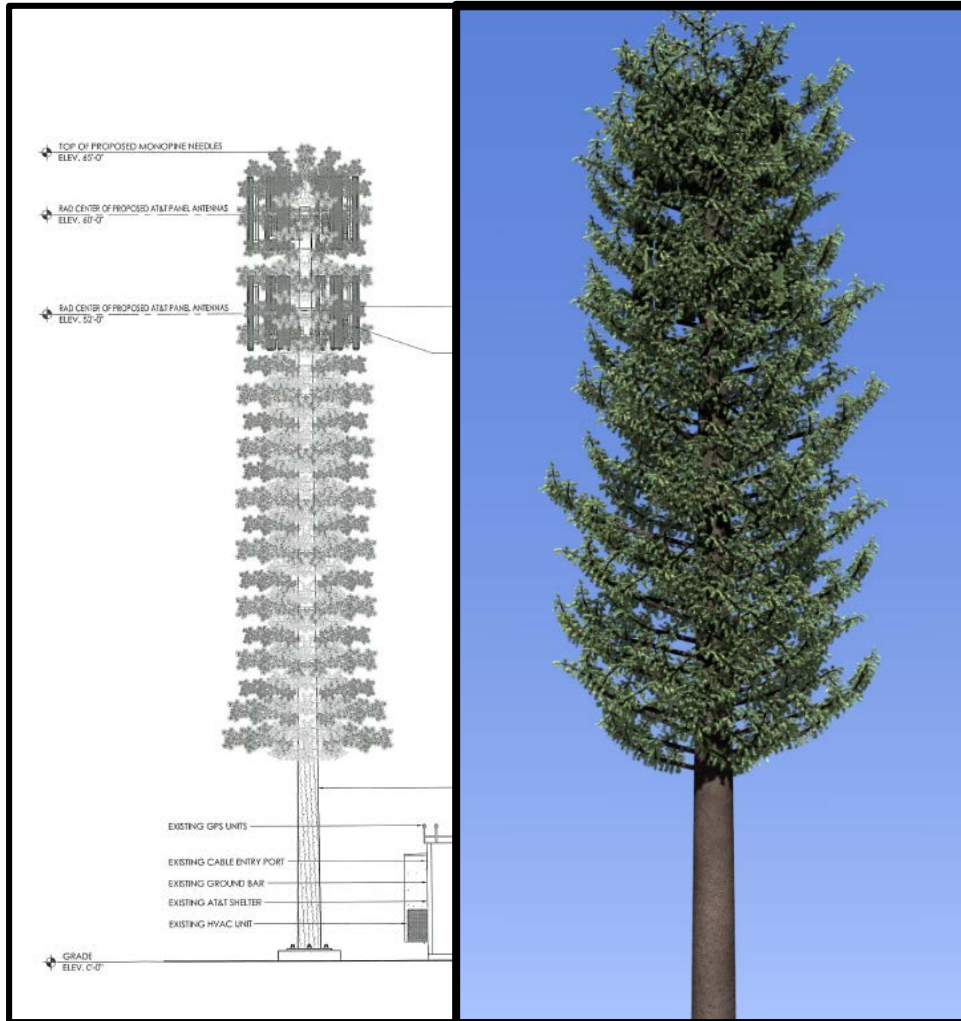


Existing Equipment Enclosure

No changes proposed



Alternative - Pine Tree



Environmental Review

California Environmental Quality Act (CEQA)

The proposed project has been reviewed in compliance with the California Environmental Quality Act (CEQA):

- Section 15302 - Replacement structure
- Section 15303 - Construction of a small structure.

Issues & Public Comments

- No unresolved issues
- No comments received



Recommendation

It is recommended by Planning and Economic Development Department that the Design Review Board grant Preliminary Design Review for a mono-tree Telecommunications Facility, and delegate Final Design Review to staff, for the property located at 440 Hearn Avenue.

Susie Murray, Senior Planner
Planning and Economic Development
smurray@srcity.org
(707) 543-4348

