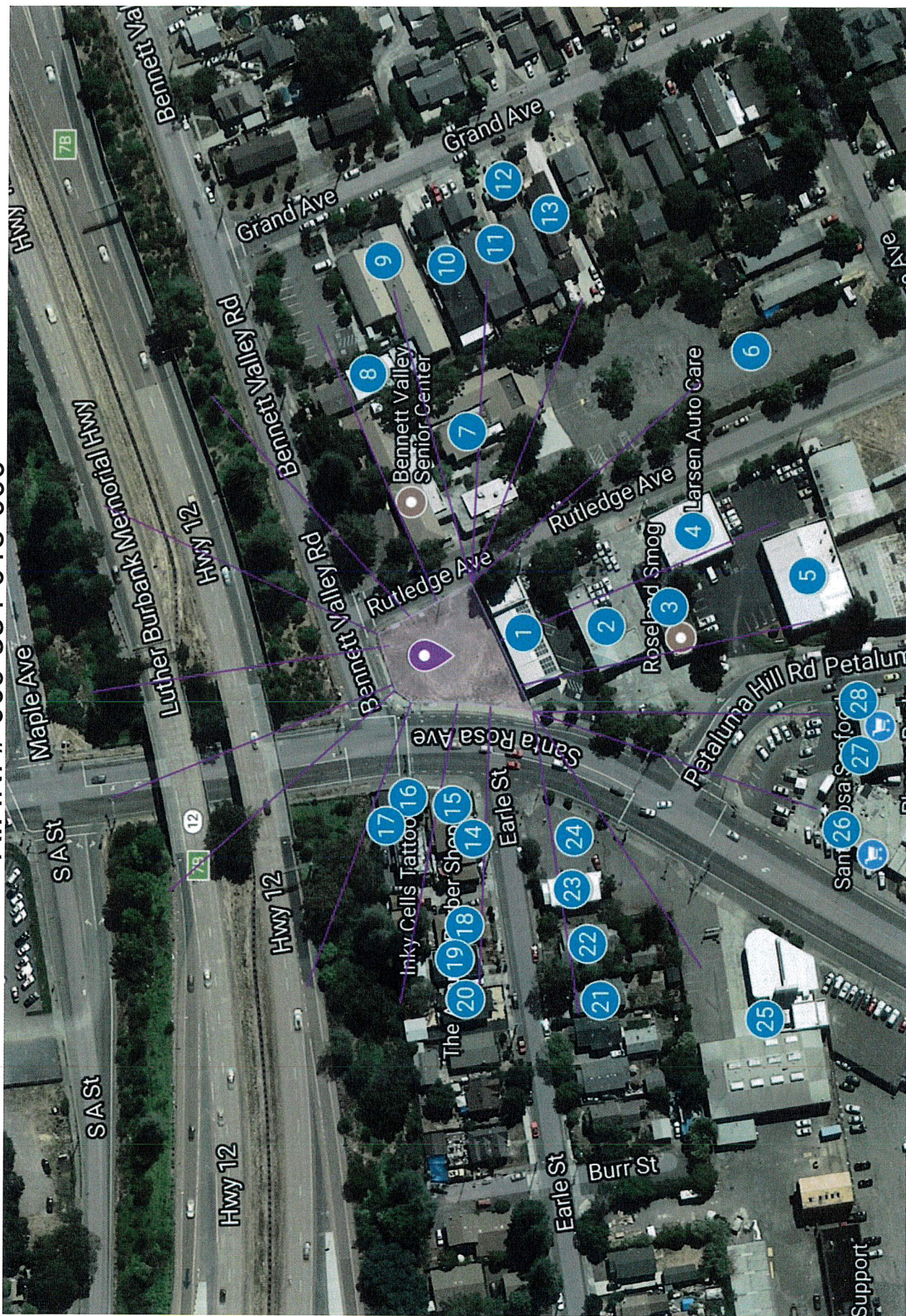
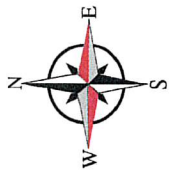


SEP 08 2017

NEIGHBORHOOD CONTEXT MAP - 900 SANTA ROSA AVENUE

Planning & Economic
Development Department

A.P.N. # 009-334-015-000



NEIGHBORHOOD CONTEXT MAP LEGEND
900 Santa Rosa Avenue, Santa Rosa CA 95404
A.P.N. # 009-334-015-000

LEGEND

Uses 300 feet from property boundaries:

1. Sal Auto – 910 Santa Rosa Avenue (Auto Repair) *Zoned PD*
2. European Auto Sales – 920 Petaluma Hill Road (Auto Sales & Repairs) *Zoned PD*
3. Roseland Smog – 930 Petaluma Hill Road (Smog Shop) *Zoned PD*
4. Larsen Auto Care – 940 Santa Rosa Avenue (Auto Repair) *Zoned PD*
5. Marquis Auto Body – 950 Petaluma Hill Road (Auto Body Shop) *Zoned PD*
6. Senior Center Parking Lot – 921 & 927 Rutledge Avenue (City of SR) *Zoned PD*
7. Senior Center – 702 & 704 Bennett Valley Road (City of SR) *Zoned PD*
8. Art Start – 716 Bennett Valley Road (Office Building) *Zoned PD*
9. Medical Office Building – 730 Bennett Valley Road (Commercial) *Zoned CO*
10. Duplex – 913 Grand Avenue (2 Unit Residential) *Zoned PD*
11. Duplex – 917 Grand Avenue (2 Unit Residential) *Zoned PD*
12. Duplex – 921 Grand Avenue (2 Unit Residential) *Zoned PD*
13. Single Family Residential – 925 Grand Avenue (1 Unit Residential) *Zoned PD*
14. Madame Lisa Palm & Card Reader – 827 Santa Rosa Avenue (Store & Residential) *Zoned CG*
15. The Avenue Barber Shop – 825 Santa Rosa Avenue (Store & Residential) *Zoned CG*
16. Inky Cells Tattoo – 821 Santa Rosa Avenue (Store & Residential) *Zoned CG*
17. New York Beauty Salon – 817 Santa Rosa Avenue (Store & Residential) *Zoned CG*
18. Single Family Residential – 525 Earle Street (Residential) *Zoned R-2*
19. Single Family Residential – 519 Earle Street (Residential) *Zoned R-2*
20. Single Family Residential – 515 Earle Street (Residential) *Zoned R-2*
21. Single Family Residential – 516 Earle Street (Residential) *Zoned R-2*
22. Single Family Residential – 518 Earle Street (Residential) *Zoned R-2*
23. Single Family Residential – 526 Earle Street (Residential) *Zoned R-2*
24. Vacant / Parking Lot – 901 Santa Rosa Avenue (Vacant Land) *Zoned CG*
25. GSTuning – 955 Santa Rosa Avenue (Auto Repair) *Zoned CG*
26. Santa Rosa Seafood – 952 Santa Rosa Avenue (Store & Restaurant) *Zoned CG*
27. Phnom-Penh Oriental Grocery – 923 Petaluma Hill Road (Store) *Zoned CG*
28. Multi-Family Residential Units – 925 Petaluma Hill Road (Multi-Family) *Zoned CG*