

Carpenter Urban Cottages Landmark Alteration Permit

25 Rae & 715 Tupper Streets

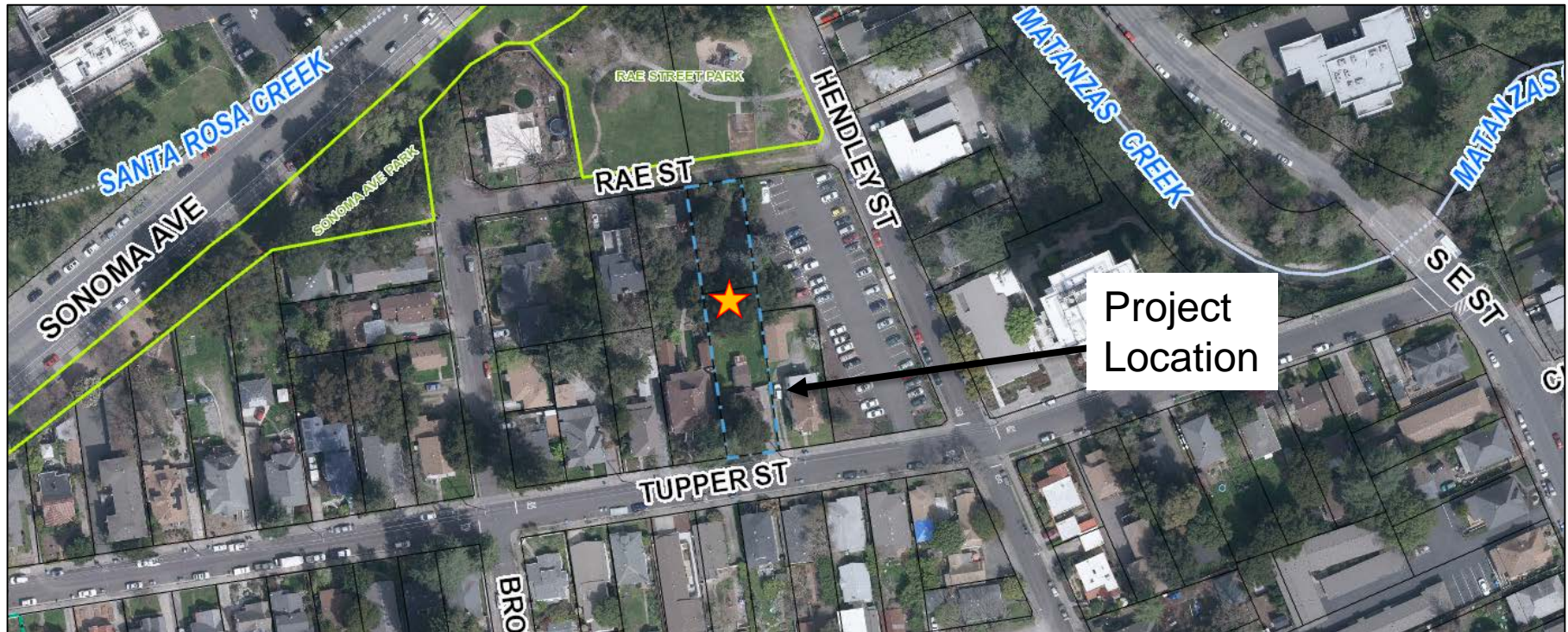
August 7, 2019

Kristinae Toomians
Senior Planner
Planning and Economic Development

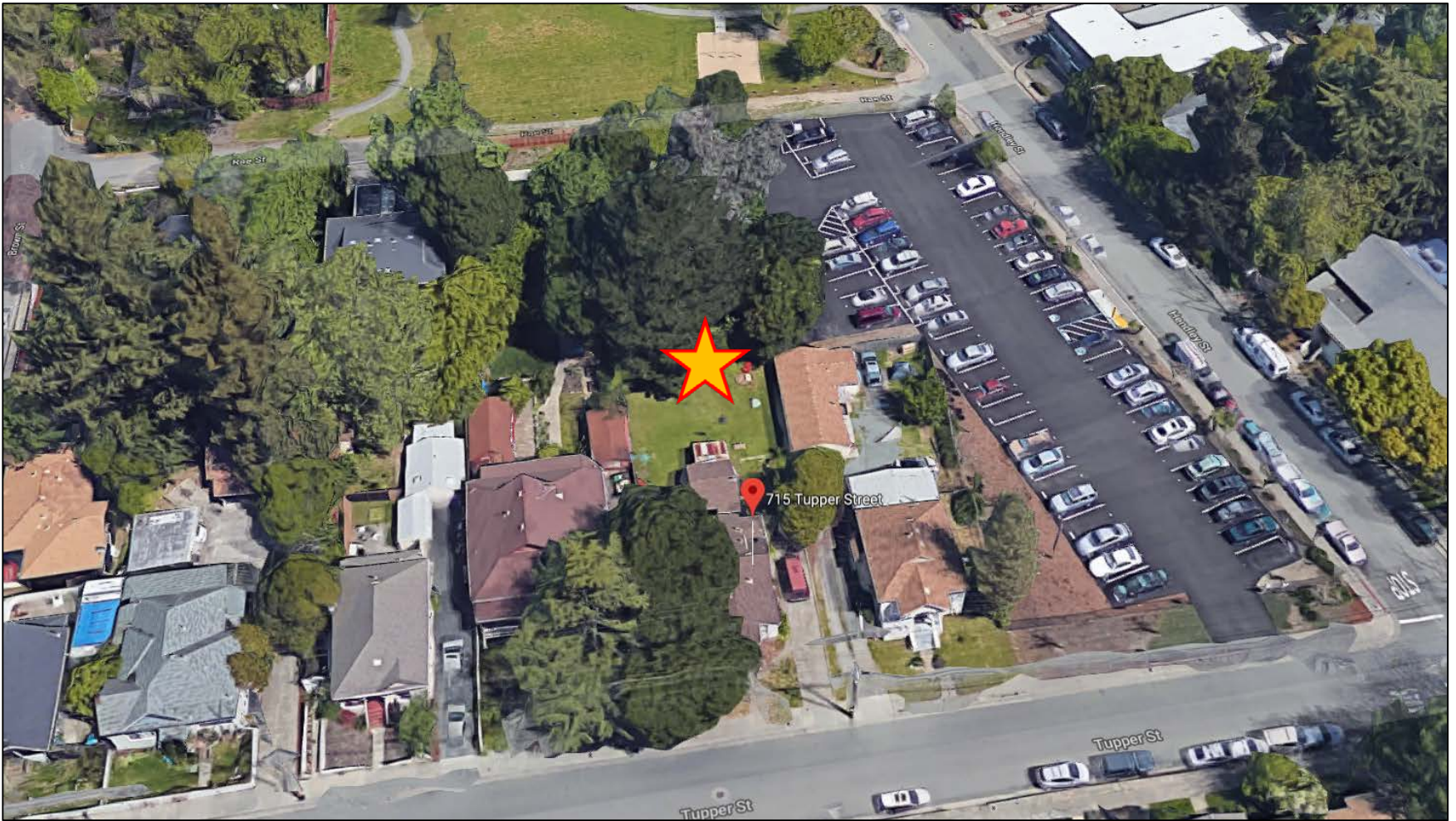
Major Landmark Alteration Permit to:

- Demolish a detached 325-square-foot rear accessory structure, and construct two pairs of duplex units (multi-family units), connected by covered carports, behind an existing 821-square-foot dwelling.

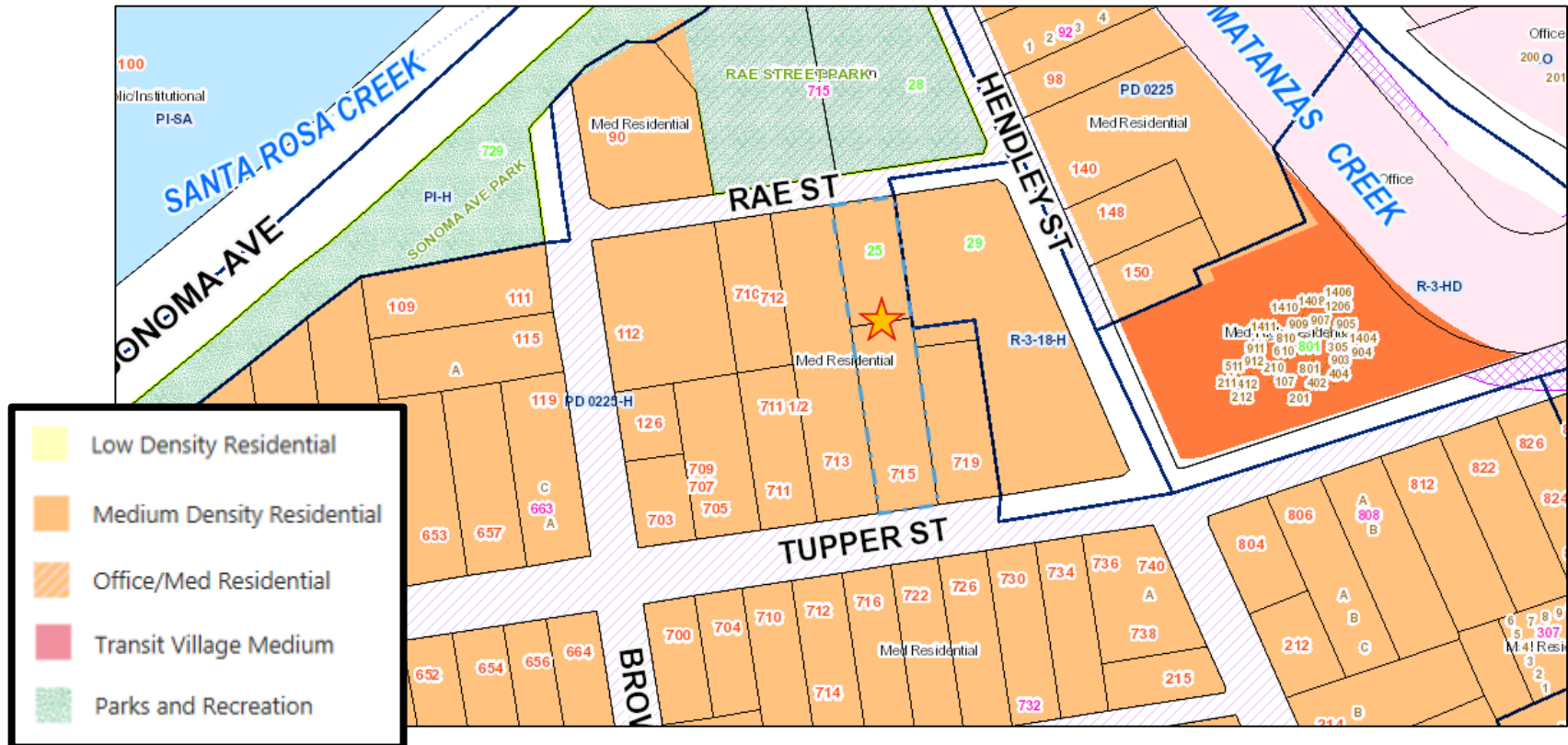
715 Tupper & 25 Rae Streets

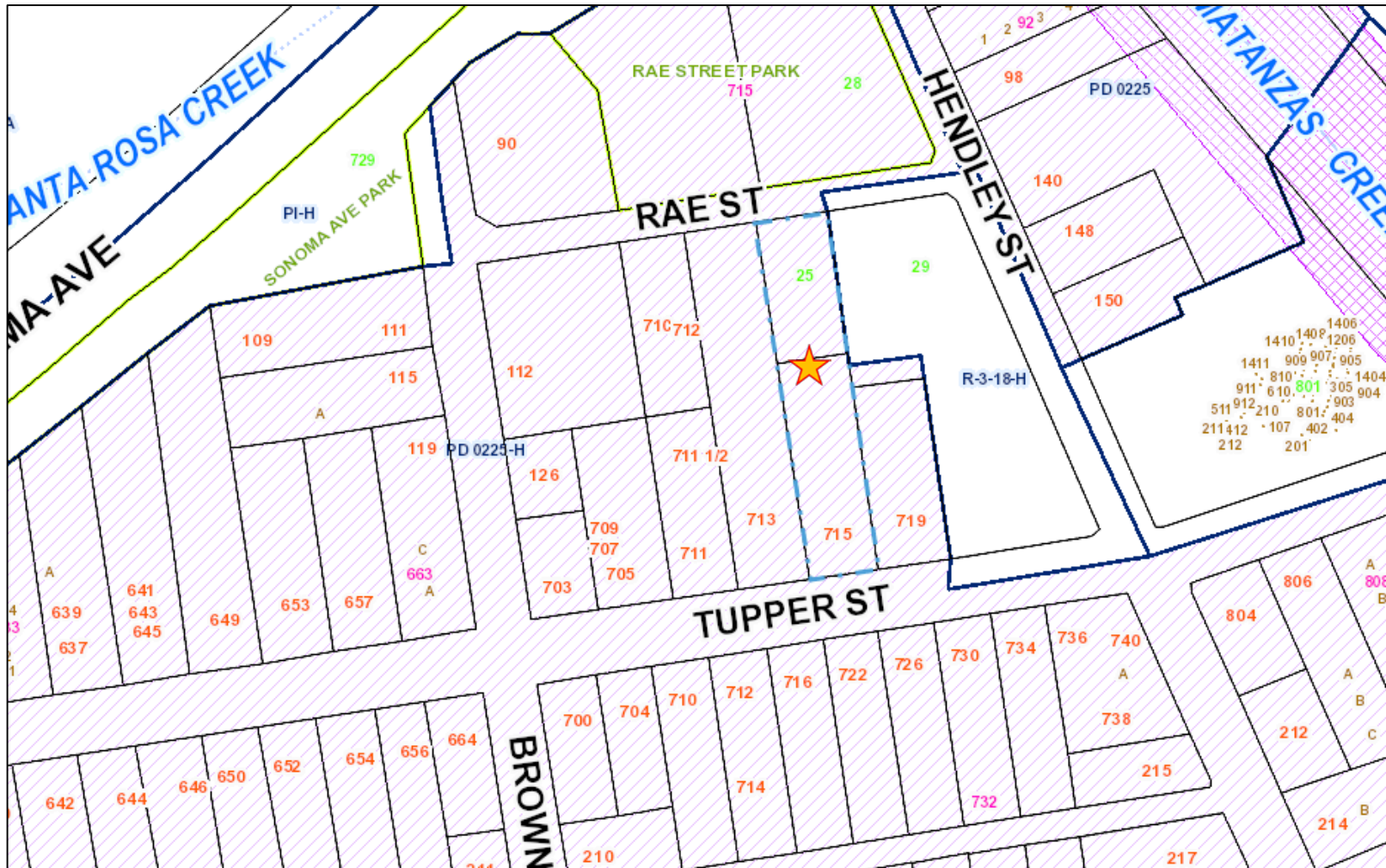


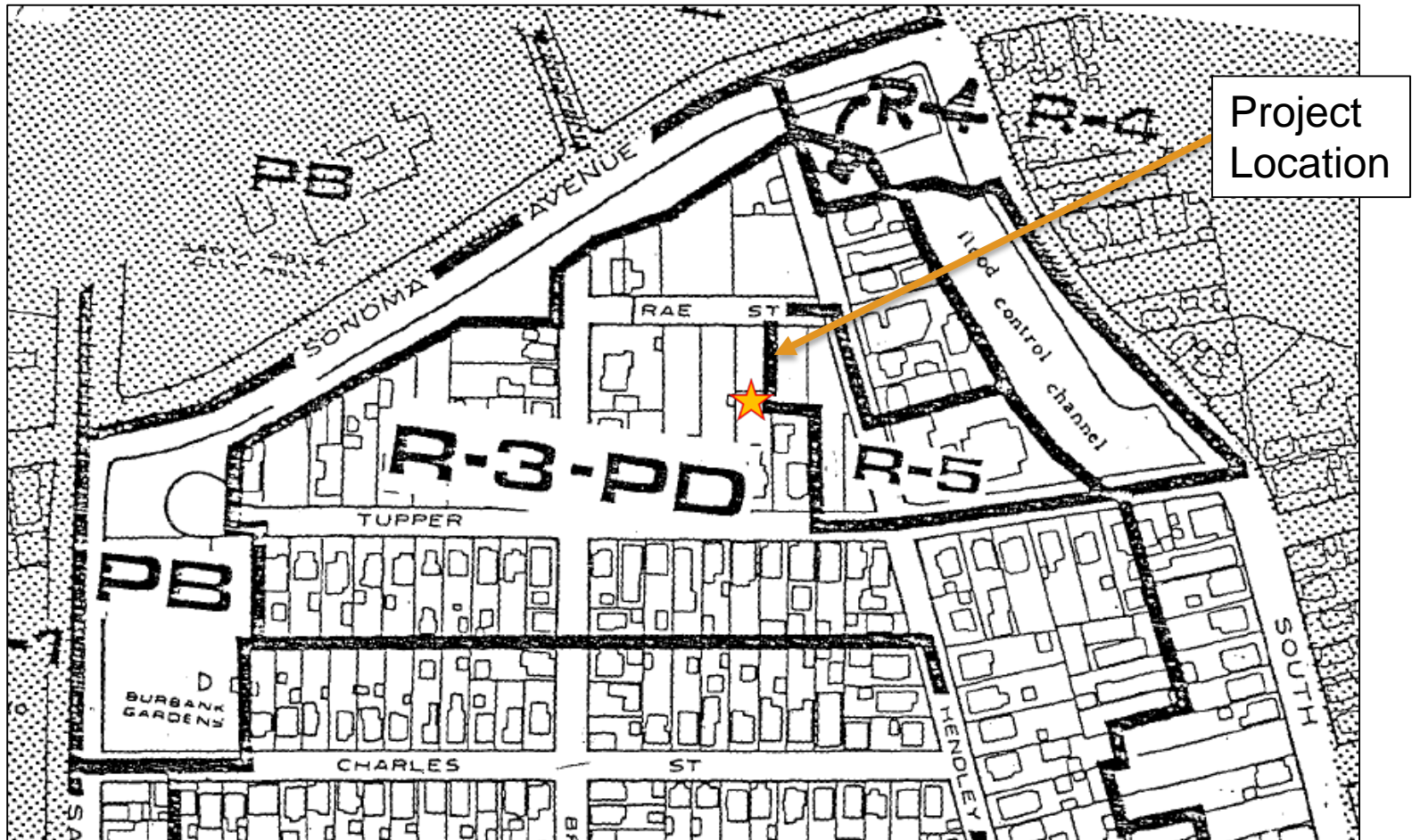
715 Tupper & 25 Rae Streets



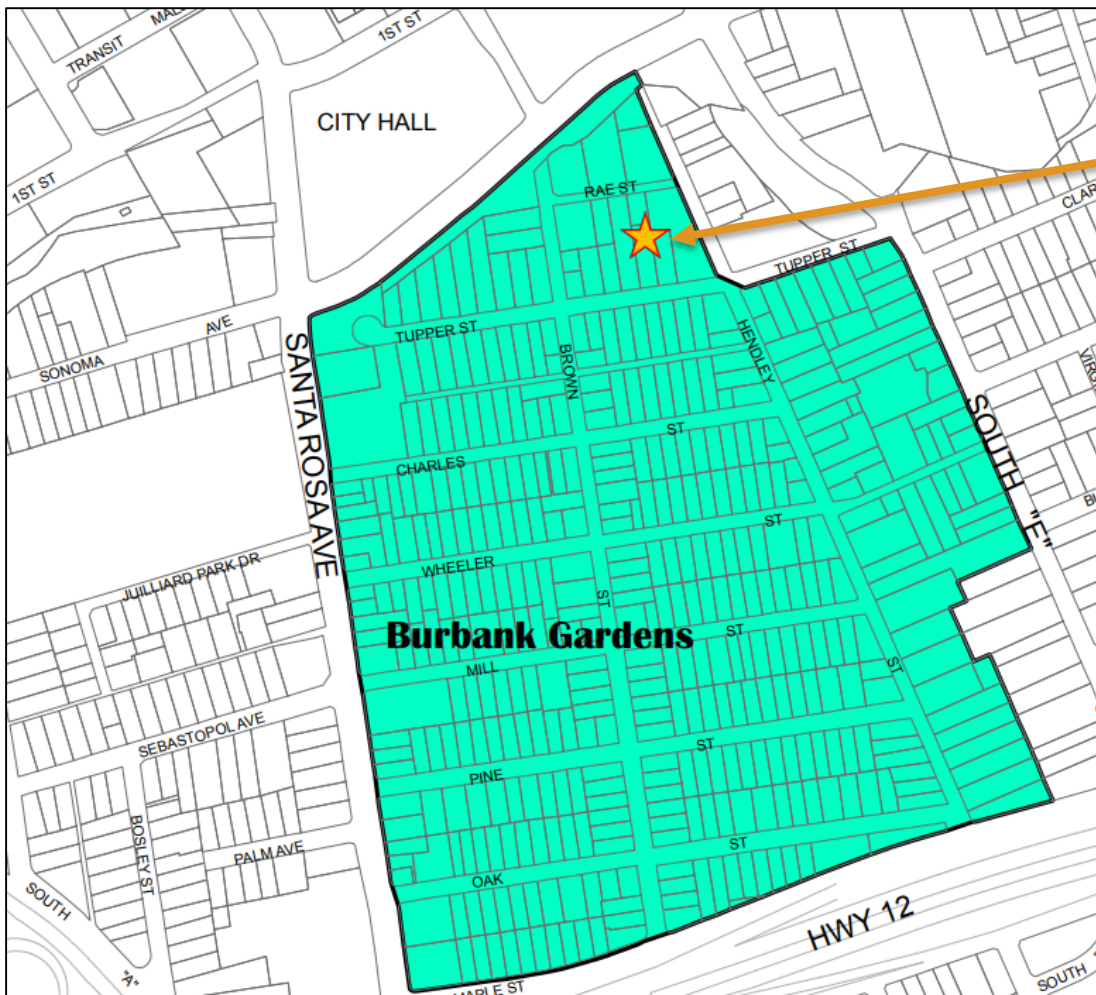
715 Tupper & 25 Rae Streets







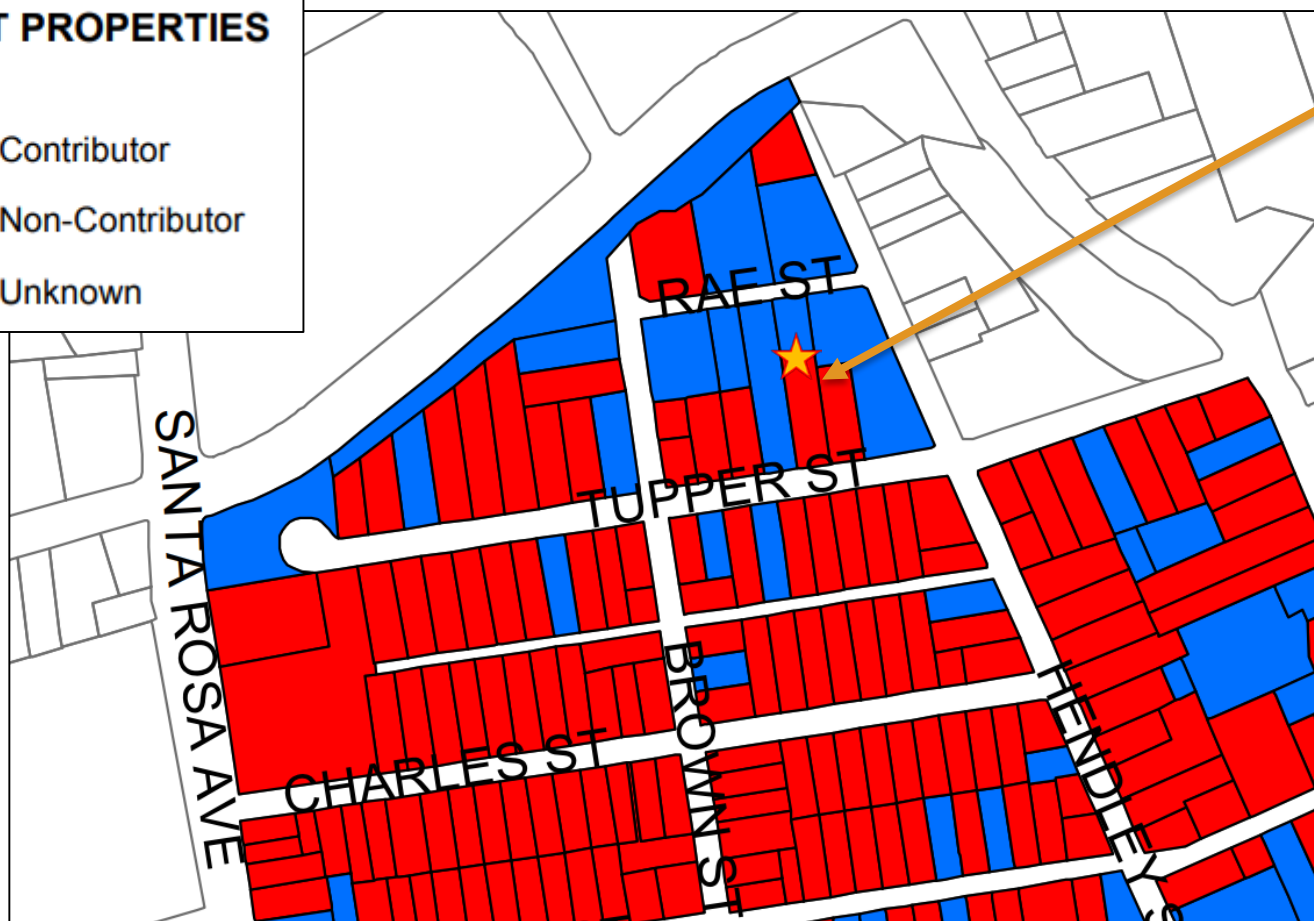
Burbank Gardens Preservation District



Project
Location

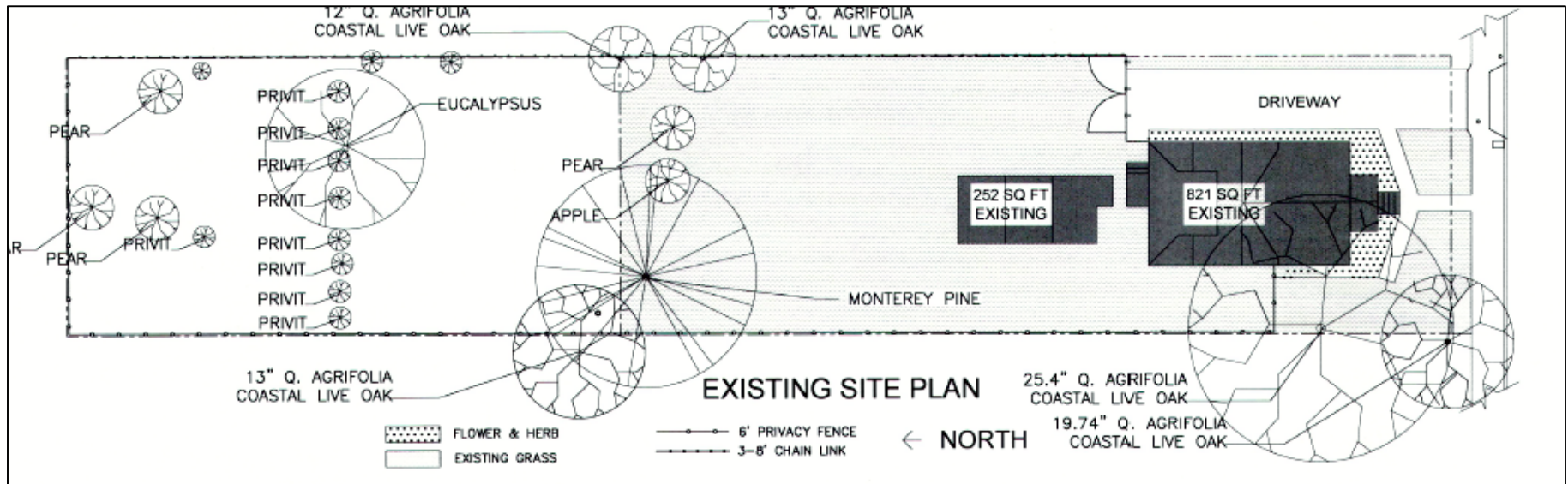
Contributor Analysis

HISTORIC PRESERVATION DISTRICT PROPERTIES

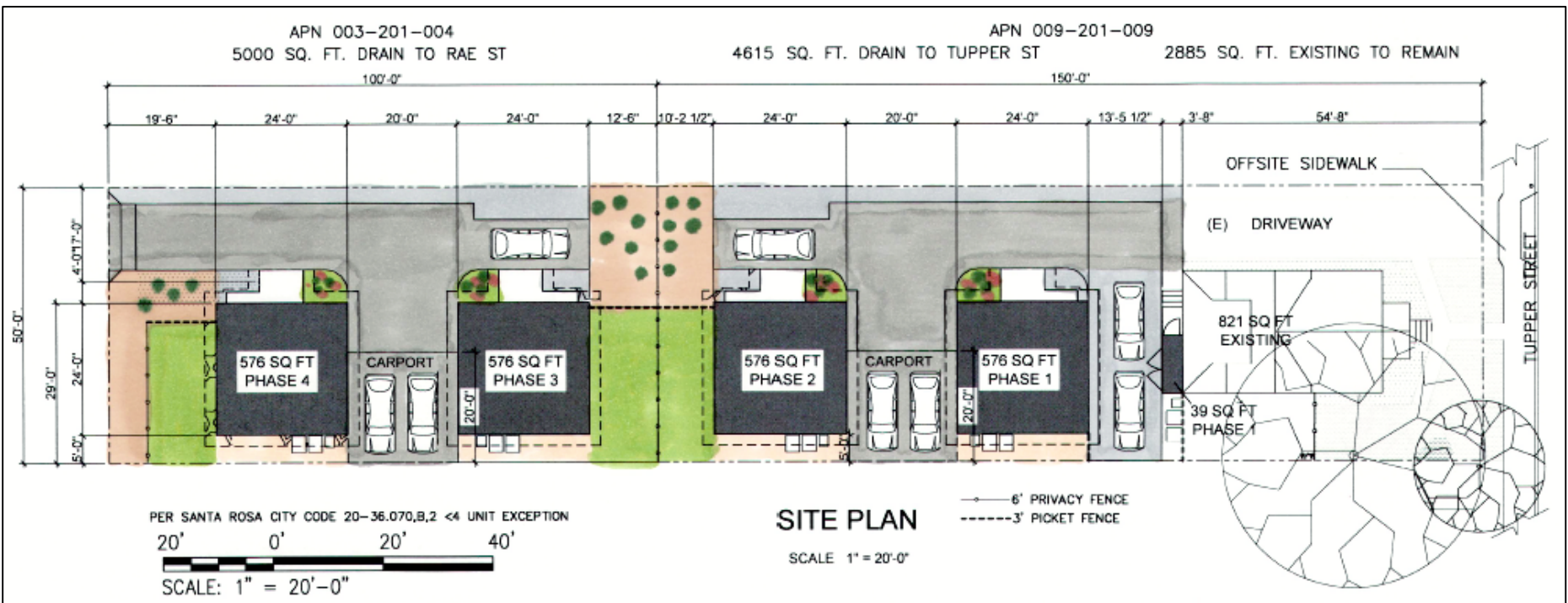


Project
Location

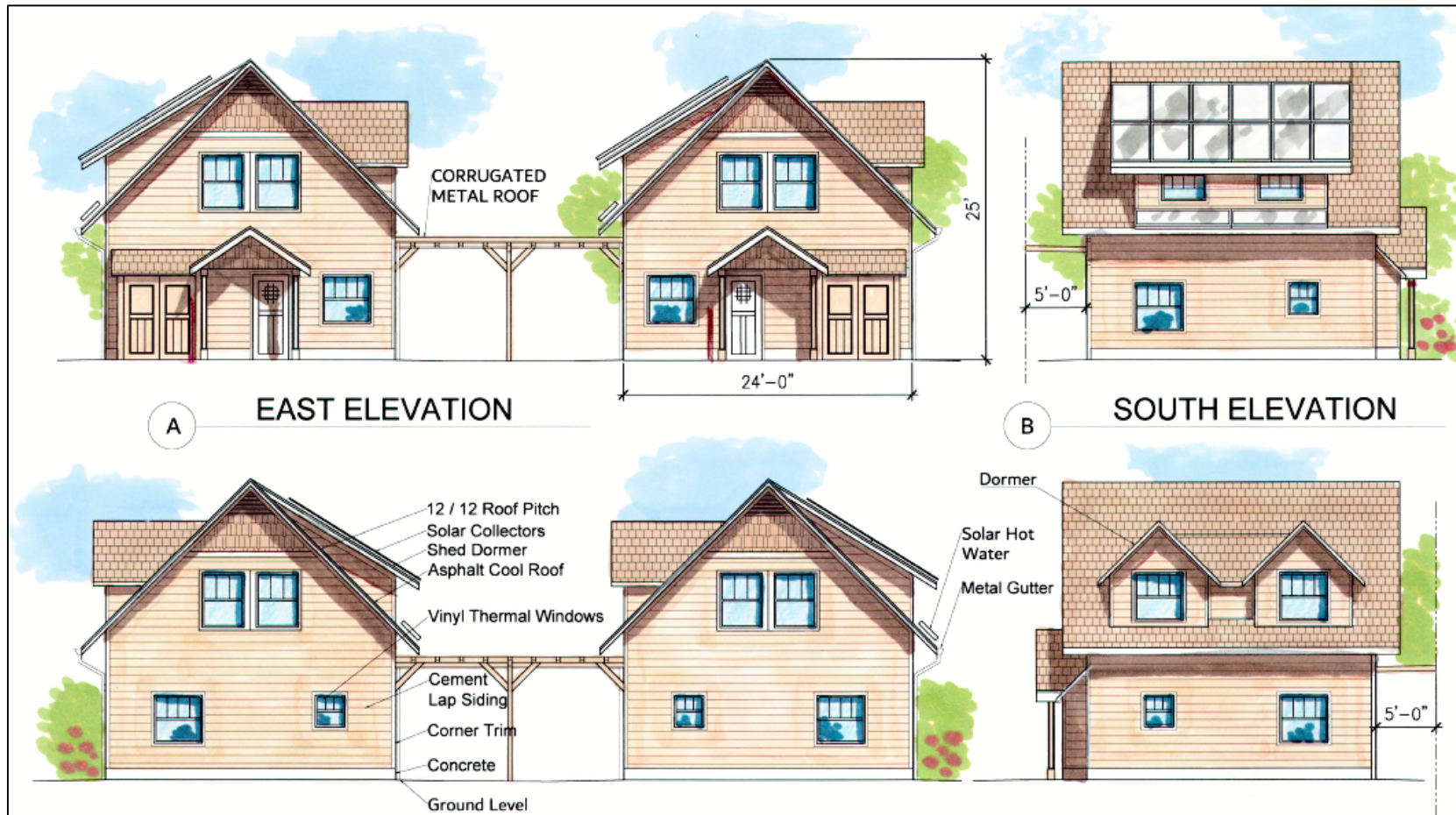
Existing Site Plan



Proposed Site Plan







Kristinae Toomians
Senior Planner
Planning and Economic Development
KToomians@srcity.org
(707) 543-4692

