

Skyfarm Unit 3 Time Extension

3875 and 3931 Saint Andrews Drive
APNs 173-760-062 and 173-760-038

September 12, 2019

Shari Meads, City Planner
Planning and Economic Development

On August 11, 2011, the Planning Commission approved the Skyfarm Unit 3 subdivision project.

- Subdivide 10.4 acres into 30 residential lots and three common parcels
- Mitigated Negative Declaration, Conditional Use Permit, Hillside Development Permit, and Tentative Map

Before the Planning Commission:

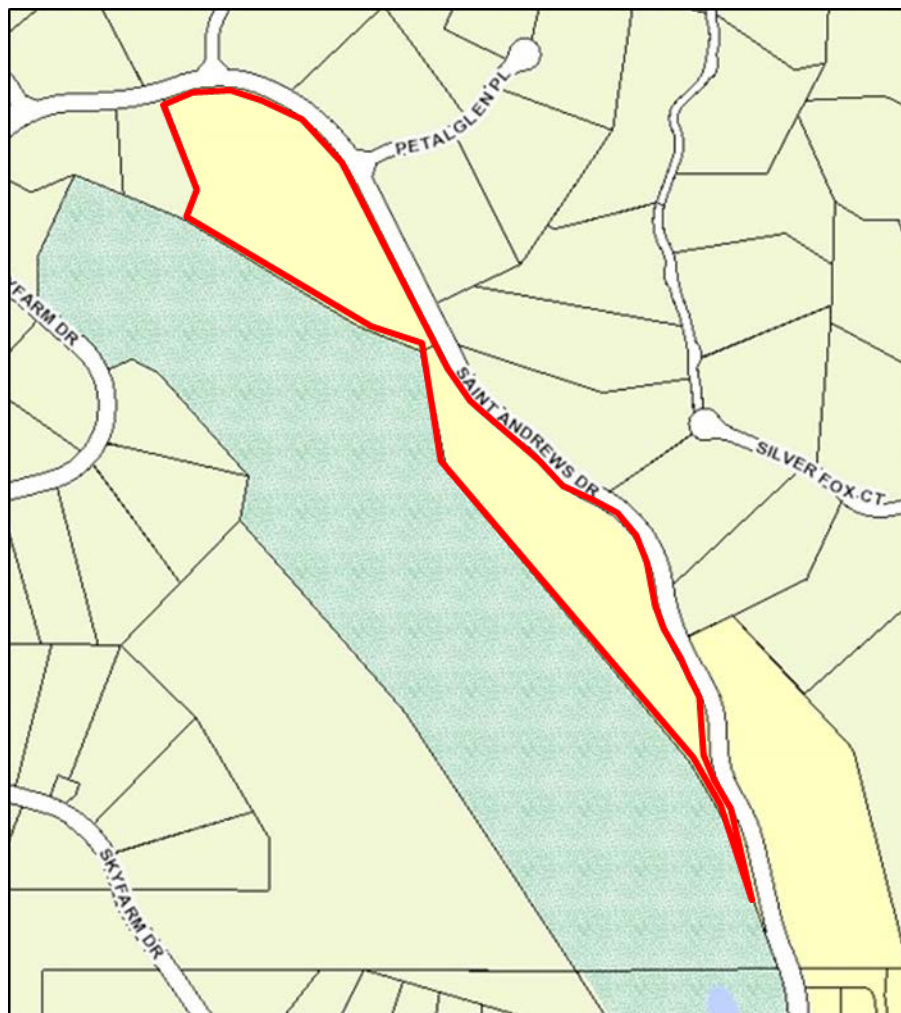
- Two one-year time extensions (third and fourth)
- Extend expiration to August 11, 2019
- Pursuant to City of Santa Rosa ORD-2019-001, would allow the applicant until August 11, 2020, to record the Final Map.

Skyfarm Unit 3 Neighborhood Context



Skyfarm Unit 3

General Plan and Zoning



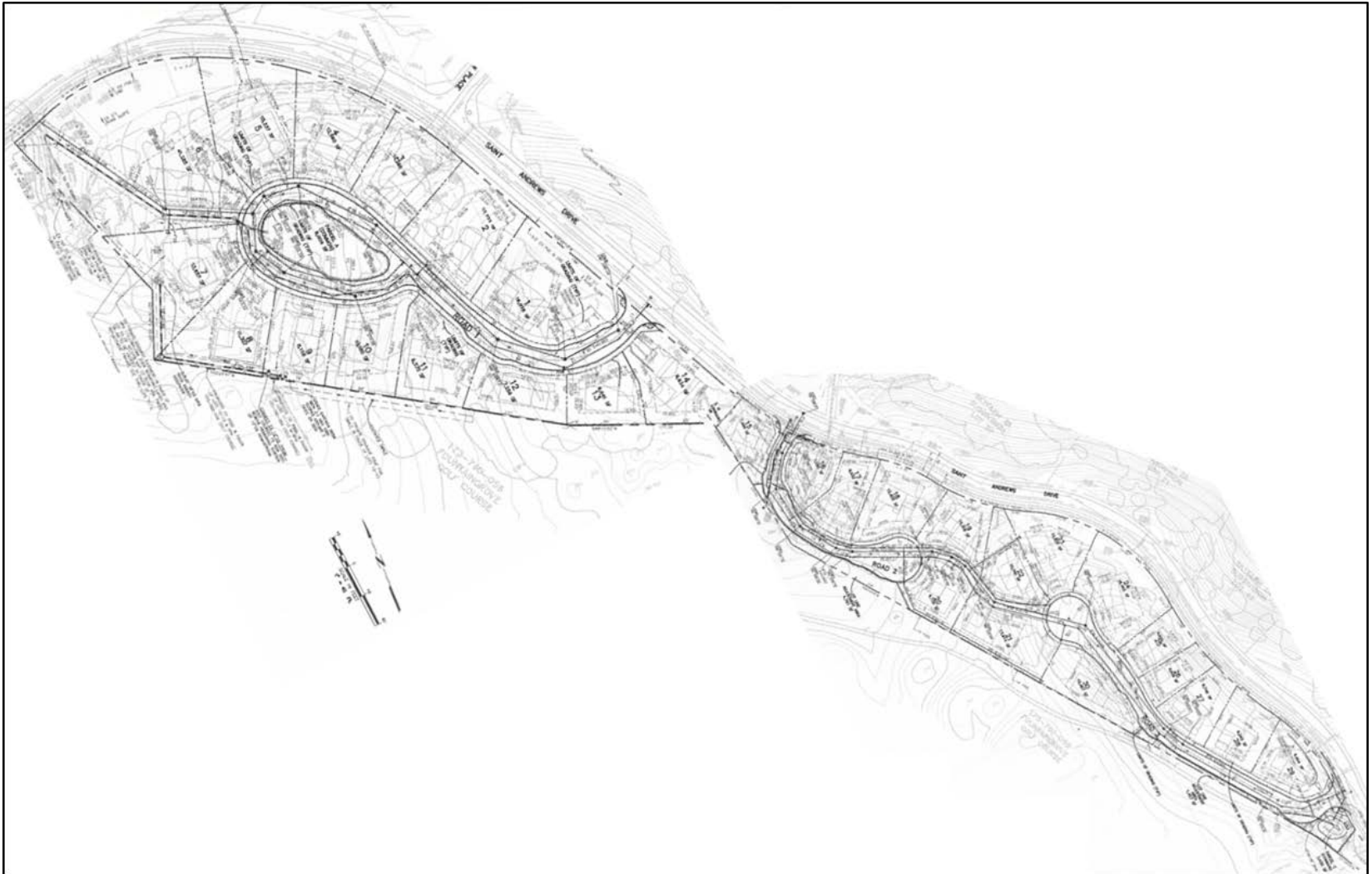
Zoning

Planned Development

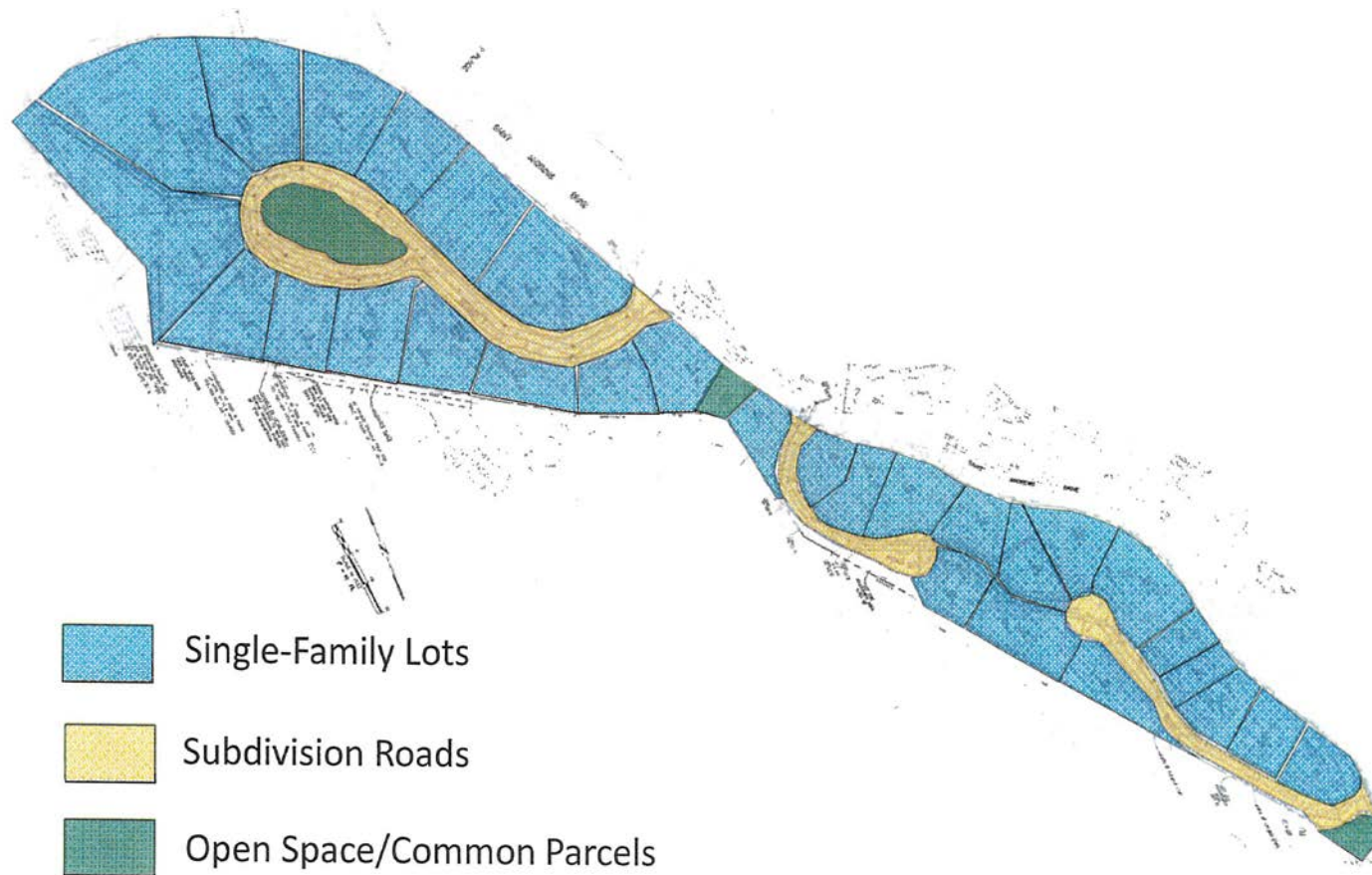
General Plan

Low Density Residential
(2.0–8.0 units per acre)

Skyfarm Unit 3 Approved Tentative Map



Skyfarm Unit 3 Approved Tentative Map



The Planning and Economic Development Department recommends that the Planning Commission approve two one-year time extensions for the Skyfarm Unit 3 Tentative Map. Approval of the requested time extensions together with a one-year time extension provided under Santa Rosa ORD-2019-001 would allow the applicant until August 11, 2020, to record the Final Map.

Shari Meads, City Planner
Planning and Economic Development
smeads@srcity.org
(707) 543-4665

