

Public Safety Power Shut-off (PSPS)

BPU

September 19, 2019

Joe Schiavone

Deputy Director Water Operations

What is a PSPS?



PSPS

While no single factor will drive a Public Safety Power Shutoff, some factors include:



A RED FLAG WARNING

declared by the National Weather Service



LOW HUMIDITY LEVELS

generally 20% and below



FORECASTED SUSTAINED WINDS GENERALLY ABOVE 25 MPH AND WIND GUSTS IN EXCESS OF APPROXIMATELY 45 MPH

, depending on location and site-specific conditions such as temperature, terrain and local climate



CONDITION OF DRY FUEL

on the ground and live vegetation (moisture content)



ON-THE-GROUND, REAL-TIME OBSERVATIONS

from PG&E's WSOC and field observations from PG&E crews



OUR FUTURE IN EVERY DROP

Impacts to our Water, Sewer, and Regional Systems



PG&E Notifications

- 48 hours prior to shutting power off
- 24 hours prior to shutting power off
- JUST BEFORE power is shut off
- DURING THE PUBLIC SAFETY OUTAGE
- OUNCE POWER HAS BEEN RESTORED

Preparation/Impact Mitigation

- Regional Operations
- Local Operations
- Private Systems



Regional Operations



Laguna Treatment Facility

- Generator Power
 - 2 – 2 Megawatt
 - 4 – 1.1 Megawatt CHP Units
- 15,000 gal Diesel Fuel Capacity



Geysers Operations



Local Operations

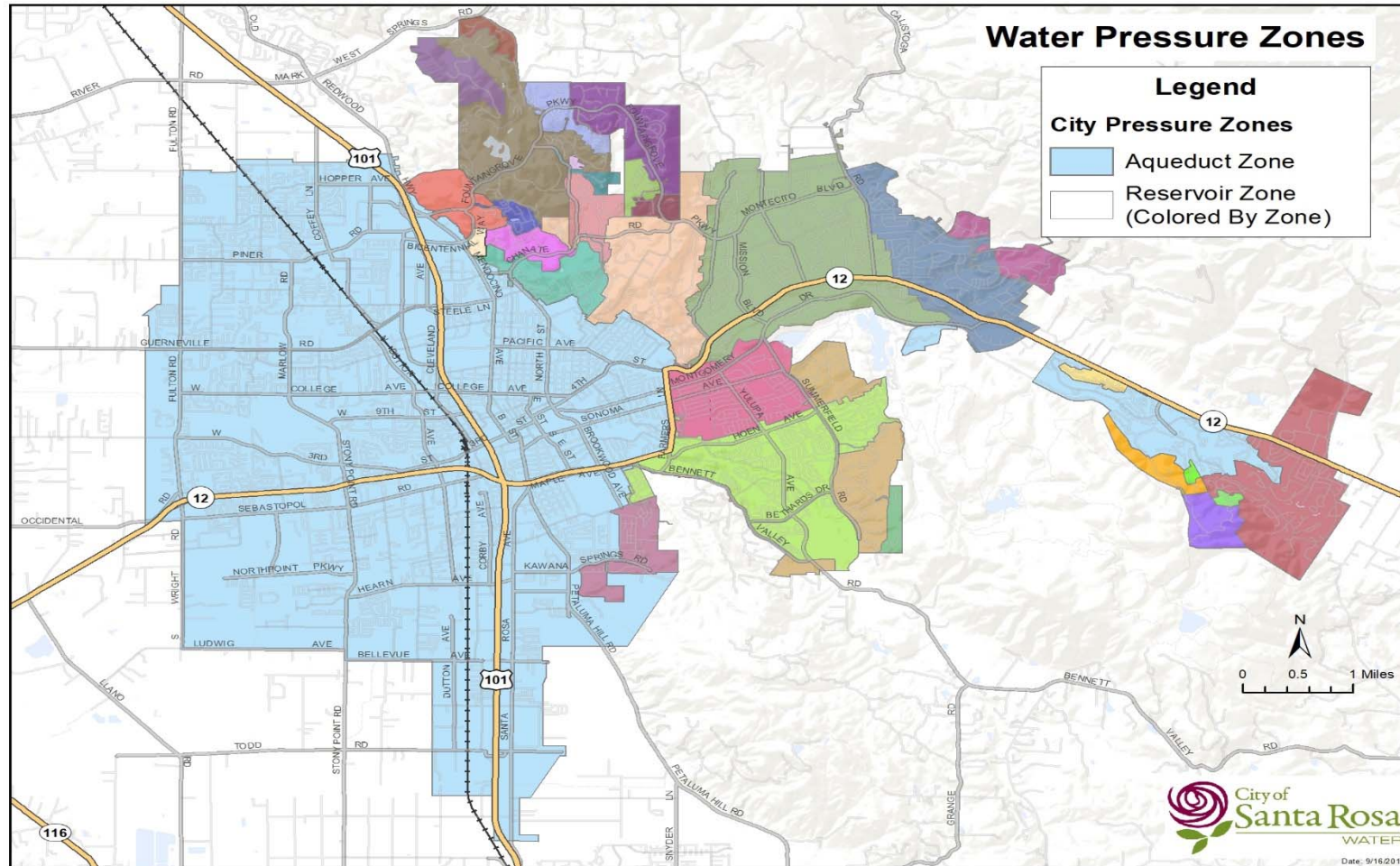
- Water Distribution System
- Sewer Collection System
- Facilities



Water Supply



Water Distribution System



Water Reservoirs



Water Pump Stations



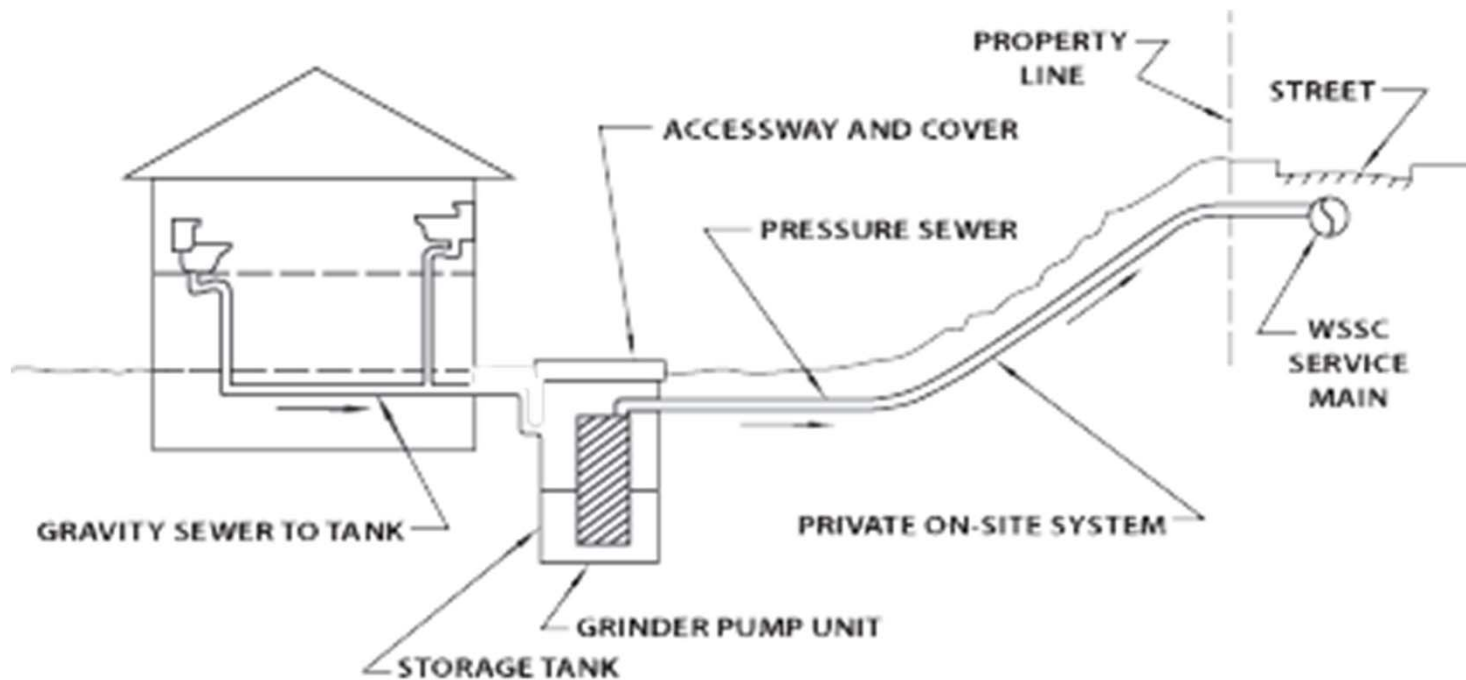
Sewer Collection System



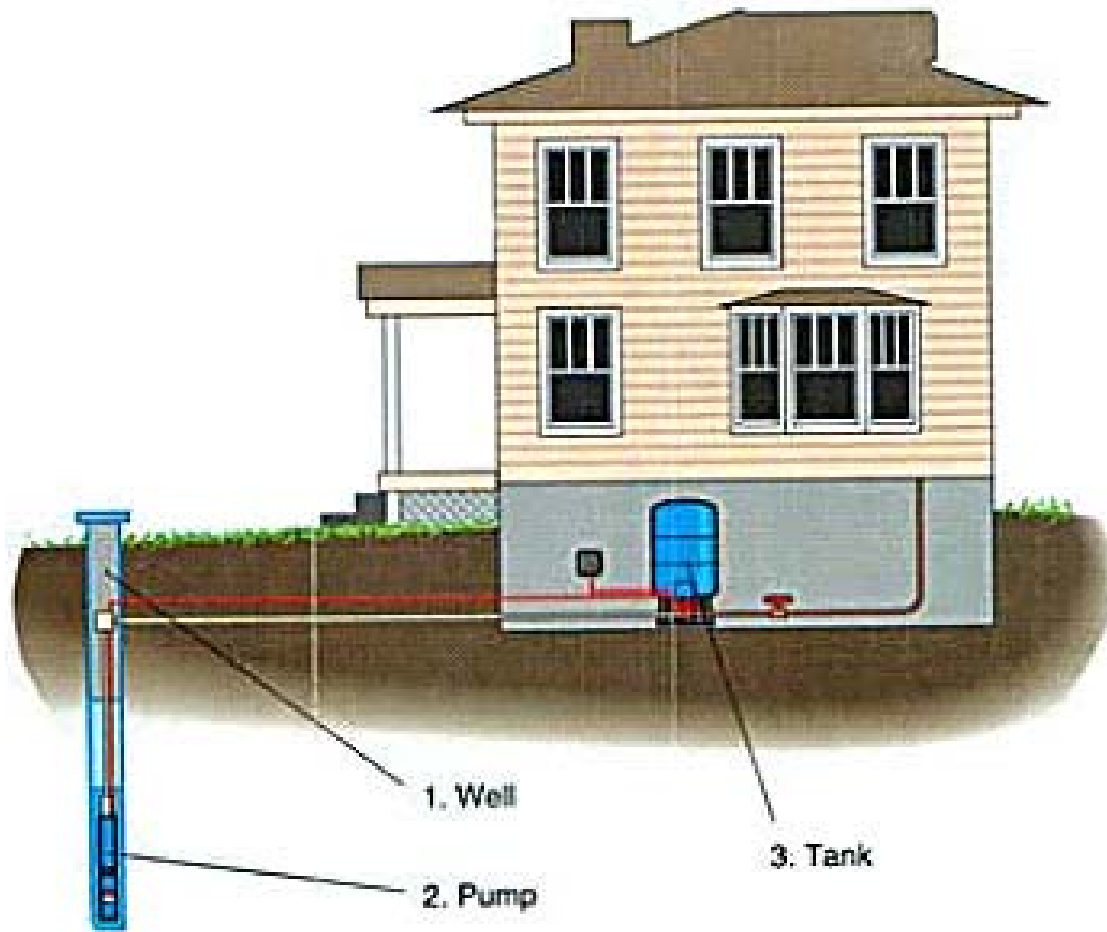
Facilities



Private Systems Water and Sewer Pumps



Private wells



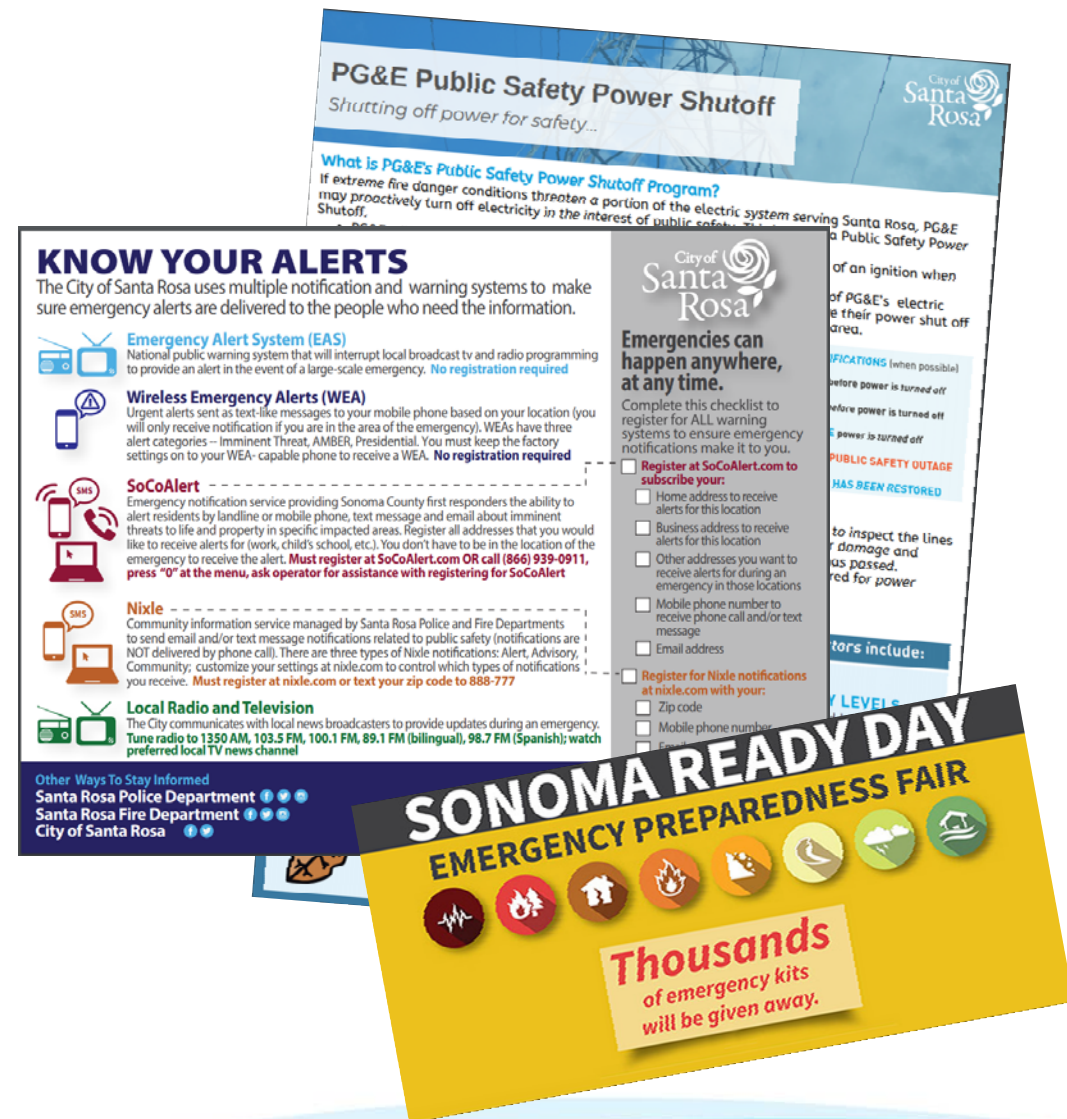
Communication & Outreach

Resources

- pge.com/psps
- srcity.org/emergency

Know Your Alerts

- Sign-up for SoCo Alert
SoCoAlert.com or call
866-939-0911
- Bill Insert - July/August
- **Sonoma Ready Day**
- September 8, 2019



Questions



OUR FUTURE IN EVERY DROP