



SMALL PATIO TERRACE



RESTING POINTS WITH BENCHES



STAMPED ASPHALT ACCENTS



PERMEABLE GRANITECRETE PAVING



TRELLIS IN COURTYARD



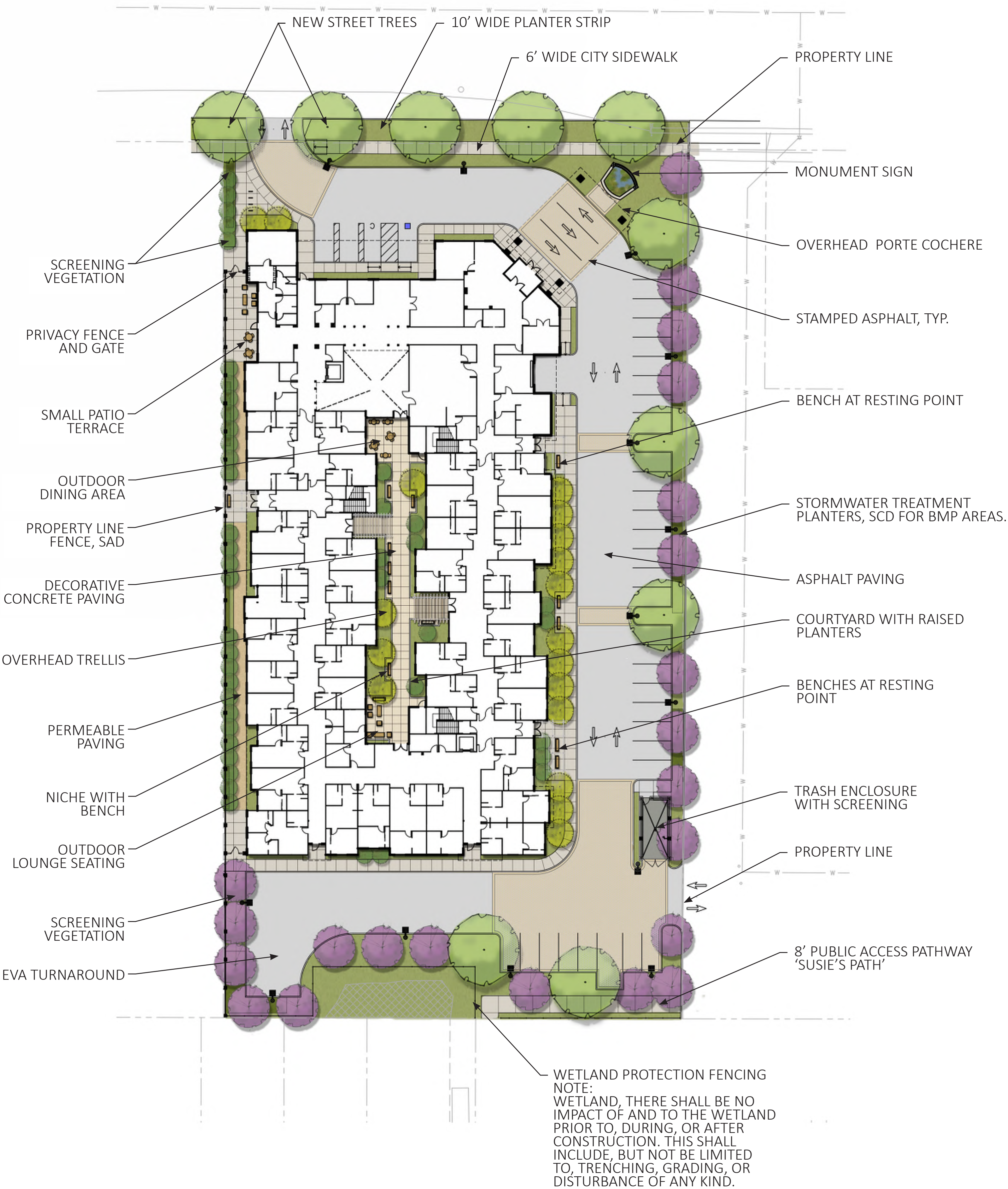
PROPERTY LINE FENCE/PRIVACY WALL



COURTYARD WITH RAISED PLANTERS



STREET TREES



PRELIMINARY PLANT LIST

SYMBOL	BOTANICAL NAME	COMMON NAME
TREES		
	ACER MACROPHYLLUM	BIGLEAF MAPLE
	PLATANUS ACERIFOLIA 'COLUMBIA'	LONDON PLANE TREE
	QUERCUS AGRIFOLIA	COAST LIVE OAK
FLOWERING ACCENT TREES		
	LAGERSTROEMIA 'MUSKOGEE'	LAVENDER CRAPE MYRTLE
	CERCIS CANADENSIS 'FOREST PANSY'	FOREST PANSY REDBUD
SCREEN SHRUBS		
	ARCTOSTAPHYLOS 'HOWARD McMINN'	MANZANITA
	CEANOTHUS RAY HARTMAN	RAY HARTMAN WILD LILAC
	PRUNUS ILICIFOLIA	CATALINA CHERRY
SHRUBS & GRASSES		
	KNIPHOFIA UVARIA 'BLAZE'	RED HOT POKER
	LIBERTIA PEREGRINANS	ORANGE LIBERTIA
	LIMONIUM PEREZII	SEA LAVENDER
	ROSA 'SEA FOAM'	GROUNDCOVER ROSE
	ROSMARINUS 'TUSCAN BLUE'	ROSEMARY
GROUNDCOVERS		
	ARCTOSTAPHYLOS 'EMERALD CARPET'	MANZANITA
	MAHONIA REPENS	CREeping MAHONIA
VINES		
	DISTICTIS BUCCINATORIA	BLOOD RED TRUMPET VINE
	HARDENBERGIA VIOLACEA	PURPLE VINE LILAC
STORMWATER		
	CAREX DIVULSA	BERKELEY SEDGE
	CHONDROPETALUM TECTORUM	CAPE RUSH
	LOMANDRA LONGIFOLIA 'BREEZE'	DWARF MAT RUSH
	SISYRINCHIUM BELLUM 'NORTH COAST'	BLUE-EYED GRASS

WATER EFFICIENT NOTES

1. IRRIGATION SYSTEM TO BE FULLY AUTOMATIC WEATHER-BASED SYSTEM USING LOW-FLOW AND BUBBLER DISTRIBUTION. NEW IRRIGATION IN ACCORDANCE WITH REQUIREMENTS AND GUIDELINES OF THE SONOMA COUNTY WATER AGENCY FOR WATER EFFICIENT LANDSCAPE AND SANTA ROSA'S WATER EFFICIENT LANDSCAPE POLICY.
2. IRRIGATION AT ALL LOW & MIXED WATER USE HYDROZONES TO USE WATER CONSERVING LOW-FLOW IRRIGATION HEADS OR DRIP TUBING.
3. TREES SHALL BE ON A VALVE CIRCUIT INDEPENDENT OF ALL OTHER PLANTING.
4. IRRIGATION CONTROLLER MODEL SHALL UTILIZE EVAPOTRANSPIRATION DATA AND RAIN SENSOR DATA TO AUTOMATICALLY ADJUST WATERING SCHEDULES.
5. IRRIGATION EQUIPMENT SHALL INCLUDE A MANUAL SHUT-OFF VALVE AND BACKFLOW PREVENTION DEVICE.
6. IRRIGATION SCHEDULE TO BE DEVELOPED AND MANAGED TO UTILIZE THE MINIMUM AMOUNT OF WATER REQUIRED TO MAINTAIN PLANT HEALTH.

LANDSCAPE PLAN

DATED: 12/17/18
M:\PROJECTS\FULCRUM\PINER ROAD\AUTOCAD\LANDSCAPE\12-17-2018 3:38 PM BY DAVID FLORES

LEGEND



S1 SITE LIGHT STANDARD:
LITHONIA, D-SERIES LED AREA POLE MOUNT



S2 EXTERIOR WALL LIGHT:
BARRISTER, BRONZE LED
OUTDOOR WALL LIGHT



S3 BICYCLE RACK:
CYCLE-SAFE, CLASSIC BIKE U RACK
2-BIKE CAPACITY



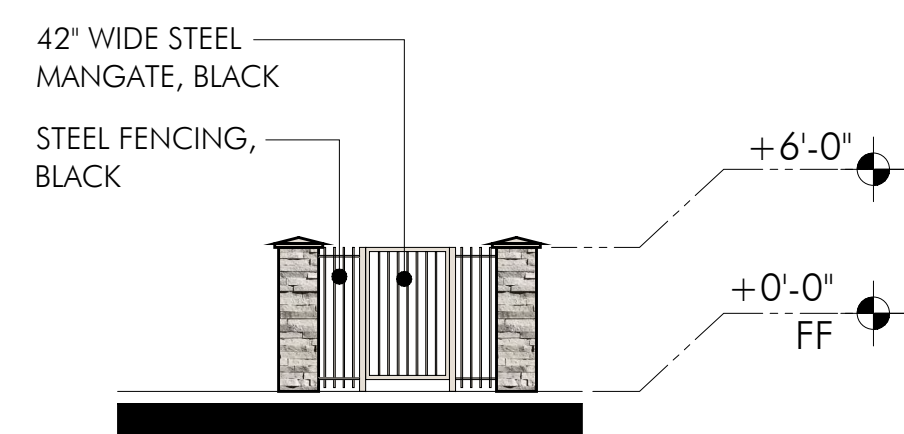
S4 TYPE A - PROPERTY LINE WALL @ WEST SIDE



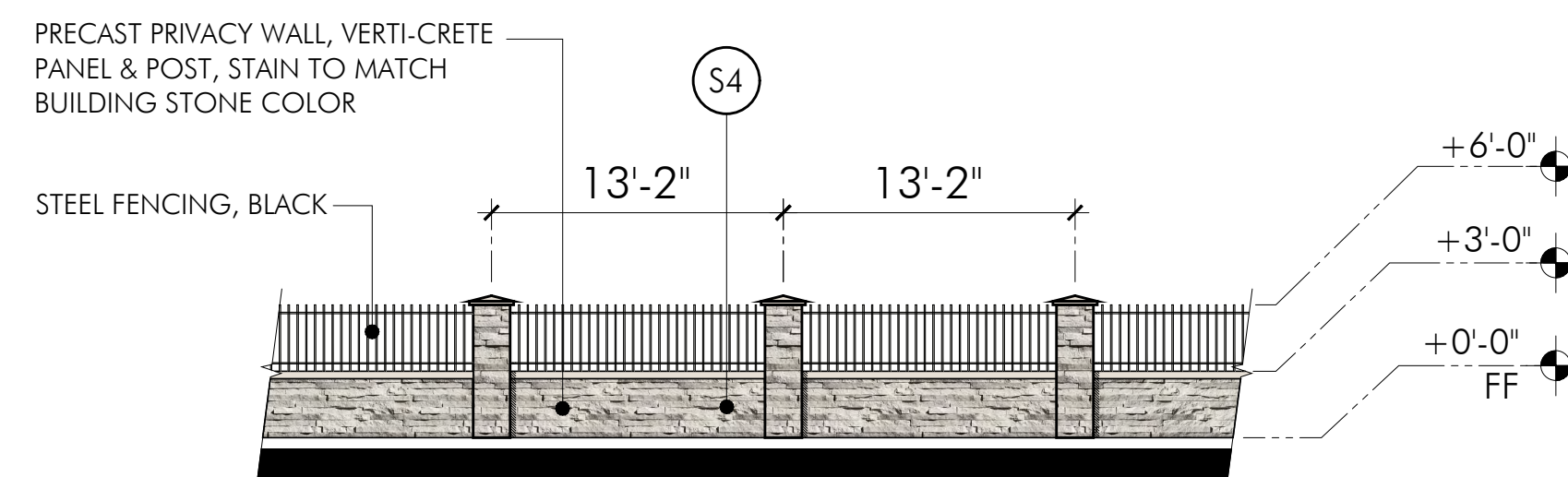
S5 TYPE B - SPLIT RAIL CEDAR FENCE



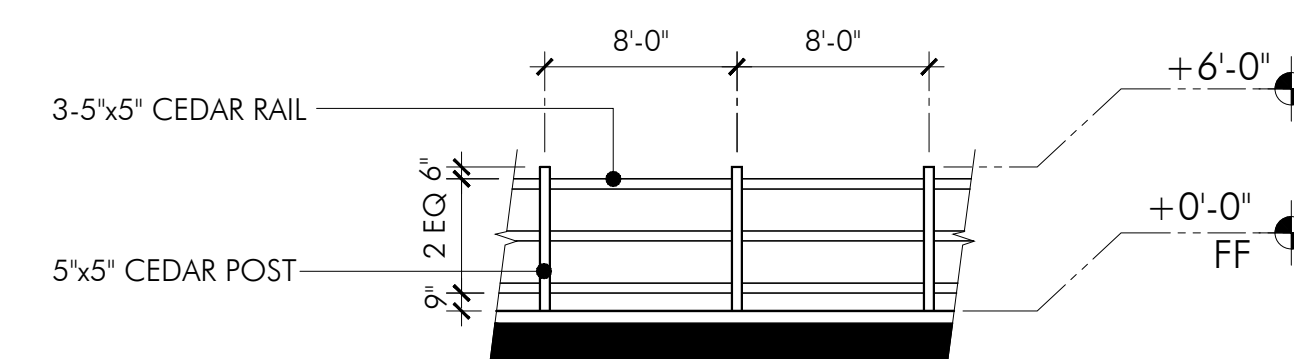
S6 TRELLIS



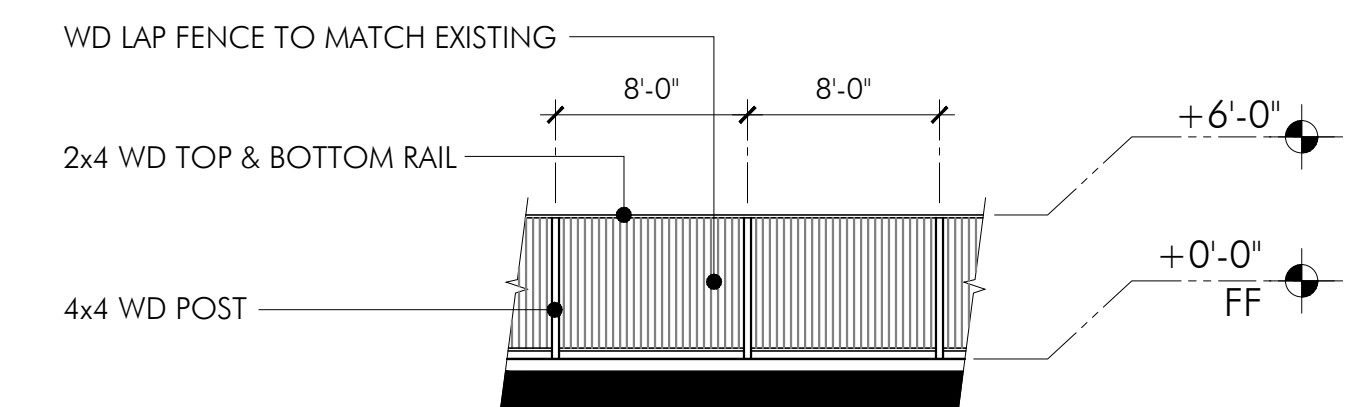
TYPE A - MANGATE & FENCE



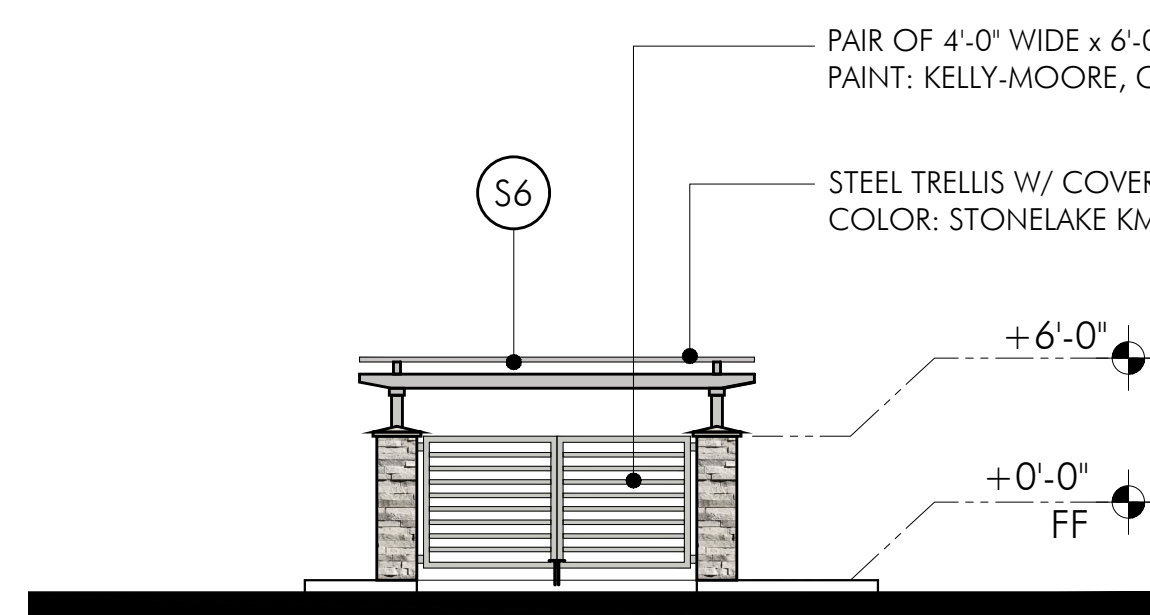
TYPE A - PROPERTY LINE WALL @ WEST SIDE



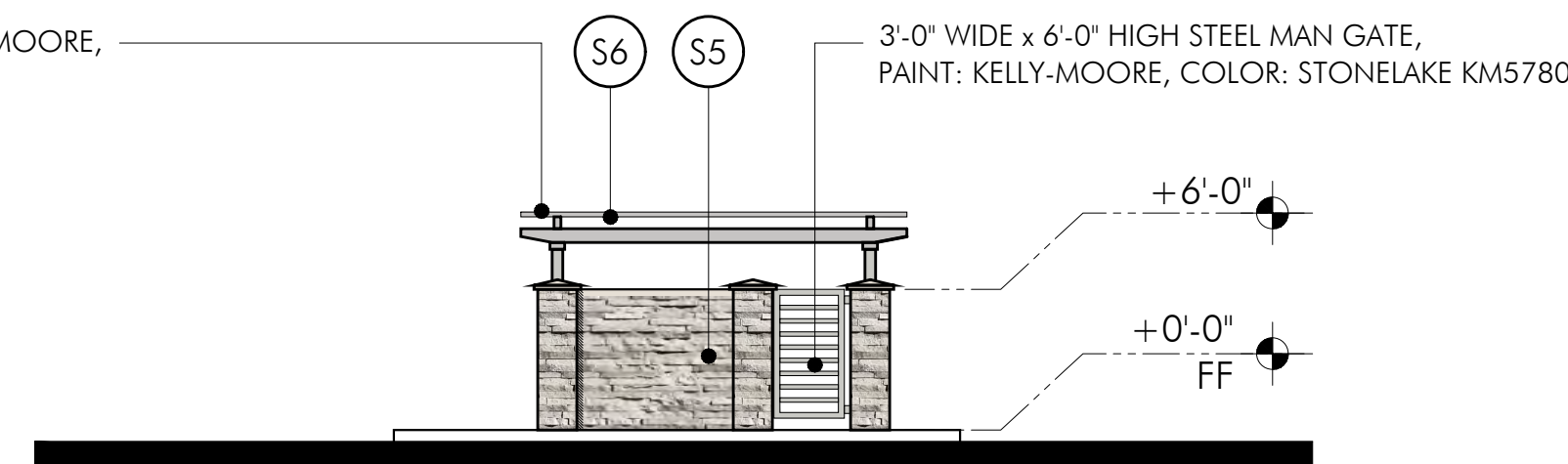
TYPE B - SPLIT RAIL CEDAR FENCE



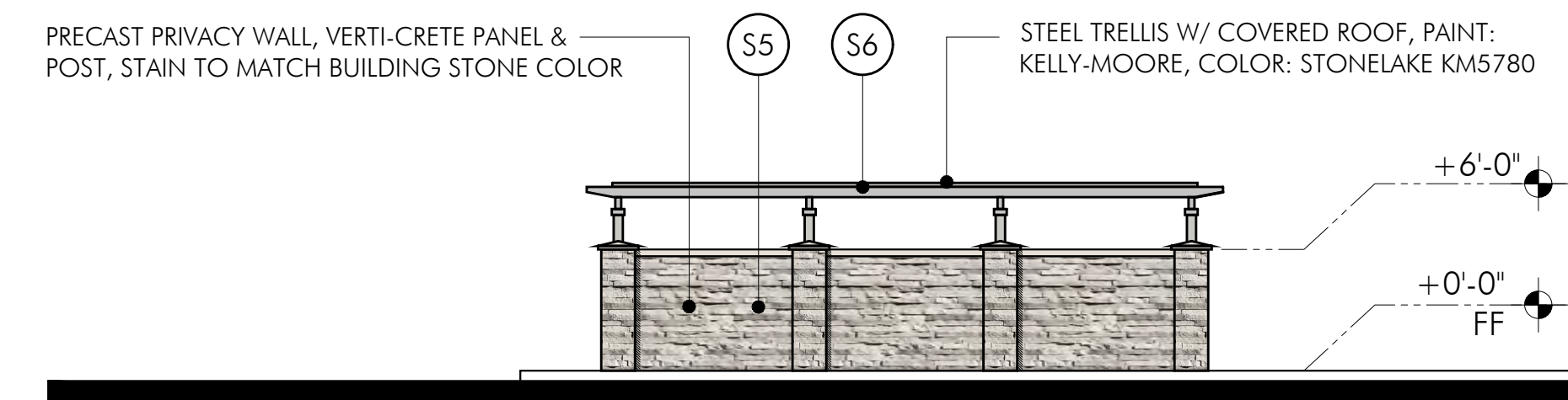
TYPE C - FENCE TO MATCH EXISTING



REFUSE ENCLOSURE @ SOUTH



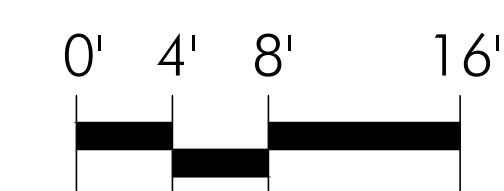
REFUSE ENCLOSURE @ NORTH



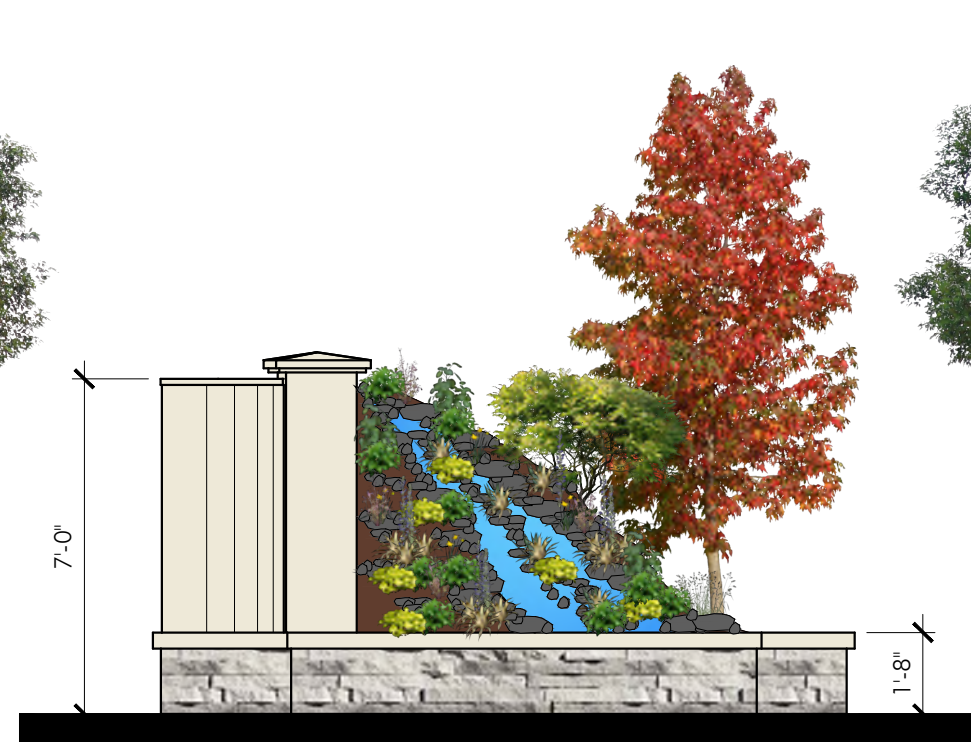
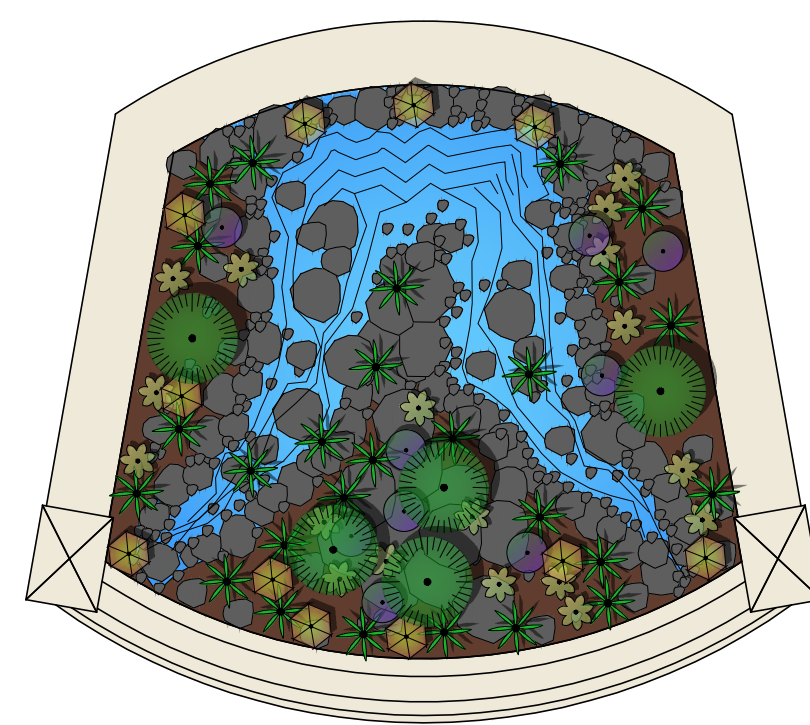
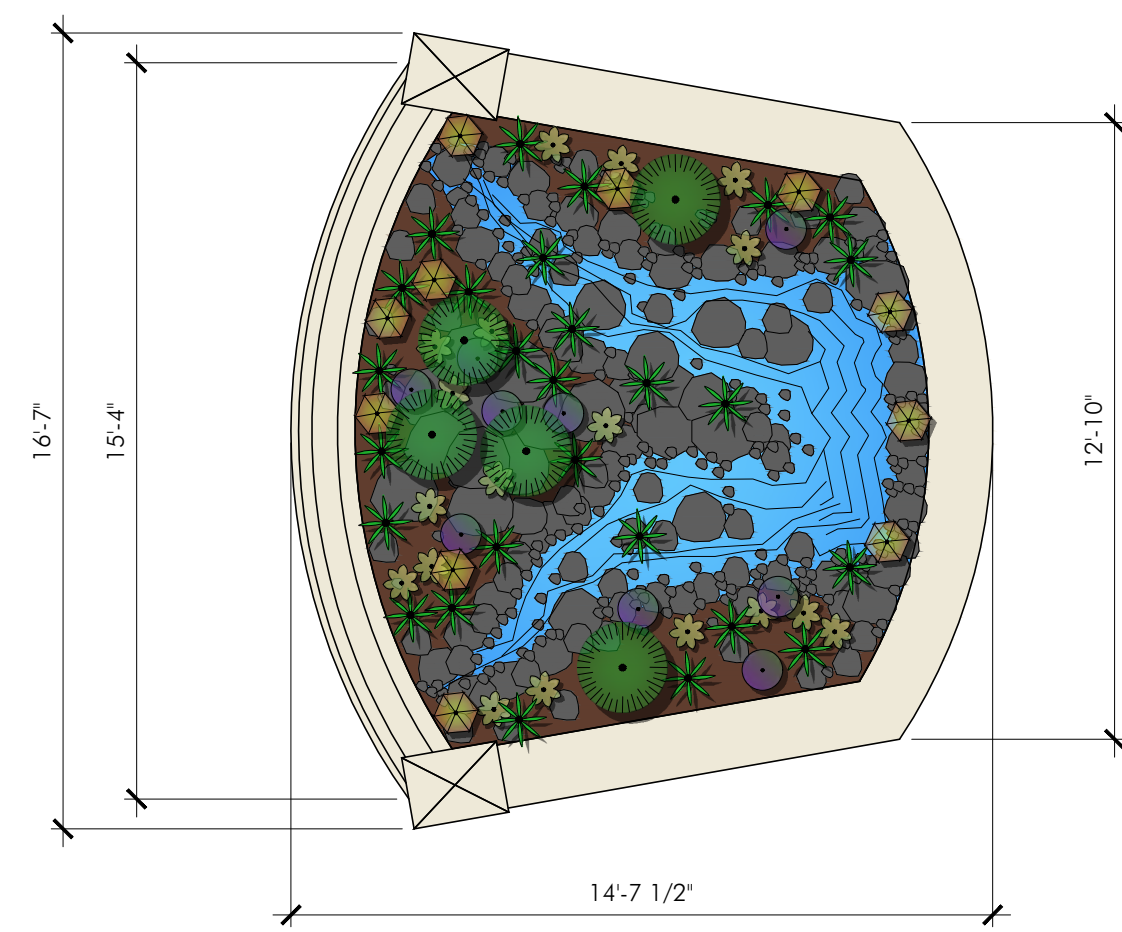
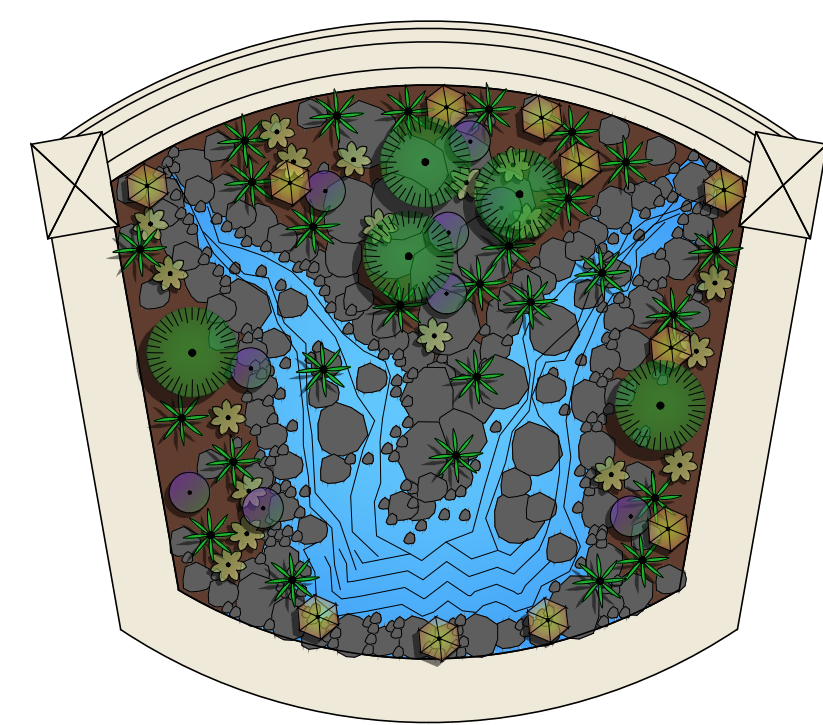
REFUSE ENCLOSURE @ EAST & WEST

SITE DETAILS

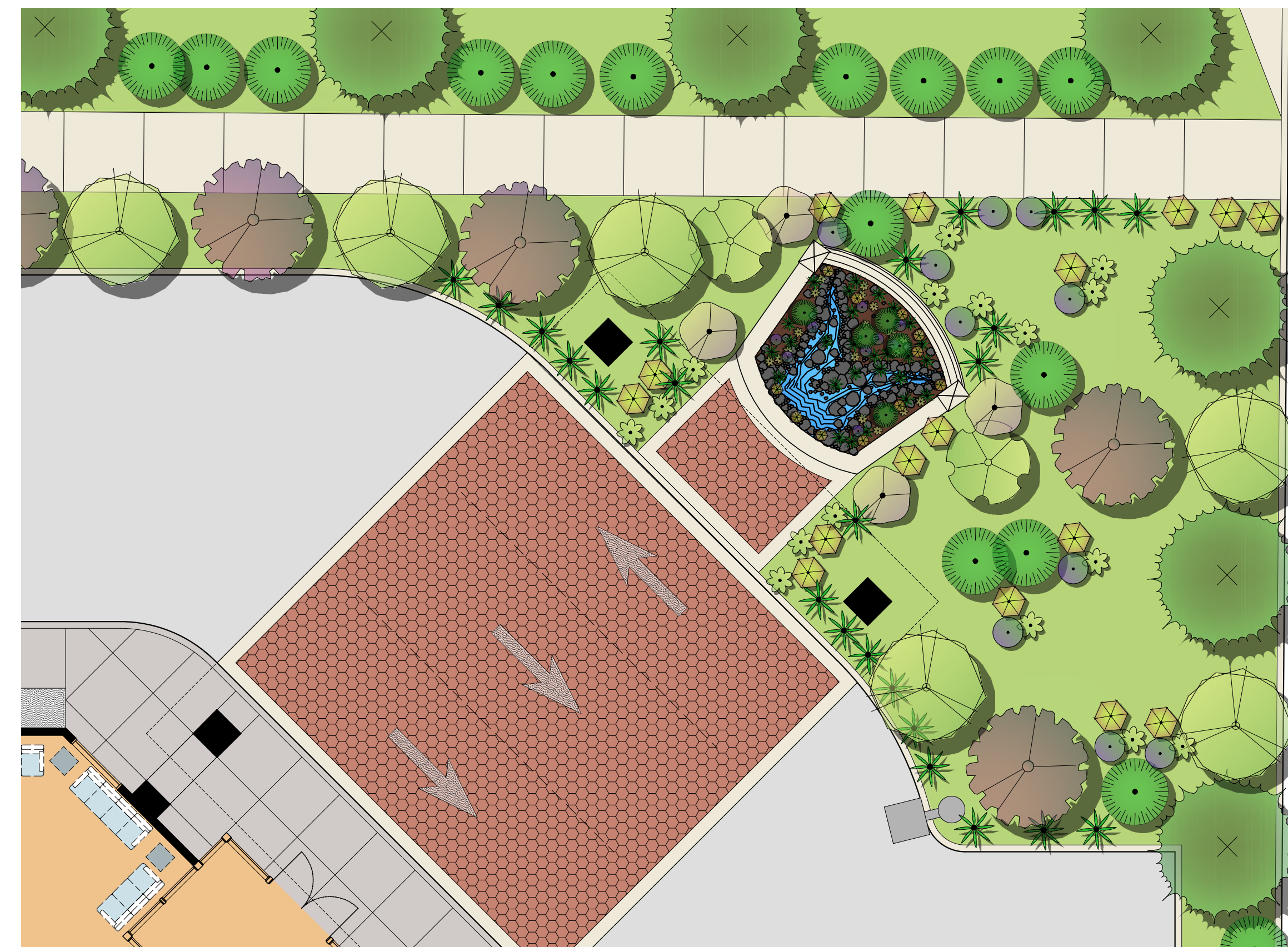
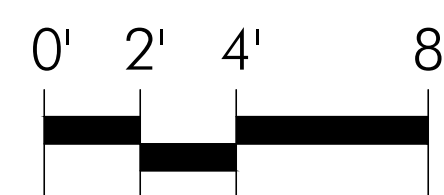
PINER ROAD ASSISTED LIVING RESIDENCE
1980 PINER ROAD
SANTA ROSA, CALIFORNIA



DATED: 12/17/18
P:\SRA - SANTA ROSA ASSISTED LIVING\PRESENTATION\DRAWINGS\SRA-A303-SITE DETAILS.DWG - 12/17/2018 1:12 PM BY LEANNE HIRSH



MONUMENT SIGN



SITE PLAN



MONUMENT SIGN

PINER ROAD ASSISTED LIVING RESIDENCE
1980 PINER ROAD
SANTA ROSA, CALIFORNIA

DATED: 12/17/18
F:\SRA - SANTA ROSA ASSISTED LIVING\PRESENTATION\DRAWINGS\SRA-A304-MONUMENT SIGN.DWG - 12/17/2018 1:11 PM BY LEANNE HNH