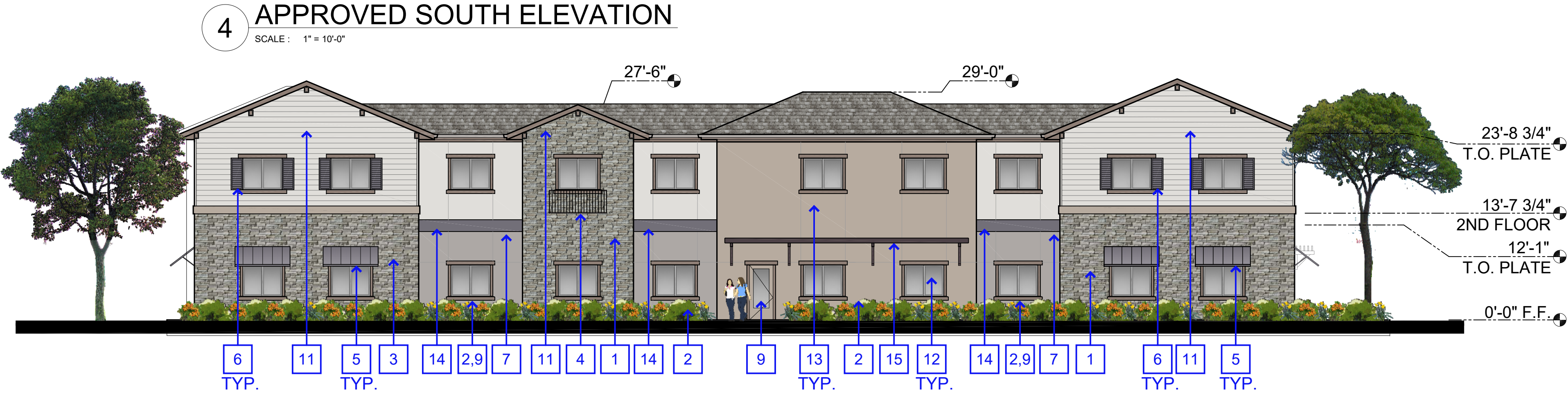


PROPOSED CHANGES

- 1 RAISED STONE WAINSCOT
- 2 REMOVED STONE WAINSCOT
- 3 LOWERED STONE WAINSCOT
- 4 ADDED JULIETTE BALCONY
- 5 ADDED WINDOW AWNING
- 6 ADDED WINDOW SHUTTERS
- 7 REMOVED SHED ROOF
- 8 CHANGED TRELLIS TO WALL MOUNTED AND ADJUSTED SIZE
- 9 RELOCATED EXIT DOOR
- 10 RELOCATED CHIMNEY
- 11 CHANGED FROM HIPPED ROOF TO GABLE ROOF
- 12 CHANGED WINDOW STYLE
- 13 REMOVED THROUGH WALL AIR CONDITIONING UNIT
- 14 ADDED BELLY BAND TRIM
- 15 ADDED WALL MOUNTED TRELLIS
- 16 CHANGED GARAGE DOOR TO MAN DOOR



3 PROPOSED SOUTH ELEVATION  
SCALE: 1" = 10'-0"



2 APPROVED WEST ELEVATION  
SCALE: 1" = 10'-0"



1 PROPOSED WEST ELEVATION  
SCALE: 1" = 10'-0"

EXTERIOR ELEVATIONS

THE LODGE AT PINER ROAD

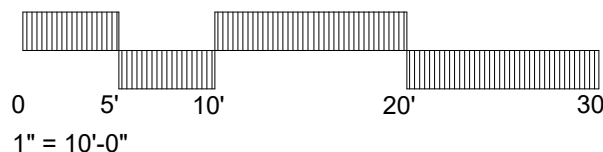
1980 PINER ROAD  
SANTA ROSA, CALIFORNIA

A3.1b

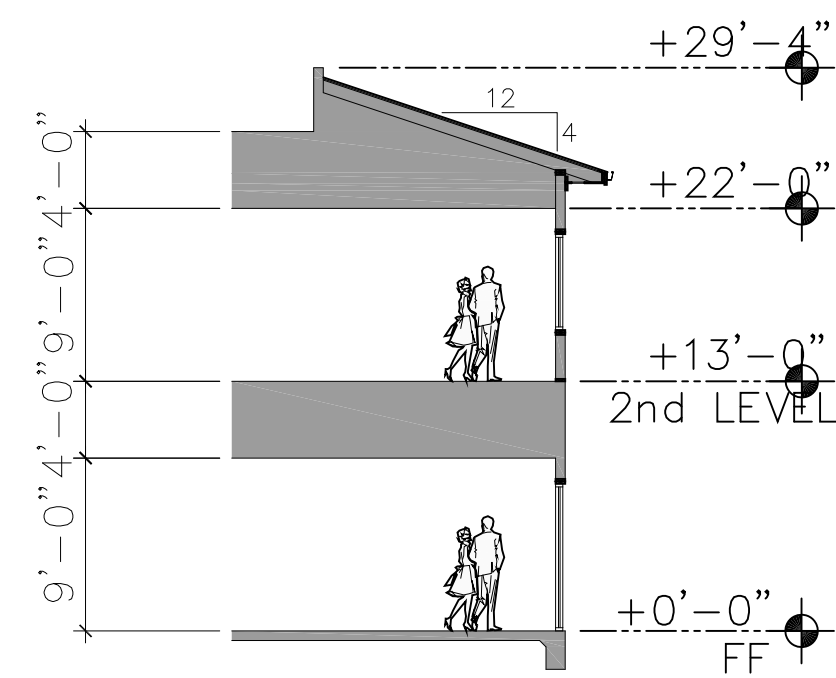
DATE: 07.16.2019

lenity  
architecture, inc.

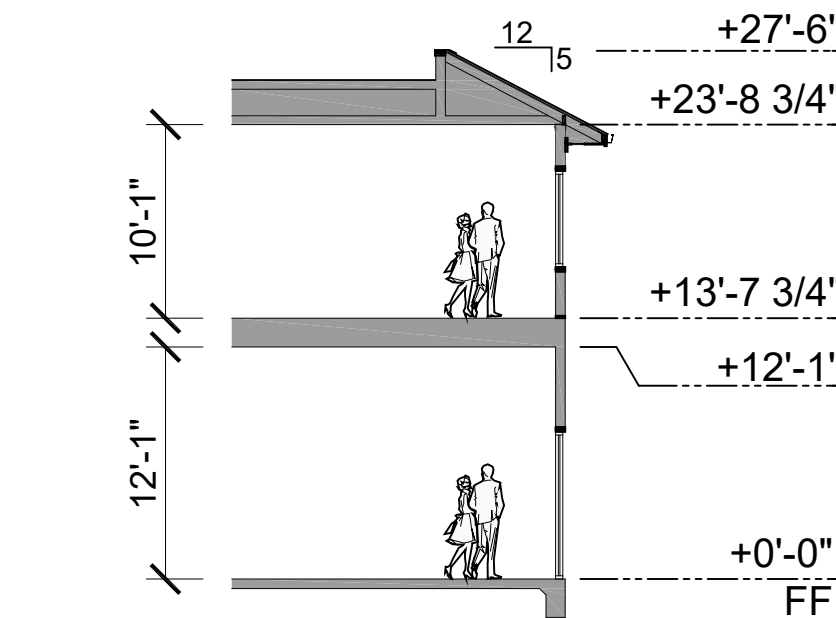
3150 Kettle Court SE, Salem, Oregon 97301  
P 503 399 1090 F 503 399 0565 W lenityarchitecture.com



Blue Mountain  
Construction Services



6 APPROVED BLDG SECTION A  
SCALE: 1" = 10'-0"



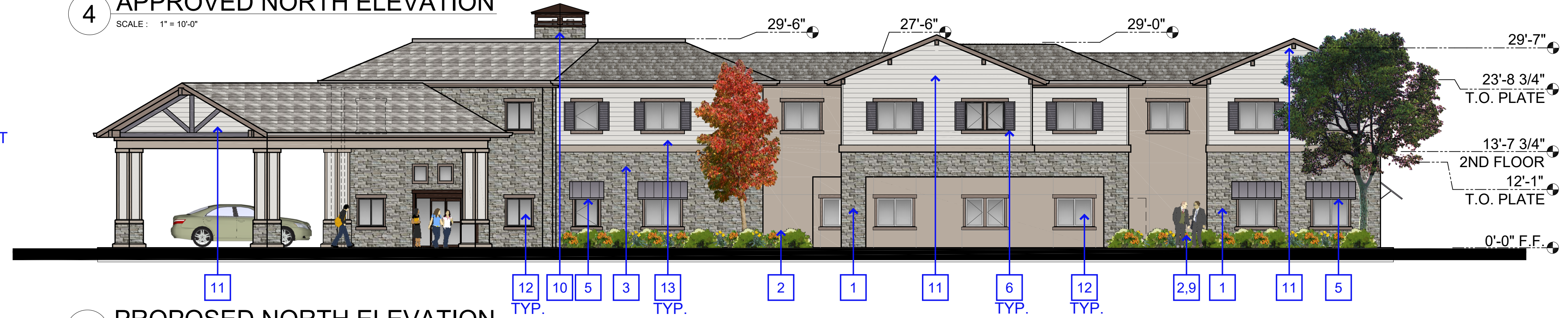
5 PROPOSED BLDG SECTION A  
SCALE: 1" = 10'-0"

## PROPOSED CHANGES

- 1 RAISED STONE WAINSCOT
- 2 REMOVED STONE WAINSCOT
- 3 LOWERED STONE WAINSCOT
- 4 ADDED JULIETTE BALCONY
- 5 ADDED WINDOW AWNING
- 6 ADDED WINDOW SHUTTERS
- 7 REMOVED SHED ROOF
- 8 CHANGED TRELLIS TO WALL MOUNTED AND ADJUSTED SIZE
- 9 RELOCATED EXIT DOOR
- 10 RELOCATED CHIMNEY
- 11 CHANGED FROM HIPPED ROOF TO GABLE ROOF
- 12 CHANGED WINDOW STYLE
- 13 REMOVED THROUGH WALL AIR CONDITIONING UNIT
- 14 ADDED BELLY BAND TRIM
- 15 ADDED WALL MOUNTED TRELLIS
- 16 CHANGED GARAGE DOOR TO MAN DOOR



4 APPROVED NORTH ELEVATION  
SCALE: 1" = 10'-0"



3 PROPOSED NORTH ELEVATION  
SCALE: 1" = 10'-0"



2 APPROVED EAST ELEVATION  
SCALE: 1" = 10'-0"



1 PROPOSED EAST ELEVATION  
SCALE: 1" = 10'-0"

# EXTERIOR ELEVATIONS

## THE LODGE AT PINER ROAD

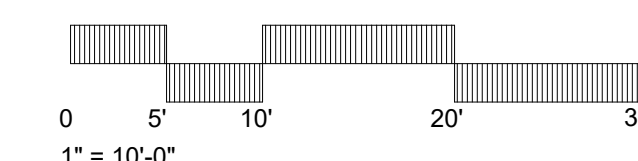
1980 PINER ROAD  
SANTA ROSA, CALIFORNIA

A3.1a

DATE: 07.16.2019

**lenity**  
architecture, inc.

3150 Kettle Court SE, Salem, Oregon 97301  
P 503 399 1090 F 503 399 0565 W lenityarchitecture.com



**Blue Mountain**  
Construction Services

LEGEND



1 COMPOSITION ROOFING, SEE LEGEND



2 STONE VENEER, SEE LEGEND



3 LAP SIDING, SEE LEGEND



4 5 6 STUCCO, SEE LEGEND FOR COLORS



10 DARK BRONZE ANODIZED ALUMINUM STOREFRONT WINDOW W/ CLEAR VISION GLASS



11 VINYL WINDOWS W/ CLEAR VISION GLASS, TRIM COLOR P6



12 SHUTTERS, COLOR P4



13 BALCONETTE, COLOR P5



14 ALUMINA WOOD TRELLIS, COLOR P5



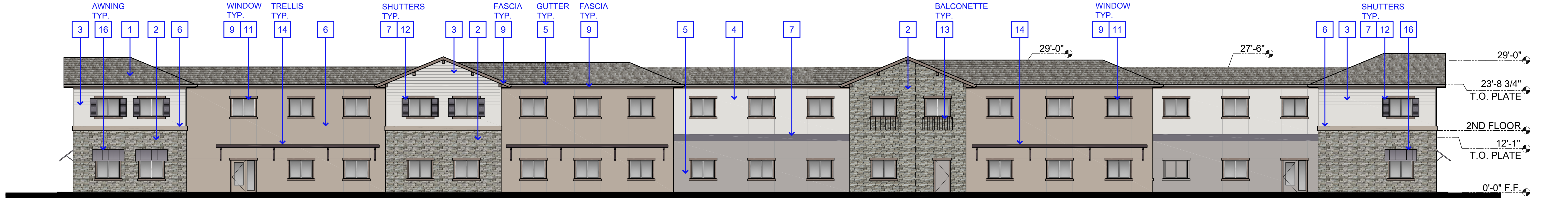
15 PORTE COCHERE



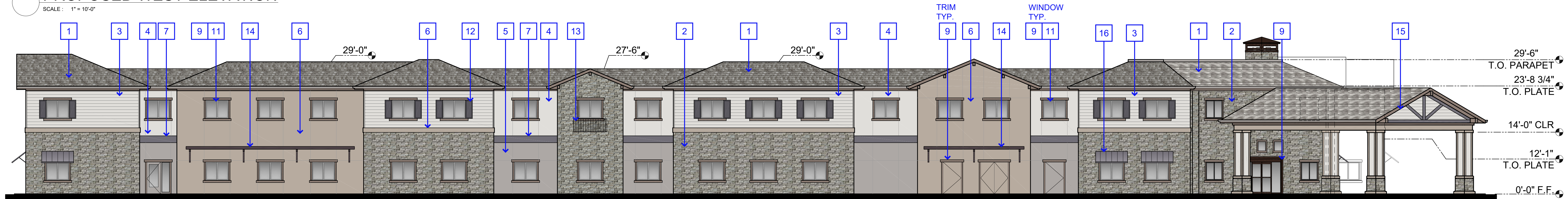
16 METAL AWNING, COLOR P4

COLOR & MATERIAL LEGEND

- 1 COMPOSITION ROOFING: OWENS CORNING, DURATION PREMIUM COOL SHINGLES, COLOR: HARBOR FOG
- 2 STONE VENEER (BASE & BODY): ELDORADO STONE, CLIFFSTONE, COLOR: BOARDWALK
- 3 LAP SIDING: HARDIEPLANK LAP SIDING 8" EXPOSURE OR EQUAL, COLOR: SHERWIN WILLIAMS, SW6000 SNOWFALL
- 4 PAINT #1: LIGHT FIELD COLOR (STUCCO) COLOR: SHERWIN WILLIAMS, SW6000 SNOWFALL
- 5 PAINT #2: MEDIUM FIELD COLOR (STUCCO, GUTTERS) COLOR: SHERWIN WILLIAMS, SW6003 PROPER GRAY
- 6 PAINT #3: DARK FIELD COLOR (STUCCO, TRIM) COLOR: SHERWIN WILLIAMS, SW6073 PERFECT GREIGE
- 7 PAINT #4: ACCENT COLOR (SHUTTERS, AWNINGS, TRIM) COLOR: SHERWIN WILLIAMS, SW6263 EXCLUSIVE PLUM
- 8 PAINT #5: ACCENT COLOR (TRELLIS, JULIETTE BALCONY) COLOR: SHERWIN WILLIAMS, SW6272 PLUM BROWN
- 9 PAINT #6: ACCENT COLOR (FASCIA TRIM, WINDOW TRIM) COLOR: SHERWIN WILLIAMS, SW6074 SPALDING GRAY
- 10 ANODIZED ALUMINUM STOREFRONT WINDOW / DOOR FRAME, COLOR: DARK BRONZE
- 11 VISION GLASS: VITRO ARCHITECTURAL GLASS, SOLARBAN 60 LOW-E, CLEAR



PROPOSED WEST ELEVATION  
SCALE: 1" = 10'-0"



PROPOSED EAST ELEVATION  
SCALE: 1" = 10'-0"

PROPOSED MATERIALS & FINISHES

A3.2  
DATE: 07.16.2019

LEGEND



S1 SITE LIGHT STANDARD:  
LITHONIA, D-SERIES LED AREA POLE MOUNT



S2 EXTERIOR WALL LIGHT:  
BARRISTER, BRONZE LED  
OUTDOOR WALL LIGHT



S3 BICYCLE RACK:  
CYCLE-SAFE, CLASSIC BIKE U RACK  
2-BIKE CAPACITY



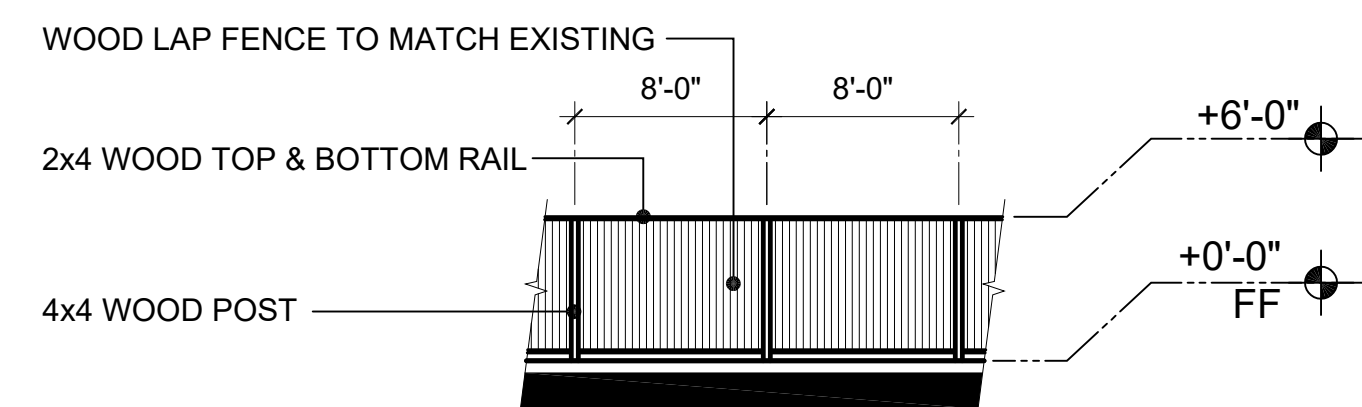
S4 TRELLIS



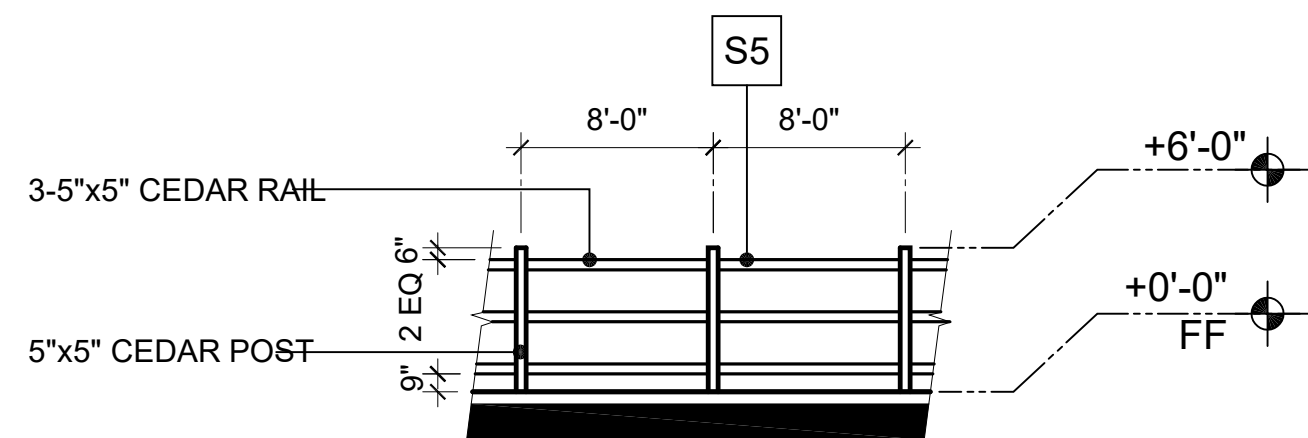
S5 TYPE B - SPLIT RAIL CEDAR FENCE



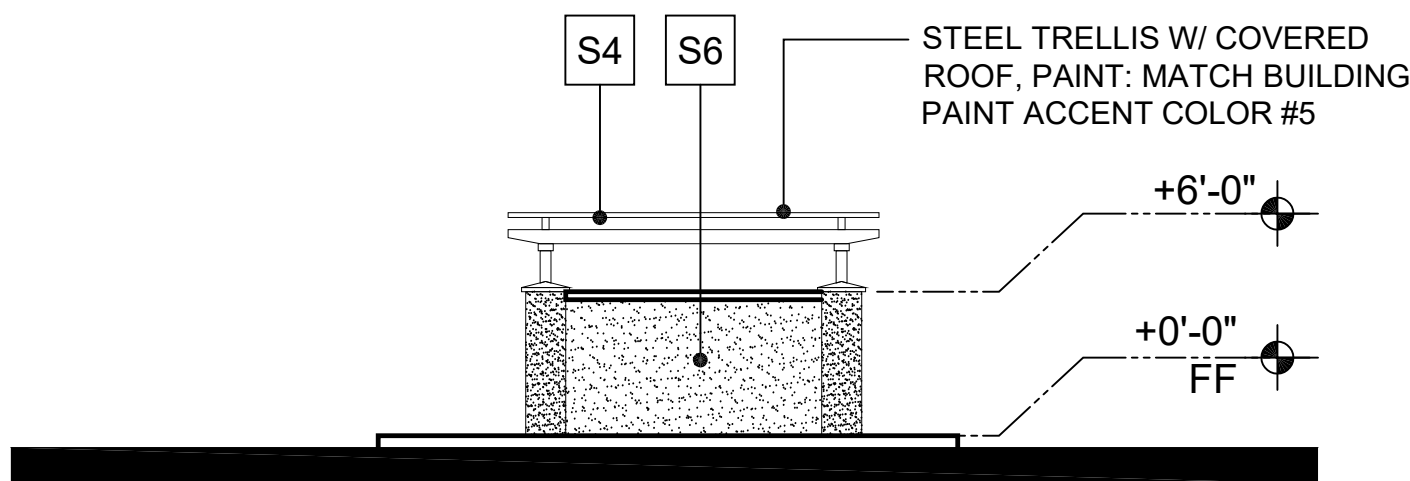
S6 REFUSE ENCLOSURE



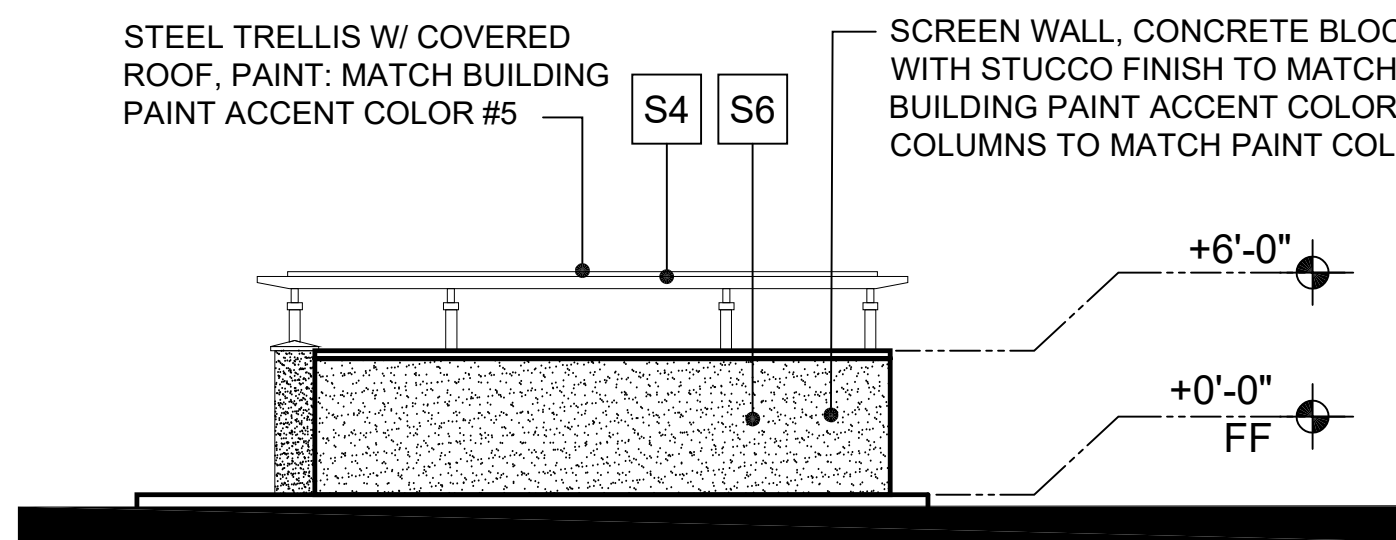
TYPE A - FENCE TO MATCH EXISTING



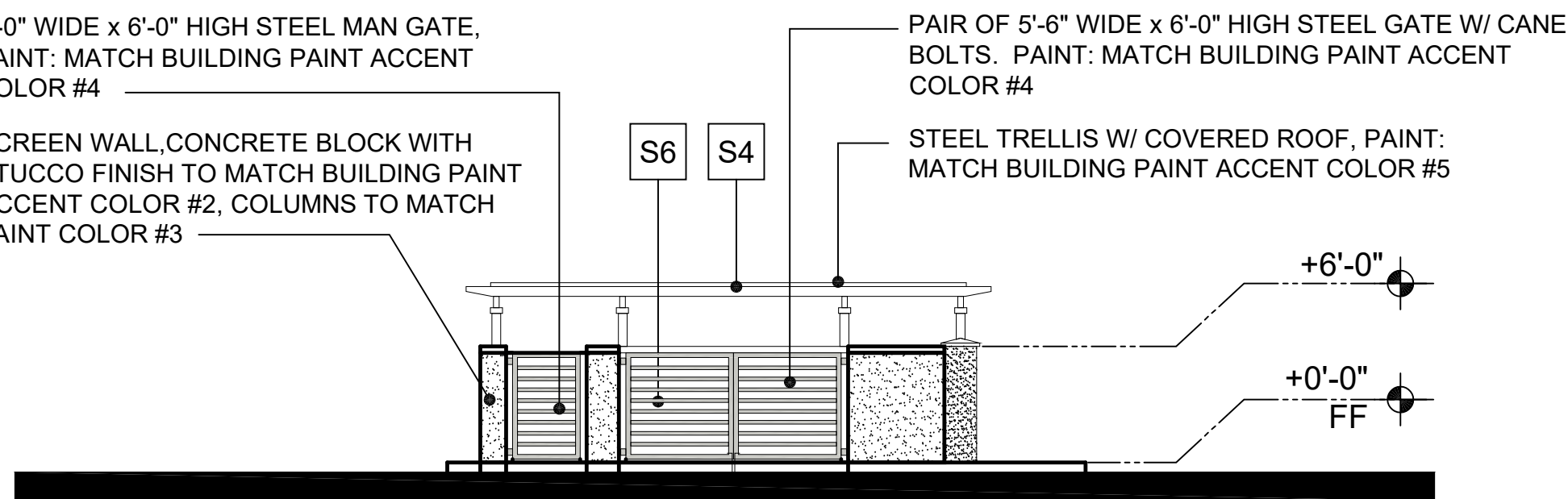
TYPE B - SPLIT RAIL CEDAR FENCE



COVERED REFUSE @ SOUTH & NORTH



COVERED REFUSE @ WEST



COVERED REFUSE @ EAST

SITE DETAILS

THE LODGE AT PINER ROAD

1980 PINER ROAD  
SANTA ROSA, CALIFORNIA