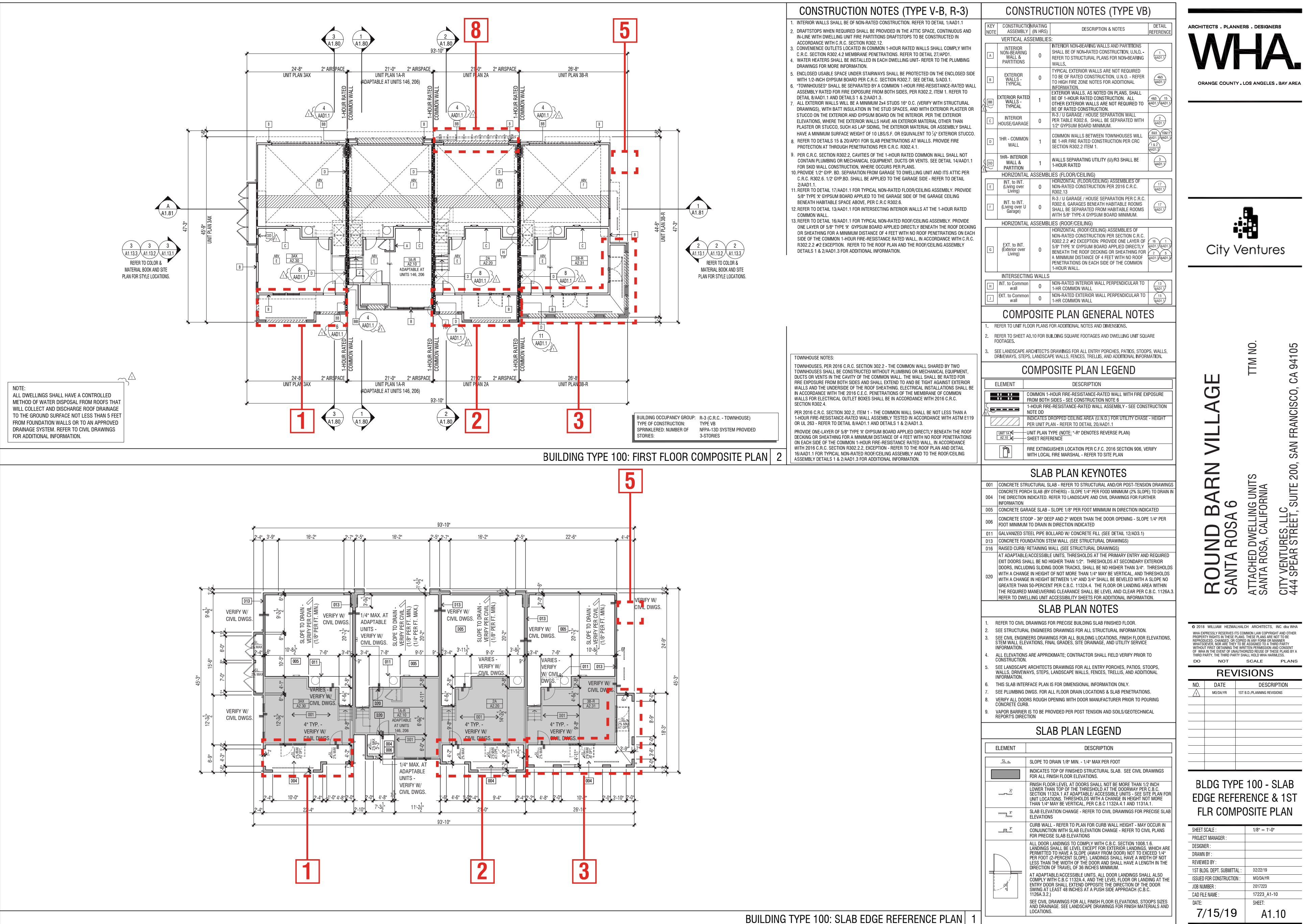
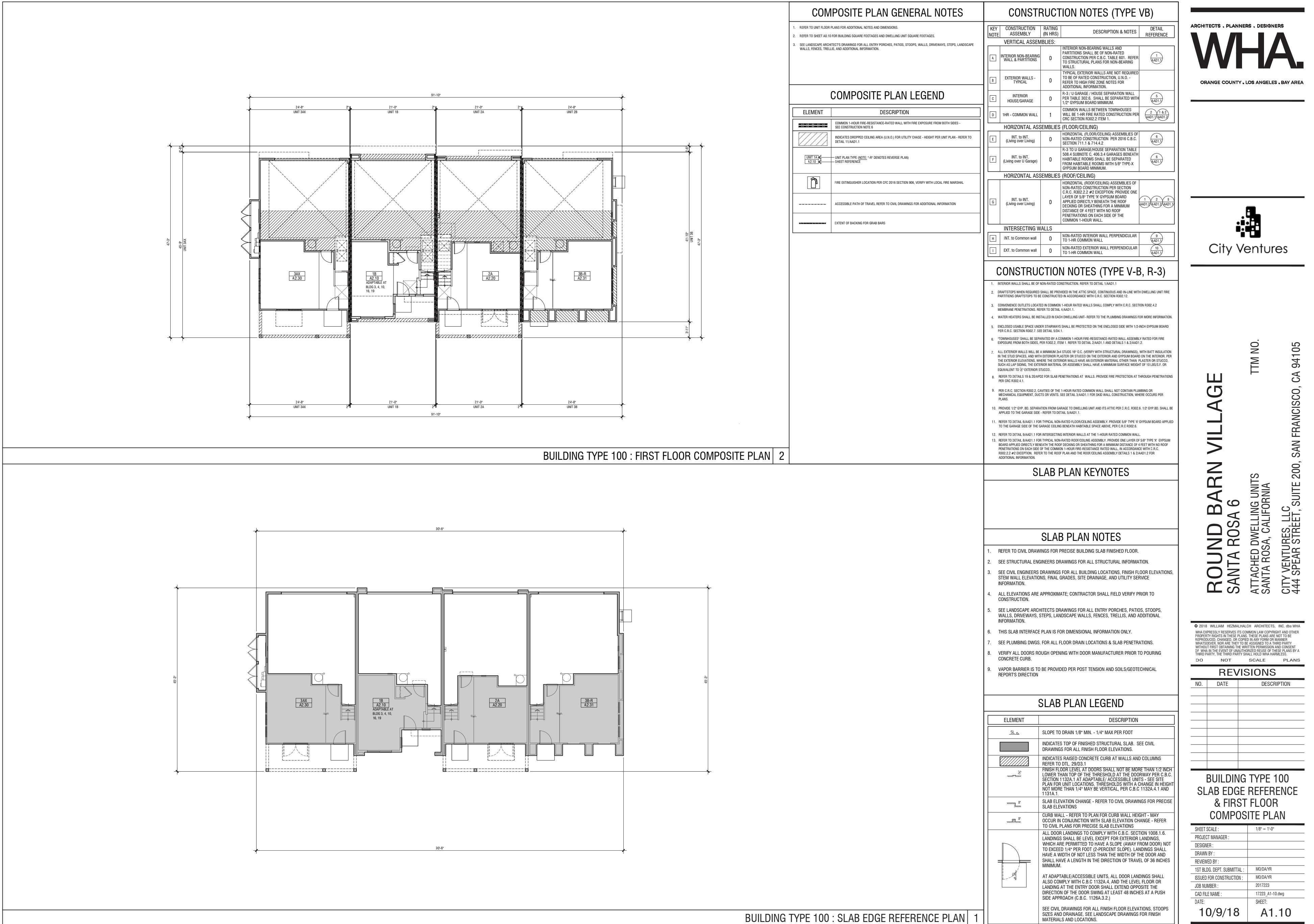


**CURRENT EXISTING 2ND BUILDING DEPARTMENT  
SUBMITTAL SET**



## REVISIONS:

- 1 Unit 3A Added Covered Deck | Created Double Gable | Reconfigured Windows | Removed Awnings Above Windows | Removed / Replaced Horizontal Siding with Boards & Batts.
  - 2 Unit 2A Added Covered Deck | Created Double Gable | Reconfigured Windows | Removed Awnings Above Windows | Removed / Replaced Horizontal Siding with Boards & Batts.
  - 3 Unit 3B Added Wrap Around Deck / Reconfigured Porch | Added 3050 Window | Added Awning Above Deck Door and Windows at second level
  - 4 Added Gable/Sloped Roof
  - 5 Removed Ladder
  - 6 Revised Second Floor Massing at Kitchen
  - 7 Added Awning
  - 8 Added Trellis at Unit 2A, Typ.

## BUILDING TYPE 100 | Slab Edge & 1st Floor Plan Composite

SANTA ROSA, CA

## A1.1

## DESIGN REVIEW APPLICATION

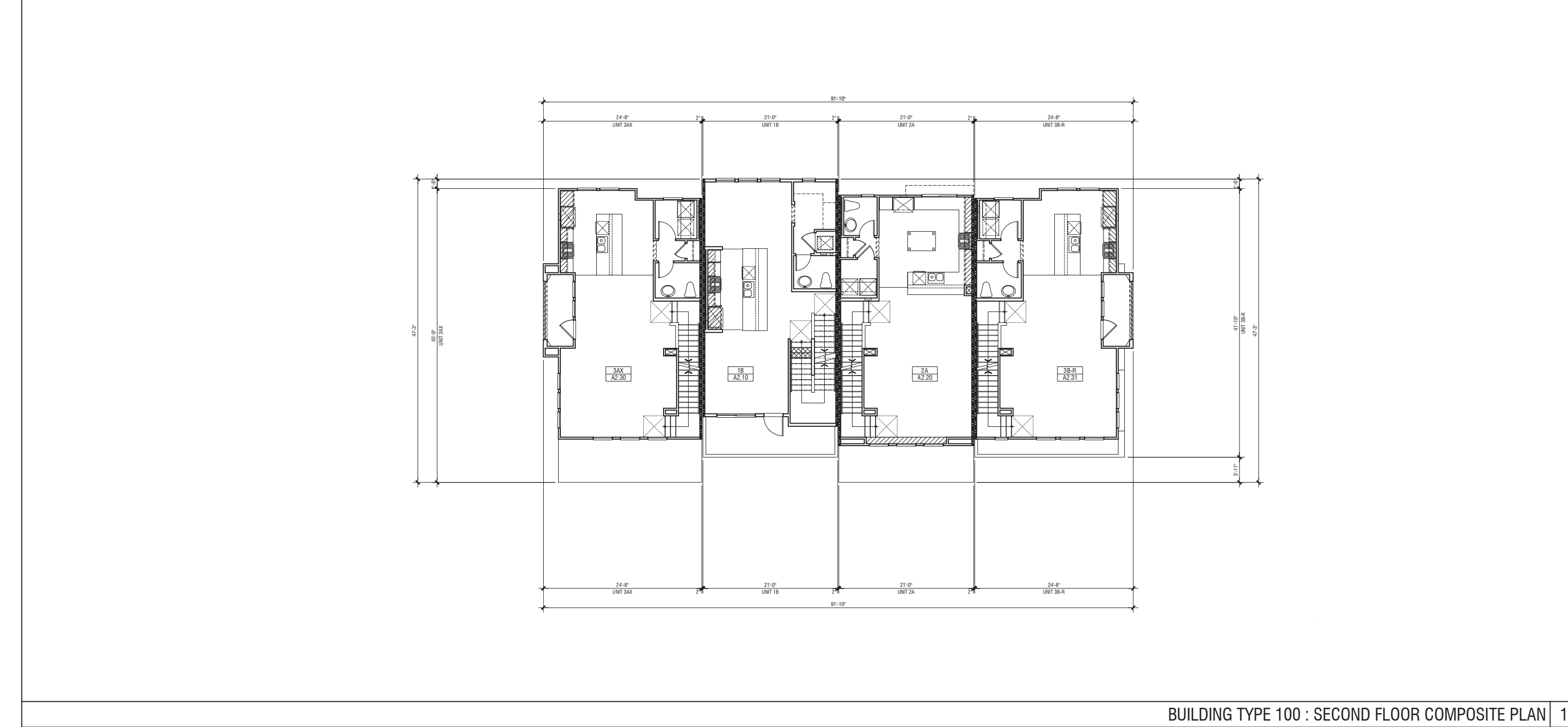
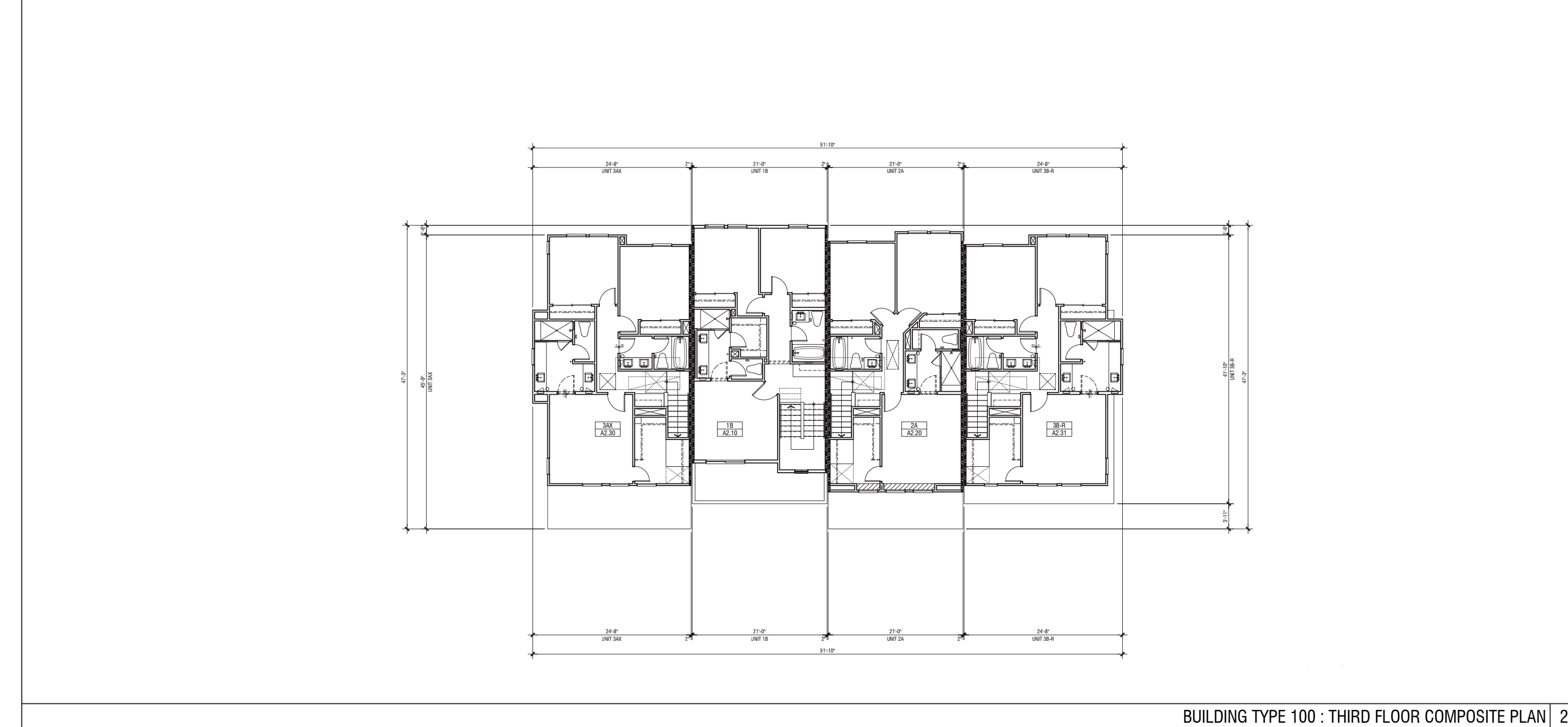
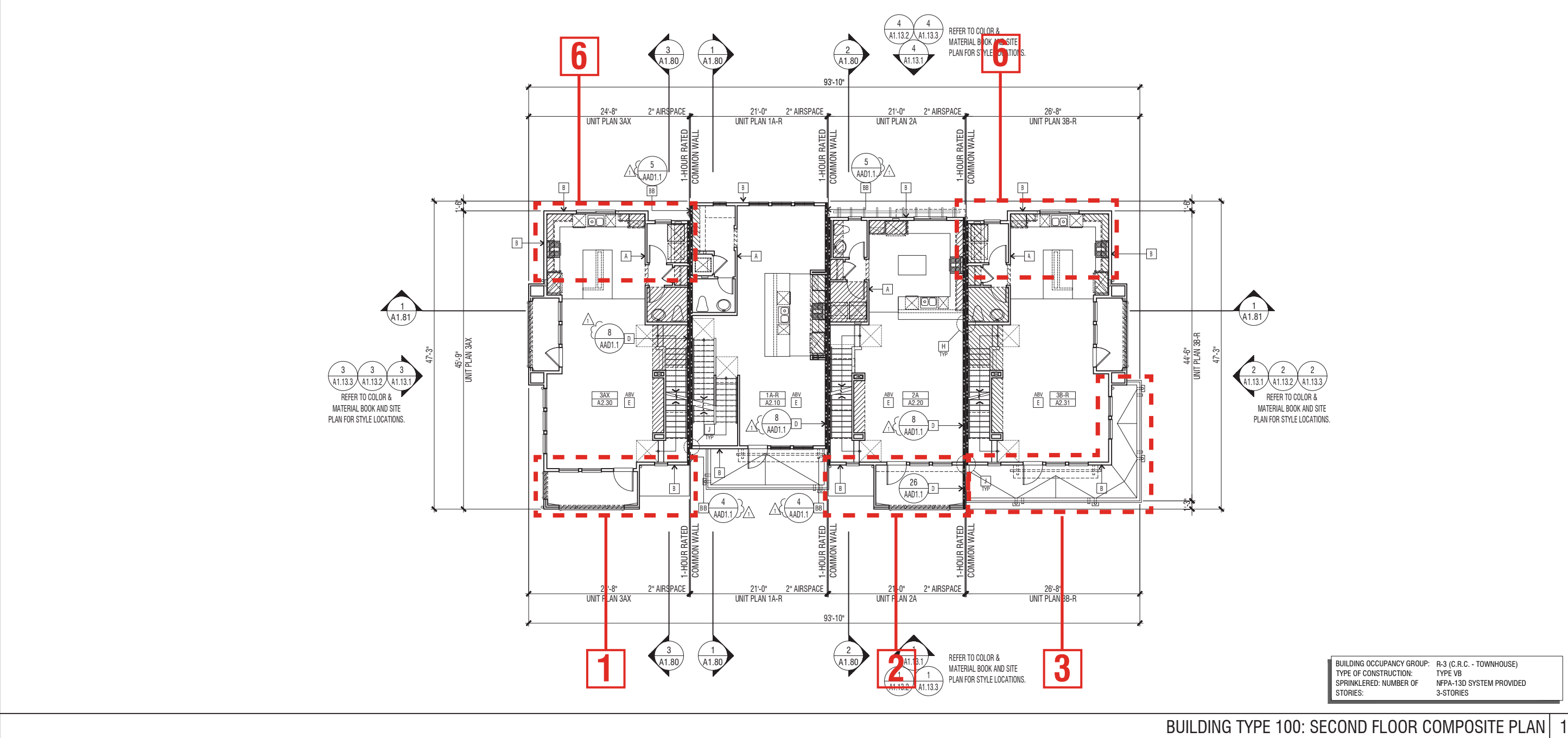
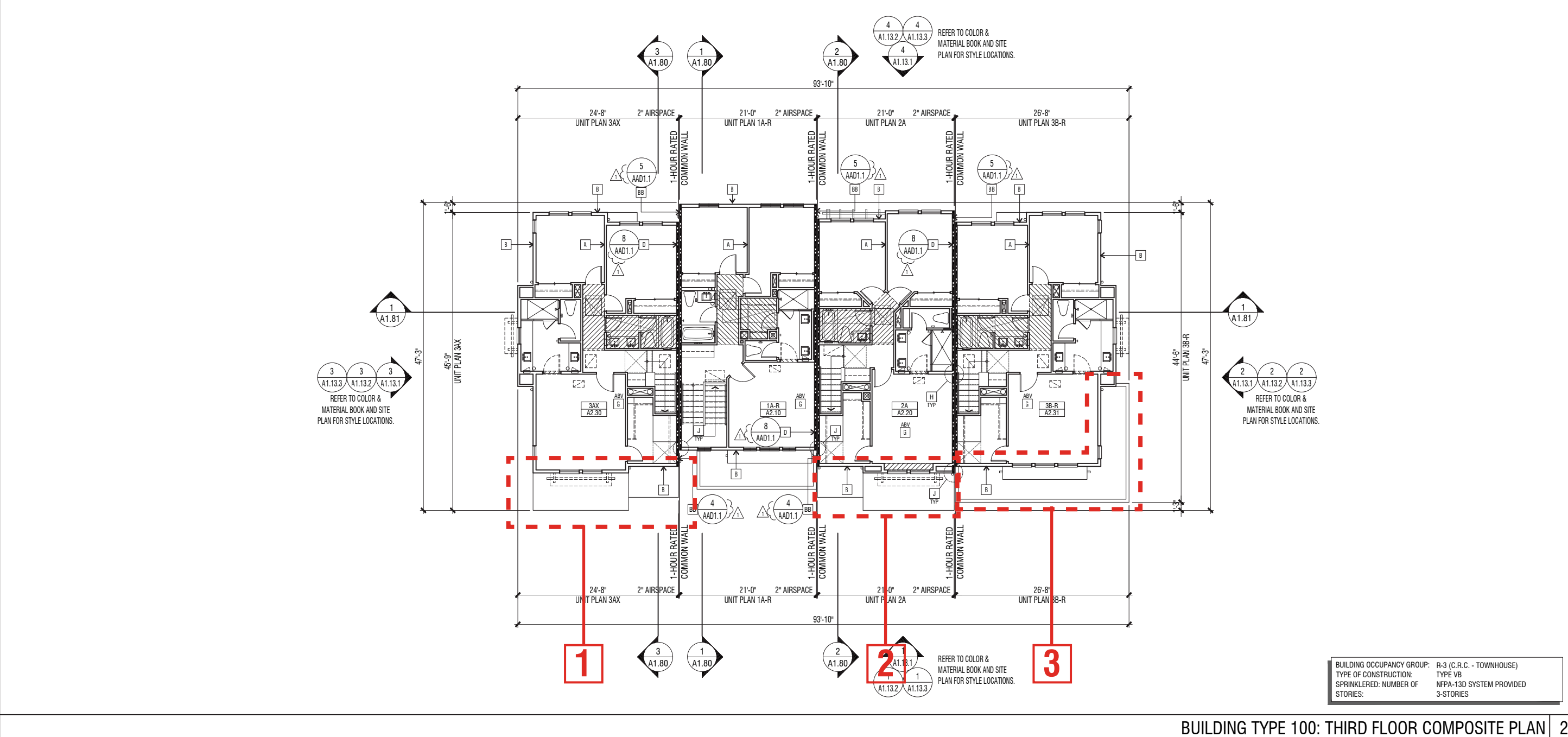
© 2019 WILLIAM HEZMALHALCH ARCHITECTS, INC. DBA WHA. | 2017223 | 09-06-19

CHITECTS . PLANNERS . DESIGNERS

ORANGE COUNTY . LOS ANGELES . BAY AREA



**CURRENT EXISTING 2ND BUILDING DEPARTMENT  
SUBMITTAL SET**

[illegible][illegible]

## REVISIONS:

- 1 Unit 3A Added Covered Deck | Created Double Gable | Reconfigured Windows | Removed Awnings Above Windows | Removed / Replaced Horizontal Siding with Boards & Batts.
  - 2 Unit 2A Added Covered Deck | Created Double Gable | Reconfigured Windows | Removed Awnings Above Windows | Removed / Replaced Horizontal Siding with Boards & Batts.
  - 3 Unit 3B Added Wrap Around Deck / Reconfigured Porch | Added 3050 Window | Added Awning Above Deck Door and Windows at second level
  - 4 Added Gable/Sloped Roof
  - 5 Removed Ladder
  - 6 Revised Second Floor Massing at Kitchen
  - 7 Added Awning
  - 8 Added Trellis at Unit 2A, Typ.

## BUILDING TYPE 100 | 2nd & 3rd Floor Plan Composite

SANTA ROSA, CA

# ROUND BARN VILLAGE

## A1.2

## DESIGN REVIEW APPLICATION

© 2019 WILLIAM HEZMALHALCH ARCHITECTS, INC. DBA WHA. | 2017223 | 09-06-19

ORANGE COUNTY . LOS ANGELES . BAY AREA



City Ventures

ARCHITECTS . PLANNERS . DESIGNERS



ORANGE COUNTY . LOS ANGELES . BAY AREA



**CURRENT EXISTING 2ND BUILDING DEPARTMENT  
SUBMITTAL SET**

[illegible]

## REVISIONS:

- 1 Unit 3A Added Covered Deck | Created Double Gable | Reconfigured Windows | Removed Awnings Above Windows | Removed / Replaced Horizontal Siding with Boards & Batts.
  - 2 Unit 2A Added Covered Deck | Created Double Gable | Reconfigured Windows | Removed Awnings Above Windows | Removed / Replaced Horizontal Siding with Boards & Batts.
  - 3 Unit 3B Added Wrap Around Deck / Reconfigured Porch | Added 3050 Window | Added Awning Above Deck Door and Windows at second level
  - 4 Added Gable/Sloped Roof
  - 5 Removed Ladder
  - 6 Revised Second Floor Massing at Kitchen
  - 7 Added Awning
  - 8 Added Trellis at Unit 2A, Typ.
  - 9 Per City Fire Request The Rear Elevation Roof Design Has Been Modified

## BUILDING TYPE 100 | Roof Plan

# ROUND BARN VILLAGE

SANTA ROSA, CA

[illegible][illegible]





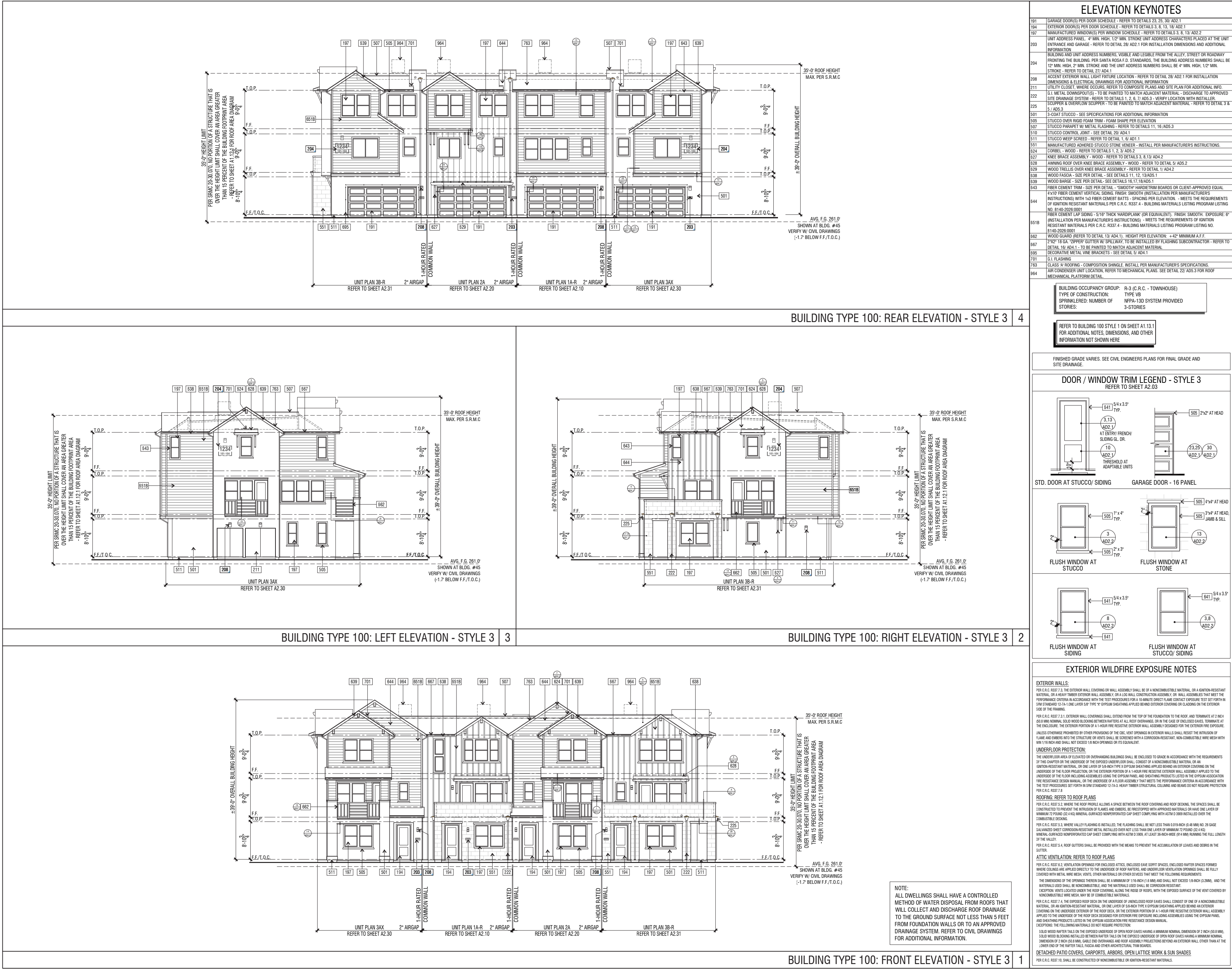






APPROVED DRB SET 11/15/18

CURRENT EXISTING 2ND BUILDING DEPARTMENT SUBMITTAL SET



Not Part of Original Design

BUILDING TYPE 100 | Style 3 Exterior Elevations

ROUND BARN VILLAGE

SANTA ROSA, CA

A1.6

DESIGN REVIEW APPLICATION

© 2019 WILLIAM HEZMALHALCH ARCHITECTS, INC. DBA WHA. | 2017223 | 09-06-19

ARCHITECTS . PLANNERS . DESIGNERS  
**WHA**  
ORANGE COUNTY . LOS ANGELES . BAY AREA

City Ventures

ROUND BARN VILLAGE  
SANTA ROSA 6  
ATTACHED DWELLING UNITS  
SANTA ROSA, CALIFORNIA  
CITY VENTURES, LLC  
444 GERRARD STREET, SUITE 200, SAN FRANCISCO, CA 94105

REVISIONS		
NO.	DATE	DESCRIPTION

BLDG TYPE 100 -  
EXTERIOR ELEVATIONS -  
STYLE 3

SHEET NAME	1/8" = 1'-0"
PROJECT MANAGER	
DESIGNED BY	
CHECKED BY	
REVIEWED BY	
DATE FOR CONSTRUCTION	
DATE FOR CONSTRUCTION	
DATE FOR CONSTRUCTION	
DATE FOR CONSTRUCTION	
DATE FOR CONSTRUCTION	



**CURRENT EXISTING 2ND BUILDING DEPARTMENT  
SUBMITTAL SET**



Not Part of Original Design

## BUILDING TYPE 101A | Alternative Exterior Elevations

## ROUND BARN VILLAGE

SANTA ROSA, CA

## A1.7

DESIGN REVIEW APPLICATION

© 2019 WILLIAM HEZMALHALCH ARCHITECTS, INC. DBA WHA. | 2017223 | 09-06-19

ARCHITECTS . PLANNERS . DESIGNERS

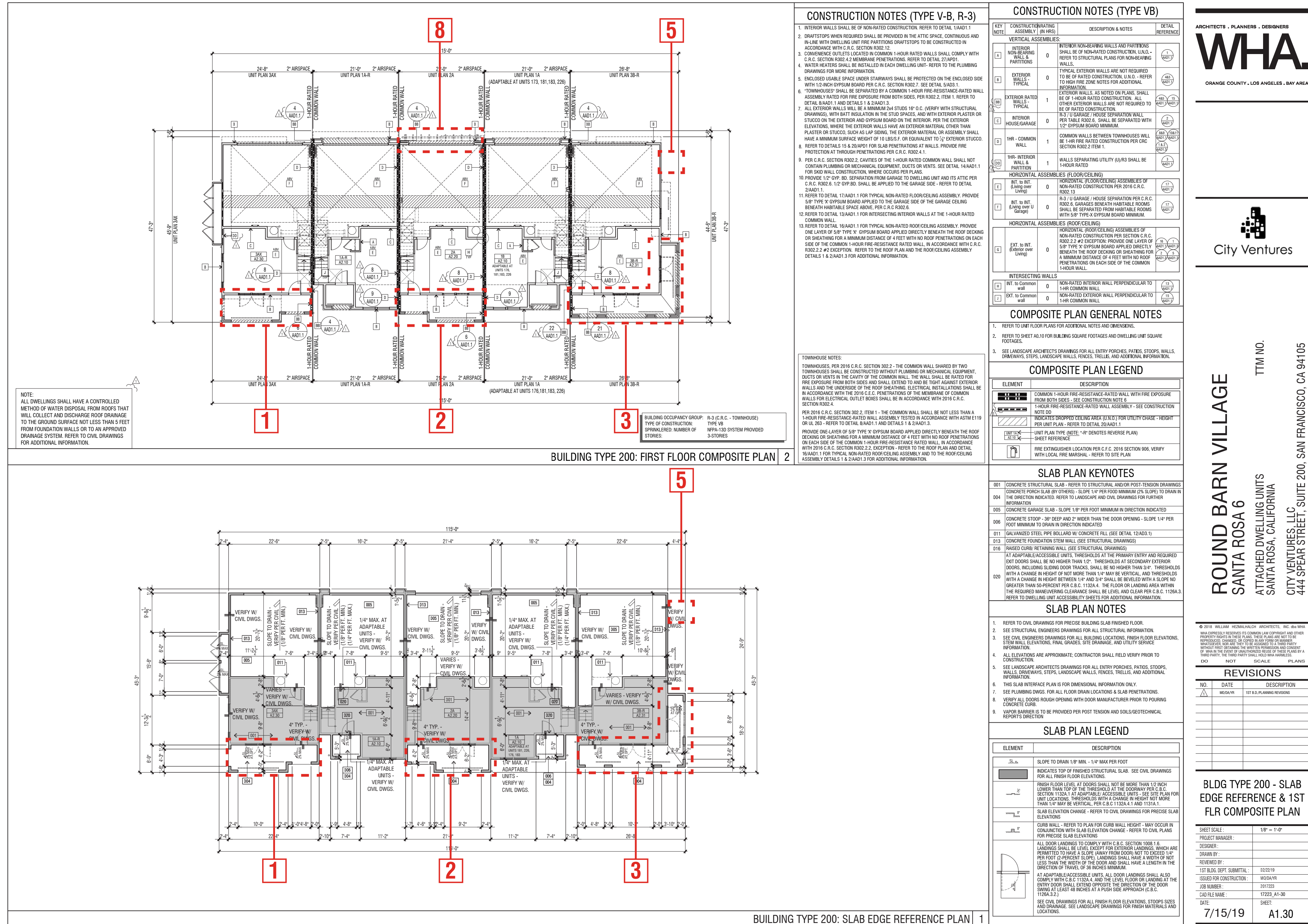
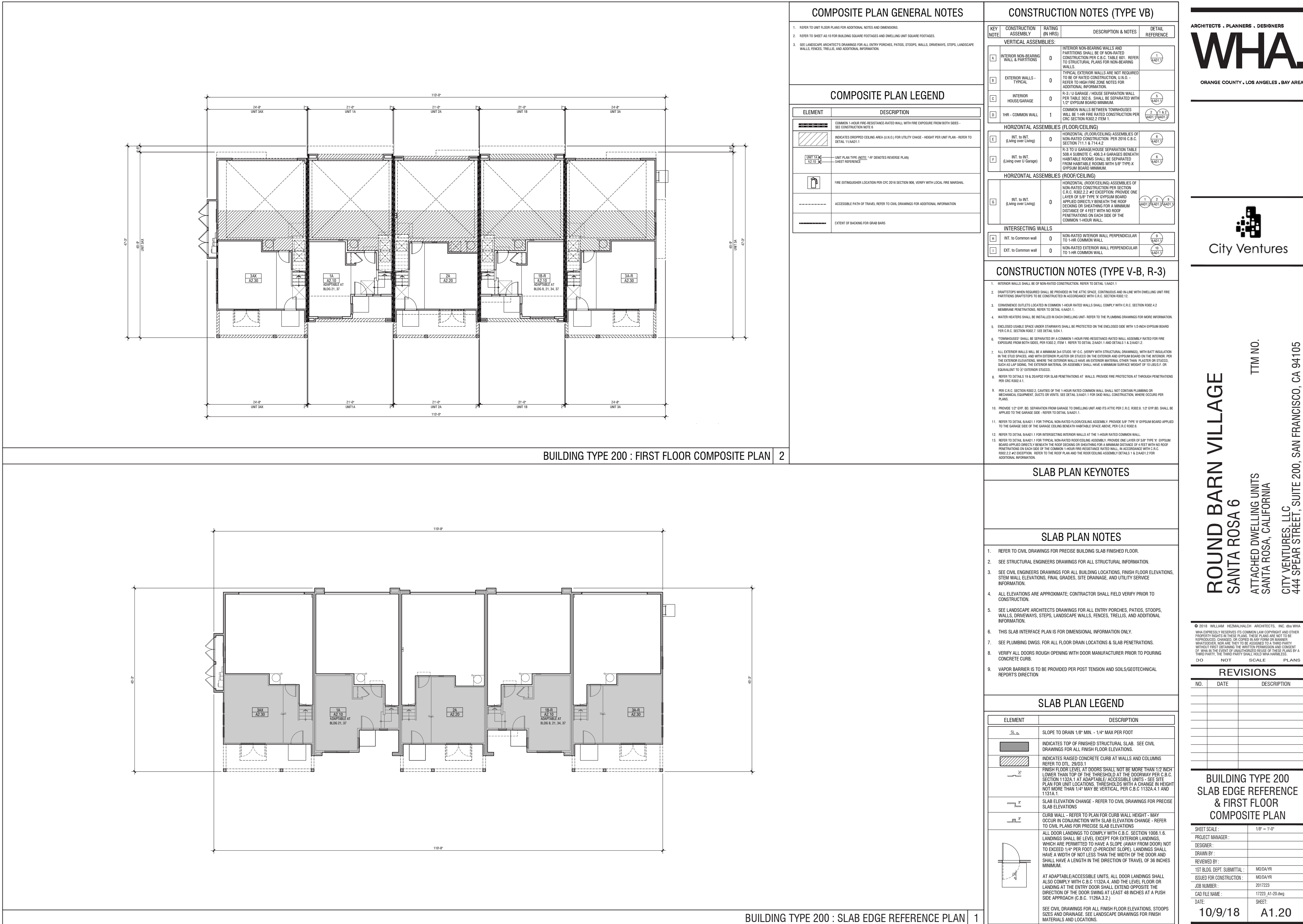
**WHA.**

ORANGE COUNTY . LOS ANGELES . BAY AREA





**CURRENT EXISTING 2ND BUILDING DEPARTMENT  
SUBMITTAL SET**



## REVISIONS:

- 1 Unit 3A Added Covered Deck | Created Double Gable | Reconfigured Windows | Removed Awnings Above Windows | Removed / Replaced Horizontal Siding with Boards & Batts.
  - 2 Unit 2A Added Covered Deck | Created Double Gable | Reconfigured Windows | Removed Awnings Above Windows | Removed / Replaced Horizontal Siding with Boards & Batts.
  - 3 Unit 3B Added Wrap Around Deck / Reconfigured Porch | Added 3050 Window | Added Awning Above Deck Door and Windows at second level
  - 4 Added Gable/Sloped Roof
  - 5 Removed Ladder
  - 6 Revised Second Floor Massing at Kitchen
  - 7 Added Awning
  - 8 Added Trellis at Unit 2A, Typ.

## BUILDING TYPE 200 | Slab Edge & 1st Floor Plan Composite

SANTA ROSA, CA

# ROUND BARN VILLAGE

## A2.1

## DESIGN REVIEW APPLICATION

© 2019 WILLIAM HEZMALHALCH ARCHITECTS, INC. DBA WHA. | 2017223 | 09-06-19

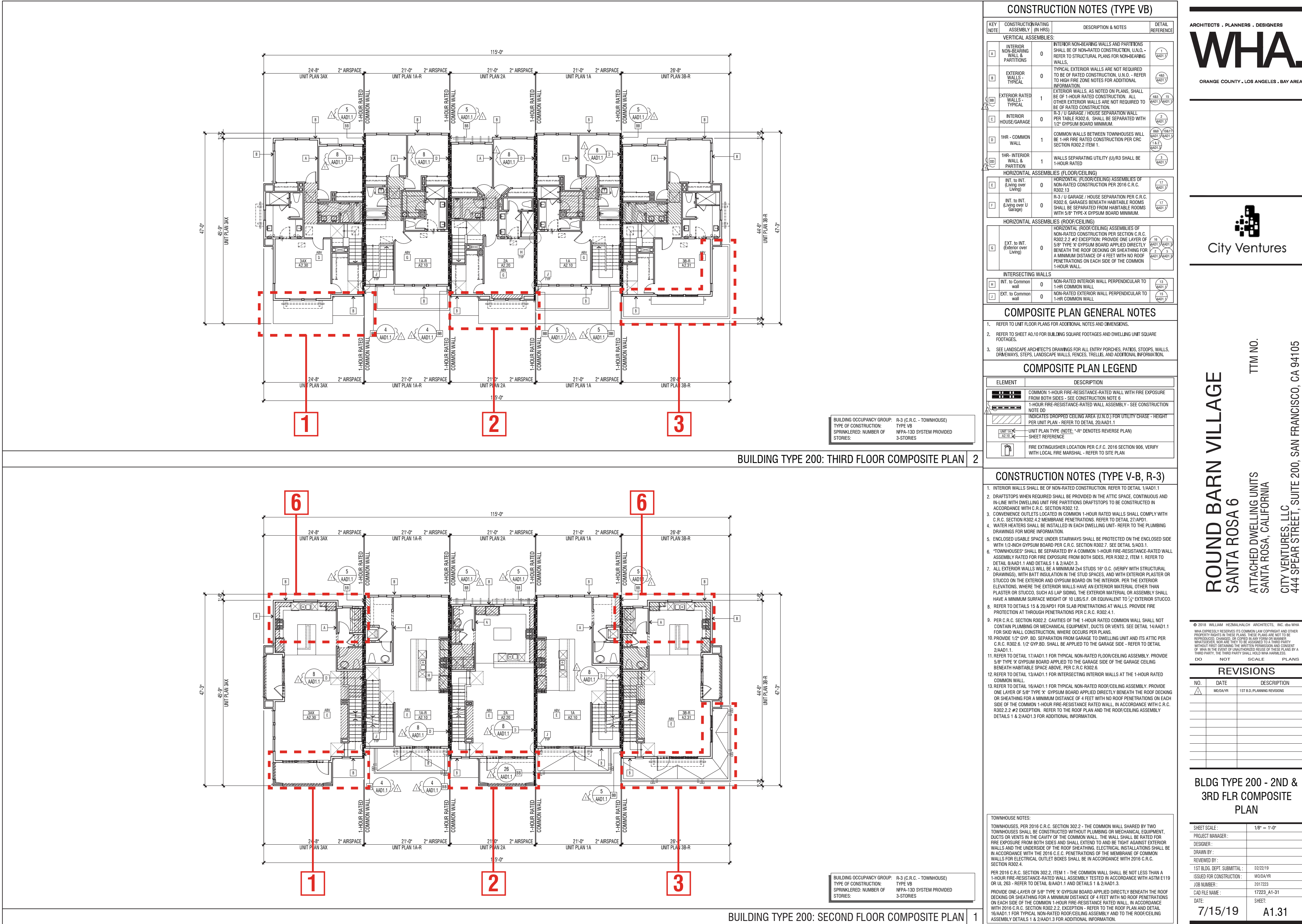
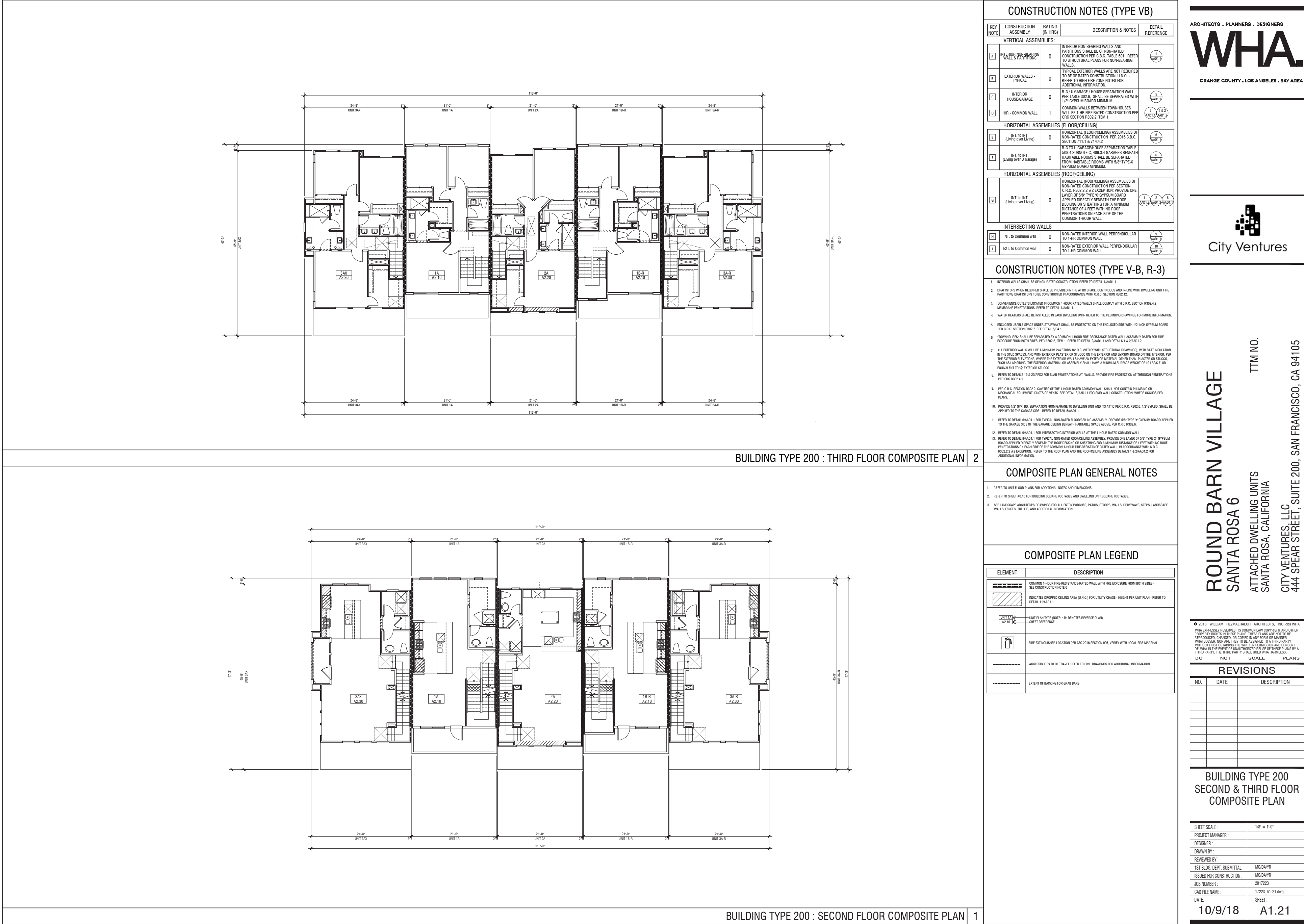
ARCHITECTS . PLANNERS . DESIGNERS

ORANGE COUNTY . LOS ANGELES . BAY AREA



APPROVED DRB SET 11/15/18

CURRENT EXISTING 2ND BUILDING DEPARTMENT SUBMITTAL SET



REVISIONS:

- 1 Unit 3A Added Covered Deck | Created Double Gable | Reconfigured Windows | Removed Awnings Above Windows | Removed / Replaced Horizontal Siding with Boards & Batts.
- 2 Unit 2A Added Covered Deck | Created Double Gable | Reconfigured Windows | Removed Awnings Above Windows | Removed / Replaced Horizontal Siding with Boards & Batts.
- 3 Unit 3B Added Wrap Around Deck / Reconfigured Porch | Added 3050 Window | Added Awning Above Deck Door and Windows at second level
- 4 Added Gable/Sloped Roof
- 5 Removed Ladder
- 6 Revised Second Floor Massing at Kitchen
- 7 Added Awning
- 8 Added Trellis at Unit 2A, Typ.

BUILDING TYPE 200 | 2nd & 3rd Floor Plan Composite

ROUND BARN VILLAGE

SANTA ROSA, CA

A2.2

DESIGN REVIEW APPLICATION

© 2019 WILLIAM HEZMALHALCH ARCHITECTS, INC. DBA WHA. | 2017223 | 09-06-19

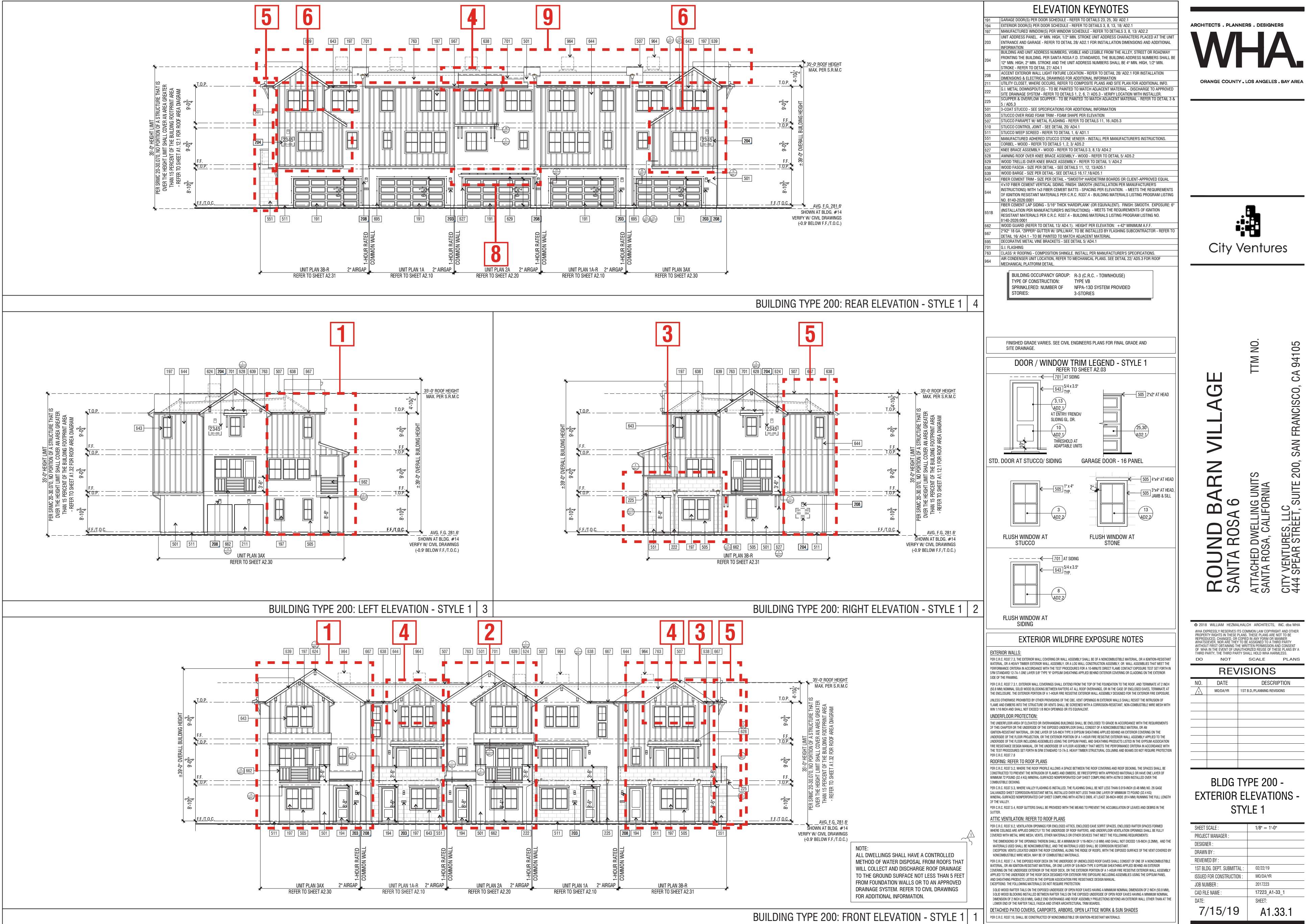
ORANGE COUNTY . LOS ANGELES . BAY AREA







**CURRENT EXISTING 2ND BUILDING DEPARTMENT  
SUBMITTAL SET**



## REVISIONS

- 1 Unit 3A Added Covered Deck | Created Double Gable | Reconfigured Windows | Removed Awnings Above Windows | Removed / Replaced Horizontal Siding with Boards & Batts.
  - 2 Unit 2A Added Covered Deck | Created Double Gable | Reconfigured Windows | Removed Awnings Above Windows | Removed / Replaced Horizontal Siding with Boards & Batts.
  - 3 Unit 3B Added Wrap Around Deck / Reconfigured Porch | Added 3050 Window | Added Awning Above Deck Door and Windows at second level
  - 4 Added Gable/Sloped Roof
  - 5 Removed Ladder
  - 6 Revised Second Floor Massing at Kitchen
  - 7 Added Awning
  - 8 Added Trellis at Unit 2A, Typ.
  - 9 Per City Fire Request The Rear Elevation Roof Design Has Been Modified

## BUILDING TYPE 200 | Style 1 Exterior Elevations

# ROUND BARN VILLAGE

SANTA ROSA, CA



City Ventures

A2.4

0 8 16

DESIGN REVIEW APPLICATION

© 2019 WILLIAM HEZMALHALCH ARCHITECTS, INC. DBA WHA. | 2017223 | 09-06-19

ARCHITECTS . PLANNERS . DESIGNERS

**WHA.**

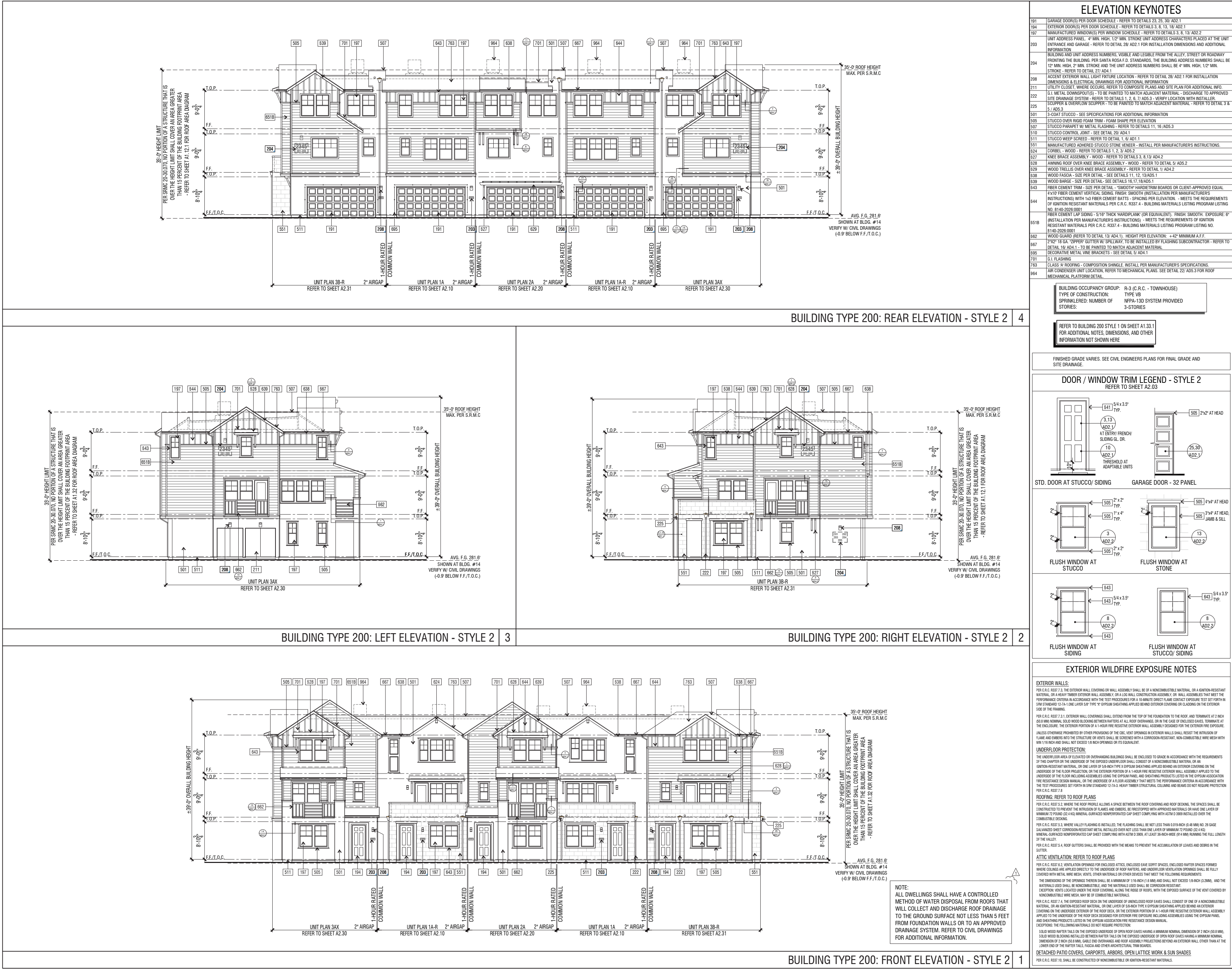
ORANGE COUNTY . LOS ANGELES . BAY AREA

ORANGE COUNTY . LOS ANGELES . BAY AREA



APPROVED DRB SET 11/15/18

CURRENT EXISTING 2ND BUILDING DEPARTMENT SUBMITTAL SET



Not Part of Original Design

BUILDING TYPE 200 | Style 2 Exterior Elevations

ROUND BARN VILLAGE

SANTA ROSA, CA

A2.5

DESIGN REVIEW APPLICATION

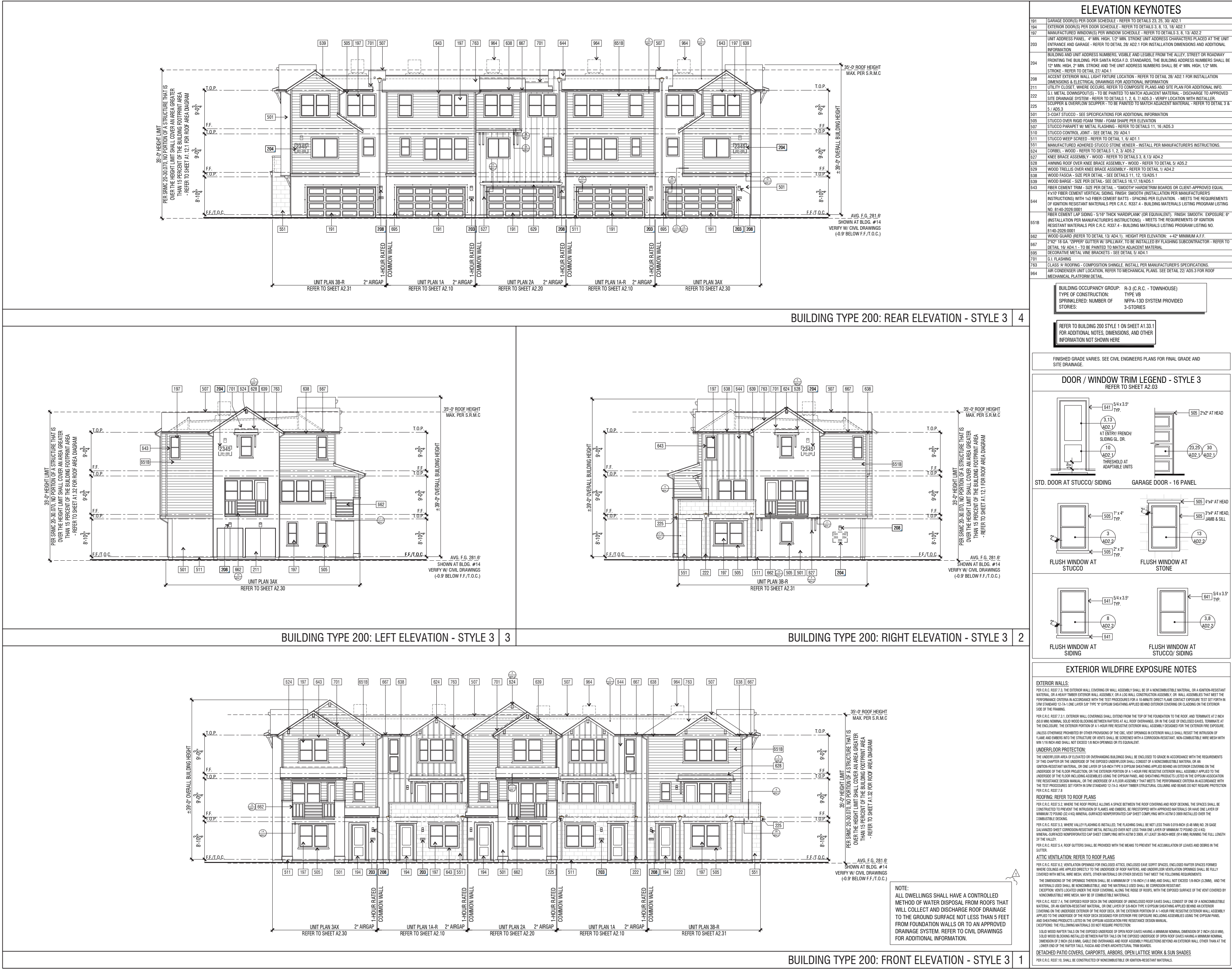
© 2019 WILLIAM HEZMALHALCH ARCHITECTS, INC. DBA WHA. | 2017223 | 09-06-19





APPROVED DRB SET 11/15/18

CURRENT EXISTING 2ND BUILDING DEPARTMENT SUBMITTAL SET



Not Part of Original Design

BUILDING TYPE 200 | Style 3 Exterior Elevations

ROUND BARN VILLAGE

SANTA ROSA, CA

A2.6

DESIGN REVIEW APPLICATION

© 2019 WILLIAM HEZMALHALCH ARCHITECTS, INC. DBA WHA. | 2017223 | 09-06-19





**CURRENT EXISTING 2ND BUILDING DEPARTMENT  
SUBMITTAL SET**



Not Part of Original Design

## BUILDING TYPE 201A | Alternative Exterior Elevations

## ROUND BARN VILLAGE

SANTA ROSA, CA

## A2.7

## DESIGN REVIEW APPLICATION

© 2019 WILLIAM HEZMALHALCH ARCHITECTS, INC. DBA WHA. | 2017223 | 09-06-19

ARCHITECTS . PLANNERS . DESIGNERS

WHA

ORANGE COUNTY . LOS ANGELES . BAY AREA



City Ventures



City Ventures

**SANTA ROSA 6**  
ATTACHED DWELLING UNITS  
SANTA ROSA, CALIFORNIA

TTM NO.

CITY VENTURES, LLC  
444 SPEAR STREET, SUITE 200, SAN FRANCISCO, CA 94105

[illegible]

LDG TYPE 201A -  
ERNATE EXTERIOR  
ELEVATIONS

DATE:	1/8" = 1'-0"
DRAWN BY:	
CHECKED BY:	
DATE:	
PROJECT SUBMITTAL:	02/02/19
CONSTRUCTION:	03/04/19
DATE:	04/17/23
FILE:	_class_17222_A1-44
	SHEET:
5/19	A1.44