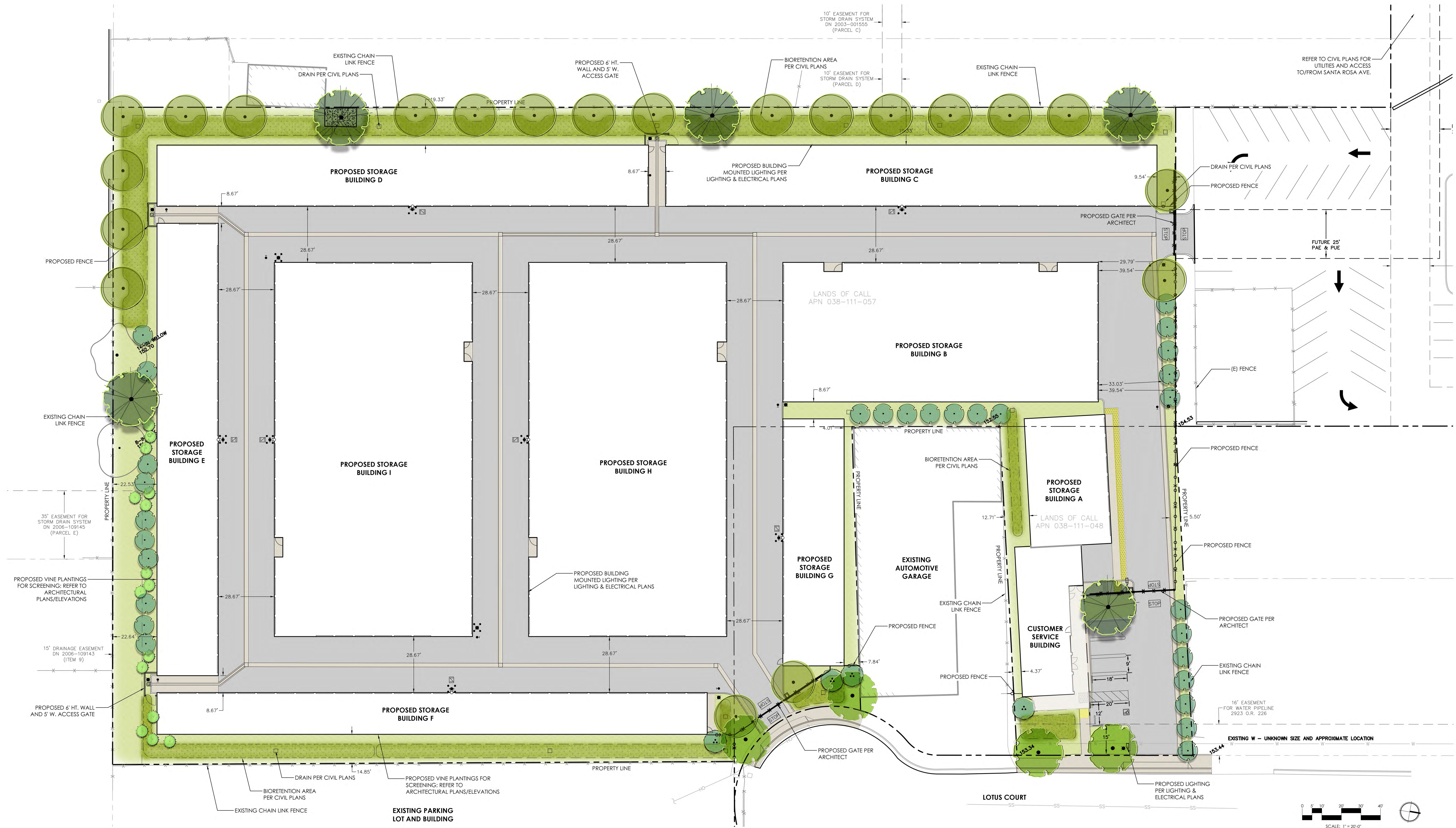


SANTA ROSA SELF-STORAGE

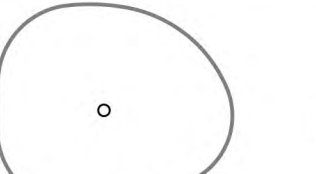


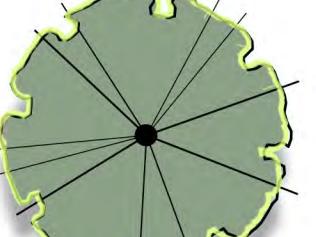




APN 038-111-011, -057

Lotus Court

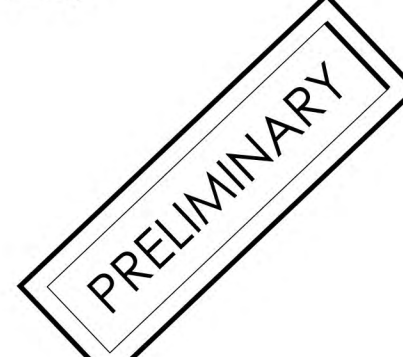
Santa Rosa, CA 95404



CANDIDATE PLANT LIST

	EXISTING TREE TO REMAIN				SCREENING HEDGE Myrica californica / Pacific Wax Myrtle Podocarpus gracillior / Fern Pine Taxus x media 'Hicksii' / Hicks Yew	SIZE 15 gal 15 gal 15 gal	WUCOLS Medium Medium Medium		ACCENT TREE Acer griseum / Paperbark Maple Arctostaphylos manzanita 'Dr. Hurd' / Dr. Hurd Manzanita Cercidium x 'Desert Museum' / Thornless Palo Verde Cercis occidentalis / Western Redbud Multi-trunk Chionanthus retusus / Chinese Fringe Tree	SIZE 24"box 24"box 24"box 15 gal 24"box	WUCOLS Medium Low Low Very Low Medium
	LARGE SPECIMEN TREE Platanus racemosa / California Sycamore Quercus agrifolia / Coast Live Oak Quercus lobata / Valley Oak	SIZE 36"box 36"box 36"box	WUCOLS Low Low Low		BIORETENTION PLANTINGS Achillea millefolium 'Sonoma Coast' / Sonoma Coast Yarrow Achillea x 'Coronation Gold' / Hybrid Yarrow Carex tumulicola / Berkeley Sedge Chondropetalum elephantinum / Large Cape Rush Chondropetalum tectorum 'El Campo' / Cape Rush Festuca occidentalis / Western Fescue Grass Festuca rubra 'Molate' / Molate Fescue Juncus patens 'Elk Blue' / Spreading Rush Lomandra longifolia 'Breeze' / Dwarf Mat Rush	SIZE 1 gal 1 gal 1 gal 1 gal 1 gal 1 gal 1 gal 1 gal 1 gal 1 gal	WUCOLS Low Low Low Low Low Low Low Low Low Low				
	STREET TREE Celtis australis / European Hackberry Ulmus x 'Frontier' / American Elm	SIZE 24"box 24"box	WUCOLS Low Low								
	MEDIUM TREE Koeleruteria paniculata 'Coral Sun' / Golden Rain Tree Pistacia chinensis / Chinese Pistache Multi-Trunk	SIZE 24"box 24"box	WUCOLS Low Low								
	COLUMNAR TREE Carpinus betulus 'Franz Fontaine' / Franz Fontaine Hornbeam Ginkgo biloba 'Fastigiata' / Fastigiata Maidenhair Tree Quercus robur 'Fastigiata' / Pyramidal English Oak	SIZE 24"box 24"box 24"box	WUCOLS Medium Medium Medium								

Stamp



© Copyright 2019 QUADRIGA landscape architecture & planning, inc.

Issuances & Revisions

No. Description Date



MAWA CALCULATION

Maximum Applied Water Allowance (MAWA) <b>COMMERCIAL</b>									
MAWA = (ETo) (0.62)/[(0.45x LA) + (0.55 x SLA)]									
Where:									
ETo = Annual Net Reference Evapotranspiration (inches)									
0.45 = ET Adjustment Factor									
LA = Landscaped Area (square feet)									
0.62 = Conversion factor (to gallons per square foot)									
SLA = Portion of the landscape area identified as Special Landscape Area (square feet)									
0.55 = the additional ET adjustment factor for Special Landscape Area (1.0 - 0.45 = 0.55)									
A.) Net Evapotranspiration Calculation									
43.9 <i>(Annual ETo)</i>									
27.2 <i>(Annual Rainfall)</i>		x .25		=		6.80 <i>(Effective Rainfall)</i>			
Net Evapotranspiration Calculation		= Annual ETo		-		Effective Rainfall		= 37.10	
B.) Adjusted Landscape Area Calculation									
29260 <i>(Landscaped Area)</i>		x 0.45				= 13167			
0 <i>(Special Landscaped Area)</i>		x 0.55				= 0			
				Sum of Adjusted Landscape Area		= 13167			
MAWA =		37.10		x 0.62		x 13167		= 302867 gallons	
Estimated Total Water Use (ETWU)									
A.) Net Evapotranspiration Calculation									
Net Evapotranspiration Calculation		= Annual ETo		-		Effective Rainfall		= 37.10	
B.) Adjusted Landscape Area Calculation									
0 <i>(Very low water use plant sqft)</i>		x 0.1				= 0			
23260 <i>(Low water use plant sqft)</i>		x 0.3				= 6978			
6000 <i>(Moderate water use plant sqft)</i>		x 0.6				= 3600			
0 <i>(High water use plant sqft)</i>		x 1.0				= 0			
				Sum of Adjusted Landscape Area		= 10,578			
ETWU =		37.10		x 0.62		x 10,578		/ 0.81 = 300389 gallons	
Irrigation Efficiency Factor									
Square footage of landscape on drip						100			
Square footage of landscape on spray						0			
Total square footage of landscape						100			
Adjusted Irrigation Efficiency Factor						0.81			

STATEMENT OF COMPLIANCE

All irrigation and planting design will comply with the criteria of local and state Water Resources Model Water Efficient Landscape Ordinances and will apply them for the efficient use of water in the landscape design plan.

IRRIGATION STATEMENT

A smart controller with rain sensor and automatic shut-off capabilities will be installed to control all irrigation zones throughout the project. Planting areas will be separated based on hydrozones, exposure, and size of zone. Sub-surface, high-efficiency inline drip irrigation will be utilized for all planting areas including the bioretention areas. Trees will be on separate valves. Trees will be irrigated with one (1) surface bubbler and one (1) root zone bubbler.

FENCING IMAGE



8ft Tall Black Steel Security Fencing

PLANTING IMAGERY



Quercus lobata



Koelreuteria paniculata



Celtis australis



Quercus robur 'Fastigiata'



Arctostaphylos 'Dr. Hurd'



Podocarpus gracilior



Arctostaphylos 'Emerald Carpet'



Salvia clevelandii 'Allen Chickering'



Achillea millefolium 'Sonoma Coast'



Juncus patens 'Elk Blue'



Parthenocissus tricuspidata