



Recess Self-Storage

A Mixed-Use Development
4224 Hwy 12



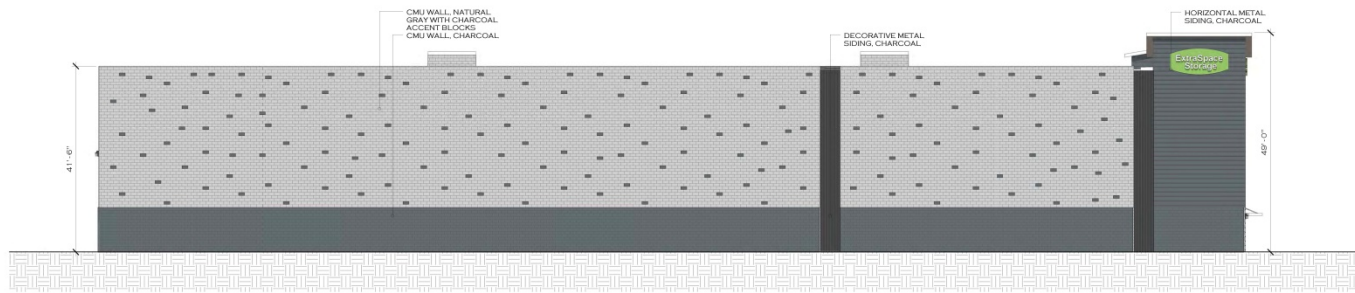






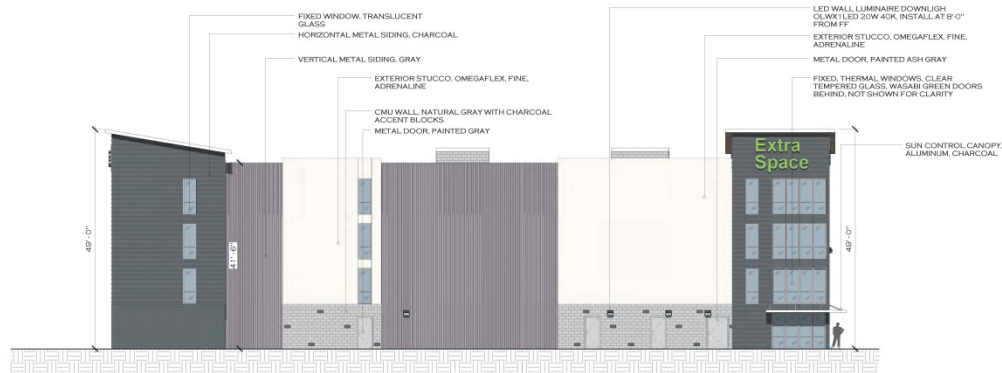
Recess Self-Storage

Elevations



NORTHEAST ELEVATION

SCALE 1" = 10'-0"



NORTHWEST ELEVATION

SCALE 1" = 10'-0"

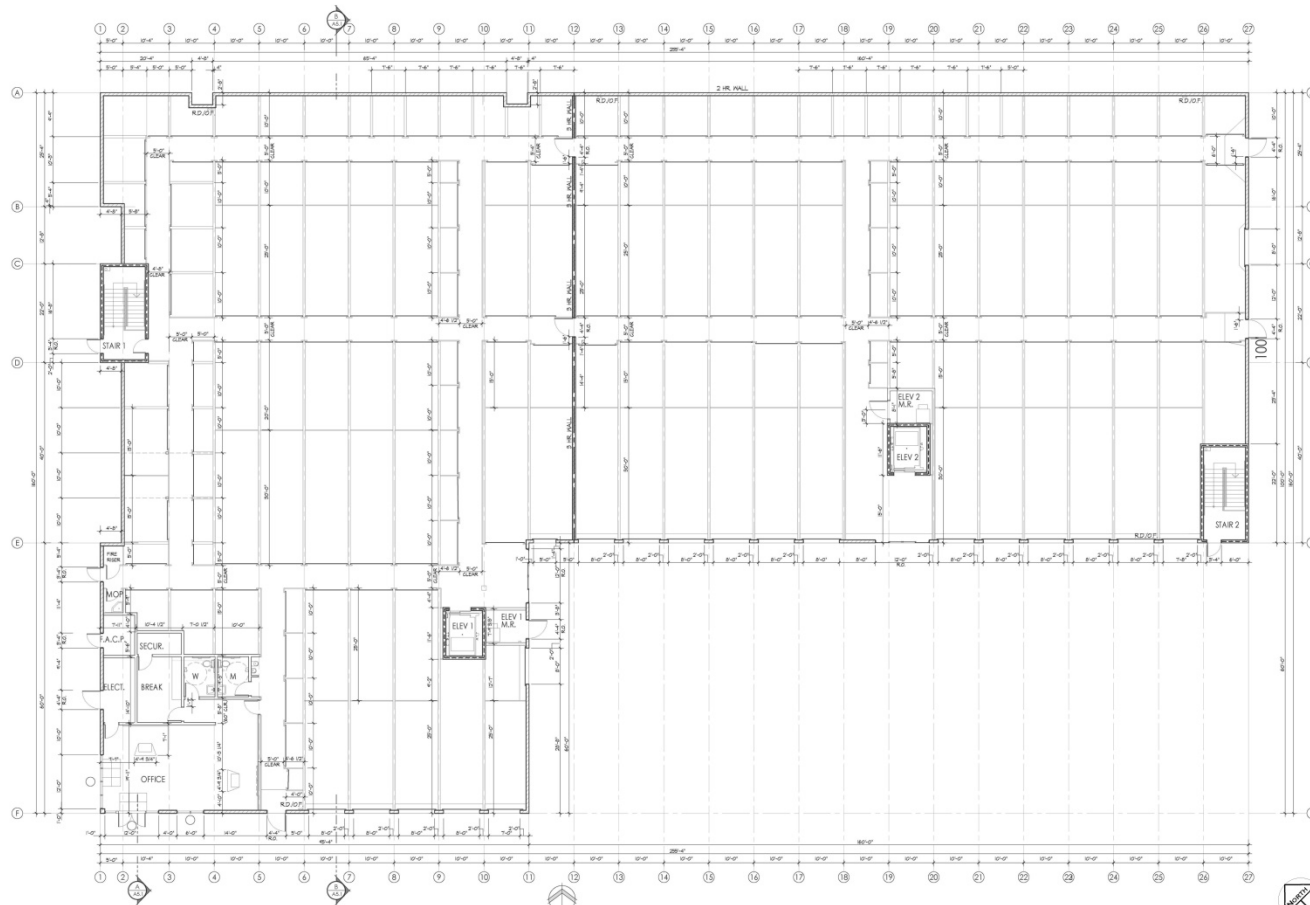
ISSUED FOR	18 Sept. 2019	DESIGN REVIEW	 RECESS 85 KEYSTONE AVENUE, SUITE E RENO, NEVADA 89503 TEL 775.357.6506	DRAWN BY: CRN	SCALE: 1" = 10'-0"	RECESS STORAGE 4224 HWY 12 SANTA ROSA, CA 95409 SONOMA COUNTY APN 032-010-005	 SHEET CONTENT BUILDING ELEVATION	DWG # DR 3.11
	DATE	DESCRIPTION		CHECKED BY: CRN SUBMITTED BY: AR				



ISSUED FOR	18 Sept. 2019	DESIGN REVIEW	 ARECESS 80 SANYONE AVENUE, SUITE E RENO, NEVADA 89503 TEL: (775) 365-0006	DRAWN BY: CRN DESIGNED BY: CRN CHECKED BY: SUBMITTED BY: AR	SCALE: 1" = 10'-0"	RECESS STORAGE 4224 HWY 12 SANTA ROSA, CA 95409 SONOMA COUNTY APN 032010005	 SHEET CONTENT BUILDING ELEVATIONS	DWG #
	DATE	DESCRIPTION						 DR 3.12

Recess Self-Storage

First Floor Plan



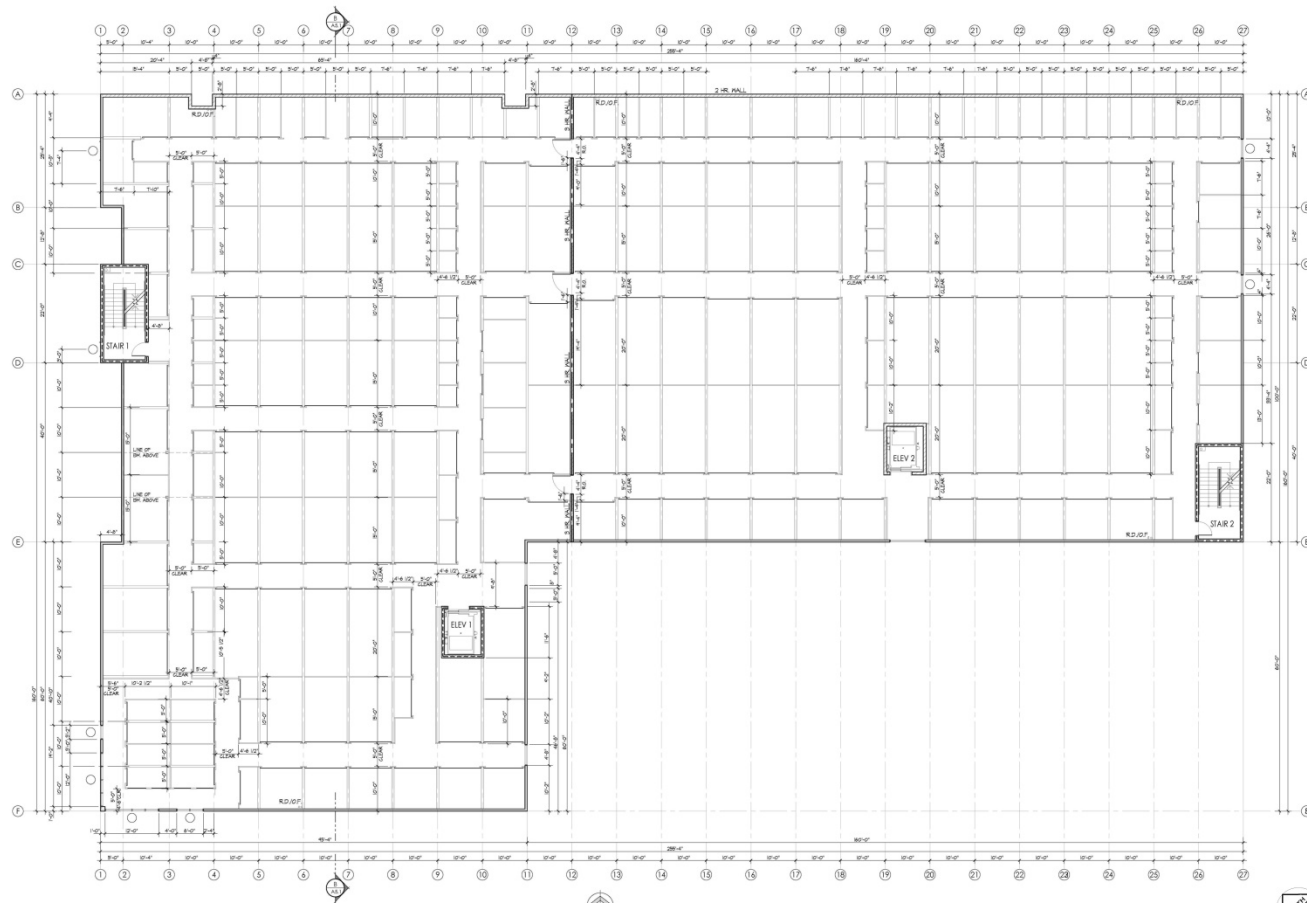
DR STORAGE FIRST LEVEL FINISH FLOOR

SCALE 1" = 10'-0"

ISSUED FOR	18 Sept. 2019	DESIGN REVIEW	 ARECESS 810 SEVENTH AVENUE, SUITE E RENO, NEVADA 89505 TEL: 775.357.6206	DRAWN BY: CRN DESIGNED BY: CRN CHECKED BY: SUBMITTED BY: AR	SCALE: 1" = 10'-0"	RECESS STORAGE 4224 HWY 12 SANTA ROSA, CA 95409 SONOMA COUNTY APN 032010005	 SHEET CONTENT STORAGE FIRST LEVEL FLOOR	DWG #
	DATE	DESCRIPTION		DR 2.11				

Recess Self-Storage

Second Floor Plan



DR STORAGE SECOND LEVEL FINISH FLOOR

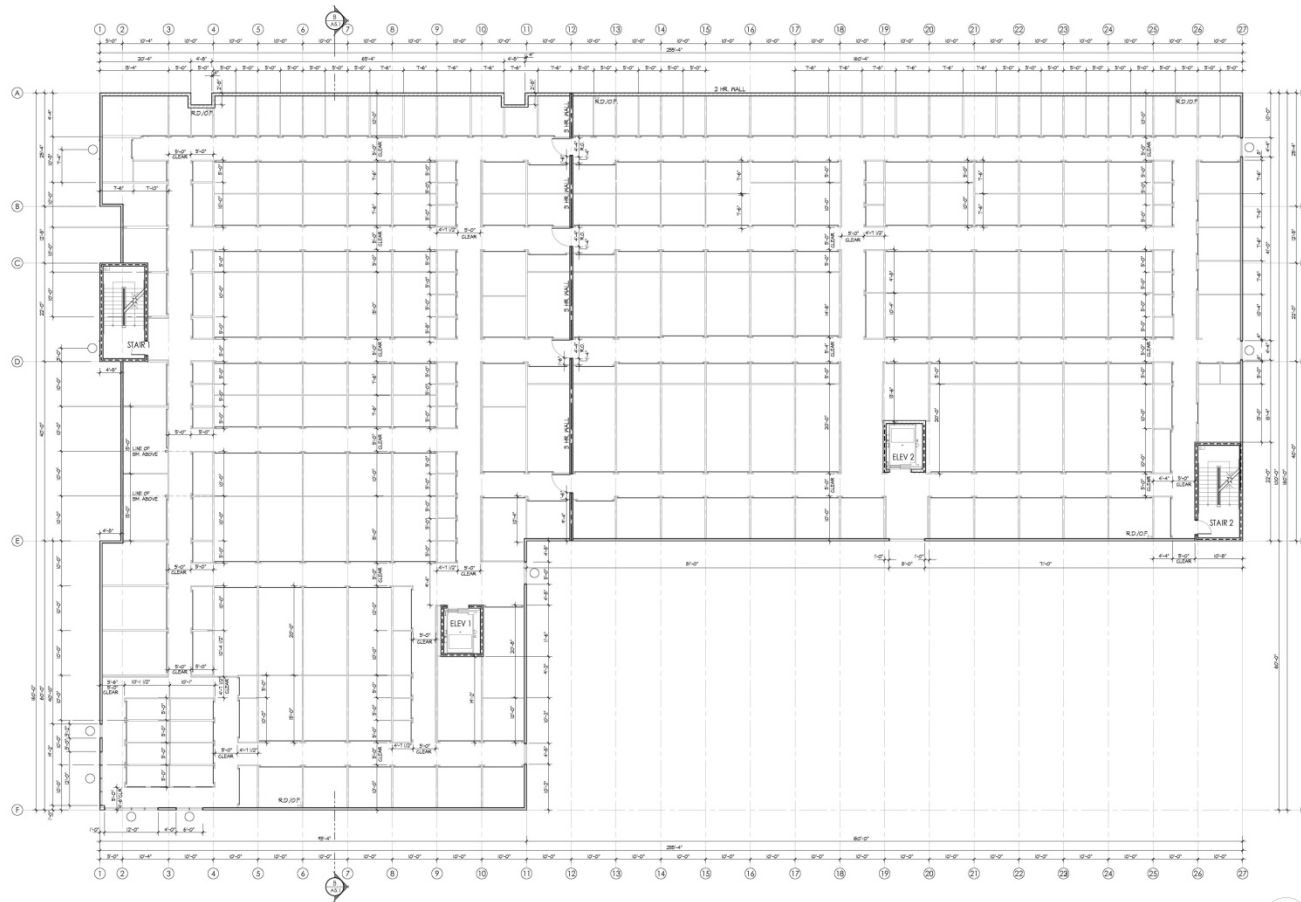
SCALE 1" = 10'-0"

ISSUED FOR	18 Sept. 2019	DESIGN REVIEW	 ARECESS <small>(30 KAYSTONE AVENUE, SUITE E RENO, NEVADA 89503 TEL: (775) 363-6006</small>	DRAWN BY: CRN DESIGNED BY: CRN CHECKED BY: SUBMITTED BY: AR	SCALE: 1" = 10'-0"	RECESS STORAGE 4224 HWY 12 SANTA ROSA, CA 95409 SONOMA COUNTY APN 032-010-005	SHEET CONTENT STORAGE SECOND LEVEL FLOOR	DWG #
	DATE	DESCRIPTION			DR 2.12			



Recess Self-Storage

Third Floor plan



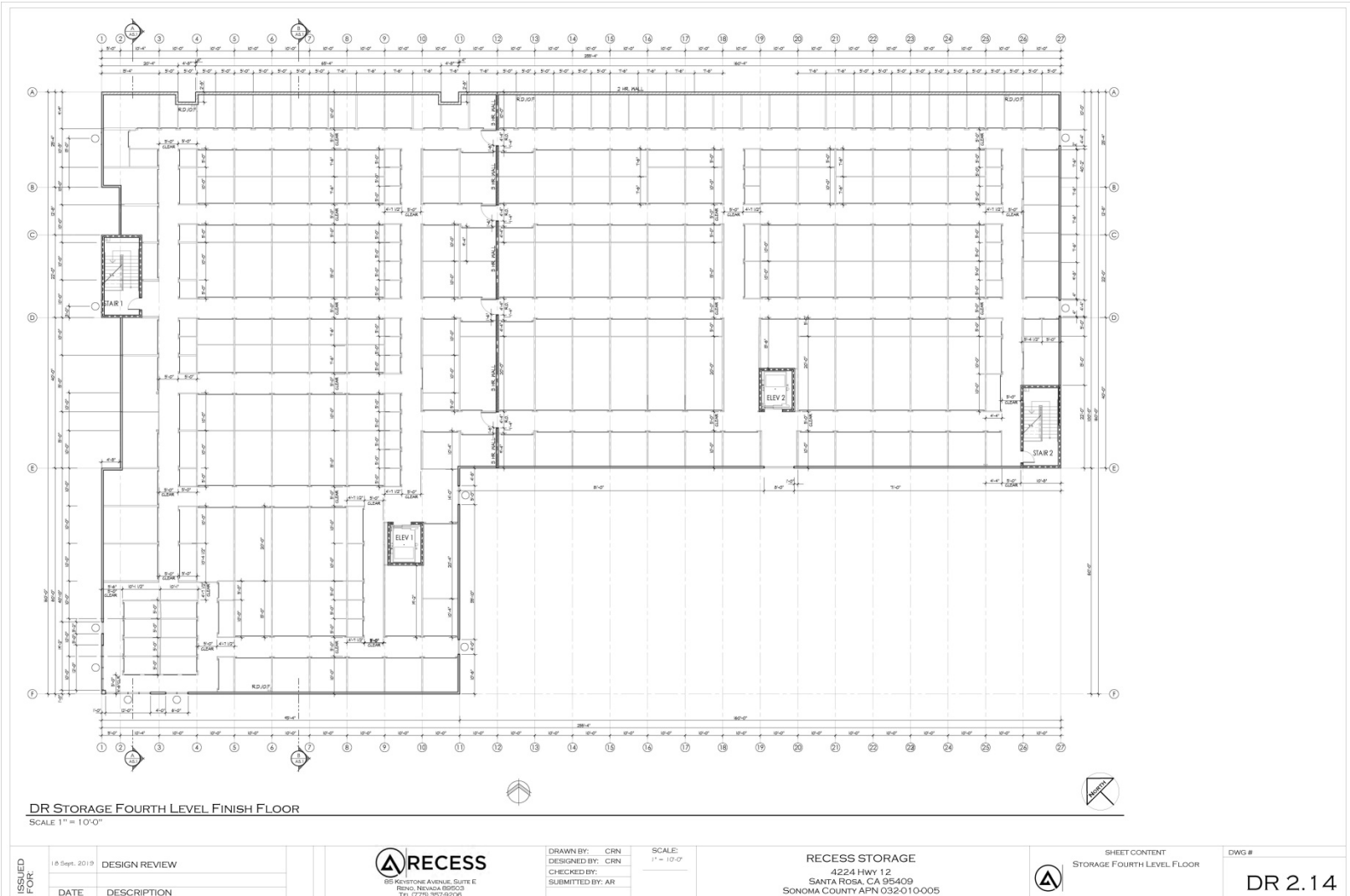
DR STORAGE THIRD LEVEL FINISH FLOOR
SCALE 1" = 10'-0"

ISSUED FOR:	18 Sept. 2019	DESIGN REVIEW	 RECESS 88 KENSTONE AVENUE, SUITE E RENO, NEVADA 89503 TEL 775 357 9208	DRAWN BY: CRN	SCALE: 1" = 10'-0"	RECESS STORAGE 4224 HWY 12 SANTA ROSA, CA 95409 SONOMA COUNTY APN 032-010-005		SHEET CONTENT STORAGE THIRD LEVEL FLOOR	DWG # DR 2.13
	DATE	DESCRIPTION		CHECKED BY: CRN SUBMITTED BY: AR					



Recess Self-Storage

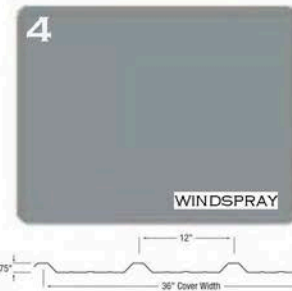
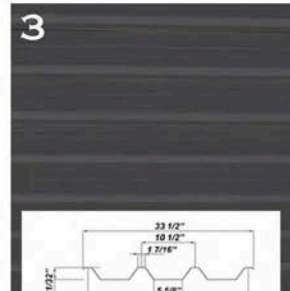
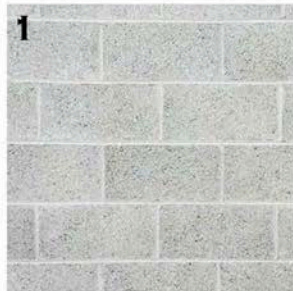
Fourth Floor Plan





Recess Self-Storage

Material Board



STORAGE EXTERIOR LIGHT
FIXTURES - OR EQUAL

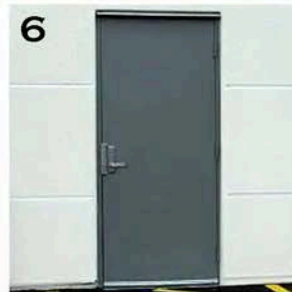
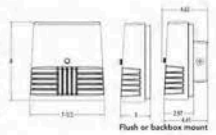


OLWX1 LED
LED Wall Luminaire



Specifications

Width: 2 1/2"
Height: 8"
Depth: 3"
Weight: 5 lbs

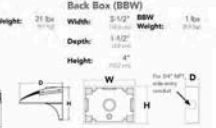


D-Series Size 2
LED Wall Luminaire



Specifications

Width: 15 1/2"
Height: 30"
Depth: 3 1/2"
Weight: 21 lbs

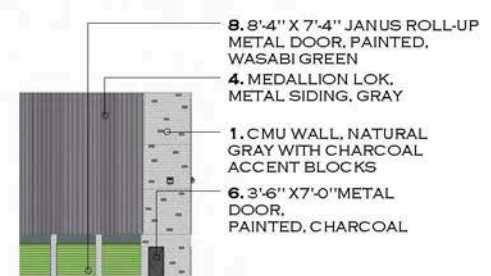


2. CMU WALL, CHARCOAL
4. MEDALLION LOK,
METAL SIDING, GRAY

3. DECORATIVE,
METAL SIDING,
CHARCOAL

5. EXTERIOR STUCCO,
OMEGAFLEX, FINE,
ADRENALINE

7. METAL DOOR, GRAY




8. 8'-4" X 7'-4" JANUS ROLL-UP
METAL DOOR, PAINTED,
WASABI GREEN

4. MEDALLION LOK,
METAL SIDING, GRAY

1. CMU WALL, NATURAL
GRAY WITH CHARCOAL
ACCENT BLOCKS

6. 3'-6" X 7'-0" METAL
DOOR,
PAINTED, CHARCOAL

ISSUED FOR:	18 SEPT. 2019	DESIGN REVIEW	 RECESS 85 KEYSTONE AVENUE, SUITE E RENO, NEVADA 89503 TEL (775) 747-6000	SELF STORAGE AND RESIDENTIAL COMPLEX 4224 HWY 12 SANTA ROSA, CA 95409 SONOMA COUNTY APN 032-010-005	DWG # MATERIALS STORAGE
	DATE	DESCRIPTION			

