

NKM Enterprises, Inc.

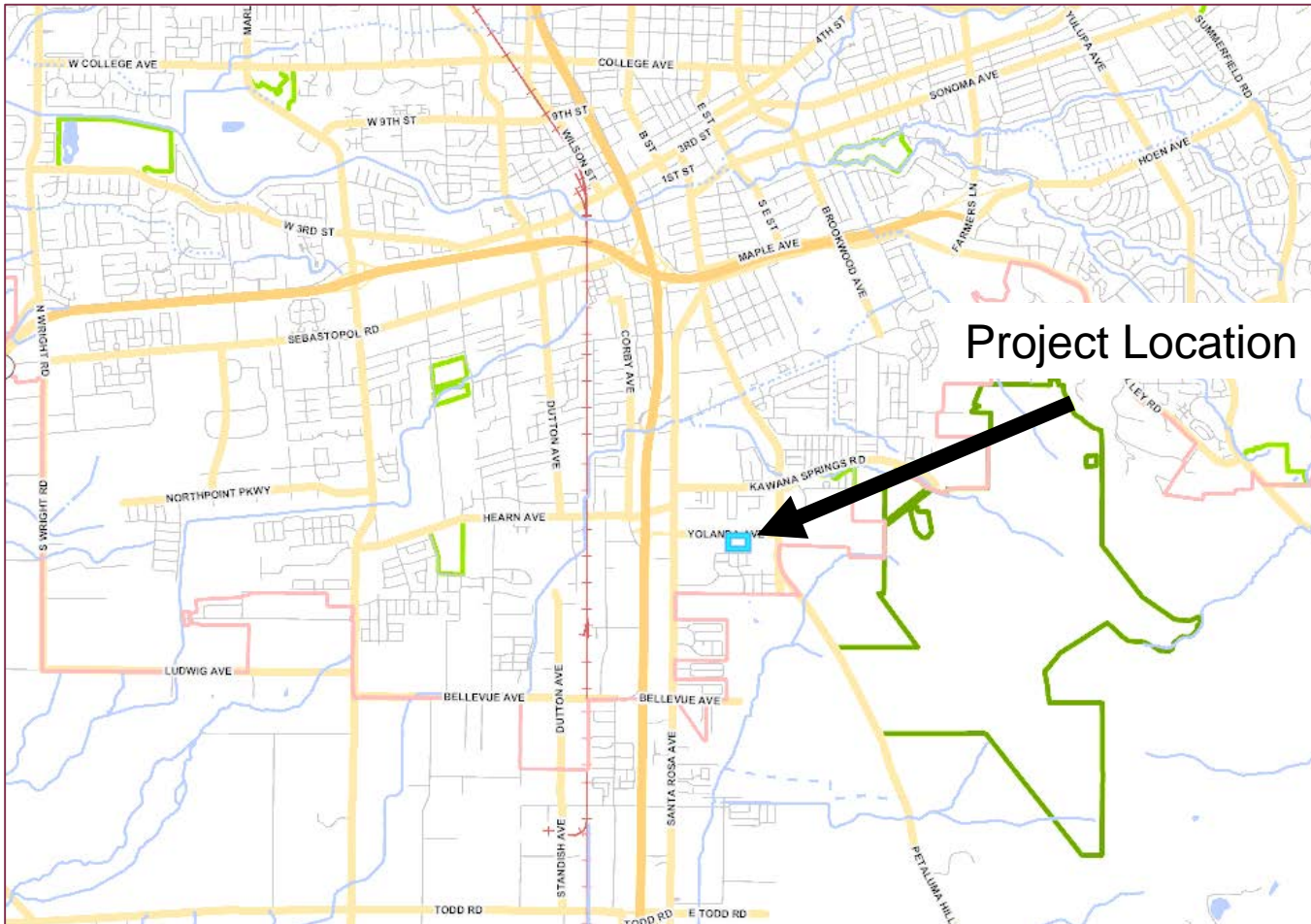
Conditional Use Permit Amendment

468 Yolanda Ave, Suites 303, 304 & 305

January 23, 2020

Kristinae Toomians
Senior Planner
Planning and Economic Development

468 Yolanda Ave



468 Yolanda Ave

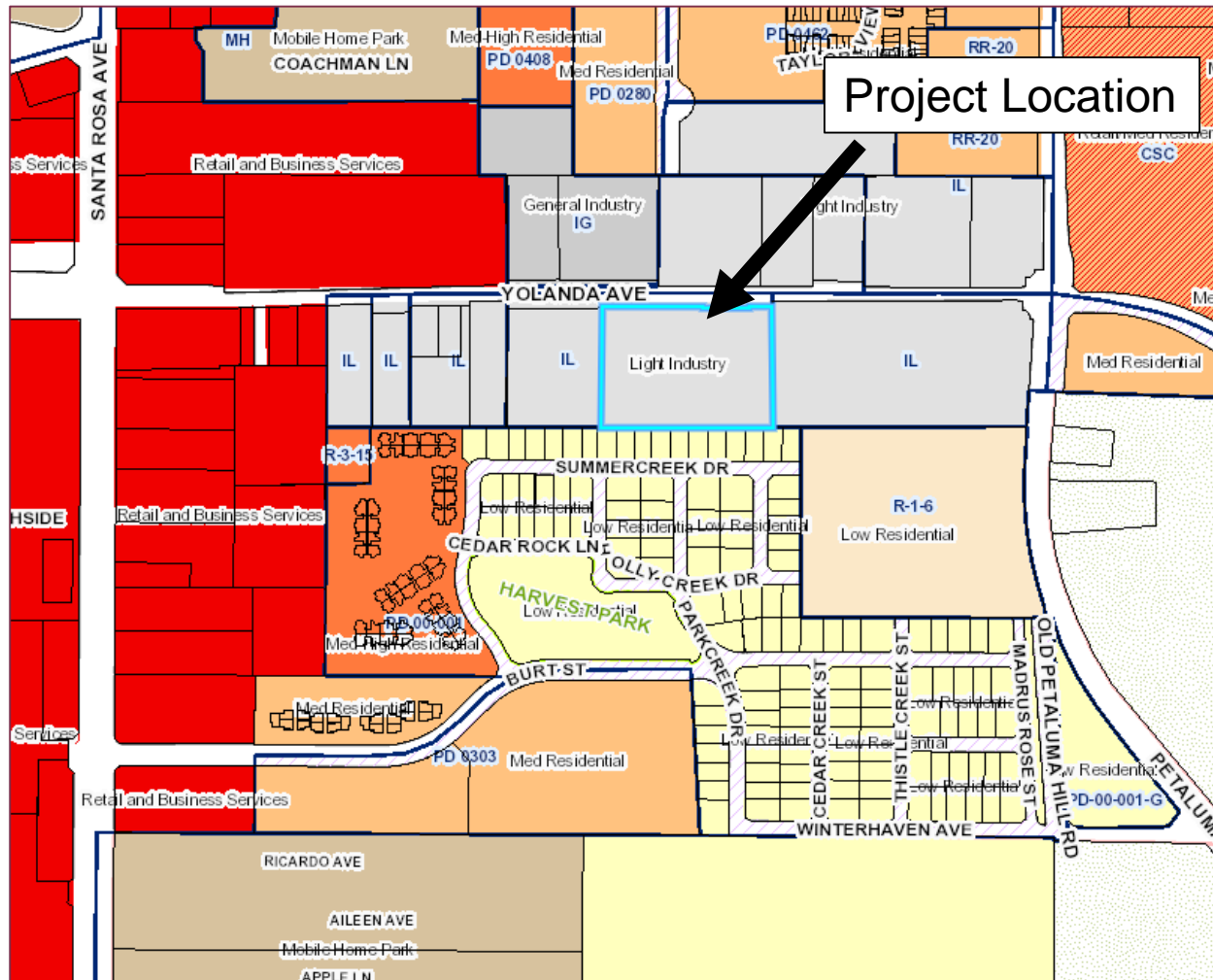


468 Yolanda Ave



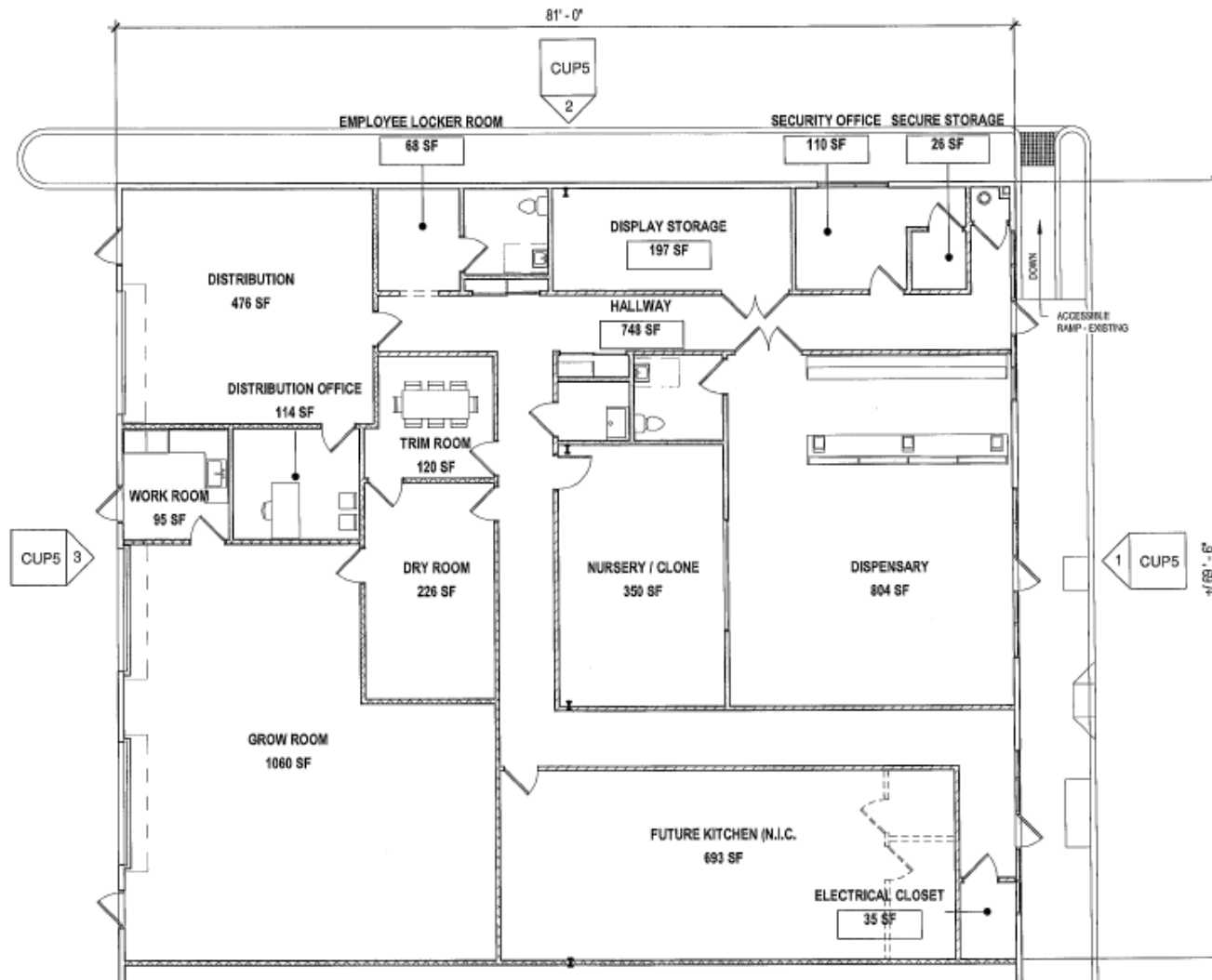
General Plan & Zoning

Light Industrial, IL





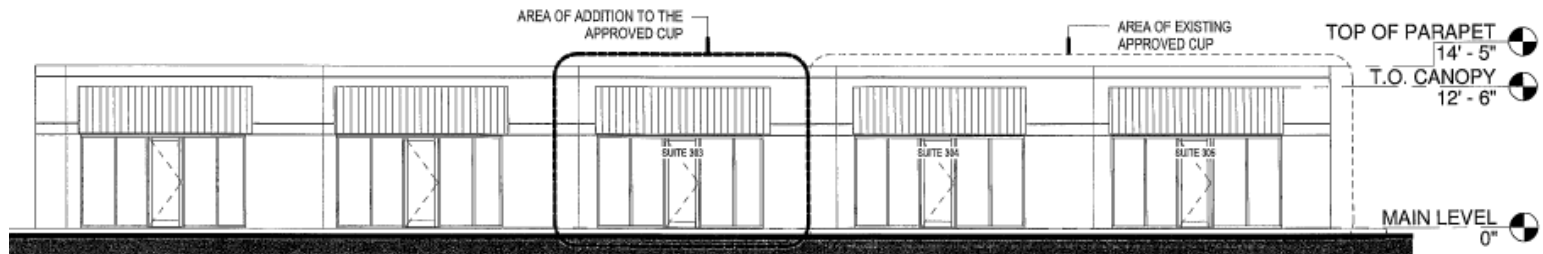
Floor Plan



468 Yolanda Ave



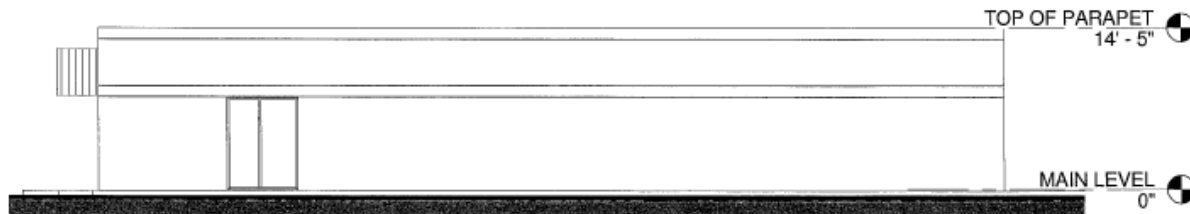
Elevations



1

NORTH EXTERIOR ELEVATION

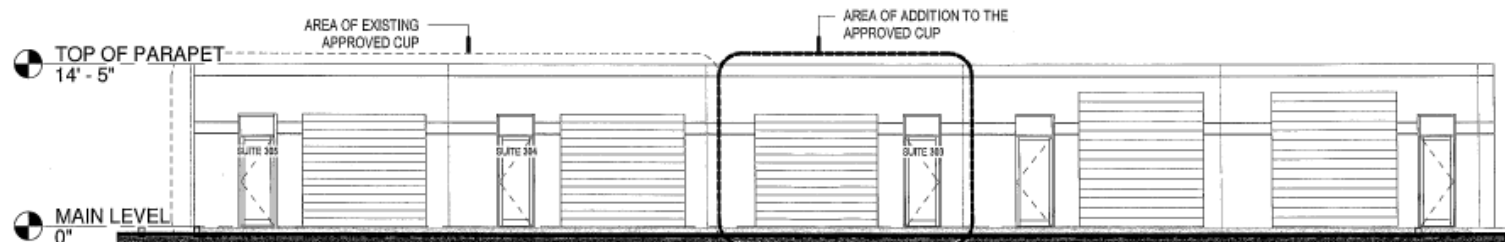
1" = 10'-0"



2

WEST EXTERIOR ELEVATION

1" = 10'-0"



3

SOUTH EXTERIOR ELEVATION

1" = 10'-0"

Environmental Review

California Environmental Quality Act (CEQA)

Found in compliance with CEQA:

- Pursuant to CEQA Guidelines Section 15303 – Involves a change of use.
- Pursuant to CEQA Guidelines Section 15301 – Involves minor modifications to an existing facility.

- The Planning and Economic Development Department recommends that the Planning Commission:
 - Approve a Conditional Use Permit Amendment to allow the expansion of a previously approved cannabis retail (dispensary) and delivery, cultivation, manufacturing, and distribution uses located at 468 Yolanda Avenue, Suites 303, 304, and 305.

Kristinae Toomians
Senior Planner
Planning and Economic Development
KToomians@srcity.org
(707) 543-4692

