

- KEY NOTES
- 1 (E) PARKING STALLS, TO BE RE-STRIPED WITH WHITE PAINT U.N.O.
 - 2 (E) CONCRETE PAVING AT ADA PARKING STALLS TO REMAIN; RE-STRIPE IN BLUE.
 - 3 (E) PHONE BOOTH TO REMAIN
 - 4 (N) PAVEMENT MARKINGS TO BE APPLIED AS SHOWN. SEE DETAILS 2 & 8/SP2.
 - 5 (E) YARD LIGHT TO REMAIN, APPLY (N) PAINT AT BASES AND LIGHT POLES TO MATCH (E) COLOR (TYP.). RELAMP WITH LED.
 - 6 (E) LANDSCAPING FIX AND REPAIR WHERE IS DAMAGED.
 - 7 (E) WATER METER TO REMAIN, PROTECT FROM DAMAGE DURING CONSTRUCTION
 - 8 (E) GAS METER TO REMAIN, PROTECT FROM DAMAGE DURING CONSTRUCTION
 - 9 (N) CONCRETE CURB, SEE CIVIL DRAWINGS.
 - 10 (E) TELEPHONE BOX TO REMAIN, PROTECT FROM DAMAGE DURING CONSTRUCTION
 - 11 (N) DRIVE-THRU GATEWAY, SEE SIGN PACKAGE FOR ADDITIONAL INFORMATION.
 - 12 (N) 6" STRIPING AS SHOWN, PAINT YELLOW
 - 13 (E) ELECTRIC BOX TO REMAIN, PROTECT FROM DAMAGE DURING CONSTRUCTION
 - 14 (E) BOLLARD TO REMAIN. RE-PAINT SAFETY YELLOW.
 - 15 (E) CONCRETE CURB, AS REQUIRED
 - 16 (E) MCDONALD'S DIRECTIONAL SIGN TO REMAIN; REPAINT AS NECESSARY TO MATCH EXISTING.
 - 17 (E) TRANSFORMER TO REMAIN
 - 18 (N) COD AND DIGITAL MENU BOARD, MAINTAIN 80' DISTANCE FROM CENTER OF D/T SLIDER WINDOW TO COD; SEE SIGN PACKAGE FOR ADDITIONAL INFORMATION
 - 19 (E) CMU TRASH ENCLOSURE AND GATE TO REMAIN; PAINT STUCCO AND GATE TO MATCH BUILDING
 - 20 (N) PRE-SELL BOARD; SEE SIGN PACKAGE FOR ADDITIONAL INFORMATION.
 - 21 (N) FORREST INFORMATIONAL SIGN #777 AT ORDER STATION. SEE DETAIL 3/CV2.
 - 22 PRESENTER WINDOW
 - 23 (N) FORREST PERMA INFORMATIONAL SIGN #778 AT CASHIER STATION.
 - 24 CASH BOOTH
 - 25 (N) 80'-0" DISTANCE FROM CENTER OF CASH BOOTH SLIDER WINDOW TO PRIMARY COD
 - 26 (N) BOLLARD
 - 27 (N) RAMPS WITH DETECTABLE WARNING SURFACE, SEE CIVIL
 - 28 (N) SIDEWALK, SEE CIVIL
 - 29 (N) CONC. CURB, SEE CIVIL
 - 30 AREA OF (N) BUILDING ADDITION

ASSESSOR'S PARCEL NUMBER 032-010-047

PARKING INFORMATION (PROPOSED)

NET - (-1) PARKING STALLS - REMOVED FOR NEW ACCESSIBLE PARKING AND PATH OF TRAVEL

PARKING INFORMATION (EXISTING)

ALL EXISTING PARKING STALLS TO REMAIN.

PLAN LEGEND

- | | | | |
|--|----------------------|--|-------------------------|
| | = CENTER LINE | | = POINT OF CURVATURE |
| | = COLUMN EXISTING | | = RADIUS |
| | = EQUAL | | = RIGHT OF WAY |
| | = FACE OF CURB | | = SHEET |
| | = FACE OF STUD | | = SIMILAR |
| | = FACE OF FOUNDATION | | = TYPICAL |
| | = NEW | | = FINISH SLAB ELEVATION |
-
- | | |
|--|---|
| | (E) CONCRETE CURB |
| | PROPERTY LINE |
| | - - - - - ACCESSIBLE PATH OF TRAVEL |
| | (N) CONCRETE CURB |
| | (N) CONCRETE PAVING |
| | (N) LANDSCAPE |
| | (N) PAVEMENT ARROWS PER DETAIL 2/SP2 (PAINTED WHITE) |
| | (N) DRIVE THRU STRIPING PER DETAIL 8/SP2 (PAINTED YELLOW) |
| | (E) LANDSCAPE, BUSH AND/OR TREE |

SHEET NO.	DRAWING TITLE:	BRAND REVIEW	PLANNING	PERMIT	CITY COMMENTS	PERMIT SUBMITTAL	DESCRIPTION	BY						
									PROJECT ADDRESS:	STATE SITE CODE:	DRAWN BY:			
												50 MISSION CIRCLE	004-1324	SG
PROJECT CAD FILE:	2016047031													

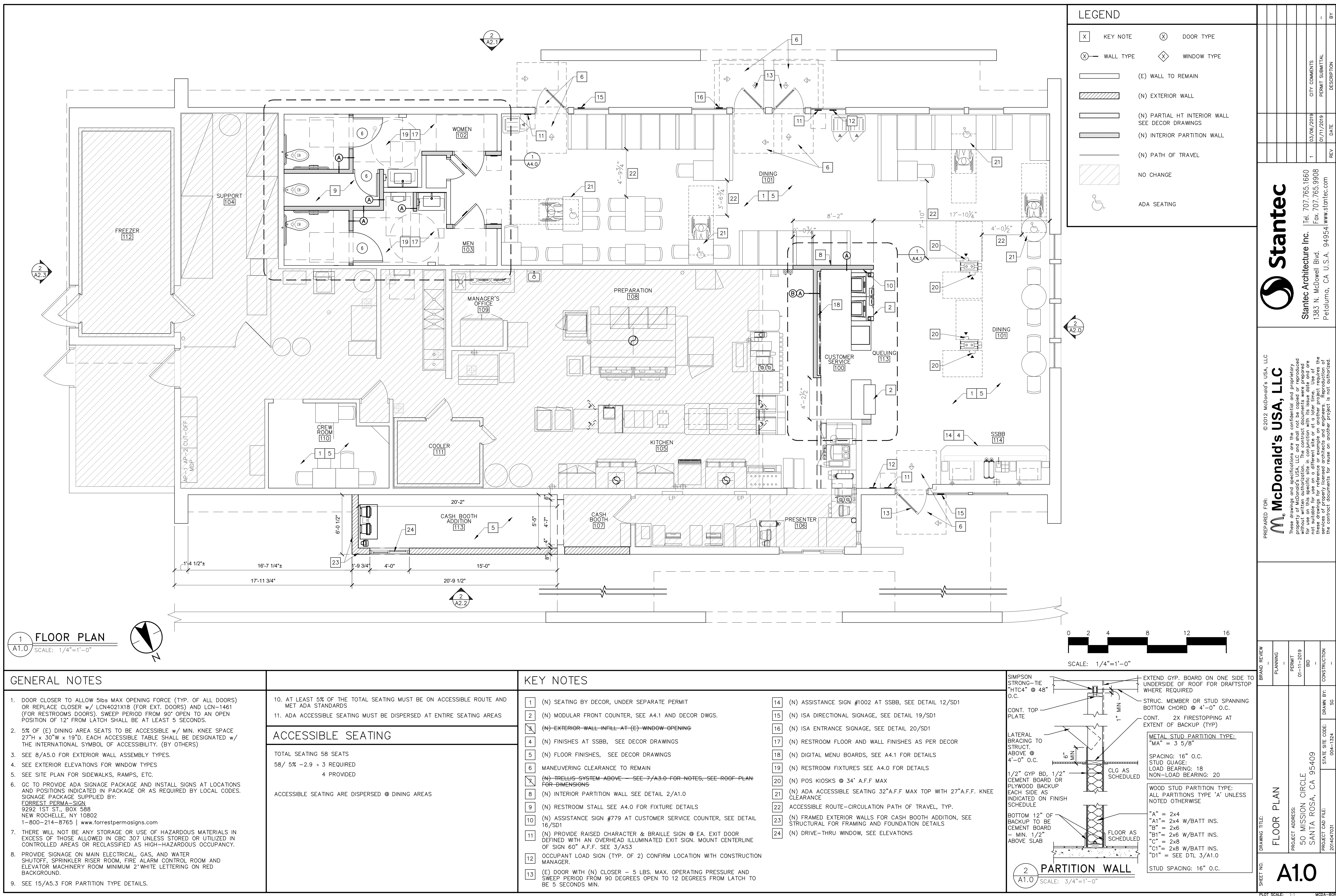
Stantec Architecture Inc. Tel. 707.765.1660
1383 N. McDowell Blvd. Fax. 707.765.9908
Petaluma, CA U.S.A. 94954 www.stantec.com

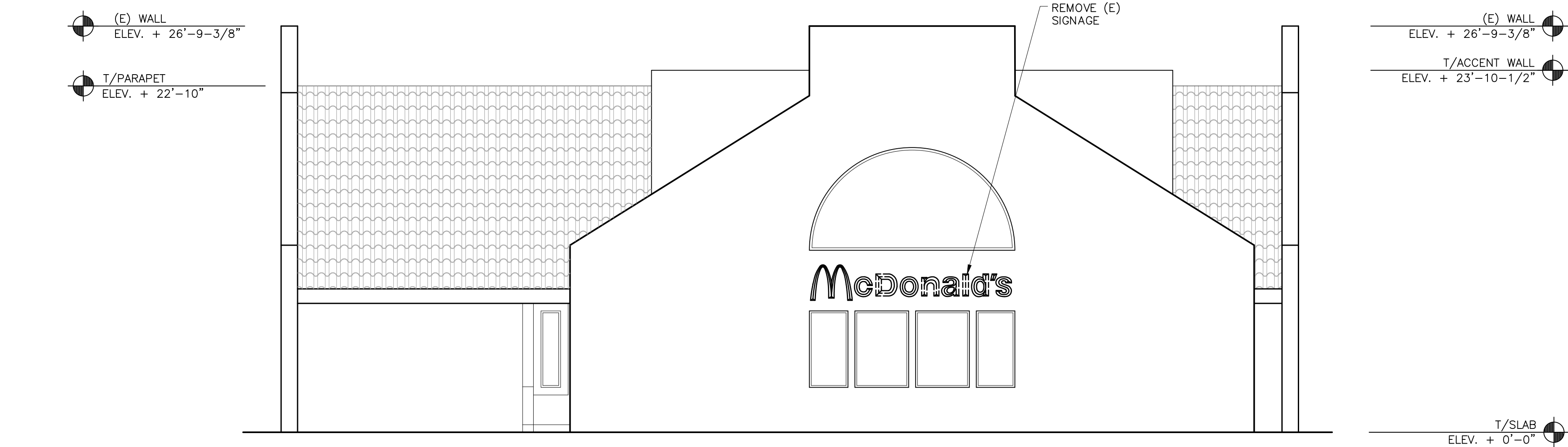
PREPARED FOR:

M. McDonald's USA, LLC

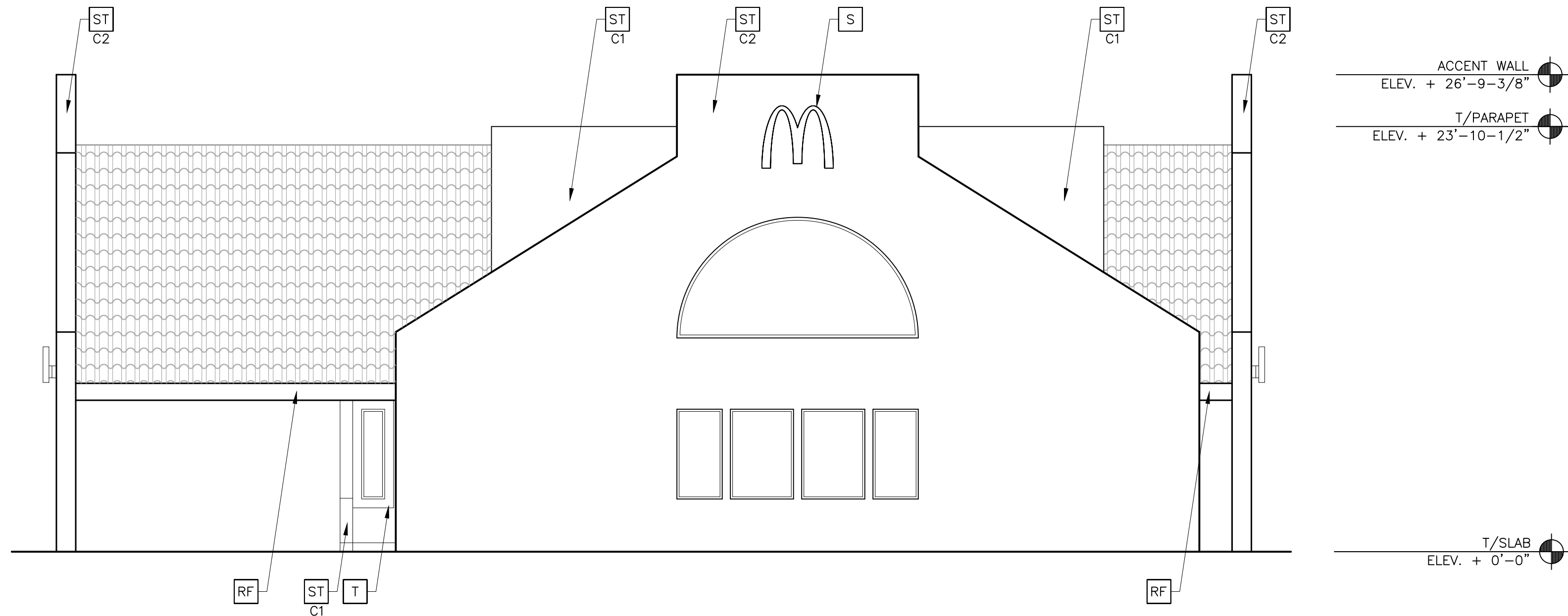
©2012 McDonald's USA, LLC

These drawings and specifications are the confidential and proprietary property of McDonald's USA, LLC and shall not be copied, reproduced, or used in any manner without written authorization. The contract documents were prepared for use on this specific site in conjunction with its issue date and are not to be used for any other project. Reproduction of these drawings for reference or example on another project requires the services of properly licensed architects and engineers. Reproduction of the contract documents for reuse on another project is not authorized.





1
A2.0
EXISTING FRONT ELEVATION (WEST)
3/16" = 1'-0"



2
A2.0
PROPOSED FRONT ELEVATION (WEST)
3/16" = 1'-0"

KEY NOTES: (SEE ELEVATION KEYNOTES FOR COLOR SCHEME)

- CJ** CONTROL JOINT
X — TYPE:
1 = MATCHING SPACING OF EXISTING EIFS BELOW OR
SPACE PER MFR'S RECOMMENDATIONS
- CS** OUTSIDE CORNER STRIPS
RONDEC R0100TSDA BY SCHLUTER SYSTEMS
ALUMINUM; HEIGHT:10MM COLOR: DARK ANTHRACITE
COMMERCIALSUPPORT@SCHLUTER.COM, (800) 267-0817

- D** HOLLOW METAL DOOR — PAINT TO MATCH COLOR
OF SURROUNDING MATERIAL
- GR** GUARDRAIL
- L** LIGHT FIXTURE — SEE ELECTRICAL
- XX — TYPE:
L1 = UP AND DOWN SCOSCE
L2 = DOWN ONLY SCOSCE
L3 = RECESSED DOWN FIXTURE
COLOR:
C1 = SILVER
C2 = WHITE

- MJ** MOVEMENT JOINT
DILEX BMB1000S BY SCHLUTER SYSTEMS
COLOR: BLACK
- MS** EXISTING MECHANICAL SCREEN
- PB** PIPE BOLLARD — PAINTED YELLOW

- PT** PASS-THRU COIN COLLECTOR — OPTIONAL (RMHC)
- RF** ROOF FASCIA COLOR: ALEXANDRIA BEIGE HC-77
- RL** ROOF LADDER, PAINT TO MATCH SURROUNDING MATERIAL
- RO** ROOF DRAIN OVERFLOW PIPE PAINT TO MATCH
SURROUNDING MATERIAL
- S** McDONALD'S SIGNAGE BY OTHERS — UNDER SEPARATE
PERMIT. SEE SIGNAGE SUPPORT NOTE ON THIS SHEET.
- ST** STUCCO EXTERIOR FINISH
XX — TYPE: (COLOR—SEE COLOR LEGEND)
C1 = BLEEKER BEIGE HC-80
C2 = ALEXANDRIA BEIGE HC-77
- T** EXISTING WOODEN TRIM
COLOR: WHITE SAND OC-77

- W1** NEW STOREFRONT AND GLAZING
1 — 1 = NEW STOREFRONT AND GLAZING —
SEE ASSEMBLY NOTES
2 = EXISTING WINDOW TO REMAIN

- W2** NEW DRIVE-THRU WINDOW BY READY ACCESS
MODEL: 600 SERIES, 36" SERVICE HEIGHT WITH TRANSOM, MANUAL
OPEN; ELECTRONIC RELEASE
SLIDE DIRECTION: RL = RIGHT TO LEFT
LR = LEFT TO RIGHT
COLOR:
C1 = MATCH EXIST. IN FIELD
C2 = RAL 7022

SHEET NO.	DRAWING TITLE: EXTERIOR ELEVATION	BRAND REVIEW — PLANNING — PERMIT 01-11-2019 — CONSTRUCTION —	PROJECT ADDRESS: 50 MISSION CIRCLE SANTA ROSA, CA 95409	STATE SITE CODE: 004-1324	DRAWN BY: SG	PREPARED FOR:  McDonald's USA, LLC ©2012 McDonald's USA, LLC These drawings and specifications are the confidential and proprietary property of McDonald's USA, LLC and shall not be copied or reproduced without written authorization. The drawings are for use on this specific site in conjunction with its issue date and are not suitable for use on a different site or at a later time. Use of the drawings for any other project without the written permission of the services of properly licensed architects and engineers. Reproduction of the contract documents for reuse on another project is not authorized.					 Stantec Stantec Architecture Inc. Tel. 707.765.1660 1383 N. McDowell Blvd. Fax. 707.765.9908 Petaluma, CA U.S.A. 94954 www.stantec.com																																																																																																																																																																																																																																																																																																																																																																																																																																																																																																																																																																																																																																																																																																																																																																																																																																																																																																																																																																																																																																																																																																																																																																																																																																																																																																			

K:\STD\STANDARD\PRELIM\MRP GUIDELINES\2016 CORE 16 MRP CRITERIA (NOV 2016)\CORE 16 MRP NON PP (CRITERIA)\A2-0_A2-1.DWG 11-30-2016 13:53

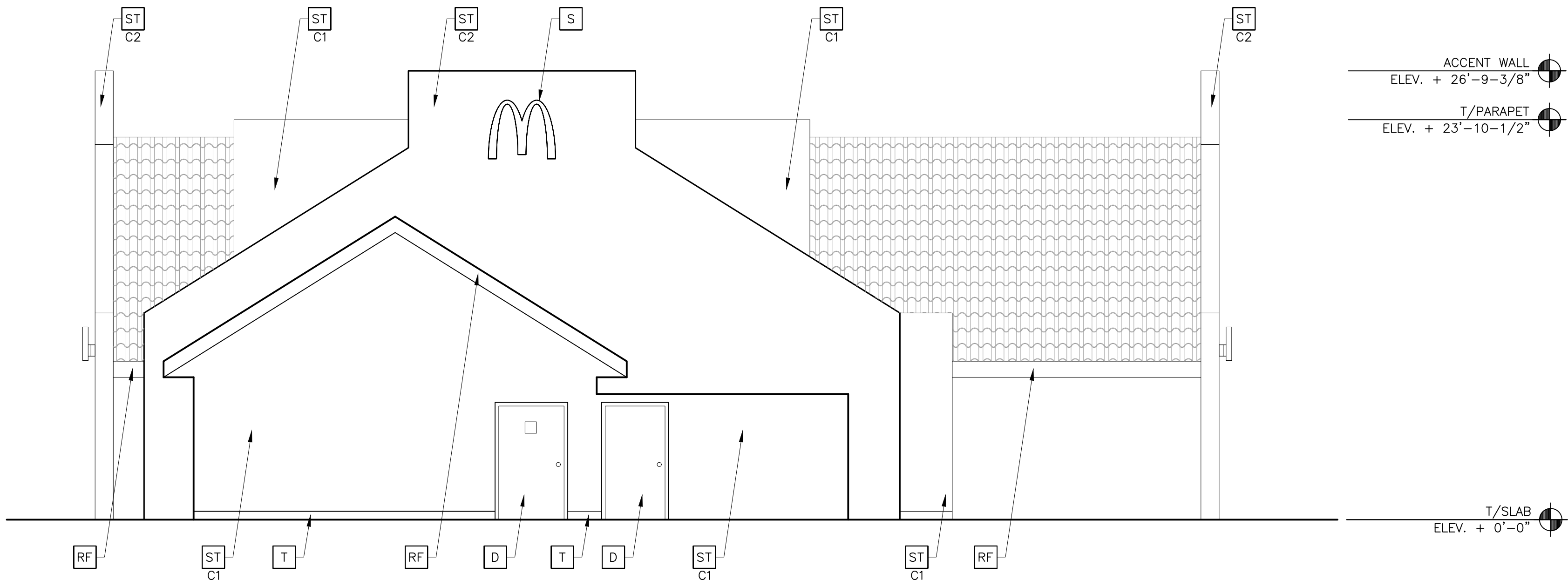
(E) WALL
ELEV. + 26'-9-3/8"

T/PARAPET
ELEV. + 22'-10"

(E) WALL
ELEV. + 26'-9-3/8"

T/SLAB
ELEV. + 0'-0"

1
A2.3
EXISTING REAR ELEVATION (EAST)
3/16" = 1'-0"

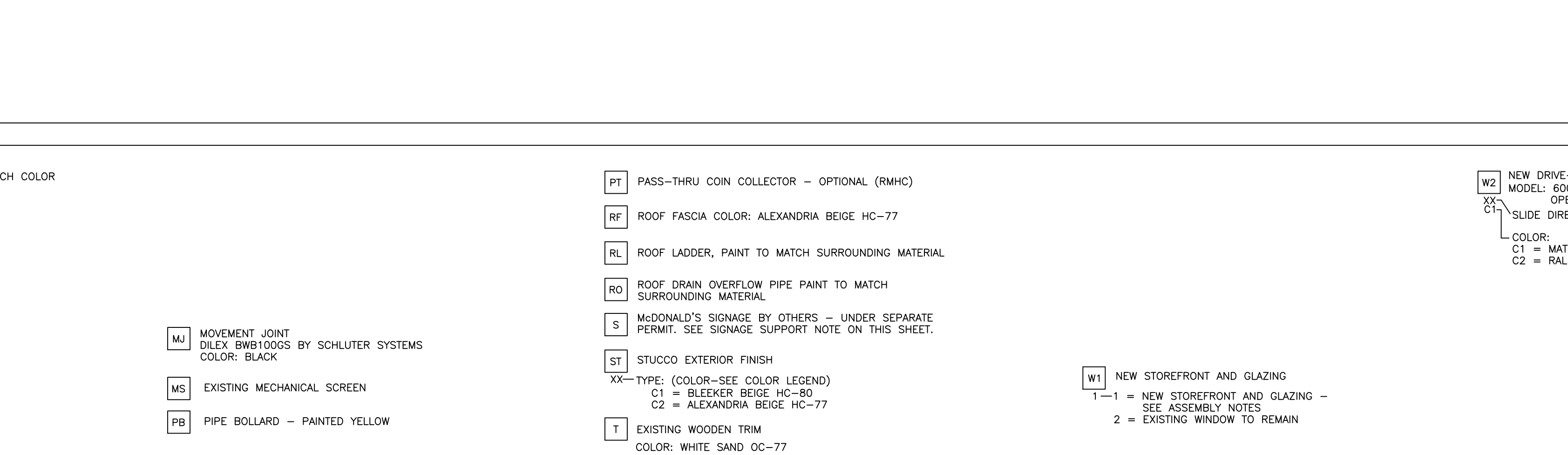


ACCENT WALL
ELEV. + 26'-9-3/8"

T/PARAPET
ELEV. + 23'-10-1/2"

T/SLAB
ELEV. + 0'-0"

2
A2.3
PROPOSED REAR ELEVATION (EAST)
3/16" = 1'-0"



ACCENT WALL
ELEV. + 26'-9-3/8"

T/PARAPET
ELEV. + 23'-10-1/2"

T/SLAB
ELEV. + 0'-0"

KEY NOTES: (SEE ELEVATION KEYNOTES FOR COLOR SCHEME)

CJ CONTROL JOINT
X - TYPE:
1 = MATCHING SPACING OF EXISTING EIFS BELOW OR
SPACE PER MFR'S RECOMMENDATIONS

CS OUTSIDE CORNER STRIPS
RONDEC R0100TSDA BY SCHLUTER SYSTEMS
ALUMINUM; HEIGHT:10MM COLOR: DARK ANTHRACITE
COMMERCIALSUPPORT@SCHLUTER.COM, (800) 267-0817

D HOLLOW METAL DOOR - PAINT TO MATCH COLOR
OF SURROUNDING MATERIAL

GR GUARDRAIL

L LIGHT FIXTURE - SEE ELECTRICAL

XX - TYPE:
L1 = UP AND DOWN SCOFF
L2 = DOWN ONLY SCOFF
L3 = RECESSED DOWN FIXTURE

COLOR:
C1 = SILVER
C2 = WHITE

MJ MOVEMENT JOINT
DILEX BWB1000S BY SCHLUTER SYSTEMS
COLOR: BLACK

MS EXISTING MECHANICAL SCREEN

PB PIPE BOLLARD - PAINTED YELLOW

PT PASS-THRU COIN COLLECTOR - OPTIONAL (RMHC)

RF ROOF FASCIA COLOR: ALEXANDRIA BEIGE HC-77

RL ROOF LADDER, PAINT TO MATCH SURROUNDING MATERIAL

RO ROOF DRAIN OVERFLOW PIPE PAINT TO MATCH
SURROUNDING MATERIAL

S McDONALD'S SIGNAGE BY OTHERS - UNDER SEPARATE
PERMIT. SEE SIGNAGE SUPPORT NOTE ON THIS SHEET.

ST STUCCO EXTERIOR FINISH

XX - TYPE: (COLOR-SEE COLOR LEGEND)
C1 = BLEEKER BEIGE HC-80
C2 = ALEXANDRIA BEIGE HC-77

T EXISTING WOODEN TRIM
COLOR: WHITE SAND OC-77

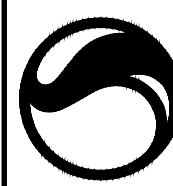
W1 NEW STOREFRONT AND GLAZING
1-1 = NEW STOREFRONT AND GLAZING -
SEE ASSEMBLY NOTES
2 = EXISTING WINDOW TO REMAIN

W2 NEW DRIVE-THRU WINDOW BY READY ACCESS
MODEL: 600 SERIES, 36" SERVICE HEIGHT WITH TRANSOM, MANUAL
OPEN; ELECTRONIC RELEASE

XX - C1 SLIDE DIRECTION: RL = RIGHT TO LEFT
LR = LEFT TO RIGHT

COLOR:
C1 = MATCH EXIST. IN FIELD
C2 = RAL 7022

SHEET NO.	DRAWING TITLE: EXTERIOR ELEVATION	BRAND REVIEW — PLANNING — PERMIT 01-11-2019 BID — CONSTRUCTION — SG	PROJECT ADDRESS: 50 MISSION CIRCLE SANTA ROSA, CA 95409	STATE SITE CODE: 004-1324	DRAWN BY: 2014047031	REV	DATE	CITY COMMENTS	PERMIT SUBMITTAL	BY
A2.3										
PLOT SCALE: 1"=1' MODA-BOR										



Stantec Architecture Inc.
1383 N. McDowell Blvd.
Petaluma, CA U.S.A. 94954

Tel. 707.765.1660
Fax. 707.765.9908
www.stantec.com

PREPARED FOR:
McDonald's USA, LLC

©2012 McDonald's USA, LLC

These drawings and specifications are the confidential and proprietary property of McDonald's USA, LLC and shall not be copied or reproduced without the written permission of McDonald's USA, LLC. This document is for use on this specific site in conjunction with its issue date and is not suitable for use on a different site or at a later time. Use of the services of properly licensed architects and engineers. Reproduction of the contract documents for reuse on another project is not authorized.



Front Elevation

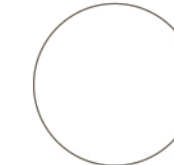
Color Legend:



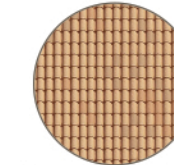
Stucco - Benjamin Moore
#HC-80 "Bleeker Beige"



Stucco - Benjamin Moore
#HC-77 "Alexandria Beige"



Trim - Benjamin Moore
#OC-77 "White Sand"



Existing Roof - Mission Tiles



Non-Drive-Thru Elevation



McDonald's 004-1324
50 Mission Circle
Santa Rosa, CA 95409

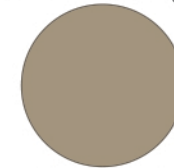


Drive-Thru Elevation

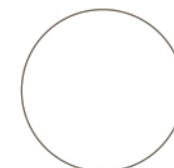
Color Legend:



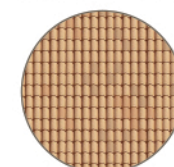
Stucco - Benjamin Moore
#HC-80 "Bleeker Beige"



Stucco - Benjamin Moore
#HC-77 "Alexandria Beige"



Trim - Benjamin Moore
#OC-10 "White Sand"



Existing Roof - Mission Tiles



Rear Elevation



McDonald's 004-1324
50 Mission Circle
Santa Rosa, CA 9509