

CORNERSTONE

— Santa Rosa - 34 6th Street

09 - 16 - 2020

SCB

34 6TH STREET PROJECT

Introduction to Cornerstone
Introduction to the Team
Building + Site Design
Questions

"Cornerstone exists to elevate the North Bay community with a focus on innovative and sustainable economic development. Our goals are to work collaboratively with other community leaders, sustain and grow the workforce and attract new clients to the North Bay."



Jennifer Burrow



Pauline Block



Daniella Zingarelli



Mike Wagner



Jen Picard

03

THE OFFICE TEAM





BARN 5400



DEVELOPMENT TEAM

Ben Wrigley, Solomon Cordwell Buenz

Peter Stanley, ArchiLOGIX

Rick Carlile, BKF Engineers

Christine Talbot, Quadriga Landscape Architecture & Planning

SITE ANALYSIS MAP



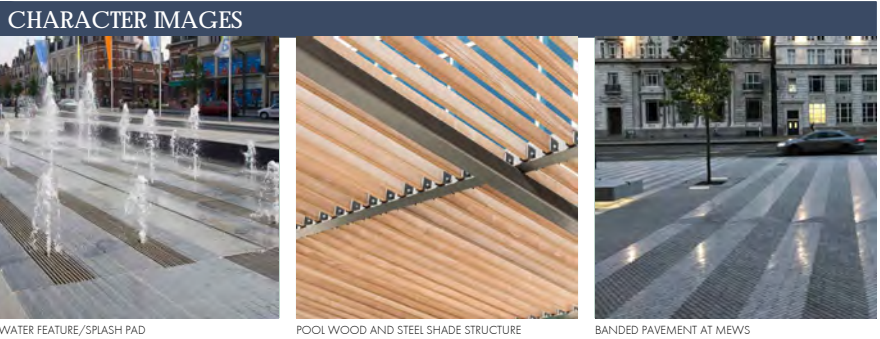
- New Internal Roadway
- SMART Station
- Potential Trolley Route
- High Freq. Bus Route
- Existing Bike Path
- Planned Bike Path
- Pedestrian Improvement
- Streetscape Improvement
- Sun Path & Solar Angle
- Prevailing Wind
- View Corridors





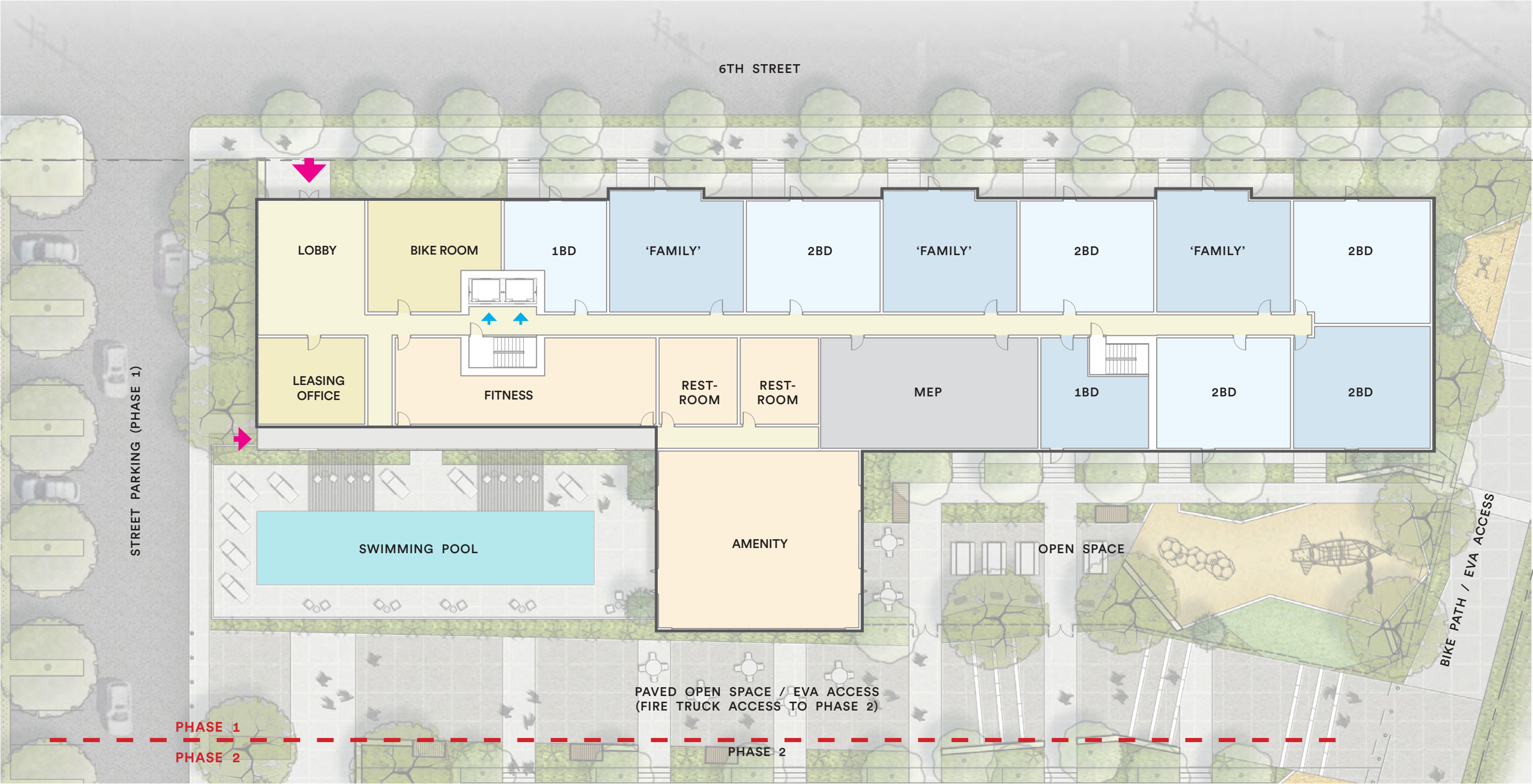


- LEGEND**
- (A) RAISED STOOP - RESIDENTIAL CONDITION
 - (B) SPLASH PADS - WATER FEATURE
 - (C) LAWN AREA FOR GATHERINGS AND PLAY
 - (D) SIDEWALK
 - (E) SHADE STRUCTURE
 - (F) DECK PLATFORMS FOR SEATING
 - (G) SEAT WALL
 - (H) PICNIC AND BBQ AREA
 - (I) PLAY STRUCTURE AND FALL SURFACING
 - (J) EXERCISE EQUIPMENT AND FALL SURFACING
 - (K) POOL DECKING
 - (L) REMOVABLE BOLLARDS
 - (M) MOVABLE FURNITURE
 - (N) CONNECTION TO PEDESTRIAN/BIKE PATHWAY
 - (O) 48" FENCING WITH GATES
 - (P) 72" POOL FENCING WITH GATES
 - (Q) TEMPORARY FENCING
 - (R) TEMPORARY PARKING - AC OR GRAVEL PAVEMENT



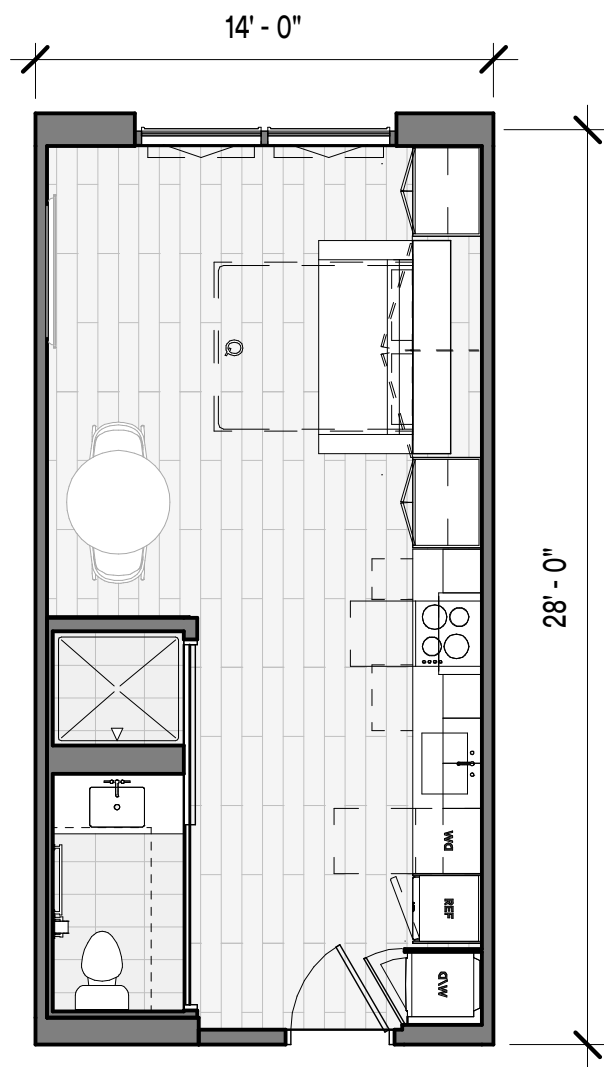
- SITE LEGEND**
- PEDESTRIAN PAVEMENT ONE - INTEGRAL COLOR CONCRETE
 - PEDESTRIAN PAVEMENT TWO - INTEGRAL COLOR CONCRETE OR UNIT PAVERS
 - PEDESTRIAN PAVEMENT THREE - TRAIL
 - VEHICULAR ASPHALT
 - PLAY/FALL SURFACING
 - ROOFTOP LANDSCAPED TERRACE
 - SHADE STRUCTURE

- LANDSCAPE LEGEND**
- STORM WATER PLANTING
 - PLANTING AREA
 - LAWN AREA
 - HYDROSEED AREA WITH NATIVE GRASSES AND WILDFLOWERS
 - LARGE SPECIMEN TREE
 - LARGE SHADE TREE
 - MEDIUM SIZED TREE
 - SMALL ACCENT TREE

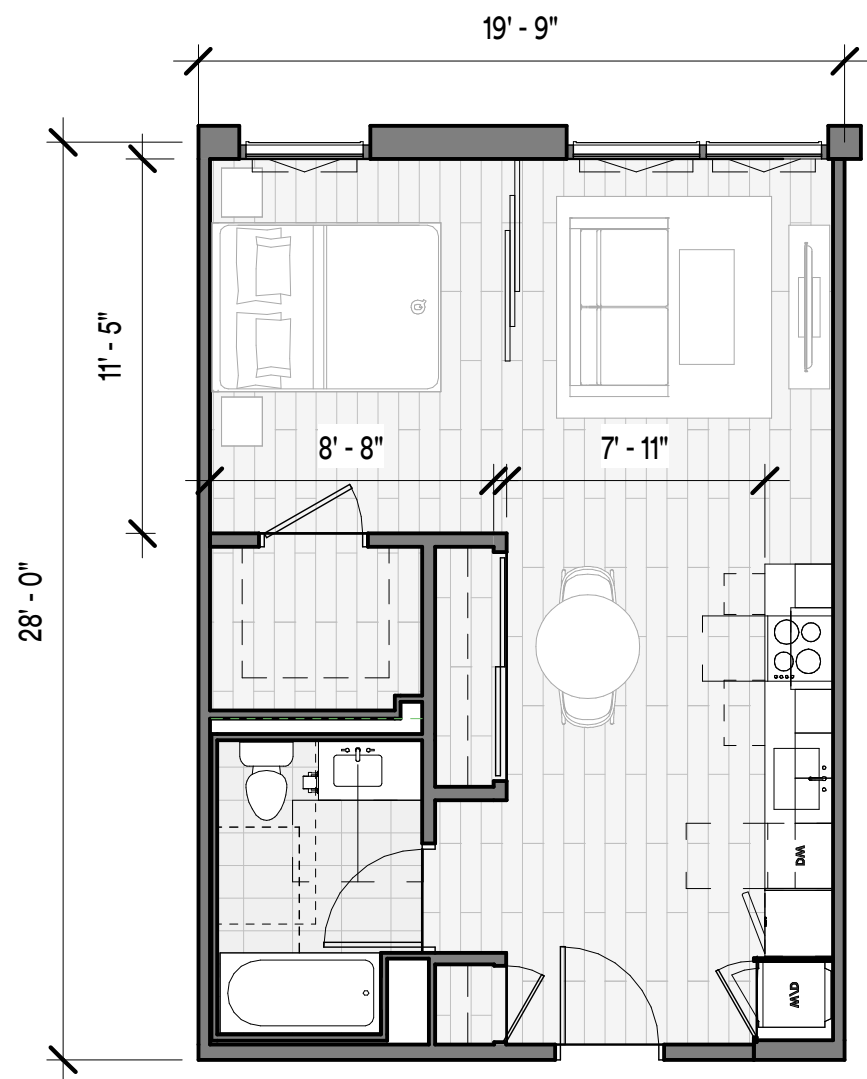




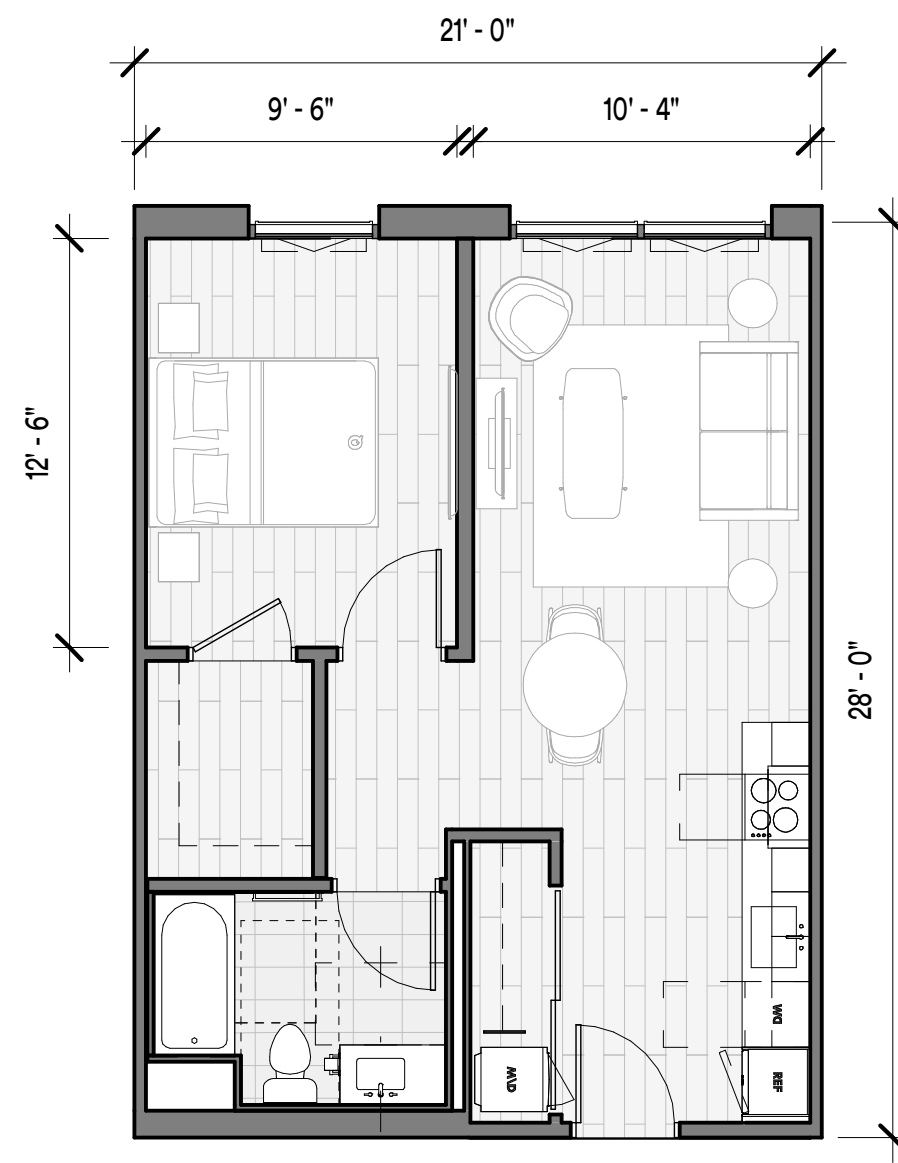
PROTO-TYPICAL UNITS



STUDIO
380 SQFT

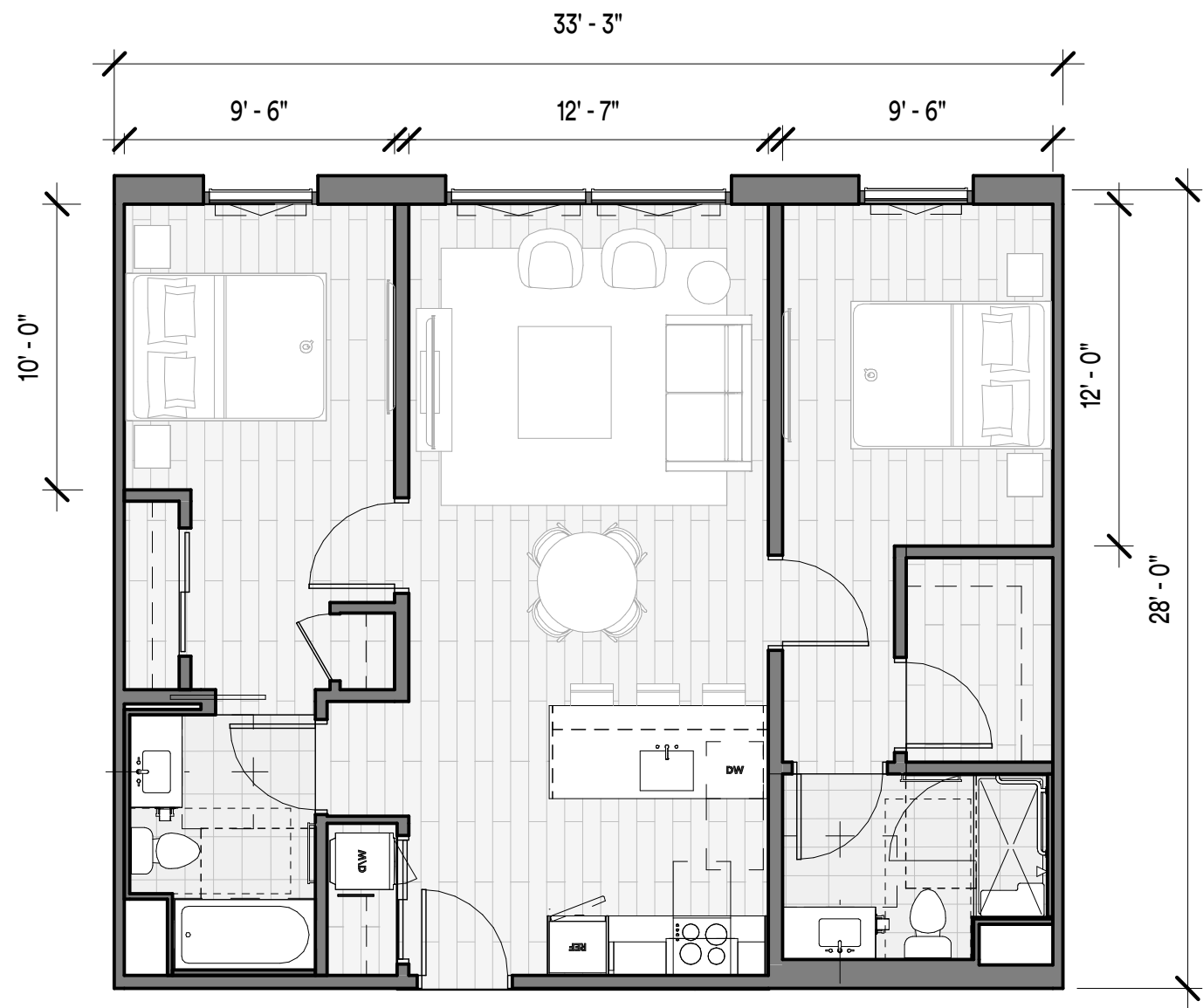


URBAN 1 BEDROOM
550 SQFT

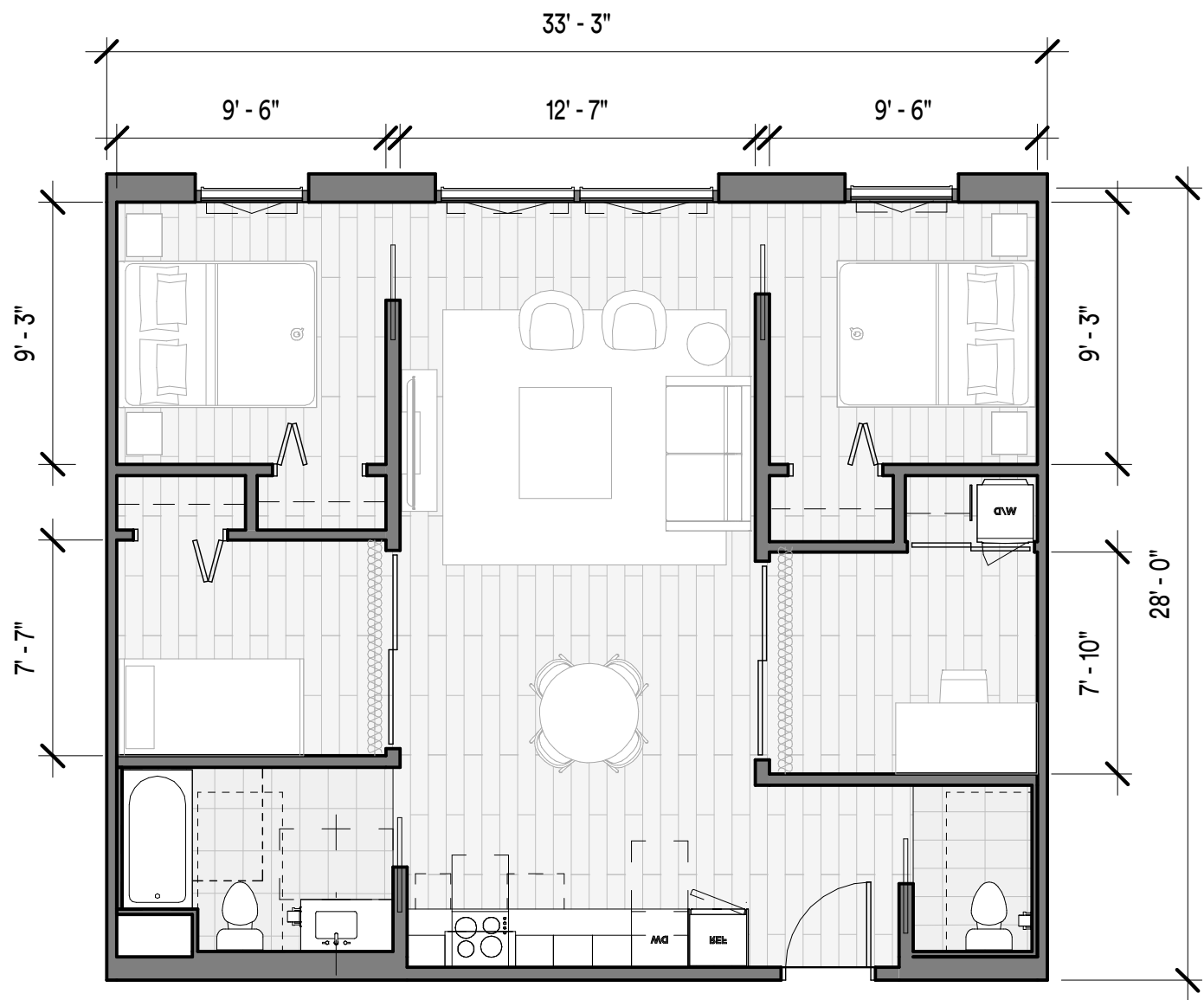


1 BEDROOM
590 SQFT

PROTO-TYPICAL UNITS

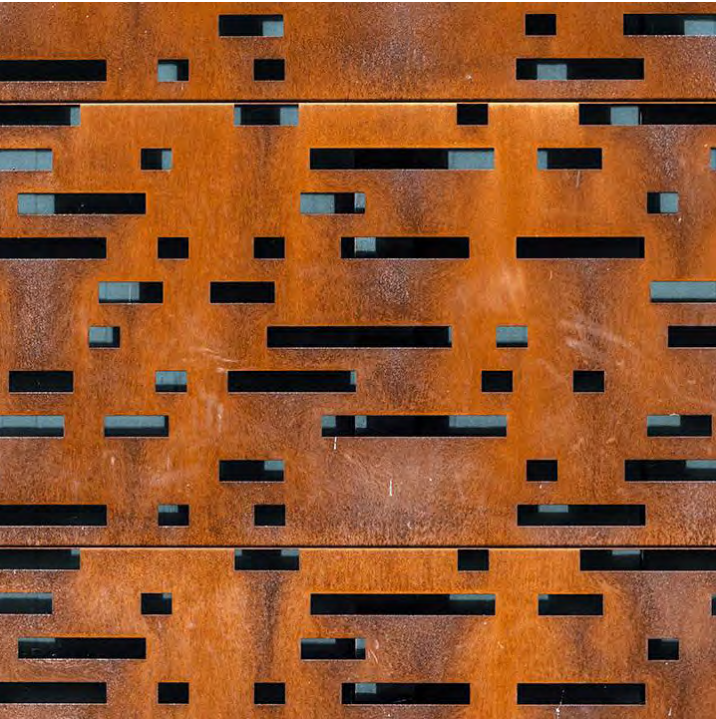


2 BEDROOM
925 SQFT



'FAMILY'
925 SQFT

EXTERNAL MATERIALS PALETTE





PERSPECTIVE ON EAST END





PERSPECTIVE AT NORTH STOOPS