

ABBREVIATIONS

AB	AGGREGATE BASE
AC	ASPHALT CONCRETE
AE	APPROVED EQUAL
AGG	AGGREGATE
APPROX	APPROXIMATE
B	BEGIN HORIZONTAL CURVE
BLDG	BUILDING
BM	BENCHMARK
BO	BLOWOFF
BSL	BUILDING SETBACK LINE
BVC	BEGIN VERTICAL CURVE
CB	CATCH BASIN
C&G	CURB AND GUTTER
CIPP	CAST-IN-PLACE-PIPE
CL	CENTERLINE
CL	CLASS
CMP	CORRUGATED METAL PIPE
CO	CLEANOUT
CONC	CONCRETE
CNP	CORRUGATED PLASTIC PIPE
CR	CURB RETURN
CY	CUBIC YARD
DDCV	DOUBLE DETECTOR CHECK VALVE
DI	DROP INLET
DIA	DIAMETER
DIP	DUCTILE IRON PIPE
DWY	DRIVEWAY
DWG	DRAWING
EC	END HORIZONTAL CURVE
EG	EXISTING GROUND
EI	EXPANSION INDEX
ELEV	ELEVATION
ELEC	ELECTRICAL
EDGE	EDGE OF PAVEMENT
ESMT	EASEMENT
EVC	END VERTICAL CURVE
EX	EXISTING
FC	FACE OF CURB
F	FIELD DRAIN
FES	FLARED END SECTION
FF	FINISHED FLOOR
FG	FINISHED GRADE
FH	FIRE HYDRANT
F	FLOWLINE
FOOT	FOOT
GALV	GALVANIZED
GB	GRADE BREAK
GV	GATE VALVE
HDPE	HIGH DENSITY POLYETHYLENE
HDWL	HEADWALL
HGR	HYDRAULIC GRADE LINE
HORIZ	HORIZONTAL
INV	INVERT
INF	INFLOW AND INFILTRATION
JP	JOINT POLE
JS	JUNCTION STRUCTURE
JT	JOINT TRENCH
LAT	LATERAL
LENGTH	LENGTH
LF	LINEAR FEET
LG	LIP OF GUTTER
LT	LEFT
MAX	MAXIMUM
MB	MAILBOX
MIN	MINIMUM
MISC	MISCELLANEOUS
MH	MANHOLE
MON	MONUMENT
N/A	NOT APPLICABLE
NTS	NOT IN CONTRACT
OC	NOT TO SCALE
OD	ON CENTER
OD	OUTSIDE DIAMETER
PADE	PRIVATE ACCESS & DRAINAGE EASEMENT
PAUDE	PRIVATE ACCESS, UTILITY & DRAINAGE EASEMENT
PCC	PORCELANE COMPOUND CURVE
PG	PAD GRADE
PIV	POST INDICATOR VALUE
P	PROPERTY LINE
P	POINT ON CURVE
PP	POWER POLE
PRC	POINT OF REVERSE CURVE
PSD	PRIVATE SD
PSDE	PRIVATE SD EASEMENT
P	POINT
PUE	PUBLIC UTILITY EASEMENT
PVC	POLYVINYL CHLORIDE
PVI	POINT OF VERTICAL INTERSECTION
PWT	PAVEMENT
PVT	PRIVATE
R	RADIUS
R	RELATIVE COMPACTION
RCB	REINFORCED CONCRETE BOX
RCF	REINFORCED CONCRETE PIPE
REF	REFERENCE
RPBP	REDUCED PRESSURE BACK FLOW PREVENTER
RT	RIGHT
R/W	RIGHT OF WAY
S	SLOPE OR SEWER
SDE	STORM DRAIN EASEMENT
SE	PUBLIC SEWER EASEMENT
SD	PUBLIC STORM DRAIN
SDMH	STORM DRAIN MANHOLE
SDTU	STORM DRAIN TREATMENT UNIT
SDV	STORM DRAIN VAULT
SF	SQUARE FEET
SO	SUBGRADE ELEVATION
SL	STREET LIGHT
SPEC	SPECIFICATION
STD	STANDARD
STA	STATION
S/W	SIDEWALK
SWE	SIDEWALK EASEMENT
SY	SQUARE YARD
TAN	TANGENT
TB	TOP OF BANK OR BOX
TC	TOP OF CURB
TEL	TELEVISION
TG	TOP OF GRATE
TOE	TOE OF SLOPE
TW	TOP OF WALL
TYP	TYPICAL
VERT	VERTICAL
VC	VERTICAL CURVE
W	WATER
WE	PUBLIC WATER EASEMENT
WM	WATER METER
WS	WATER SERVICE
WV	WATER VALVE
Δ	DELTA
∠	ANGLE POINT

9/21/2020 9:52:14 AM Rev. C:\Users\j\OneDrive\Documents\20190200\Drawings\9/21/2020-MS.dwg
D:\rev files: 18020-1B_1

GENERAL NOTES

- ALL MATERIALS, WORKMANSHIP AND CONSTRUCTION SHALL CONFORM TO THE CURRENT CITY OF SANTA ROSA DESIGN AND CONSTRUCTION STANDARDS AND CONSTRUCTION SPECIFICATIONS FOR PUBLIC IMPROVEMENTS
- CONTRACTOR SHALL OBTAIN AND PAY FOR ALL CONSTRUCTION PERMITS REQUIRED BY THE CITY OF SANTA ROSA (SUCH AS ENCROACHMENT, GRADING, BUILDING, DEMOLITION ETC.) PRIOR TO COMMENCEMENT OF WORK.
- AN ENCROACHMENT PERMIT MUST BE OBTAINED FROM THE DEPARTMENT OF PUBLIC WORKS PRIOR TO BEGINNING ANY WORK WITHIN THE PUBLIC RIGHT-OF-WAY. A TRAFFIC CONTROL PLAN MUST BE SUBMITTED FOR APPROVAL PRIOR TO BEGINNING ANY WORK WITHIN THE PUBLIC RIGHT-OF-WAY.
- CONTRACTOR SHALL SECURE A TRENCH PERMIT FROM THE CALIFORNIA DIVISION OF INDUSTRIAL SAFETY PRIOR TO EXCAVATION OF ANY TRENCH OVER FIVE FEET IN DEPTH.
- IF CONTAMINATED MATERIAL IS ENCOUNTERED DURING CONSTRUCTION, WORK MUST STOP UNTIL A WORK PLAN HAS BEEN APPROVED IN WRITING BY THE CITY FIRE DEPARTMENT AND THE STATE REGIONAL WATER QUALITY CONTROL BOARD (NCRWQBC). HAZARDOUS MATERIAL SHALL BE REMOVED AND DISPOSED OF ACCORDING TO THE REQUIREMENTS OF THE CITY'S FIRE DEPARTMENT. THE APPLICANT IS REQUIRED TO DEMONSTRATE COMPLIANCE WITH STATE AND LOCAL CODES FOR REMOVAL OF ASBESTOS CONTAINING MATERIALS DURING DEMOLITION OF THE STRUCTURES ON THE PROJECT SITE.
- ALL TRENCH SPOILS SHALL BE REMOVED AS THEY ARE GENERATED OR DISPOSED OF ON SITE AS REQUIRED BY THE GRADING PERMIT. EXCESS/UNSUITABLE MATERIAL, DISPOSED OF OFFSITE AT AN APPROVED LOCATION BY ENGINEERING DEVELOPMENT SERVICES. CONTAIN AND SECURELY PROTECT STOCKPILED TRENCH BACKFILL AND WASTE MATERIAL FROM WIND AND RAIN AT ALL TIMES UNLESS ACTIVELY BEING USED. DO NOT BLOCK STORM WATER FLOWS.
- ALL UNDERGROUND IMPROVEMENTS INCLUDING SEWER LINES, WATER LINES, STORM DRAINS, PUBLIC UTILITY FACILITIES, AND SERVICES SHALL BE INSTALLED, TESTED, AND ACCEPTED BY THE UTILITIES AND PUBLIC WORKS DEPARTMENTS PRIOR TO PAVING. TRENCH PAVING FOR ALL UTILITIES SHALL BE COORDINATED AND INSTALLED AT THE SAME TIME.
- CONSTRUCTION CONTRACTOR AGREES THAT IN ACCORDANCE WITH GENERALLY ACCEPTED CONSTRUCTION PRACTICES, CONSTRUCTION CONTRACTOR WILL BE REQUIRED TO ASSUME SOLE AND COMPLETE RESPONSIBILITY FOR JOB SITE CONDITIONS DURING THE COURSE OF CONSTRUCTION OF THE PROJECT, INCLUDING SAFETY OF ALL PERSONS AND PROPERTY. THIS REQUIREMENT SHALL BE MADE TO APPLY CONTINUOUSLY AND NOT BE LIMITED TO NORMAL WORKING HOURS. THE CONSTRUCTION CONTRACTOR FURTHER AGREES TO HOLD HARMLESS, INDEMNIFY AND DEFEND THE DESIGN PROFESSIONAL, THE OWNER AND THEIR CONSULTANTS, AND THE CITY OF SANTA ROSA, AND EACH OF THEIR OFFICERS, EMPLOYEES, AND AGENTS FROM ANY AND ALL LIABILITY, REAL OR ALLEGED, IN CONNECTION WITH THE PERFORMANCE OF WORK ON THIS PROJECT, EXCEPTING LIABILITY ARISING FROM THE SOLE NEGLIGENCE OF THE DESIGN PROFESSIONAL.
- THE LOCATIONS OF UNDERGROUND OBSTRUCTIONS SHOWN ON THE DRAWINGS ARE APPROXIMATE ONLY AND SHOULD NOT BE TAKEN AS FINAL. AT ALL TIMES, THE CONTRACTOR SHALL EXPOSE ALL EXISTING UTILITIES INCLUDING SEWERS AND STORM DRAINS PRIOR TO ANY TRENCHING TO ALLOW THE ENGINEER TO VERIFY THE GRADE AND ALIGNMENT OF THE UTILITIES AND TO VERIFY DESIGN ASSUMPTIONS AND EXACT FIELD LOCATION. EXISTING UTILITIES MAY REQUIRE RELOCATION AND/OR PROPOSED IMPROVEMENTS MAY REQUIRE GRADE OR ALIGNMENT REVISION DUE TO FIELD CONDITIONS.
- UNDERGROUND FACILITIES NOT SHOWN ON THESE DRAWINGS SUCH AS PG&E, TELEPHONE, TV, IRRIGATION, ETC. SHALL BE COORDINATED AND CONSTRUCTED PRIOR TO PLACEMENT OF BASE ROCK AND PAVING.
- CONTRACTOR IS RESPONSIBLE FOR PRESERVATION AND/OR PERPETUATION OF ALL EXISTING SURVEY MONUMENTS (CURB TAGS, IRON PIPES, CENTERLINE WELL DISKS, ETC.). IF THE CONTRACTOR SUSPECTS THAT WORK WILL BE CONDUCTED IN AN AREA WHICH MAY RESULT IN THE DISTURBANCE OF SURVEY MONUMENTS, THE CONTRACTOR SHALL RETAIN THE SERVICES OF A LICENSED PROFESSIONAL AUTHORIZED TO PRACTICE LAND SURVEYING TO LOCATE SAID MONUMENTS PRIOR TO DISTURBANCE. RE-ESTABLISH MONUMENTS WHICH HAVE BEEN DISTURBED AS A RESULT OF CONSTRUCTION AND FILE THE APPROPRIATE DOCUMENTATION WITH THE COUNTY ONCE THE MONUMENTS ARE RESET. CONTRACTOR SHALL PROVIDE A MINIMUM OF 10 (TEN) WORKING DAYS NOTICE TO THE ENGINEER/SURVEYOR PRIOR TO DISTURBANCE OR REMOVAL OF EXISTING MONUMENTS. CONTRACTOR SHALL PROVIDE THE CITY WITH A MONUMENT CERTIFICATION LETTER FROM THE ENGINEER/SURVEYOR STATING THAT THE EXISTING MONUMENTS HAVE BEEN IDENTIFIED AND LOCATED PRIOR TO REMOVAL.
- THE CONTRACTOR SHALL BE RESPONSIBLE FOR REPAIRING DAMAGE OR DETERIORATION OCCURRING TO EXISTING PUBLIC IMPROVEMENTS AS A DIRECT RESULT OF CONSTRUCTION ACTIVITY (GRADING, ROAD CONSTRUCTION, UTILITY INSTALLATION, ETC.). REPAIR MAY REQUIRE PATCHING, SEALING OR OVERLAYING AFFECTED AREAS AS APPROPRIATE TO RETURN THE ROADS TO AT LEAST AS GOOD A CONDITION AS THEY WERE PRIOR TO CONSTRUCTION. IF THE CONTRACTOR DOES NOT ACT IN A TIMELY MANNER, THE CITY MAY, AT ITS DISCRETION PERFORM THE CORRECTION AND CHARGE THE CONTRACTOR FOR ALL COSTS AND OVERHEAD INCURRED.
- RECORD DRAWINGS SHALL BE PROVIDED TO THE CITY UPON COMPLETION OF PROJECT AND PRIOR TO FINAL ACCEPTANCE.
- THE CONTRACTOR SHALL KEEP THE WORK SITE, STAGING AREAS AND OTHER AREAS USED BY IT IN A NEAT AND CLEAN CONDITION, AND FREE FROM ANY ACCUMULATION OF TRASH. THE CONTRACTOR SHALL DISPOSE OF ALL TRASH, RUBBISH AND WASTE MATERIALS OF ANY KIND GENERATED BY THE CONTRACTOR, SUBCONTRACTOR OR ANY COMPANY HIRED BY THE CONTRACTOR ON A DAILY BASIS. THE CONTRACTOR SHALL ALSO KEEP HALL ROADS FREE FROM DIRT, RUBBISH, AND UNNECESSARY OBSTRUCTIONS RESULTING FROM SITE OPERATION. DISPOSAL OF ALL TRASH, RUBBISH AND DEBRIS MATERIALS SHALL BE IN A COVERED WASTE RECEPTACLE OR Hauled OFF SITE, IN ACCORDANCE WITH LOCAL CODES AND ORDINANCES GOVERNING LOCATIONS AND METHODS OF DISPOSAL, AND IN CONFORMANCE WITH ALL APPLICABLE LAWS AND REGULATIONS. WASTE RECEPTACLES SHALL BE COVERED AT THE END OF EVERY DAY AND DURING RAIN EVENTS.
- ENSURE THE CONTAINMENT OF SANITATION FACILITIES (E.G., PORTABLE TOILETS) TO PREVENT DISCHARGES OF POLLUTANTS TO THE STORM WATER DRAINAGE SYSTEM, ROADS OR RECEIVING WATERS. SANITATION FACILITIES MUST BE MAINTAINED PERIODICALLY BY A LICENSED SERVICE COMPANY TO KEEP THEM IN GOOD WORKING ORDER AND PREVENT OVERFLOWS. PORTABLE TOILETS ARE REQUIRED TO HAVE SECONDARY CONTAINMENT.
- EQUIPMENT AND MATERIALS NECESSARY FOR CONTROL OF SPILLS SHALL BE AVAILABLE ON SITE AT ALL TIMES. SPILLS AND LEAKS SHALL BE STOPPED AND THE MATERIAL CLEANED UP IMMEDIATELY AND DISPOSED OF PROPERLY. USE PROPER BEST MANAGEMENT PRACTICES (BMPs) TO PREVENT OIL, GREASE, OR FUEL FROM LEAKING ON THE GROUND, INTO THE STORM DRAINS OR SURFACE WATERS.

UTILITY GENERAL NOTES

- THE USE OF CONTROLLED DENSITY BACKFILL (CDF) WITHIN ANY PUBLIC SEWER OR WATER TRENCH IS NOT ALLOWED UNLESS SPECIFICALLY APPROVED BY THE DIRECTOR OF UTILITIES.
- THERE SHALL BE NO UNMETERED CONNECTIONS TO THE CITY OF SANTA ROSA WATER SYSTEM INCLUDING CONNECTIONS BYPASSING THE METER FOR TESTING ON-SITE PLUMBING OR FOR OBTAINING CONSTRUCTION WATER. SUCH CONNECTIONS SHALL BE SEVERED BY THE UTILITY DEPARTMENT AND WILL RESULT IN PENALTIES, INCLUDING PAYMENT OF FINES AND ESTIMATED WATER USAGE FEES.
- CONTRACTOR SHALL CONTACT CITY OF SANTA ROSA PUBLIC WORKS DEPARTMENT FOR FINAL INSPECTION OF ALL SEWER MAINS AND LATERALS. ALL SEWER MAINS AND LATERALS MUST BE CLEANED & MANDRELED PRIOR TO CITY ACCEPTANCE.
- THE CONTRACTOR SHALL HIRE AN INDEPENDENT TELEVISION INSPECTION SERVICE TO PERFORM A CLOSED-CIRCUIT TELEVISION INSPECTION OF ALL NEW CONSTRUCTED SEWERS INCLUDING LATERALS FROM THE MAIN TO THE CLEAN-OUT. THE TELEVISION SHALL BE PERFORMED PER SECTION 71-1.08 OF THE CITY OF SANTA ROSA SEWER SYSTEM CONSTRUCTION STANDARD SPECIFICATIONS.
- ALL SEWER PIPE LENGTHS SHOWN ARE MEASURED HORIZONTALLY TO CENTER OF MANHOLES AND CLEANOUTS.
- THE CONTRACTOR SHALL ACTIVATE THE PROJECT'S WATERLINES THROUGH THE INSTALLATION OF A SIX INCH WATER METER PRIOR TO CONSTRUCTION OR STORAGE OF COMBUSTIBLE MATERIALS. THE SIX INCH METER, APPURTENANCES AND SUITABLE PIPING SHALL BE SUPPLIED AND INSTALLED BY THE CONTRACTOR AS SHOWN ON STD. 860. THE CONTRACTOR SHALL BE RESPONSIBLE FOR HAVING THE 6" METER CERTIFIED. THE CITY UTILITY DEPARTMENT WILL PLACE A PLAQUE ON THE METER AFTER CERTIFICATION OF METER HAS BEEN OBTAINED. THE ABOVE INSTALLATION SHALL REMAIN IN PLACE UNTIL THE WATER SYSTEM IS ACCEPTED BY THE CITY. THE COST OF WATER WILL BE BORNE BY THE OWNER/DEVELOPER/SUBDIVIDER. THE LOCATION OF THE METER AND CHECK VALVES WILL BE DETERMINED BY THE CITY PUBLIC WORKS DEPARTMENT'S CONSTRUCTION SECTION.

- CONTAIN CONCRETE WASHOUT AREAS AND SIMILAR AREAS THAT MAY CONTAIN POLLUTANTS TO PREVENT DISCHARGE INTO THE UNDERLYING SOIL OR ONTO THE SURROUNDING AREAS.
- ESTABLISH AND MAINTAIN EFFECTIVE SITE PERIMETER CONTROLS AND STABILIZE ALL CONSTRUCTION ENTRANCES AND EXITS TO SUFFICIENTLY CONTROL EROSION AND SEDIMENT DISCHARGES AND TRACKED MATERIALS FROM LEAVING THE SITE AT A MINIMUM DAILY AND PRIOR TO ANY RAIN EVENT, THE CONTRACTOR SHALL REMOVE ANY SEDIMENT OR OTHER CONSTRUCTION ACTIVITY RELATED MATERIALS THAT ARE DEPOSITED ON THE ROADS (BY VACUUMING OR SWEEPING).
- PLACE EQUIPMENT OR VEHICLES, WHICH ARE BEING FUELED, MAINTAINED AND STORED, IN A DESIGNATED AREA FITTED WITH APPROPRIATE BMPs.
- AT A MINIMUM, ALL BMPs WILL BE INSPECTED EACH WORKING DAY AND BEFORE ALL RAIN EVENTS. BMPs THAT REQUIRE MAINTENANCE OR REPLACEMENT TO FUNCTION PROPERLY SHALL BE COMPLETED BEFORE THE NEXT FORECASTED RAIN, OR WITHIN THE NEXT 3 WORKING DAYS IF NO RAIN IS PREDICTED. MAINTENANCE INCLUDES REMOVAL OF ACCUMULATED SEDIMENT AND TRASH.
- THE CONTRACTOR SHALL IMPLEMENT AND MAINTAIN ALL APPLICABLE BMPs LISTED IN THE EROSION CONTROL AND/OR STORM WATER POLLUTION PREVENTION PLAN.
- ADA COMPLIANCE: CONSTRUCTION CONTRACTOR MUST COMPLY WITH THE REQUIREMENTS OF THE AMERICAN WITH DISABILITIES ACT (ADA) WHILE WORKING IN THE PUBLIC RIGHT-OF-WAY. IF CONSTRUCTION CONTRACTORS WORK IN THE PUBLIC RIGHT-OF-WAY WILL AFFECT PEDESTRIAN ACCESS, THE CONSTRUCTION CONTRACTOR IS REQUIRED TO PROVIDE A PROPERLY SIGNED ACCESSIBLE ROUTE OR TRAVEL. THIS REQUIREMENT SHALL APPLY CONTINUOUSLY AND NOT BE LIMITED TO NORMAL WORKING HOURS.
- ALL GANG MAIL BOXES SHALL BE INSTALLED BEHIND THE SIDEWALK AND OUT OF THE RIGHT-OF-WAY.
- THE LOCATION OF ALL GANG MAIL BOXES SHALL ENSURE THAT ALL LINES OF SIGHT AND DRAINAGE FLOWS ARE NOT OBSTRUCTED.
- THE LOCATION AND INSTALLATION OF ALL MAIL BOXES SHALL BE COORDINATED BETWEEN THE DEVELOPER AND THE US POSTAL SERVICE.
- MAIL BOXES CONFORMING TO CITY STANDARD 271 MAY BE INSTALLED IN THE RIGHT-OF-WAY.
- THE CHOICE TO USE A CITY STANDARD 271 OR A GANG MAIL BOX WILL BE AT THE DISCRETION OF THE DEVELOPER.
- SECTION 39 ASPHALT CONCRETE OF THE CITY CONSTRUCTION SPECIFICATIONS FOR PUBLIC IMPROVEMENTS SHALL INCLUDE THE FOLLOWING:
LIQUID ANTI-STRIPPING AGENT (LAS) SHALL BE ADDED TO THE ASPHALT BINDER AT A RATE OF 0.5% BY WEIGHT OF ASPHALT BINDER. THE LAS SHALL BE AD-HERE LOD 65-00 OR EQUIVALENT, AND SHALL BE STORED, MEASURED AND BLENDED IN ACCORDANCE WITH THE LAS MANUFACTURER'S RECOMMENDED PRACTICE. THE LAS CAN BE ADDED TO THE ASPHALT BINDER AT THE ASPHALT PLANT OR AT THE REFINERY. WHEN ADDED AT THE ASPHALT PLANT, THE EQUIPMENT SHALL INDICATE AND RECORD THE AMOUNT OF LAS ADDED. IF ADDED AT THE REFINERY, THE SHIPPING TICKET FROM THE REFINERY SHALL CERTIFY THE TYPE AND AMOUNT OF LAS ADDED.
- THE ASPHALT CONCRETE MIXTURE FOR ASPHALT CONCRETE SURFACE AND ASPHALT CONCRETE BASE SHALL CONFORM TO THE FOLLOWING REQUIREMENTS:
MINIMUM TENSILE STRENGTH RATIO (TSR) OF 70, AND A MINIMUM DRY TENSILE STRENGTH OF 65 POUNDS PER SQUARE INCH, BASED ON AASHTO T 283-07.
AT ANY TIME DURING THE FIRST 12 MONTHS FROM THE TIME OF PLACEMENT OF THE ASPHALT CONCRETE, THE SURFACE SHALL BE VISUALLY INSPECTED BY THE CITY. IF SIGNS OF STRIPPING OF BINDER FROM AGGREGATE OR LOSS OF AGGREGATE IS APPARENT, THE CITY SHALL CORE THE ASPHALT CONCRETE SURFACE. THE CORE SAMPLES SHALL BE PREPARED PER THE METHOD FOR FIELD- MIXED, LABORATORY-COMPACTED SPECIMENS AND TESTED FOR TSR. ASPHALT CONCRETE WITH A TSR LESS THAN 70 SHALL BE REMEDIATED AS REQUIRED BY THE CITY ENGINEER.
- PERMANENT MONUMENTS AS SHOWN ON THE PLANS SHALL BE FURNISHED AND INSTALLED BY THE CONTRACTOR IN ACCORDANCE WITH THE STANDARD PLANS AFTER COMPLETION OF THE STREET IMPROVEMENTS AND STAKED IN THE FIELD BY THE ENGINEER OR SURVEYOR.
- ENGINEER/SURVEYOR SHALL COORDINATE WITH THE CONTRACTOR TO RESET MONUMENTS OR PROVIDE PERMANENT WITNESS MONUMENTS AND FILE THE REQUIRED DOCUMENTATION WITH THE COUNTY SURVEYOR, PURSUANT TO BUSINESS AND PROFESSIONS CODE SECTION 8771.
- THE DEVELOPER ASSUMES ALL RESPONSIBILITY FOR THE APPROVAL OF MAILBOX LOCATIONS BY THE LOCAL BRANCH OF THE UNITED STATES POSTAL SERVICE.
- IN THE EVENT THAT ANY REMAINS OF PREHISTORIC OR HISTORIC HUMAN ACTIVITIES ARE ENCOUNTERED DURING PROJECT-RELATED ACTIVITIES, WORK IN THE IMMEDIATE VICINITY OF THE FINDS SHALL HALT AND THE CONTRACTOR SHALL IMMEDIATELY NOTIFY THE PROJECT SUPERINTENDENT AND THE CITY OF SANTA ROSA INSPECTOR. WORK SHALL NOT RESUME UNTIL A QUALIFIED ARCHAEOLOGIST OR HISTORIC ARCHAEOLOGIST, AS APPROPRIATE, APPROVED BY THE CITY OF SANTA ROSA, HAS EVALUATED THE SITUATION AND MADE RECOMMENDATIONS FOR TREATMENT OF THE RESOURCE, AND WHOSE RECOMMENDATIONS ARE CARRIED OUT. IF HUMAN BURIAL REMAINS ARE ENCOUNTERED, THE CONTRACTOR MUST ALSO CONTACT THE COUNTY CORONER.
- SEWER AND/OR WATER CONNECTIONS TO EXISTING RESIDENCES REQUIRE A PLUMBING PERMIT FROM THE CITY BUILDING DIVISION.
- ANY ONSITE DRAINAGE SYSTEMS PROPOSED FOR CUSTOM LOTS SHALL BE SHOWN ON THE SITE PLAN SUBMITTED FOR REVIEW WITH THE LOTS BUILDING PERMIT APPLICATION.
- ALL TRENCHING IN THE PUBLIC RIGHT OF WAY REQUIRES THE USE OF AC HOT MIX UNDER THE DIRECTION OF THE UTILITIES DEPARTMENT AND STANDARD 215.

DEMOLITION NOTES

- GENERAL:
- CONTRACTOR SHALL COORDINATE LOCATION OF AREAS FOR STAGING AND EQUIPMENT AND MATERIAL STORAGE WITH SCHOOL REPRESENTATIVE.
 - SITE FEATURES NOT SPECIFICALLY DESIGNED FOR REMOVAL SHALL BE PRESERVED AND PROTECTED IN PLACE.
 - EQUIPMENT, UTILITIES, OR OTHER ITEMS NOT IDENTIFIED ON THESE DRAWINGS SHALL REMAIN UNDISTURBED. ANY ADDITIONAL EQUIPMENT OR UTILITIES ENCOUNTERED WITHIN THE LIMITS OF WORK SHALL BE BROUGHT TO THE ATTENTION OF THE SCHOOL'S REPRESENTATIVE PRIOR TO CONTINUING WORK IN THAT AREA.
 - ALL ELECTRICAL LINES AND COMMUNICATION LINES WITHIN PROJECT LIMITS ARE TO REMAIN, EXCEPT AS NOTED.
 - CONTRACTORS SHALL BE RESPONSIBLE FOR KNOWING THE LOCATIONS OF ALL UTILITIES, EQUIPMENT, AND CONDUITS WITHIN THE PROJECT AREA.
 - CONTACT USA AS NEEDED TO MAINTAIN CLEARLY MARKED LOCATIONS OF ALL UTILITIES, EQUIPMENT, AND CONDUITS WITHIN THE PROJECT AREA.
 - DAMAGES TO EXISTING UTILITIES, EQUIPMENT, IRRIGATION EQUIPMENT AND OTHER PROPERTY SHALL BE RECTIFIED TO THE SATISFACTION OF THE DISTRICT'S REPRESENTATIVE AT NO ADDITIONAL COST.
 - COORDINATE DEMOLITION OF EXISTING SITE FEATURES WITH THE VARIOUS TRADES TO AVOID CONFLICTS.
 - IT IS THE CONTRACTOR'S RESPONSIBILITY TO PROPERLY DISPOSE OF ALL ITEMS SHOWN ON THIS PLAN, AND THOSE DAMAGED AS A RESULT OF CONSTRUCTION.
 - THE CONTRACTOR SHALL HIRE AN INDEPENDENT TELEVISION INSPECTION SERVICE TO PERFORM A CLOSED-CIRCUIT TELEVISION INSPECTION OF ALL NEW CONSTRUCTED SEWERS INCLUDING LATERALS FROM THE MAIN TO THE CLEAN-OUT. THE TELEVISION SHALL BE PERFORMED PER SECTION 71-1.08 OF THE CITY OF SANTA ROSA SEWER SYSTEM CONSTRUCTION STANDARD SPECIFICATIONS.
 - CONTRACTOR SHALL INSTALL TREE PROTECTION PRIOR TO SITE DEMOLITION. ANY EXISTING TREE WHICH IS NOT SPECIFICALLY DESIGNATED FOR REMOVAL SHALL BE PRESERVED AND PROTECTED DURING CONSTRUCTION. ACTIVITIES BENEATH THE DRIPLINES OF THESE TREES SHALL BE LIMITED TO IRRIGATION INSTALLATION. ALL EXCAVATIONS OR OTHER CONSTRUCTION OPERATIONS SHALL BE PERFORMED WITH HAND TOOLS. NO MATERIAL STORAGE OR EQUIPMENT OPERATIONS SHALL OCCUR WITHIN THESE AREAS. AVOID CUTTING ROOTS LARGER THAN 1-1/2" IN DIAMETER.

GRADING NOTES

- NO GRADING, CLEARING OR GRUBBING SHALL BE PERFORMED PRIOR TO ISSUANCE OF A GRADING PERMIT BY THE CITY OF SANTA ROSA.
- CONTRACTOR SHALL OBTAIN A DE-WATERING PERMIT FROM THE NORTH COAST REGIONAL WATER QUALITY CONTROL BOARD FOR ANY DE- WATERING OPERATIONS THAT ARE USED TO MANAGE THE REMOVAL OF GROUND WATER FROM EXCAVATIONS WITH THE INTENT OF DOWNSTREAM DISCHARGE TO THE WATERS OF THE STATE OR THE STORM DRAIN SYSTEM. WHEN GROUNDWATER IS TO BE DISCHARGED TO THE SEWER PRIOR APPROVAL MUST BE OBTAINED FROM THE CITY OF SANTA ROSA INDUSTRIAL WASTE DIVISION.
- A NOTICE OF INTENT TO COMPLY WITH THE TERMS OF THE GENERAL PERMIT TO DISCHARGE STORM WATER ASSOCIATED WITH CONSTRUCTION ACTIVITY MUST BE FILED WITH THE NORTH COAST REGIONAL WATER QUALITY CONTROL BOARD PRIOR TO THE ISSUANCE OF ANY GRADING PERMIT (CALL 707-576-2220 FOR INFORMATION).
- TEMPORARY STOCKPILES SHALL NOT BE LOCATED WITHIN CREEK SETBACK AREAS, PROTECTED VEGETATION/TREE AREAS OR WITHIN 10 FEET OF AN ADJACENT RESIDENTIAL PROPERTY LINE. STOCKPILES HIGHER THAN 2.5 FEET SHALL NOT BE WITHIN 50 FEET OF AN ADJACENT RESIDENTIAL PROPERTY LINE.
- TEMPORARY STOCKPILES MUST BE REMOVED BY COMPLETION OF GRADING ACTIVITIES. OTHERWISE A SEPARATE TEMPORARY USE PERMIT AND GRADING PERMIT ARE REQUIRED FOR THE STOCKPILE.
- DUST CONTROL SHALL BE PROVIDED BY CONTRACTOR DURING ALL PHASES OF CONSTRUCTION PER BAY AREA AIR QUALITY MANAGEMENT DISTRICT BEST MANAGEMENT PRACTICES.
- SUBDIVISION GRADING SHALL OCCUR ONLY BETWEEN APRIL 15 AND OCTOBER 15 UNLESS OTHERWISE APPROVED BY THE CITY ENGINEER OR CHIEF BUILDING OFFICIAL IN CONJUNCTION WITH AN APPROVED EROSION AND SEDIMENT CONTROL PLAN AND A GRADING SCHEDULE TO BE SUBMITTED TO COMMUNITY DEVELOPMENT ENGINEERING WITH THE GRADING PERMIT APPLICATION. WINTERIZATION OF THE PROJECT SHALL BE THE FIRST ORDER OF WORK.
- SITE GRADING SHALL BE DONE UNDER OBSERVATION OF THE PROJECT GEOTECHNICAL ENGINEER AND SHALL BE IN COMPLIANCE WITH CHAPTER 18 APPENDIX J, MOST RECENT EDITION OF THE CALIFORNIA BUILDING CODE AND THE RECOMMENDATIONS CONTAINED IN THE SOILS REPORTS, PREPARED BY MILLER PACIFIC ENGINEERING GROUP, PROJECT NO. 2647.001, AND DATED JUNE 19, 2016 AND SEPTEMBER 28, 2016. ANY EXISTING NON-COMPLYING FILLS AS IDENTIFIED IN THE PROJECT GEOTECHNICAL INVESTIGATION SHALL BE REMOVED OR BROUGHT INTO COMPLIANCE WITH CHAPTER 18, AND APPENDIX J, MOST RECENT EDITION OF THE CALIFORNIA BUILDING CODE, AND THE SATISFACTION OF THE GEOTECHNICAL ENGINEER.
- EXCESS AND UNSUITABLE MATERIAL SHALL BE REMOVED FROM THE SITE TO AN AREA APPROVED BY THE CITY BUILDING DIVISION AND CITY FIRE DEPARTMENT. APPROVALS MUST BE IN WRITING PRIOR TO REMOVAL OF MATERIAL.
- DRAINAGE FROM UPSTREAM PROPERTIES SHALL NOT BE BLOCKED BY GRADING OR CONSTRUCTION OF IMPROVEMENTS.
- THE CONTRACTOR SHALL PROTECT EXISTING DRAINAGE FACILITIES FROM SEDIMENTATION DURING ALL PHASES OF CONSTRUCTION.
- HAZARDOUS MATERIAL SHALL BE REMOVED AND DISPOSED OF ACCORDING TO THE REQUIREMENTS OF THE CITY'S FIRE DEPARTMENT. THE APPLICANT IS REQUIRED TO DEMONSTRATE COMPLIANCE WITH STATE AND LOCAL CODES FOR REMOVAL OF ASBESTOS CONTAINING MATERIALS DURING DEMOLITION OF ANY STRUCTURES ON THE PROJECT SITE.
- PRIOR TO ANY GRADING OPERATION, THE CONTRACTOR SHALL INSTALL PROTECTIVE FENCING AROUND THE DRIP LINE OF TREES TO BE SAVED IN COMPLIANCE WITH THE CITY TREE ORDINANCE. THE CUTTING, FILLING, PAVING OR TRENCHING WITHIN ROOT ZONES OF TREES TO BE SAVED MUST BE REVIEWED AND APPROVED BY A CITY APPROVED ARBORIST AND PERFORMED UNDER THEIR ON SITE SUPERVISION.
- DRIP-LINES OF TREES OVERHANGING THE PROPERTY LINE SHALL BE AFFORDED THE SAME LEVEL OF PROTECTION AS TREES ON SITE THAT ARE TO REMAIN.
- ALL PADS SHALL BE CONSTRUCTED TO A TOLERANCE OF 0.1 FEET +/- FROM SHOWN PAD ELEVATION.
- RECORD DRAWINGS SHALL INCLUDE SUB-DRAINS AND CLEAN-OUTS REQUIRED BY THE PROJECT GEOTECHNICAL ENGINEER DURING CONSTRUCTION.
- DEVELOPMENT MUST CONFORM TO 40 CFR (CODE OF FEDERAL REGULATIONS) PARTS 122, 123 AND 124 NATIONAL POLLUTANT DISCHARGE ELIMINATION SYSTEM (NPDES) PERMIT APPLICATIONS FOR STORM WATER DISCHARGE. PROJECT MUST ALSO CONFORM WITH ANY DESIGN AND CONSTRUCTION POLICIES ADOPTED BY THE CITY TO CONFORM WITH THESE REGULATIONS.
- UNDER 40 CFR, CONSTRUCTION ACTIVITY INCLUDES CLEARING, GRADING AND EXCAVATION ACTIVITIES. THESE ACTIVITIES REQUIRE OBTAINING A CSP PERMIT FROM THE STATE WATER RESOURCES CONTROL BOARD PRIOR TO THE COMMENCEMENT OF CONSTRUCTION ACTIVITY.
- FILLING IS RESTRICTED TO 1 FOOT MAXIMUM ABOVE EXISTING GROUND AND 2 FOOT MINIMUM ADJACENT TO EXISTING RESIDENTIAL LOTS, UNLESS OTHERWISE APPROVED BY THE CITY ENGINEER.
- BLASTING (IF REQUIRED) REQUIRES A PERMIT FROM THE CITY FIRE DEPARTMENT.
- PRIOR TO ANY GRADING OPERATION THE GRADING CONTRACTOR AND THE PROJECT GEOTECHNICAL ENGINEER SHALL JOINTLY SEARCH THE SITE FOR EXISTING WELLS AND SEPTIC SYSTEMS. PROJECT SHALL NOTIFY THE CITY OF FINDINGS.
- ALL SEPTIC SYSTEMS SHALL BE ABANDONED PER CITY OF SANTA ROSA AND SONOMA COUNTY PERMIT AND RESOURCE MANAGEMENT DEPARTMENT REQUIREMENTS. PERMIT SHALL BE OBTAINED FROM SONOMA COUNTY PERMIT AND RESOURCE MANAGEMENT DEPARTMENT. SEPTIC SYSTEMS SHALL BE REMOVED AND BACKFILLED UNDER THE OBSERVATION OF THE PROJECT GEOTECHNICAL ENGINEER AND INSPECTION BY THE SONOMA COUNTY PERMIT AND RESOURCE MANAGEMENT DEPARTMENT.
- ANY EXISTING WELLS TO BE ABANDONED SHALL BE DONE IN ACCORDANCE WITH THE CITY WELL ORDINANCE AS ADMINISTERED BY THE CITY BUILDING OFFICIAL. PERMITS ARE REQUIRED FROM THE SONOMA COUNTY PERMIT & RESOURCE MANAGEMENT DEPARTMENT.
- REMOVAL OF ANY PERMANENT STRUCTURE 10 X 12' OR LARGER REQUIRES A DEMOLITION PERMIT FROM THE CITY BUILDING DIVISION.
- PRIVATE DRIVEWAYS SHALL BE CONSTRUCTED UNDER THE OBSERVATION OF THE SOILS ENGINEER IN COMPLIANCE WITH THE CITY DESIGN AND CONSTRUCTION STANDARDS. PROGRESS AND FINAL REPORTS SHALL BE FURNISHED TO THE CITY IN COMPLIANCE WITH C.B.C. SPECIAL INSPECTION REQUIREMENTS. ALL COSTS RELATED TO SUCH SPECIAL INSPECTIONS SHALL BE BORNE BY THE OWNER/DEVELOPER.
- STRUCTURAL SOIL SHALL BE CUSTOM DESIGNED BY WALLACE LABORATORIES, SPECIFICALLY FOR USE ON THIS SITE. THE FINAL MIX DESIGN INCLUDING LAB ANALYSIS OF MATERIAL SOURCED ON SITE, DURING GRADING OPERATIONS. CONTACT RON MATTERI, WHEELER ZAMARONI MATERIALS 707-974-3773 TO COORDINATE FINAL MIX DESIGN AND PREPARATION OF MATERIAL. STRUCTURAL SOIL SHALL MEET STANDARDS SET FORTH IN CITY OF SANTA ROSA LOW IMPACT DEVELOPMENT TECHNICAL DESIGN MANUAL, REFERENCE DOCUMENT "E"
- THE PERMITTEE AND THE PROPERTY OWNER SHALL BE RESPONSIBLE FOR THE WORK TO BE PERFORMED IN COMPLIANCE WITH THE APPROVED PLANS AND SPECIFICATIONS AND ANY PERMIT CONDITIONS. WORK SHALL BE SUBJECT TO INSPECTION AS REQUIRED BY THE PERMIT AUTHORITY. PRMD, TO VERIFY COMPLIANCE. THE CONTRACTOR SHALL CONSULT THE PROJECT JOB CARD FOR COORDINATION OF INSPECTION REQUESTS.
- PRIOR TO THE START OF ANY GRADING WORK, THE PERMITTEE SHALL HAVE A PRE-CONSTRUCTION CONSULTATION WITH PRMD STAFF TO DISCUSS THE SCOPE OF THE PROJECT, PERMIT CONDITIONS, REQUIRED INSPECTIONS, APPROPRIATE APPLICATION OF BEST MANAGEMENT PRACTICES (BMPs) AND ANY OTHER CONSTRUCTION ISSUES.
- INSPECTION REQUESTS SHALL BE MADE THROUGH THE CITY OF SANTA ROSA AUTOMATED INSPECTION REQUEST SYSTEM (SELECTION) 707-565-3551. ELECTION REQUESTS ALLOW SCHEDULING AND CANCELING OF INSPECTIONS FROM 8:00AM TO 12:00AM, 7 DAYS A WEEK.
- PRMD MAY REQUIRE PROFESSIONAL INSPECTIONS AND CERTIFICATIONS TO VERIFY PROPER COMPLETION OF THE WORK. WHERE THE USE OF PROFESSIONAL PERSONNEL IS REQUIRED, THESE PERSONNEL SHALL IMMEDIATELY REPORT IN WRITING TO PRMD AND THE PERMITTEE ANY INSTANCE OF WORK NOT IN COMPLIANCE WITH THE APPROVED PLANS, SPECIFICATIONS, OR ANY PERMIT CONDITIONS. IF PROFESSIONAL PERSONNEL IS CHANGED DURING THE COURSE OF THE WORK, THE WORK SHALL BE STOPPED UNTIL THE REPLACEMENT INDIVIDUAL HAS NOTIFIED PRMD IN WRITING OF THEIR AGREEMENT TO ACCEPT RESPONSIBILITY FOR APPROVAL OF THE COMPLETED WORK WITHIN THE AREA OF THEIR TECHNICAL COMPETENCE.
- PRMD SHALL FINAL A PERMIT WHEN ALL WORK, INCLUDING THE INSTALLATION OF ALL DRAINAGE IMPROVEMENTS AND THEIR PROTECTIVE DEVICES, AND ALL STORM WATER BEST MANAGEMENT PRACTICES, HAVE BEEN COMPLETED IN COMPLIANCE WITH THE APPROVED PLANS AND SPECIFICATIONS, AND ALL FINAL REPORTS REQUIRED BY SCC 11.14.040A HAVE BEEN SUBMITTED AND ACCEPTED. FINAL REPORTS MAY INCLUDE: AS-BUILT PLANS, TESTING RECORDS, PROFESSIONAL OPINIONS, AND DECLARATIONS ABOUT COMPLETED WORK FROM PROFESSIONAL PERSONNEL. SIMILAR REPORTS MAY BE REQUIRED AT OTHER STAGES OF THE WORK.
- THE PERMITTEE SHALL PROVIDE ADEQUATE AND SAFE ACCESS TO THE SITE FOR INSPECTION DURING THE PERFORMANCE OF ALL ADO.
- DURING CONSTRUCTION ACTIVITIES, THE PROJECT SITE ADDRESS SHALL BE POSTED AS FOLLOWS: (1) THE STREET NUMBERS MUST BE AT LEAST FOUR INCHES TALL, WITH A REFLECTIVE SURFACE. (2) THE ADDRESS MUST BE VISIBLE FROM BOTH DIRECTIONS ALONG THE ROAD. (3) THE ADDRESS MUST BE POSTED AT ALL FORKS IN ANY ACCESS ROAD AND AT THE SITE.

INSPECTIONS

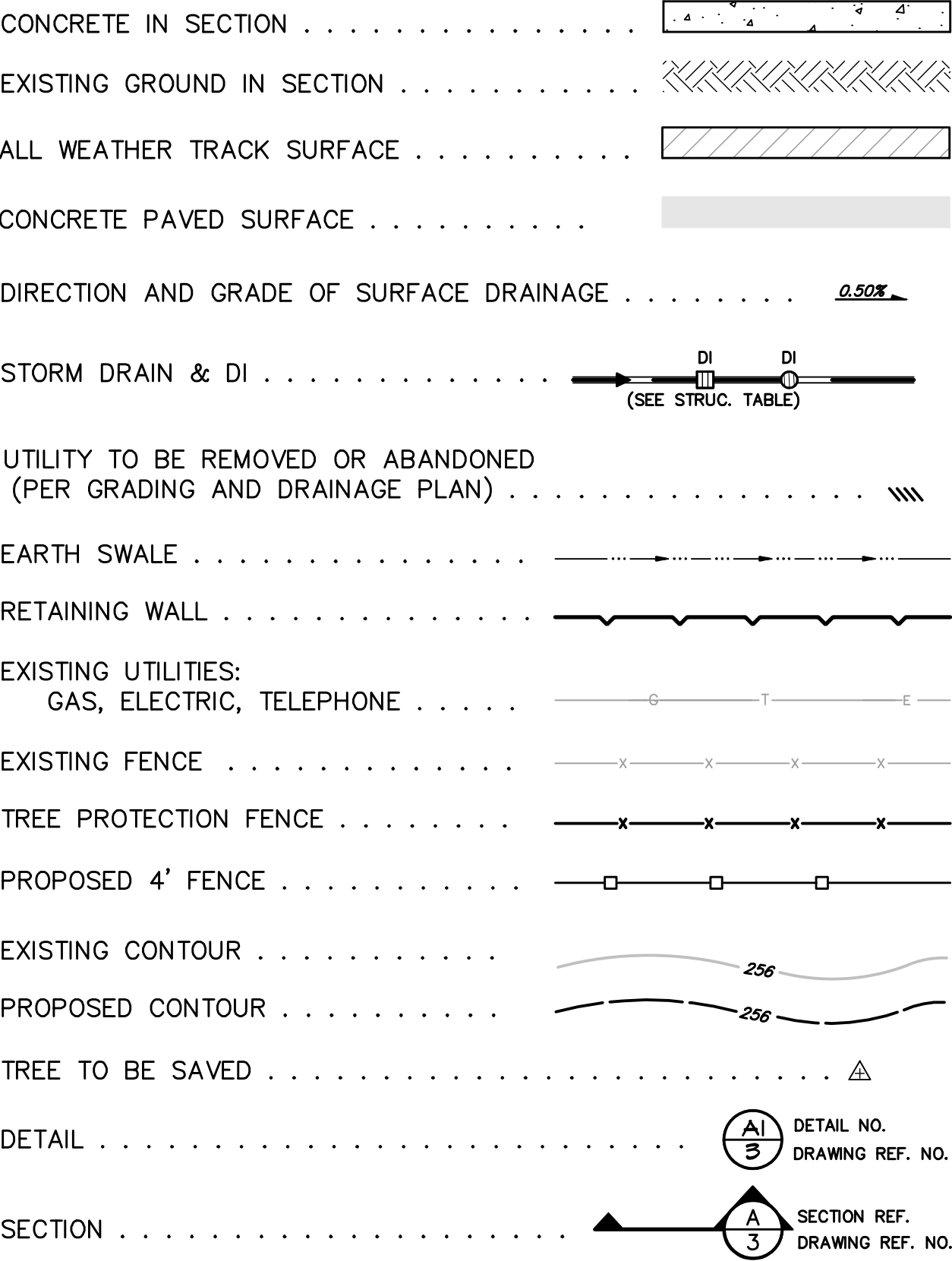
BENCHMARK

1/2" IRON PIPE TAGGED PLS 3890 (PT. #10002), LYING 15 FEET SOUTHEASTERLY OF THE EASTERLY OF 2 FENCE ANGLE POINTS AT THE SOUTHEASTERLY CORNER OF TENNIS COURTS.

ELEVATION = 119.44 FEET ASSUMED

CONTOUR INTERVAL = 1.0 FOOT

LEGEND



STORM DRAIN NOTES

- ALL STORM DRAIN MANHOLES SHALL BE A MINIMUM OF 48" IN DIAMETER. UNLESS OTHERWISE NOTED, MANHOLE FRAME AND COVER SHALL BE D&L NO. A1466 OR SBF NO. 1906 (36" CLEAR OPENING, HEAVY DUTY, NON-ROCKING) AS MANUFACTURED BY D&L FOUNDRY, SOUTH BAY FOUNDRY OR APPROVED EQUAL. RAISED LETTER ON TOP OF THE COVER SHALL READ "STORM DRAIN." PIPES SHALL BE FLUSH WITH INSIDE OF MANHOLE.
- TRENCH AND BACKFILL CONSTRUCTION FOR STORM DRAIN PIPE SHALL BE IN ACCORDANCE WITH CALTRANS' STANDARD PLANS DRAWING A62-D FOR CONCRETE CULVERTS AND A62-F FOR METAL AND PLASTIC CULVERTS.
- VERTICAL CONTROL OF PIPE LAYING MAY BE BY EITHER (A) "BATTER BOARDS", STRING LINE AND GRADE ROD, OR (B) BY LASER BEAM. FOR STORM DRAIN PIPES (OTHER THAN CIPP) WHICH HAVE SLOPES FLATTER THAN 0.0030 FT./FT., THE SOIL CEMENT BEDDING DESCRIBED IN SECTION 19-3.0250 CALTRANS STANDARD SPECIFICATIONS SHALL BE USED.
- OFF-SITE DRAINAGE IMPROVEMENTS SHALL BE COMPLETED PRIOR TO NOVEMBER 1.
- THE CONTRACTOR SHALL PLACE AN APPROVED STORM DRAIN LABEL ON ALL SURFACE STORM DRAIN STRUCTURES PLACED OR MODIFIED WITHIN THE PUBLIC RIGHT-OF-WAY. THE PRMD CONSTRUCTION INSPECTOR WILL PROVIDE APPROVED LABELS. IF THE STRUCTURE IS ALREADY LABELED, IT WILL BE UP TO THE PRMD CONSTRUCTION INSPECTOR'S DISCRETION WHETHER OR NOT THE LABEL SHOULD BE REPLACED.
- ALL SEWER PIPE AND STORM DRAIN PIPE LENGTHS ARE MEASURED HORIZONTALLY FROM CENTER OF STRUCTURES.
- ALL STORM DRAIN SHOWN "SD" SHALL BE RCP CL III UNLESS OTHERWISE NOTED, CONFORMING TO ASTM C-76.
- ALL PRIVATE SD 18" OR SMALLER SHALL BE HDPE (ADS N-12 OAE) OR PVC (SDR-35) UNLESS OTHERWISE NOTED, CONFORMING TO AASHTO M252, M292, OR ASTM D3034 AS APPLICABLE.

SHEET INDEX

DWG NO.	TITLE
1	GENERAL NOTES
2	MISCELLANEOUS DETAILS
3	HORIZONTAL CONTROL PLAN
4	GRADING AND DRAINAGE PLAN
5	UTILITY PLAN

PRELIMINARY
FOR STUDY PURPOSES ONLY
DATE: 9/21/2020

CARLILE • MACY
CIVIL ENGINEERS • URBAN PLANNERS
LAND SURVEYORS • LANDSCAPE ARCHITECTS
15 THIRD STREET, SANTA ROSA, CA 95401
Tel (707) 542-6451 Fax (707) 542-5212

5 SNOOPY PLACE
LOCATED IN
SANTA ROSA, CALIFORNIA

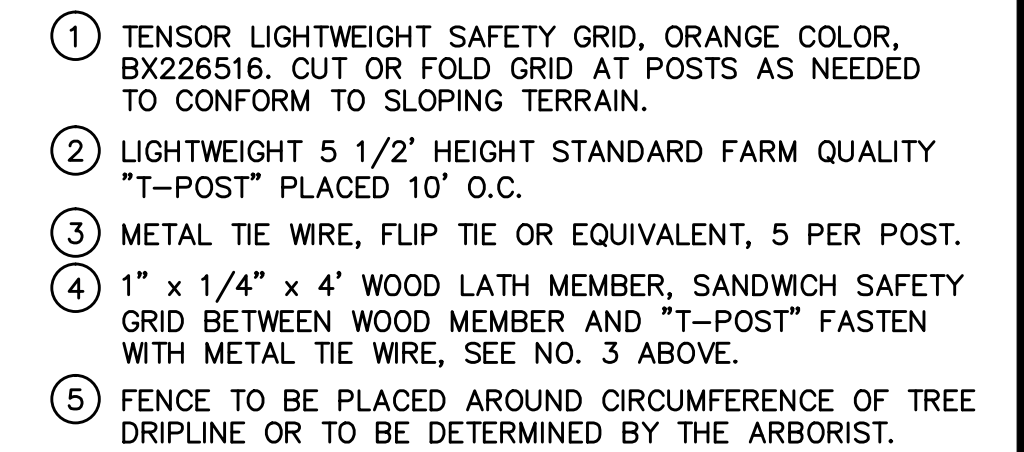
GENERAL NOTES

DESIGNED BY: PMC
DRAWN BY: NLC
CHECKED BY: PMC
DATE: AUGUST 2019
JOB NO. 2019020
SHEET No. C0.1
1 OF 5
Copyright © Carlile • Macy

REVISIONS
No. DATE DESCRIPTION APPR.



- ① OVERFLOW BYPASS, 8" DOMED GRATE, INLET ELEVATION PER PLAN IS LOWEST OPENING OF GRATE
- ② NYLOPLAST DRAIN BASIN.
- ③ EXFILTRATION TRENCH: 4" PERFORATED FLEX DRAIN, WRAPPED IN FILTER FABRIC, PLACED IN A 12" WIDE TRENCH FULL OF ¾" CLEAN DRAIN ROCK. TRENCH TO BE LINED WITH DRAIN ROCK.
- ④ EXFILTRATION PIPE TO BE LEVEL, TOP OF PIPE TO BE AT ELEVATION OF OVERFLOW BYPASS INLET.
- ⑤ EDGE OF TRENCH TO FOLLOW EDGE OF BIOSWALE PLANTING, SEE LANDSCAPE PLANTING PLAN.
- ⑥ SOIL SURFACE.
- ⑦ MULCH, SEE LANDSCAPE PLANTING PLANS.
- ⑧ BIOSWALE PLANTING, SEE LANDSCAPE PLANTING PLANS.
- ⑨ BIOFILTRATION SOIL MIX, SEE NOTES.
- ⑩ SUBGRADE

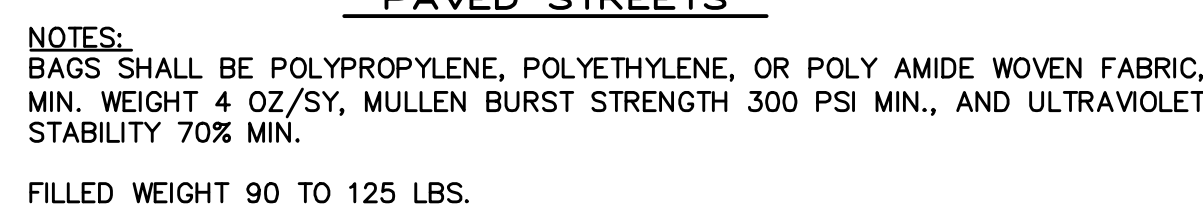


CE TEMPORARY STABILIZED CONSTRUCTION ENTRANCE NO SCAL



NOTE:
ALL CONCRETE SHALL BE CLASS "A" PCC
SEE CITY OF SR STD. 235 FOR LOCATIONS
OF WEAKENED PLANE & EXPANSION JOINTS

CG PRIVATE CURB AND GUTTER NO SCALE



D1 ROADWAY CHECK DAM NO SCALE



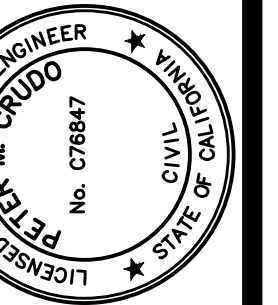
PRELIMINARY
FOR STUDY PURPOSES ONLY
DATE: 9/21/2020

[illegible]

CARLILE • MACY

CIVIL ENGINEERS • URBAN PLANNERS
LAND SURVEYORS • LANDSCAPE ARCHITECTS

15 THIRD STREET, SANTA ROSA, CA 95401
TEL (707) 542-6451 FAX (707) 542-5212



LOCATED IN
SANTA ROSA, CALIFORNIA
MISCELLANEOUS DETAILS

igned by: PMC
n by: NLC
ked by: PMC

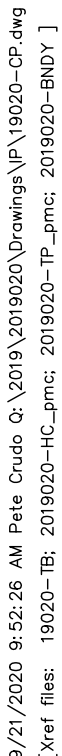
AUGUST 2019

No.
2019020

ET No. C0.2

2 OF 5

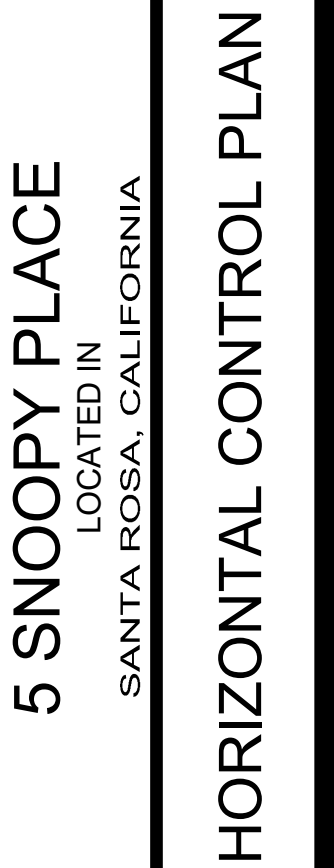
right © Corille • Macy



CARLILE • MACY

CIVIL ENGINEERS • URBAN PLANNERS
LAND SURVEYORS • LANDSCAPE ARCHITECTS

15 THIRD STREET, SANTA ROSA, CA 95401
TEL (707) 542-6451 FAX (707) 542-5212



Designed by: PMC
 Drawn by: NLC
 Checked by: PMC

Date:
AUGUST 2019

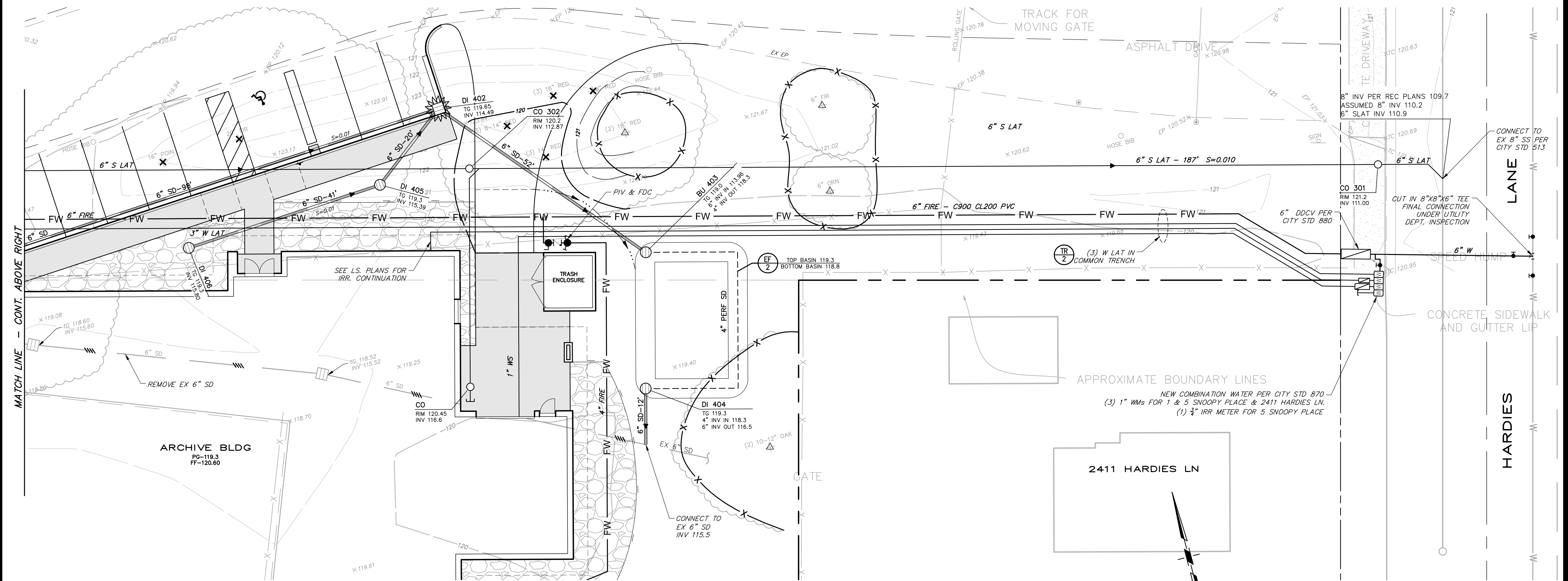
Job No.
 2019020

SHEET No. **C1.0**

3 OF **5**

Copyright © Corlie • Macy

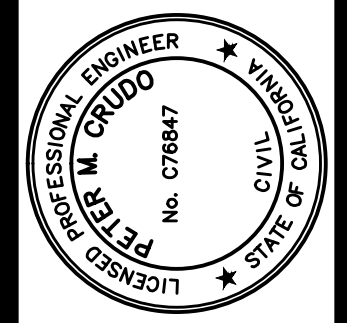
Designed by:	PMC
Drawn by:	NLC
Checked by:	PMC
Date: AUGUST 2019	
Job No. 2019020	
SHEET No. C2.0	
4 OF 5	
Copyright © Corliss • Macy	

[illegible]

CARLILE • MACY

CIVIL ENGINEERS • URBAN PLANNERS
LAND SURVEYORS • LANDSCAPE ARCHITECTS

15 THIRD STREET, SANTA ROSA, CA 95401
TEL (707) 542-6451 FAX (707) 542-5212



5 SNOOPY PLACE
LOCATED IN
SANTA ROSA, CALIFORNIA

UTILITY PLAN

Designed by:	PMC
Drawn by:	NLC
Checked by:	PMC
Date: AUGUST 2019	
Job No. 2019020	
SHEET No. C3.0	
5 OF 5	
Copyright © Corliffe • Macy	