

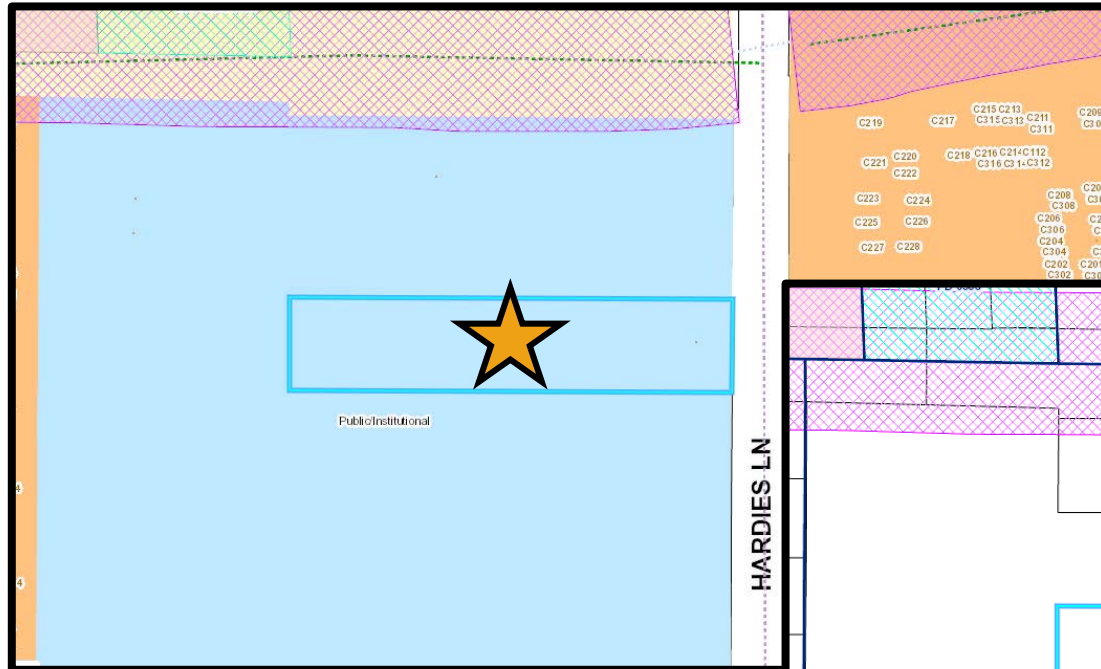
Schultz Museum Archive Building

5 Snoopy Place

October 15, 2020

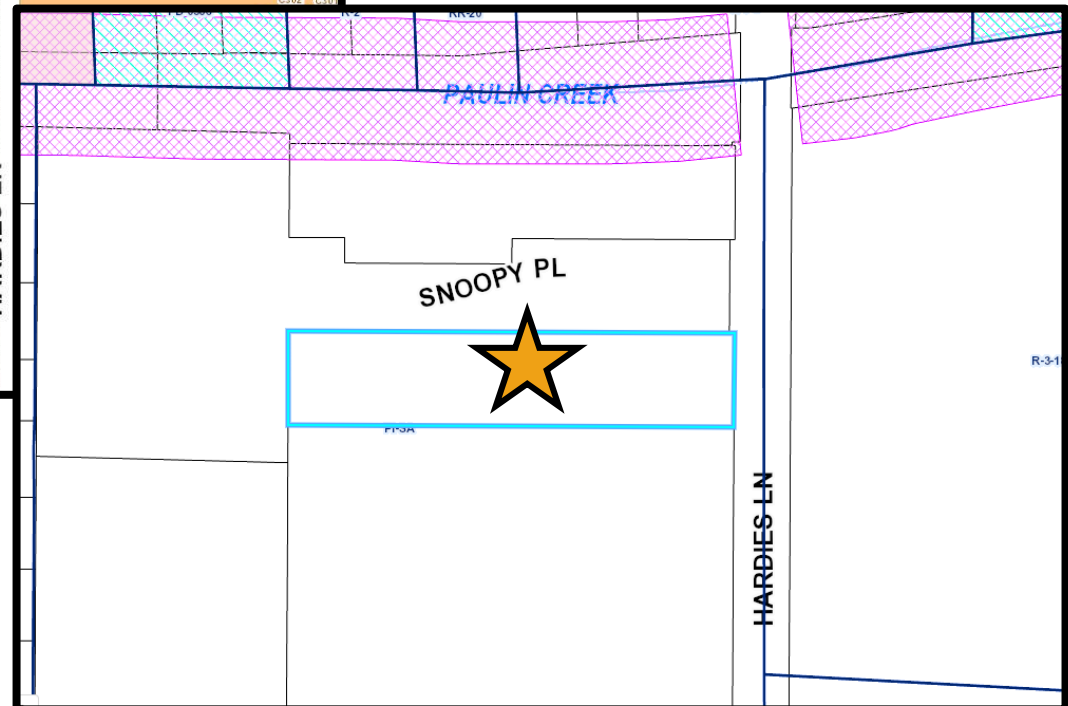
Susie Murray, Senior Planner
Planning and Economic Development

General Plan & Zoning

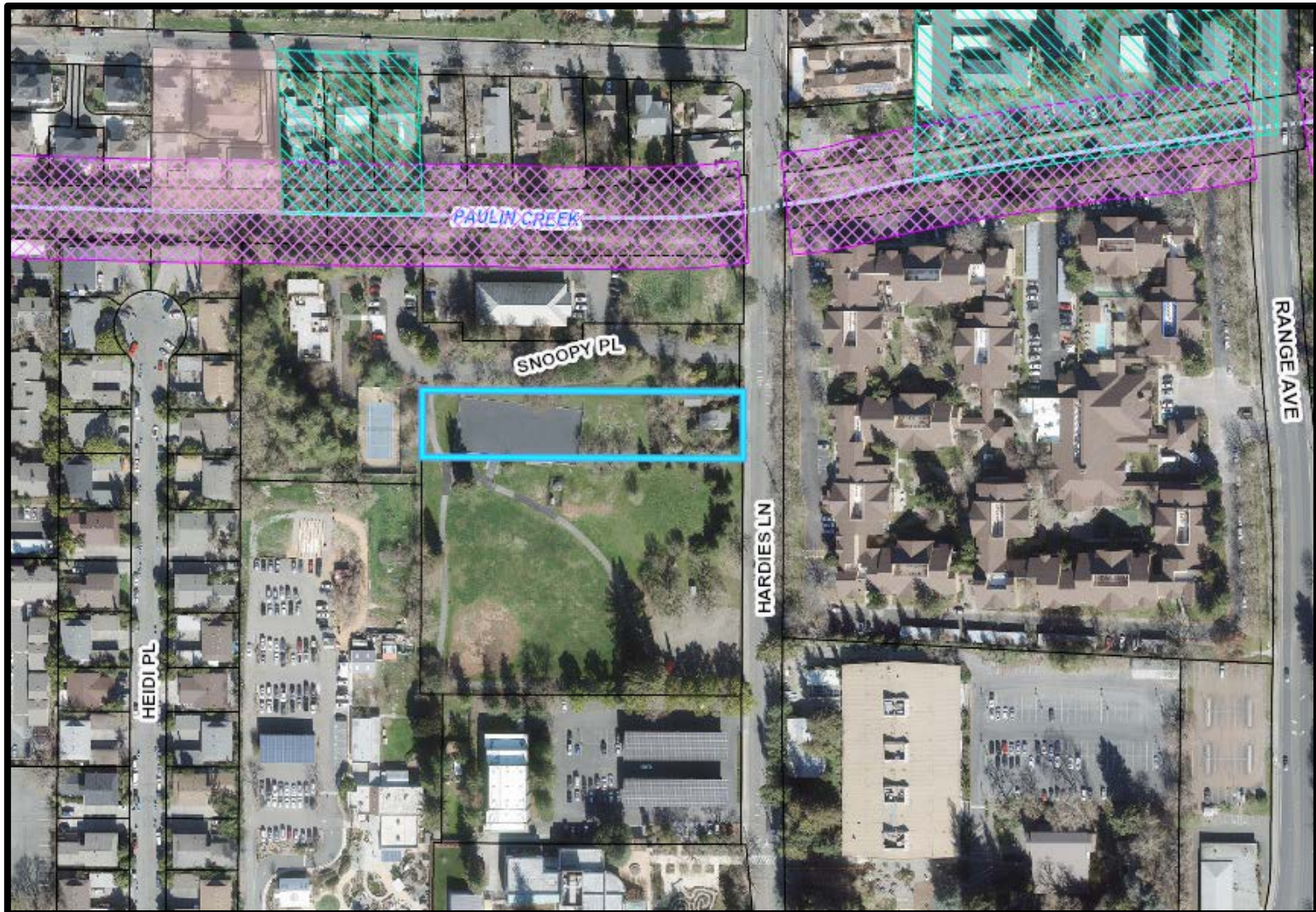


General Plan: Public Institutional

Zoning: Public Institutional,
Within North Station PDA



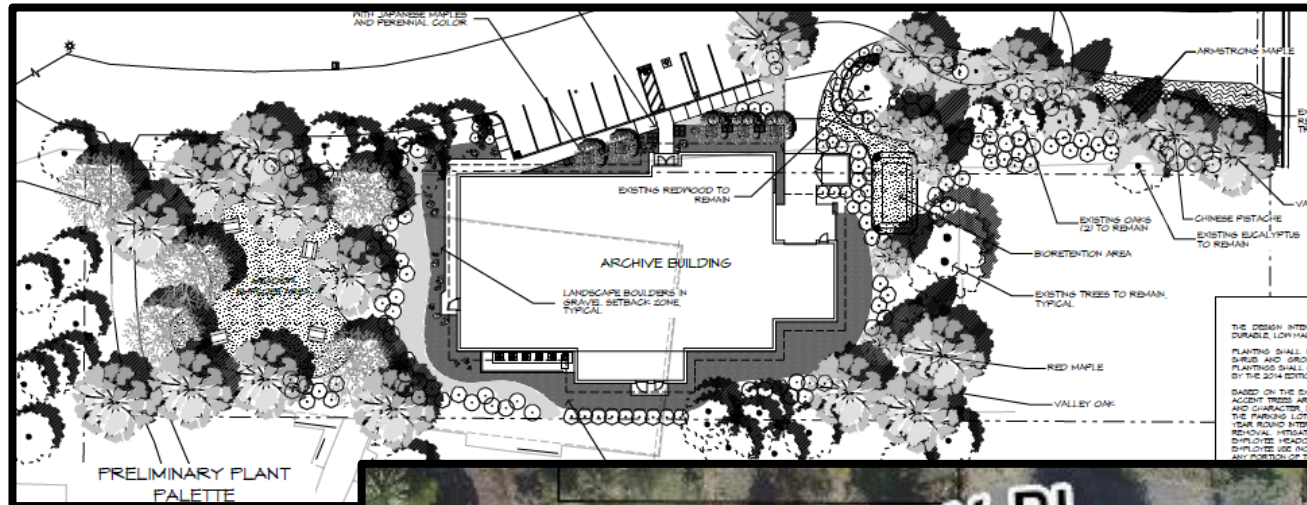
5 Snoopy Place Neighborhood Context



Construct an approximately 9,500 square foot storage building



Supporting Plans (example below)



Required Findings

- Design and layout is of superior quality; consistent with General Plan and applicable Zoning Code requirements, the City's Design Guidelines
- Design is appropriate for the use and achieves the goals set forth in the framework of Design Review;
- Will not interfere with the use and enjoyment of neighboring existing or future developments;
- Compatible with the character of the surrounding neighborhood;
- The design of the proposed development will provide a desirable environment;
- Will not be detrimental to the public health, safety, or welfare or materially; and
- Compliant with California Environmental Quality Act (CEQA) (previously approve MND).

- There are no unresolved issues as a result of staff review.
- All noticing was done in compliance with Zoning Code.
- No comments have been received.

Recommendation

It is recommended by the Planning and Economic Development Department that the Zoning Administrator grant Design Review to allow the construction of the Schultz Museum Archive Building at 5 Snoopy Place.

Susie Murray, Senior Planner
Planning and Economic Development
smurray@srcity.org
(707) 543-4348

